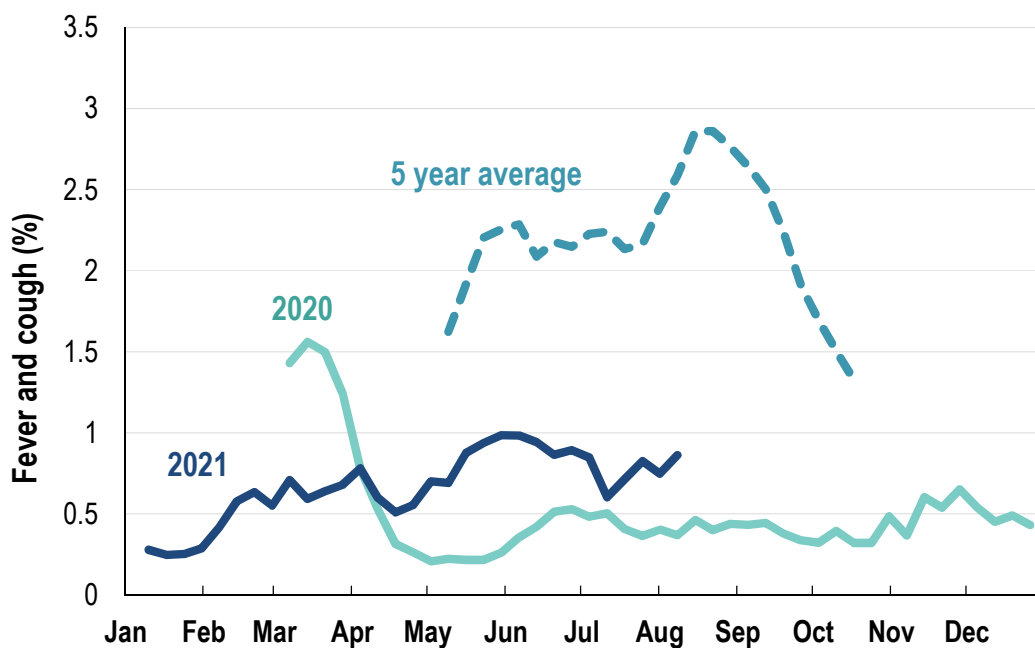


This week influenza-like illness activity is low 67,180 participants this week

Influenza-like illness activity*:

*Influenza-like illness activity is defined as fever & cough for this report

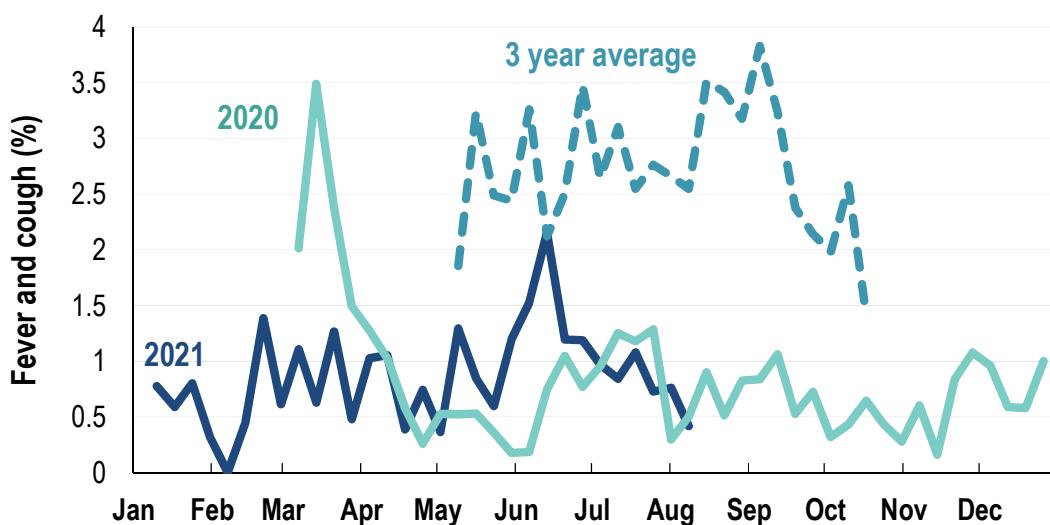
0.9% this week: flu-like illness activity is low



*5 year average is calculated using 2015, 2016, 2017, 2018 and 2019 data
^ Data are age standardised in this chart

Influenza-like illness activity among Aboriginal and Torres Strait Islander participants

0.4% this week: flu-like illness activity is low



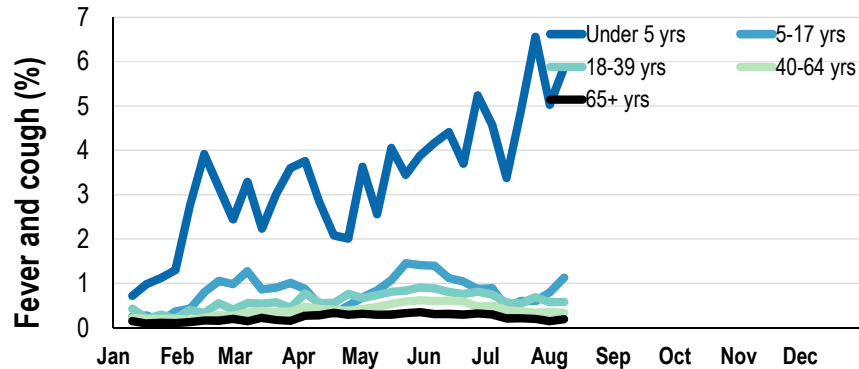
*Average Number of Aboriginal and Torres Strait Islander Participants = 735
^3 year average is calculated using 2017, 2018 and 2019 data

Influenza-like illness severity: <i>55.1% of participants with fever and cough sought medical advice this week</i>		
Influenza-like illness Severity	Week ending 08 August 2021	Week ending 01 August 2021
	number (%)	number (%)
Number of participants	67180 (100%)	66404 (100%)
Fever & cough	323 (0.5%)	279 (0.4%)
Fever, cough & time-off normal duties	219 (0.3%)	200 (0.3%)
Fever, cough & 3 or more days off work/normal duties	219 (0.3%)	200 (0.3%)
Number of participants with fever and cough	323 (100%)	279 (100%)
*Sought medical advice for fever and cough	178 (55.1%)	170 (60.9%)
Admitted to hospital	3 (0.9%)	4 (1.4%)
Tested for influenza	26 (8%)	40 (14.3%)
Tested, result positive for influenza	3 (0.9%)	2 (0.7%)
Tested for coronavirus (COVID-19)	150 (46.4%)	144 (51.6%)
Tested, result positive for coronavirus (COVID-19)	1 (0.3%)	0 (0%)

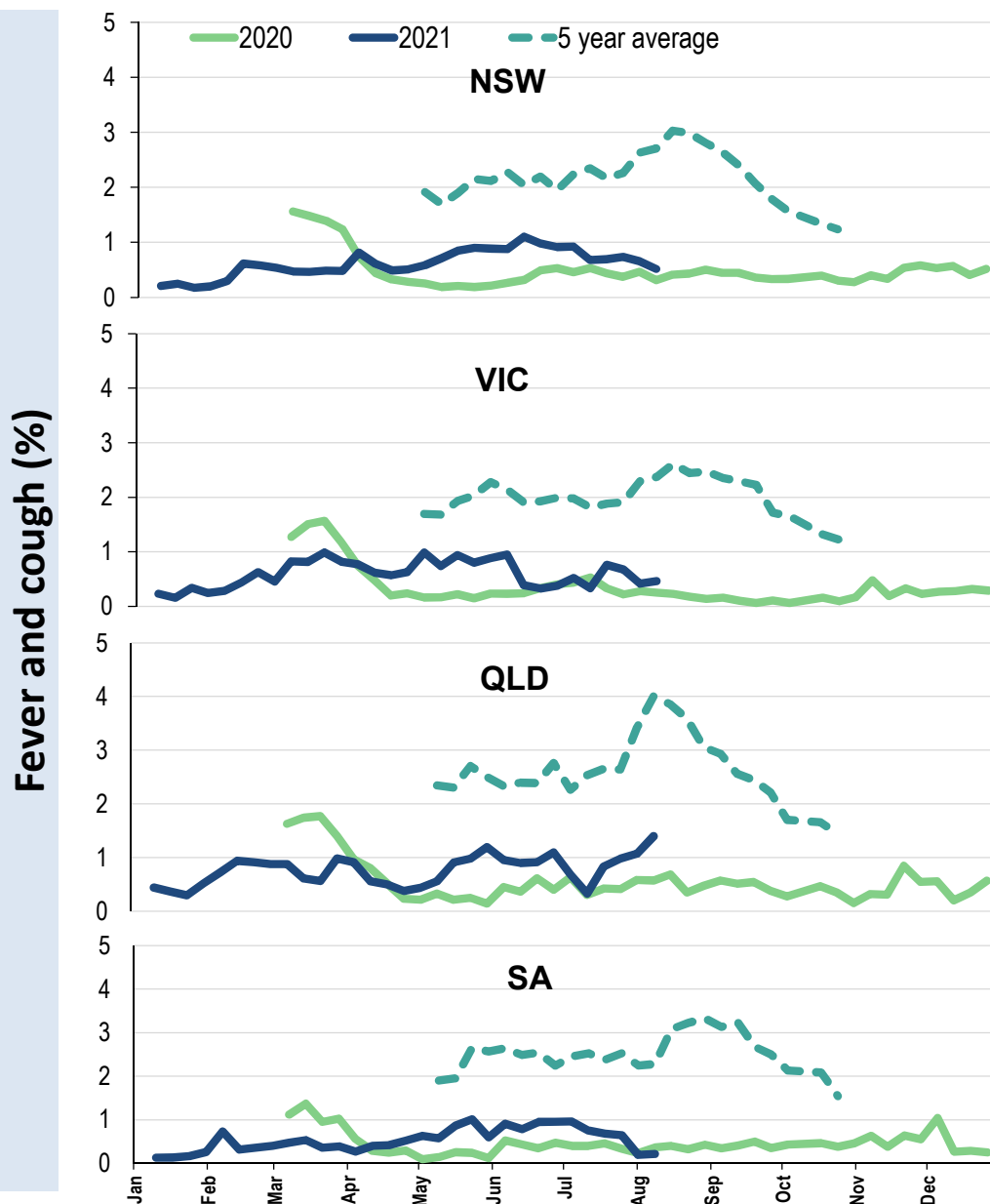
*Includes those who sought medical advice from a general practitioner, COVID-19 clinic, emergency department, or were admitted to hospital for fever & cough



Influenza-like illness activity by age group (Australia):



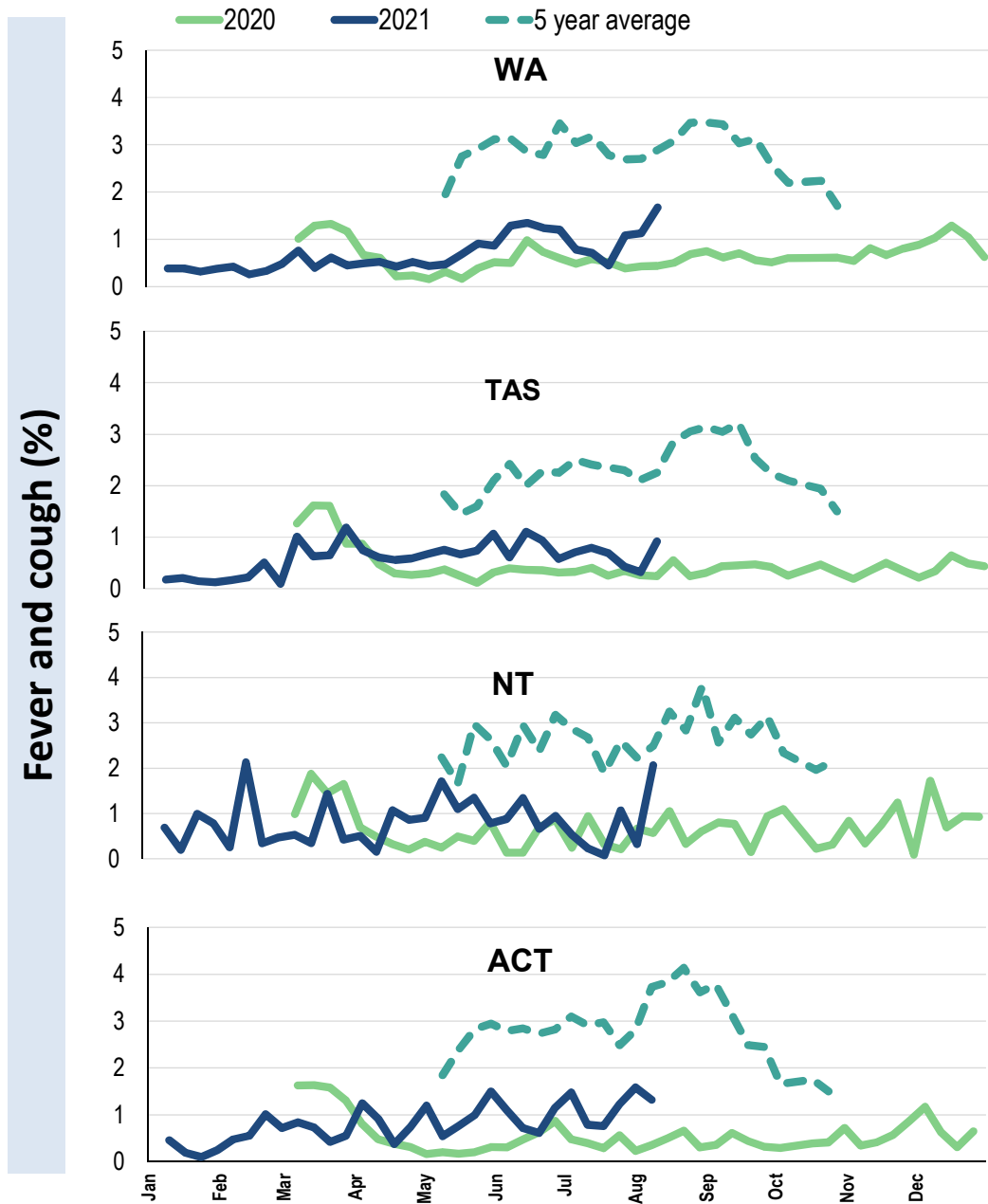
Influenza-like illness activity by state/territory (age standardised):





Week ending 08 August 2021

Influenza-like illness activity by state/territory (age standardised):

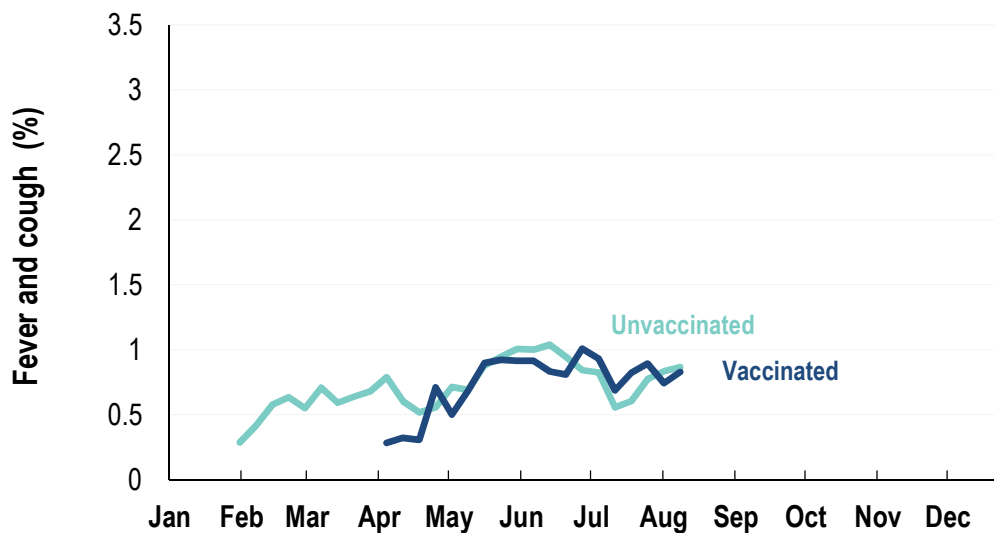


Participation:
67,180 participants (66,404 last week)

State	Participants	% Rate/100,000 population
NSW	23649	35.2% 299.5
VIC	13491	20.1% 212.2
QLD	8346	12.4% 168.7
SA	5803	8.6% 336.0
WA	6734	10.0% 260.3
TAS	4282	6.4% 820.3
NT	1083	1.6% 440.1
ACT	3792	5.6% 919.0
AUS	67180	100.0% 272.0

Vaccination rates:

Vaccinated participants:	COVID-19 vaccine		Influenza (%)
	At least 1 dose (%)	2 doses (%)	
<5 years			54.2
5-17 years	1.7	0.9	36.7
18-64 years	78.3	51.0	71.1
65+ years	94.7	61.5	90.1
Working with patients	92.5	79.6	83.9
Aboriginal and/or Torres Strait Islander	57.1	39.6	65.2
Vaccinated overall (%)	75.5	49.2	73.8



* Data are age standardised in this chart

^2021 Influenza vaccination data not available until 04/04/21 due to low counts

