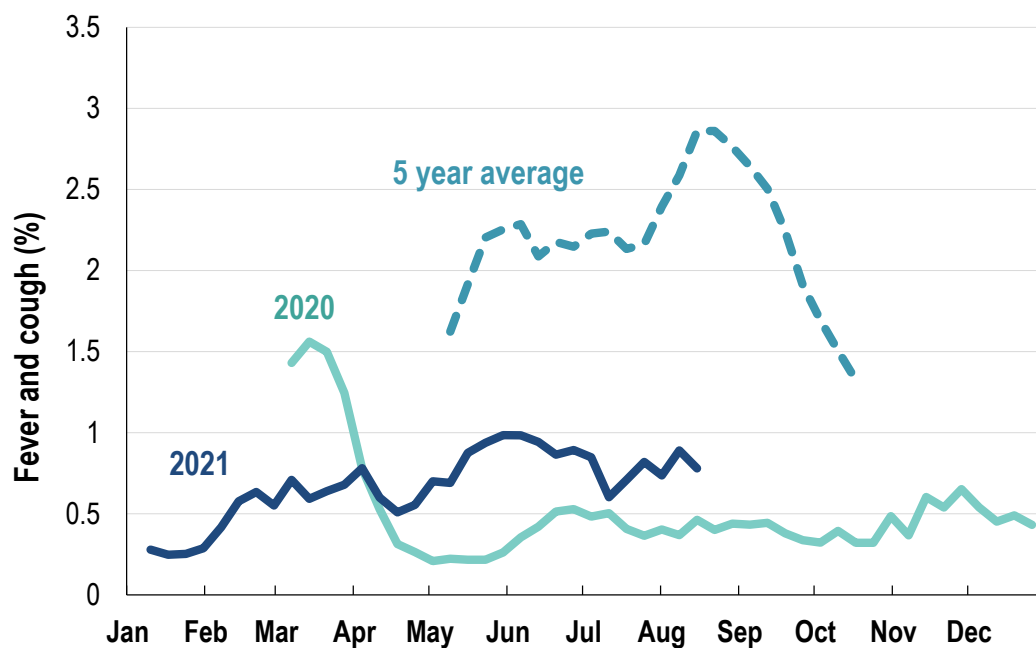


This week influenza-like illness activity is low 66,662 participants this week

Influenza-like illness activity*:

*Influenza-like illness activity is defined as fever & cough for this report

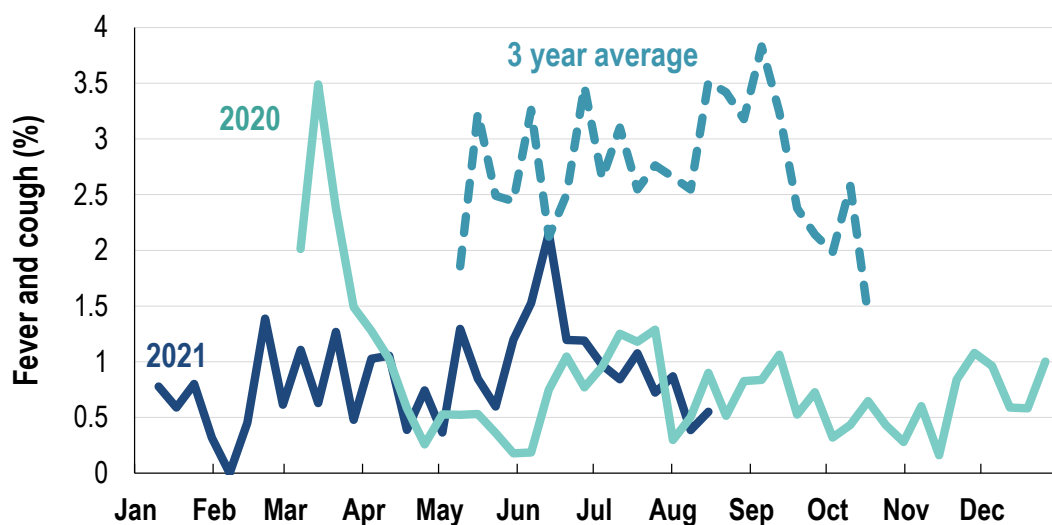
0.8% this week: flu-like illness activity is low



*5 year average is calculated using 2015, 2016, 2017, 2018 and 2019 data
^ Data are age standardised in this chart

Influenza-like illness activity among Aboriginal and Torres Strait Islander participants

0.6% this week: flu-like illness activity is low

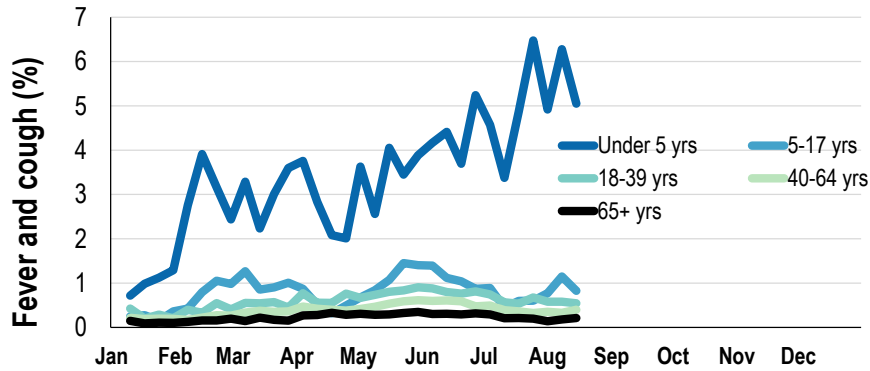


*Average Number of Aboriginal and Torres Strait Islander Participants = 737
^3 year average is calculated using 2017, 2018 and 2019 data

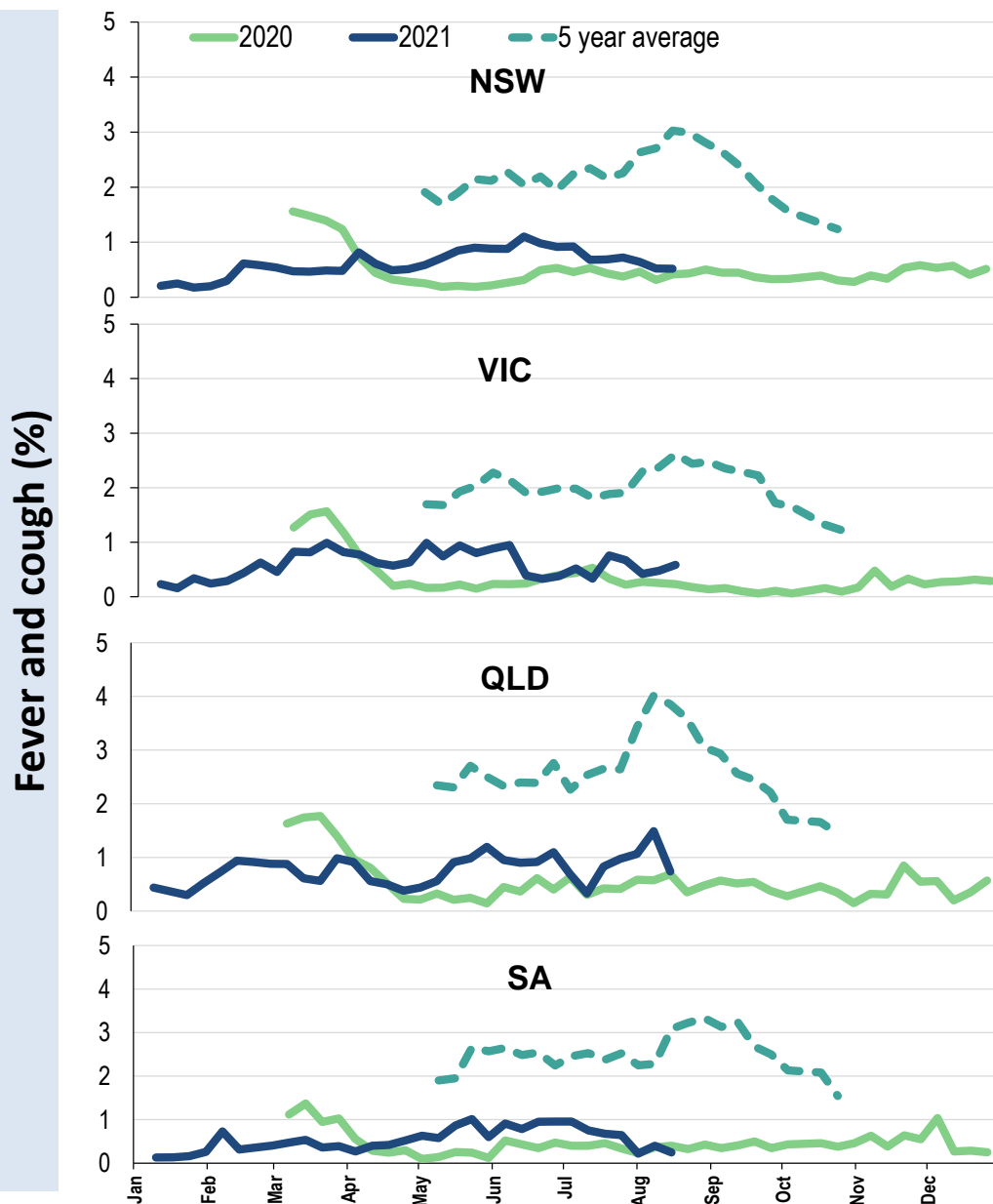
Influenza-like illness severity: <i>53% of participants with fever and cough sought medical advice this week</i>		
Influenza-like illness Severity	Week ending 15 August 2021 number (%)	Week ending 08 August 2021 number (%)
Number of participants	66662 (100%)	67180 (100%)
Fever & cough	313 (0.5%)	323 (0.5%)
Fever, cough & time-off normal duties	212 (0.3%)	232 (0.3%)
Fever, cough & 3 or more days off work/normal duties	212 (0.3%)	232 (0.3%)
Number of participants with fever and cough	313 (100%)	323 (100%)
*Sought medical advice for fever and cough	166 (53%)	189 (58.5%)
Admitted to hospital	5 (1.6%)	3 (0.9%)
Tested for influenza	31 (9.9%)	34 (10.5%)
Tested, result positive for influenza	2 (0.6%)	5 (1.5%)
Tested for coronavirus (COVID-19)	152 (48.6%)	170 (52.6%)
Tested, result positive for coronavirus (COVID-19)	0 (0%)	1 (0.3%)

*Includes those who sought medical advice from a general practitioner, COVID-19 clinic, emergency department, or were admitted to hospital for fever & cough

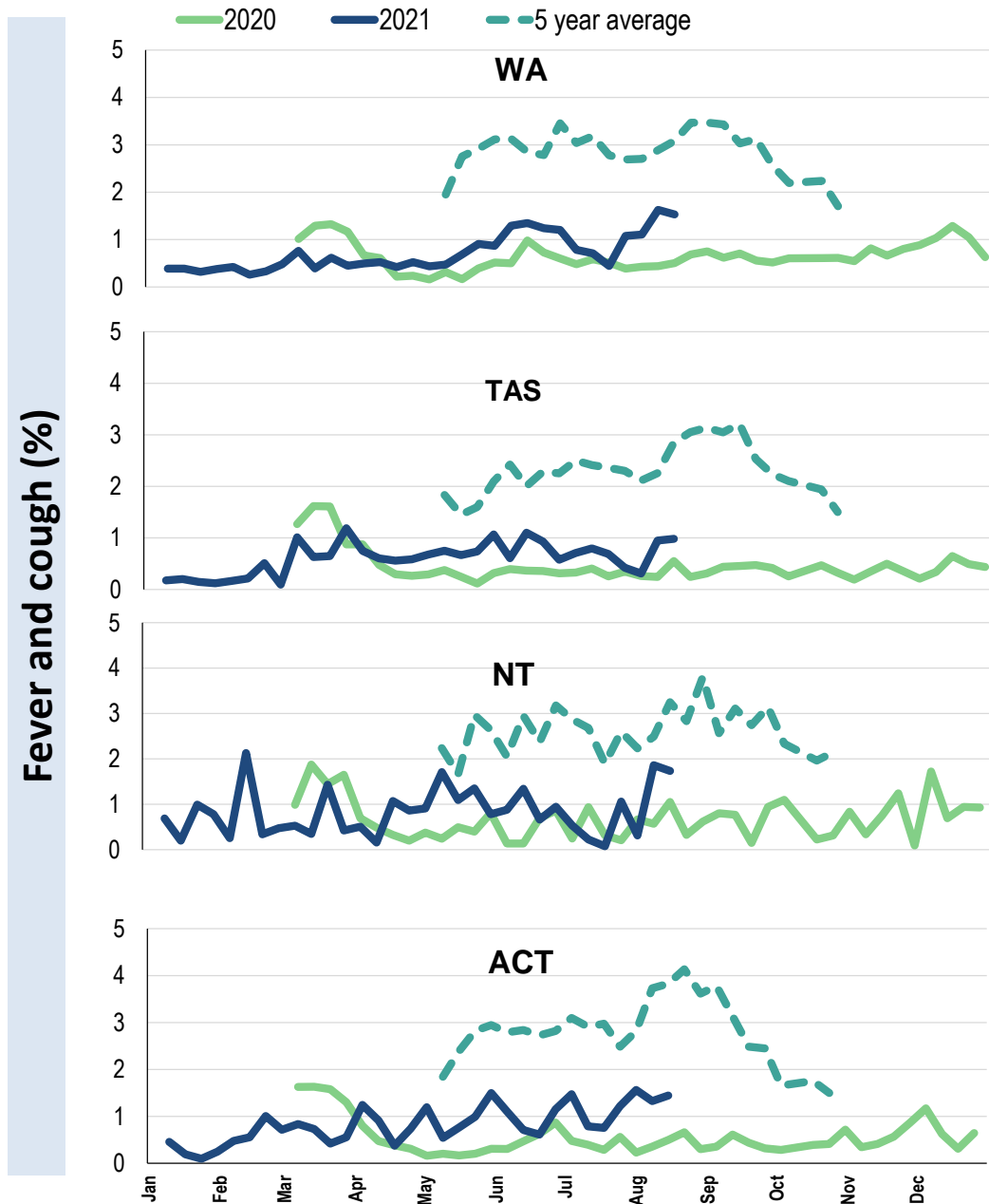
Influenza-like illness activity by age group (Australia):



Influenza-like illness activity by state/territory (age standardised):



Influenza-like illness activity by state/territory (age standardised):

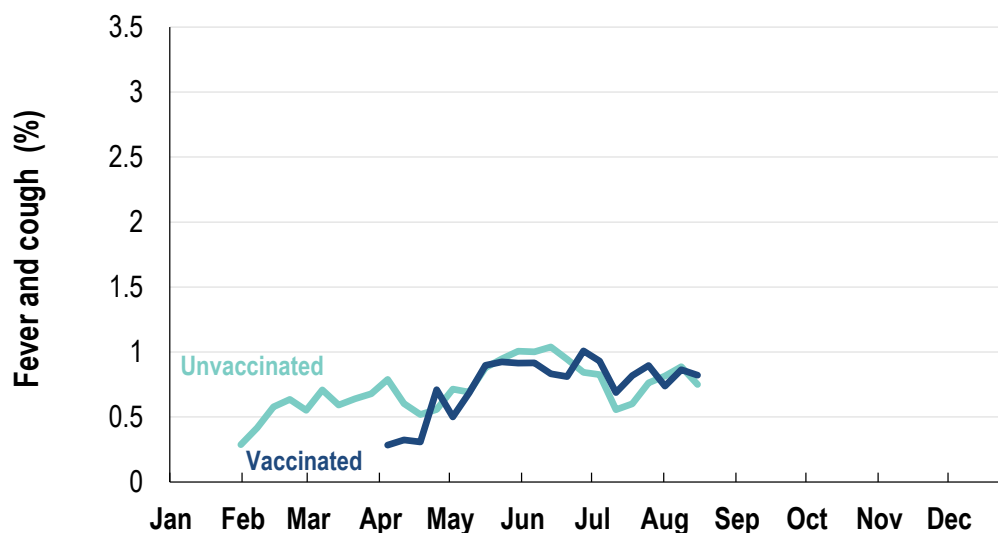


Participation:
66,662 participants (67,180 last week)

State	Participants	%	Rate/100,000 population
NSW	23366	35.1%	295.9
VIC	13472	20.2%	211.9
QLD	8215	12.3%	166.0
SA	5794	8.7%	335.5
WA	6650	10.0%	257.0
TAS	4305	6.5%	824.7
NT	1072	1.6%	435.6
ACT	3788	5.7%	918.1
AUS	66662	100.0%	269.9

Vaccination rates:
Vaccinated participants:

	COVID-19 vaccine		Influenza (%)
	At least 1 dose (%)	2 doses (%)	
<5 years			55.2
5-17 years	2.5	1.1	36.8
18-64 years	81.6	57.3	71.5
65+ years	95.3	68.9	90.2
Working with patients	93.8	82.6	84.6
Aboriginal and/or Torres Strait Islander	61.8	43.7	65.4
Vaccinated overall (%)	77.8	55.2	74.2



* Data are age standardised in this chart

*2021 Influenza vaccination data not available until 04/04/21 due to low counts

