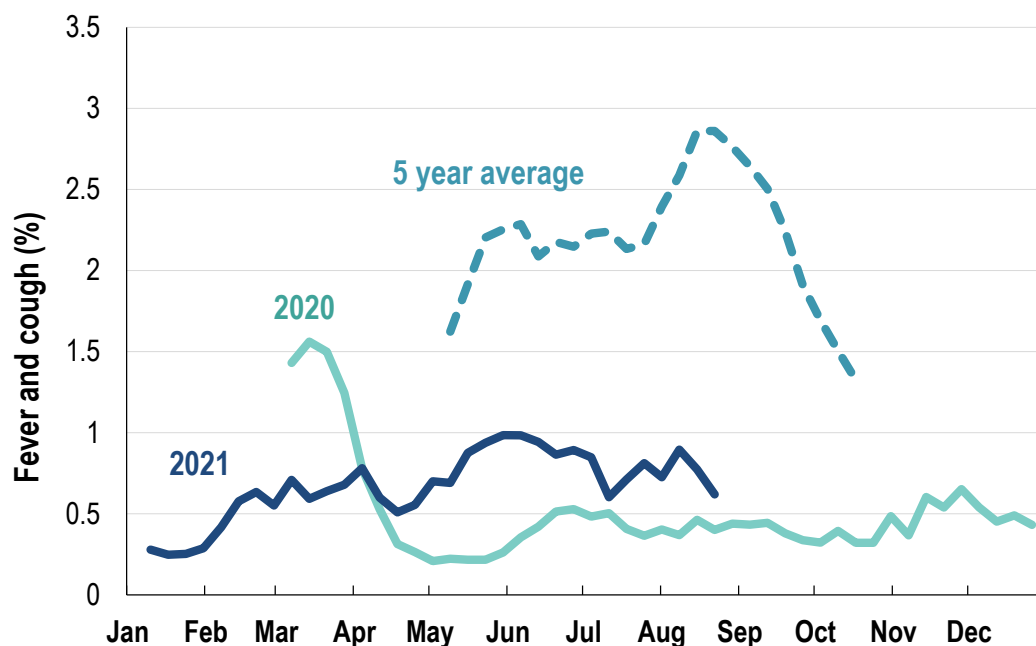


This week influenza-like illness activity is low 67,210 participants this week

Influenza-like illness activity*:

*Influenza-like illness activity is defined as fever & cough for this report

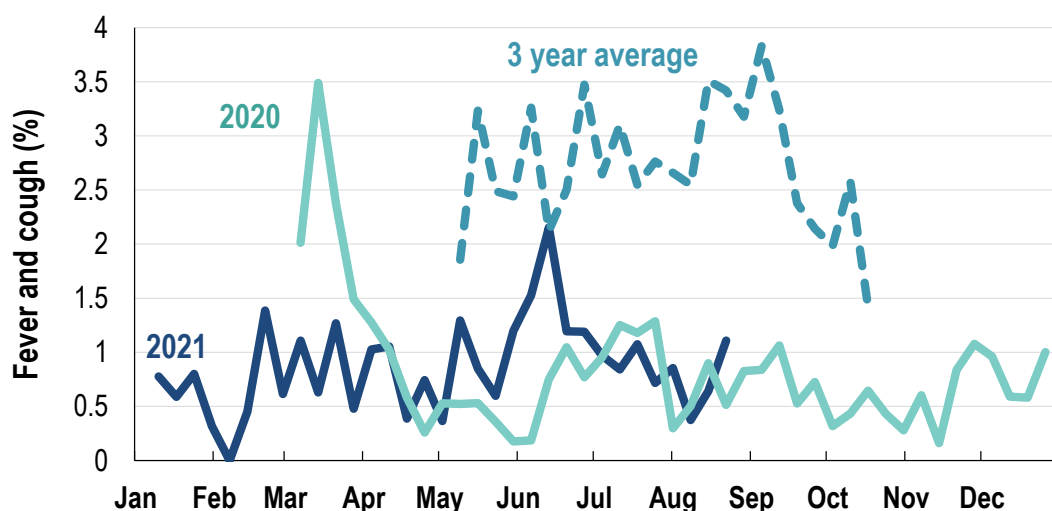
0.6% this week: flu-like illness activity is low



*5 year average is calculated using 2015, 2016, 2017, 2018 and 2019 data
^ Data are age standardised in this chart

Influenza-like illness activity among Aboriginal and Torres Strait Islander participants

1.1% this week: flu-like illness activity is low



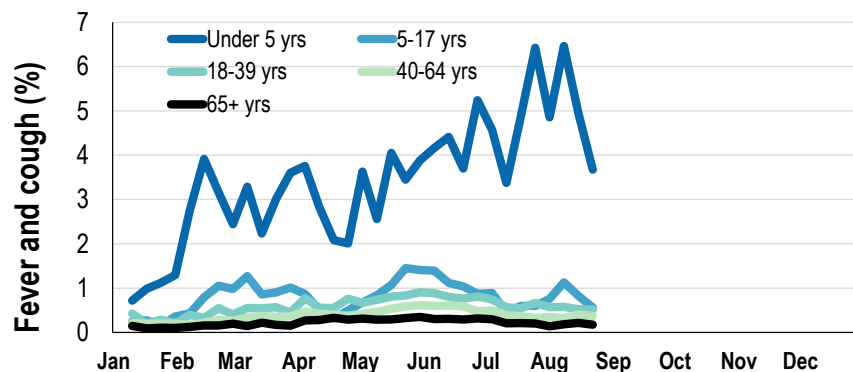
*Average Number of Aboriginal and Torres Strait Islander Participants = 740

^3 year average is calculated using 2017, 2018 and 2019 data

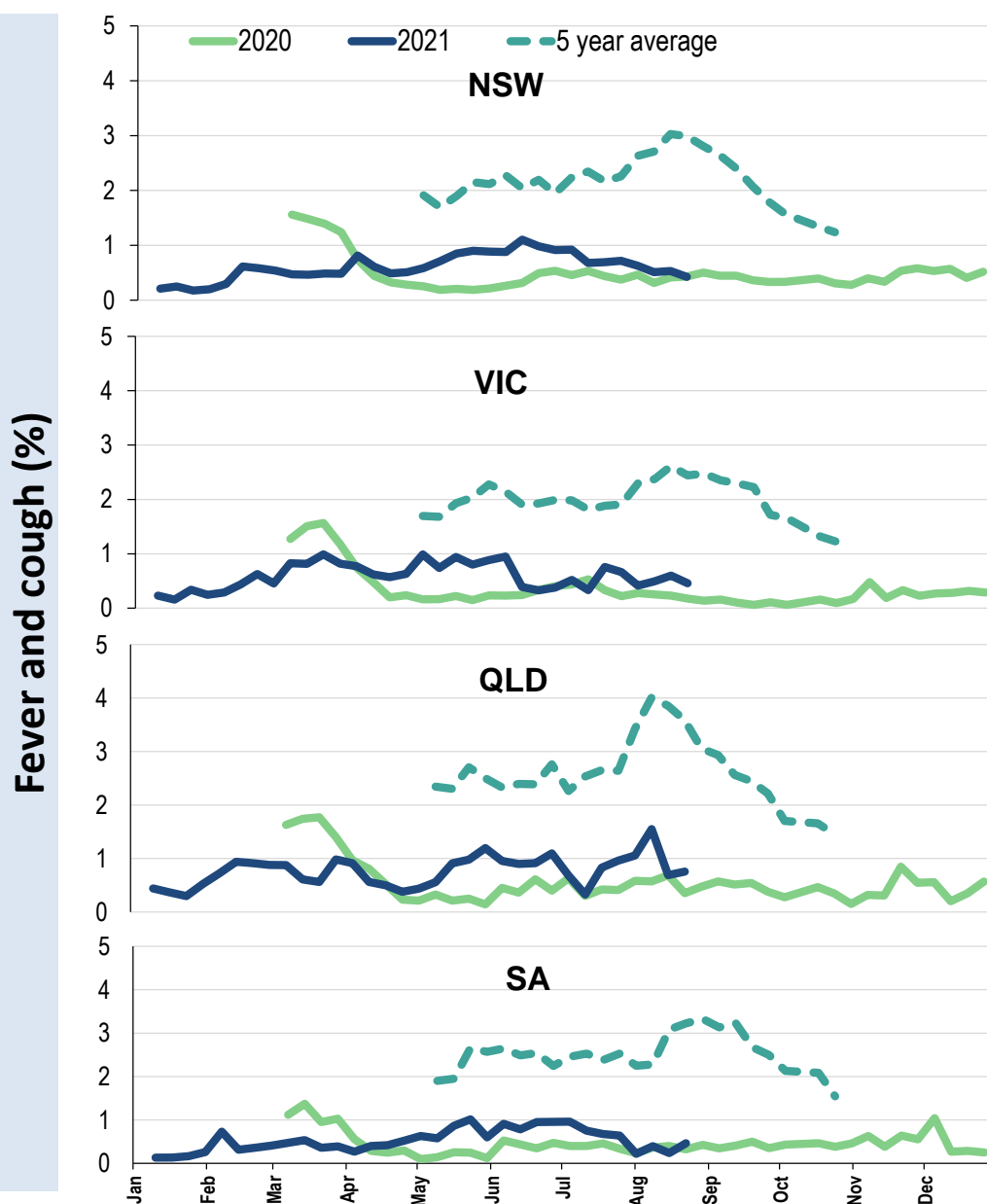
Influenza-like illness severity: <i>53.6% of participants with fever and cough sought medical advice this week</i>		
Influenza-like illness Severity	Week ending 22 August 2021	Week ending 15 August 2021
	number (%)	number (%)
Number of participants	67210 (100%)	66662 (100%)
Fever & cough	267 (0.4%)	313 (0.5%)
Fever, cough & time-off normal duties	187 (0.3%)	220 (0.3%)
Fever, cough & 3 or more days off work/normal duties	187 (0.3%)	220 (0.3%)
Number of participants with fever and cough	267 (100%)	313 (100%)
*Sought medical advice for fever and cough	143 (53.6%)	180 (57.5%)
Admitted to hospital	5 (1.9%)	5 (1.6%)
Tested for influenza	23 (8.6%)	35 (11.2%)
Tested, result positive for influenza	2 (0.7%)	4 (1.3%)
Tested for coronavirus (COVID-19)	124 (46.4%)	172 (55%)
Tested, result positive for coronavirus (COVID-19)	0 (0%)	0 (0%)

*Includes those who sought medical advice from a general practitioner, COVID-19 clinic, emergency department, or were admitted to hospital for fever & cough

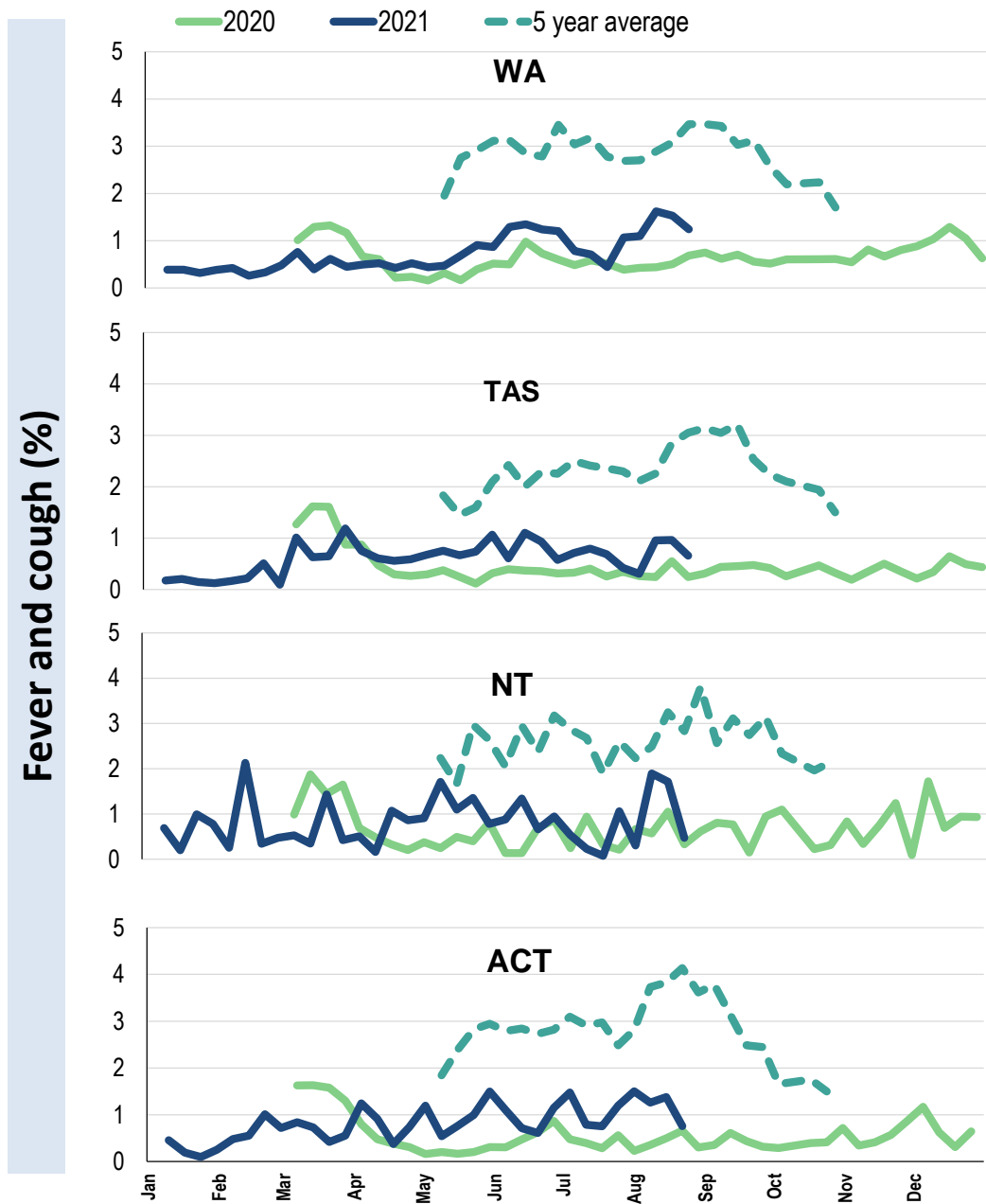
Influenza-like illness activity by age group (Australia):



Influenza-like illness activity by state/territory (age standardised):



Influenza-like illness activity by state/territory (age standardised):

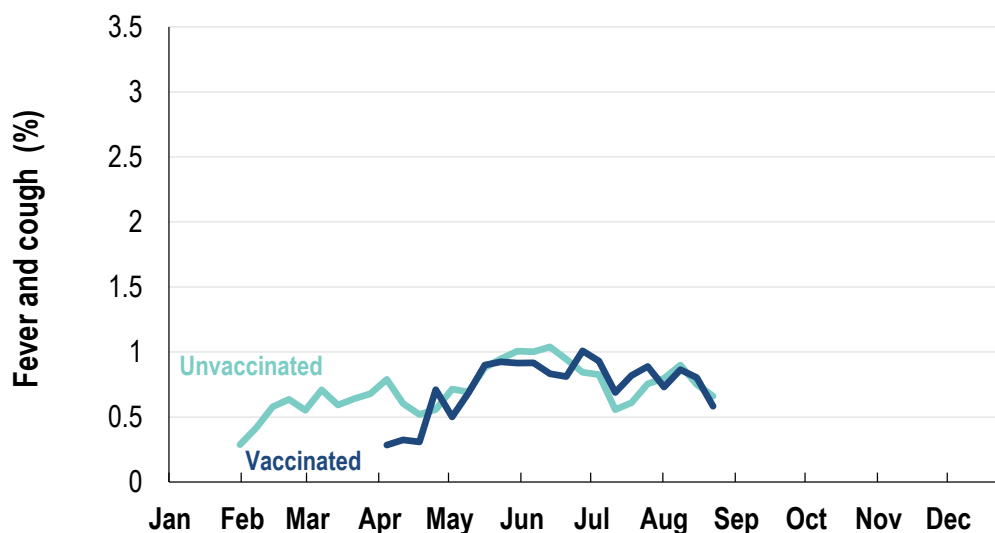


Participation:
67,210 participants (66,662 last week)

State	Participants	% Rate/100,000 population
NSW	23761	35.4% 300.9
VIC	13528	20.1% 212.7
QLD	8254	12.3% 166.8
SA	5790	8.6% 335.3
WA	6668	9.9% 257.7
TAS	4254	6.3% 814.9
NT	1104	1.6% 448.6
ACT	3851	5.7% 933.3
AUS	67210	100.0% 272.1

Vaccination rates:
Vaccinated participants:

	COVID-19 vaccine		Influenza (%)
	At least 1 dose (%)	2 doses (%)	
<5 years			55.2
5-17 years	3.6	1.2	37.2
18-64 years	84.5	63.5	71.5
65+ years	95.9	75.6	90.4
Working with patients	94.8	85.6	84.7
Aboriginal and/or Torres Strait Islander	64.1	47.1	64.0
Vaccinated overall (%)	79.7	60.9	74.2



* Data are age standardised in this chart

^2021 Influenza vaccination data not available until 04/04/21 due to low counts

