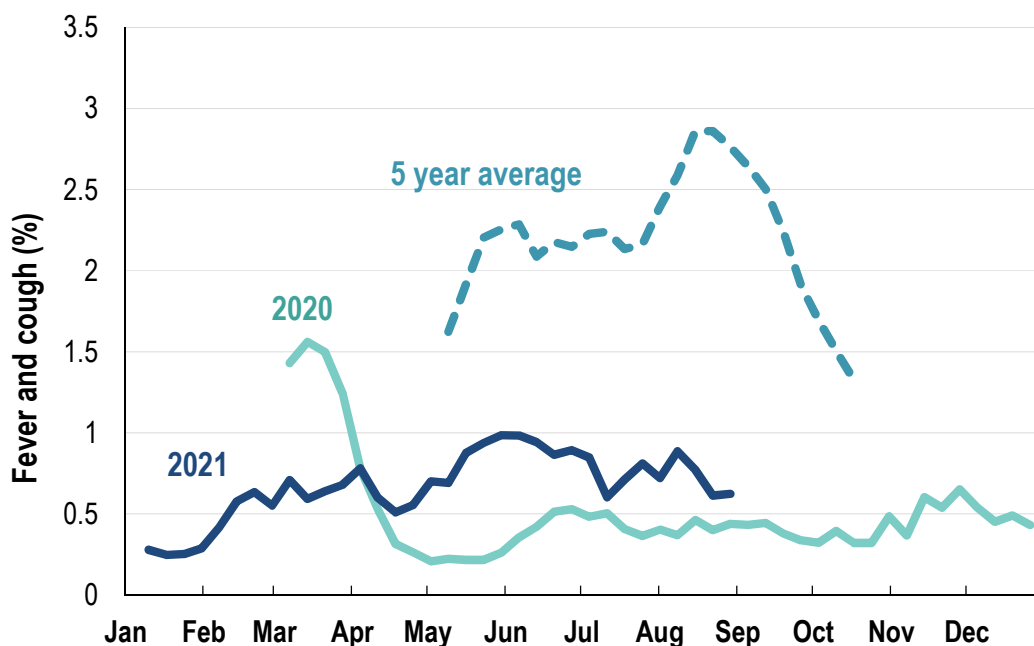


This week influenza-like illness activity is low 66,893 participants this week

Influenza-like illness activity*:

*Influenza-like illness activity is defined as fever & cough for this report

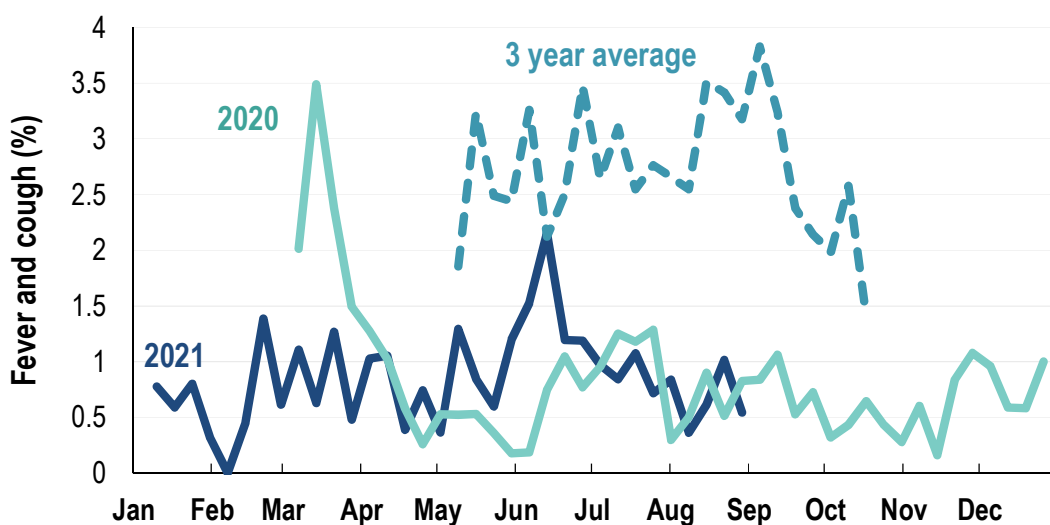
0.6% this week: flu-like illness activity is low



*5 year average is calculated using 2015, 2016, 2017, 2018 and 2019 data
^ Data are age standardised in this chart

Influenza-like illness activity among Aboriginal and Torres Strait Islander participants

0.5% this week: flu-like illness activity is low



*Average Number of Aboriginal and Torres Strait Islander Participants = 744

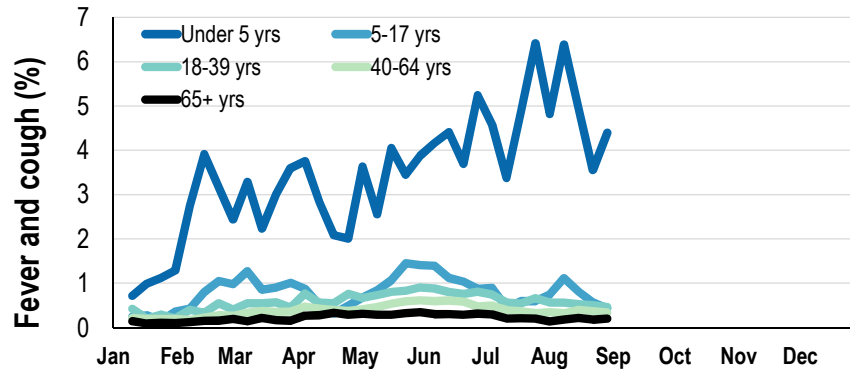
*3 year average is calculated using 2017, 2018 and 2019 data

Influenza-like illness severity: <i>49% of participants with fever and cough sought medical advice this week</i>		
Influenza-like illness Severity	Week ending 29 August 2021 number (%)	Week ending 22 August 2021 number (%)
Number of participants	66893 (100%)	67210 (100%)
Fever & cough	257 (0.4%)	266 (0.4%)
Fever, cough & time-off normal duties	172 (0.3%)	198 (0.3%)
Fever, cough & 3 or more days off work/normal duties	172 (0.3%)	198 (0.3%)
Number of participants with fever and cough	257 (100%)	266 (100%)
*Sought medical advice for fever and cough	126 (49%)	154 (57.9%)
Admitted to hospital	2 (0.8%)	6 (2.3%)
Tested for influenza	25 (9.7%)	27 (10.2%)
Tested, result positive for influenza	3 (1.2%)	2 (0.8%)
Tested for coronavirus (COVID-19)	113 (44%)	142 (53.4%)
Tested, result positive for coronavirus (COVID-19)	2 (0.8%)	0 (0%)

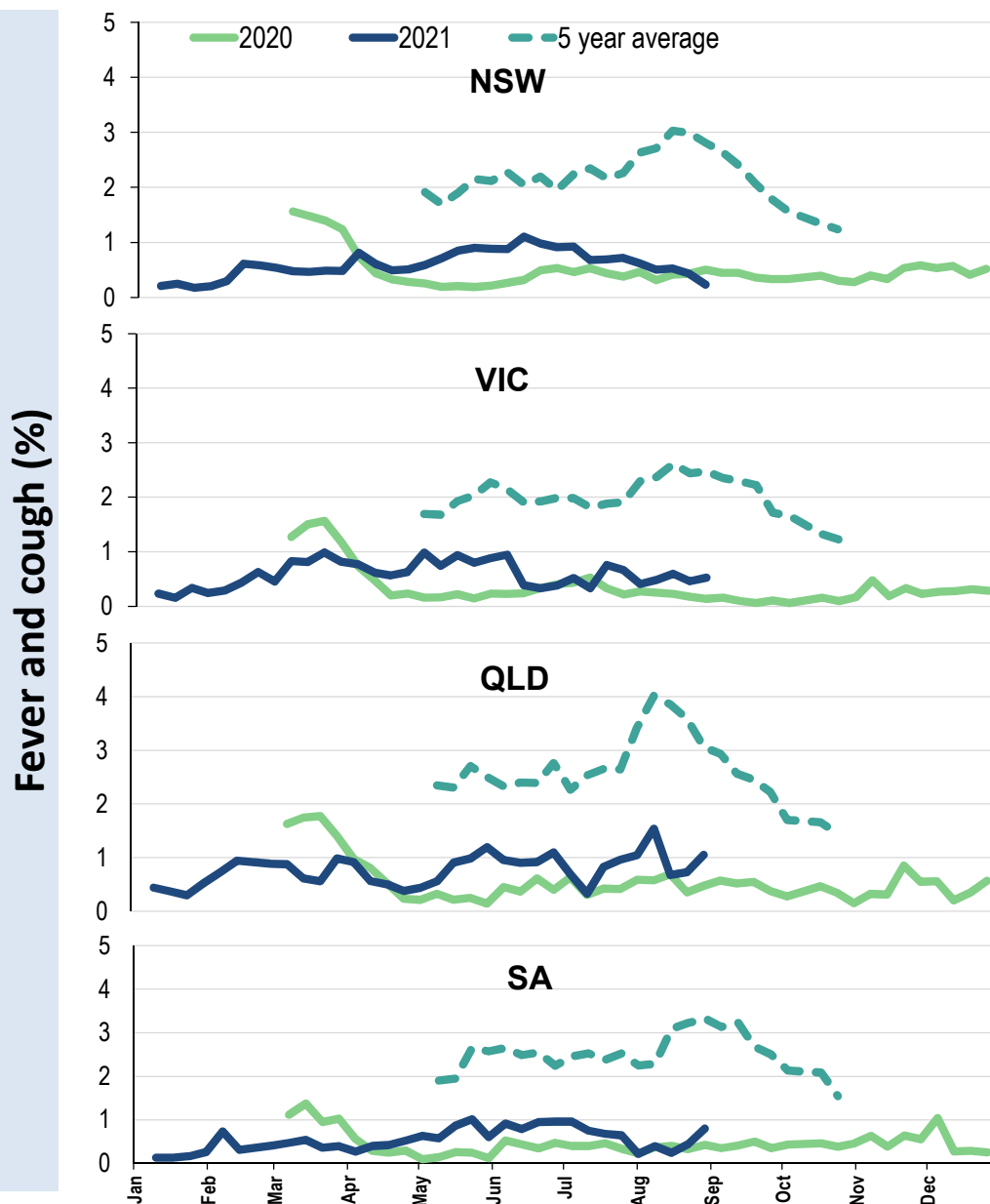
*Includes those who sought medical advice from a general practitioner, COVID-19 clinic, emergency department, or were admitted to hospital for fever & cough



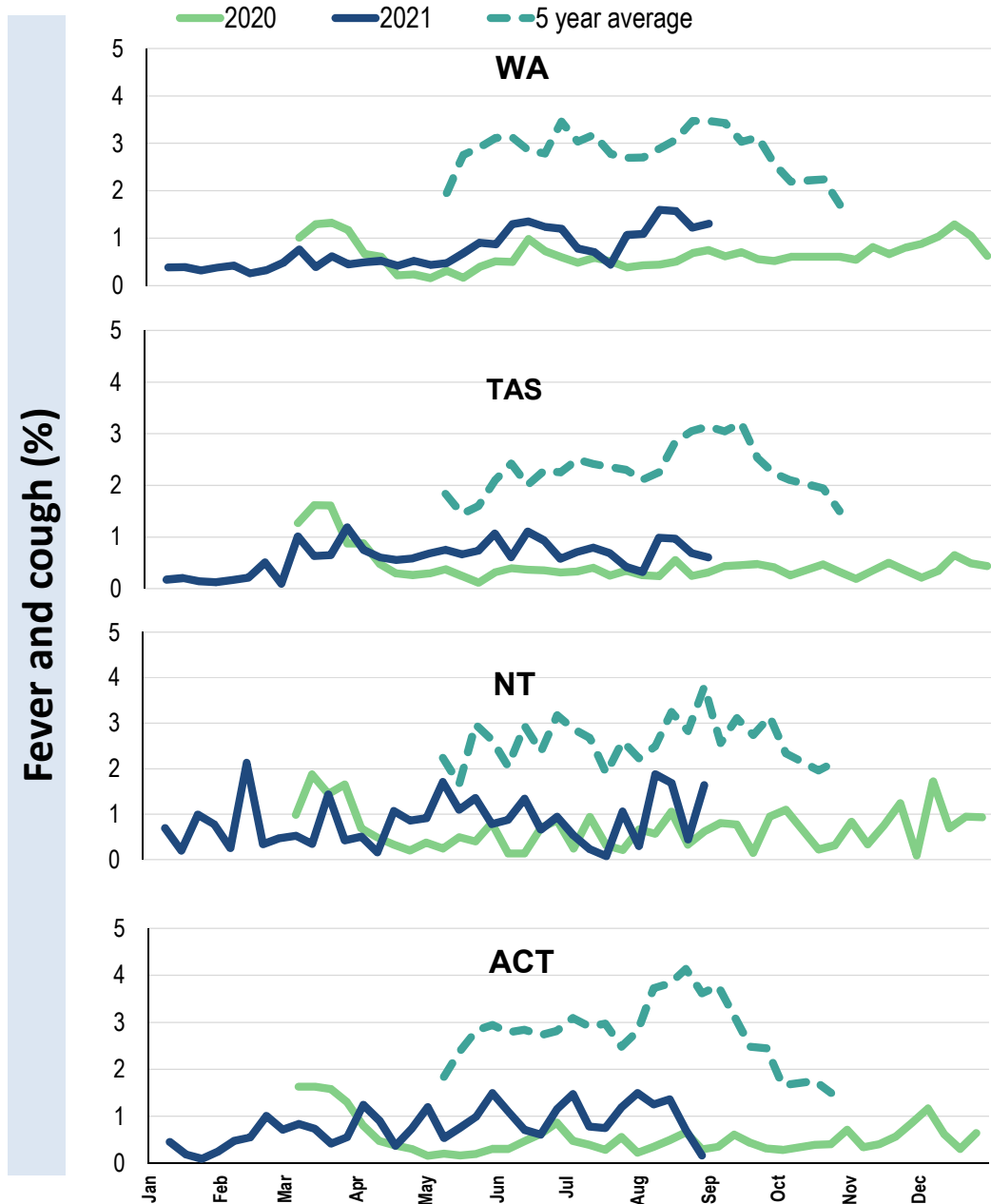
Influenza-like illness activity by age group (Australia):



Influenza-like illness activity by state/territory (age standardised):



Influenza-like illness activity by state/territory (age standardised):

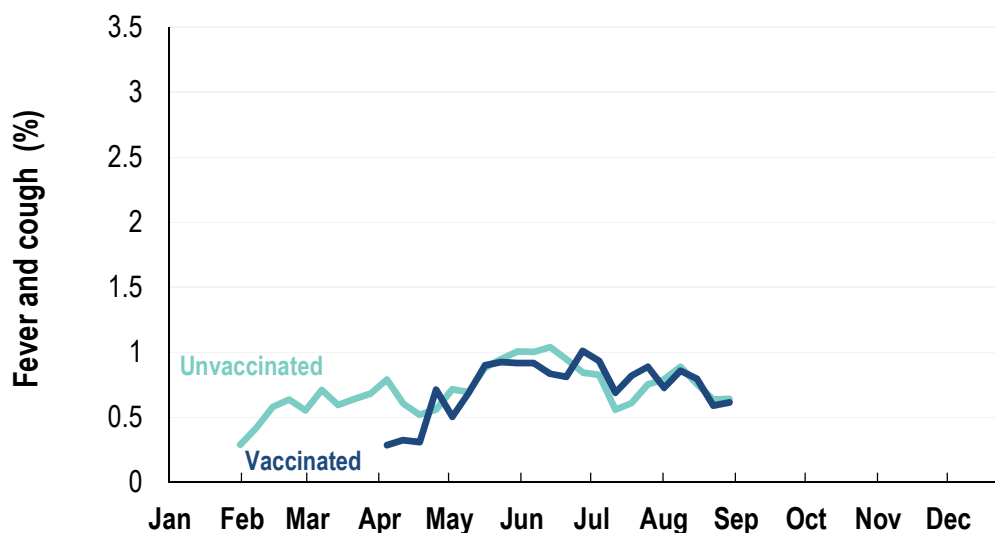


Participation:
66,893 participants (67,210 last week)

State	Participants	% Rate/100,000 population
NSW	23635	35.3% 299.3
VIC	13345	19.9% 209.9
QLD	8126	12.1% 164.2
SA	5845	8.7% 338.5
WA	6697	10.0% 258.9
TAS	4290	6.4% 821.8
NT	1131	1.7% 459.6
ACT	3824	5.7% 926.8
AUS	66893	100.0% 270.8

Vaccination rates:
Vaccinated participants:

	COVID-19 vaccine		Influenza (%)
	At least 1 dose (%)	2 doses (%)	
<5 years			57.0
5-17 years	5.8	1.5	37.4
18-64 years	87.5	69.1	71.7
65+ years	96.5	81.0	90.5
Working with patients	95.8	88.1	85.1
Aboriginal and/or Torres Strait Islander	65.4	50.1	65.0
Vaccinated overall (%)	81.8	65.9	74.4



* Data are age standardised in this chart

^2021 Influenza vaccination data not available until 04/04/21 due to low counts

