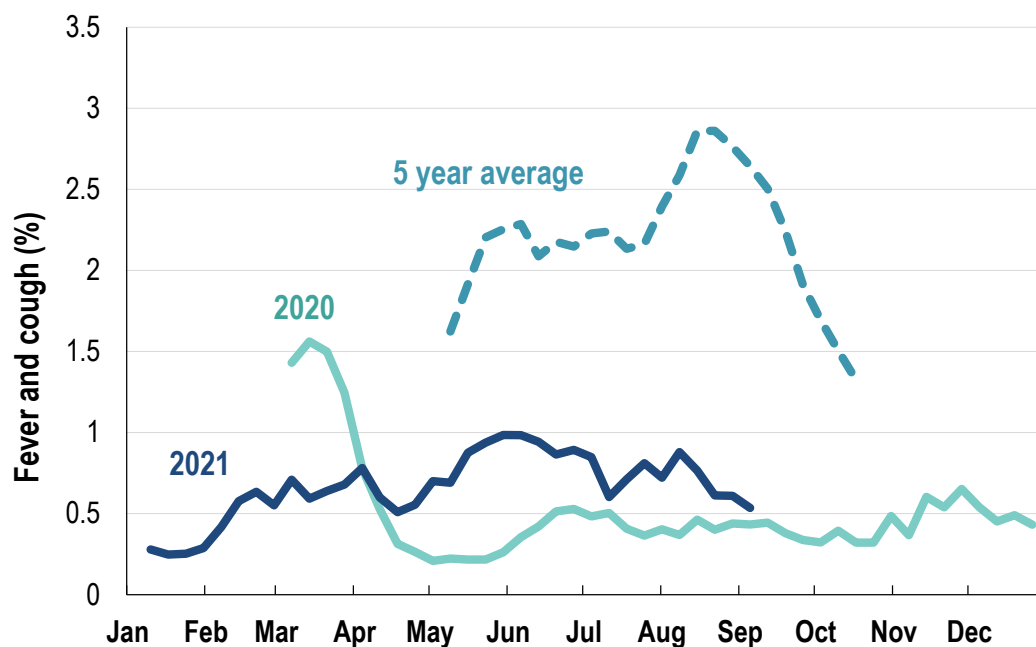


This week influenza-like illness activity is low 66,345 participants this week

Influenza-like illness activity*:

*Influenza-like illness activity is defined as fever & cough for this report

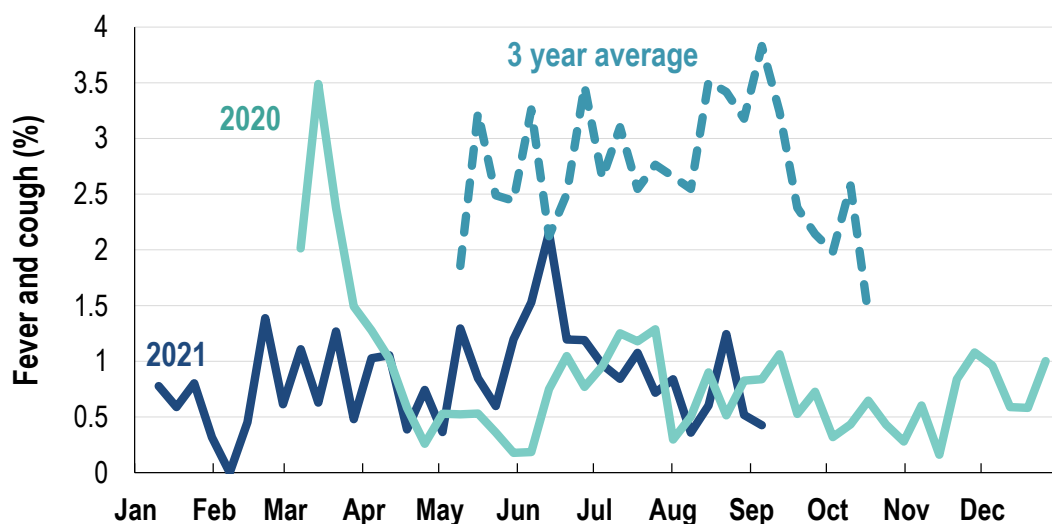
0.5% this week: flu-like illness activity is low



*5 year average is calculated using 2015, 2016, 2017, 2018 and 2019 data
^ Data are age standardised in this chart

Influenza-like illness activity among Aboriginal and Torres Strait Islander participants

0.4% this week: flu-like illness activity is low



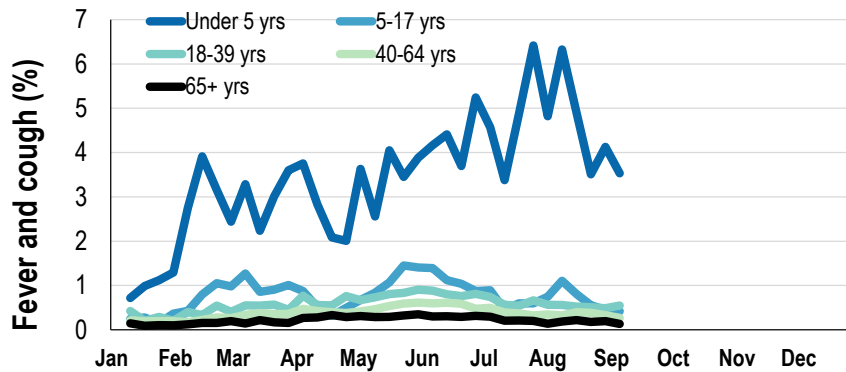
*Average Number of Aboriginal and Torres Strait Islander Participants = 745

*3 year average is calculated using 2017, 2018 and 2019 data

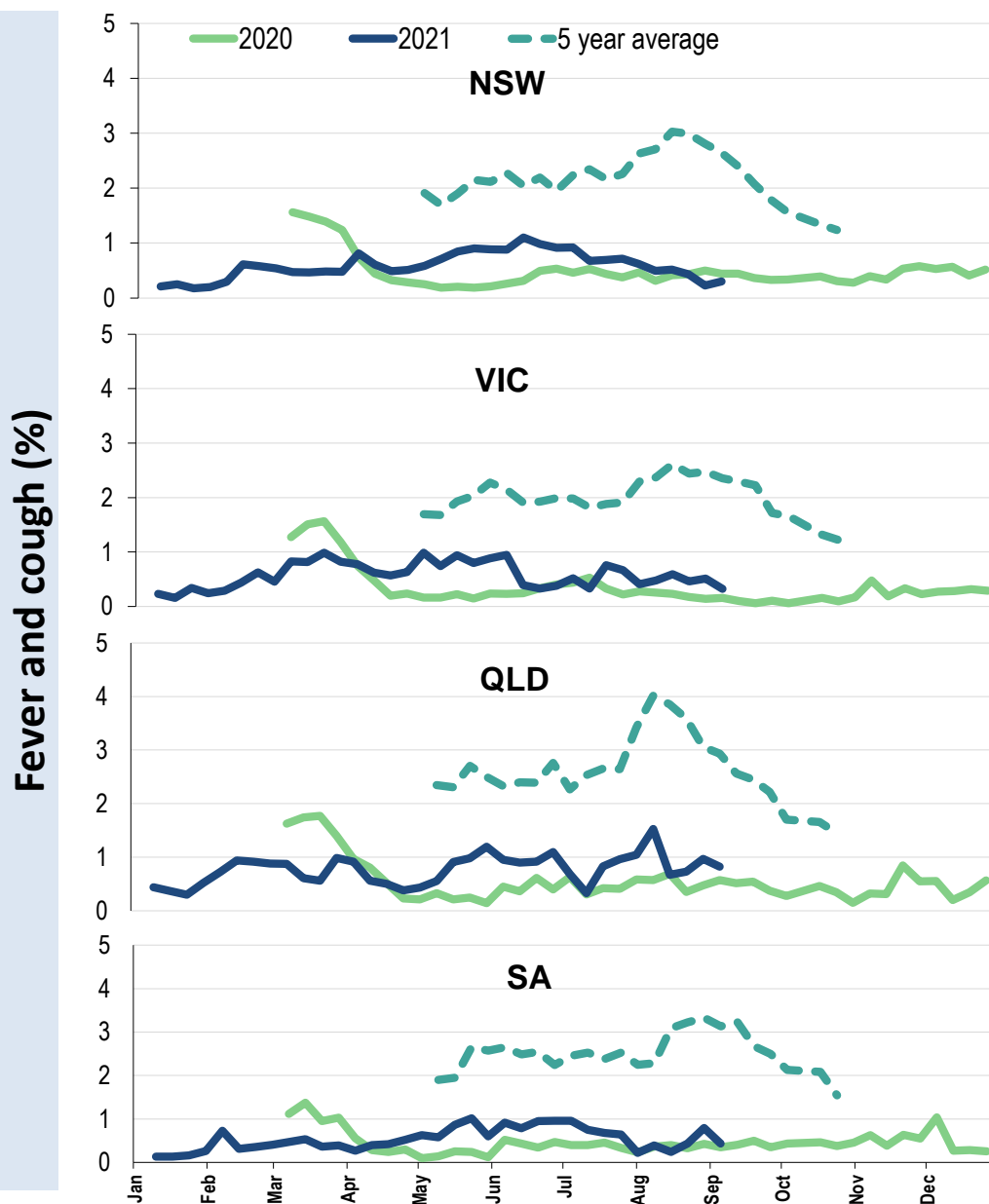
Influenza-like illness severity: <i>54.6% of participants with fever and cough sought medical advice this week</i>		
Influenza-like illness Severity	Week ending 05 September 2021 number (%)	Week ending 29 August 2021 number (%)
Number of participants	66345 (100%)	66893 (100%)
Fever & cough	216 (0.3%)	257 (0.4%)
Fever, cough & time-off normal duties	139 (0.2%)	182 (0.3%)
Fever, cough & 3 or more days off work/normal duties	139 (0.2%)	182 (0.3%)
Number of participants with fever and cough	216 (100%)	257 (100%)
*Sought medical advice for fever and cough	118 (54.6%)	136 (52.9%)
Admitted to hospital	4 (1.9%)	2 (0.8%)
Tested for influenza	19 (8.8%)	32 (12.5%)
Tested, result positive for influenza	1 (0.5%)	3 (1.2%)
Tested for coronavirus (COVID-19)	99 (45.8%)	123 (47.9%)
Tested, result positive for coronavirus (COVID-19)	5 (2.3%)	2 (0.8%)

*Includes those who sought medical advice from a general practitioner, COVID-19 clinic, emergency department, or were admitted to hospital for fever & cough

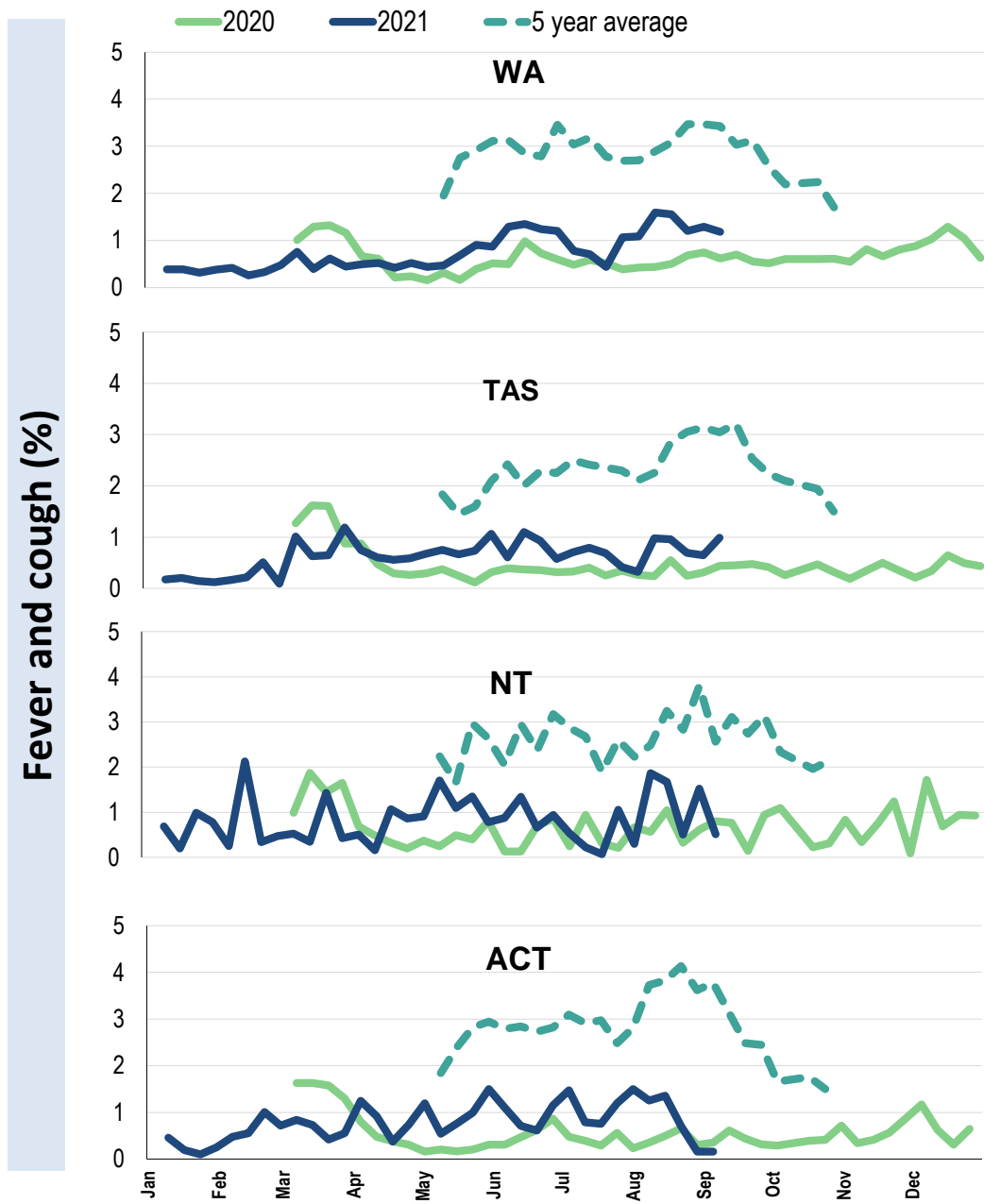
Influenza-like illness activity by age group (Australia):



Influenza-like illness activity by state/territory (age standardised):



Influenza-like illness activity by state/territory (age standardised):

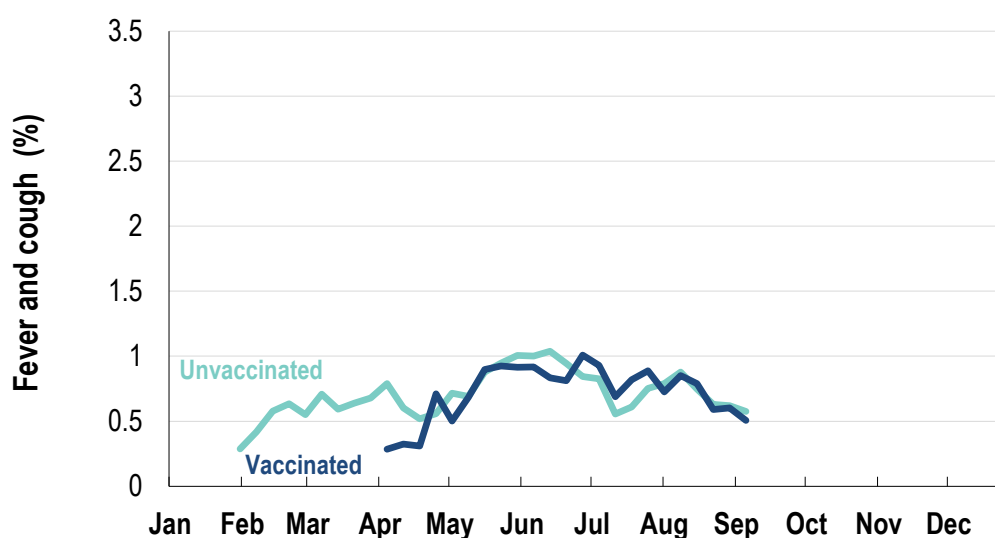


Participation:
66,345 participants (66,893 last week)

State	Participants	% Rate/100,000 population
NSW	23319	35.1% 295.3
VIC	13404	20.2% 210.8
QLD	8096	12.2% 163.6
SA	5778	8.7% 334.6
WA	6572	9.9% 254.0
TAS	4237	6.4% 811.7
NT	1132	1.7% 460.0
ACT	3807	5.7% 922.7
AUS	66345	100.0% 268.6

Vaccination rates:
Vaccinated participants:

	COVID-19 vaccine		Influenza (%)
	At least 1 dose (%)	2 doses (%)	
<5 years			56.5
5-17 years	8.2	1.9	37.8
18-64 years	89.7	73.6	72.0
65+ years	96.9	85.4	90.4
Working with patients	96.3	90.2	85.4
Aboriginal and/or Torres Strait Islander	69.5	54.0	65.9
Vaccinated overall (%)	83.6	70.1	74.6



* Data are age standardised in this chart

^2021 Influenza vaccination data not available until 04/04/21 due to low counts

