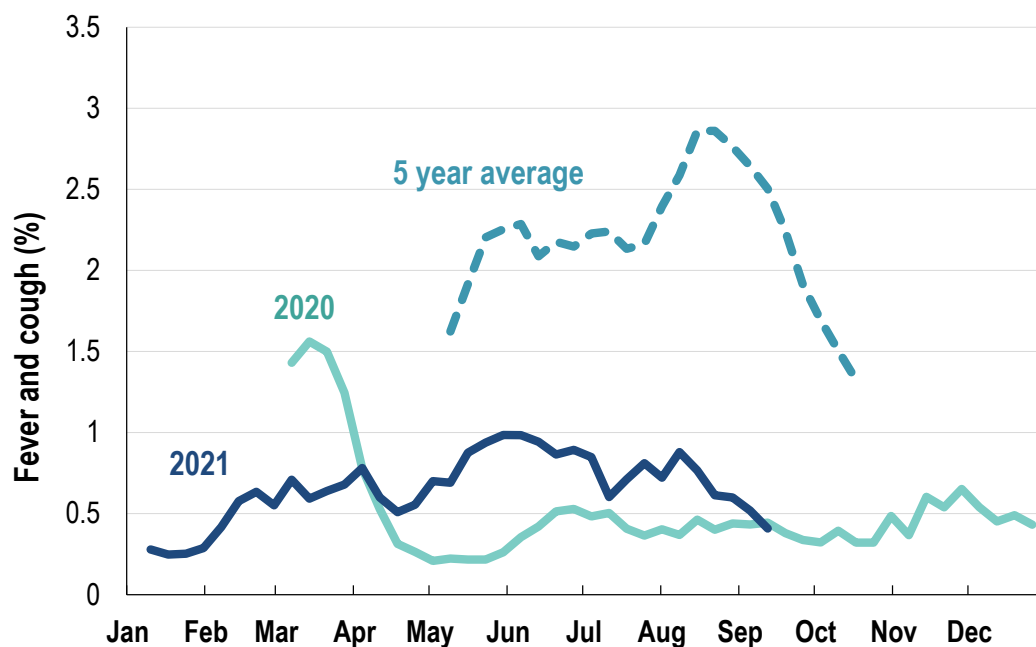


This week influenza-like illness activity is low 66,100 participants this week

Influenza-like illness activity*:

*Influenza-like illness activity is defined as fever & cough for this report

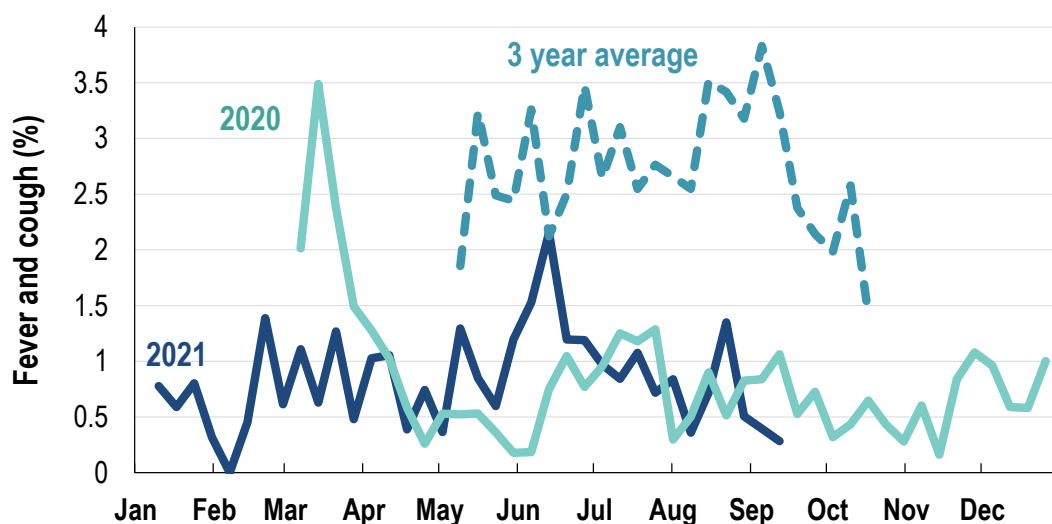
0.4% this week: flu-like illness activity is low



*5 year average is calculated using 2015, 2016, 2017, 2018 and 2019 data
^ Data are age standardised in this chart

Influenza-like illness activity among Aboriginal and Torres Strait Islander participants

0.3% this week: flu-like illness activity is low



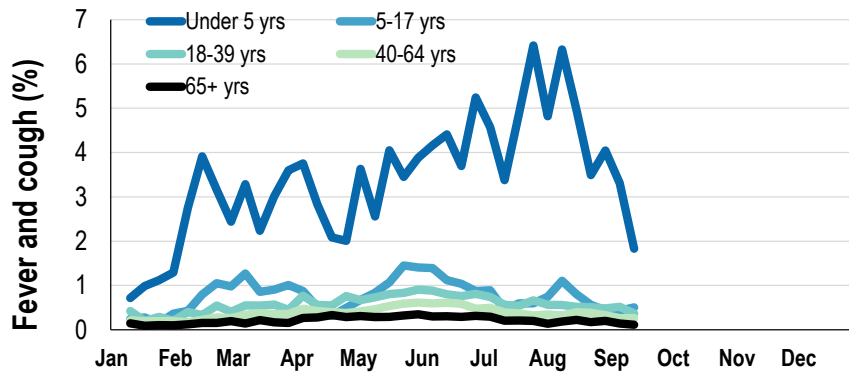
*Average Number of Aboriginal and Torres Strait Islander Participants = 747

*3 year average is calculated using 2017, 2018 and 2019 data

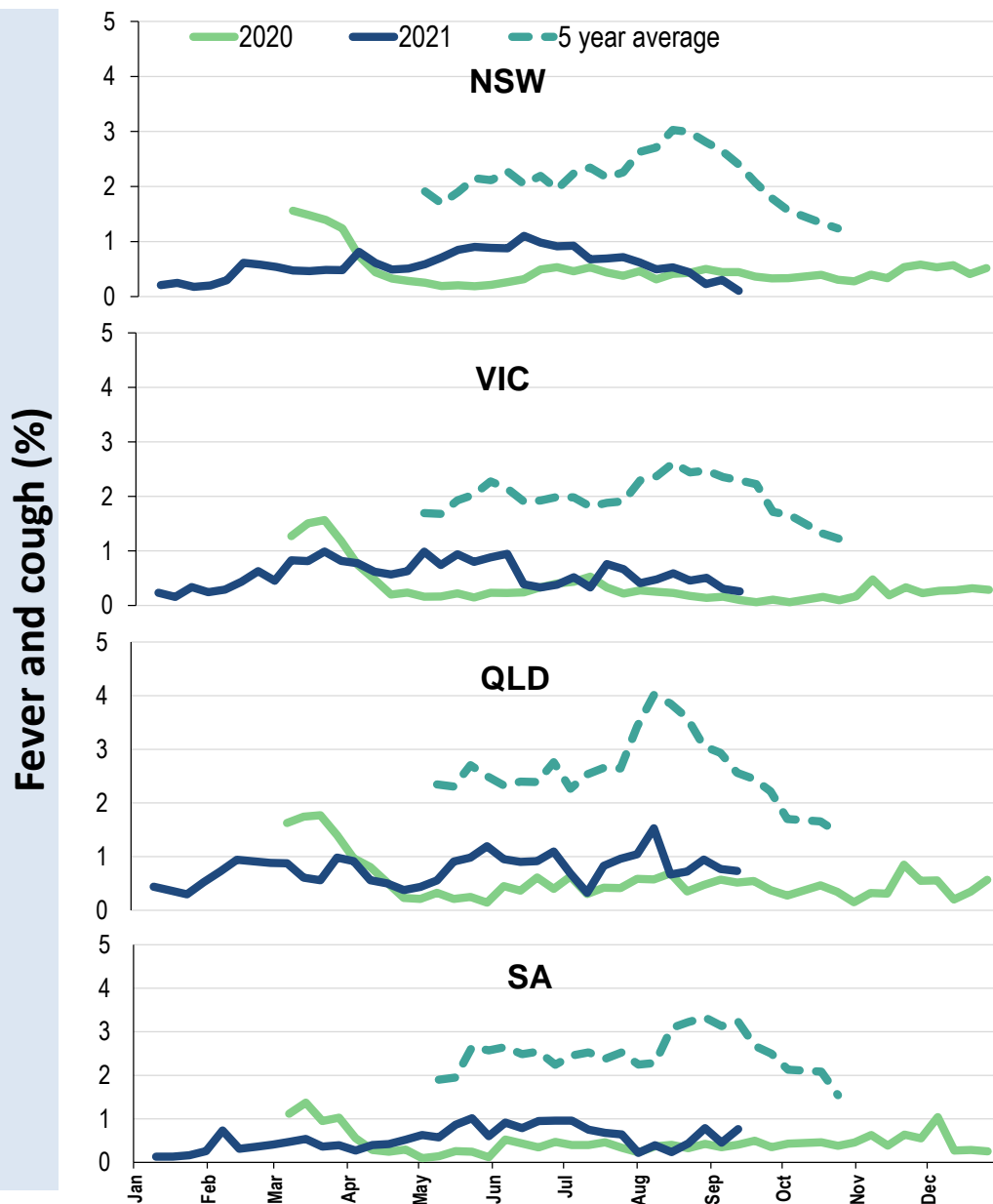
Influenza-like illness severity: <i>52.2% of participants with fever and cough sought medical advice this week</i>		
Influenza-like illness Severity	Week ending 12 September 2021 number (%)	Week ending 05 September 2021 number (%)
Number of participants	66100 (100%)	66345 (100%)
Fever & cough	182 (0.3%)	216 (0.3%)
Fever, cough & time-off normal duties	124 (0.2%)	147 (0.2%)
Fever, cough & 3 or more days off work/normal duties	124 (0.2%)	147 (0.2%)
Number of participants with fever and cough	182 (100%)	216 (100%)
*Sought medical advice for fever and cough	95 (52.2%)	123 (56.9%)
Admitted to hospital	4 (2.2%)	6 (2.8%)
Tested for influenza	12 (6.6%)	21 (9.7%)
Tested, result positive for influenza	2 (1.1%)	2 (0.9%)
Tested for coronavirus (COVID-19)	86 (47.3%)	107 (49.5%)
Tested, result positive for coronavirus (COVID-19)	0 (0%)	5 (2.3%)

*Includes those who sought medical advice from a general practitioner, COVID-19 clinic, emergency department, or were admitted to hospital for fever & cough

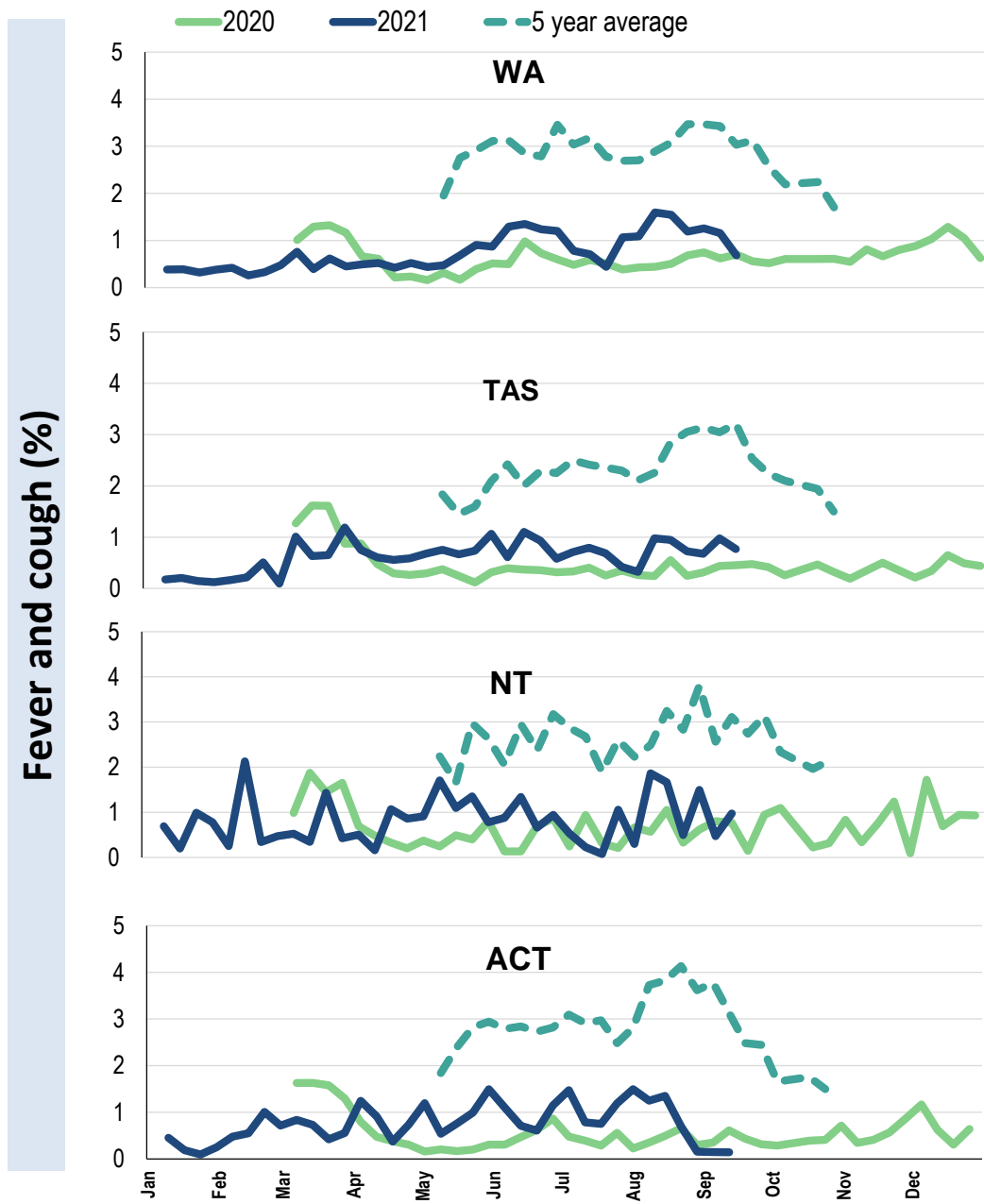
Influenza-like illness activity by age group (Australia):



Influenza-like illness activity by state/territory (age standardised):



Influenza-like illness activity by state/territory (age standardised):

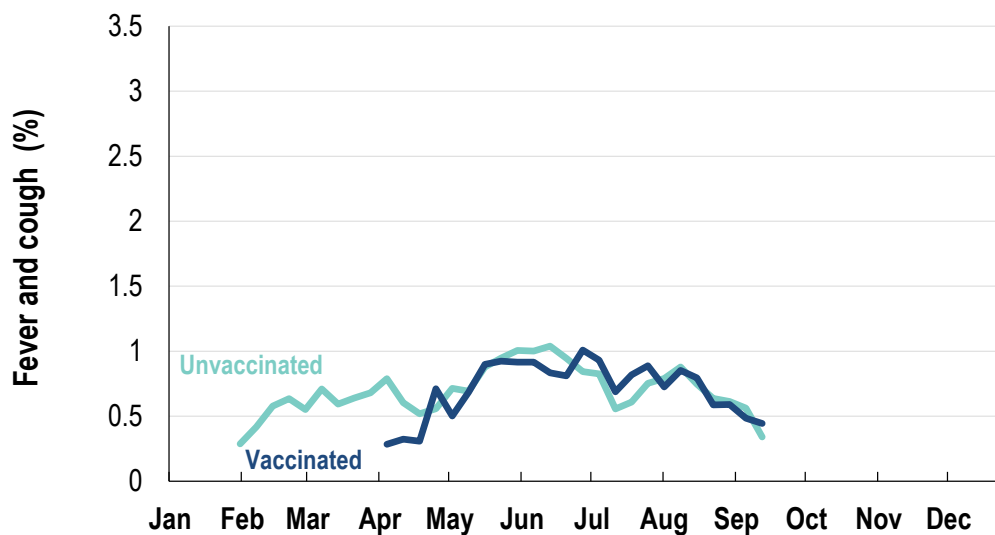


Participation:
66,100 participants (66,345 last week)

State	Participants	% Rate/100,000 population
NSW	23395	35.4% 296.3
VIC	13299	20.1% 209.1
QLD	8075	12.2% 163.2
SA	5684	8.6% 329.1
WA	6546	9.9% 253.0
TAS	4234	6.4% 811.1
NT	1083	1.6% 440.1
ACT	3784	5.7% 917.1
AUS	66100	100.0% 267.6

Vaccination rates:
Vaccinated participants:

	COVID-19 vaccine		Influenza (%)
	At least 1 dose (%)	2 doses (%)	
<5 years			56.1
5-17 years	12.0	2.6	37.7
18-64 years	92.0	77.6	72.1
65+ years	97.4	88.3	90.6
Working with patients	96.9	91.8	85.7
Aboriginal and/or Torres Strait Islander	72.9	59.9	66.4
Vaccinated overall (%)	85.4	73.3	74.8



* Data are age standardised in this chart

^2021 Influenza vaccination data not available until 04/04/21 due to low counts

