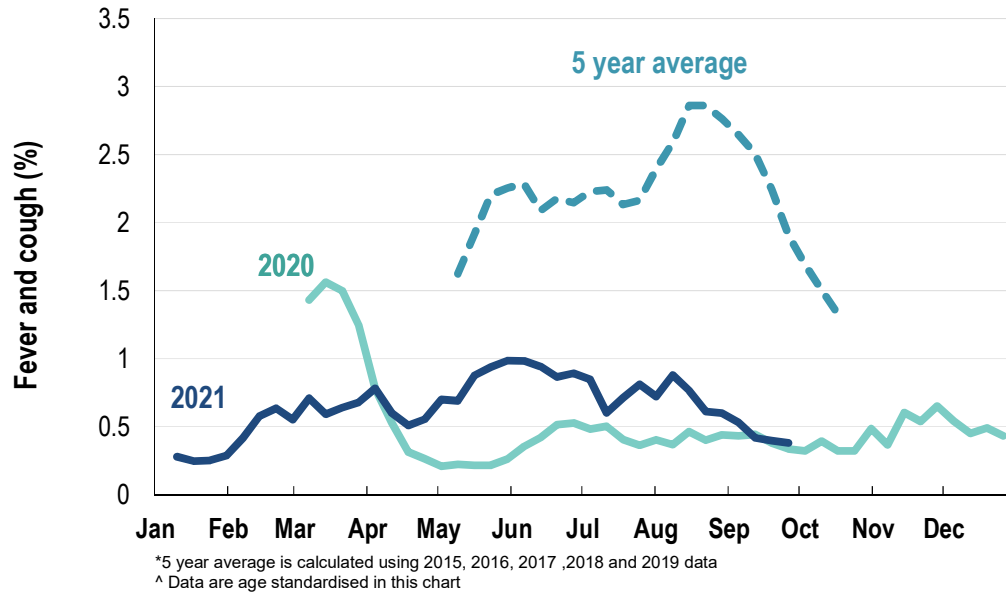


## This week influenza-like illness activity is low 64,453 participants this week

### Influenza-like illness activity\*:

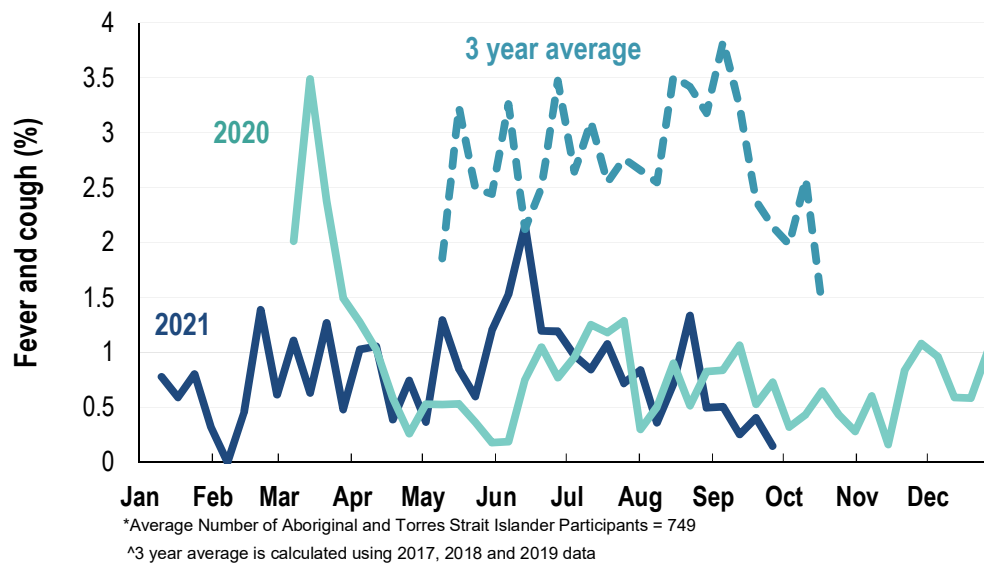
\*Influenza-like illness activity is defined as fever & cough for this report

**0.4% this week: flu-like illness activity is low**



### Influenza-like illness activity among Aboriginal and Torres Strait Islander participants

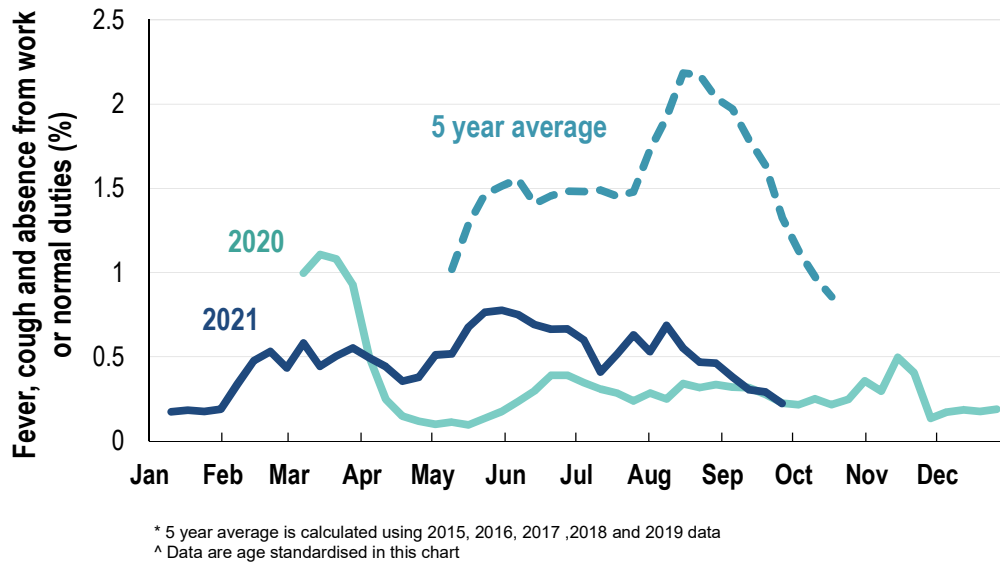
**0.1% this week: flu-like illness activity is low**



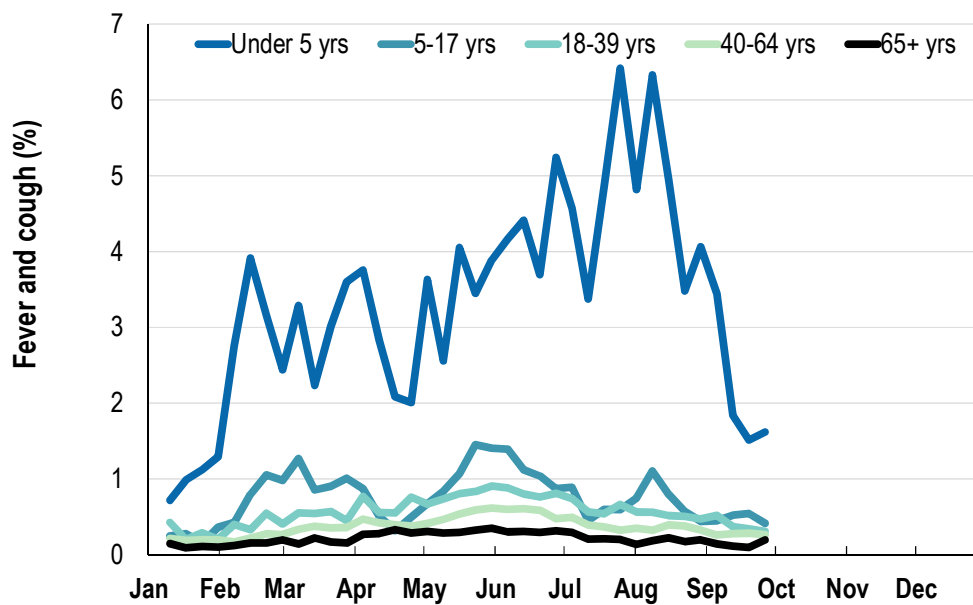
<b>Influenza-like illness severity:</b> <i>46.7% of participants with fever and cough sought medical advice this week</i>		
<b>Influenza-like illness Severity</b>	<b>Week ending 26 September 2021 number (%)</b>	<b>Week ending 19 September 2021 number (%)</b>
<b>Number of participants</b>	64453 (100%)	65396 (100%)
Fever & cough	182 (0.3%)	183 (0.3%)
Fever, cough & time-off normal duties	105 (0.2%)	125 (0.2%)
Fever, cough & 3 or more days off work/normal duties	105 (0.2%)	125 (0.2%)
<b>Number of participants with fever and cough</b>	182 (100%)	183 (100%)
*Sought medical advice for fever and cough	85 (46.7%)	101 (55.2%)
Admitted to hospital	3 (1.6%)	3 (1.6%)
Tested for influenza	24 (13.2%)	22 (12%)
Tested, result positive for influenza	1 (0.5%)	3 (1.6%)
Tested for coronavirus (COVID-19)	76 (41.8%)	88 (48.1%)
Tested, result positive for coronavirus (COVID-19)	1 (0.5%)	1 (0.5%)

\*Includes those who sought medical advice from a general practitioner, COVID-19 clinic, emergency department, or were admitted to hospital for fever & cough

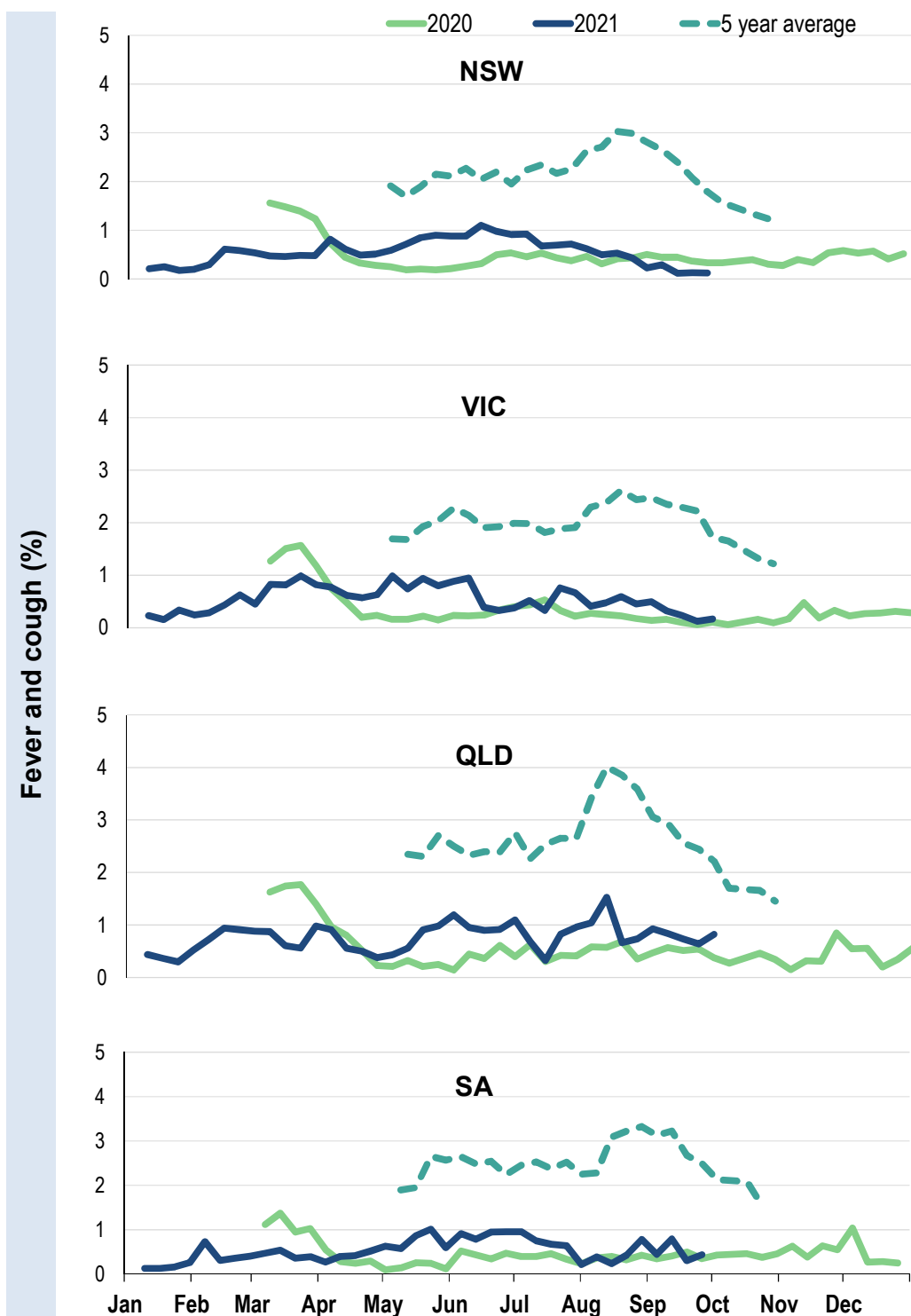
**Fever, cough and absence from work or normal duties (Australia):**



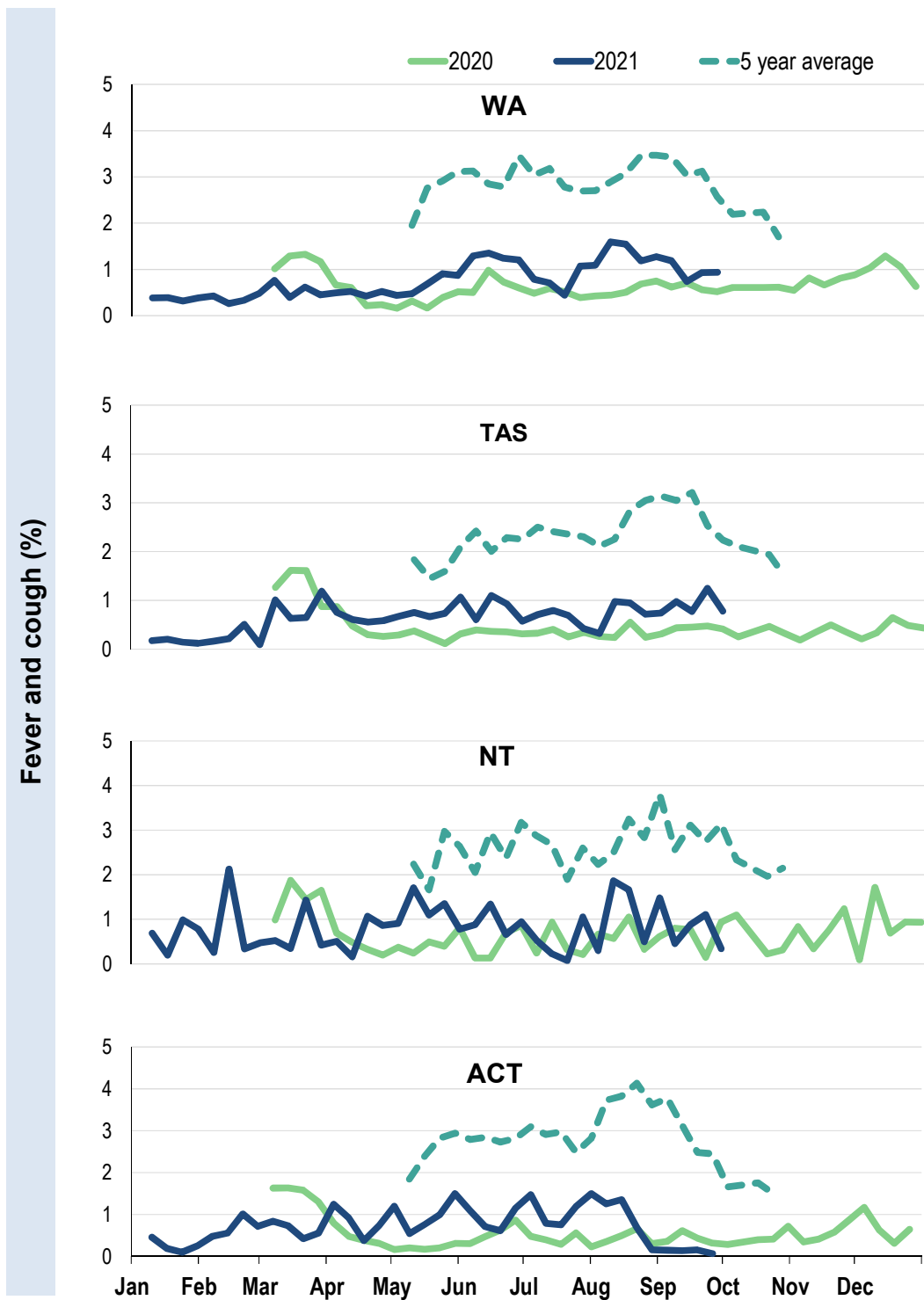
**Influenza-like illness activity by age group (Australia):**



**Influenza-like illness activity by state/territory (age standardised):**



**Influenza-like illness activity by state/territory (age standardised):**

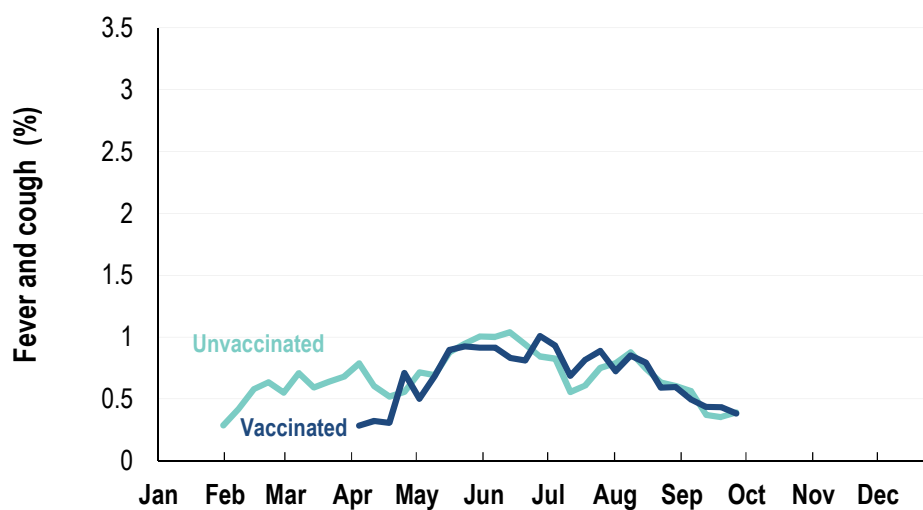


**Participation:**
**64,453 participants (65,396 last week)**

State	Participants	% Rate/100,000 population
NSW	22902	35.5% <b>290.1</b>
VIC	13042	20.2% <b>205.1</b>
QLD	7847	12.2% <b>158.6</b>
SA	5552	8.6% <b>321.5</b>
WA	6136	9.5% <b>237.2</b>
TAS	4146	6.4% <b>794.3</b>
NT	1046	1.6% <b>425.0</b>
ACT	3782	5.9% <b>916.6</b>
AUS	64453	100.0% <b>260.9</b>

**Vaccination rates:**

	COVID-19 vaccine		Influenza (%)
	At least 1 dose (%)	2 doses (%)	
<b>Vaccinated participants:</b>			
<5 years			57.7
5-17 years	28.1	6.6	38.0
18-64 years	95.1	83.7	72.4
65+ years	98.0	91.9	90.7
Working with patients	97.8	93.9	85.9
Aboriginal and/or Torres Strait Islander	77.0	65.8	65.7
<b>Vaccinated overall (%)</b>	<b>89.1</b>	<b>78.8</b>	<b>75.3</b>



\* Data are age standardised in this chart

^ 2021 Influenza vaccination data not available until 04/04/21 due to low counts

