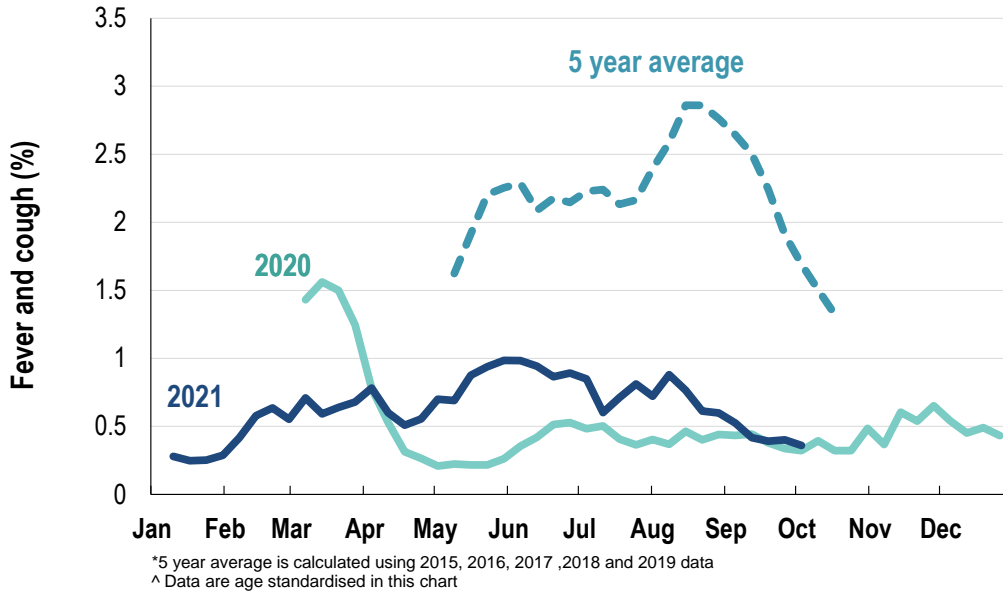


This week influenza-like illness activity is low
63,974 participants this week

Influenza-like illness activity*:

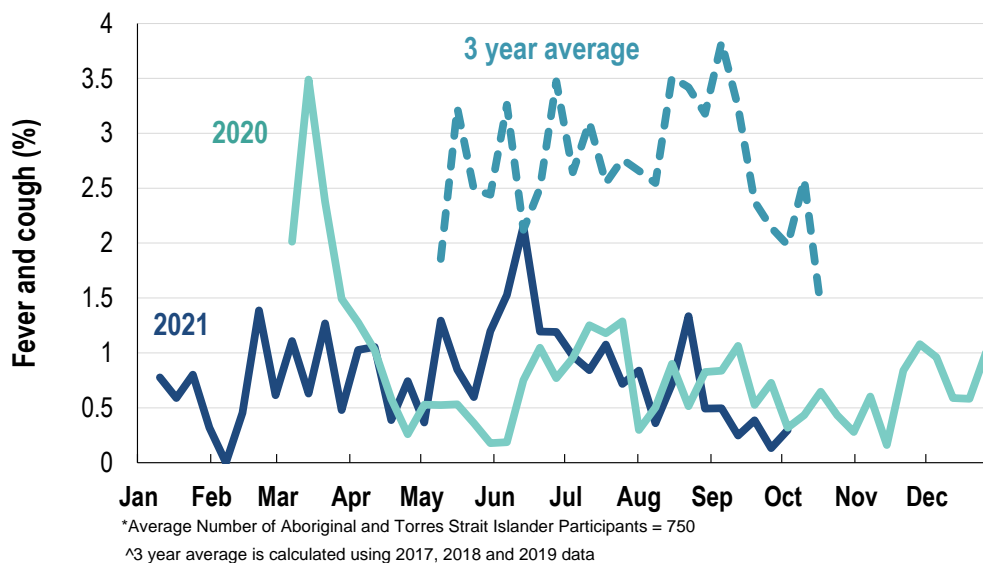
*Influenza-like illness activity is defined as fever & cough for this report

0.4% this week: flu-like illness activity is low



Influenza-like illness activity among Aboriginal and Torres Strait Islander participants

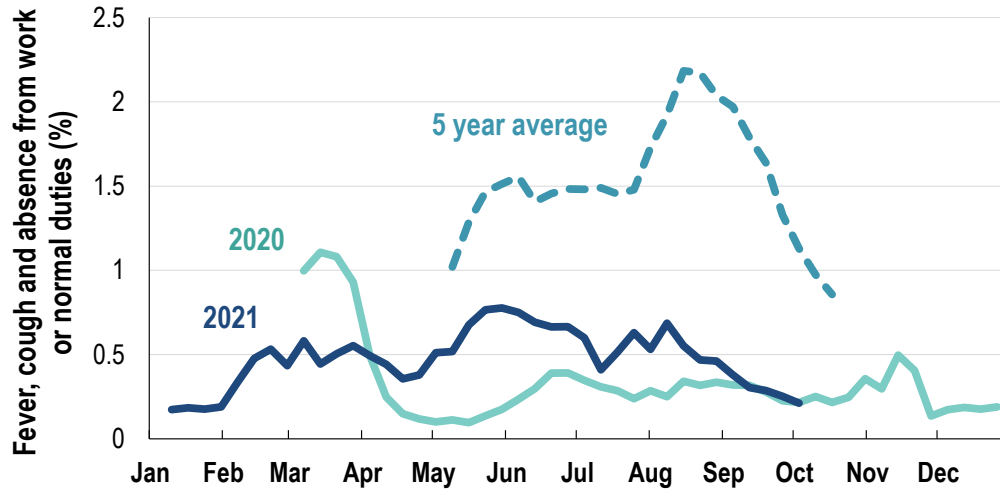
0.3% this week: flu-like illness activity is low



Influenza-like illness severity: <i>57.6% of participants with fever and cough sought medical advice this week</i>		
Influenza-like illness Severity	Week ending 03 October 2021 number (%)	Week ending 26 September 2021 number (%)
Number of participants	63974 (100%)	64453 (100%)
Fever & cough	172 (0.3%)	182 (0.3%)
Fever, cough & time-off normal duties	101 (0.2%)	110 (0.2%)
Fever, cough & 3 or more days off work/normal duties	101 (0.2%)	110 (0.2%)
Number of participants with fever and cough	172 (100%)	182 (100%)
*Sought medical advice for fever and cough	99 (57.6%)	88 (48.4%)
Admitted to hospital	3 (1.7%)	5 (2.7%)
Tested for influenza	15 (8.7%)	28 (15.4%)
Tested, result positive for influenza	1 (0.6%)	1 (0.5%)
Tested for coronavirus (COVID-19)	83 (48.3%)	83 (45.6%)
Tested, result positive for coronavirus (COVID-19)	3 (1.7%)	2 (1.1%)

*Includes those who sought medical advice from a general practitioner, COVID-19 clinic, emergency department, or were admitted to hospital for fever & cough

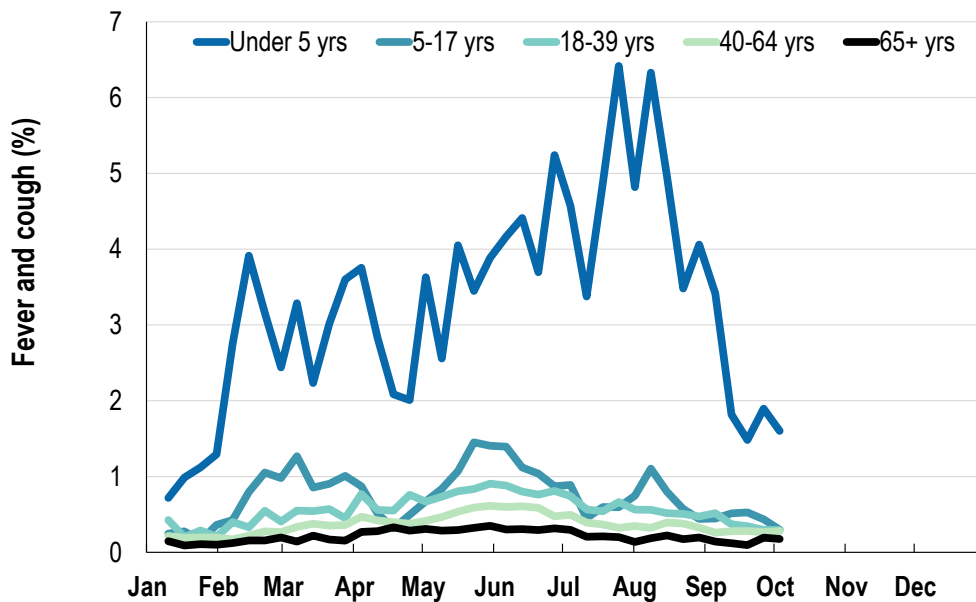
Fever, cough and absence from work or normal duties (Australia):

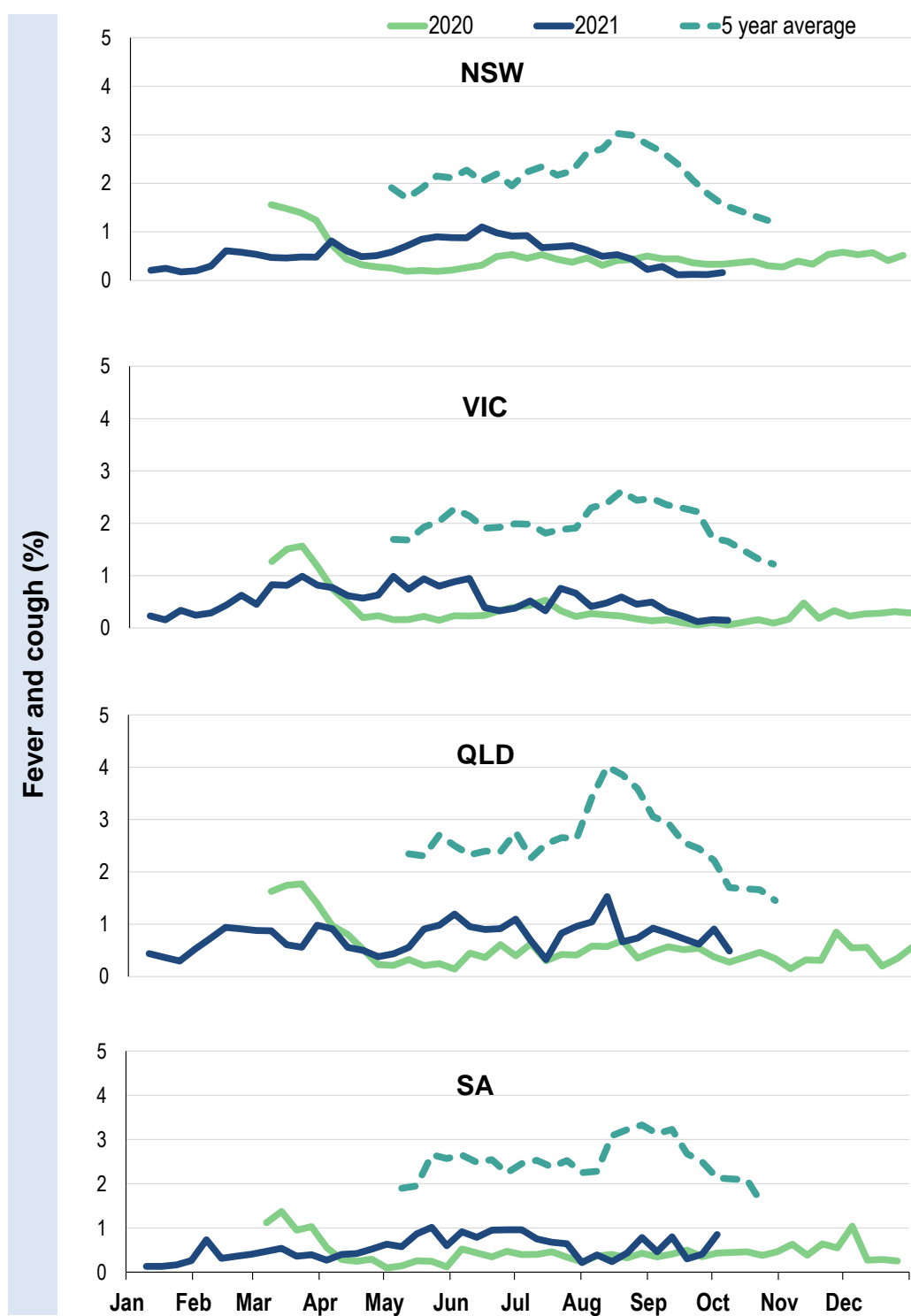


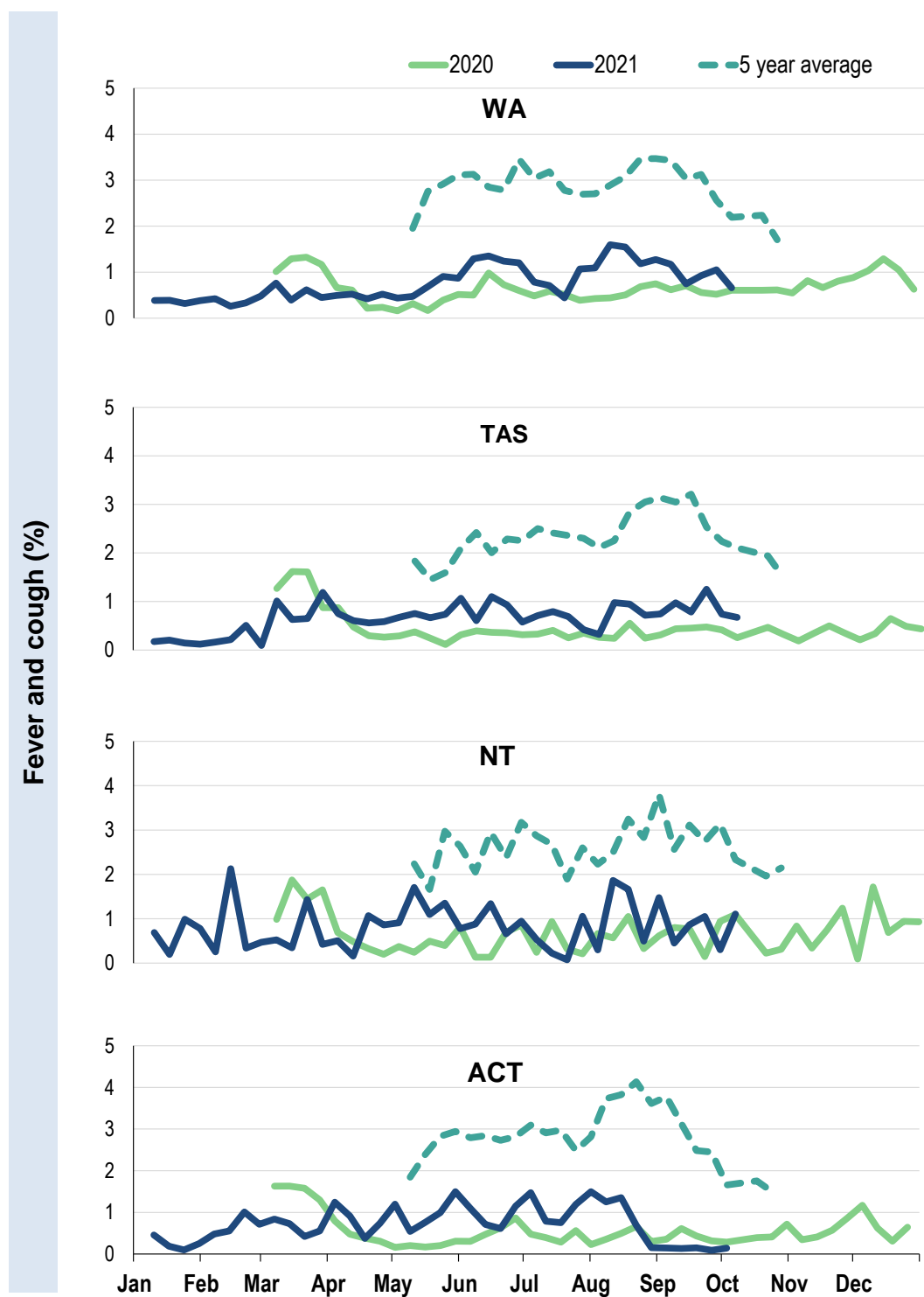
* 5 year average is calculated using 2015, 2016, 2017, 2018 and 2019 data

^ Data are age standardised in this chart

Influenza-like illness activity by age group (Australia):





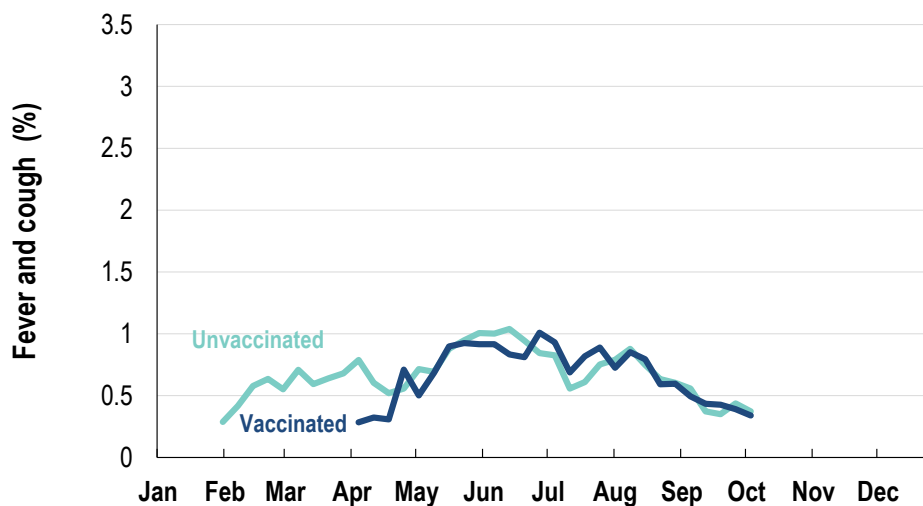


Participation:
63,974 participants (64,453 last week)

State	Participants	%	Rate/100,000 population
NSW	22612	35.3%	286.4
VIC	13125	20.5%	206.4
QLD	7858	12.3%	158.8
SA	5347	8.4%	309.6
WA	6235	9.7%	241.0
TAS	4065	6.4%	778.7
NT	1018	1.6%	413.7
ACT	3714	5.8%	900.1
AUS	63974	100.0%	259.0

Vaccination rates:
Vaccinated participants:

	COVID-19 vaccine		Influenza (%)
	At least 1 dose (%)	2 doses (%)	
<5 years			57.4
5-17 years	35.9	9.5	38.7
18-64 years	96.2	86.9	72.5
65+ years	98.3	93.1	90.8
Working with patients	98.1	95.0	86.3
Aboriginal and/or Torres Strait Islander	78.5	69.1	66.5
Vaccinated overall (%)	90.4	81.2	75.4



* Data are age standardised in this chart

^ 2021 Influenza vaccination data not available until 04/04/21 due to low counts

