

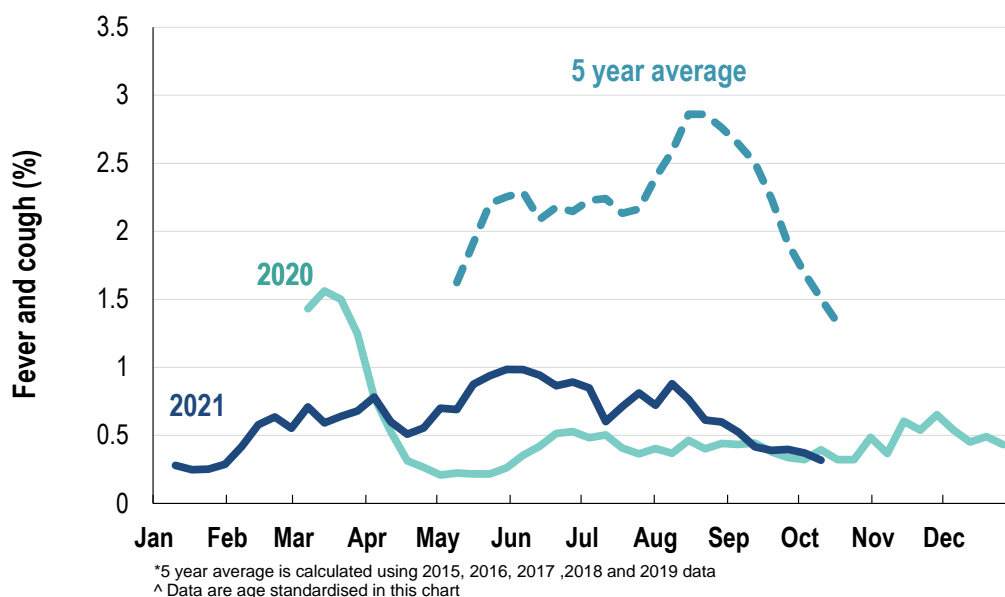
This week influenza-like illness activity is low

64,801 participants this week

Influenza-like illness activity*:

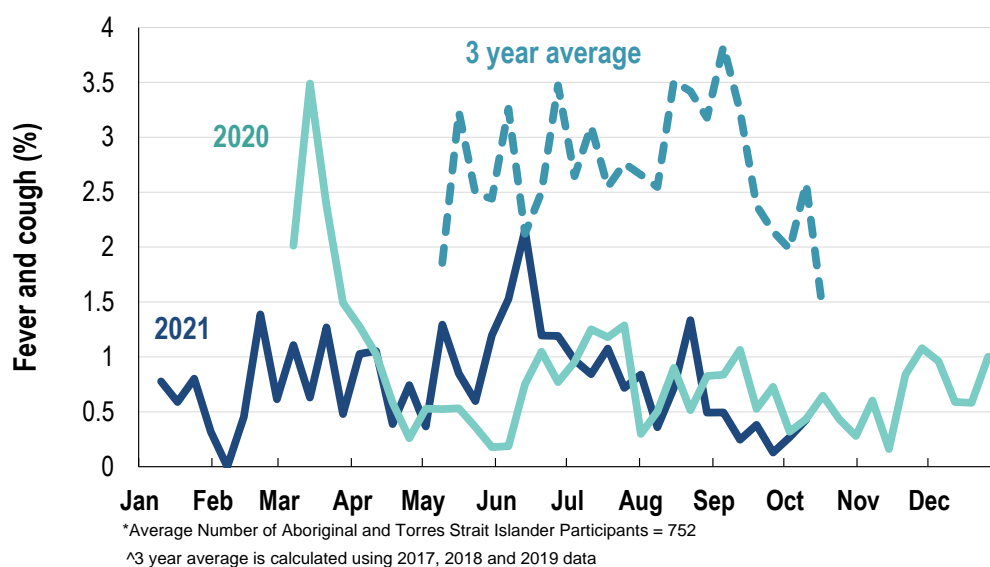
*Influenza-like illness activity is defined as fever & cough for this report

0.3% this week: flu-like illness activity is low



Influenza-like illness activity among Aboriginal and Torres Strait Islander participants

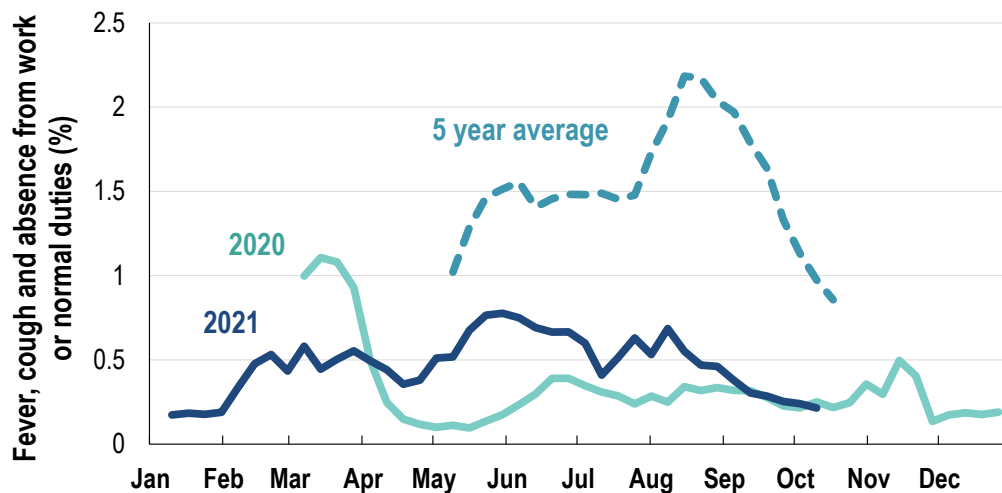
0.4% this week: flu-like illness activity is low



| Influenza-like illness severity: <i>50% of participants with fever and cough sought medical advice this week</i> | | |
|--|---|---|
| Influenza-like illness Severity | Week ending 10 October 2021 number (%) | Week ending 03 October 2021 number (%) |
| Number of participants | 64801 (100%) | 63974 (100%) |
| Fever & cough | 144 (0.2%) | 172 (0.3%) |
| Fever, cough & time-off normal duties | 96 (0.1%) | 109 (0.2%) |
| Fever, cough & 3 or more days off work/normal duties | 96 (0.1%) | 109 (0.2%) |
| Number of participants with fever and cough | 144 (100%) | 172 (100%) |
| *Sought medical advice for fever and cough | 72 (50%) | 105 (61%) |
| Admitted to hospital | 6 (4.2%) | 4 (2.3%) |
| Tested for influenza | 18 (12.5%) | 17 (9.9%) |
| Tested, result positive for influenza | 0 (0%) | 1 (0.6%) |
| Tested for coronavirus (COVID-19) | 68 (47.2%) | 93 (54.1%) |
| Tested, result positive for coronavirus (COVID-19) | 1 (0.7%) | 3 (1.7%) |

*Includes those who sought medical advice from a general practitioner, COVID-19 clinic, emergency department, or were admitted to hospital for fever & cough

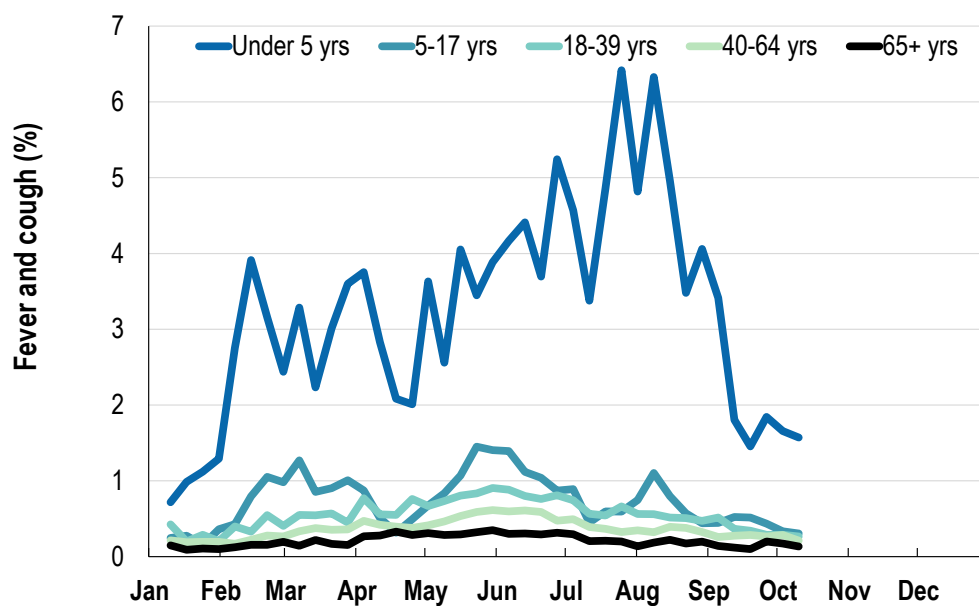
Fever, cough and absence from work or normal duties (Australia):

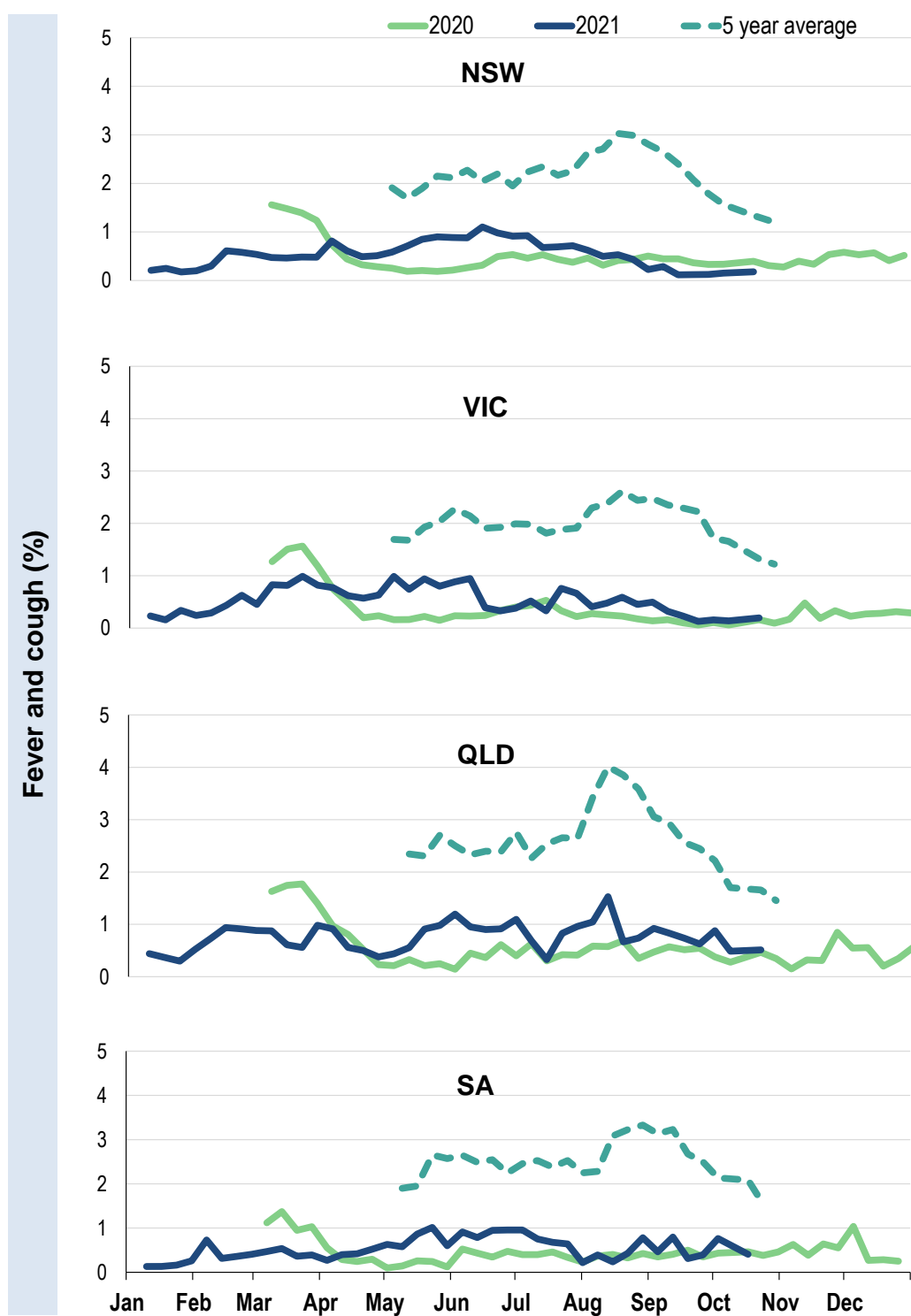


* 5 year average is calculated using 2015, 2016, 2017, 2018 and 2019 data

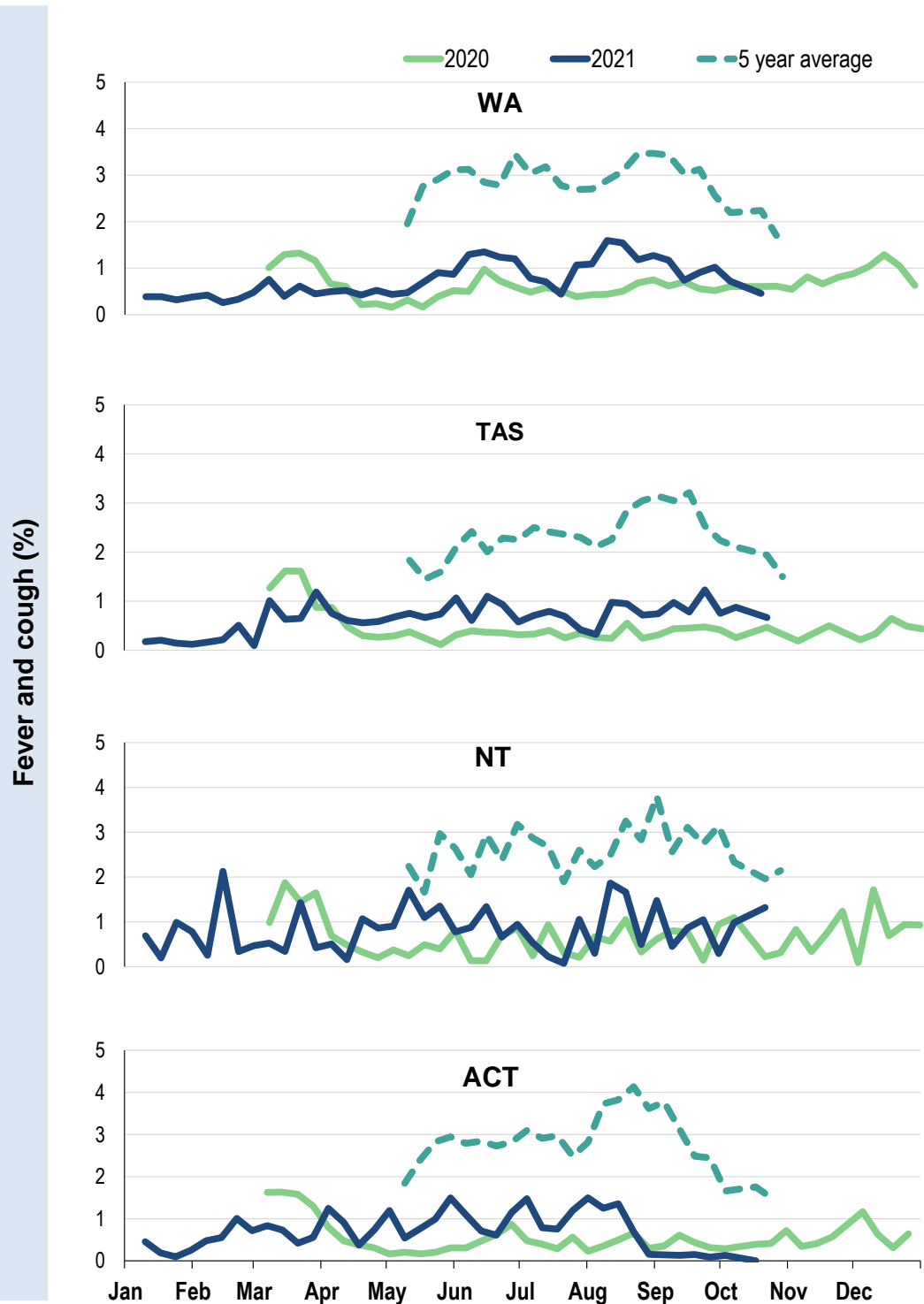
^ Data are age standardised in this chart

Influenza-like illness activity by age group (Australia):





Influenza-like illness activity by state/territory (age standardised):

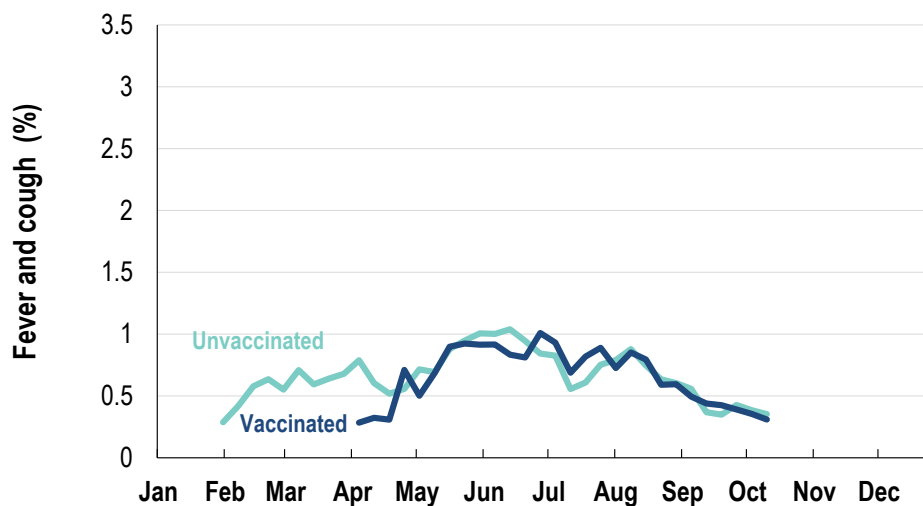


Participation:
64,801 participants (63,974 last week)

| State | Participants | % | Rate/100,000 population |
|-------|--------------|--------|-------------------------|
| NSW | 22870 | 35.3% | 289.6 |
| VIC | 13018 | 20.1% | 204.7 |
| QLD | 7909 | 12.2% | 159.8 |
| SA | 5608 | 8.7% | 324.7 |
| WA | 6431 | 9.9% | 248.6 |
| TAS | 4169 | 6.4% | 798.7 |
| NT | 1050 | 1.6% | 426.7 |
| ACT | 3746 | 5.8% | 907.9 |
| AUS | 64801 | 100.0% | 262.3 |

Vaccination rates:
Vaccinated participants:

| | COVID-19 vaccine | | Influenza (%) |
|--|---------------------|----------------------|---------------|
| | At least 1 dose (%) | At least 2 doses (%) | |
| <5 years | | | 56.6 |
| 5-17 years | 40.4 | 15.9 | 39.0 |
| 18-64 years | 96.8 | 89.7 | 72.5 |
| 65+ years | 98.6 | 94.3 | 90.7 |
| Working with patients | 98.6 | 95.8 | 86.4 |
| Aboriginal and/or Torres Strait Islander | 79.6 | 70.9 | 66.3 |
| Vaccinated overall (%) | 91.1 | 83.5 | 75.3 |



* Data are age standardised in this chart

^ 2021 Influenza vaccination data not available until 04/04/21 due to low counts

