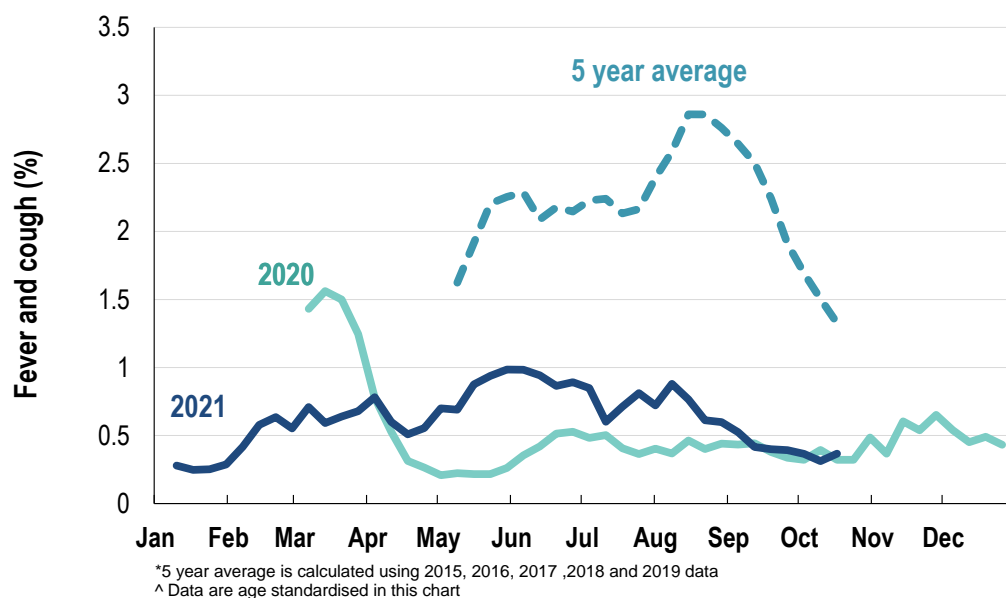


This week influenza-like illness activity is low 62,181 participants this week

Influenza-like illness activity*:

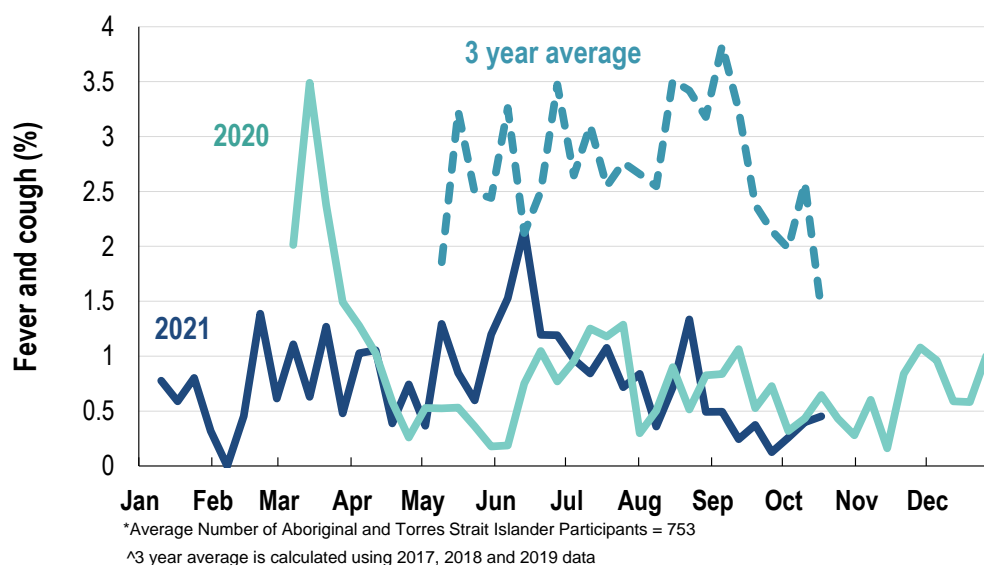
*Influenza-like illness activity is defined as fever & cough for this report

0.4% this week: flu-like illness activity is low



Influenza-like illness activity among Aboriginal and Torres Strait Islander participants

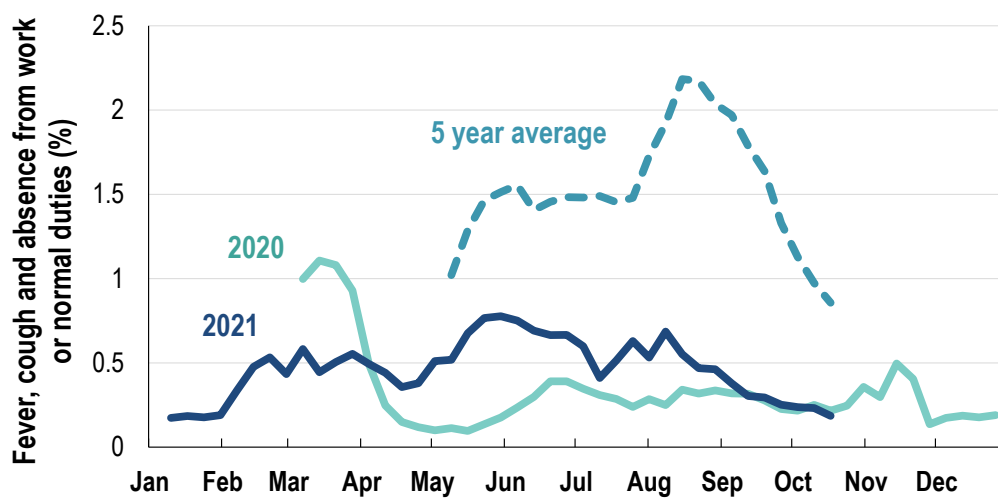
0.5% this week: flu-like illness activity is low



Influenza-like illness severity: <i>56.6% of participants with fever and cough sought medical advice this week</i>		
Influenza-like illness Severity	Week ending 17 October 2021 number (%)	Week ending 10 October 2021 number (%)
Number of participants	62181 (100%)	64802 (100%)
Fever & cough	145 (0.2%)	144 (0.2%)
Fever, cough & time-off normal duties	81 (0.1%)	102 (0.2%)
Fever, cough & 3 or more days off work/normal duties	81 (0.1%)	102 (0.2%)
Number of participants with fever and cough	145 (100%)	144 (100%)
*Sought medical advice for fever and cough	82 (56.6%)	78 (54.2%)
Admitted to hospital	6 (4.1%)	7 (4.9%)
Tested for influenza	17 (11.7%)	20 (13.9%)
Tested, result positive for influenza	0 (0%)	0 (0%)
Tested for coronavirus (COVID-19)	76 (52.4%)	73 (50.7%)
Tested, result positive for coronavirus (COVID-19)	6 (4.1%)	1 (0.7%)

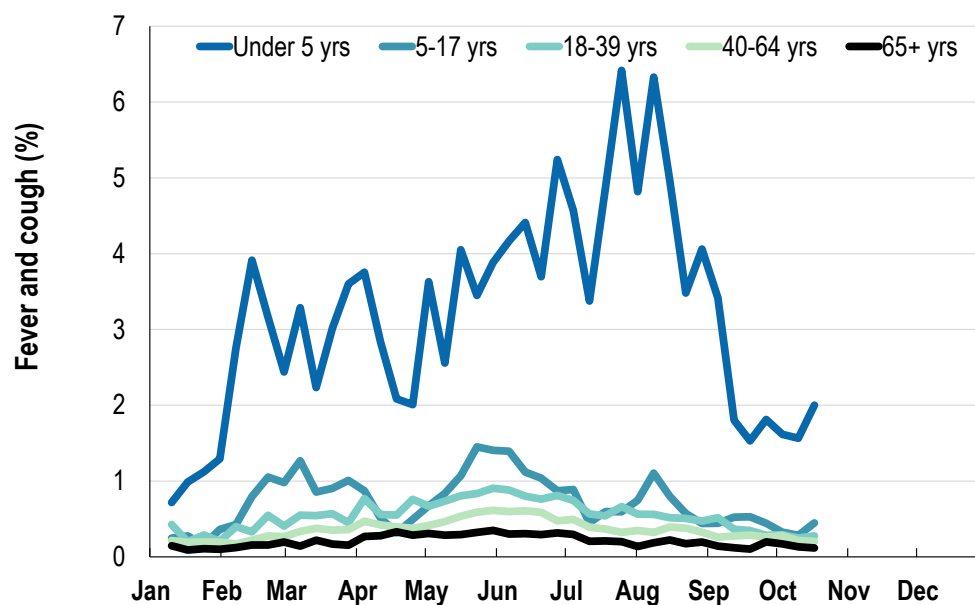
*Includes those who sought medical advice from a general practitioner, COVID-19 clinic, emergency department, or were admitted to hospital for fever & cough

Influenza-like illness and absence from work or normal duties (Australia):

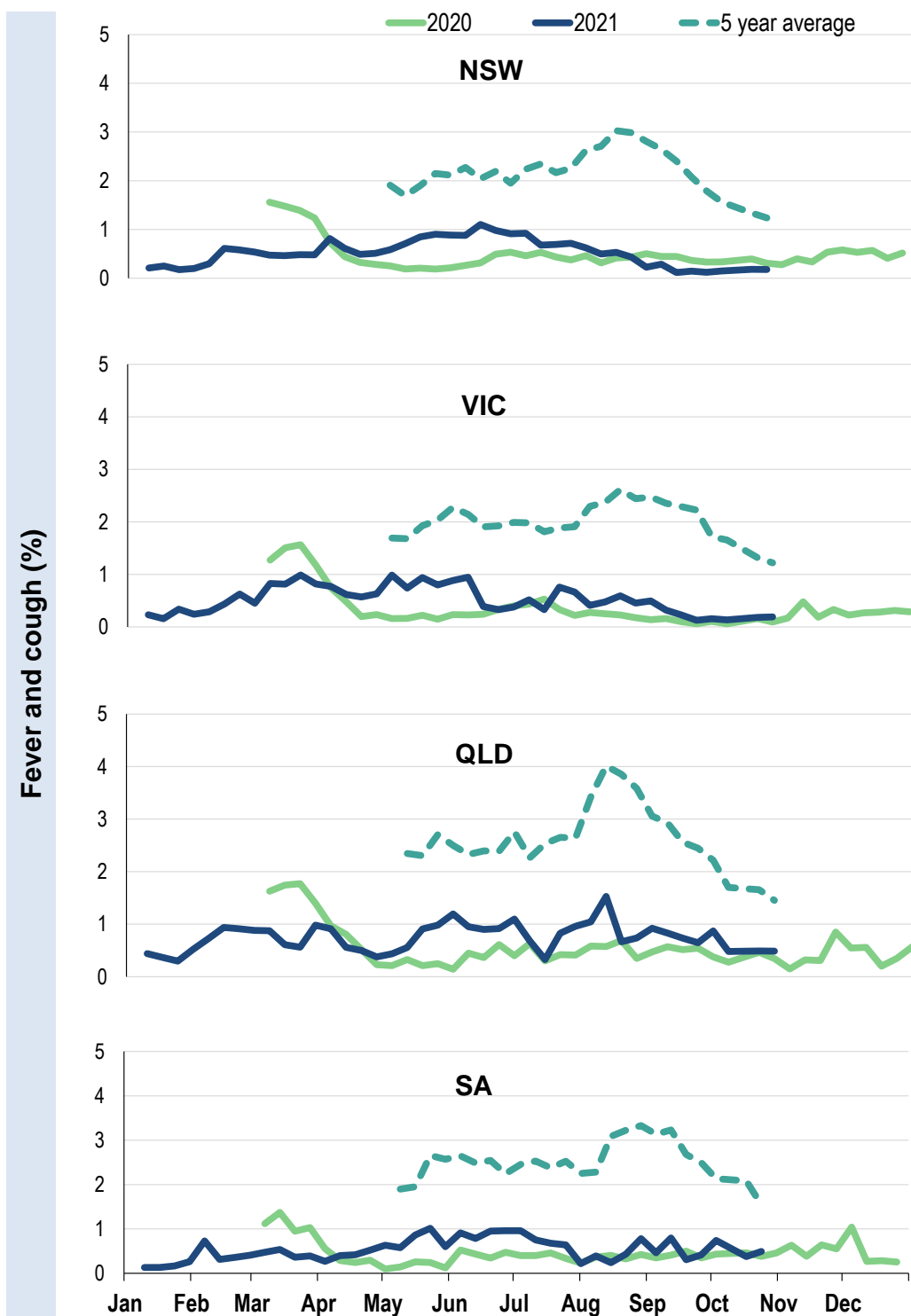


* 5 year average is calculated using 2015, 2016, 2017, 2018 and 2019 data
^ Data are age standardised in this chart

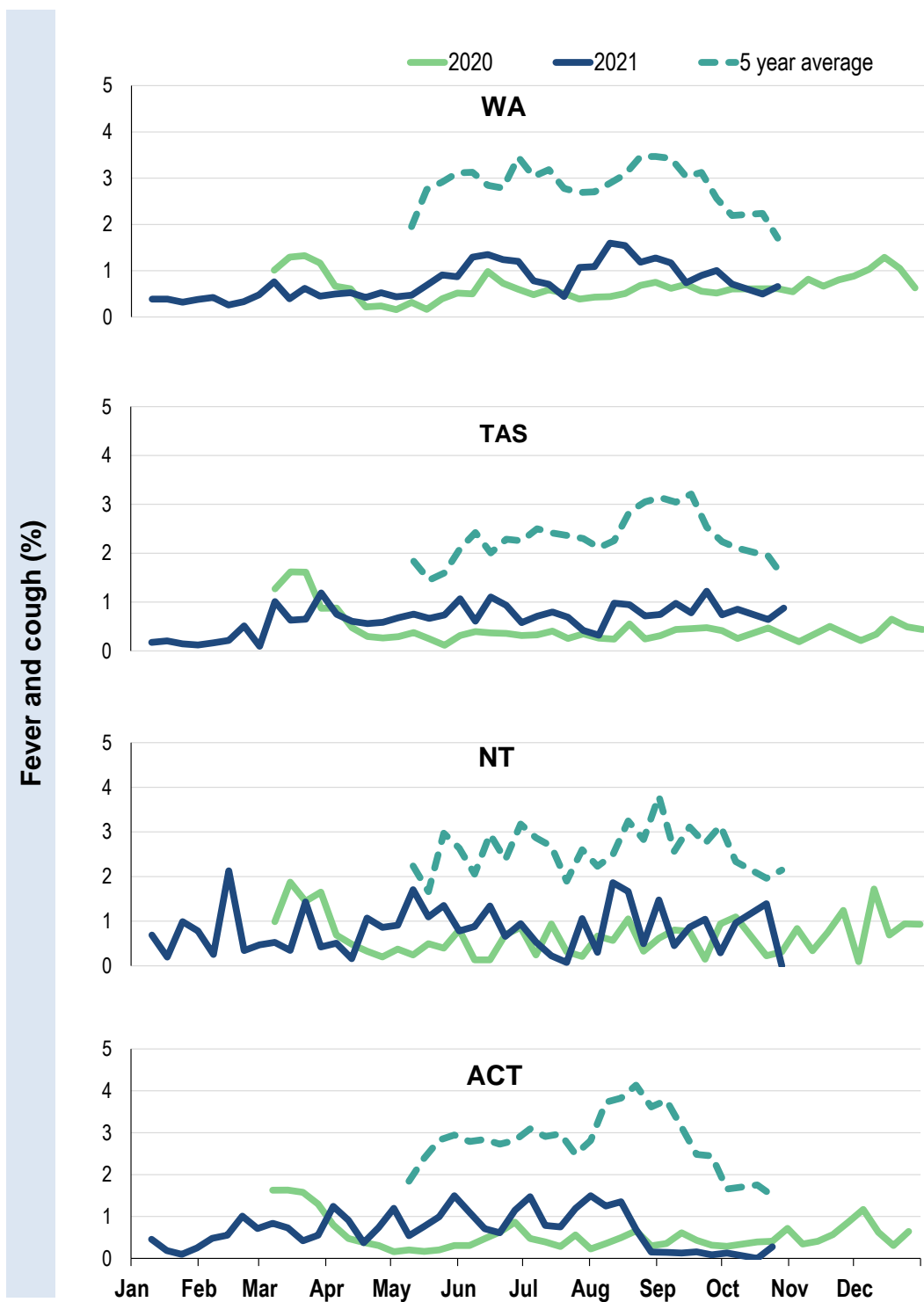
Influenza-like illness activity by age group (Australia):



Influenza-like illness activity by state/territory (age standardised):



Influenza-like illness activity by state/territory (age standardised):

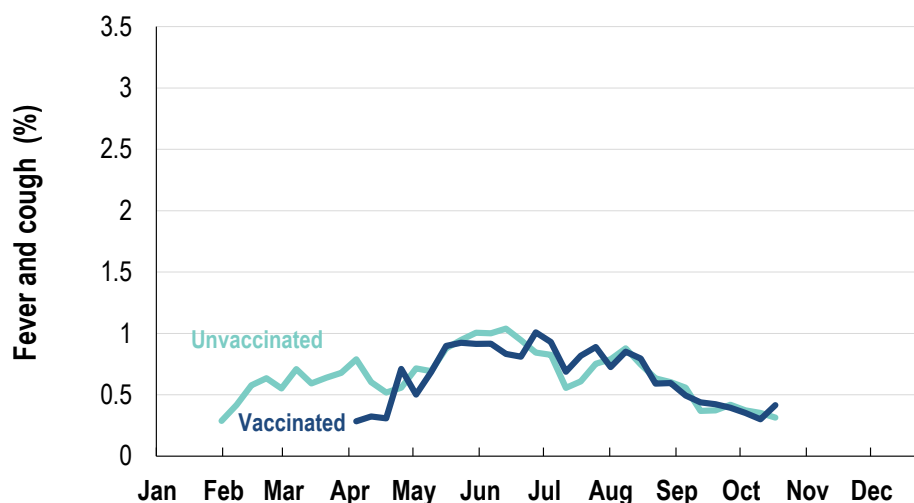


Participation:
62,181 participants (64,802 last week)

State	Participants	% Rate/100,000 population
NSW	22048	35.5% 279.2
VIC	12687	20.4% 199.5
QLD	7591	12.2% 153.4
SA	5386	8.7% 311.9
WA	6185	9.9% 239.1
TAS	4104	6.6% 786.2
NT	590	0.9% 239.7
ACT	3590	5.8% 870.1
AUS	62181	100.0% 251.7

Vaccination rates:

	COVID-19 vaccine		Influenza (%)
	At least 1 dose (%)	At least 2 doses (%)	
Vaccinated participants:			
<5 years			57.1
5-17 years	44.3	24.7	39.3
18-64 years	97.4	92.2	72.6
65+ years	98.8	95.3	90.7
Working with patients	98.7	96.4	86.3
Aboriginal and/or Torres Strait Islander	80.6	73.0	67.6
Vaccinated overall (%)	91.9	86.0	75.4

Influenza-like illness activity by influenza vaccination status (Australia):


* Data in this chart are age standardised.

^ 2021 Influenza vaccination data not available until 04/04/21 due to low counts

