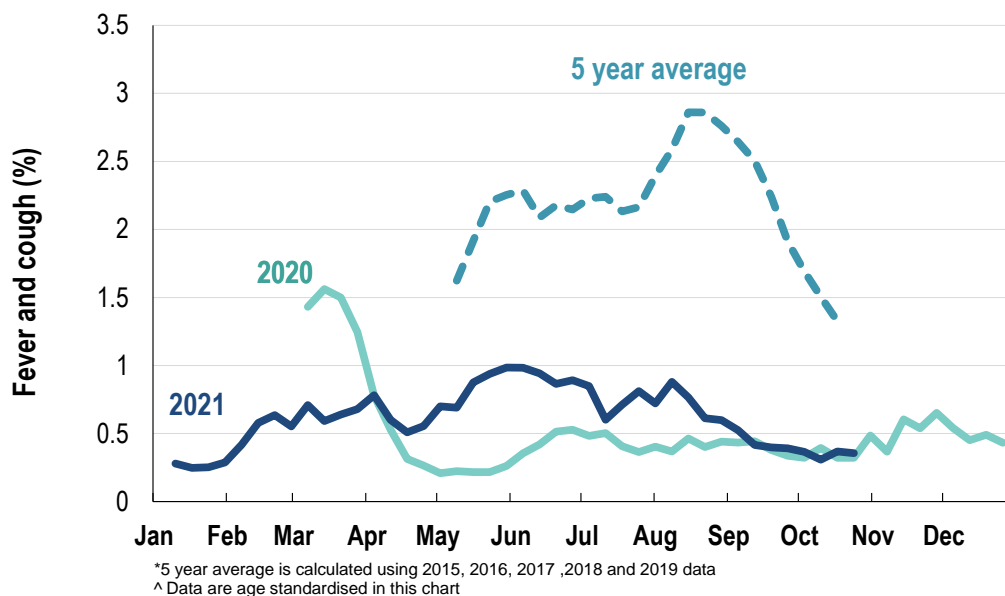


This week influenza-like illness activity is low 62,407 participants this week

Influenza-like illness activity*:

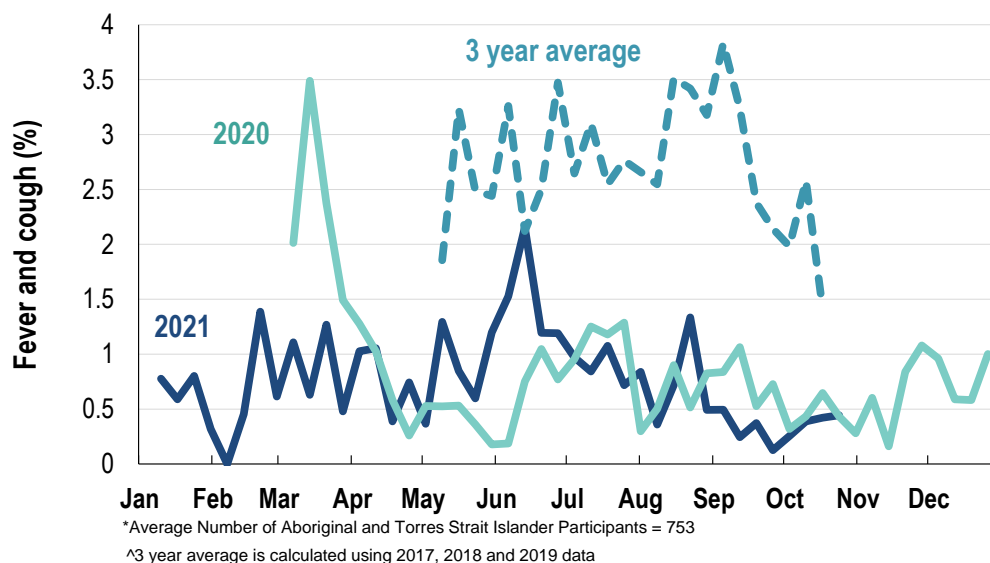
*Influenza-like illness activity is defined as fever & cough for this report

0.4% this week: flu-like illness activity is low



Influenza-like illness activity among Aboriginal and Torres Strait Islander participants

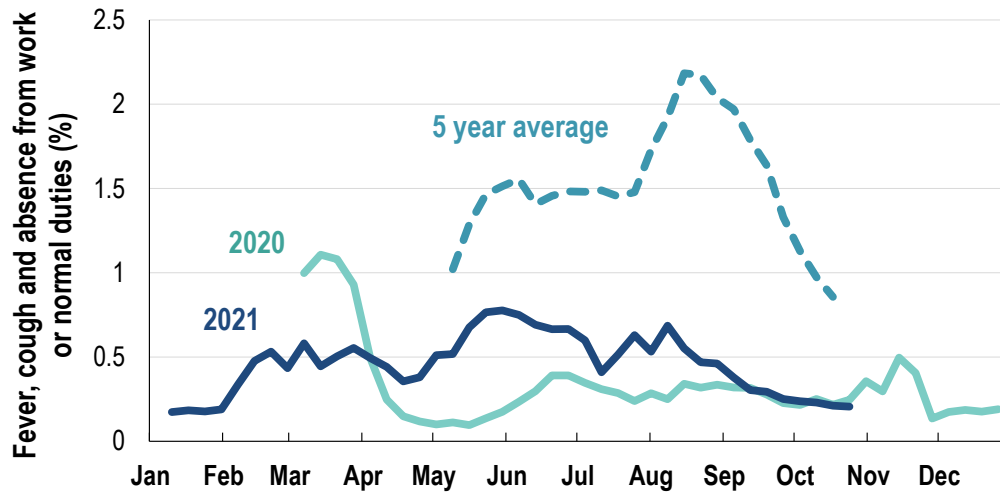
0.4% this week: flu-like illness activity is low



Influenza-like illness severity: <i>58.2% of participants with fever and cough sought medical advice this week</i>		
Influenza-like illness Severity	Week ending 24 October 2021 number (%)	Week ending 17 October 2021 number (%)
Number of participants	62407 (100%)	62181 (100%)
Fever & cough	134 (0.2%)	145 (0.2%)
Fever, cough & time-off normal duties	79 (0.1%)	87 (0.1%)
Fever, cough & 3 or more days off work/normal duties	79 (0.1%)	87 (0.1%)
Number of participants with fever and cough	134 (100%)	145 (100%)
*Sought medical advice for fever and cough	78 (58.2%)	85 (58.6%)
Admitted to hospital	0 (0%)	7 (4.8%)
Tested for influenza	12 (9%)	18 (12.4%)
Tested, result positive for influenza	1 (0.7%)	0 (0%)
Tested for coronavirus (COVID-19)	66 (49.3%)	80 (55.2%)
Tested, result positive for coronavirus (COVID-19)	3 (2.2%)	6 (4.1%)

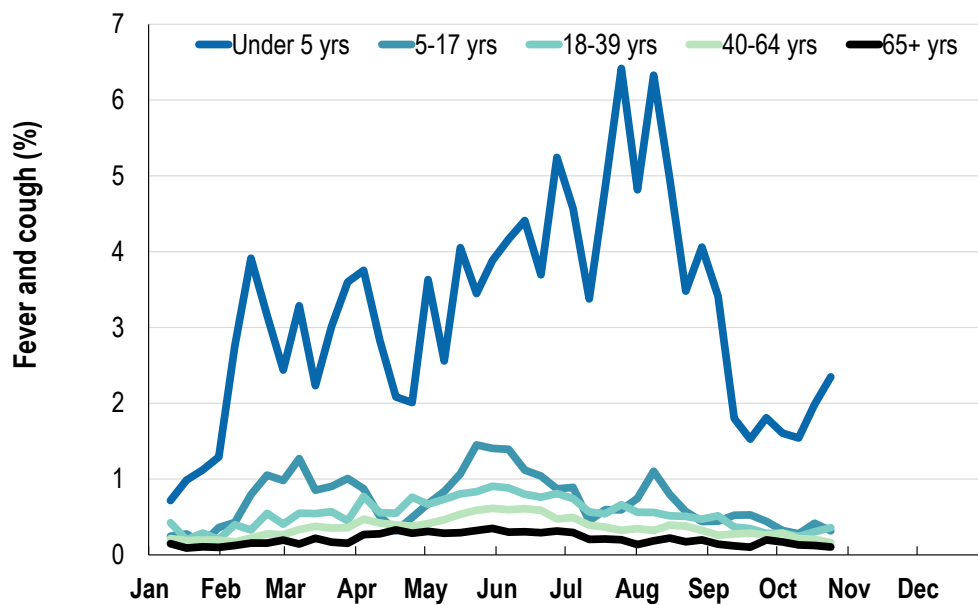
*Includes those who sought medical advice from a general practitioner, COVID-19 clinic, emergency department, or were admitted to hospital for fever & cough

Fever, cough and absence from work or normal duties (Australia):

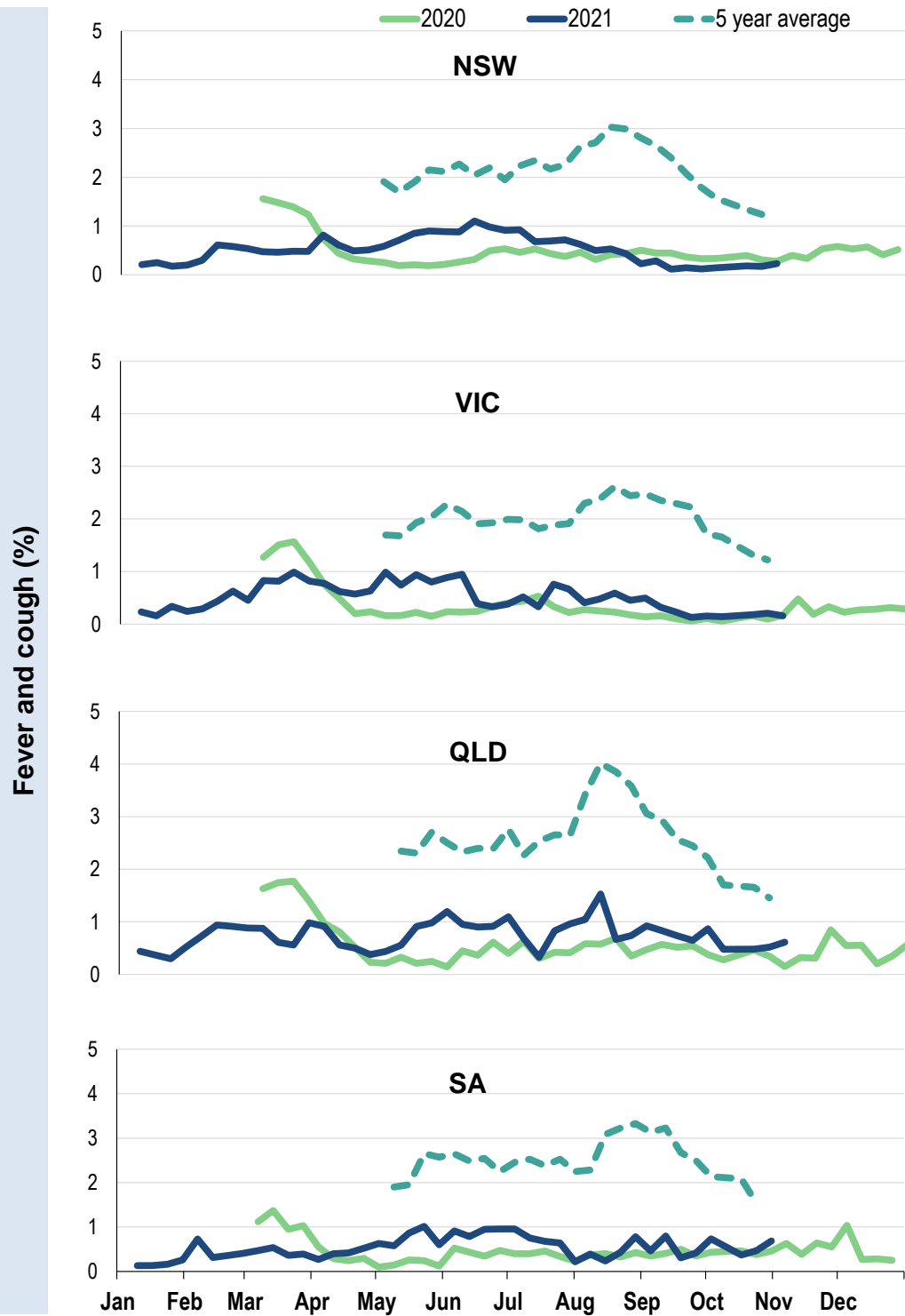


* 5 year average is calculated using 2015, 2016, 2017, 2018 and 2019 data
^ Data are age standardised in this chart

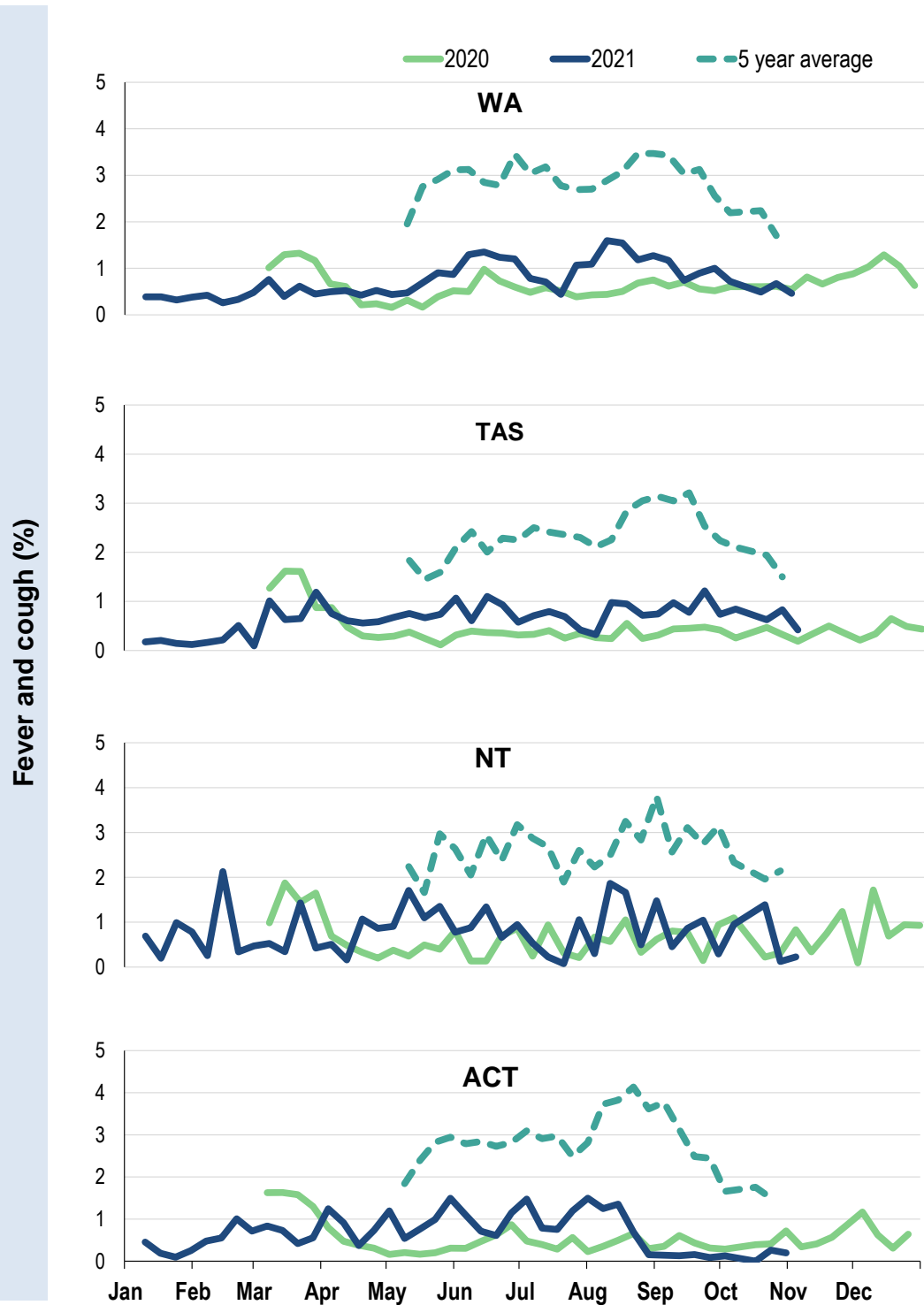
Influenza-like illness activity by age group (Australia):



Influenza-like illness activity by state/territory (age standardised):



Influenza-like illness activity by state/territory (age standardised):

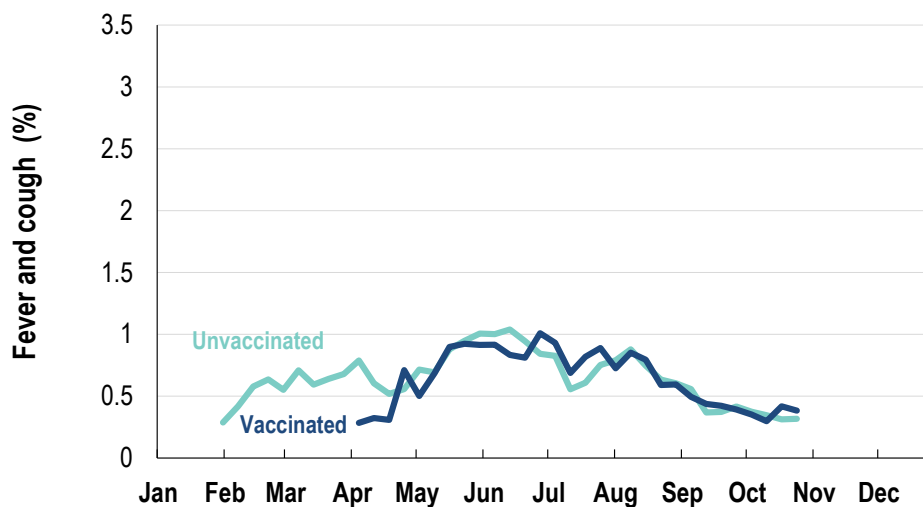


Participation:
62,407 participants (62,181 last week)

State	Participants	% Rate/100,000 population
NSW	21812	35.0% 276.2
VIC	12518	20.1% 196.9
QLD	7565	12.1% 152.9
SA	5461	8.8% 316.2
WA	6264	10.0% 242.1
TAS	4114	6.6% 788.1
NT	1012	1.6% 411.2
ACT	3661	5.9% 887.3
AUS	62407	100.0% 252.6

Vaccination rates:
Vaccinated participants:

	COVID-19 vaccine		Influenza (%)
	At least 1 dose (%)	At least 2 doses (%)	
<5 years			57.5
5-17 years	45.1	32.1	39.0
18-64 years	97.8	94.1	72.8
65+ years	98.9	96.2	90.7
Working with patients	98.9	97.1	86.4
Aboriginal and/or Torres Strait Islander	81.7	75.1	66.6
Vaccinated overall (%)	92.3	88.2	75.5



* Data are age standardised in this chart

^ 2021 Influenza vaccination data not available until 04/04/21 due to low counts

