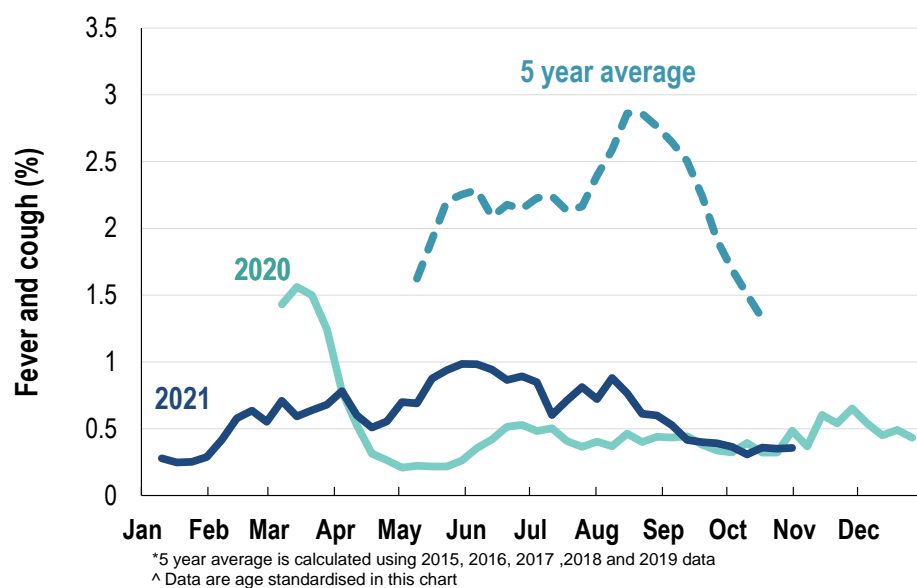


This week influenza-like illness activity is low 51,428 participants this week

Influenza-like illness activity*:

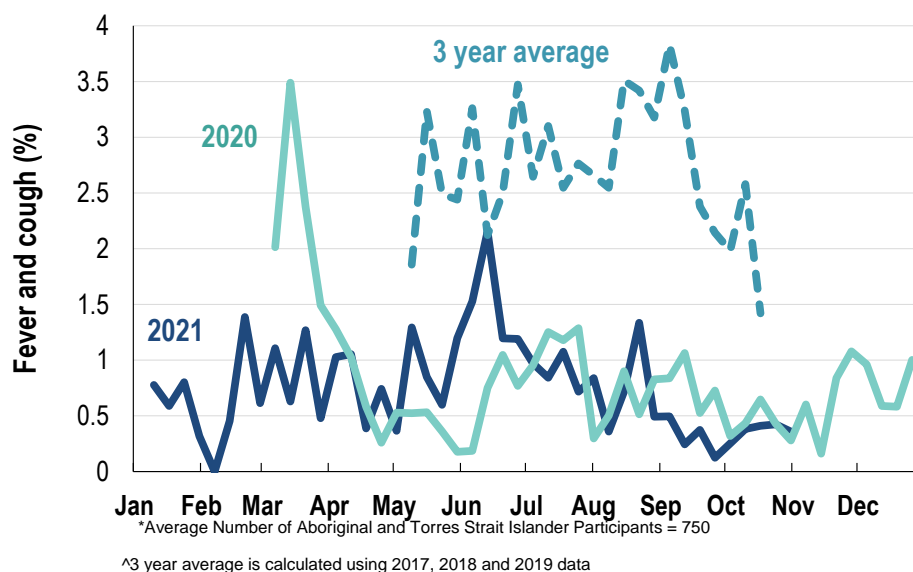
*Influenza-like illness activity is defined as fever & cough for this report

0.4% this week: flu-like illness activity is low



Influenza-like illness activity among Aboriginal and Torres Strait Islander participants

0.4% this week: flu-like illness activity is low

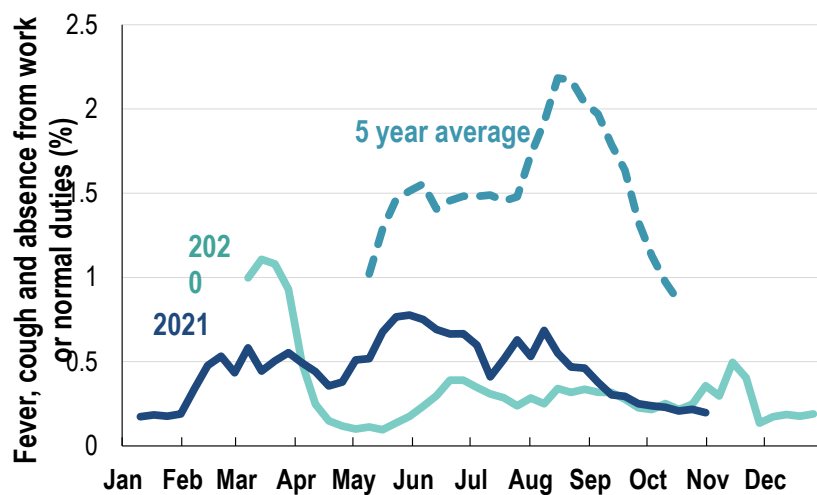


Influenza-like illness severity:
42.5% of participants with fever and cough sought medical advice this week

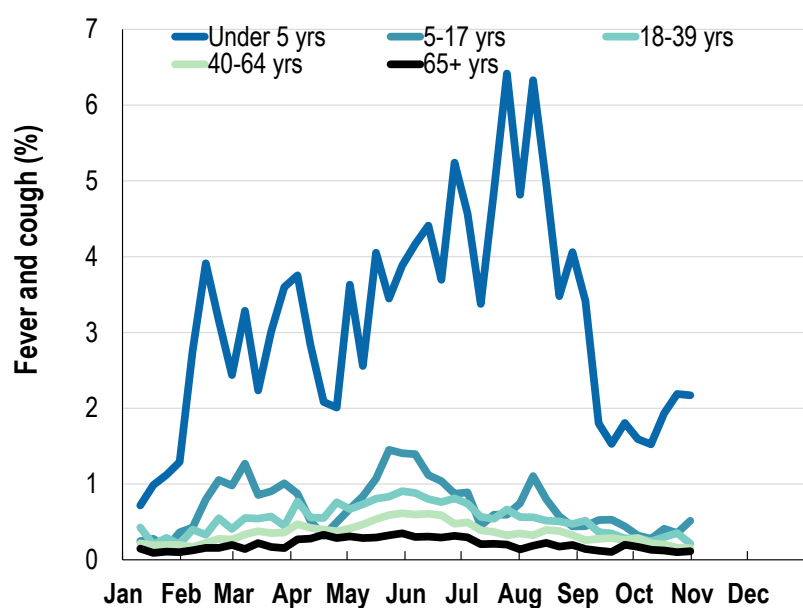
Influenza-like illness Severity	31 October 2021 number (%)	24 October 2021 number (%)
Number of participants	51428 (100%)	62407 (100%)
Fever & cough	106 (0.2%)	134 (0.2%)
Fever, cough & time-off normal duties	56 (0.1%)	84 (0.1%)
Fever, cough & 3 or more days off work/normal duties	56 (0.1%)	84 (0.1%)
Number of participants with fever and cough	106 (100%)	134 (100%)
*Sought medical advice for fever and cough	45 (42.5%)	80 (59.7%)
Admitted to hospital	0 (0%)	1 (0.7%)
Tested for influenza	8 (7.5%)	13 (9.7%)
Tested, result positive for influenza	0 (0%)	1 (0.7%)
Tested for coronavirus (COVID-19)	49 (46.2%)	71 (53%)
Tested, result positive for coronavirus (COVID-19)	0 (0%)	3 (2.2%)

*Includes those who sought medical advice from a general practitioner, COVID-19 clinic, emergency department, or were admitted to hospital for fever & cough

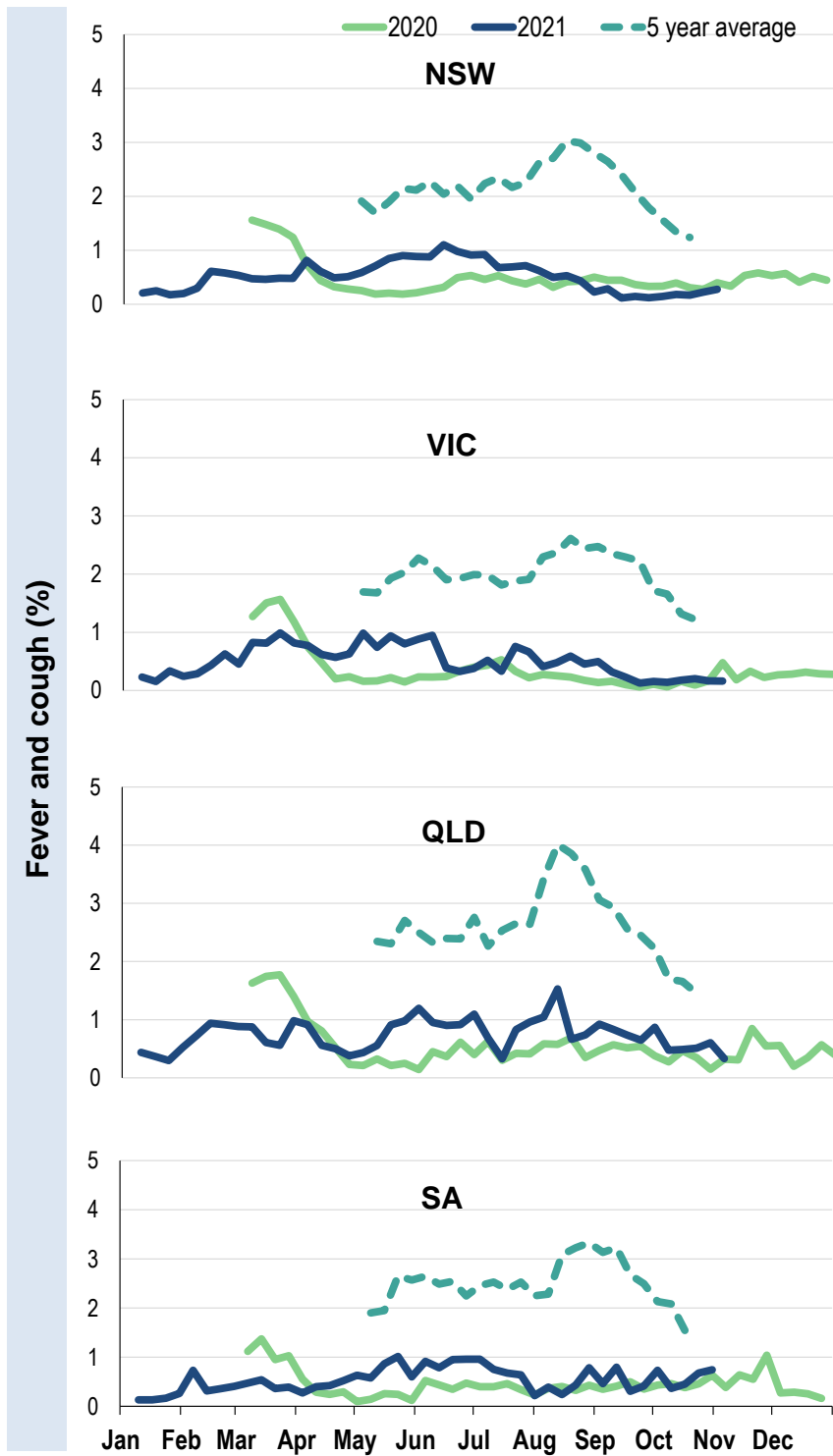
Fever, cough and absence from work or normal duties (Australia):



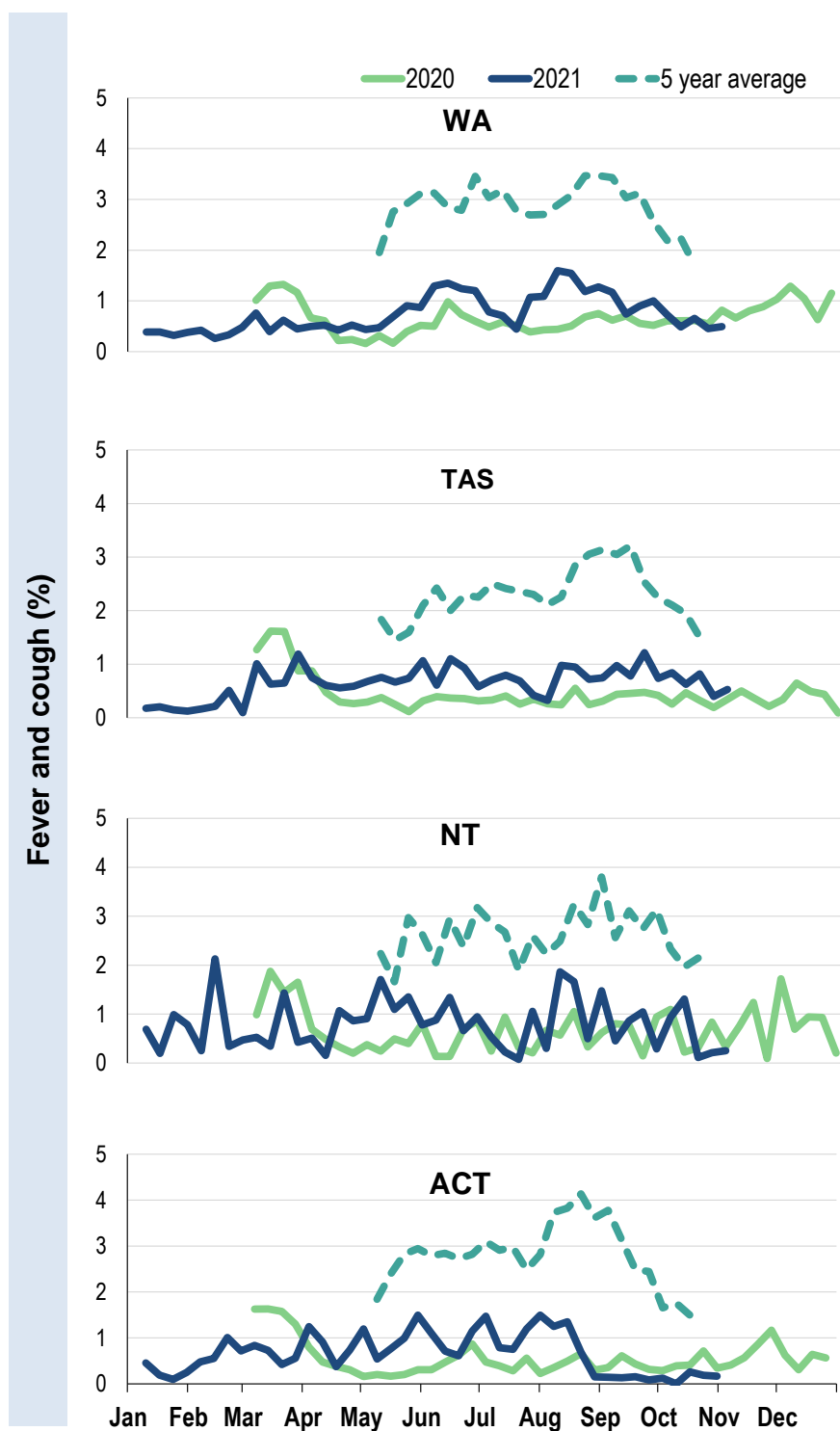
Influenza-like illness activity by age group (Australia):



Influenza-like illness activity by state/territory (age standardised):



Influenza-like illness activity by state/territory (age standardised):

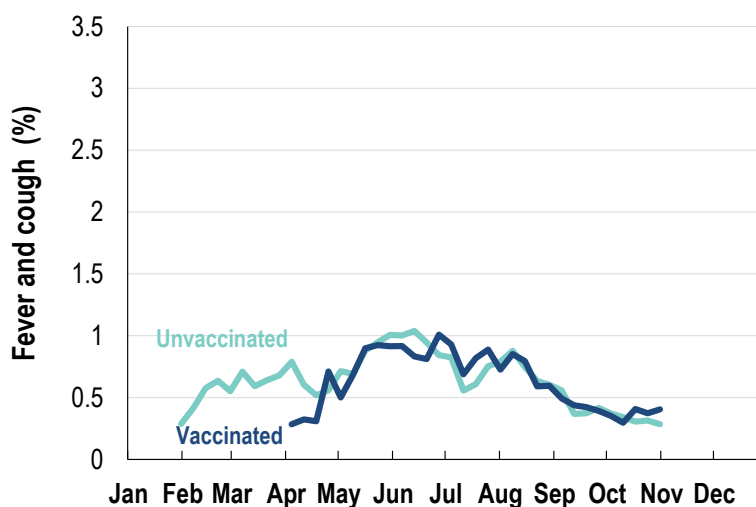


Participation:
51,428 participants (62,407 last week)

State	Participants	%	Rate/100,000 population
NSW	18053	35.1%	228.6
VIC	9953	19.4%	156.5
QLD	6242	12.1%	126.1
SA	4658	9.1%	269.7
WA	5183	10.1%	200.3
TAS	3558	6.9%	681.6
NT	910	1.8%	369.8
ACT	2871	5.6%	695.8
AUS	51428	100.0%	208.2

Vaccination rates:

Vaccinated participants:	COVID-19 vaccine			Influenza (%)
	At least 1 dose (%)	At least 2 doses (%)	3 doses (%)	
<5 years				56.4
5-17 years	47.0	37.4	0.1	38.9
18-64 years	98.0	95.3	1.4	73.1
65+ years	98.9	96.9	2.2	90.9
Working with patients	98.9	97.3	3.0	86.9
Aboriginal and/or Torres Strait Islander	83.3	79.6	1.8	67.0
Vaccinated overall (%)	92.7	89.7	1.5	75.8



* Data are age standardised in this chart

^ 2021 Influenza vaccination data not available until 04/04/21 due to low counts

