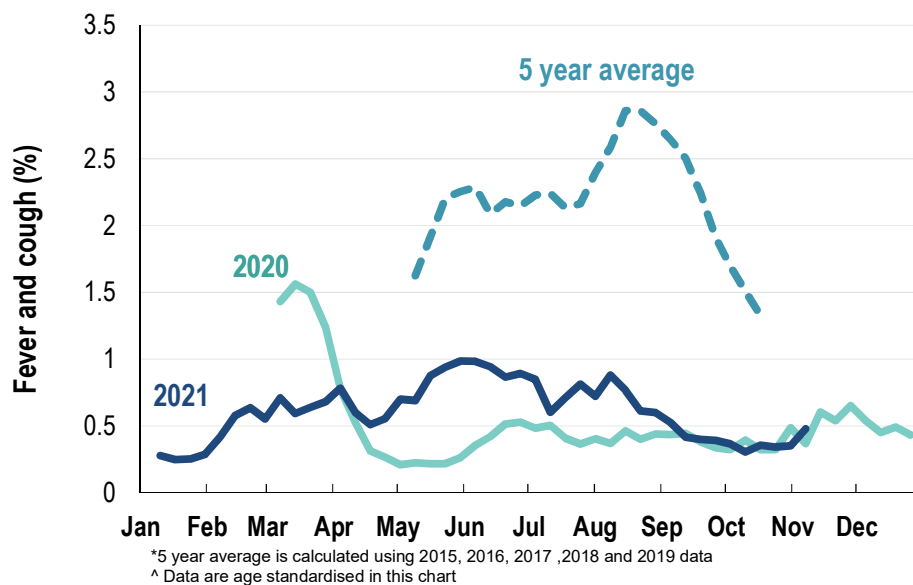


This week influenza-like illness activity is low 47,964 participants this week

Influenza-like illness activity*:

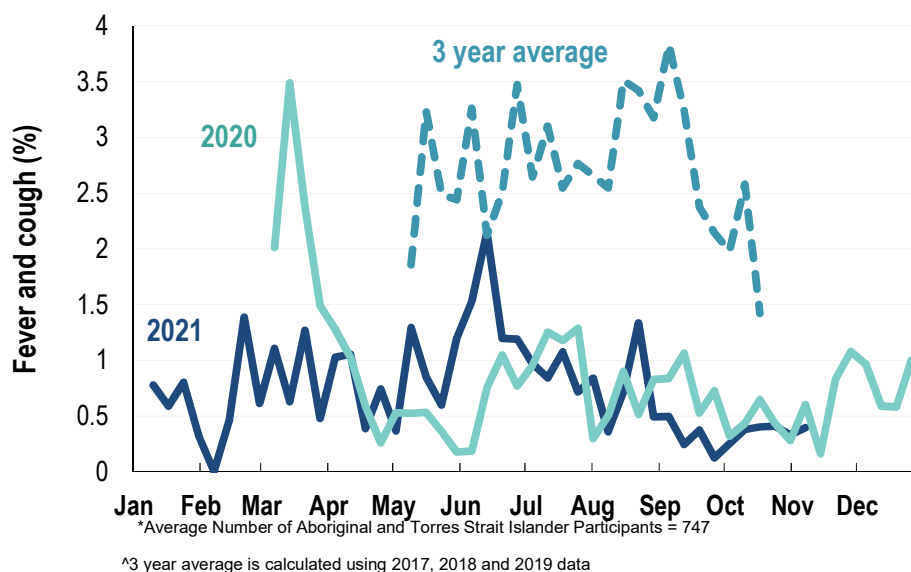
*Influenza-like illness activity is defined as fever & cough for this report

0.5% this week: flu-like illness activity is low



Influenza-like illness activity among Aboriginal and Torres Strait Islander participants

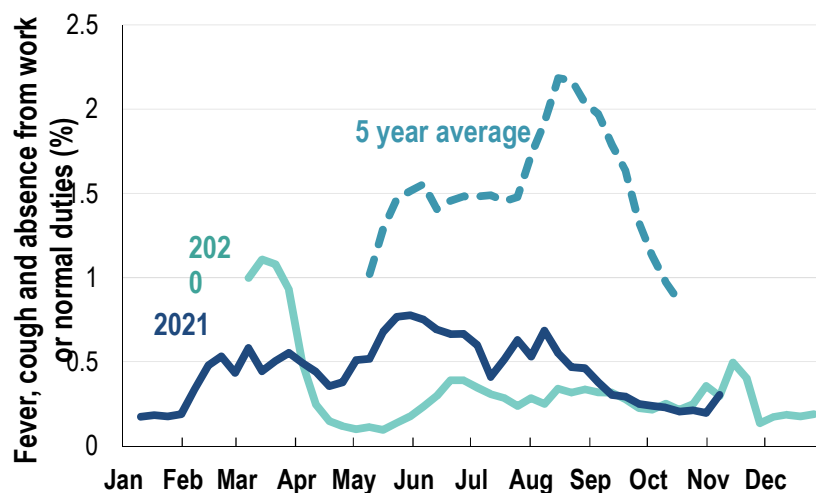
0.4% this week: flu-like illness activity is low



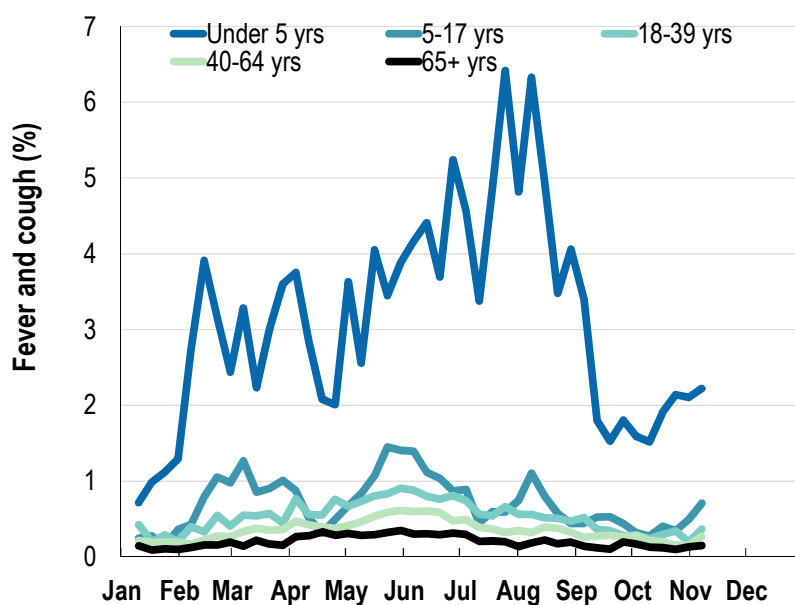
Influenza-like illness severity: <i>54.4% of participants with fever and cough sought medical advice this week</i>		
Influenza-like illness Severity	07 November 2021 number (%)	31 October 2021 number (%)
Number of participants	47964 (100%)	51427 (100%)
Fever & cough	147 (0.3%)	106 (0.2%)
Fever, cough & time-off normal duties	98 (0.2%)	60 (0.1%)
Fever, cough & 3 or more days off work/normal duties	98 (0.2%)	60 (0.1%)
Number of participants with fever and cough	147 (100%)	106 (100%)
*Sought medical advice for fever and cough	80 (54.4%)	47 (44.3%)
Admitted to hospital	4 (2.7%)	0 (0%)
Tested for influenza	16 (10.9%)	9 (8.5%)
Tested, result positive for influenza	2 (1.4%)	0 (0%)
Tested for coronavirus (COVID-19)	87 (59.2%)	54 (50.9%)
Tested, result positive for coronavirus (COVID-19)	3 (2%)	1 (0.9%)

*Includes those who sought medical advice from a general practitioner, COVID-19 clinic, emergency department, or were admitted to hospital for fever & cough

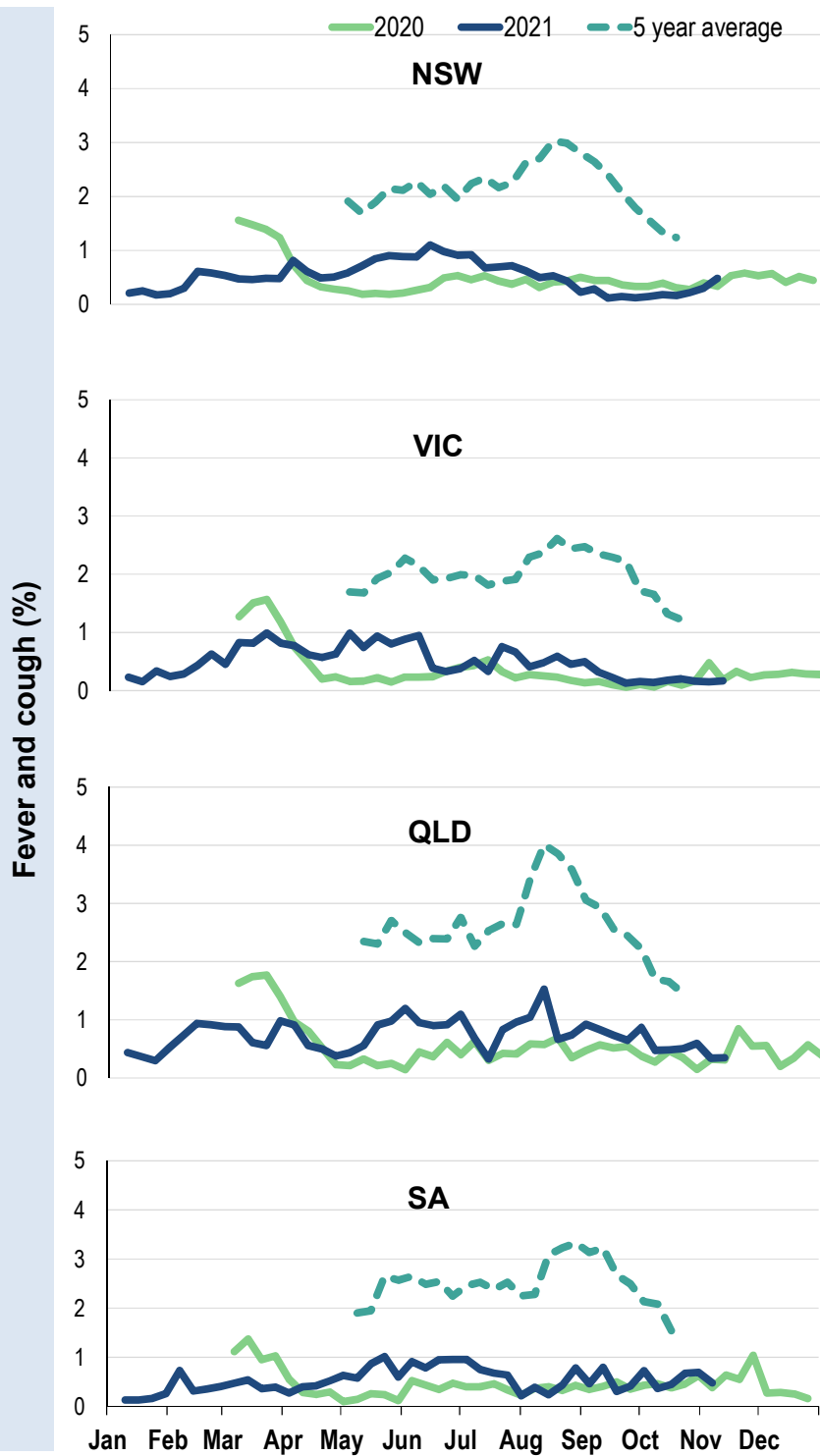
Fever, cough and absence from work or normal duties (Australia):



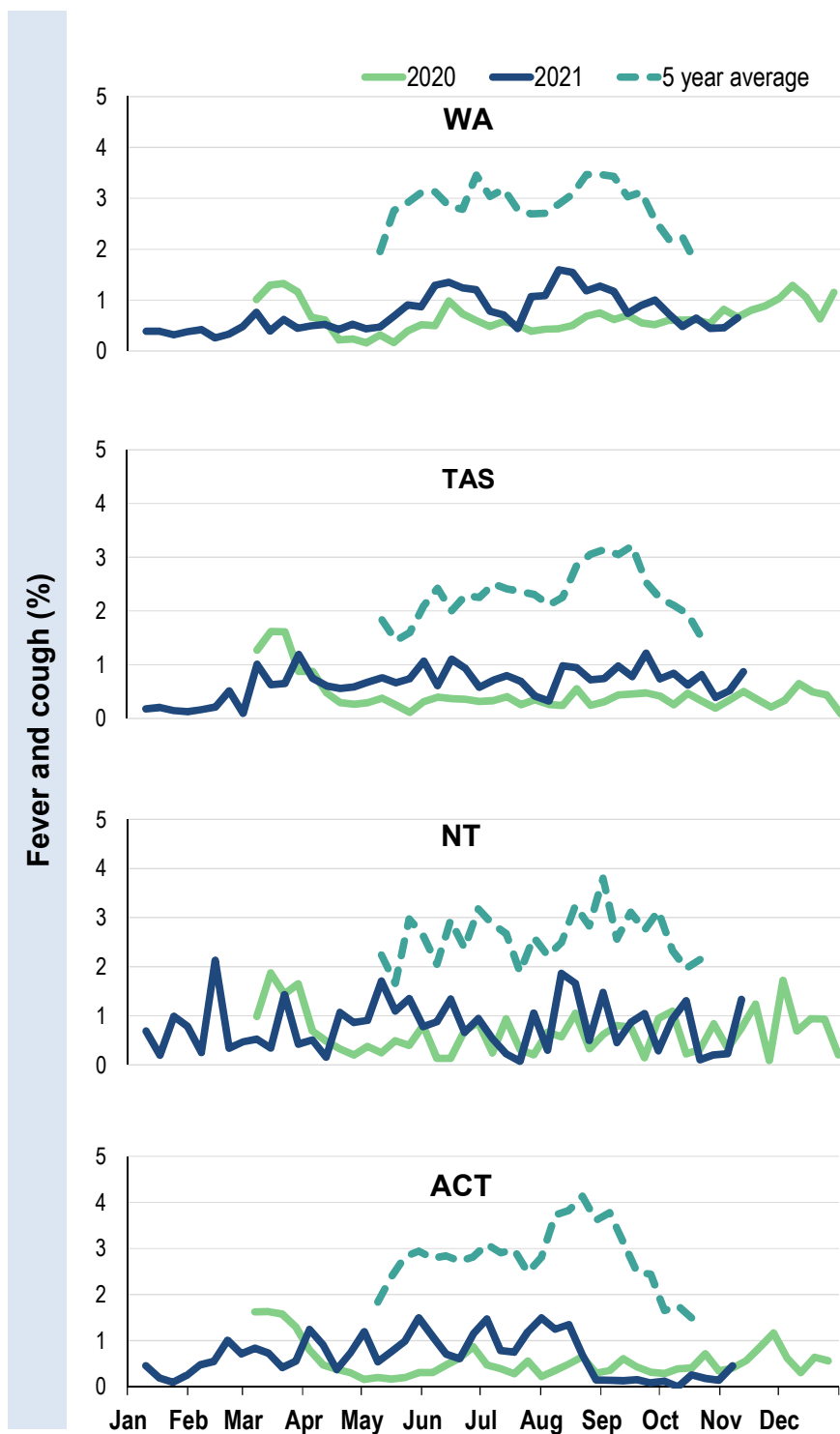
Influenza-like illness activity by age group (Australia):



Influenza-like illness activity by state/territory (age standardised):



Influenza-like illness activity by state/territory (age standardised):

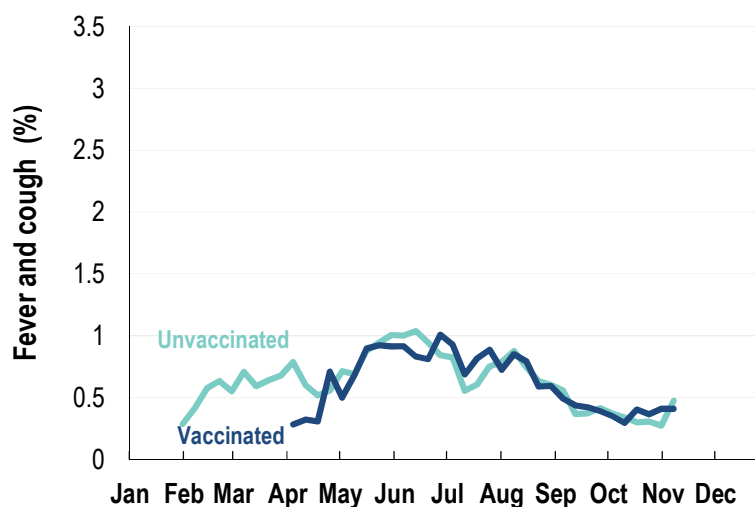


Participation:
47,964 participants (51,427 last week)

State	Participants	% Rate/100,000 population
NSW	16693	34.8% 211.4
VIC	9341	19.5% 146.9
QLD	5885	12.3% 118.9
SA	4353	9.1% 252.1
WA	4821	10.1% 186.3
TAS	3301	6.9% 632.4
NT	874	1.8% 355.1
ACT	2696	5.6% 653.4
AUS	47964	100.0% 194.2

Vaccination rates:

Vaccinated participants:	COVID-19 vaccine			Influenza (%)
	At least 1 dose (%)	At least 2 doses (%)	3 doses (%)	
<5 years				59.4
5-17 years	48.2	41.8	0.2	38.7
18-64 years	98.2	96.0	3.5	73.3
65+ years	99.0	97.5	3.2	90.8
Working with patients	99.0	97.8	9.5	87.0
Aboriginal and/or Torres Strait Islander	86.2	83.0	3.8	66.6
Vaccinated overall (%)	93.0	90.7	3.1	75.9



* Data are age standardised in this chart

^ 2021 Influenza vaccination data not available until 04/04/21 due to low counts

