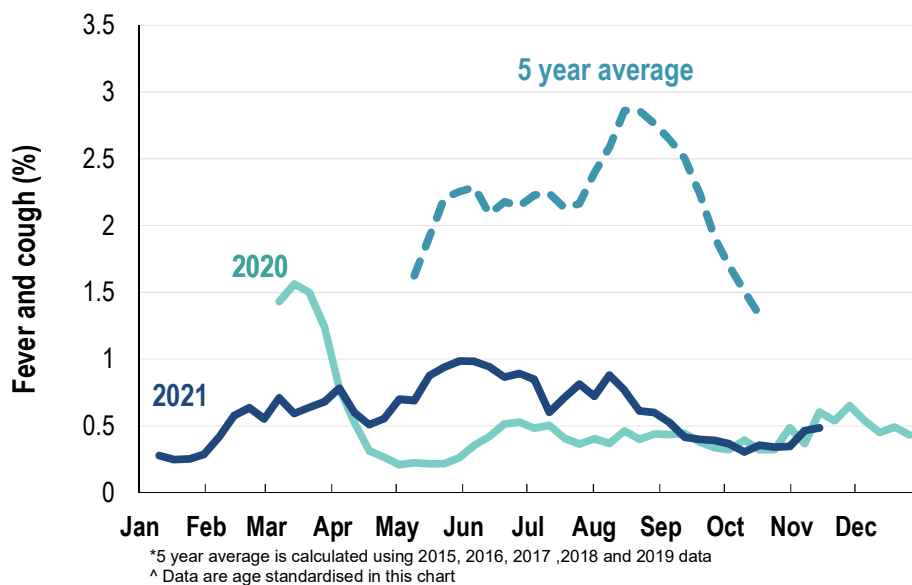


This week influenza-like illness activity is low 45,997 participants this week

Influenza-like illness activity*:

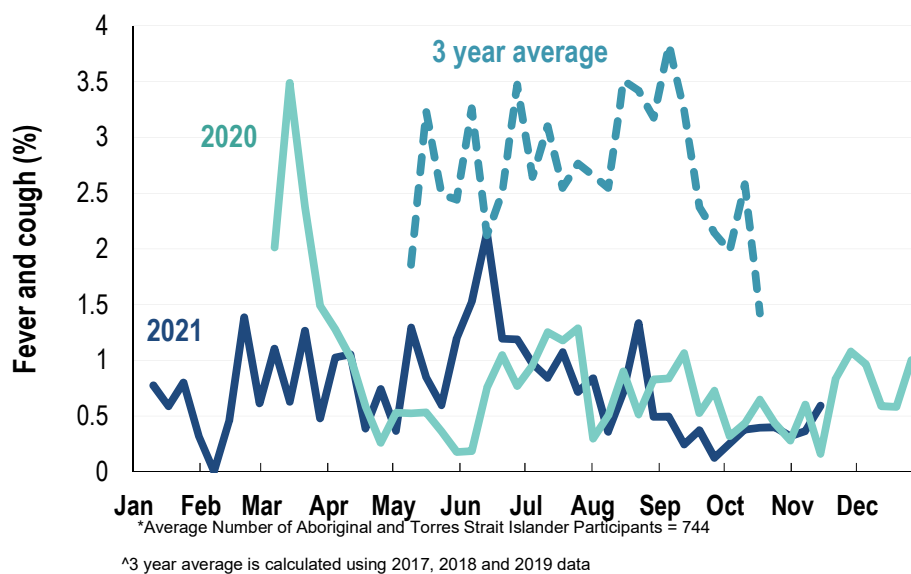
*Influenza-like illness activity is defined as fever & cough for this report

0.5% this week: flu-like illness activity is low



Influenza-like illness activity among Aboriginal and Torres Strait Islander participants

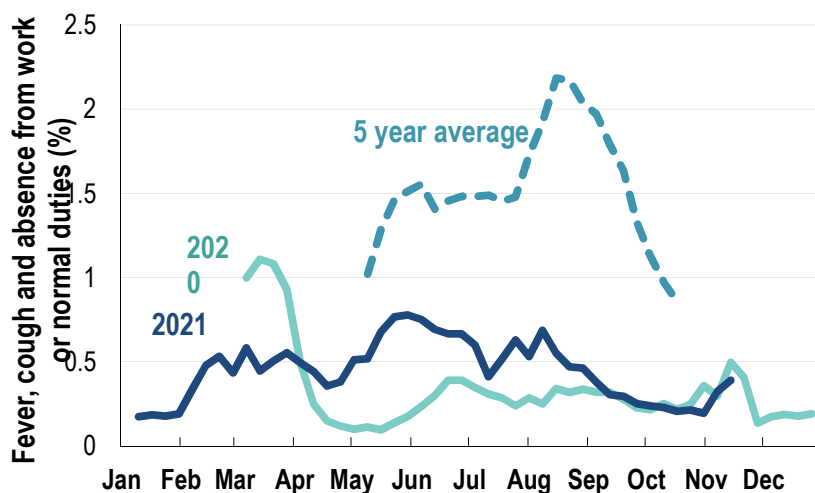
0.6% this week: flu-like illness activity is low



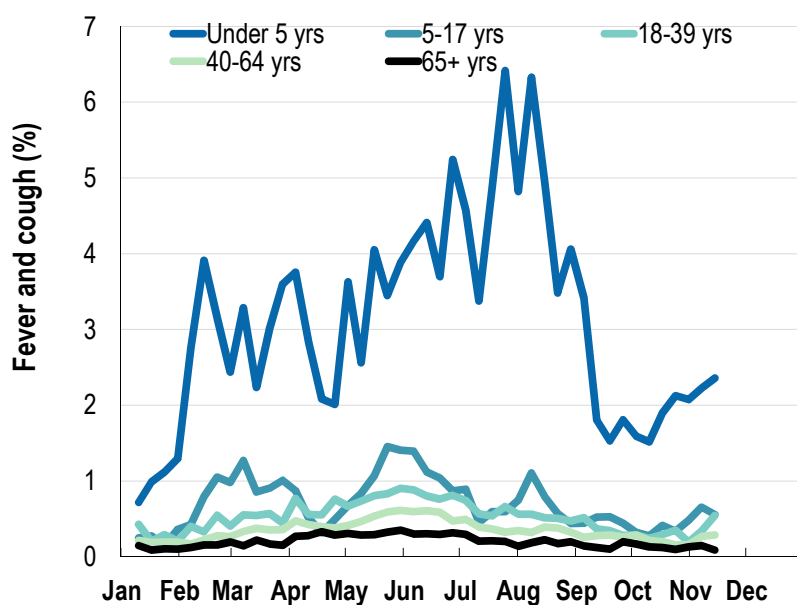
Influenza-like illness severity: <i>59.6% of participants with fever and cough sought medical advice this week</i>		
Influenza-like illness Severity	14 November 2021 number (%)	07 November 2021 number (%)
Number of participants	45997 (100%)	47965 (100%)
Fever & cough	141 (0.3%)	147 (0.3%)
Fever, cough & time-off normal duties	110 (0.2%)	105 (0.2%)
Fever, cough & 3 or more days off work/normal duties	110 (0.2%)	105 (0.2%)
Number of participants with fever and cough	141 (100%)	147 (100%)
*Sought medical advice for fever and cough	84 (59.6%)	88 (59.9%)
Admitted to hospital	5 (3.5%)	5 (3.4%)
Tested for influenza	9 (6.4%)	17 (11.6%)
Tested, result positive for influenza	1 (0.7%)	2 (1.4%)
Tested for coronavirus (COVID-19)	69 (48.9%)	93 (63.3%)
Tested, result positive for coronavirus (COVID-19)	2 (1.4%)	3 (2%)

*Includes those who sought medical advice from a general practitioner, COVID-19 clinic, emergency department, or were admitted to hospital for fever & cough

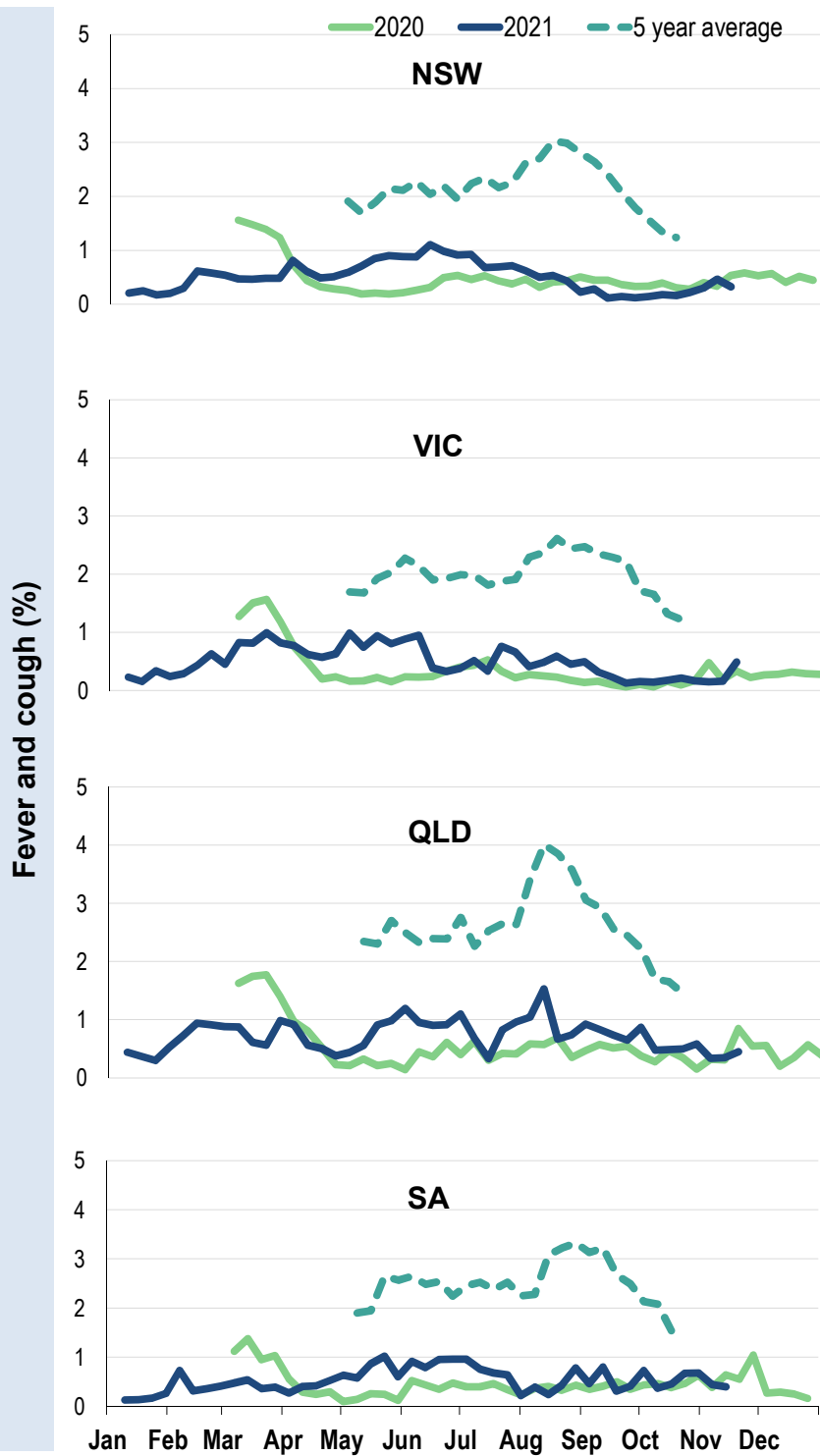
Fever, cough and absence from work or normal duties (Australia):



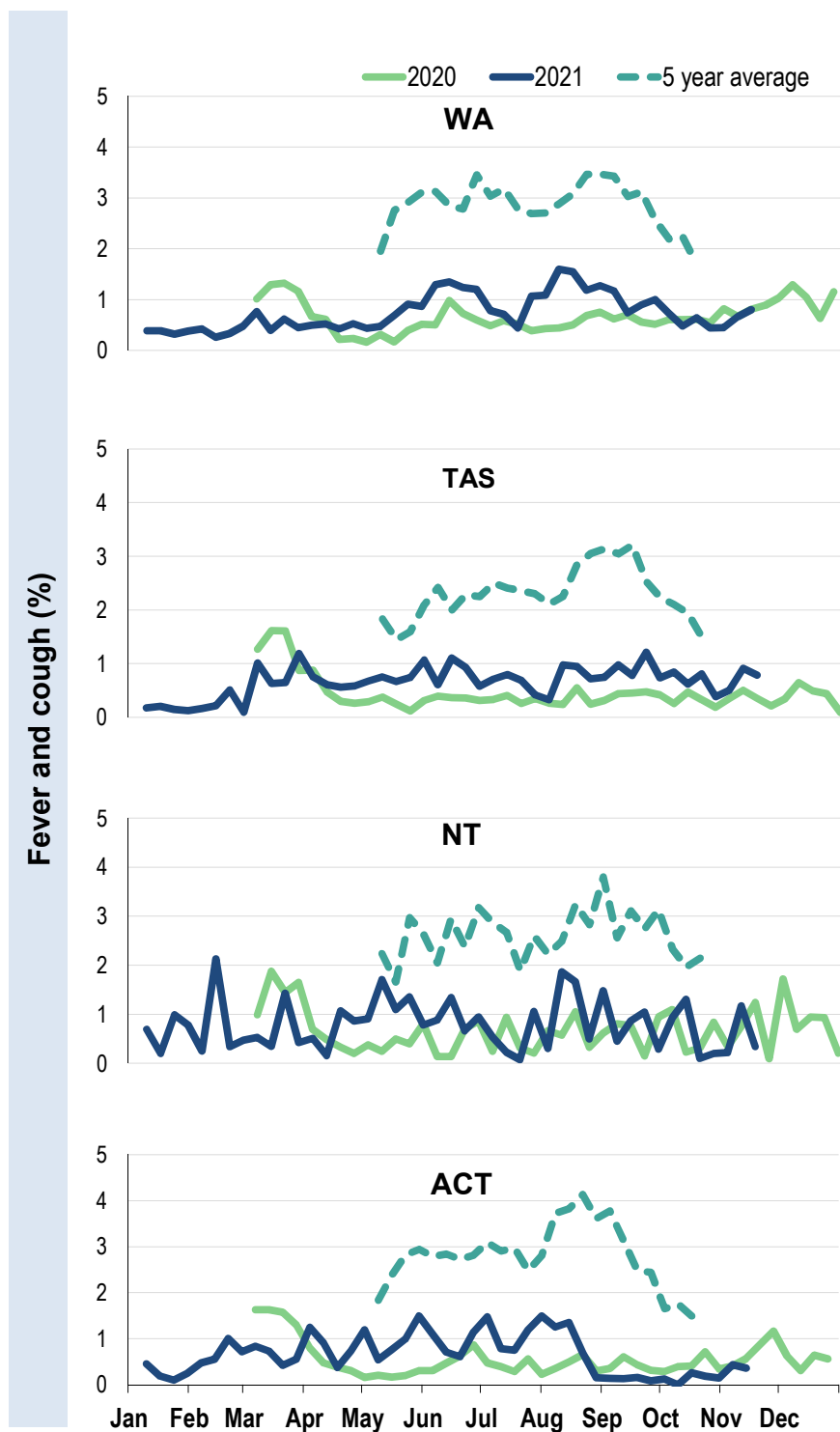
Influenza-like illness activity by age group (Australia):



Influenza-like illness activity by state/territory (age standardised):



Influenza-like illness activity by state/territory (age standardised):

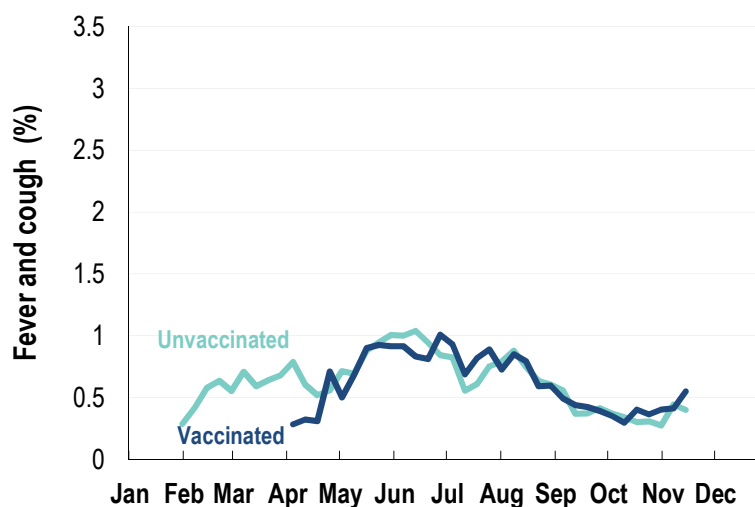


Participation:
45,997 participants (47,965 last week)

State	Participants	% Rate/100,000 population
NSW	16000	34.8% 202.6
VIC	9012	19.6% 141.7
QLD	5569	12.1% 112.5
SA	4181	9.1% 242.1
WA	4560	9.9% 176.3
TAS	3233	7.0% 619.3
NT	881	1.9% 358.0
ACT	2561	5.6% 620.7
AUS	45997	100.0% 186.2

Vaccination rates:

Vaccinated participants:	COVID-19 vaccine			Influenza (%)
	At least 1 dose (%)	At least 2 doses (%)	3 doses (%)	
<5 years				58.6
5-17 years	48.1	43.7	0.3	38.7
18-64 years	98.4	96.6	5.8	73.4
65+ years	99.0	97.9	4.1	90.7
Working with patients	99.2	98.2	15.9	86.9
Aboriginal and/or Torres Strait Islander	83.8	79.9	5.7	65.1
Vaccinated overall (%)	93.2	91.4	4.7	75.9



* Data are age standardised in this chart

^ 2021 Influenza vaccination data not available until 04/04/21 due to low counts

