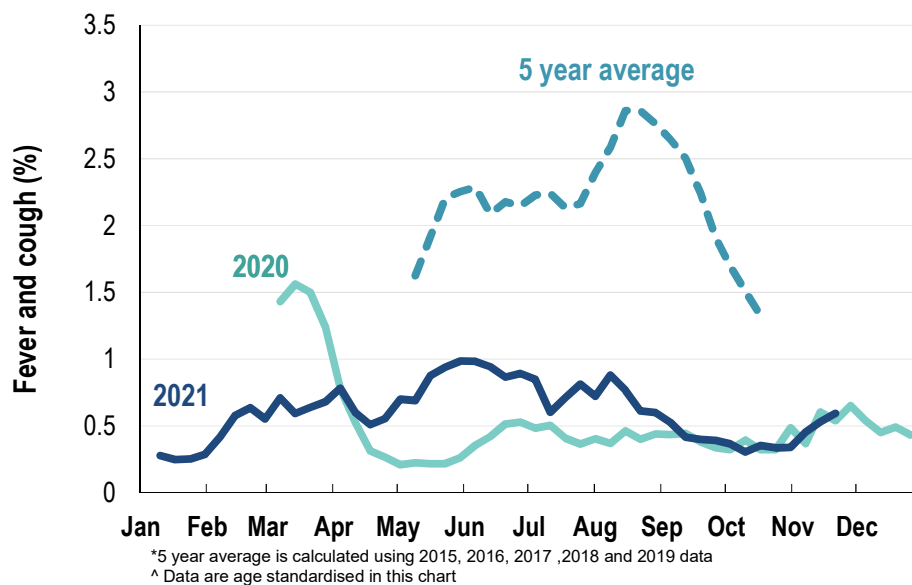


This week influenza-like illness activity is low 43,402 participants this week

Influenza-like illness activity*:

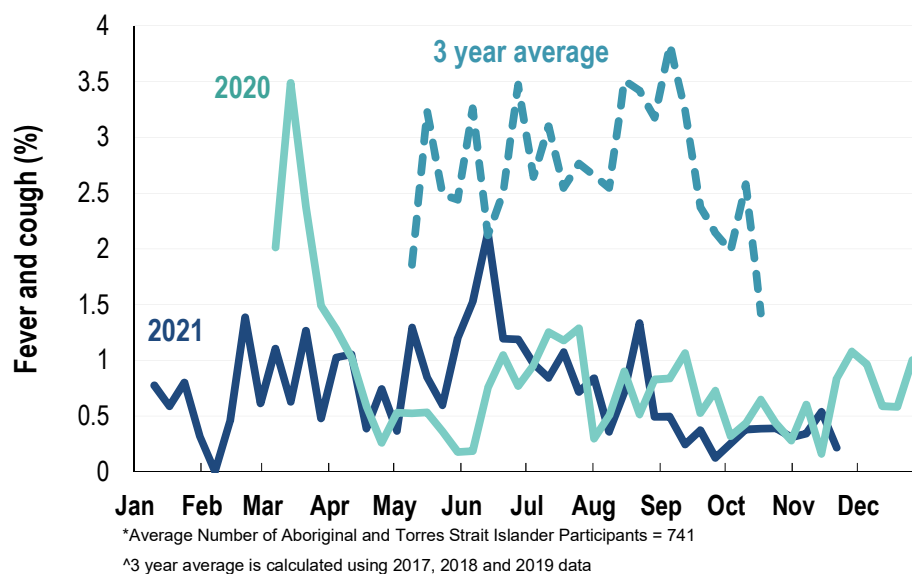
*Influenza-like illness activity is defined as fever & cough for this report

0.6% this week: flu-like illness activity is low



Influenza-like illness activity among Aboriginal and Torres Strait Islander participants

0.2% this week: flu-like illness activity is low

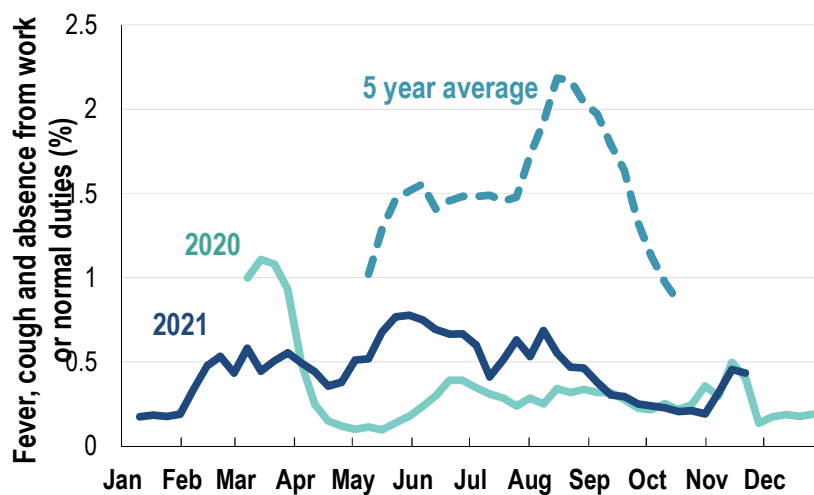


Influenza-like illness severity: <i>54.9% of participants with fever and cough sought medical advice this week</i>		
Influenza-like illness Severity	21 November 2021 number (%)	14 November 2021 number (%)
Number of participants	43402 (100%)	45997 (100%)
Fever & cough	153 (0.4%)	141 (0.3%)
Fever, cough & time-off normal duties	104 (0.2%)	112 (0.2%)
Fever, cough & 3 or more days off work/normal duties	104 (0.2%)	112 (0.2%)
Number of participants with fever and cough	153 (100%)	141 (100%)
*Sought medical advice for fever and cough	84 (54.9%)	88 (62.4%)
Admitted to hospital	2 (1.3%)	5 (3.5%)
Tested for influenza	8 (5.2%)	11 (7.8%)
Tested, result positive for influenza	1 (0.7%)	1 (0.7%)
^Tested for coronavirus (COVID-19)	77 (50.3%)	73 (51.8%)
^Tested, result positive for coronavirus (COVID-19)	3 (2%)	2 (1.4%)

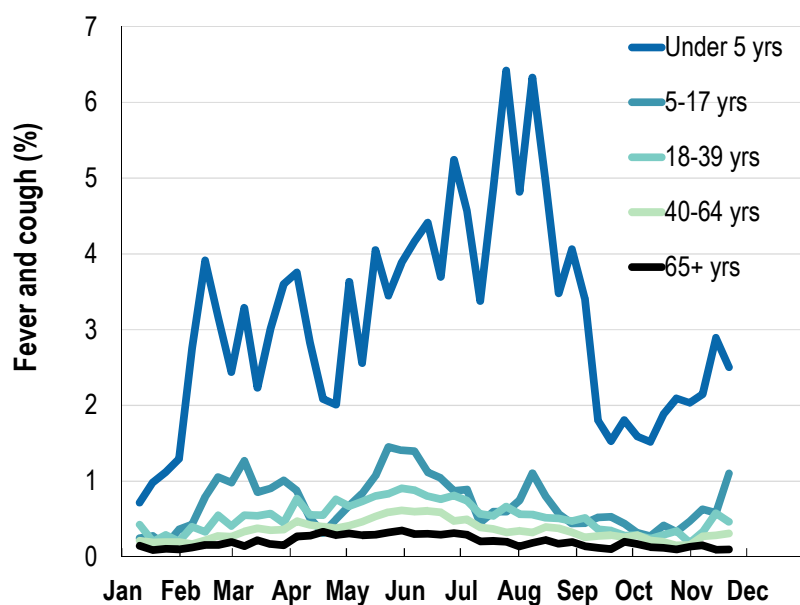
*Includes those who sought medical advice from a general practitioner, COVID-19 clinic, emergency department, or were admitted to hospital for fever & cough

^Includes reported PCR tests (currently excludes reports of Rapid Antigen Tests)

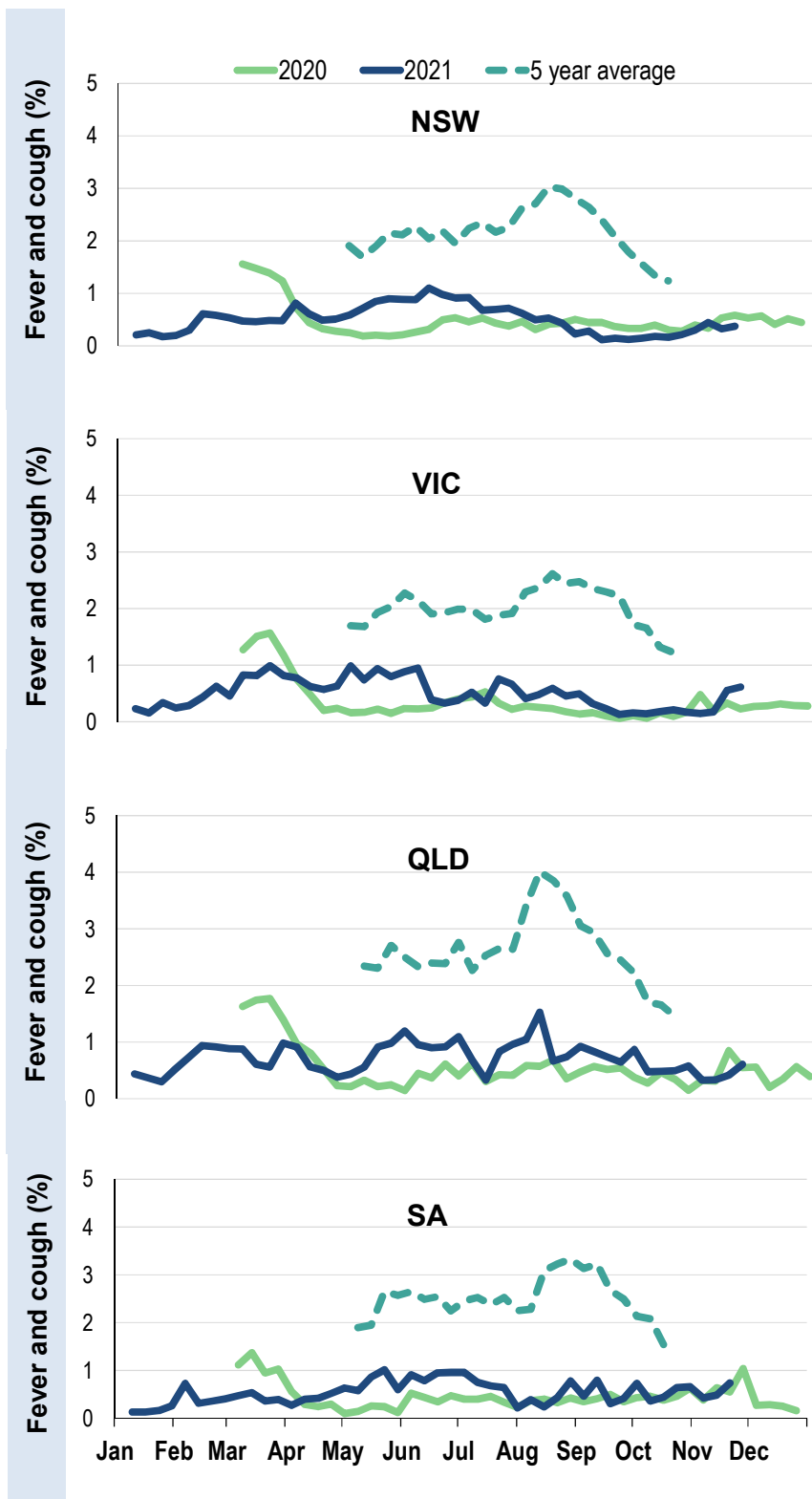
Fever, cough and absence from work or normal duties (Australia):



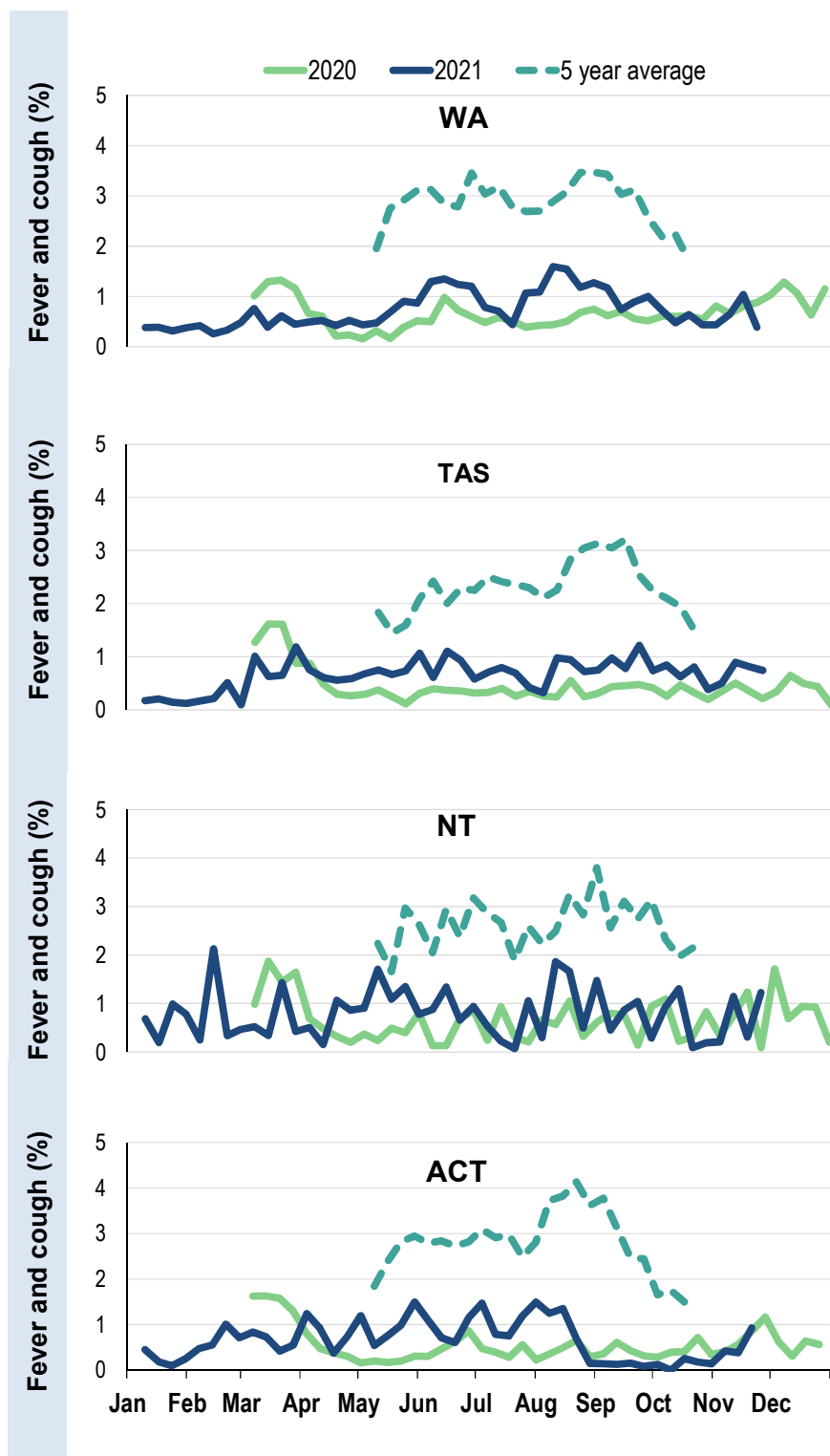
Influenza-like illness activity in 2021 by age group (Australia):



Influenza-like illness activity by state/territory (age standardised):



Influenza-like illness activity by state/territory (age standardised):

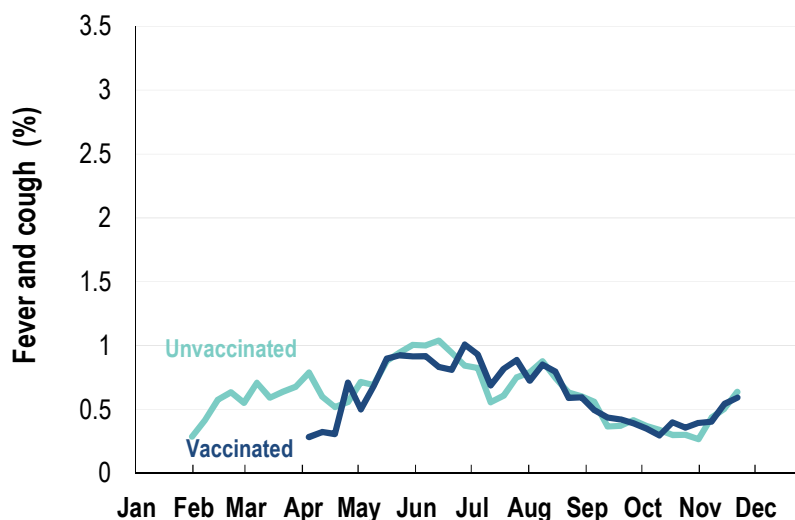


Participation:
43,402 participants (45,997 last week)

State	Participants	% Rate/100,000 population
NSW	15118	34.8% 191.5
VIC	8392	19.3% 132.0
QLD	5275	12.2% 106.6
SA	3990	9.2% 231.0
WA	4345	10.0% 167.9
TAS	3031	7.0% 580.7
NT	818	1.9% 332.4
ACT	2433	5.6% 589.7
AUS	43402	100.0% 175.7

Vaccination rates:

Vaccinated participants:	COVID-19 vaccine			Influenza (%)
	At least 1 dose (%)	At least 2 doses (%)	3 doses (%)	
<5 years				56.9
5-17 years	48.8	45.3	0.3	38.3
18-64 years	98.6	97.1	7.6	73.3
65+ years	99.0	98.1	4.9	90.8
Working with patients	99.2	98.3	20.4	86.7
Aboriginal and/or Torres Strait Islander	84.9	82.3	6.3	64.8
Vaccinated overall (%)	93.5	92.1	6.0	76.0



* Data are age standardised in this chart

^ 2021 Influenza vaccination data not available until 04/04/21 due to low counts

