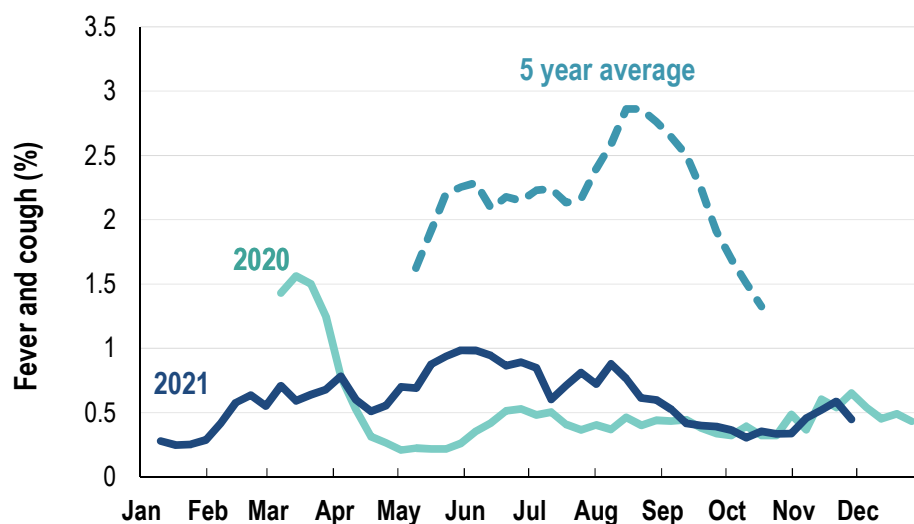


This week influenza-like illness activity is low 42,774 participants this week

Influenza-like illness activity*:

*Influenza-like illness activity is defined as fever & cough for this report

0.4% this week: flu-like illness activity is low

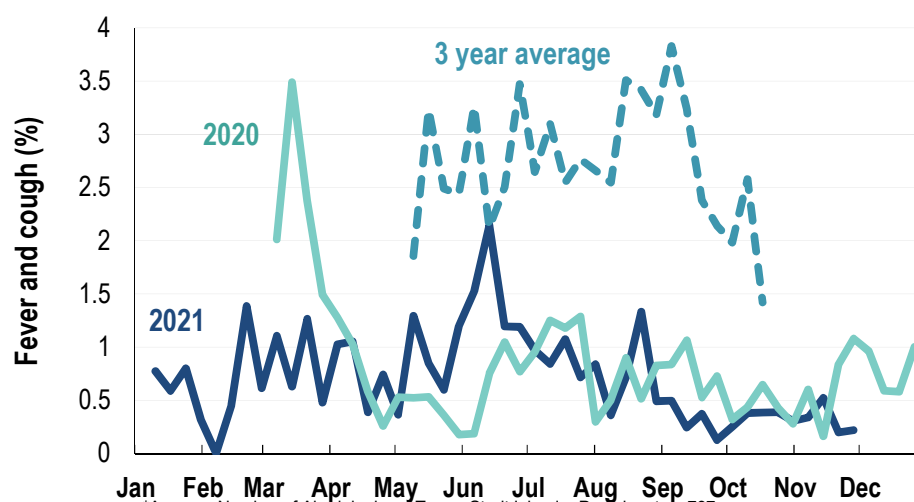


*5 year average is calculated using 2015, 2016, 2017, 2018 and 2019 data

^ Data are age standardised in this chart

Influenza-like illness activity among Aboriginal and Torres Strait Islander participants

0.2% this week: flu-like illness activity is low



*Average Number of Aboriginal and Torres Strait Islander Participants = 737

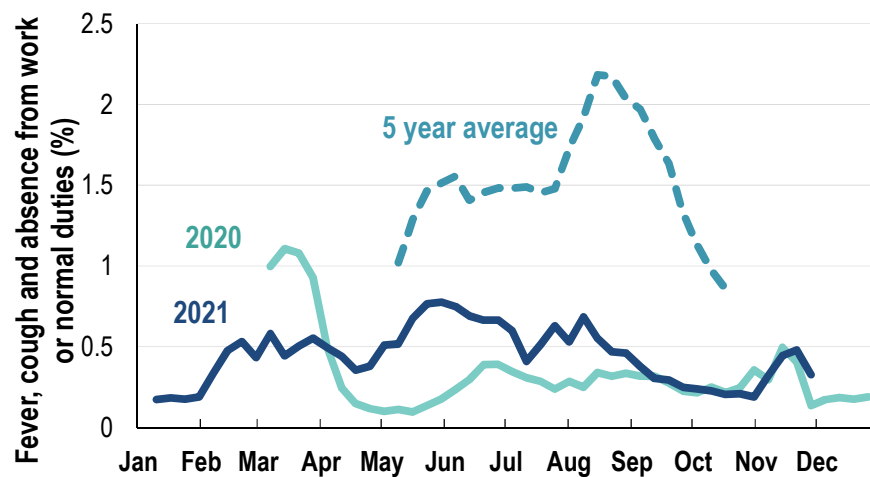
^3 year average is calculated using 2017, 2018 and 2019 data

Influenza-like illness severity: 55.1% of participants with fever and cough sought medical advice this week		
Influenza-like illness Severity	Week ending 28 November number (%)	Week ending 21 November number (%)
Number of participants	42774 (100%)	43402 (100%)
Fever & cough	138 (0.3%)	153 (0.4%)
Fever, cough & time-off normal duties	99 (0.2%)	112 (0.3%)
Fever, cough & 3 or more days off work/normal duties	99 (0.2%)	112 (0.3%)
Number of participants with fever and cough	138 (100%)	153 (100%)
*Sought medical advice for fever and cough	76 (55.1%)	90 (58.8%)
Admitted to hospital	3 (2.2%)	3 (2%)
Tested for influenza	5 (3.6%)	9 (5.9%)
Tested, result positive for influenza	1 (0.7%)	1 (0.7%)
^Tested for coronavirus (COVID-19)	71 (51.4%)	84 (54.9%)
^Tested, result positive for coronavirus (COVID-19)	1 (0.7%)	4 (2.6%)

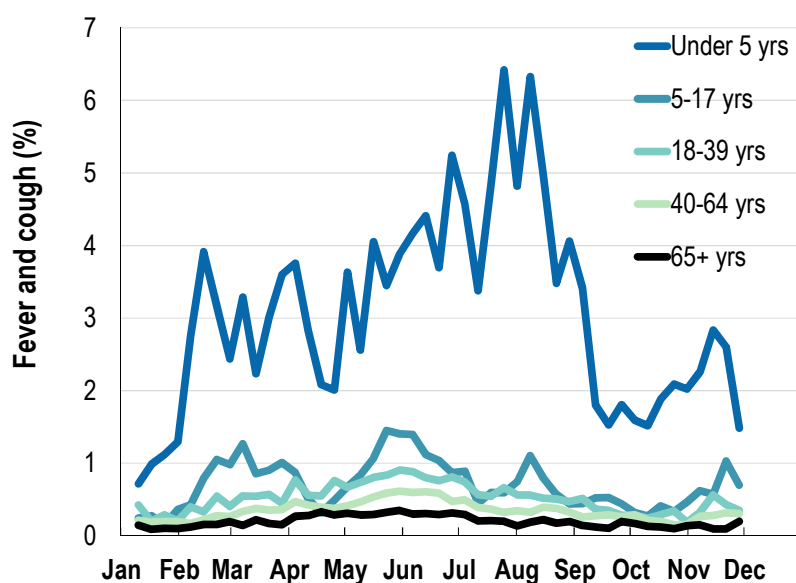
*Includes those who sought medical advice from a general practitioner, COVID-19 clinic, emergency department, or were admitted to hospital for fever & cough

^Includes reported PCR tests (currently excludes reports of Rapid Antigen Tests)

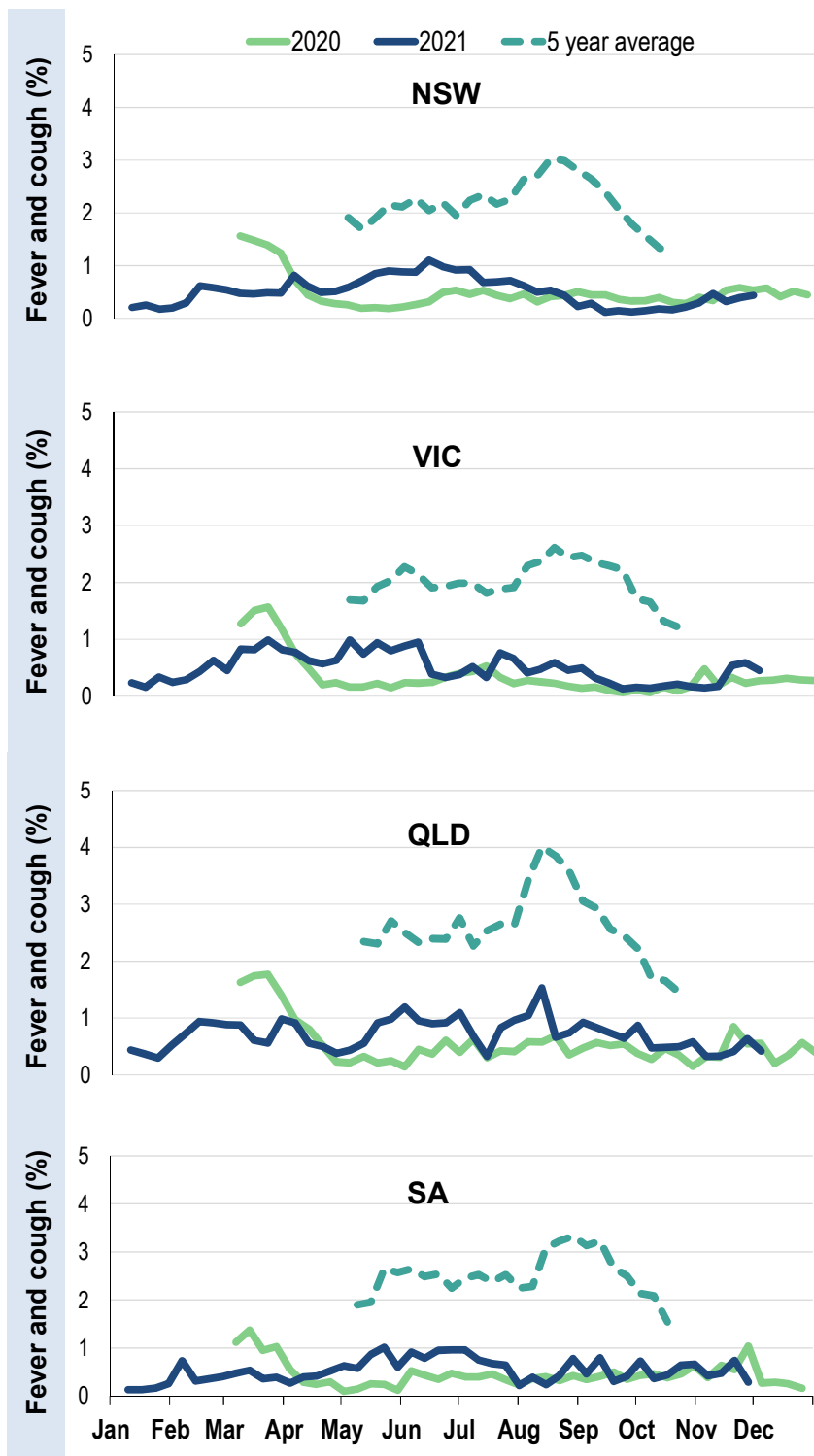
Fever, cough and absence from work or normal duties (Australia):



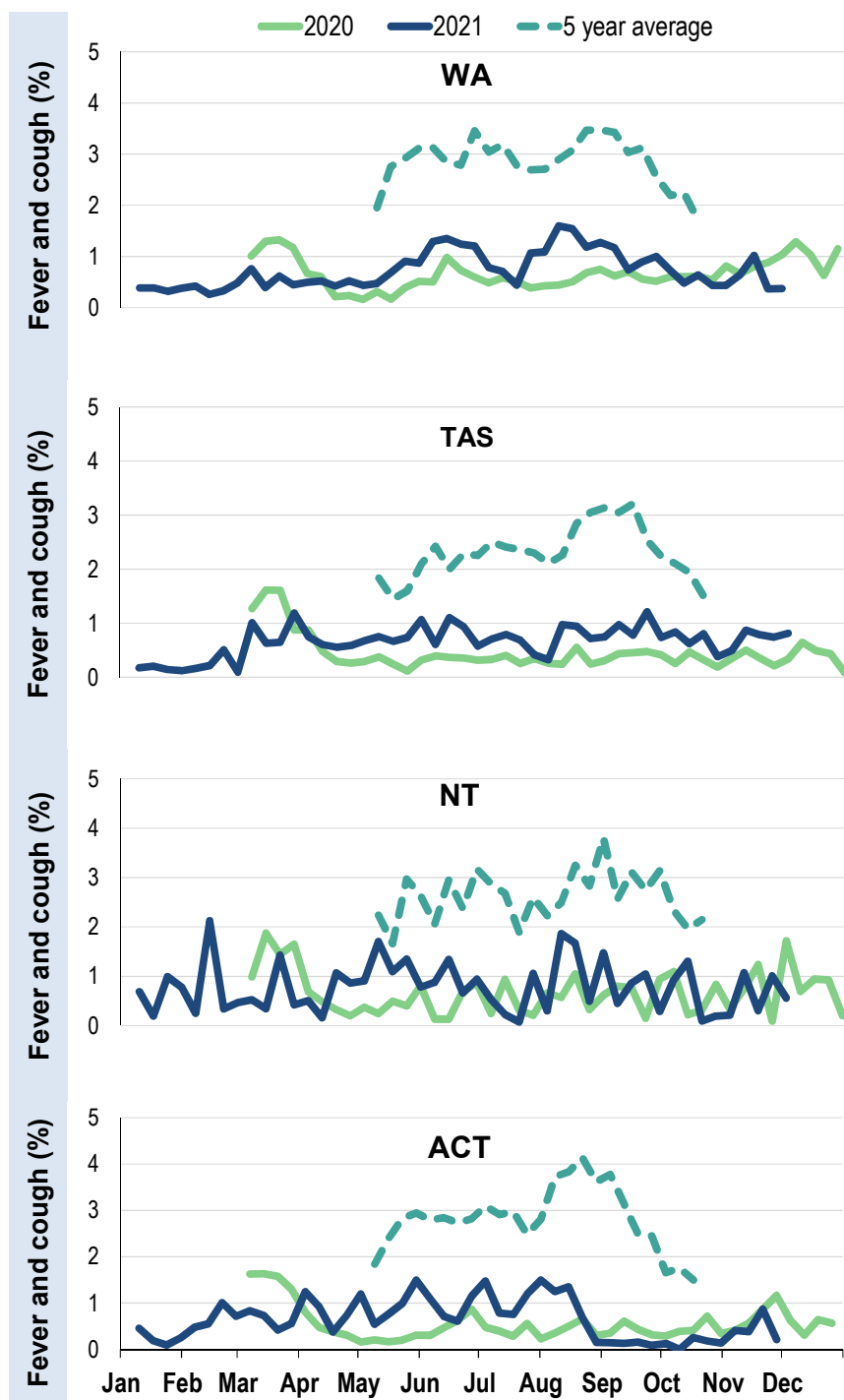
Influenza-like illness activity by age group in 2021 (Australia):



Influenza-like illness activity by state/territory (age standardised):



Influenza-like illness activity by state/territory (age standardised):

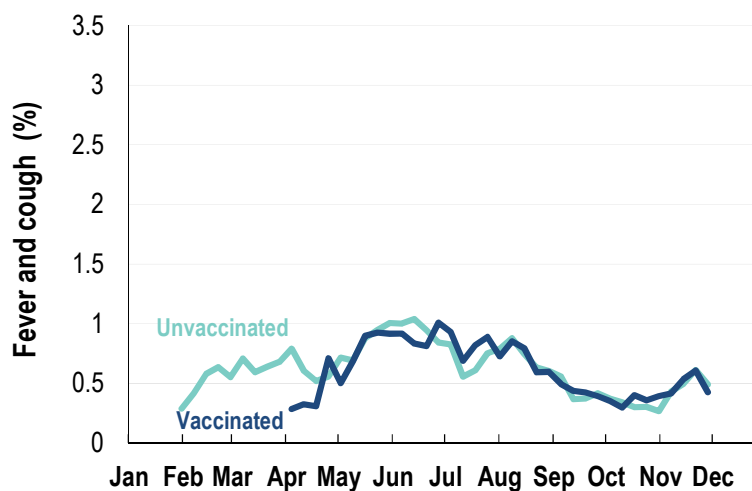


Participation:
42,305 participants (44,832 last week)

State	Participants	% Rate/100,000 population
NSW	14748	34.9% 186.8
VIC	8363	19.8% 131.5
QLD	5114	12.1% 103.3
SA	3838	9.1% 222.2
WA	4090	9.7% 158.1
TAS	2979	7.0% 570.7
NT	799	1.9% 324.7
ACT	2374	5.6% 575.4
AUS	42305	100.0% 171.3

Vaccination rates:

Vaccinated participants:	COVID-19 vaccine			Influenza (%)
	At least 1 dose (%)	At least 2 doses (%)	3 doses (%)	
<5 years				57.3
5-17 years	49.3	46.8	0.3	39.0
18-64 years	98.7	97.6	9.4	73.7
65+ years	99.1	98.5	5.7	90.9
Working with patients	99.3	98.7	24.7	87.0
Aboriginal and/or Torres Strait Islander	83.1	82.0	7.5	65.5
Vaccinated overall (%)	93.6	92.5	7.4	76.4



* Data are age standardised in this chart

^ 2021 Influenza vaccination data not available until 04/04/21 due to low counts

