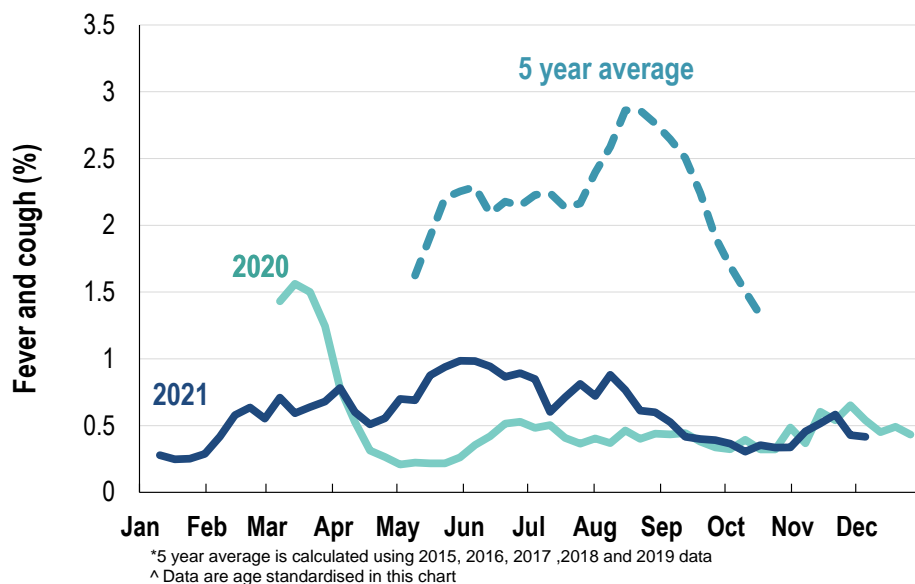


This week influenza-like illness activity is low
43,100 participants this week

Influenza-like illness activity*:

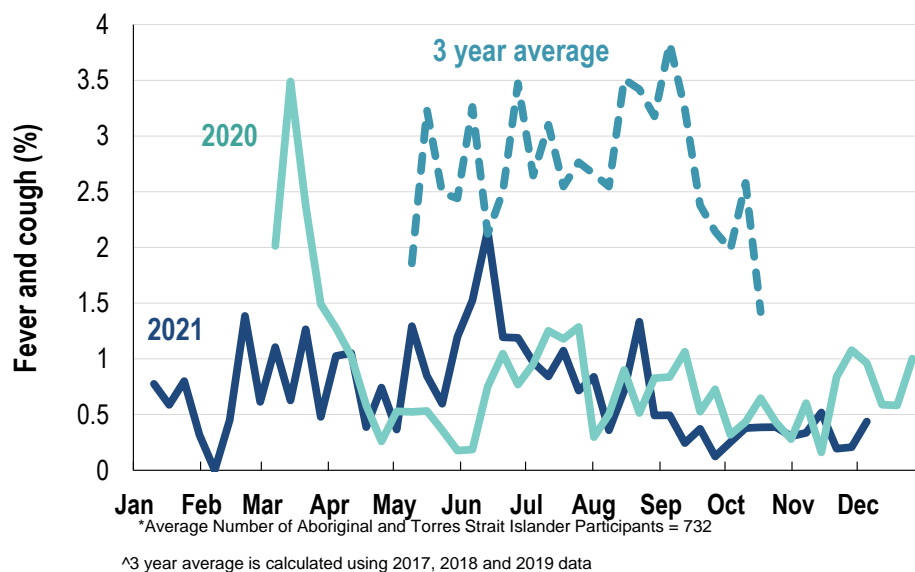
*Influenza-like illness activity is defined as fever & cough for this report

0.4% this week: flu-like illness activity is low



Influenza-like illness activity among Aboriginal and Torres Strait Islander participants

0.4% this week: flu-like illness activity is low



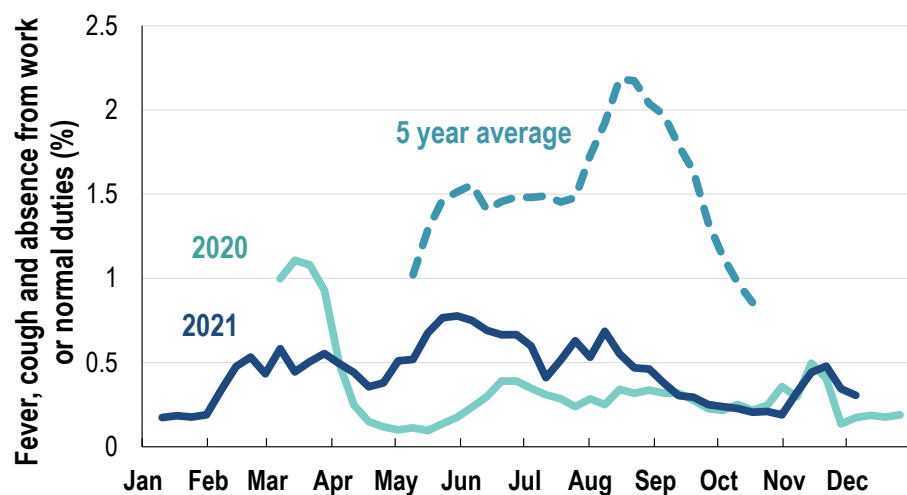
Influenza-like illness severity:
53.5% of participants with fever and cough sought medical advice this week

Influenza-like illness Severity	05 December 2021 number (%)	28 November 2021 number (%)
Number of participants	43100 (100%)	42774 (100%)
Fever & cough	129 (0.3%)	138 (0.3%)
Fever, cough & time-off normal duties	94 (0.2%)	106 (0.2%)
Fever, cough & 3 or more days off work/normal duties	94 (0.2%)	106 (0.2%)
Number of participants with fever and cough	129 (100%)	138 (100%)
*Sought medical advice for fever and cough	69 (53.5%)	82 (59.4%)
Admitted to hospital	2 (1.6%)	3 (2.2%)
Tested for influenza	6 (4.7%)	8 (5.8%)
Tested, result positive for influenza	0 (0%)	1 (0.7%)
^Tested for coronavirus (COVID-19)	66 (51.2%)	80 (58%)
^Tested, result positive for coronavirus (COVID-19)	3 (2.3%)	1 (0.7%)

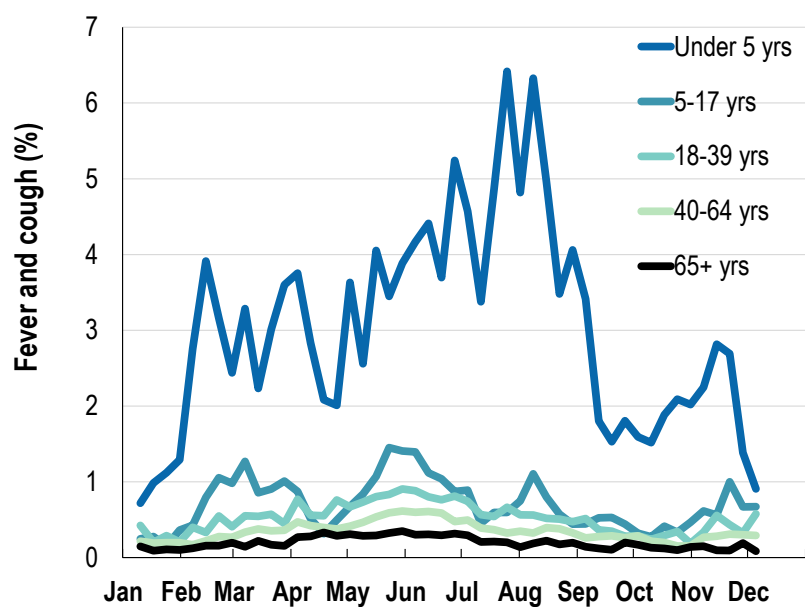
*Includes those who sought medical advice from a general practitioner, COVID-19 clinic, emergency department, or were admitted to hospital for fever & cough

^Includes reported PCR tests (currently excludes reports of Rapid Antigen Tests)

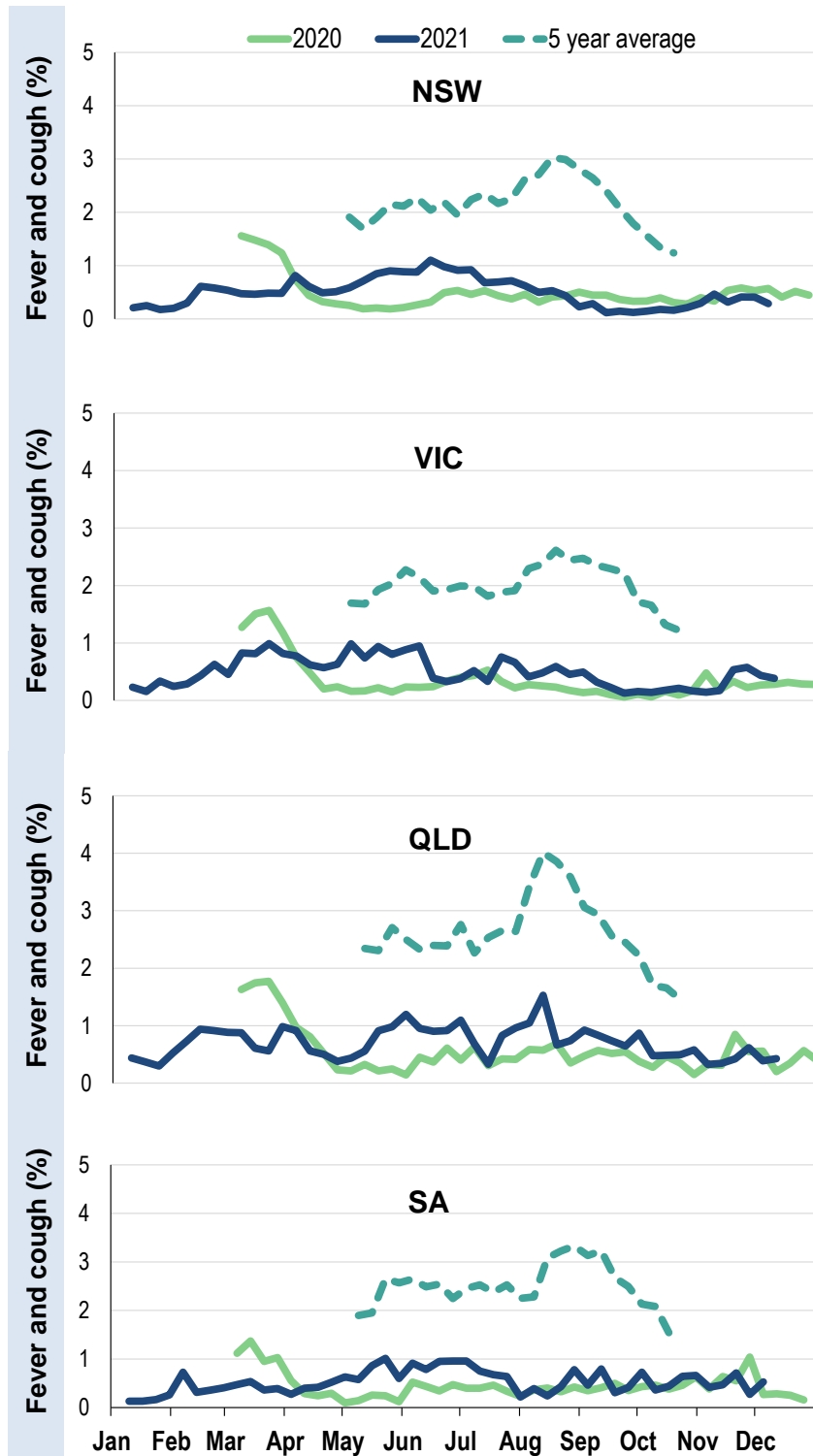
Fever, cough and absence from work or normal duties (Australia):



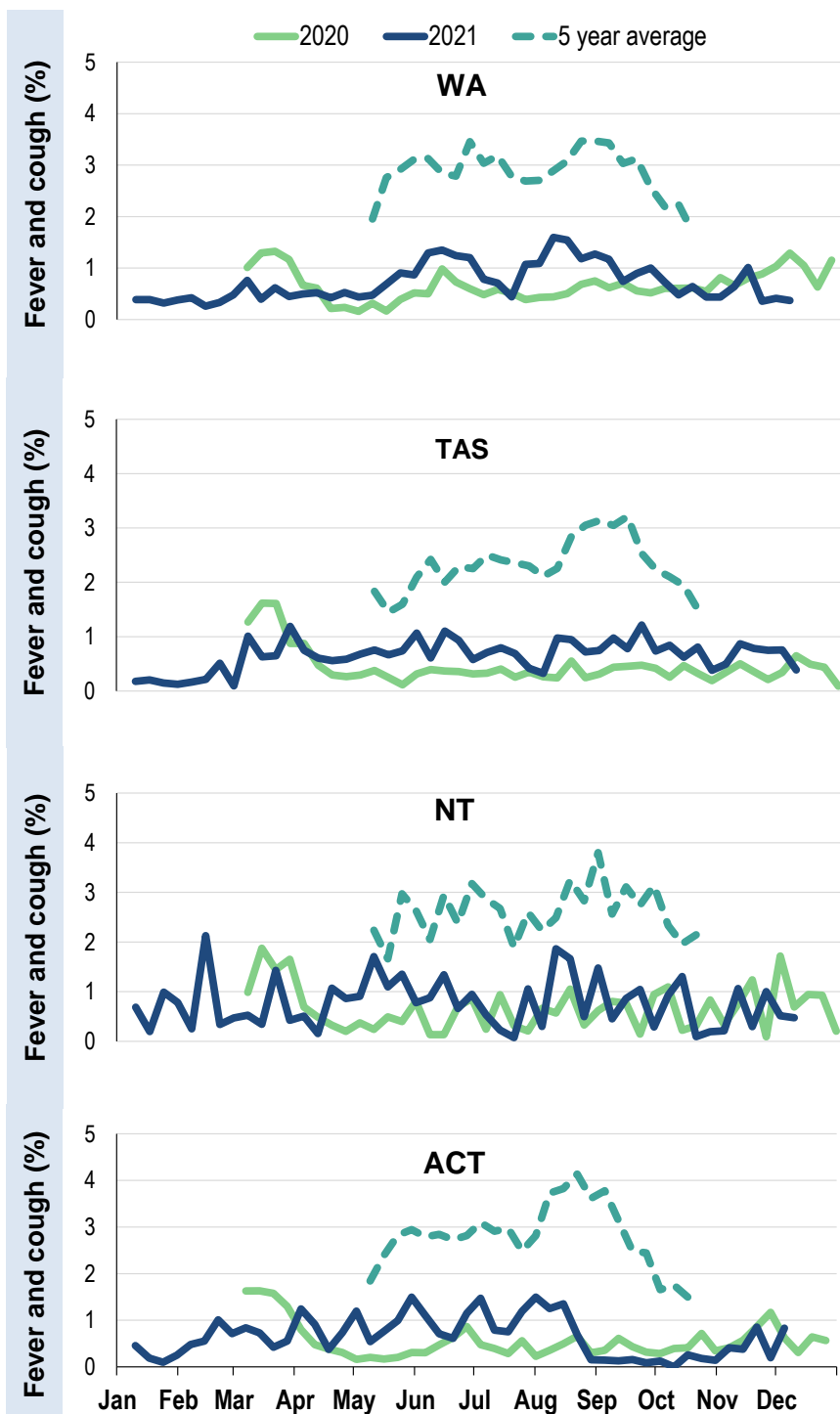
Influenza-like illness activity by age group in 2021 (Australia):



Influenza-like illness activity by state/territory (age standardised):



Influenza-like illness activity by state/territory (age standardised):

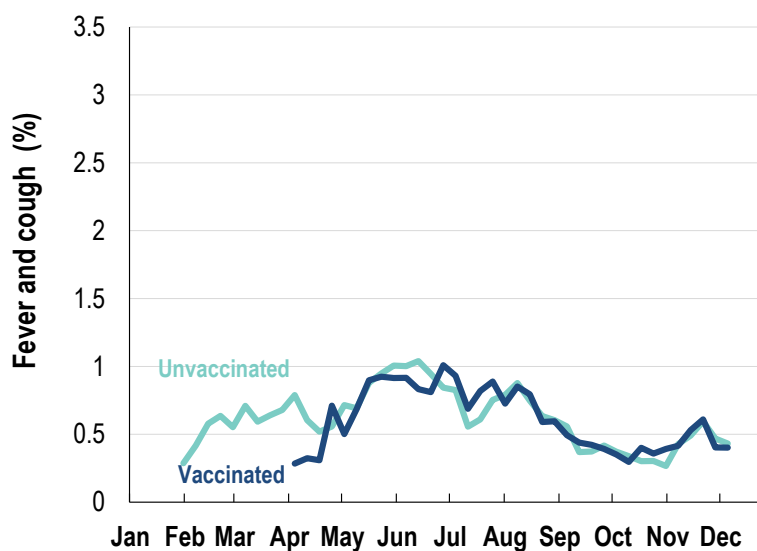


Participation:
43,100 participants (42,774 last week)

State	Participants	%	Rate/100,000 population
NSW	14905	34.6%	188.8
VIC	8401	19.5%	132.1
QLD	5261	12.2%	106.3
SA	3976	9.2%	230.2
WA	4324	10.0%	167.1
TAS	3064	7.1%	587.0
NT	797	1.8%	323.9
ACT	2372	5.5%	574.9
AUS	43100	100.0%	174.5

Vaccination rates:

Vaccinated participants:	COVID-19 vaccine			Influenza (%)
	At least 1 dose (%)	At least 2 doses (%)	3 doses (%)	
<5 years				59.7
5-17 years	49.1	46.4	0.3	38.3
18-64 years	98.7	97.8	12.0	73.6
65+ years	99.2	98.7	7.4	90.8
Working with patients	99.4	98.9	30.8	87.3
Aboriginal and/or Torres Strait Islander	85.1	84.2	9.6	65.2
Vaccinated overall (%)	93.7	92.8	9.4	76.3



* Data are age standardised in this chart

^ 2021 Influenza vaccination data not available until 04/04/21 due to low counts

