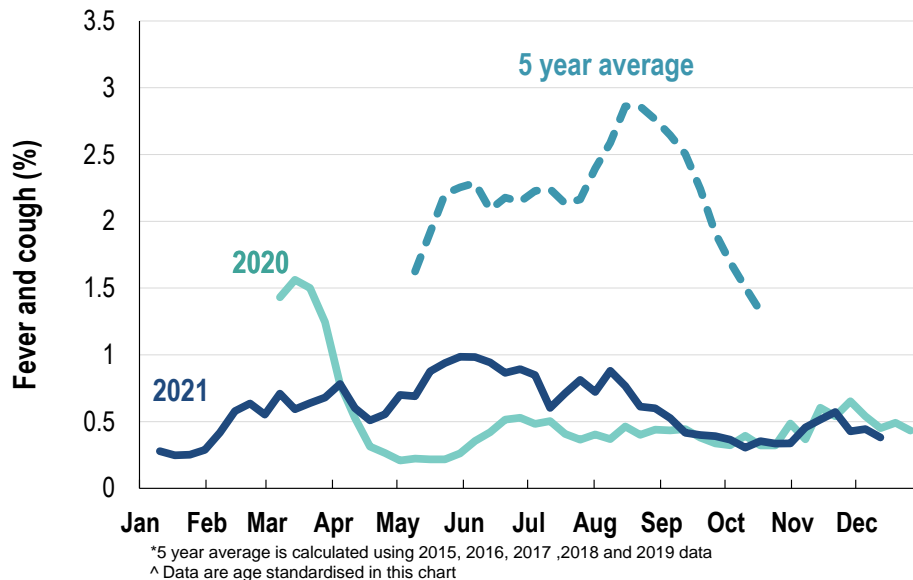


This week influenza-like illness activity is low 42,569 participants this week

Influenza-like illness activity*:

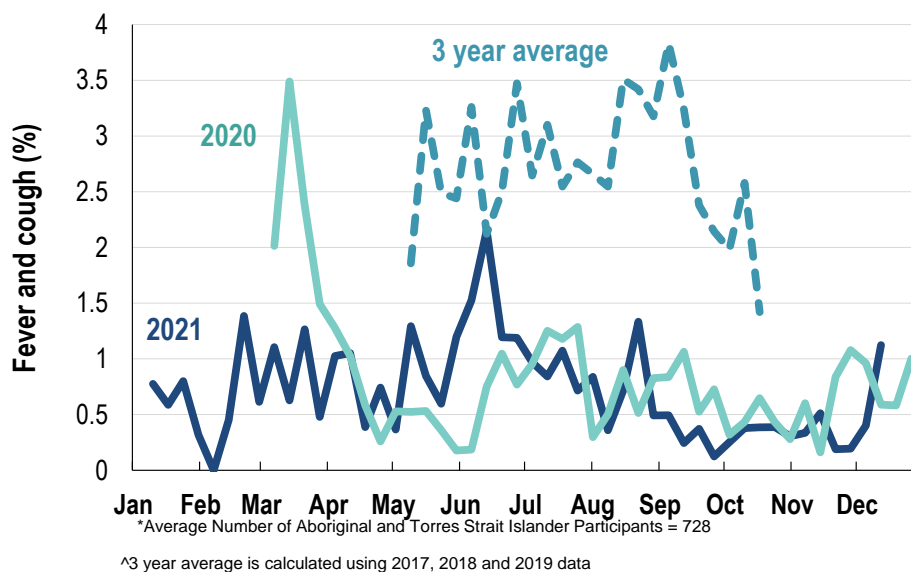
*Influenza-like illness activity is defined as fever & cough for this report

0.4% this week: flu-like illness activity is low



Influenza-like illness activity among Aboriginal and Torres Strait Islander participants

1.1% this week: flu-like illness activity is low



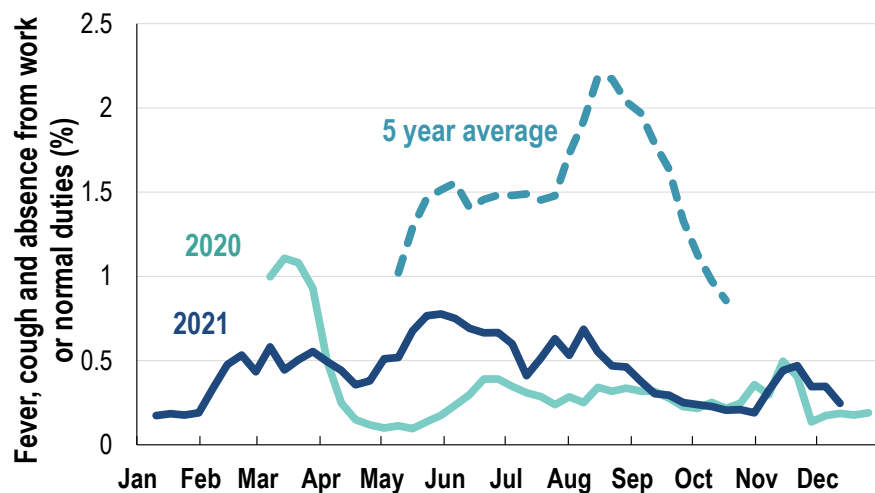
Influenza-like illness severity:
63.9% of participants with fever and cough sought medical advice this week

Influenza-like illness Severity	12 December 2021 number (%)	05 December 2021 number (%)
Number of participants	42569 (100%)	43100 (100%)
Fever & cough	122 (0.3%)	129 (0.3%)
Fever, cough & time-off normal duties	76 (0.2%)	99 (0.2%)
Fever, cough & 3 or more days off work/normal duties	76 (0.2%)	99 (0.2%)
Number of participants with fever and cough	122 (100%)	129 (100%)
*Sought medical advice for fever and cough	78 (63.9%)	76 (58.9%)
Admitted to hospital	3 (2.5%)	4 (3.1%)
Tested for influenza	15 (12.3%)	7 (5.4%)
Tested, result positive for influenza	0 (0%)	0 (0%)
^Tested for coronavirus (COVID-19)	69 (56.6%)	74 (57.4%)
^Tested, result positive for coronavirus (COVID-19)	8 (6.6%)	4 (3.1%)

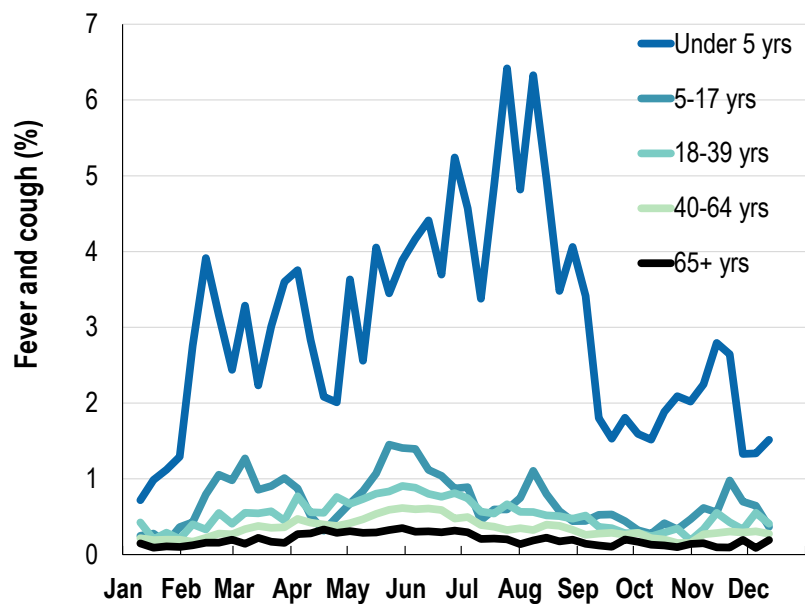
*Includes those who sought medical advice from a general practitioner, COVID-19 clinic, emergency department, or were admitted to hospital for fever & cough

^Includes reported PCR tests (currently excludes reports of Rapid Antigen Tests)

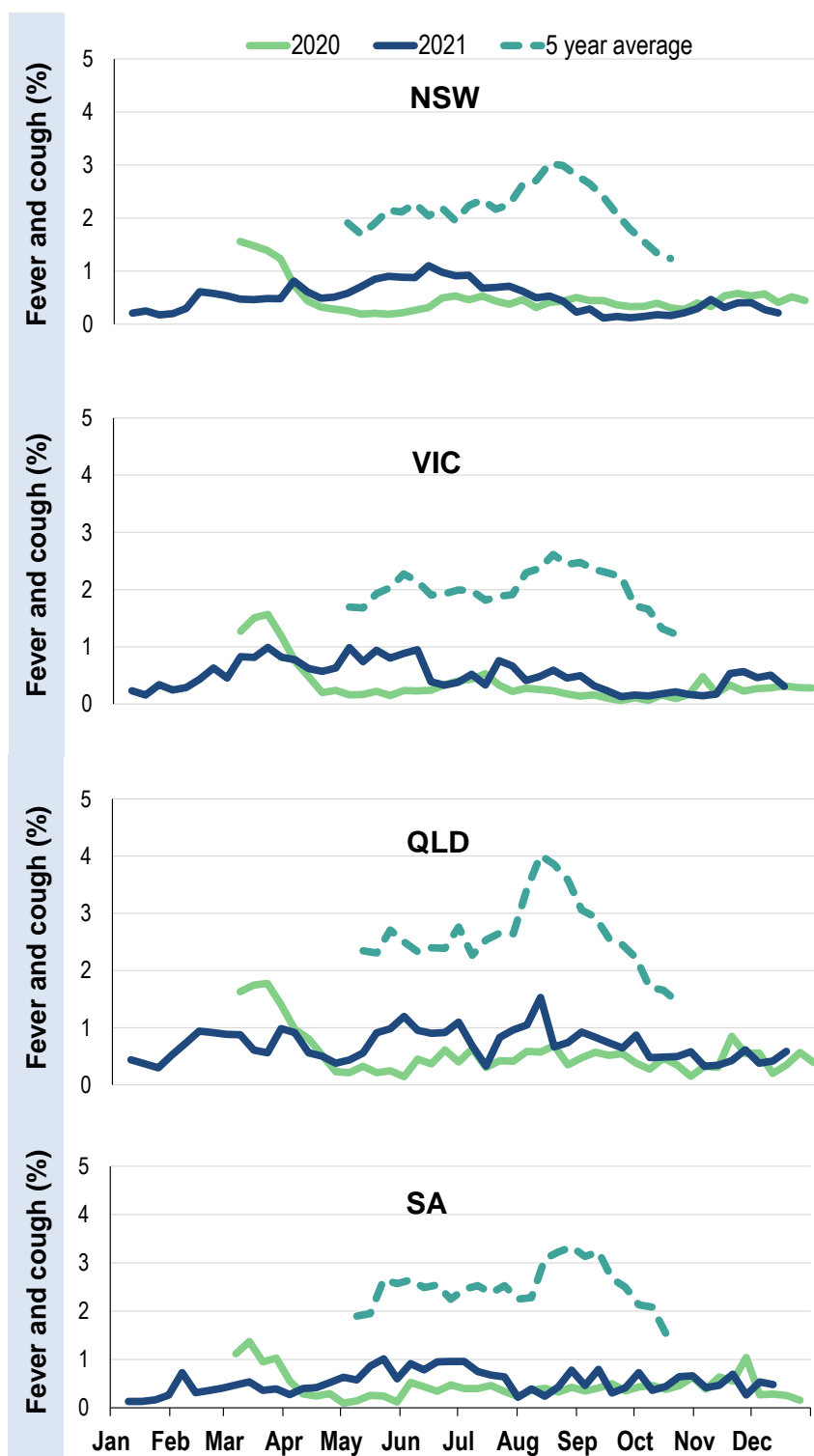
Fever, cough and absence from work or normal duties (Australia):



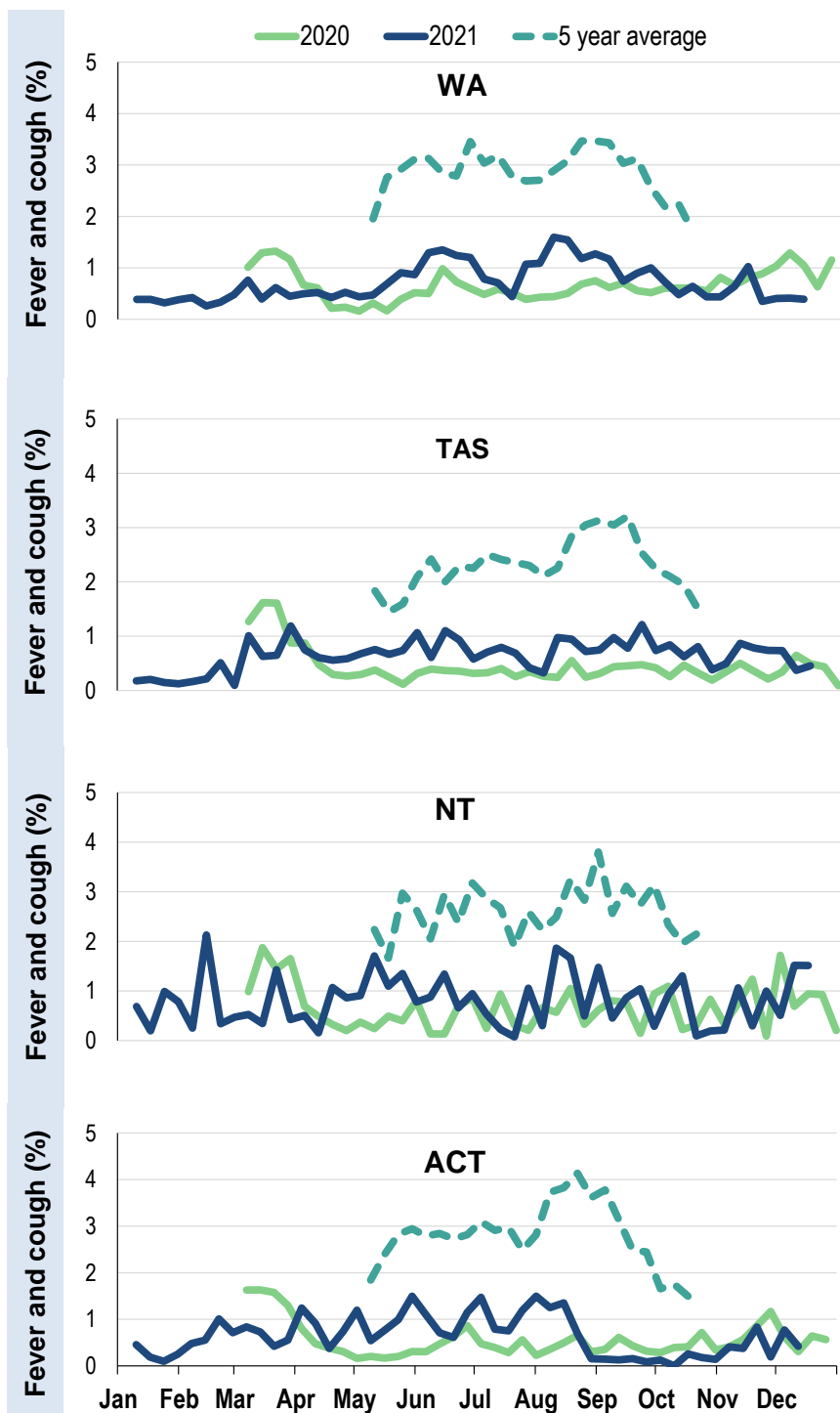
Influenza-like illness activity by age group in 2021 (Australia):



Influenza-like illness activity by state/territory (age standardised):



Influenza-like illness activity by state/territory (age standardised):

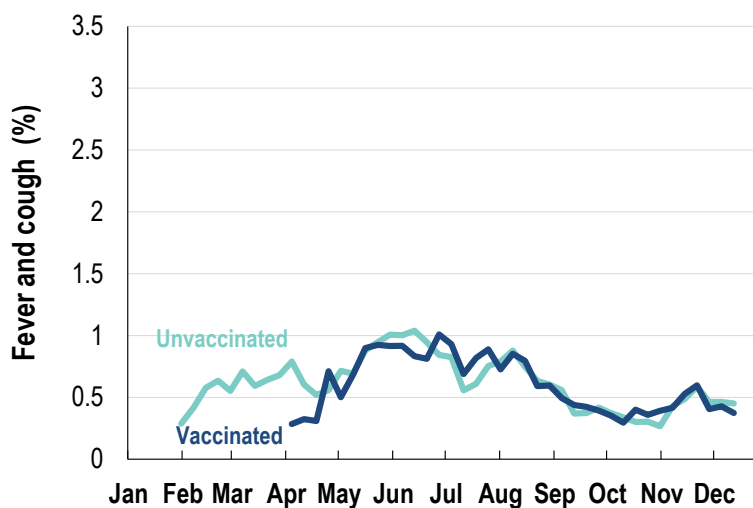


Participation:
42,569 participants (43,100 last week)

State	Participants	%	Rate/100,000 population
NSW	14828	34.8%	187.8
VIC	8307	19.5%	130.6
QLD	5089	12.0%	102.8
SA	3972	9.3%	230.0
WA	4215	9.9%	162.9
TAS	3017	7.1%	578.0
NT	811	1.9%	329.5
ACT	2330	5.5%	564.7
AUS	42569	100.0%	172.3

Vaccination rates:

Vaccinated participants:	COVID-19 vaccine			Influenza (%)
	At least 1 dose (%)	At least 2 doses (%)	3 doses (%)	
<5 years				57.2
5-17 years	50.7	48.6	0.4	39.1
18-64 years	98.8	98.1	15.8	73.7
65+ years	99.2	98.7	10.8	90.9
Working with patients	99.4	99.1	37.8	87.3
Aboriginal and/or Torres Strait Islander	83.8	83.4	11.5	65.6
Vaccinated overall (%)	94.0	93.3	12.7	76.5



* Data are age standardised in this chart

^ 2021 Influenza vaccination data not available until 04/04/21 due to low counts

