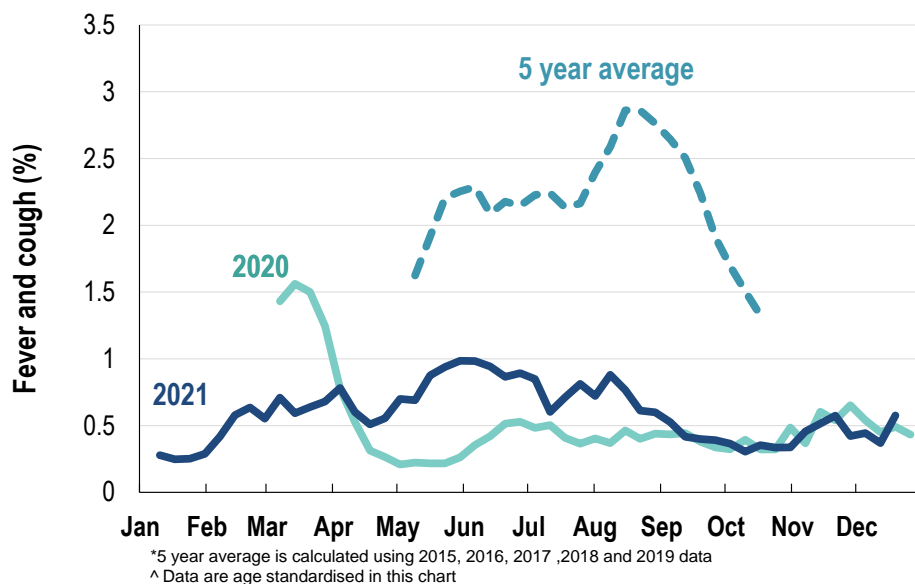


## This week influenza-like illness activity is low 41,800 participants this week

### Influenza-like illness activity\*:

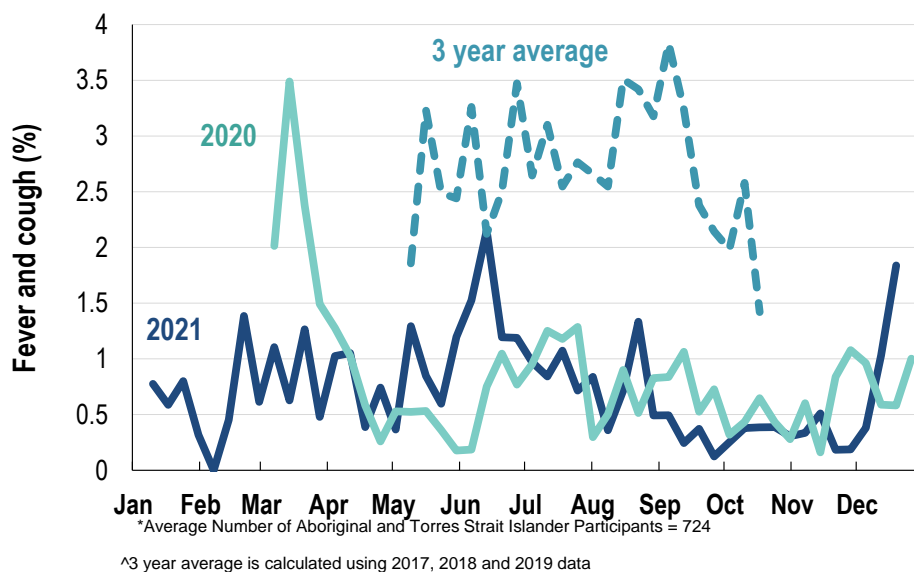
\*Influenza-like illness activity is defined as fever & cough for this report

**0.6% this week: flu-like illness activity is low**



### Influenza-like illness activity among Aboriginal and Torres Strait Islander participants

**1.8% this week: flu-like illness activity is low**



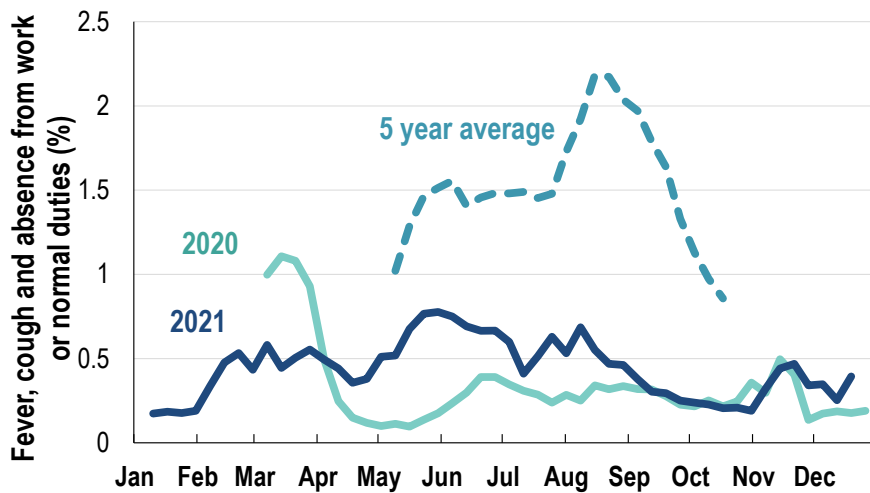
**Influenza-like illness severity:**
*58.7% of participants with fever and cough sought medical advice this week*

Influenza-like illness Severity	19 December 2021 number (%)	12 December 2021 number (%)
<b>Number of participants</b>	41800 (100%)	42570 (100%)
Fever & cough	179 (0.4%)	122 (0.3%)
Fever, cough & time-off normal duties	122 (0.3%)	79 (0.2%)
Fever, cough & 3 or more days off work/normal duties	122 (0.3%)	79 (0.2%)
<b>Number of participants with fever and cough</b>	179 (100%)	122 (100%)
*Sought medical advice for fever and cough	105 (58.7%)	80 (65.6%)
Admitted to hospital	3 (1.7%)	3 (2.5%)
Tested for influenza	11 (6.1%)	15 (12.3%)
Tested, result positive for influenza	0 (0%)	0 (0%)
^Tested for coronavirus (COVID-19)	98 (54.7%)	72 (59%)
^Tested, result positive for coronavirus (COVID-19)	14 (7.8%)	10 (8.2%)

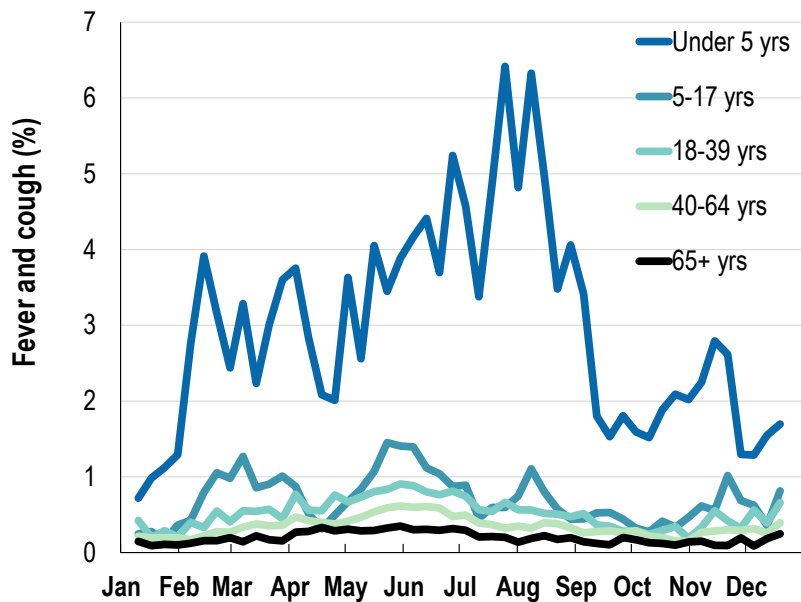
\*Includes those who sought medical advice from a general practitioner, COVID-19 clinic, emergency department, or were admitted to hospital for fever & cough

^Includes reported PCR tests (currently excludes reports of Rapid Antigen Tests)

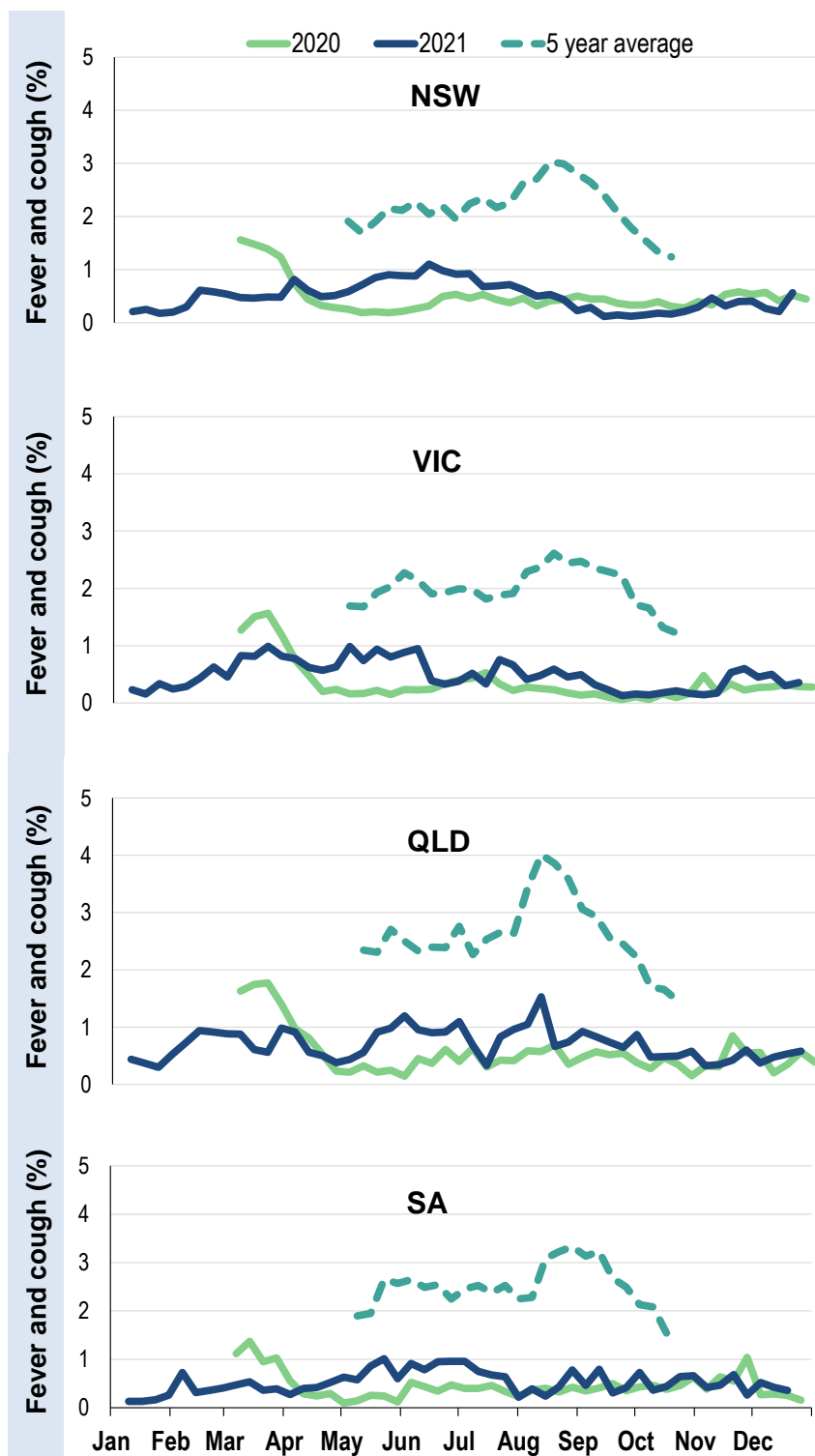
**Fever, cough and absence from work or normal duties (Australia):**



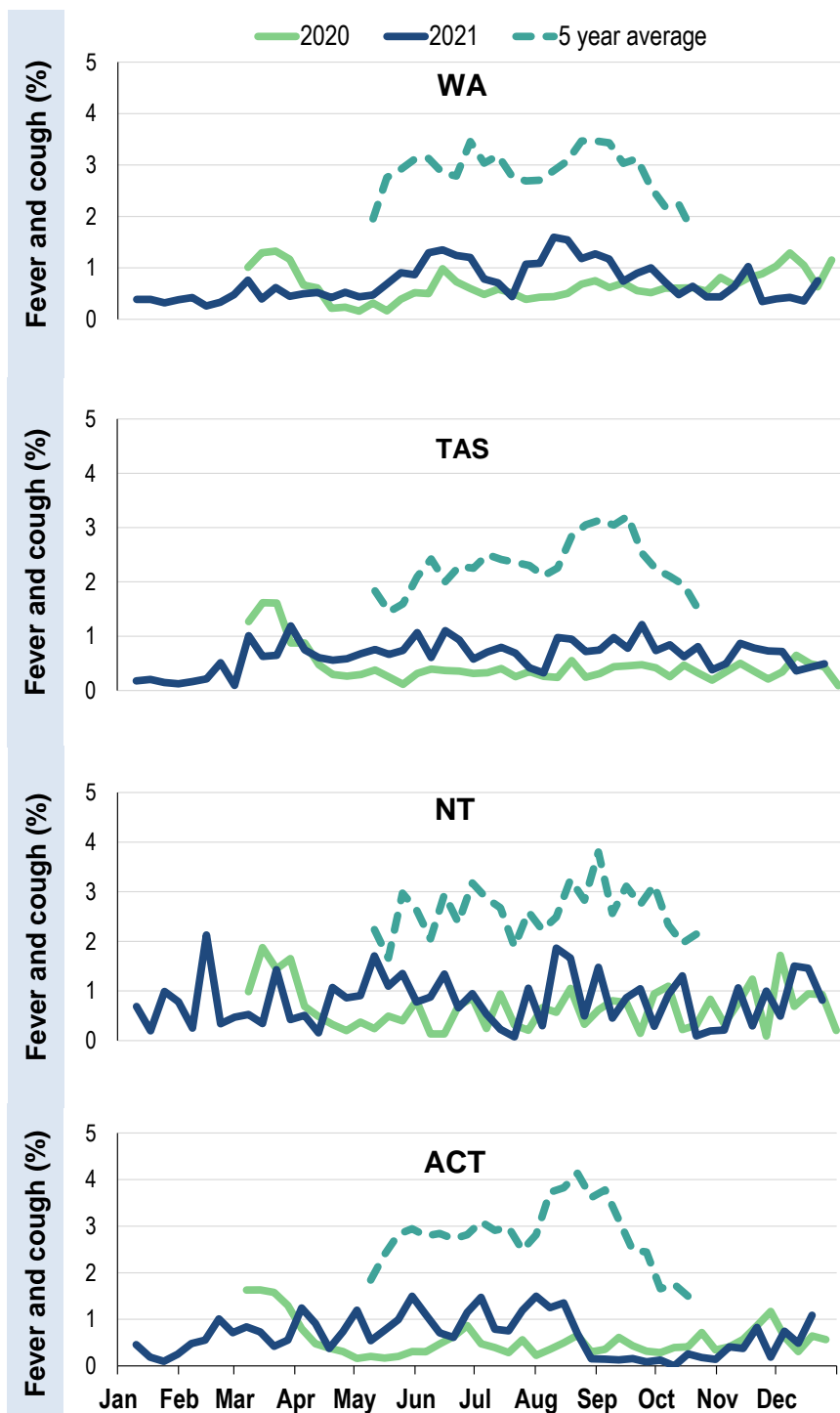
**Influenza-like illness activity by age group in 2021 (Australia):**



**Influenza-like illness activity by state/territory (age standardised):**



**Influenza-like illness activity by state/territory (age standardised):**

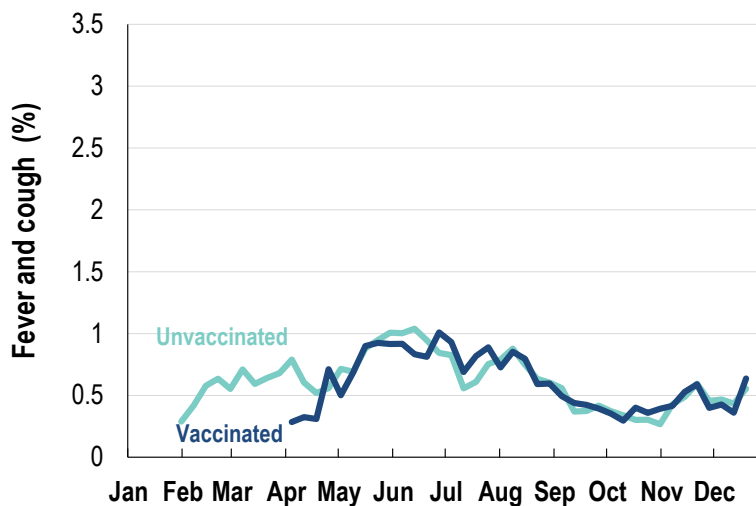


**Participation:**
**41,800 participants (42,570 last week)**

State	Participants	%	Rate/100,000 population
NSW	14442	34.6%	182.9
VIC	8212	19.6%	129.1
QLD	5157	12.3%	104.2
SA	3811	9.1%	220.7
WA	4159	9.9%	160.8
TAS	2984	7.1%	571.6
NT	747	1.8%	303.5
ACT	2288	5.5%	554.5
AUS	41800	100.0%	169.2

**Vaccination rates:**

Vaccinated participants:	COVID-19 vaccine			Influenza (%)
	At least 1 dose (%)	At least 2 doses (%)	3 doses (%)	
<5 years				61.2
5-17 years	50.7	48.4	0.3	39.4
18-64 years	99.0	98.2	26.5	73.8
65+ years	99.2	98.8	27.2	90.9
Working with patients	99.5	99.0	53.3	87.5
Aboriginal and/or Torres Strait Islander	84.6	83.7	17.0	65.3
<b>Vaccinated overall (%)</b>	<b>94.1</b>	<b>93.3</b>	<b>24.4</b>	<b>76.8</b>



\* Data are age standardised in this chart

^ 2021 Influenza vaccination data not available until 04/04/21 due to low counts

