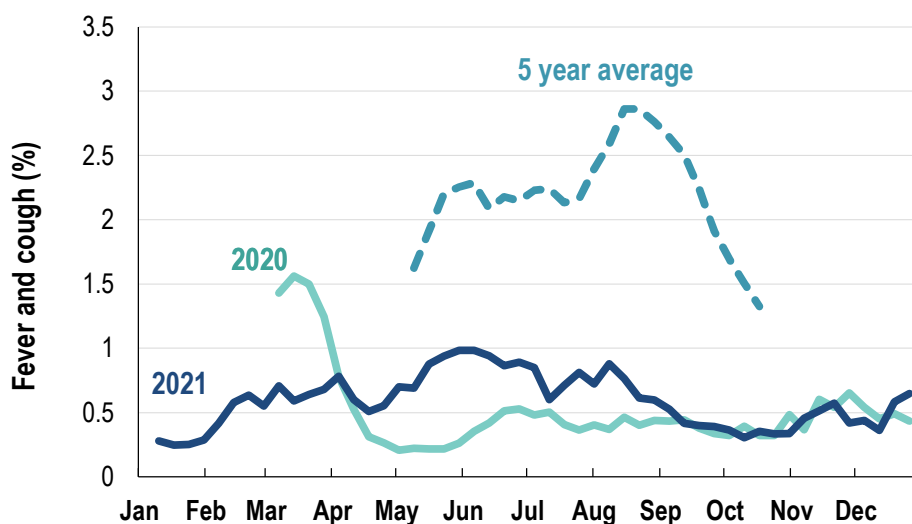


This week influenza-like illness activity is low 34,416 participants this week

Influenza-like illness activity*:

*Influenza-like illness activity is defined as fever & cough for this report

0.6% this week: flu-like illness activity is low

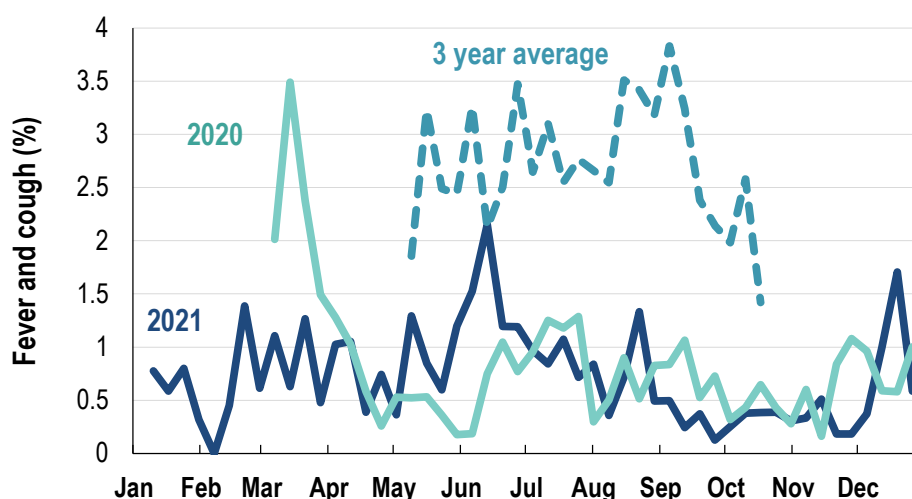


*5 year average is calculated using 2015, 2016, 2017, 2018 and 2019 data

^ Data are age standardised in this chart

Influenza-like illness activity among Aboriginal and Torres Strait Islander participants

0.6% this week: flu-like illness activity is low



*Average Number of Aboriginal and Torres Strait Islander Participants = 718

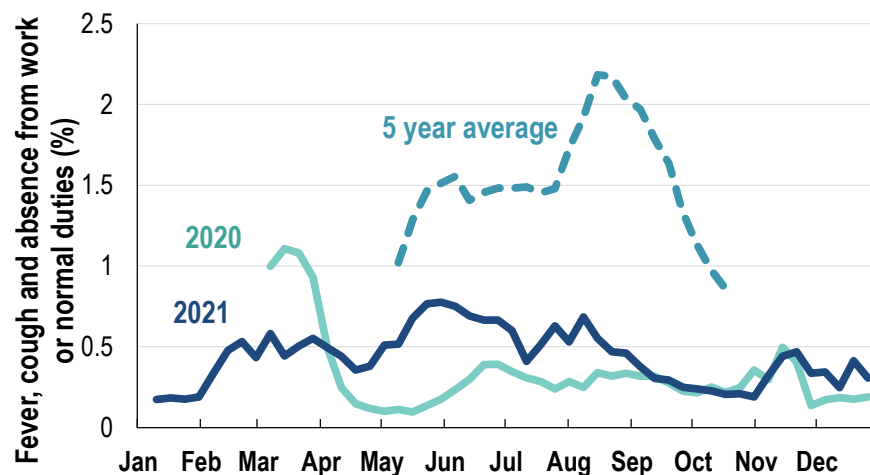
^3 year average is calculated using 2017, 2018 and 2019 data

| Influenza-like illness severity: <i>55.9% of participants with fever and cough sought medical advice this week</i> | | |
|--|---|---|
| Influenza-like illness Severity | Week ending 26 December number (%) | Week ending 19 December number (%) |
| Number of participants | 34416 (100%) | 40873 (100%) |
| Fever & cough | 145 (0.4%) | 172 (0.4%) |
| Fever, cough & time-off normal duties | 79 (0.2%) | 118 (0.3%) |
| Fever, cough & 3 or more days off work/normal duties | 79 (0.2%) | 118 (0.3%) |
| Number of participants with fever and cough | 145 (100%) | 172 (100%) |
| *Sought medical advice for fever and cough | 81 (55.9%) | 105 (61%) |
| Admitted to hospital | 7 (4.8%) | 2 (1.2%) |
| Tested for influenza | 5 (3.4%) | 14 (8.1%) |
| Tested, result positive for influenza | 0 (0%) | 0 (0%) |
| ^Tested for coronavirus (COVID-19) | 74 (51%) | 109 (63.4%) |
| ^Tested, result positive for coronavirus (COVID-19) | 29 (20%) | 17 (9.9%) |

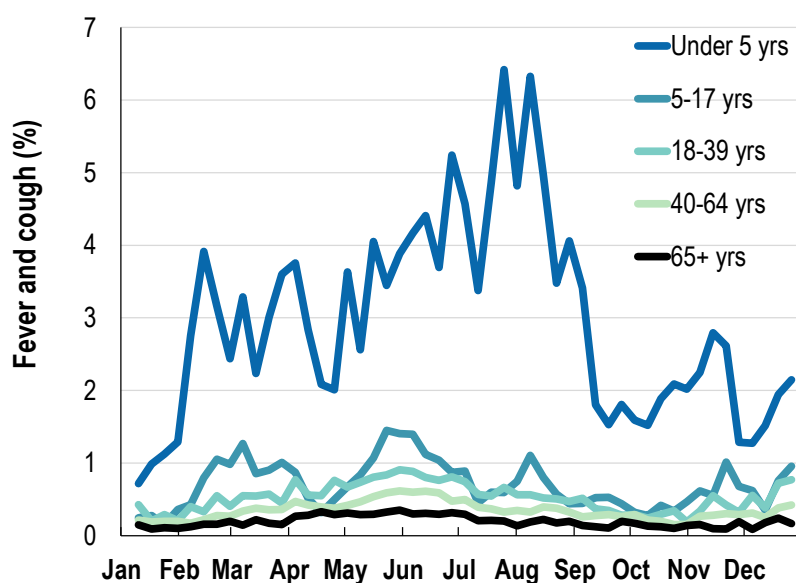
*Includes those who sought medical advice from a general practitioner, COVID-19 clinic, emergency department, or were admitted to hospital for fever & cough

^Includes reported PCR tests (currently excludes reports of Rapid Antigen Tests)

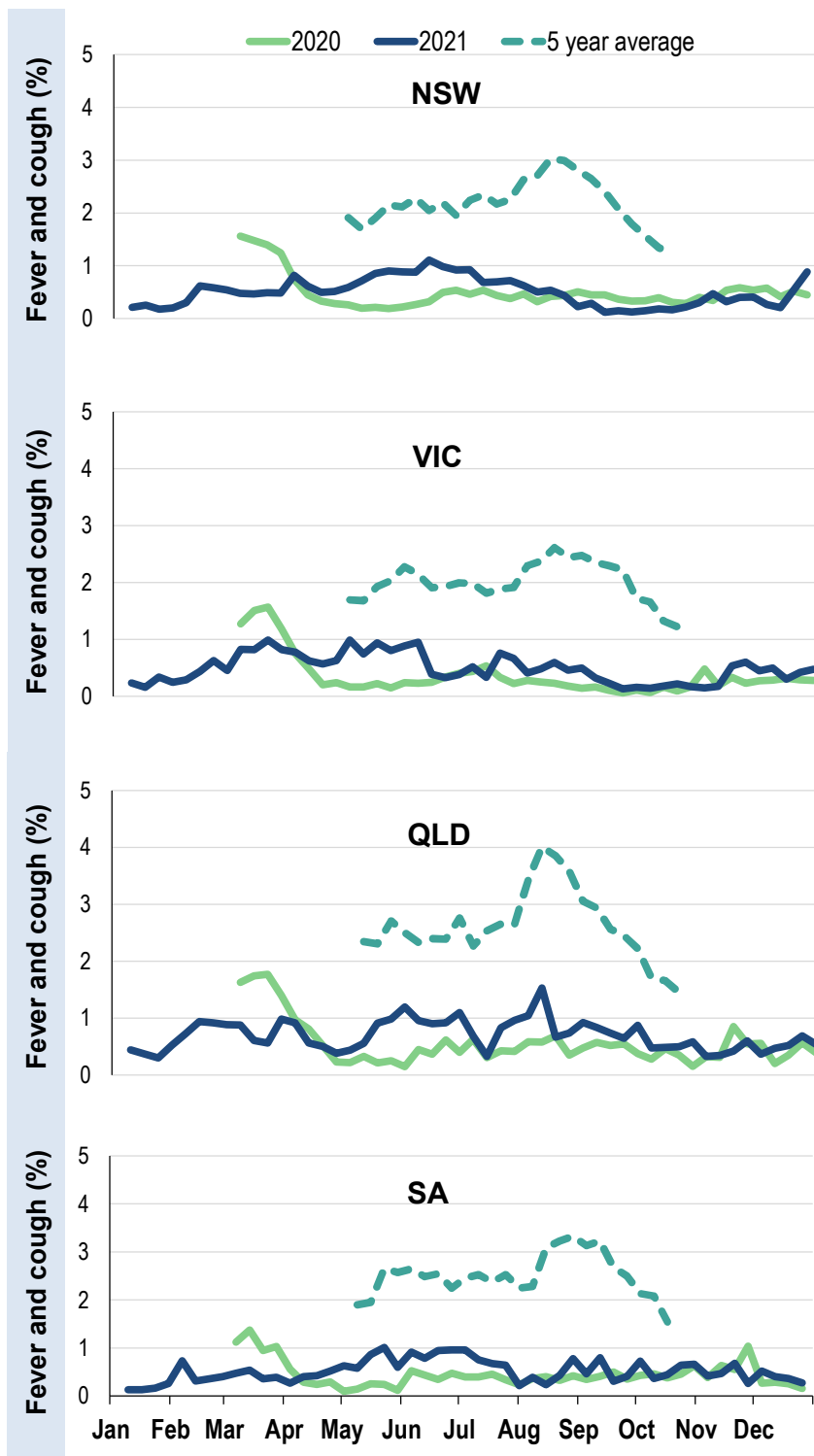
Fever, cough and absence from work or normal duties (Australia):



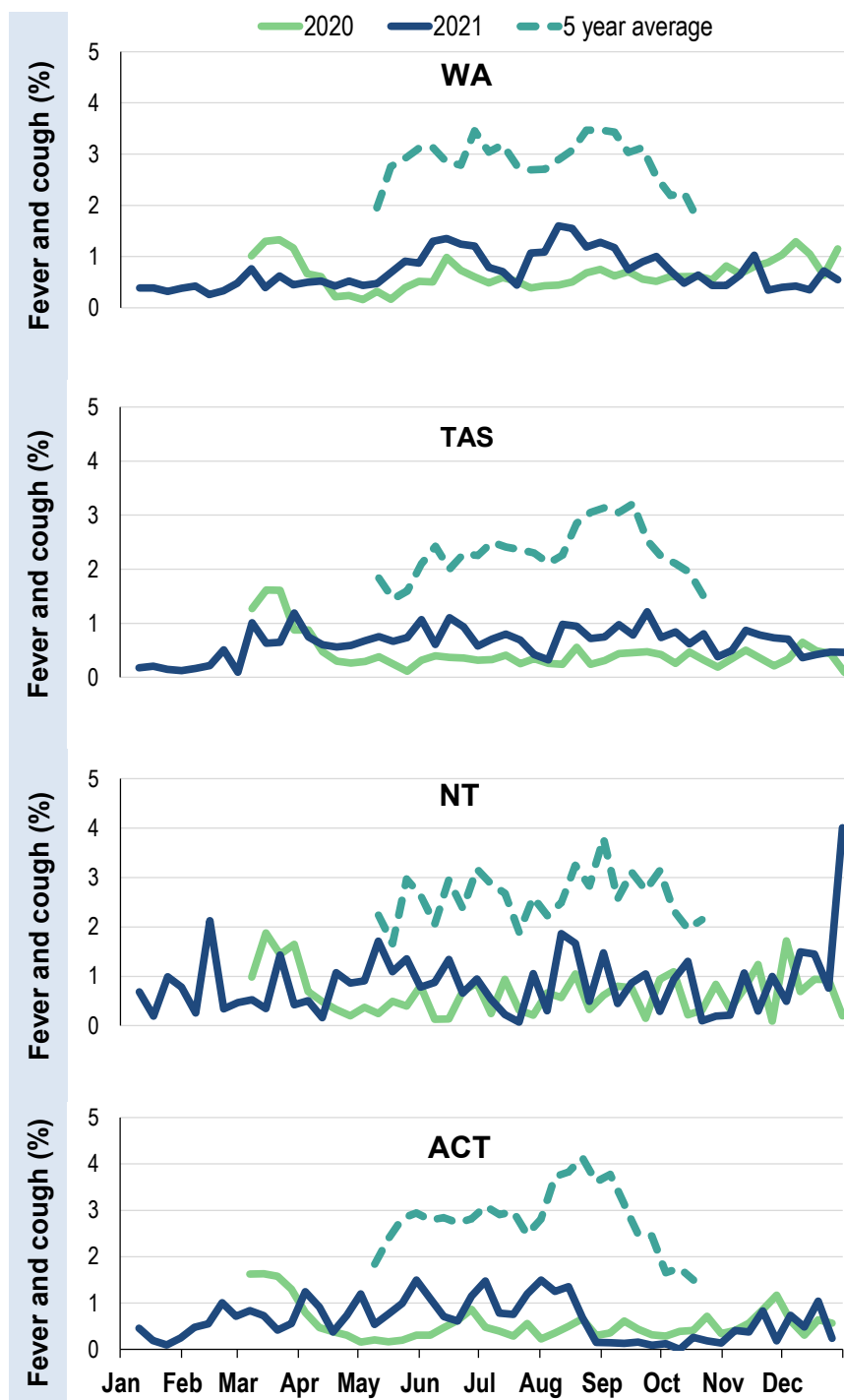
Influenza-like illness activity by age group in 2021 (Australia):



Influenza-like illness activity by state/territory (age standardised):



Influenza-like illness activity by state/territory (age standardised):

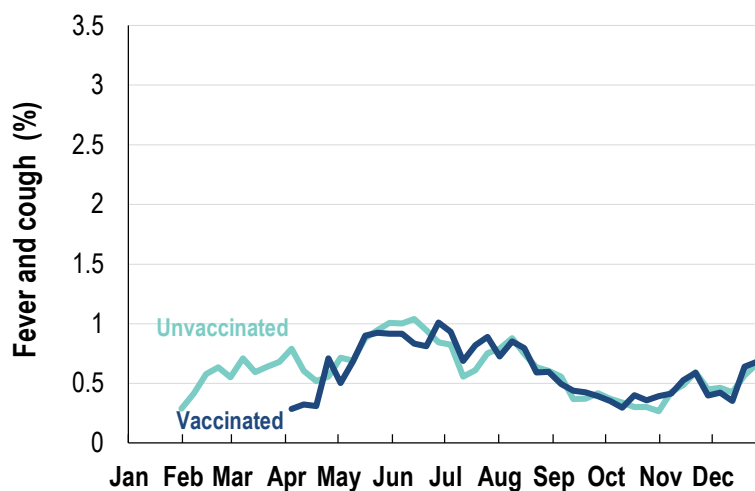


Participation:
34,416 participants (40,873 last week)

| State | Participants | % Rate/100,000 population |
|-------|--------------|---------------------------|
| NSW | 12334 | 35.8% 156.2 |
| VIC | 7066 | 20.5% 111.1 |
| QLD | 4551 | 13.2% 92.0 |
| SA | 3018 | 8.8% 174.8 |
| WA | 2865 | 8.3% 110.7 |
| TAS | 2196 | 6.4% 420.7 |
| NT | 457 | 1.3% 185.7 |
| ACT | 1929 | 5.6% 467.5 |
| AUS | 34416 | 100.0% 139.3 |

Vaccination rates:

| Vaccinated participants: | COVID-19 vaccine | | | Influenza (%) |
|--|---------------------|----------------------|-------------|---------------|
| | At least 1 dose (%) | At least 2 doses (%) | 3 doses (%) | |
| <5 years | | | | 63.2 |
| 5-17 years | 50.3 | 48.7 | 0.4 | 41.0 |
| 18-64 years | 99.1 | 98.2 | 35.3 | 74.6 |
| 65+ years | 99.2 | 98.8 | 39.9 | 91.3 |
| Working with patients | 99.4 | 98.9 | 62.5 | 87.9 |
| Aboriginal and/or Torres Strait Islander | 86.2 | 82.9 | 26.5 | 70.3 |
| Vaccinated overall (%) | 94.7 | 93.9 | 34.3 | 78.6 |



* Data are age standardised in this chart

^ 2021 Influenza vaccination data not available until 04/04/21 due to low counts

