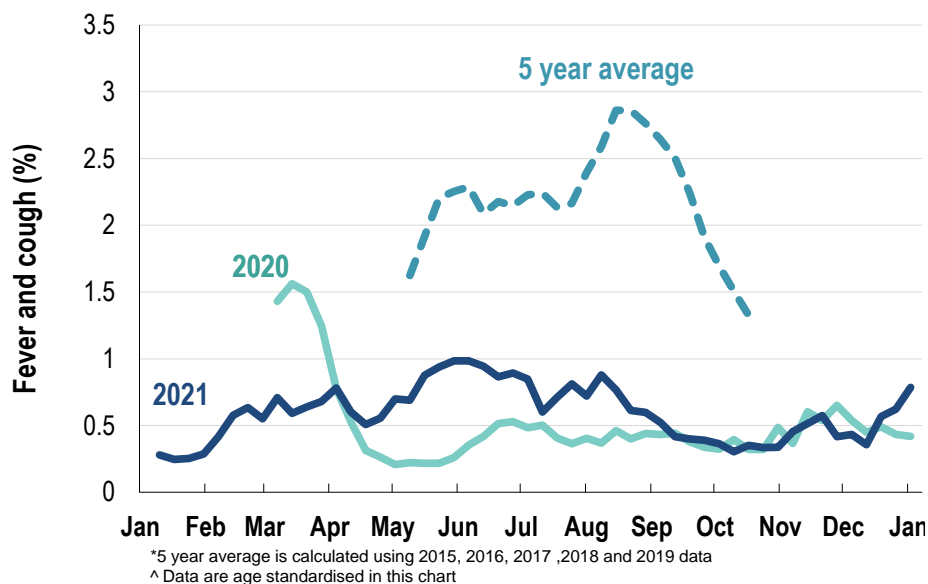


**This week influenza-like illness activity is low**  
**35,366 participants this week**

**Influenza-like illness activity\*:**

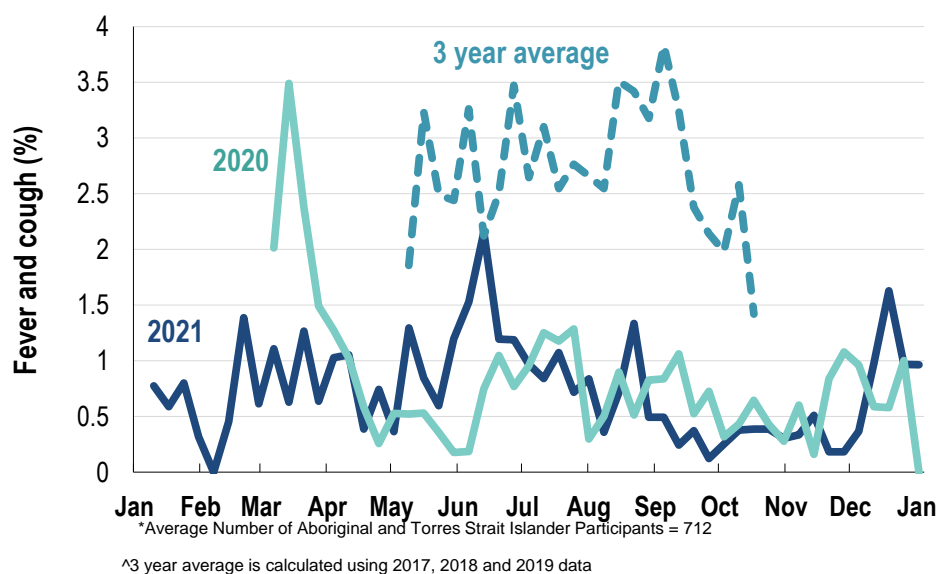
\*Influenza-like illness activity is defined as fever & cough for this report

**0.8% this week: flu-like illness activity is low**



**Influenza-like illness activity among Aboriginal and Torres Strait Islander participants**

**1% this week: flu-like illness activity is low**

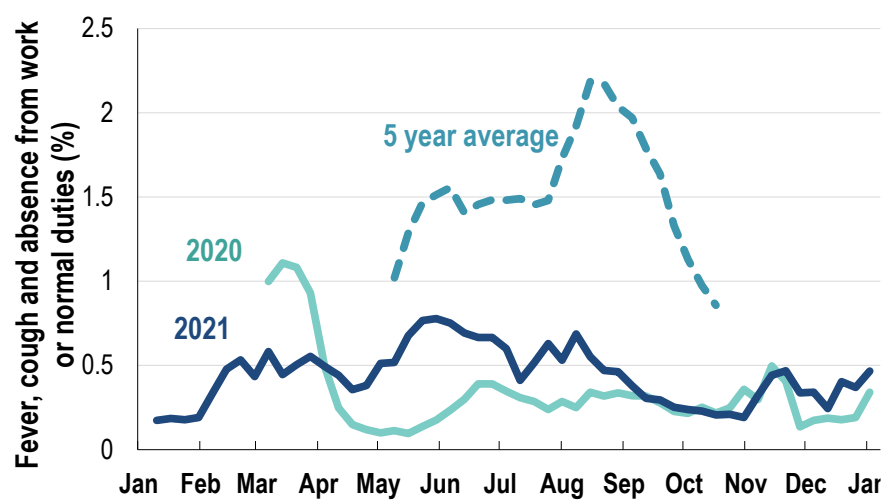


Influenza-like illness severity: 53.9% of participants with fever and cough sought medical advice this week		
Influenza-like illness Severity	Week ending 02 January 2022 number (%)	Week ending 26 December 2021 number (%)
Number of participants	35366 (100%)	31205 (100%)
Fever & cough	254 (0.7%)	134 (0.4%)
Fever, cough & time-off normal duties	144 (0.4%)	82 (0.3%)
Fever, cough & 3 or more days off work/normal duties	144 (0.4%)	82 (0.3%)
Number of participants with fever and cough	254 (100%)	134 (100%)
*Sought medical advice for fever and cough	137 (53.9%)	80 (59.7%)
Admitted to hospital	3 (1.2%)	6 (4.5%)
Tested for influenza	12 (4.7%)	7 (5.2%)
Tested, result positive for influenza	1 (0.4%)	0 (0%)
^Tested for coronavirus (COVID-19)	128 (50.4%)	85 (63.4%)
^Tested, result positive for coronavirus (COVID-19)	70 (27.6%)	37 (27.6%)

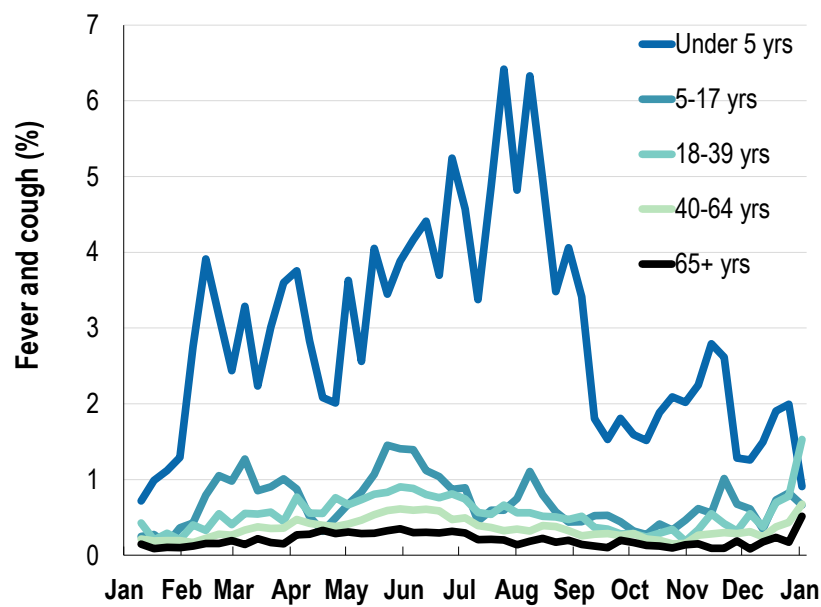
\*Includes those who sought medical advice from a general practitioner, COVID-19 clinic, emergency department, or were admitted to hospital for fever & cough

^Includes reported PCR tests (currently excludes reports of Rapid Antigen Tests)

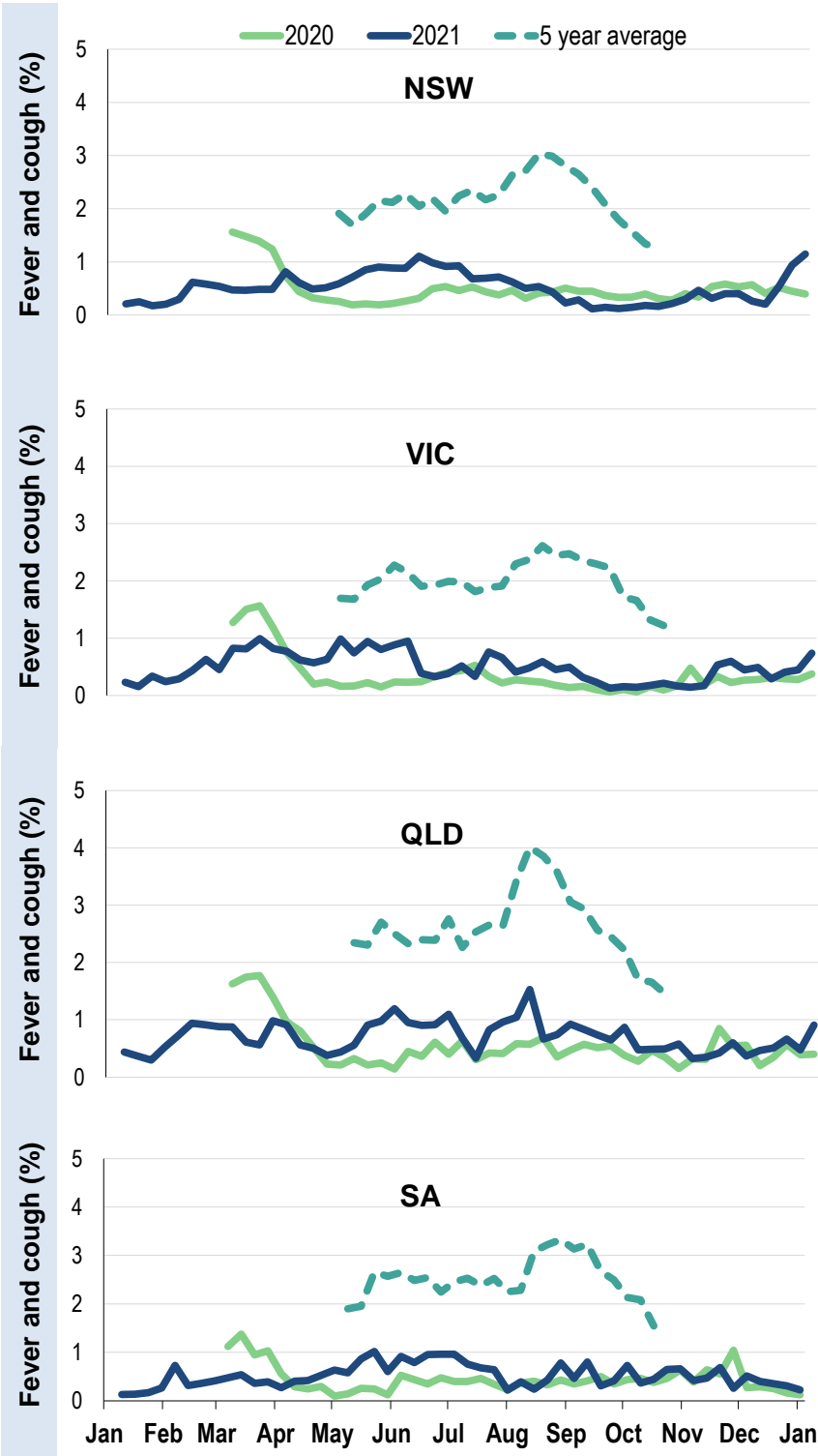
Fever, cough and absence from work or normal duties (Australia):



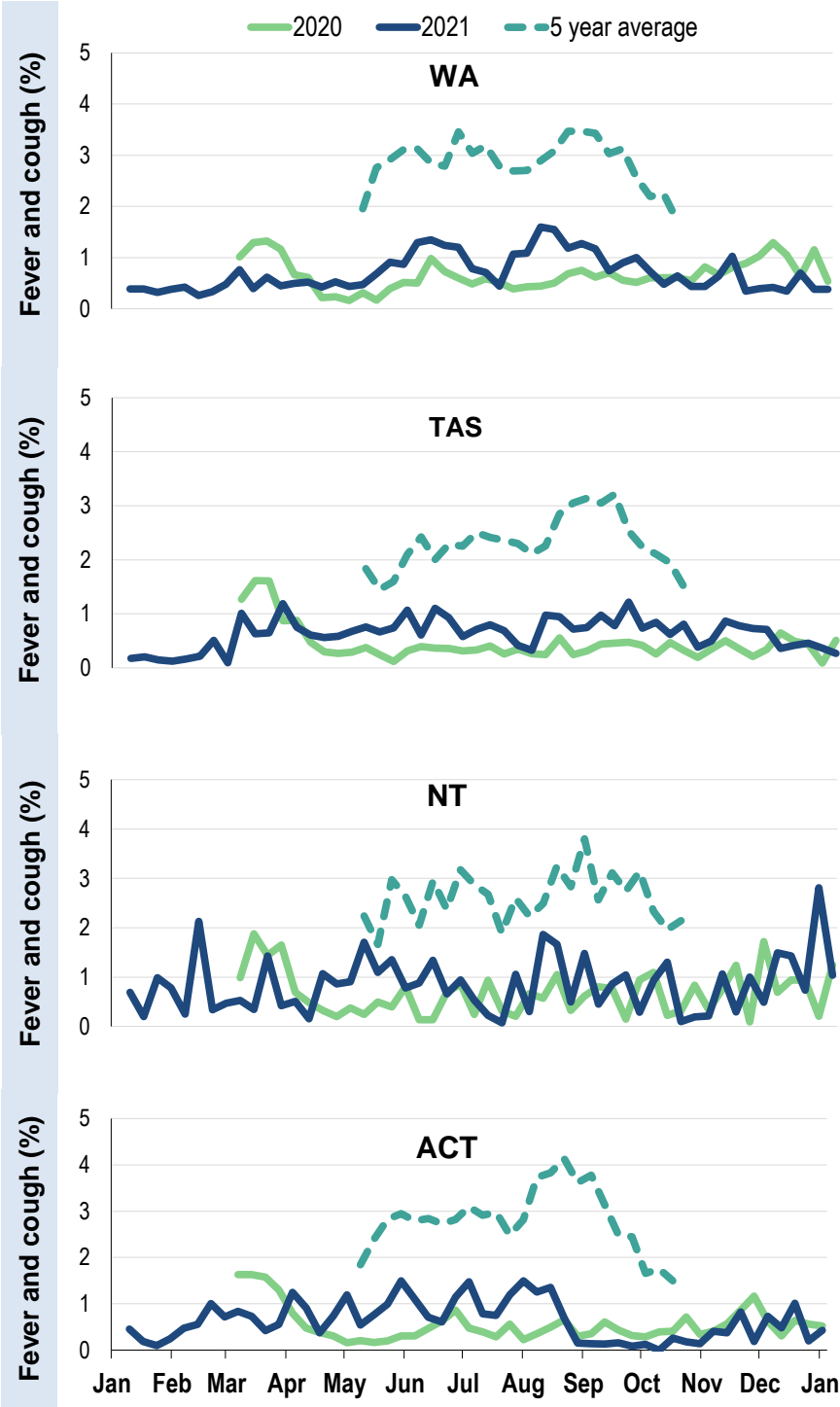
Influenza-like illness activity by age group in 2021 (Australia):



Influenza-like illness activity by state/territory (age standardised):



Influenza-like illness activity by state/territory (age standardised):



## Participation:

35,366 participants (31,205 last week)

State	Participants	%	Rate/100,000 population
NSW	12598	35.6%	159.6
VIC	7230	20.4%	113.7
QLD	4682	13.2%	94.6
SA	3085	8.7%	178.6
WA	2975	8.4%	115.0
TAS	2304	6.5%	441.4
NT	457	1.3%	185.7
ACT	2035	5.8%	493.2
AUS	35366	100.0%	143.2

## Vaccination rates:

Vaccinated participants:	COVID-19 vaccine			Influenza (%)
	At least 1 dose (%)	At least 2 doses (%)	3 doses (%)	
<5 years				0.0
5-17 years	49.9	47.0	0.6	0.0
18-64 years	99.1	97.6	40.0	0.0
65+ years	99.3	98.4	46.4	0.0
Working with patients	99.5	98.3	65.9	0.0
Aboriginal and/or Torres Strait Islander	87.8	86.2	29.6	0.0
<b>Vaccinated overall (%)</b>	<b>94.6</b>	<b>93.2</b>	<b>39.3</b>	<b>0.0</b>



**FluTracking**  
Tracking COVID-19