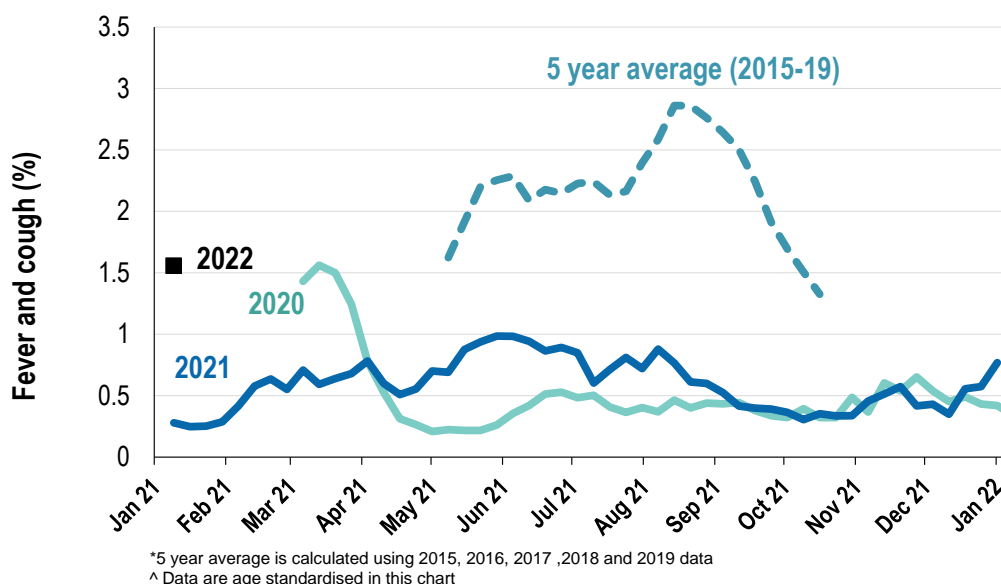


## This week influenza-like illness activity is low 57,531 participants this week

### Influenza-like illness activity\*:

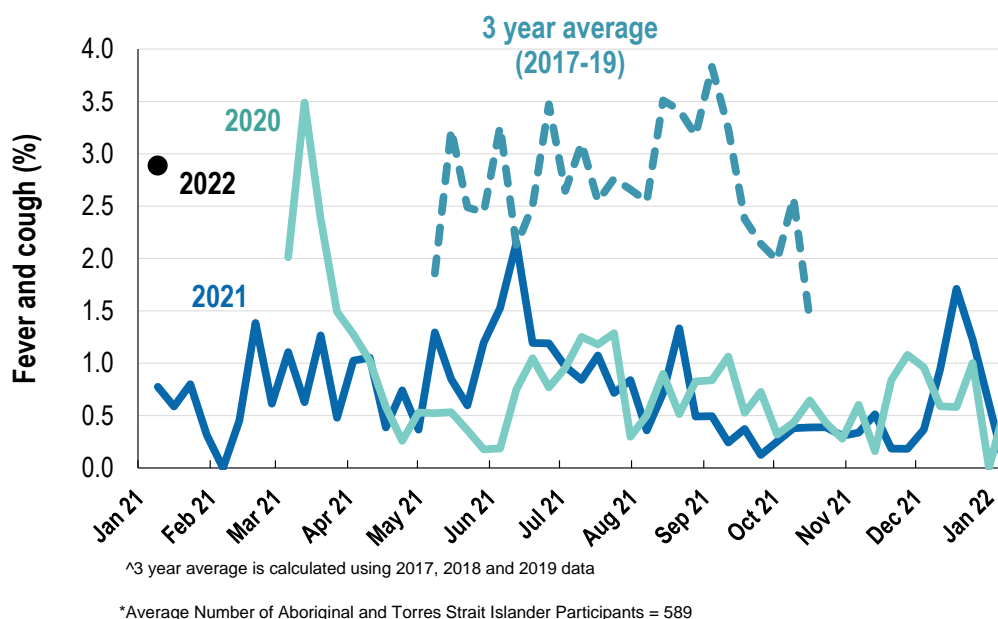
\*Influenza-like illness activity is defined as fever & cough for this report

**1.6% this week: flu-like illness activity is low**



### Influenza-like illness activity among Aboriginal and Torres Strait Islander participants

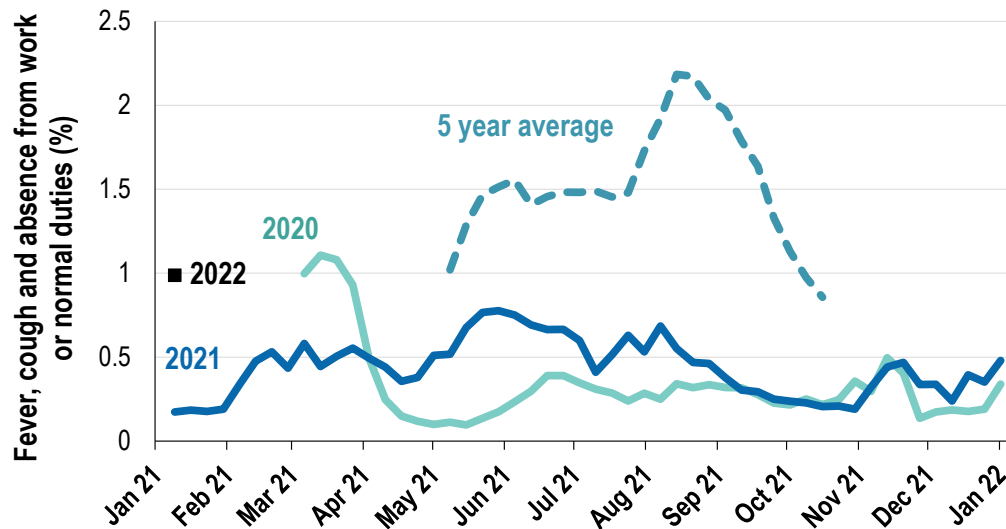
**2.9% this week: flu-like illness activity is moderate**



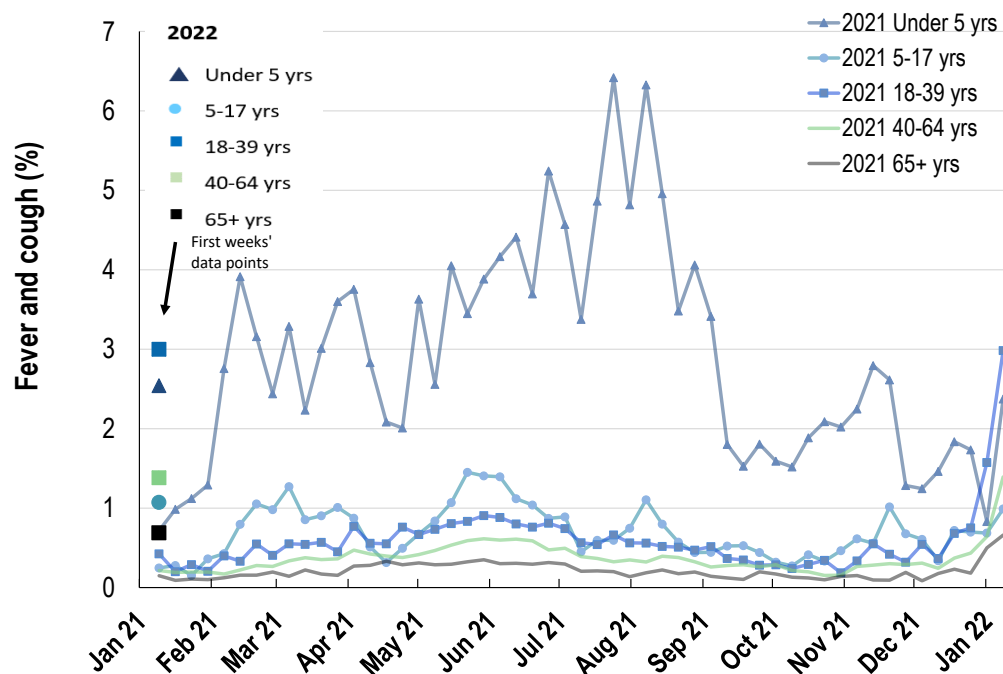
<b>Influenza-like illness severity:</b> <i>55.2% of participants with fever and cough sought medical advice this week</i>		
Influenza-like illness Severity	Week ending 09 January 2022 number (%)	Week ending 02 January 2022 number (%)
<b>Number of participants</b>	57531 (100%)	41396 (100%)
Fever & cough	782 (1.4%)	294 (0.7%)
Fever, cough & time-off normal duties	506 (0.9%)	179 (0.4%)
Fever, cough & 3 or more days off work/normal duties	506 (0.9%)	179 (0.4%)
<b>Number of participants with fever and cough</b>	782 (100%)	294 (100%)
*Sought medical advice for fever and cough	432 (55.2%)	177 (60.2%)
Admitted to hospital	4 (0.5%)	5 (1.7%)
Tested for influenza	28 (3.6%)	14 (4.8%)
Tested, result positive for influenza	2 (0.3%)	1 (0.3%)
Tested for COVID-19 by PCR	355 (45.4%)	194 (66%)
Tested for COVID-19 by PCR, result positive	241 (30.8%)	117 (39.8%)
Tested for COVID-19 by RAT	384 (49.1%)	160 (54.4%)
Tested for COVID-19 by RAT, result positive	247 (31.6%)	87 (29.6%)

\*Includes those who sought medical advice from a general practitioner, COVID-19 clinic, emergency department, or were admitted to hospital for fever & cough

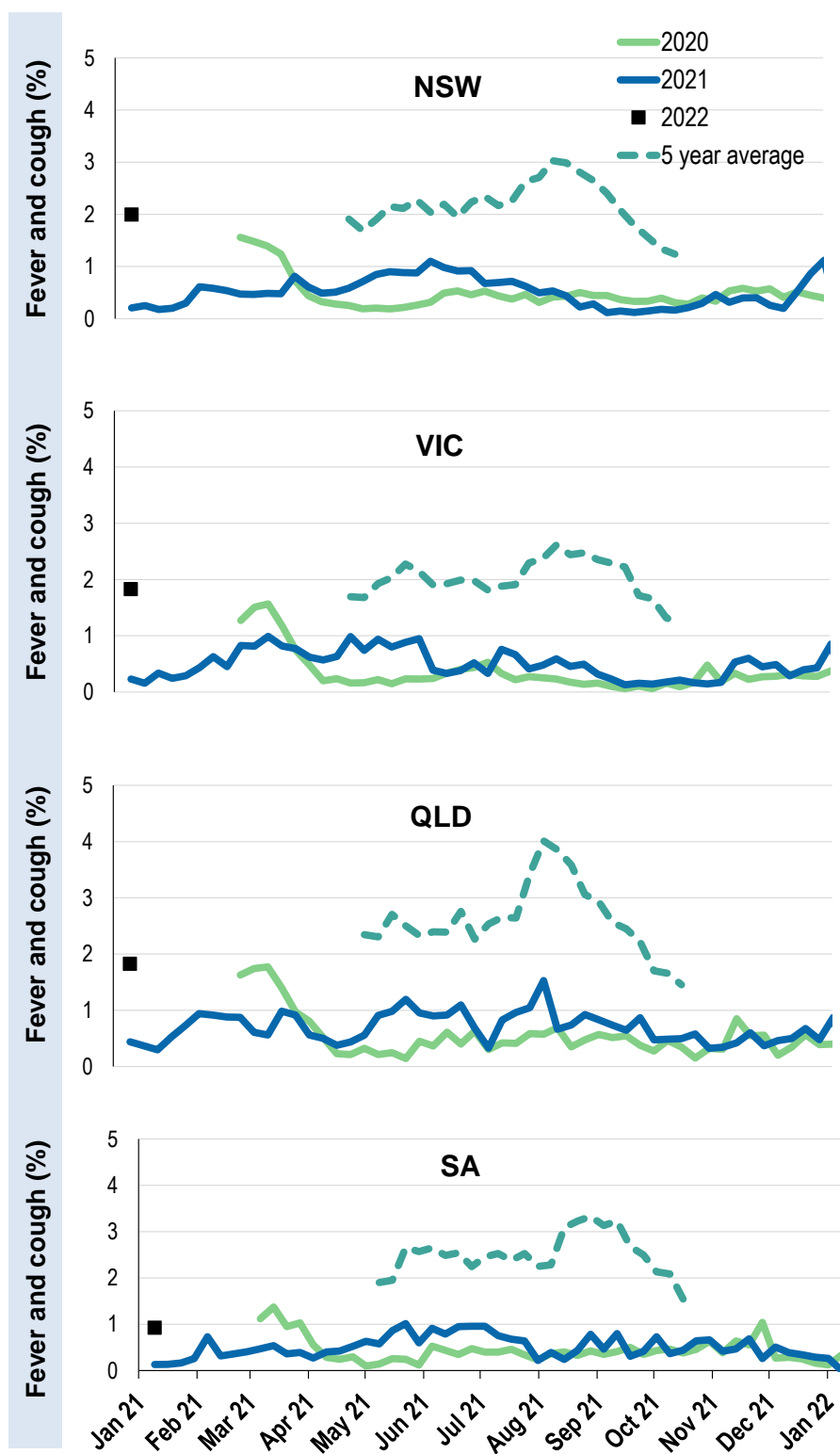
**Fever, cough and absence from work or normal duties (Australia):**



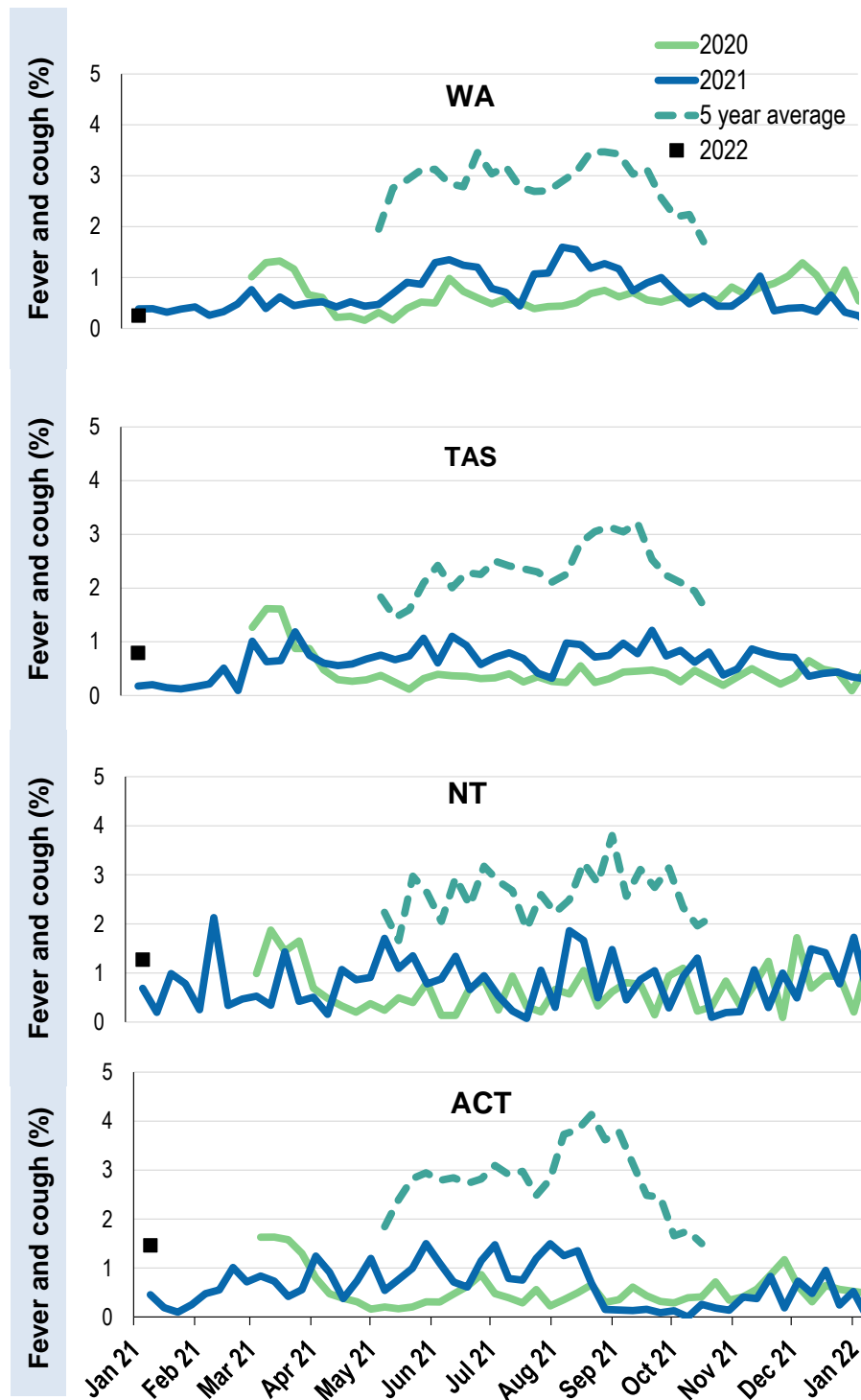
**Influenza-like illness activity by age group in 2022 (Australia):**



Influenza-like illness activity by state/territory (age standardised):



Influenza-like illness activity by state/territory (age standardised):



**Participation:**
**57,531 participants (41,396 last week)**

State	Participants	%	Rate/100,000 population
NSW	20048	34.8%	<b>253.9</b>
VIC	11483	20.0%	<b>180.6</b>
QLD	7288	12.7%	<b>147.3</b>
SA	5115	8.9%	<b>296.2</b>
WA	5719	9.9%	<b>221.1</b>
TAS	3650	6.3%	<b>699.2</b>
NT	909	1.6%	<b>369.4</b>
ACT	3319	5.8%	<b>804.4</b>
AUS	57531	100.0%	<b>232.9</b>

**Vaccination rates:**

Vaccinated participants:	COVID-19 vaccine			Influenza (%)*
	At least 1 dose (%)	At least 2 doses (%)	3 doses (%)	
<5 years				0.0
5-17 years	48.4	45.0	0.6	0.0
18-64 years	99.0	97.9	50.4	0.0
65+ years	99.3	98.8	60.5	0.0
Working with patients	99.5	98.8	72.9	0.0
Aboriginal and/or Torres Strait Islander	85.4	83.7	34.1	0.0
<b>Vaccinated overall (%)</b>	<b>93.6</b>	<b>92.5</b>	<b>49.1</b>	<b>0.0</b>

\*Influenza vaccination data is excluded until the 2022 influenza vaccine is released in Australia

