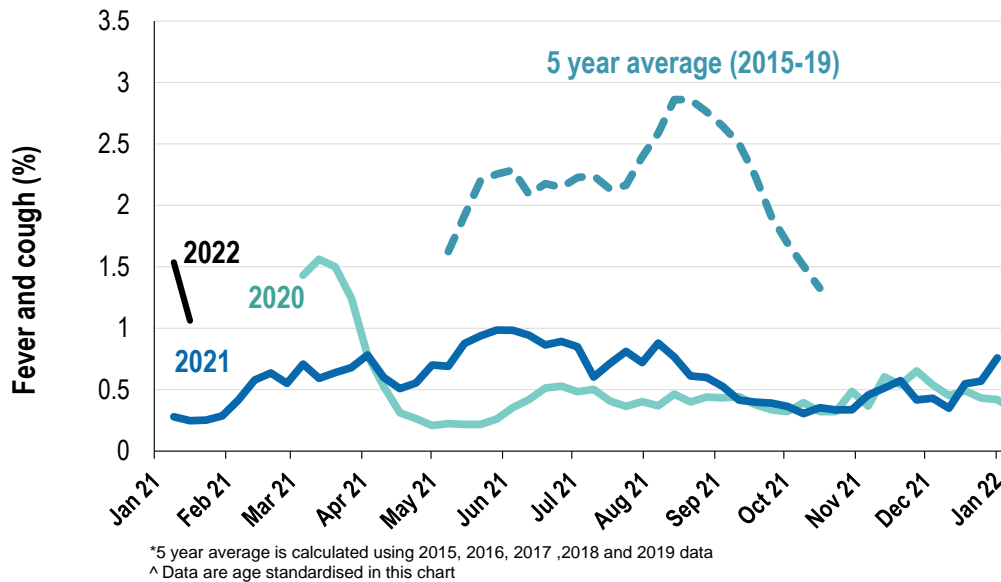


This week influenza-like illness activity is low 57,854 participants this week

Influenza-like illness activity*:

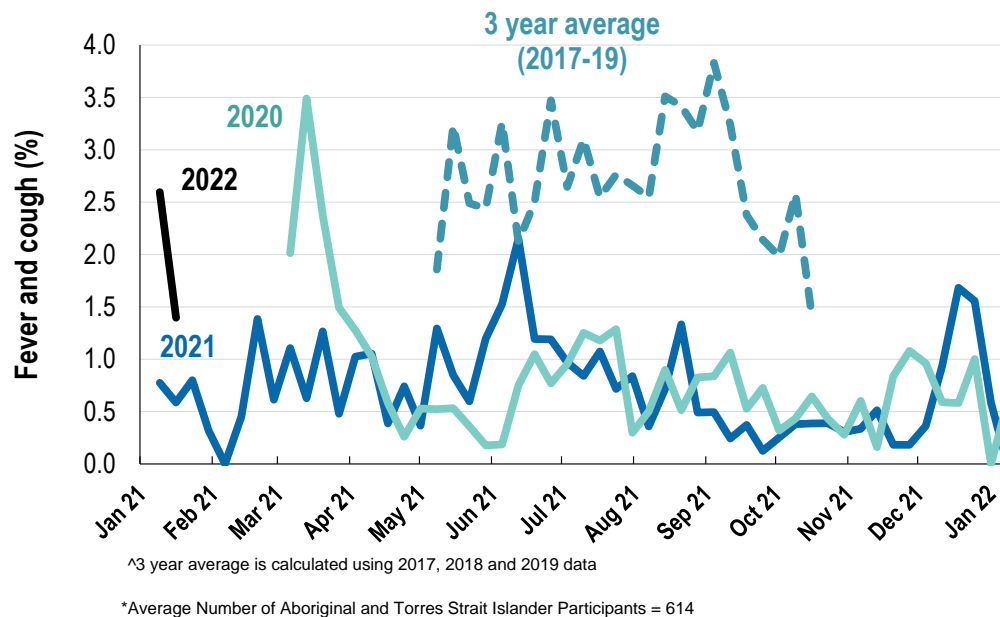
*Influenza-like illness activity is defined as fever & cough for this report

1.1% this week: flu-like illness activity is low



Influenza-like illness activity among Aboriginal and Torres Strait Islander participants

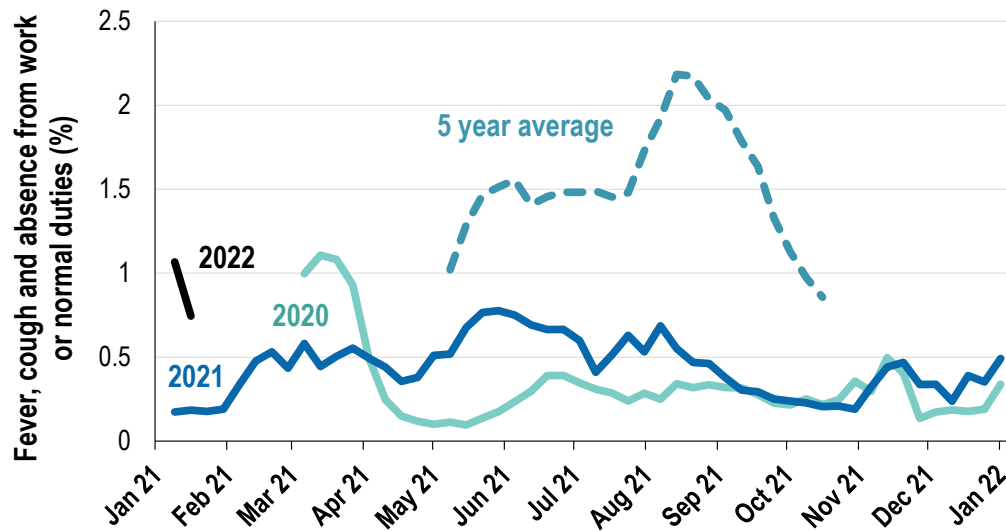
1.4% this week: flu-like illness activity is low



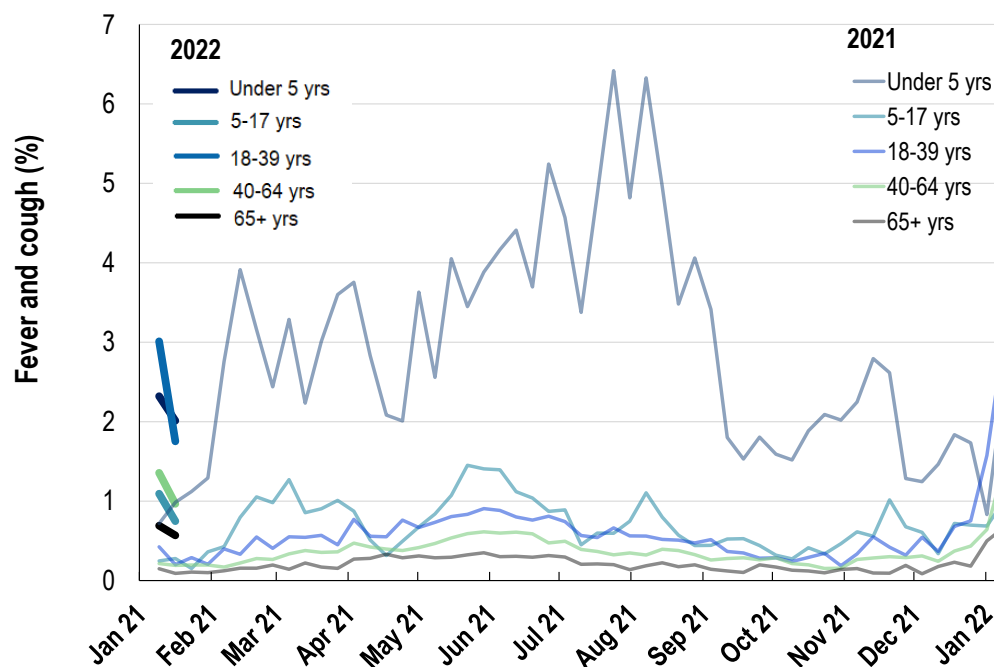
Influenza-like illness severity: <i>49% of participants with fever and cough sought medical advice this week</i>		
Influenza-like illness Severity	Week ending 16 January 2022 number (%)	Week ending 09 January 2022 number (%)
Number of participants	57854 (100%)	57531 (100%)
Fever & cough	541 (0.9%)	782 (1.4%)
Fever, cough & time-off normal duties	377 (0.7%)	541 (0.9%)
Fever, cough & 3 or more days off work/normal duties	377 (0.7%)	541 (0.9%)
Number of participants with fever and cough	541 (100%)	782 (100%)
*Sought medical advice for fever and cough	265 (49%)	459 (58.7%)
Admitted to hospital	5 (0.9%)	5 (0.6%)
Tested for influenza	19 (3.5%)	36 (4.6%)
Tested, result positive for influenza	3 (0.6%)	3 (0.4%)
Tested for COVID-19 by PCR	249 (46%)	423 (54.1%)
Tested for COVID-19 by PCR, result positive	167 (30.9%)	285 (36.4%)
Tested for COVID-19 by RAT	328 (60.6%)	428 (54.7%)
Tested for COVID-19 by RAT, result positive	191 (35.3%)	279 (35.7%)

*Includes those who sought medical advice from a general practitioner, COVID-19 clinic, emergency department, or were admitted to hospital for fever & cough

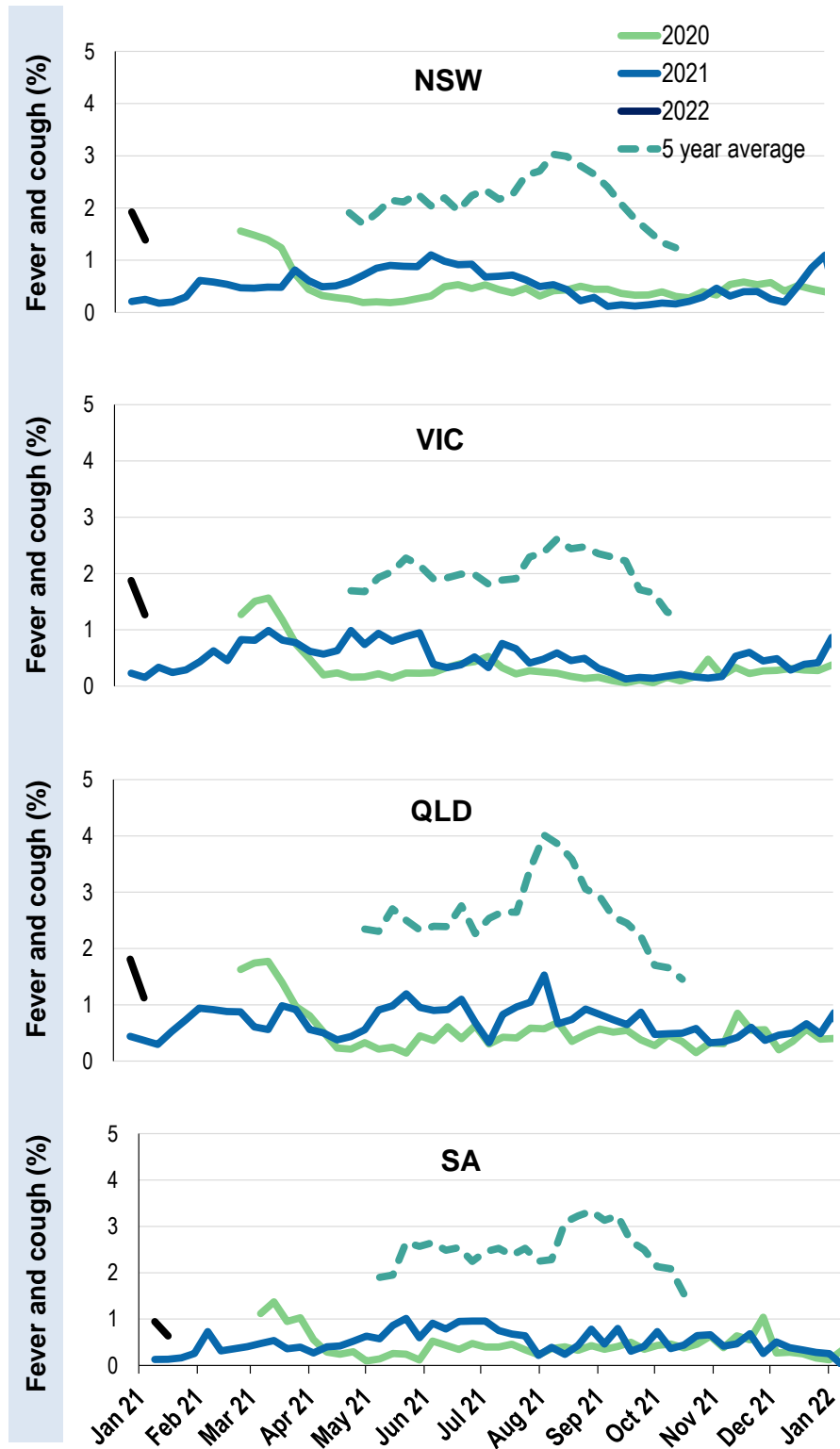
Fever, cough and absence from work or normal duties (Australia):



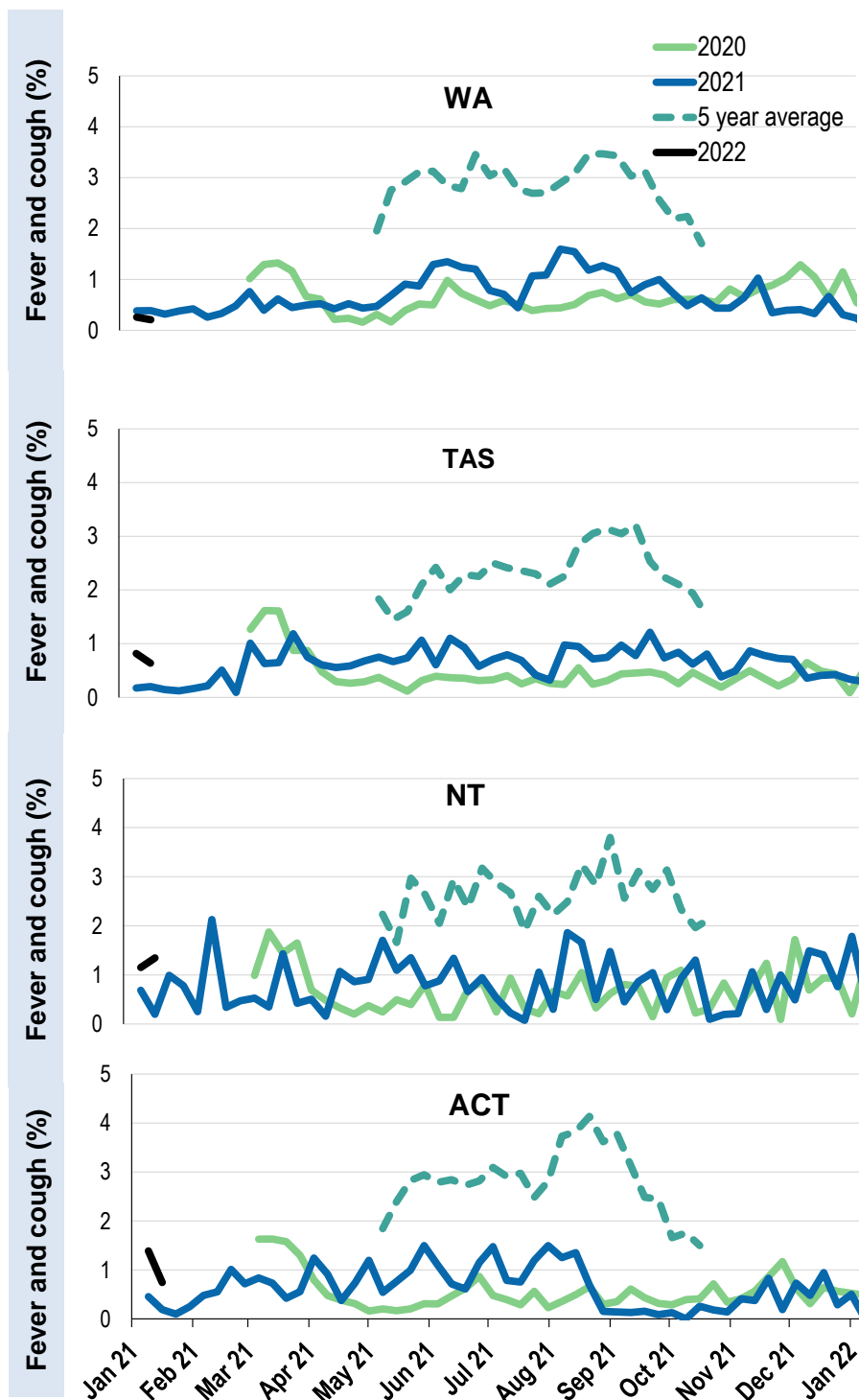
Influenza-like illness activity by age group in 2022 (Australia):



Influenza-like illness activity by state/territory (age standardised):



Influenza-like illness activity by state/territory (age standardised):



Participation:
57,854 participants (57,531 last week)

State	Participants	%	Rate/100,000 population
NSW	20122	34.8%	254.8
VIC	11576	20.0%	182.0
QLD	7269	12.6%	146.9
SA	5166	8.9%	299.1
WA	5810	10.0%	224.6
TAS	3672	6.3%	703.4
NT	929	1.6%	377.5
ACT	3310	5.7%	802.2
AUS	57854	100.0%	234.2

Vaccination rates:

Vaccinated participants:	COVID-19 vaccine		
	At least 1 dose (%)	At least 2 doses (%)	3 doses (%)
<5 years			
5-17 years	68.8	46.2	0.8
18-64 years	99.1	98.5	61.4
65+ years	99.3	99.0	73.5
Working with patients	99.5	99.1	80.4
Aboriginal and/or Torres Strait Islander	90.9	85.2	43.1
Vaccinated overall (%)	95.3	93.0	59.7

*Influenza vaccination data is excluded until the 2022 influenza vaccine is released in Australia

