

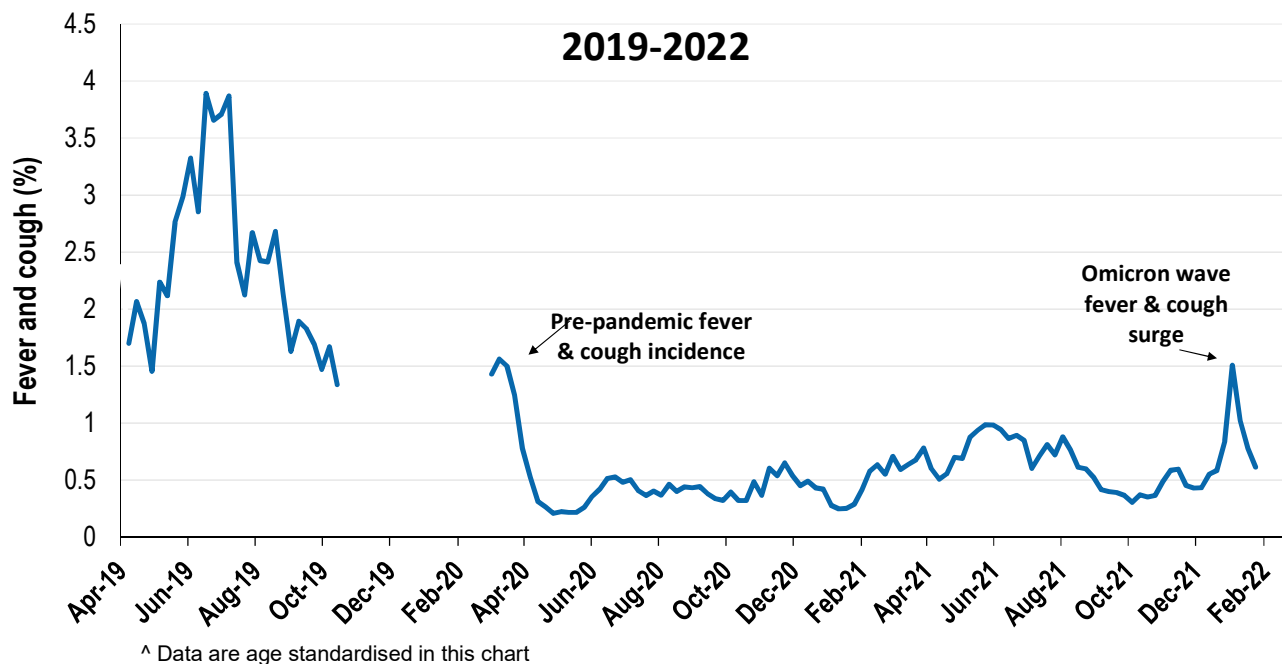
## Respiratory illness associated with the Omicron wave surge appears to have peaked and is in decline in south-eastern Australia

**58,247 participants this week**

### Respiratory illness activity\*:

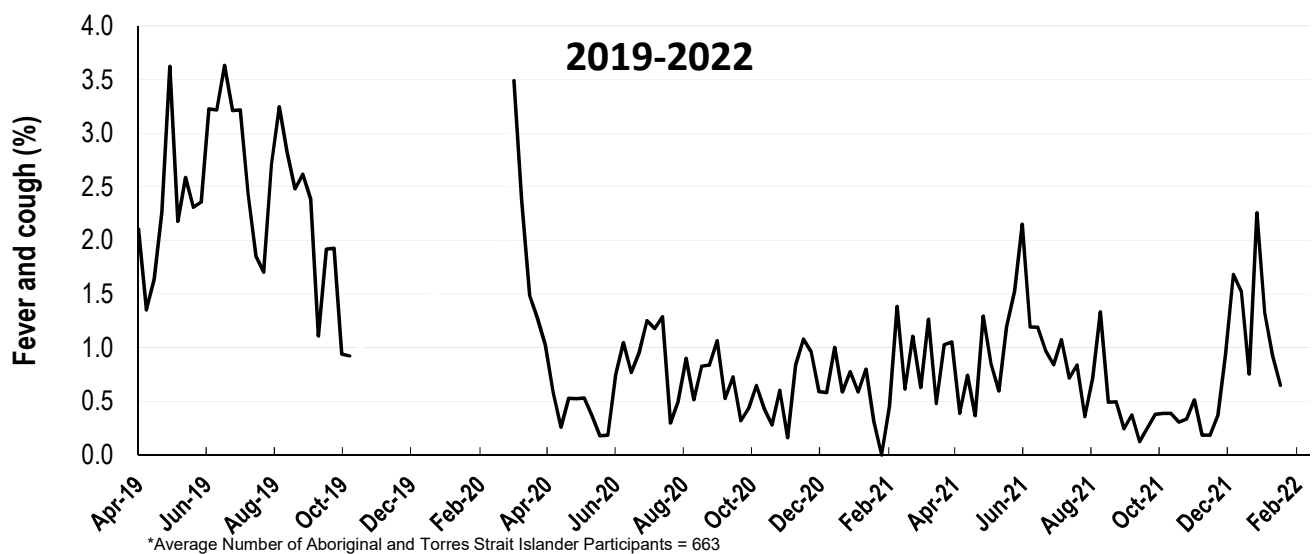
\*Respiratory illness activity is defined as fever & cough for this report

**0.6% this week: respiratory illness activity is low**



### Respiratory illness activity among Aboriginal and Torres Strait Islander participants

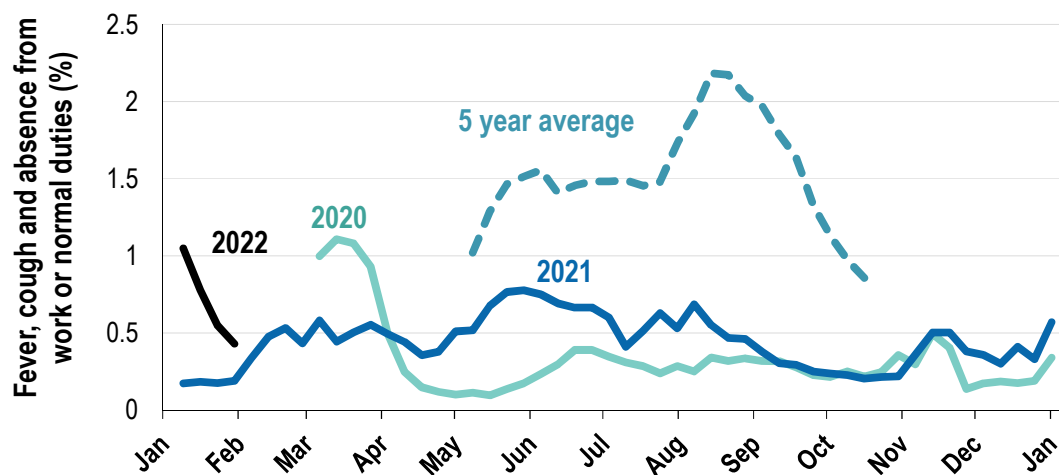
**0.6% this week: respiratory illness activity is low**



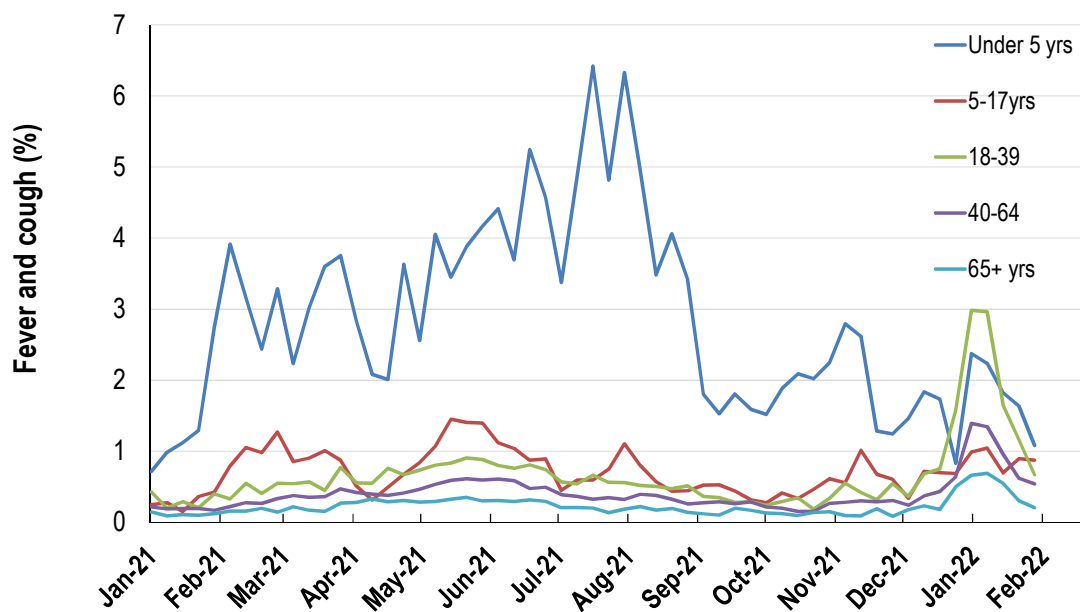
<b>Respiratory illness severity:</b> <i>49.1% of participants with fever and cough sought medical advice this week</i>		
Respiratory illness Severity	Week ending 30 January 2022 number (%)	Week ending 23 January 2022 number (%)
<b>Number of participants</b>	58247 (100%)	57102 (100%)
Fever & cough	281 (0.5%)	353 (0.6%)
Fever, cough & time-off normal duties	191 (0.3%)	252 (0.4%)
Fever, cough & 3 or more days off work/normal duties	191 (0.3%)	252 (0.4%)
<b>Number of participants with fever and cough</b>	281 (100%)	353 (100%)
*Sought medical advice for fever and cough	138 (49.1%)	173 (49%)
Admitted to hospital	1 (0.4%)	3 (0.8%)
Tested for influenza	8 (2.8%)	11 (3.1%)
Tested, result positive for influenza	1 (0.4%)	0 (0%)
Tested for COVID-19 by PCR	142 (50.5%)	165 (46.7%)
Tested for COVID-19 by PCR, result positive	96 (34.2%)	98 (27.8%)
Tested for COVID-19 by RAT	165 (58.7%)	234 (66.3%)
Tested for COVID-19 by RAT, result positive	89 (31.7%)	142 (40.2%)

\*Includes those who sought medical advice from a general practitioner, COVID-19 clinic, emergency department, or were admitted to hospital for fever & cough

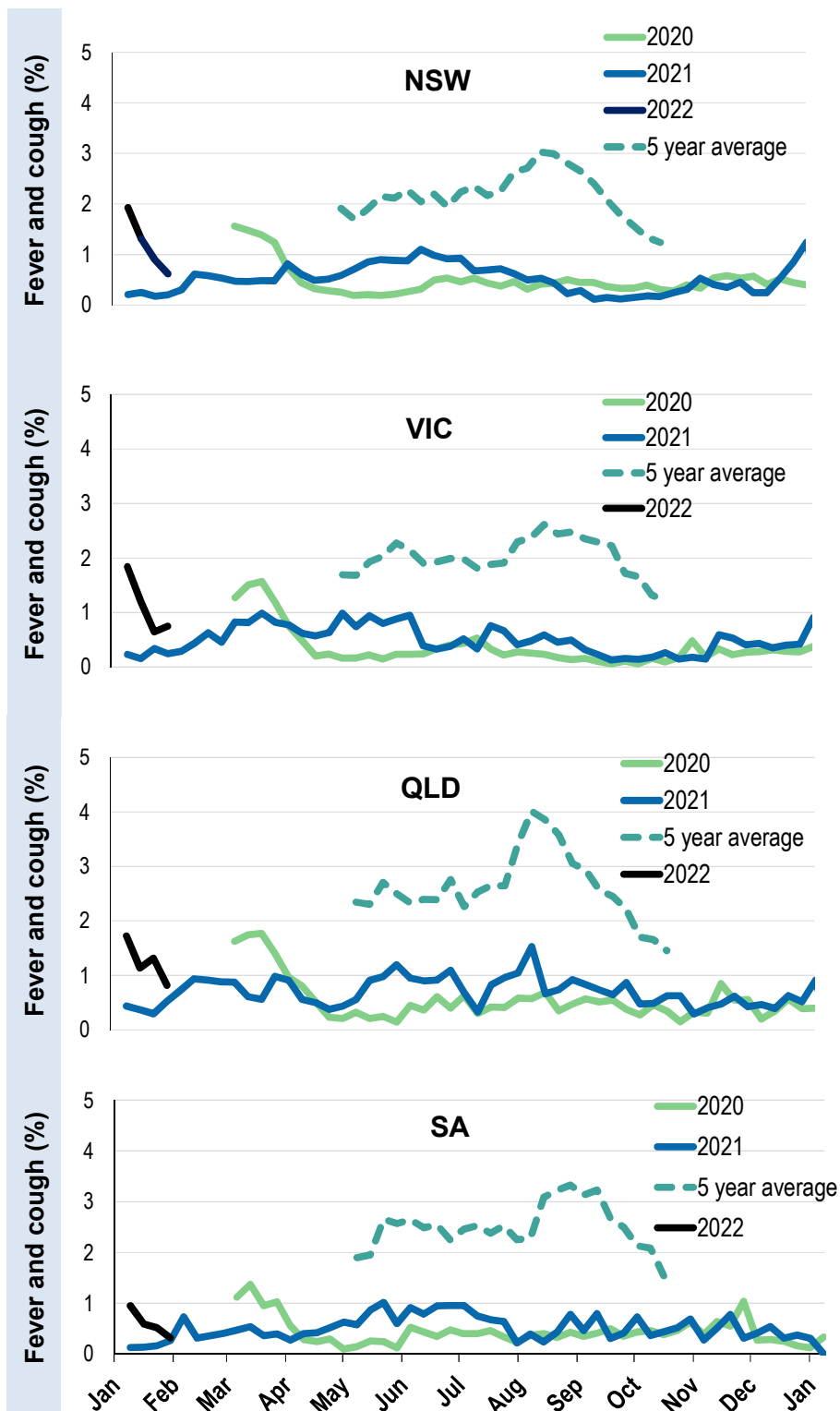
**Fever, cough and absence from work or normal duties (Australia):**



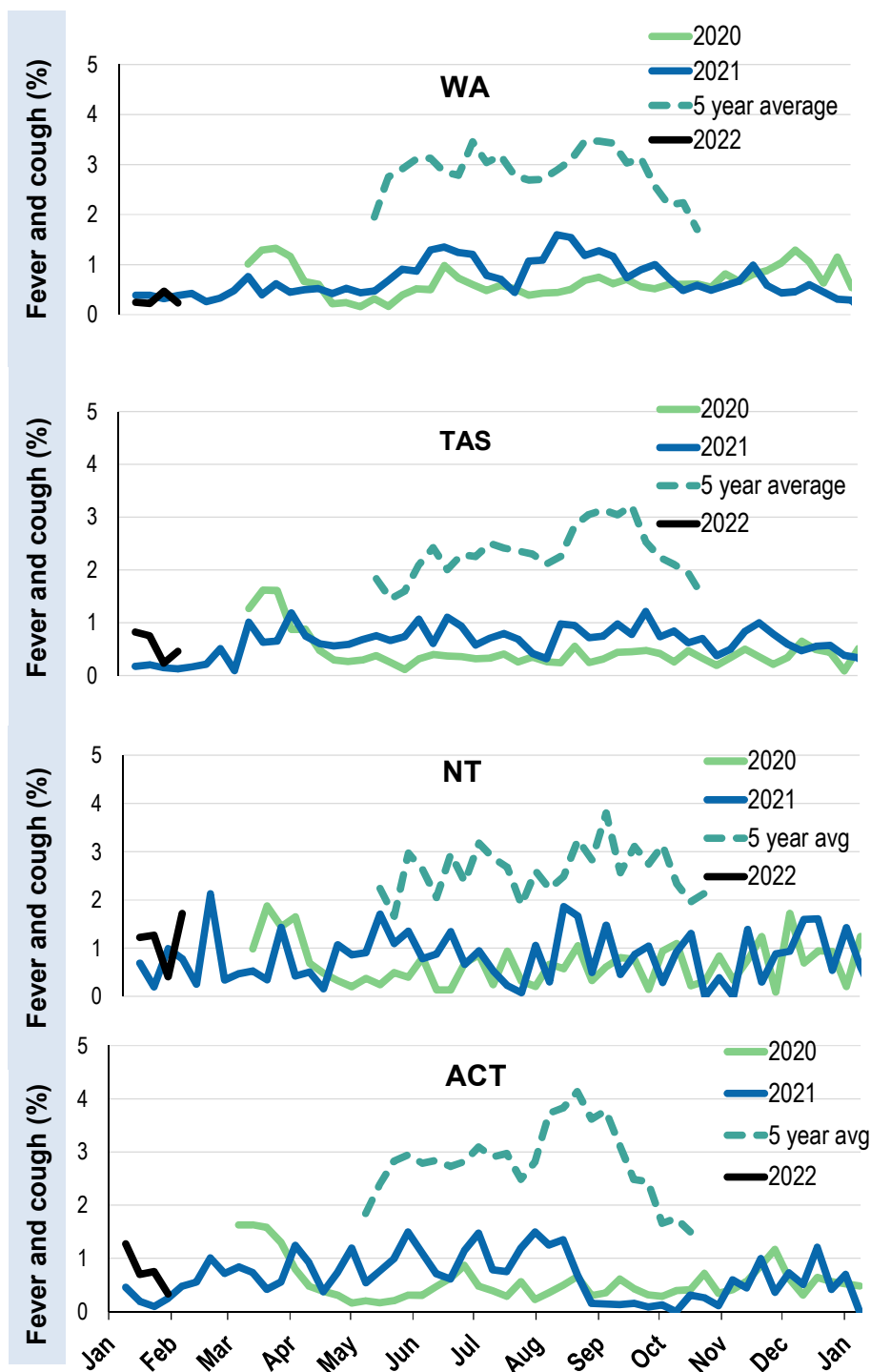
**Respiratory illness activity by age group in 2021 and 2022 (Australia):**



**Respiratory illness activity by state/territory (age standardised):**



**Respiratory illness activity by state/territory (age standardised):**



**Participation:**
**58,247 participants (05,710 last week)**

State	Participants	% Rate/100,000 population
NSW	20271	34.8% <b>256.7</b>
VIC	11483	19.7% <b>180.6</b>
QLD	7334	12.6% <b>148.2</b>
SA	5217	9.0% <b>302.1</b>
WA	5969	10.2% <b>230.7</b>
TAS	3712	6.4% <b>711.1</b>
NT	946	1.6% <b>384.4</b>
ACT	3315	5.7% <b>803.4</b>
AUS	58247	100.0% <b>235.8</b>

**Vaccination rates:**
**Vaccinated participants:**

	COVID-19 vaccine		
	At least 1 dose (%)	At least 2 doses (%)	3 doses (%)
<5 years			
5-17 years	87.2	48.6	1.2
18-64 years	99.1	98.7	76.3
65+ years	99.4	99.2	87.0
Working with patients	99.5	99.3	88.5
Aboriginal and/or Torres Strait Islander	91.7	85.4	55.2
<b>Vaccinated overall (%)</b>	<b>96.8</b>	<b>93.2</b>	<b>72.4</b>

\*Influenza vaccination data is excluded until the 2022 influenza vaccine is released in Australia