

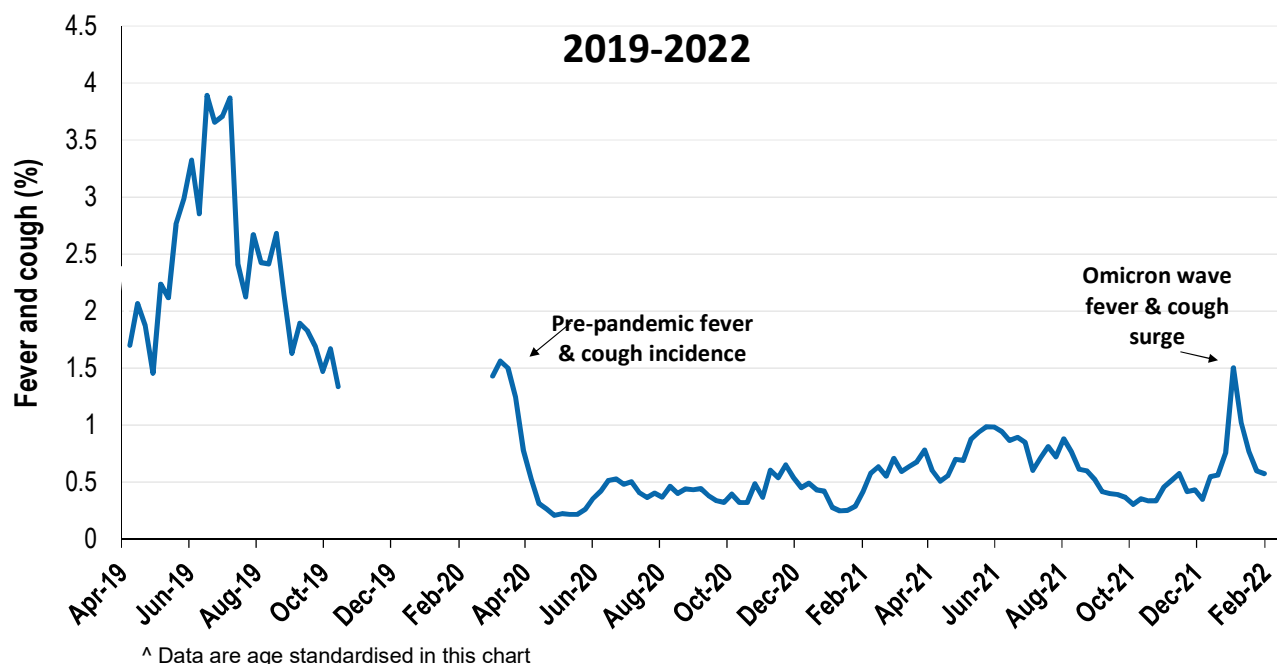
## Respiratory illness associated with the Omicron wave surge appears to have peaked and is in decline in south-eastern Australia

**59,090 participants this week**

### Respiratory illness activity\*:

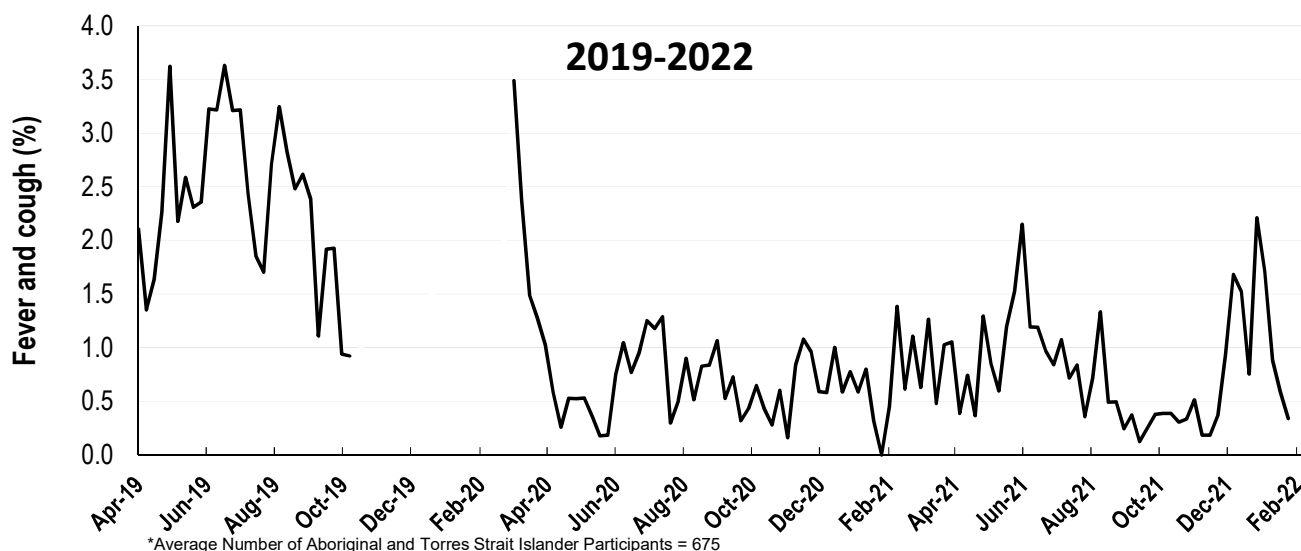
\*Respiratory illness activity is defined as fever & cough for this report

**0.6% this week: respiratory illness activity is low**



### Respiratory illness activity among Aboriginal and Torres Strait Islander participants

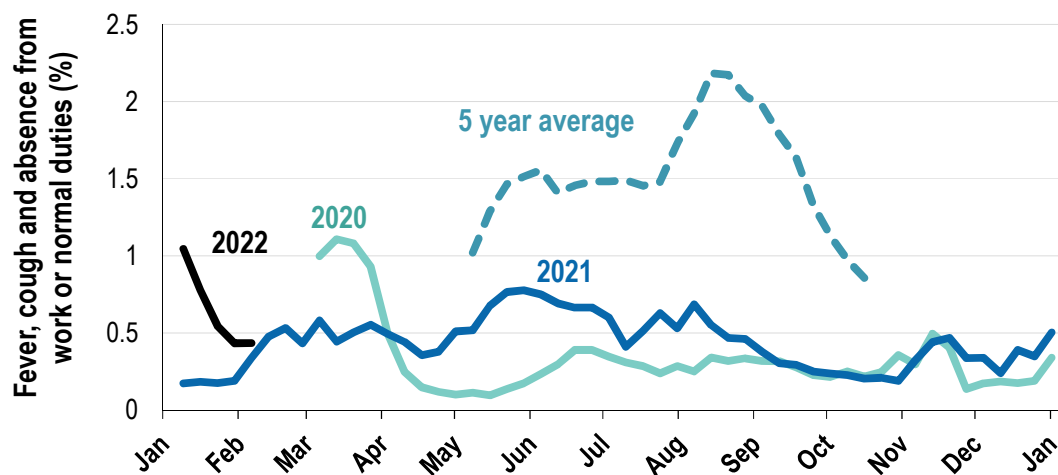
**0.3% this week: respiratory illness activity is low**



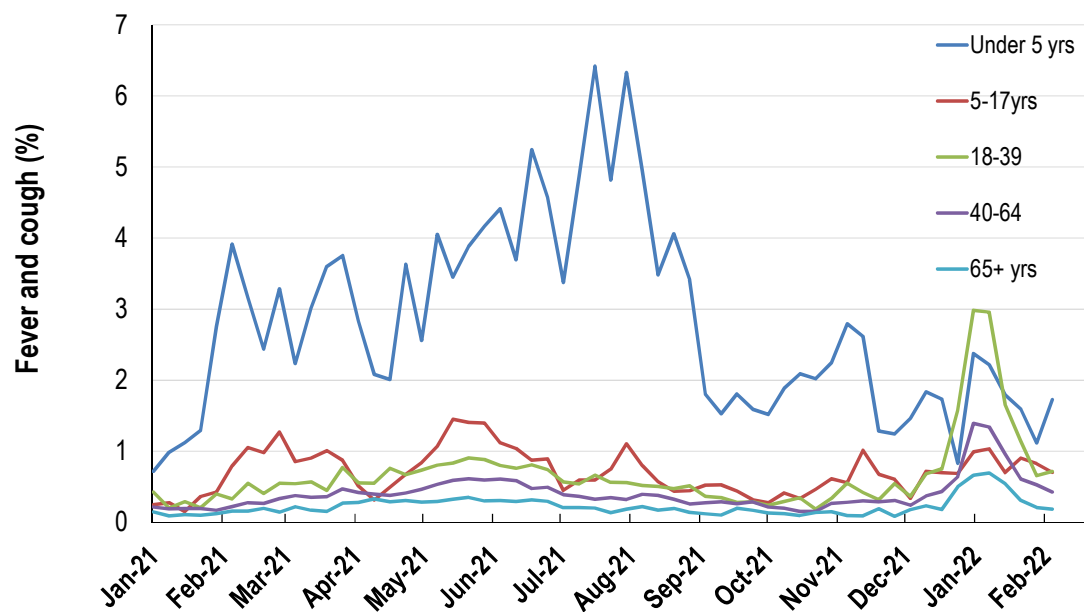
<b>Respiratory illness severity:</b> <i>46% of participants with fever and cough sought medical advice this week</i>		
Respiratory illness Severity	Week ending 06 February 2022 number (%)	Week ending 30 January 2022 number (%)
<b>Number of participants</b>	59090 (100%)	58248 (100%)
Fever & cough	250 (0.4%)	281 (0.5%)
Fever, cough & time-off normal duties	177 (0.3%)	198 (0.3%)
Fever, cough & 3 or more days off work/normal duties	177 (0.3%)	198 (0.3%)
<b>Number of participants with fever and cough</b>	250 (100%)	281 (100%)
*Sought medical advice for fever and cough	115 (46%)	139 (49.5%)
Admitted to hospital	2 (0.8%)	1 (0.4%)
Tested for influenza	11 (4.4%)	9 (3.2%)
Tested, result positive for influenza	1 (0.4%)	1 (0.4%)
Tested for COVID-19 by PCR	98 (39.2%)	147 (52.3%)
Tested for COVID-19 by PCR, result positive	53 (21.2%)	99 (35.2%)
Tested for COVID-19 by RAT	166 (66.4%)	172 (61.2%)
Tested for COVID-19 by RAT, result positive	80 (32%)	97 (34.5%)

\*Includes those who sought medical advice from a general practitioner, COVID-19 clinic, emergency department, or were admitted to hospital for fever & cough

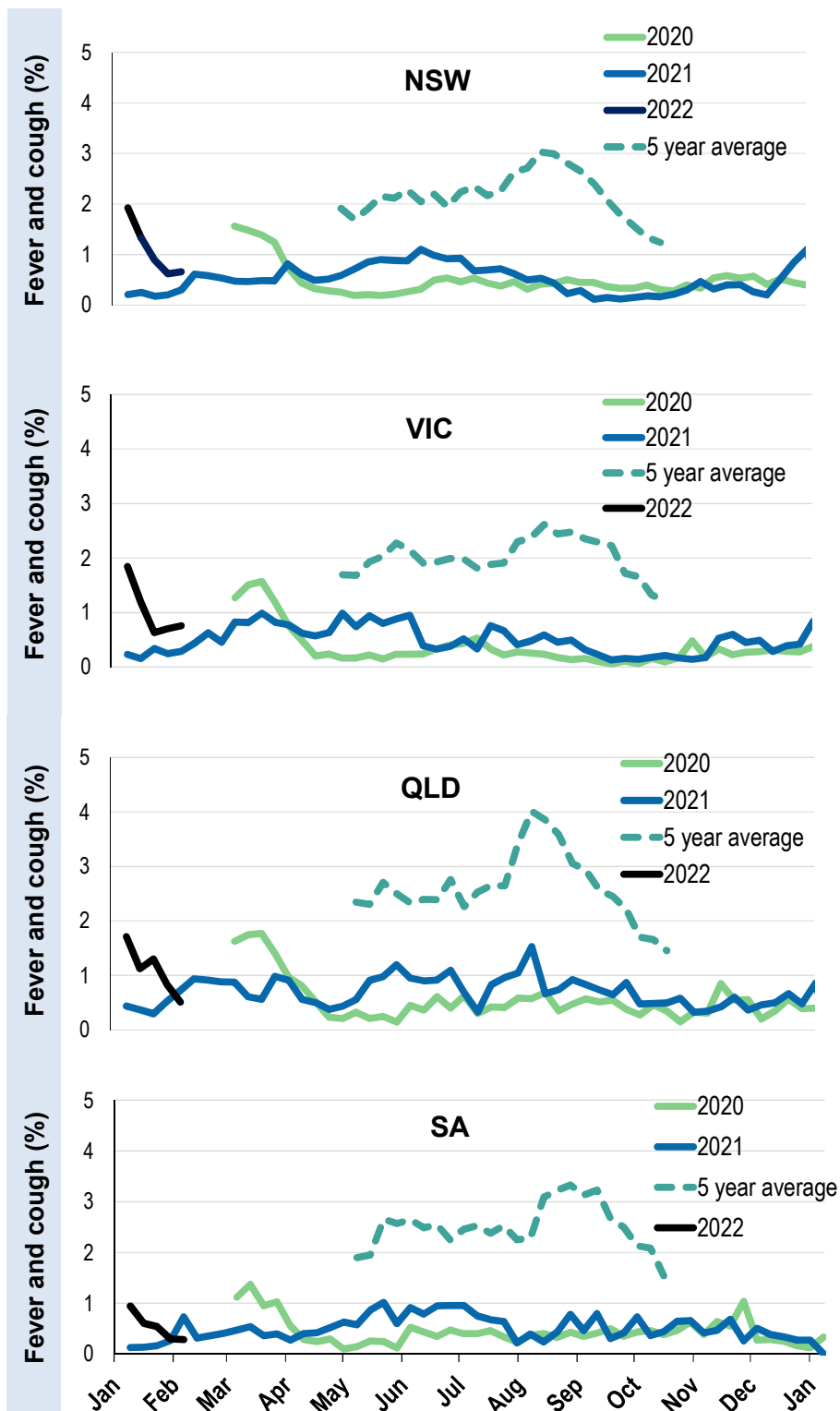
**Fever, cough and absence from work or normal duties (Australia):**



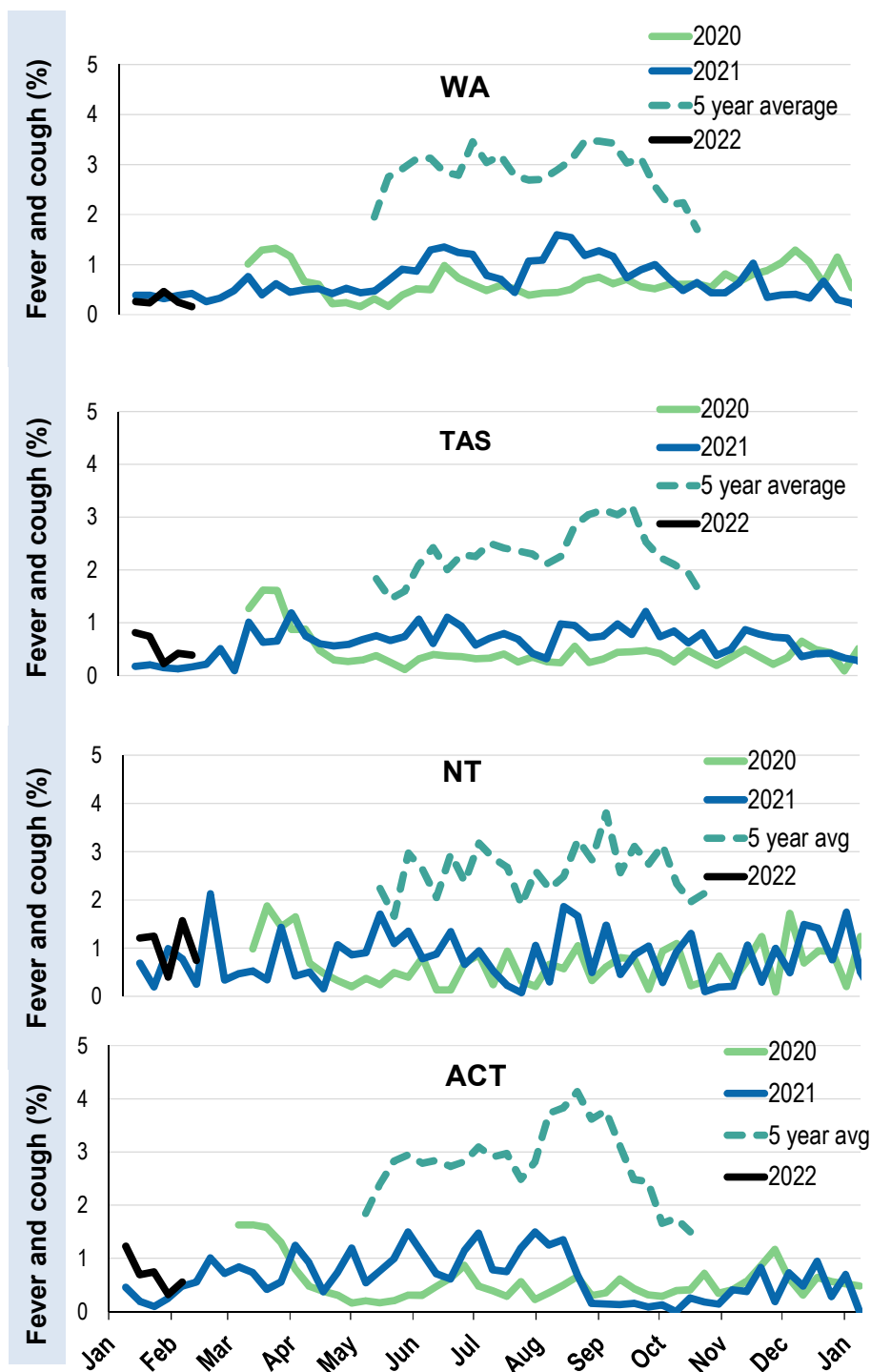
**Respiratory illness activity by age group in 2021 and 2022 (Australia):**



**Respiratory illness activity by state/territory (age standardised):**



**Respiratory illness activity by state/territory (age standardised):**



**Participation:**
**59,090 participants (58,248 last week)**

State	Participants	% Rate/100,000 population
NSW	20651	34.9% <b>261.5</b>
VIC	11742	19.9% <b>184.7</b>
QLD	7283	12.3% <b>147.2</b>
SA	5234	8.9% <b>303.1</b>
WA	6004	10.2% <b>232.1</b>
TAS	3821	6.5% <b>732.0</b>
NT	956	1.6% <b>388.5</b>
ACT	3399	5.8% <b>823.8</b>
AUS	59090	100.0% <b>239.2</b>

**Vaccination rates:**
**Vaccinated participants:**

	COVID-19 vaccine		
	At least 1 dose (%)	At least 2 doses (%)	3 doses (%)
<5 years			
5-17 years	89.9	48.8	3.5
18-64 years	99.2	98.8	81.4
65+ years	99.4	99.1	90.6
Working with patients	99.5	99.4	91.0
Aboriginal and/or Torres Strait Islander	93.1	87.1	59.2
<b>Vaccinated overall (%)</b>	<b>97.1</b>	<b>93.4</b>	<b>76.8</b>

\*Influenza vaccination data is excluded until the 2022 influenza vaccine is released in Australia