

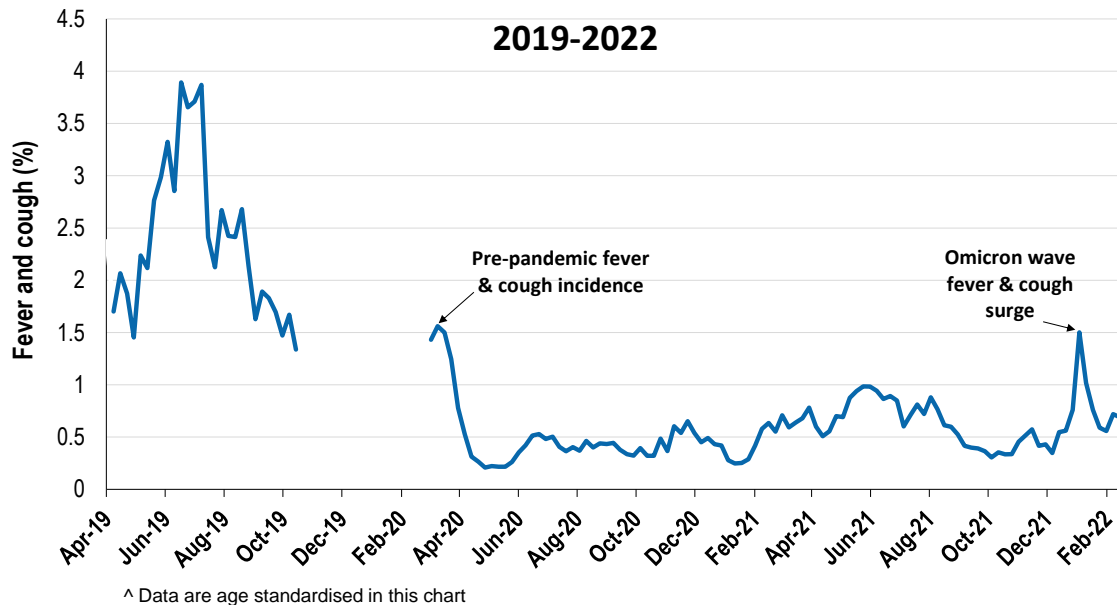
Respiratory illness levels are low, but increasing in school aged children (5-17 yrs)

58,568 participants this week

Respiratory illness activity*:

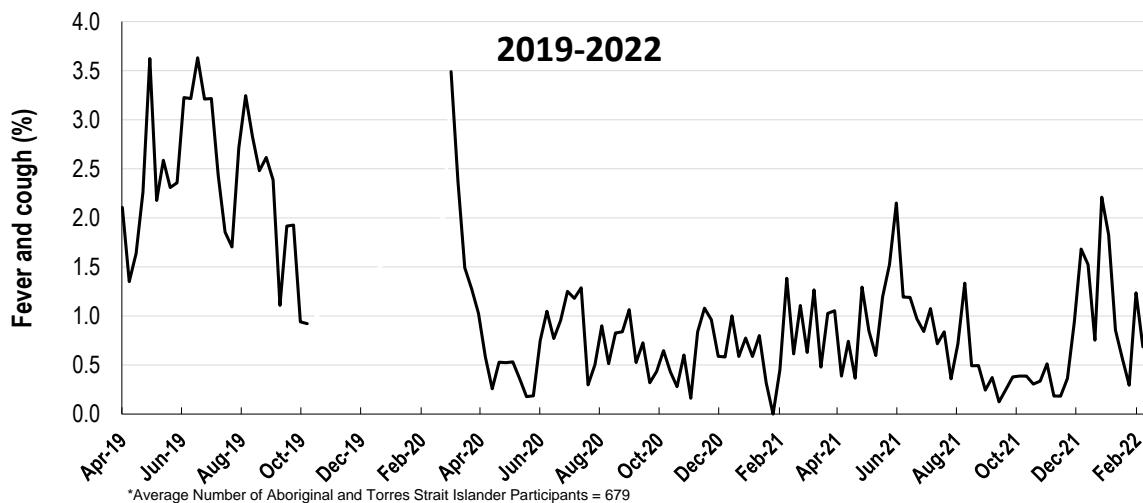
*Respiratory illness activity is defined as fever & cough for this report

0.7% this week: respiratory illness activity is low



Respiratory illness activity among Aboriginal and Torres Strait Islander participants

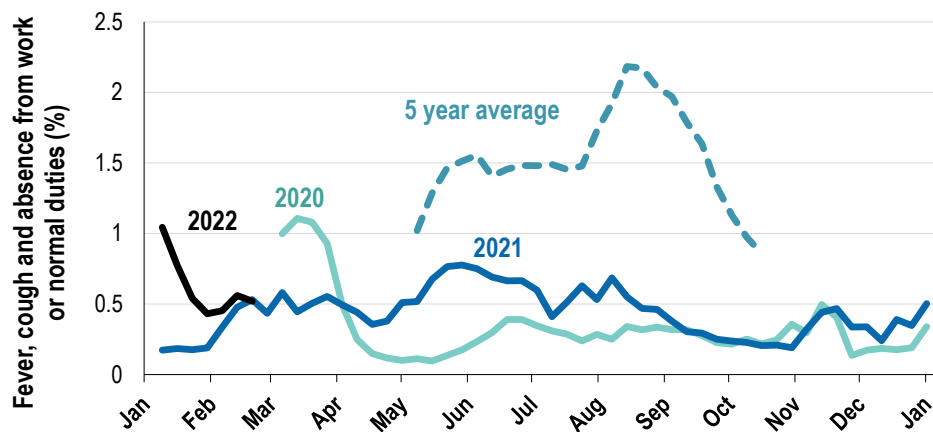
0.7% this week: respiratory illness activity is low



Respiratory illness severity: <i>40.1% of participants with fever and cough sought medical advice this week</i>		
Respiratory illness Severity	Week ending 20 February 2022 number (%)	Week ending 13 February 2022 number (%)
Number of participants	58568 (100%)	58515 (100%)
Fever & cough	267 (0.5%)	283 (0.5%)
Fever, cough & time-off normal duties	195 (0.3%)	214 (0.4%)
Fever, cough & 3 or more days off work/normal duties	195 (0.3%)	214 (0.4%)
Number of participants with fever and cough	267 (100%)	283 (100%)
*Sought medical advice for fever and cough	107 (40.1%)	143 (50.5%)
Admitted to hospital	7 (2.6%)	4 (1.4%)
Tested for influenza	12 (4.5%)	6 (2.1%)
Tested, result positive for influenza	0 (0%)	1 (0.4%)
Tested for COVID-19 by PCR	108 (40.4%)	119 (42%)
Tested for COVID-19 by PCR, result positive	59 (22.1%)	62 (21.9%)
Tested for COVID-19 by RAT	224 (83.9%)	205 (72.4%)
Tested for COVID-19 by RAT, result positive	84 (31.5%)	99 (35%)

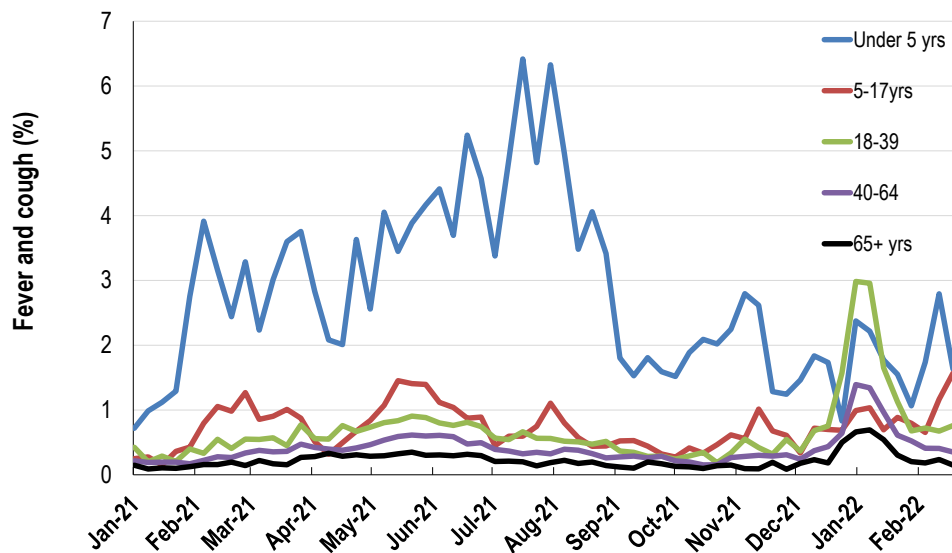
*Includes those who sought medical advice from a general practitioner, COVID-19 clinic, emergency department, or were admitted to hospital for fever & cough

Fever, cough and absence from work or normal duties (Australia):

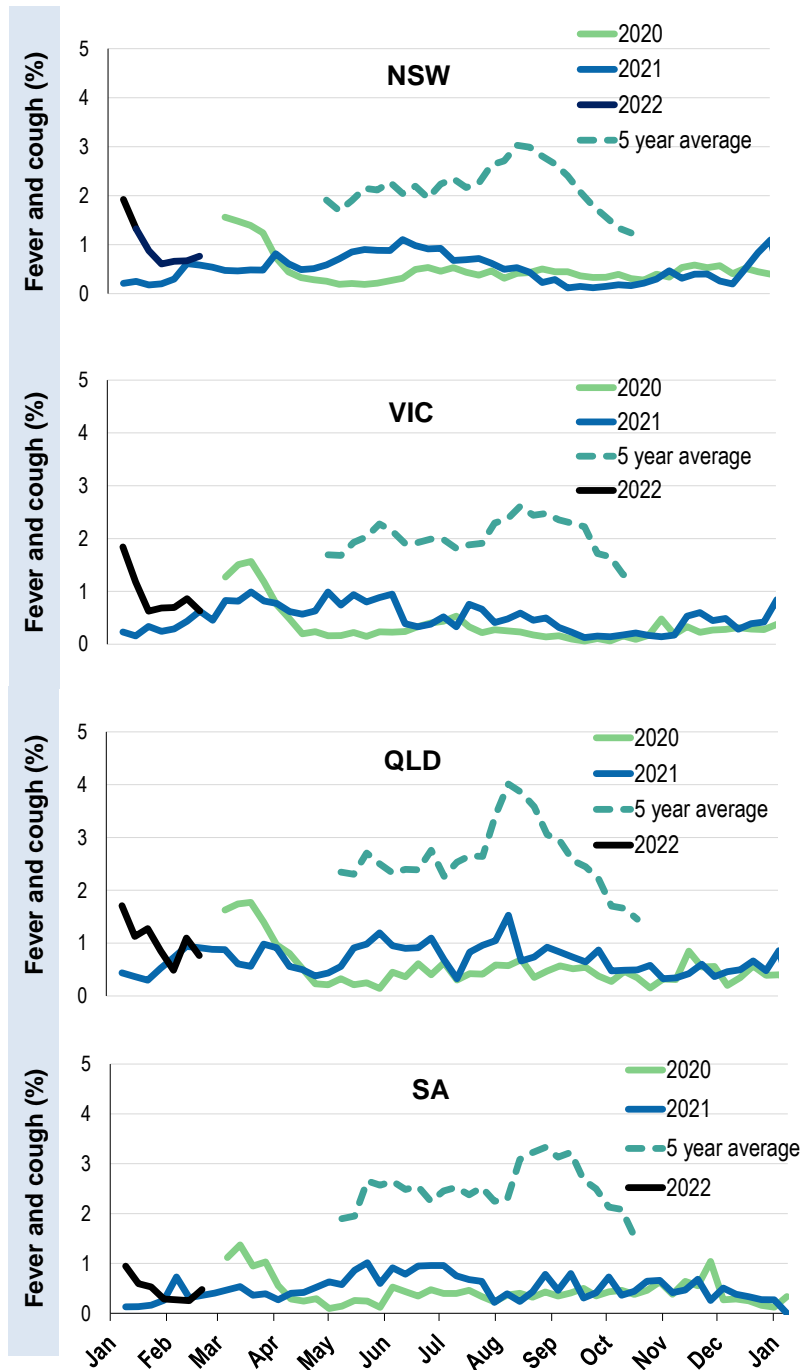


*5 year average is calculated using 2015, 2016, 2017, 2018 and 2019 data

Respiratory illness activity by age group in 2021 and 2022 (Australia):

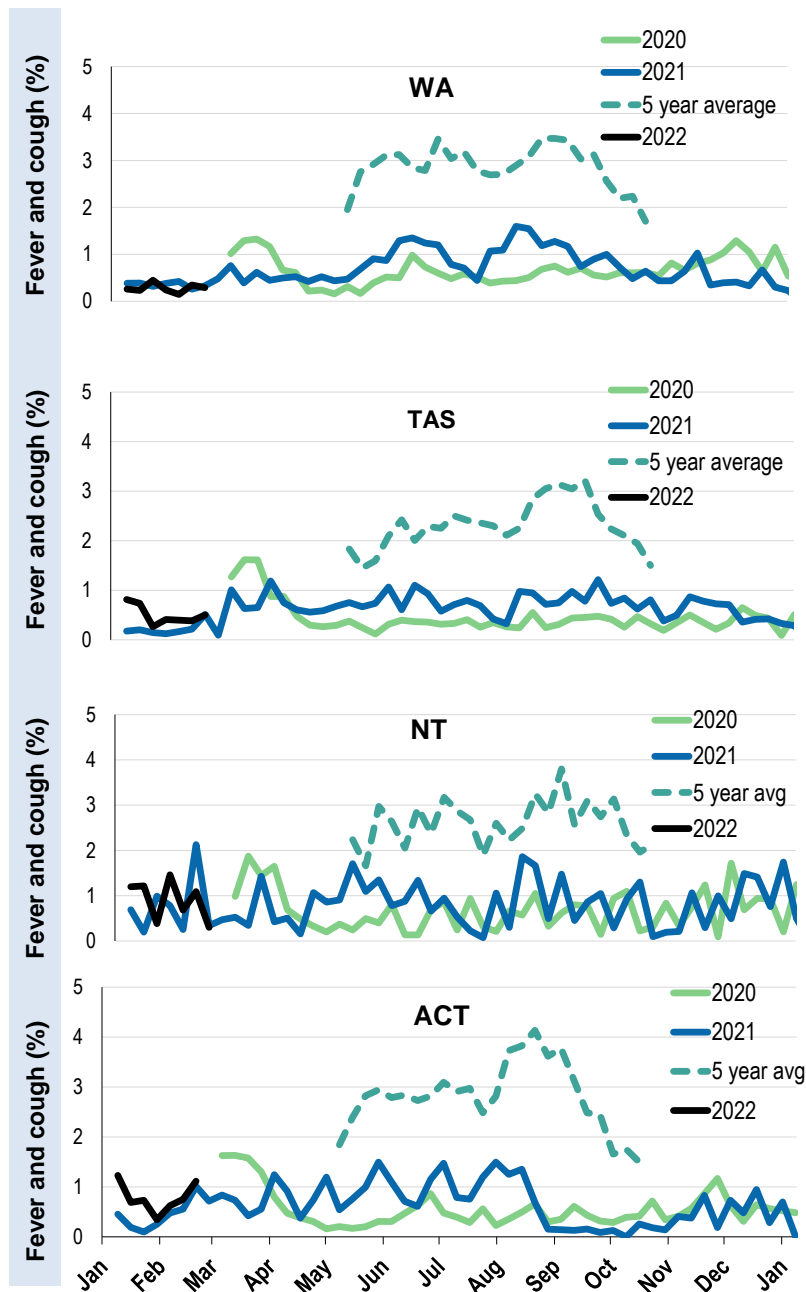


Respiratory illness activity by state/territory (age standardised):



*5 year average is calculated using 2015, 2016, 2017, 2018 and 2019 data

Respiratory illness activity by state/territory (age standardised):



*5 year average is calculated using 2015, 2016, 2017, 2018 and 2019 data

Participation:
58,568 participants (58,515 last week)

State	Participants	% Rate/100,000 population
NSW	20298	34.7% 257.1
VIC	11599	19.8% 182.4
QLD	7239	12.4% 146.3
SA	5225	8.9% 302.6
WA	6002	10.2% 232.0
TAS	3839	6.6% 735.4
NT	974	1.7% 395.8
ACT	3392	5.8% 822.1
AUS	58568	100.0% 237.1

Vaccination rates:

Vaccinated participants:	COVID-19 vaccine		
	At least 1 dose (%)	At least 2 doses (%)	3 doses (%)
<5 years			
5-11 years	85.8	2.5	0.1
12-17 years	98.0	95.3	15.4
18-64 years	99.2	98.9	86.9
65+ years	99.4	99.2	94.2
Working with patients	99.5	99.2	93.7
Aboriginal and/or Torres Strait Islander	93.8	87.8	63.4
Vaccinated overall (%)	97.3	93.5	81.6

*Influenza vaccination data is excluded until the 2022 influenza vaccine is released in Australia