

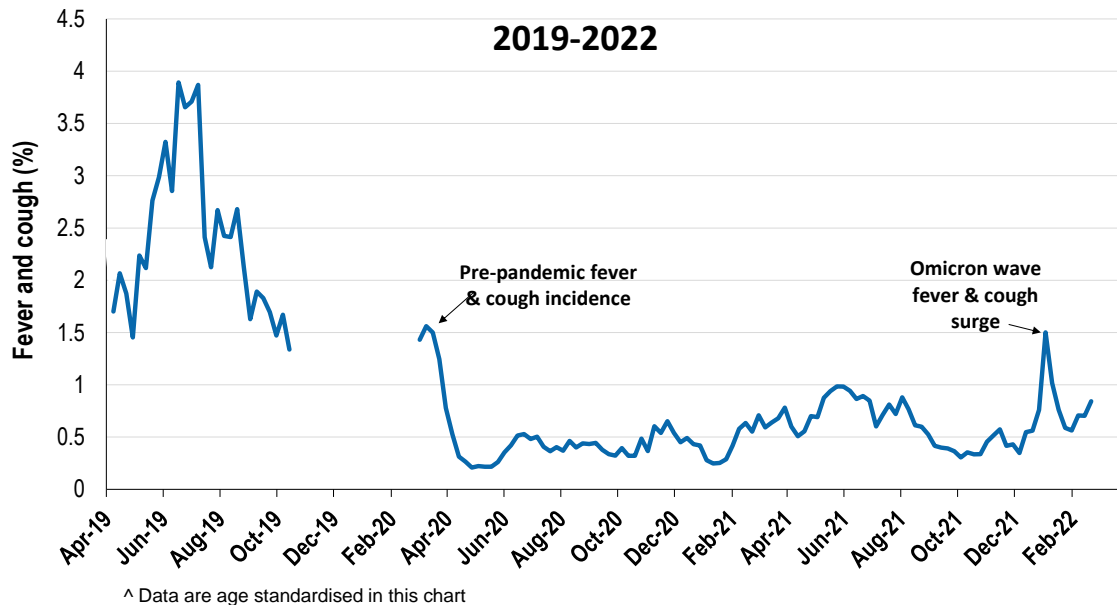
Respiratory illness levels are low, but increasing in children under the age of 5

57,529 participants this week

Respiratory illness activity*:

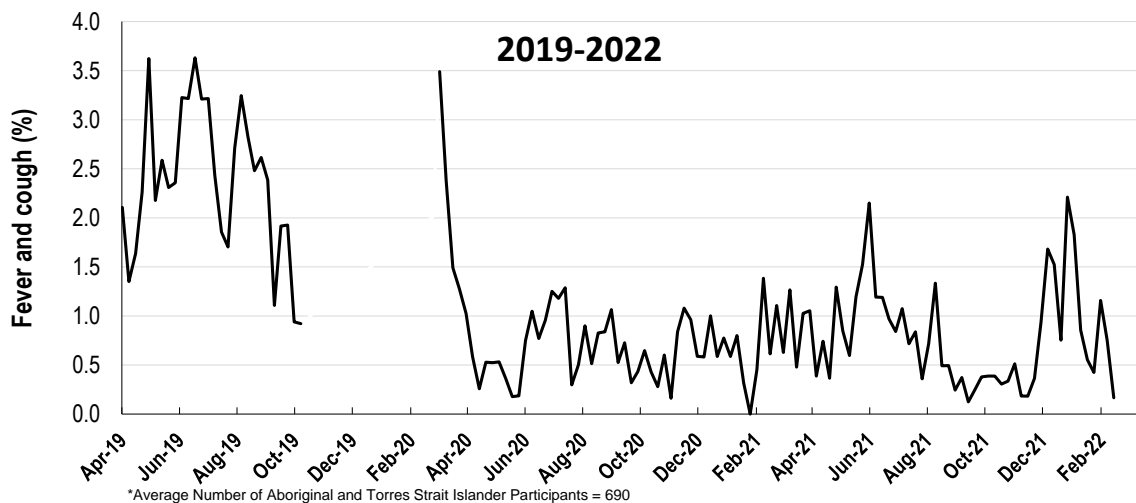
*Respiratory illness activity is defined as fever & cough for this report

0.8% this week: respiratory illness activity is low



Respiratory illness activity among Aboriginal and Torres Strait Islander participants

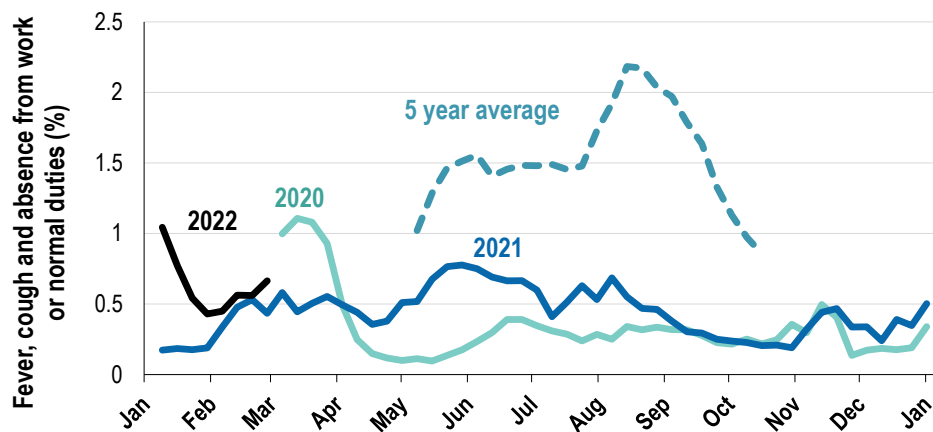
0.2% this week: respiratory illness activity is low



Respiratory illness severity:		
<i>39.5% of participants with fever and cough sought medical advice this week</i>		
Respiratory illness Severity	Week ending 27 February 2022 number (%)	Week ending 20 February 2022 number (%)
Number of participants	57529 (100%)	58568 (100%)
Fever & cough	309 (0.5%)	267 (0.5%)
Fever, cough & time-off normal duties	241 (0.4%)	203 (0.3%)
Fever, cough & 3 or more days off work/normal duties	241 (0.4%)	203 (0.3%)
Number of participants with fever and cough	309 (100%)	267 (100%)
*Sought medical advice for fever and cough	122 (39.5%)	116 (43.4%)
Admitted to hospital	2 (0.6%)	7 (2.6%)
Tested for influenza	4 (1.3%)	14 (5.2%)
Tested, result positive for influenza	0 (0%)	0 (0%)
Tested for COVID-19 by PCR	106 (34.3%)	113 (42.3%)
Tested for COVID-19 by PCR, result positive	52 (16.8%)	59 (22.1%)
Tested for COVID-19 by RAT	248 (80.3%)	224 (83.9%)
Tested for COVID-19 by RAT, result positive	112 (36.2%)	85 (31.8%)

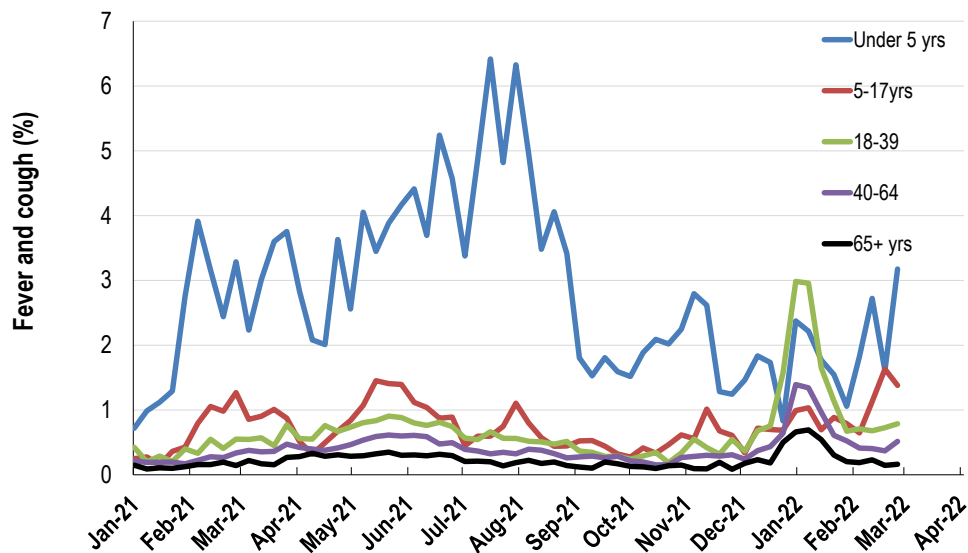
*Includes those who sought medical advice from a general practitioner, COVID-19 clinic, emergency department, or were admitted to hospital for fever & cough

Fever, cough and absence from work or normal duties (Australia):

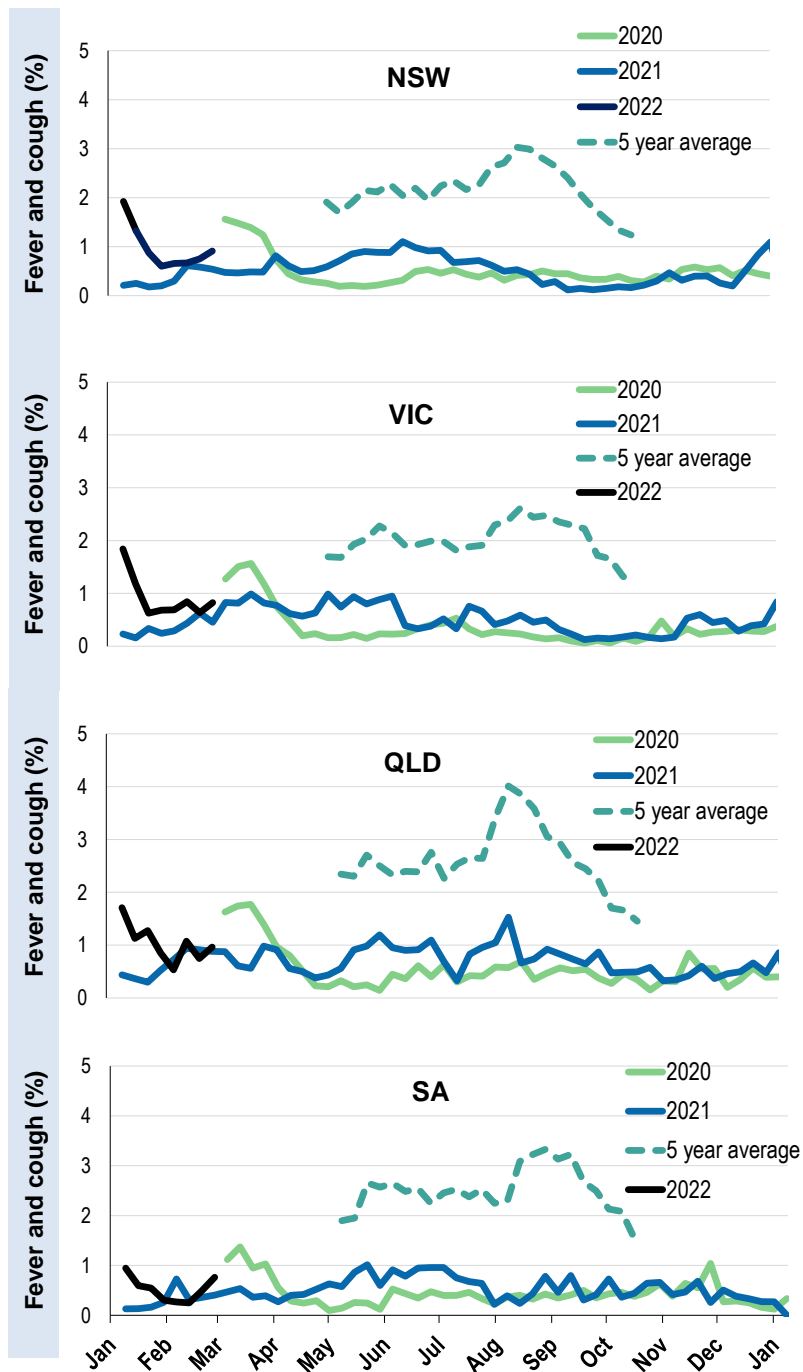


*5 year average is calculated using 2015, 2016, 2017, 2018 and 2019 data

Respiratory illness activity by age group in 2021 and 2022 (Australia):

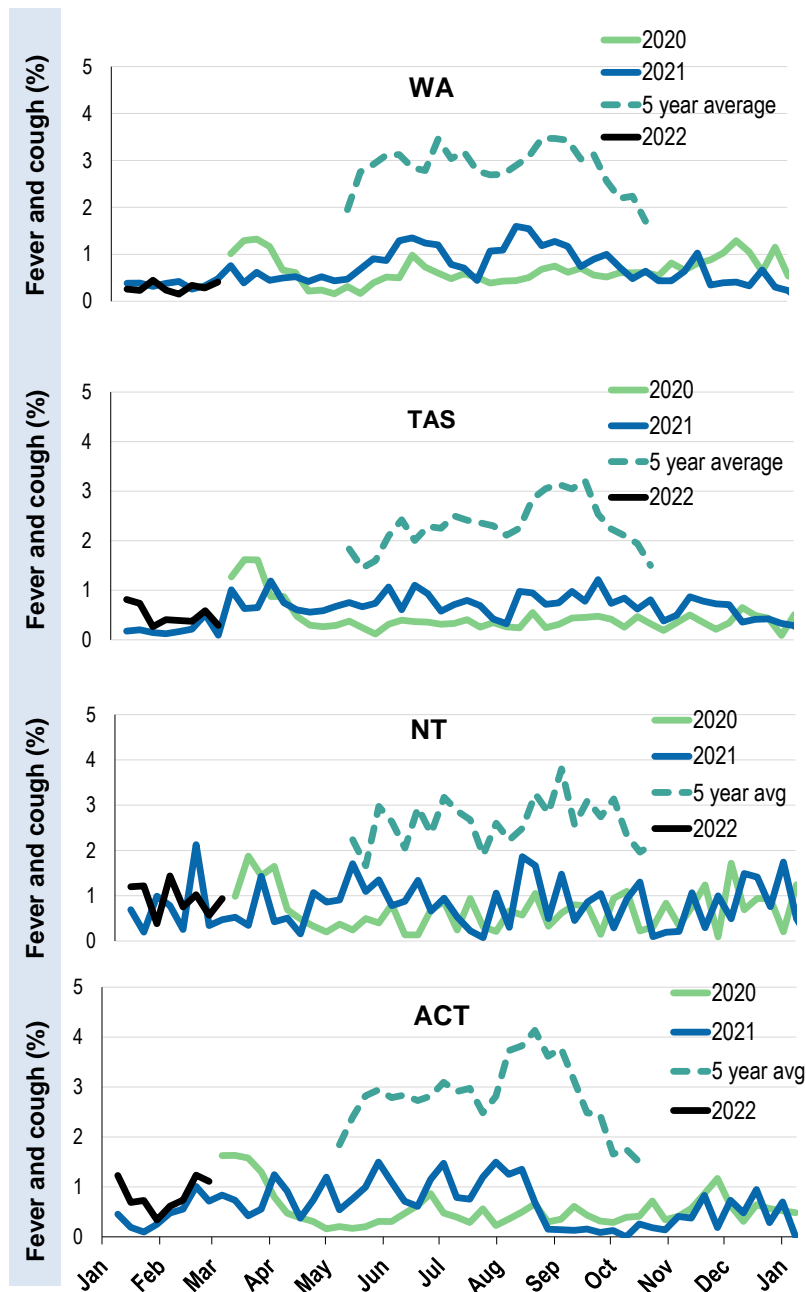


Respiratory illness activity by state/territory (age standardised):



*5 year average is calculated using 2015, 2016, 2017, 2018 and 2019 data

Respiratory illness activity by state/territory (age standardised):



*5 year average is calculated using 2015, 2016, 2017, 2018 and 2019 data

Participation:
57,529 participants (58,568 last week)

State	Participants	% Rate/100,000 population
NSW	20038	34.8% 253.8
VIC	11466	19.9% 180.3
QLD	6856	11.9% 138.5
SA	5166	9.0% 299.1
WA	5974	10.4% 230.9
TAS	3743	6.5% 717.0
NT	1001	1.7% 406.7
ACT	3285	5.7% 796.2
AUS	57529	100.0% 232.9

Vaccination rates:

Vaccinated participants:	COVID-19 vaccine		
	At least 1 dose (%)	At least 2 doses (%)	3 doses (%)
<5 years			
5-11 years	86.3	3.3	0.1
12-17 years	98.2	95.6	17.3
18-64 years	99.3	99.0	88.6
65+ years	99.4	99.2	95.2
Working with patients	99.6	99.4	94.4
Aboriginal and/or Torres Strait Islander	93.8	87.5	66.0
Vaccinated overall (%)	97.4	93.7	83.1

*Influenza vaccination data is excluded until the 2022 influenza vaccine is released in Australia

