

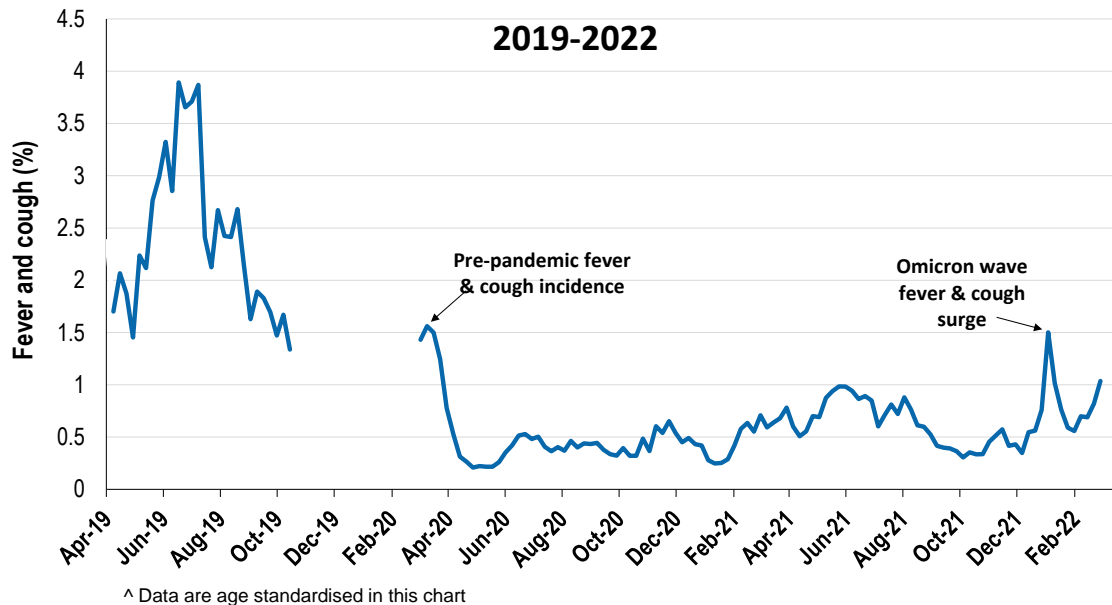
Respiratory illness levels are low, but school aged children (5-17 yrs) are at the highest levels since the start of 2021

57,782 participants this week

Respiratory illness activity*:

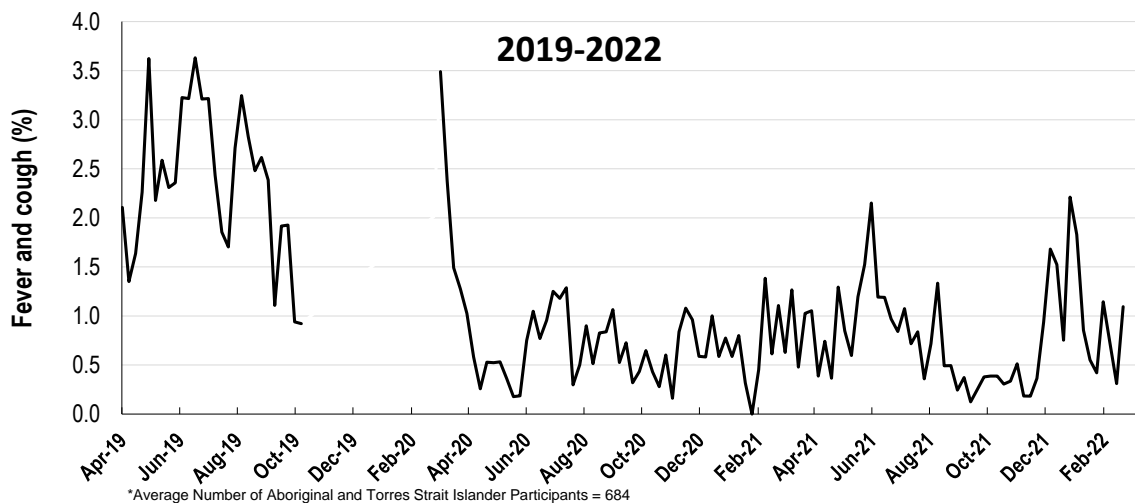
*Respiratory illness activity is defined as fever & cough for this report

1% this week: respiratory illness activity is low



Respiratory illness activity among Aboriginal and Torres Strait Islander participants

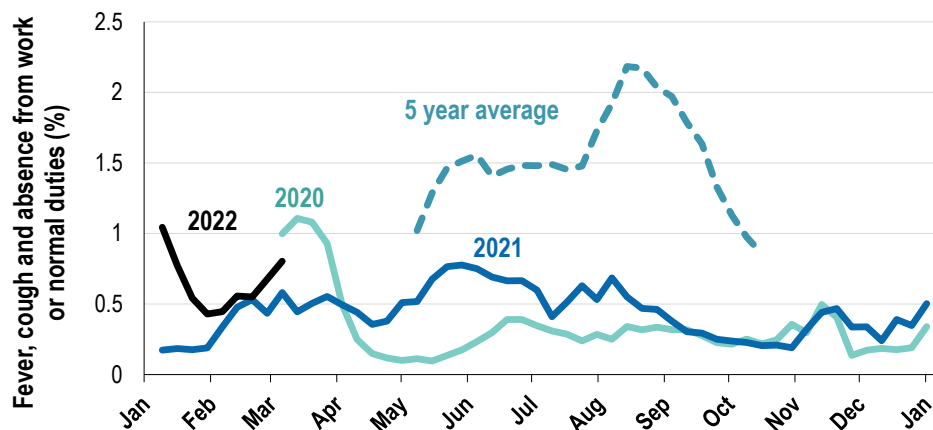
1.1% this week: respiratory illness activity is low



Respiratory illness severity:		
<i>42.7% of participants with fever and cough sought medical advice this week</i>		
Respiratory illness Severity	Week ending 06 March 2022 number (%)	Week ending 27 February 2022 number (%)
Number of participants	57782 (100%)	57529 (100%)
Fever & cough	403 (0.7%)	309 (0.5%)
Fever, cough & time-off normal duties	295 (0.5%)	248 (0.4%)
Fever, cough & 3 or more days off work/normal duties	295 (0.5%)	248 (0.4%)
Number of participants with fever and cough	403 (100%)	309 (100%)
*Sought medical advice for fever and cough	172 (42.7%)	126 (40.8%)
Admitted to hospital	8 (2%)	5 (1.6%)
Tested for influenza	3 (0.7%)	6 (1.9%)
Tested, result positive for influenza	0 (0%)	1 (0.3%)
Tested for COVID-19 by PCR	141 (35%)	114 (36.9%)
Tested for COVID-19 by PCR, result positive	86 (21.3%)	54 (17.5%)
Tested for COVID-19 by RAT	340 (84.4%)	251 (81.2%)
Tested for COVID-19 by RAT, result positive	158 (39.2%)	114 (36.9%)

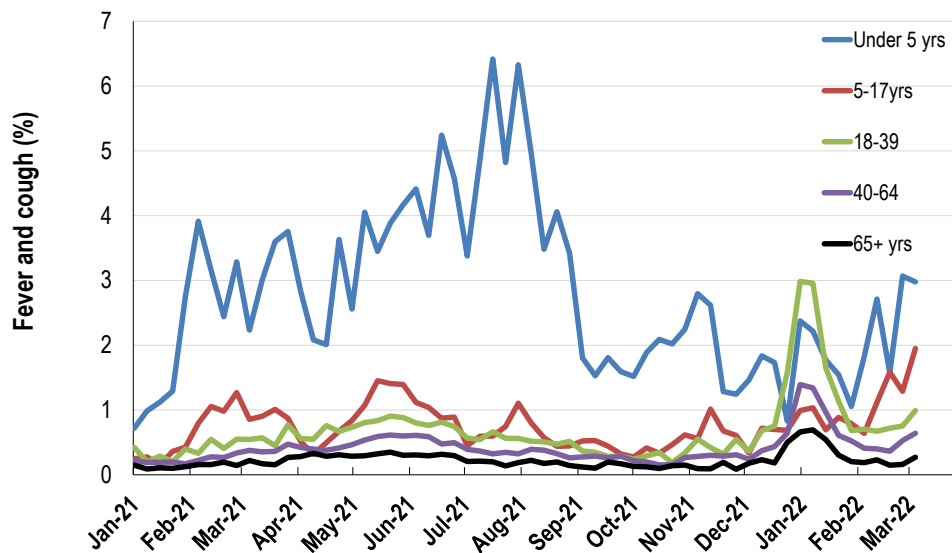
*Includes those who sought medical advice from a general practitioner, COVID-19 clinic, emergency department, or were admitted to hospital for fever & cough

Fever, cough and absence from work or normal duties (Australia):

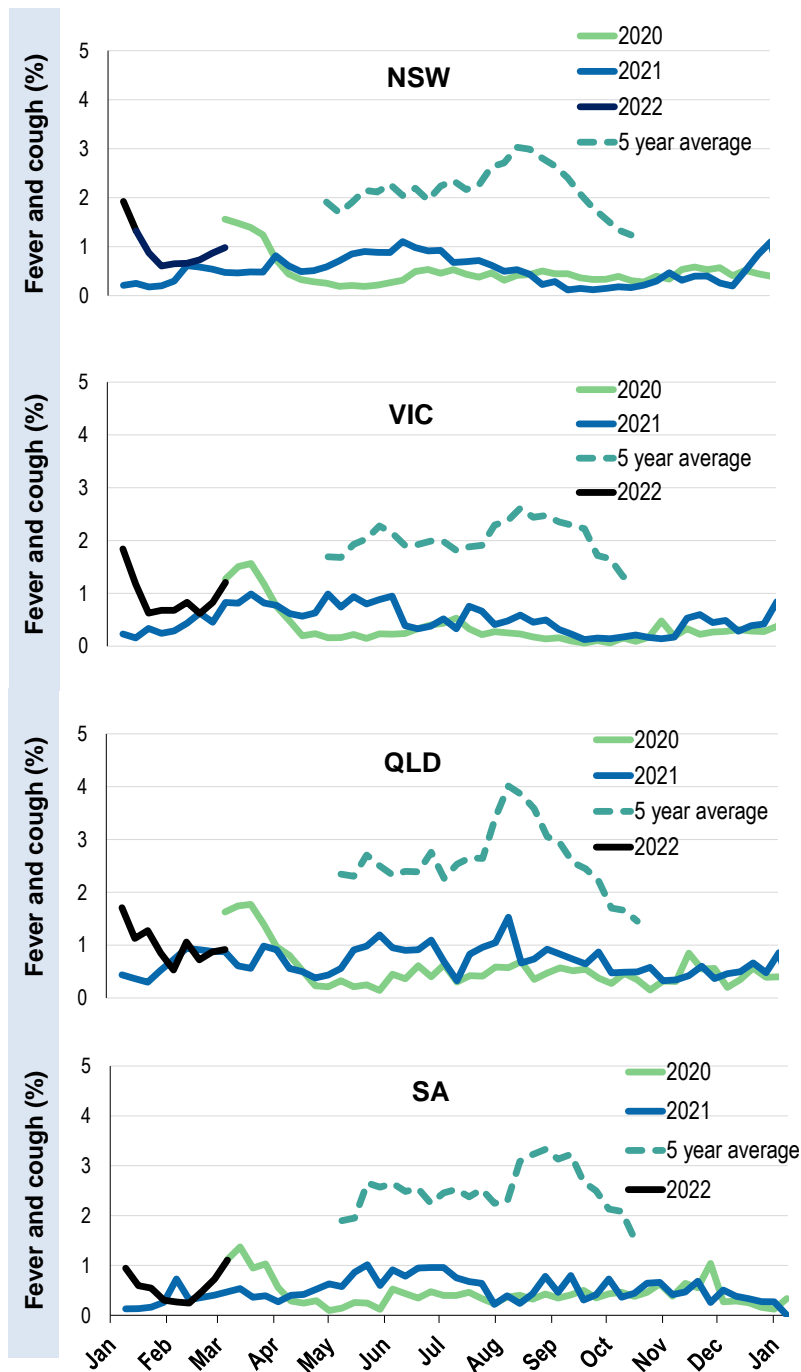


*5 year average is calculated using 2015, 2016, 2017, 2018 and 2019 data

Respiratory illness activity by age group in 2021 and 2022 (Australia):

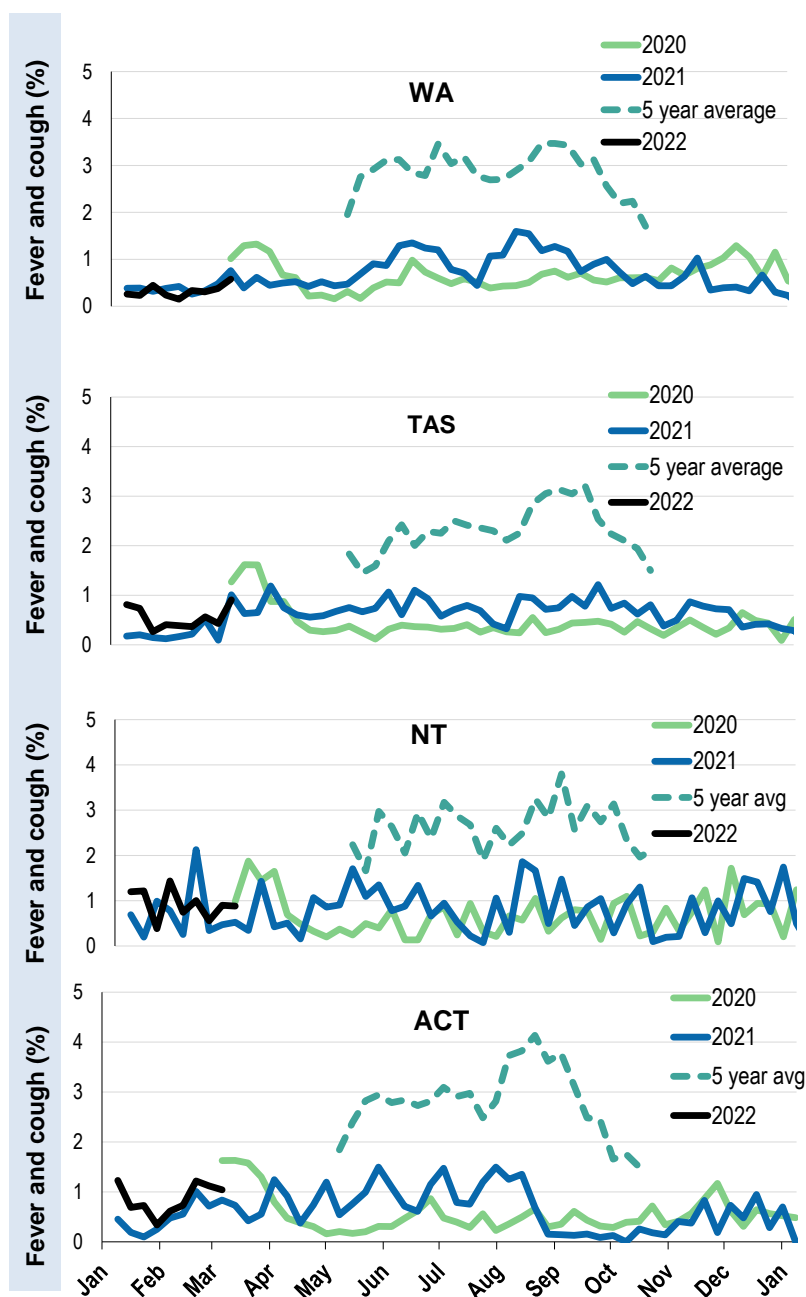


Respiratory illness activity by state/territory (age standardised):



*5 year average is calculated using 2015, 2016, 2017, 2018 and 2019 data

Respiratory illness activity by state/territory (age standardised):



*5 year average is calculated using 2015, 2016, 2017, 2018 and 2019 data

Participation:
57,782 participants (57,529 last week)

State	Participants	% Rate/100,000 population
NSW	20034	34.7% 253.7
VIC	11519	19.9% 181.1
QLD	7126	12.3% 144.0
SA	5149	8.9% 298.2
WA	5840	10.1% 225.7
TAS	3804	6.6% 728.7
NT	970	1.7% 394.1
ACT	3340	5.8% 809.5
AUS	57782	100.0% 233.9

Vaccination rates:

Vaccinated participants:	COVID-19 vaccine		
	At least 1 dose (%)	At least 2 doses (%)	3 doses (%)
<5 years			
5-11 years	86.8	6.0	0.1
12-17 years	97.9	94.6	18.0
18-64 years	99.3	99.0	89.6
65+ years	99.4	99.3	96.0
Working with patients	99.6	99.4	94.8
Aboriginal and/or Torres Strait Islander	93.8	87.4	68.1
Vaccinated overall (%)	97.5	93.9	84.0

*Influenza vaccination data is excluded until the 2022 influenza vaccine is released in Australia