

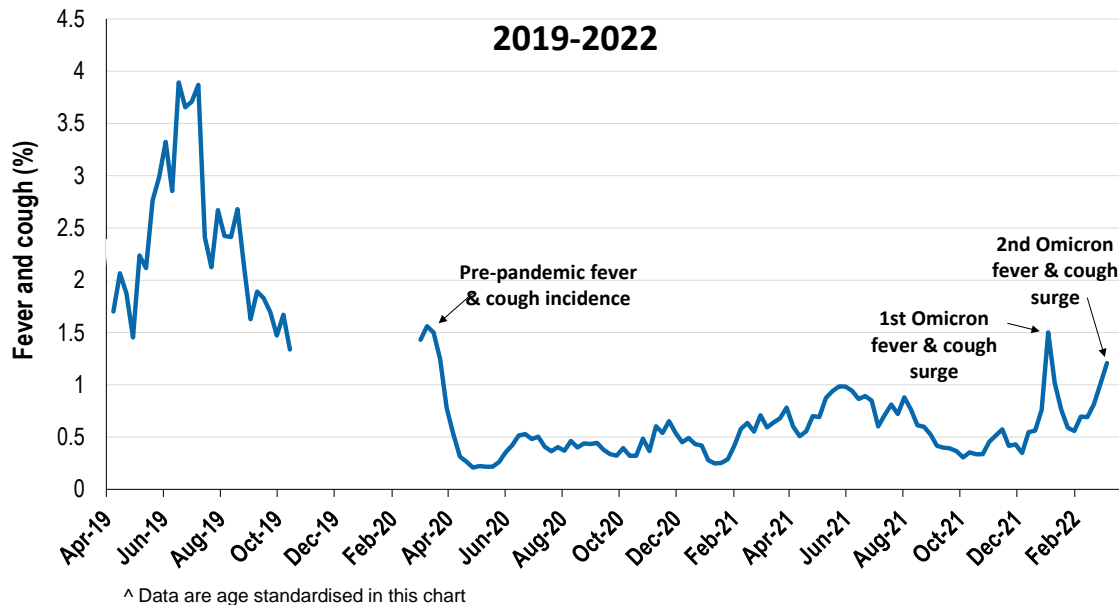
Respiratory illness levels are low, but increasing across all age groups

57,692 participants this week

Respiratory illness activity*:

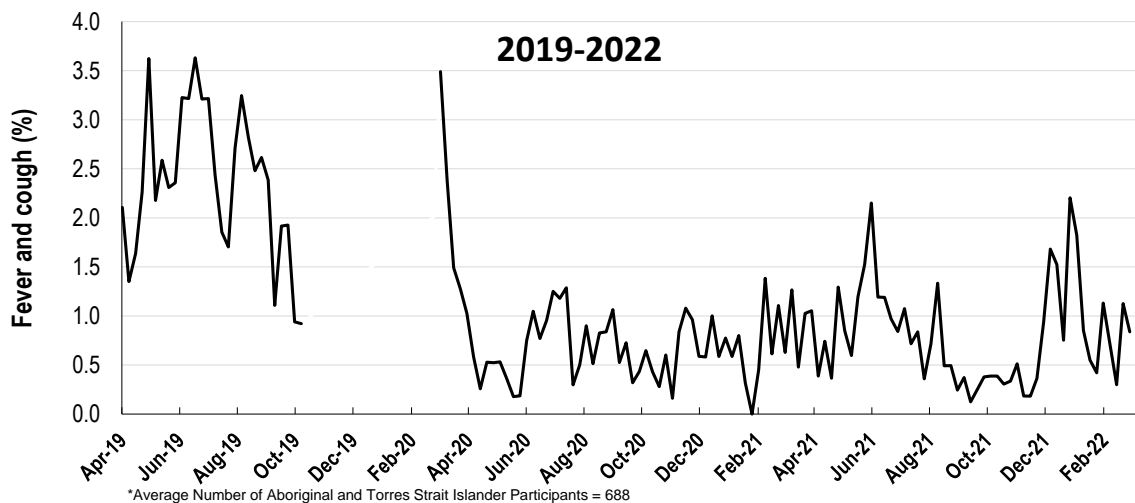
*Respiratory illness activity is defined as fever & cough for this report

1.2% this week: respiratory illness activity is low



Respiratory illness activity among Aboriginal and Torres Strait Islander participants

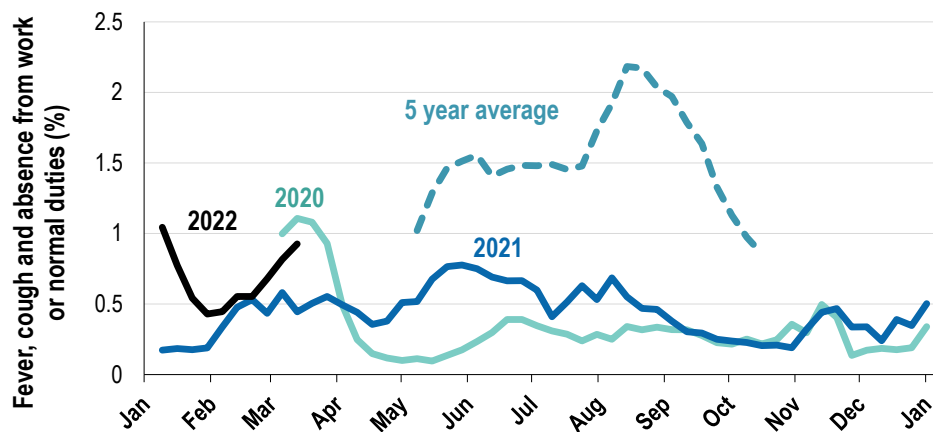
0.8% this week: respiratory illness activity is low



Respiratory illness severity: 42.6% of participants with fever and cough sought medical advice this week		
Respiratory illness Severity	Week ending 13 March 2022 number (%)	Week ending 06 March 2022 number (%)
Number of participants	57692 (100%)	57782 (100%)
Fever & cough	474 (0.8%)	403 (0.7%)
Fever, cough & time-off normal duties	359 (0.6%)	304 (0.5%)
Fever, cough & 3 or more days off work/normal duties	359 (0.6%)	304 (0.5%)
Number of participants with fever and cough	474 (100%)	403 (100%)
*Sought medical advice for fever and cough	202 (42.6%)	179 (44.4%)
Admitted to hospital	5 (1.1%)	9 (2.2%)
Tested for influenza	15 (3.2%)	5 (1.2%)
Tested, result positive for influenza	4 (0.8%)	0 (0%)
Tested for COVID-19 by PCR	205 (43.2%)	146 (36.2%)
Tested for COVID-19 by PCR, result positive	110 (23.2%)	90 (22.3%)
Tested for COVID-19 by RAT	406 (85.7%)	346 (85.9%)
Tested for COVID-19 by RAT, result positive	187 (39.5%)	165 (40.9%)

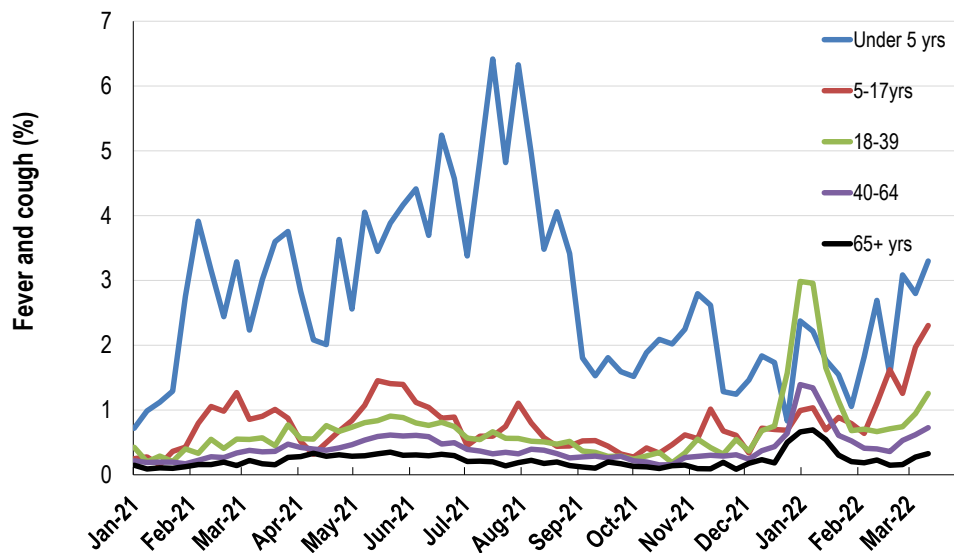
*Includes those who sought medical advice from a general practitioner, COVID-19 clinic, emergency department, or were admitted to hospital for fever & cough

Fever, cough and absence from work or normal duties (Australia):

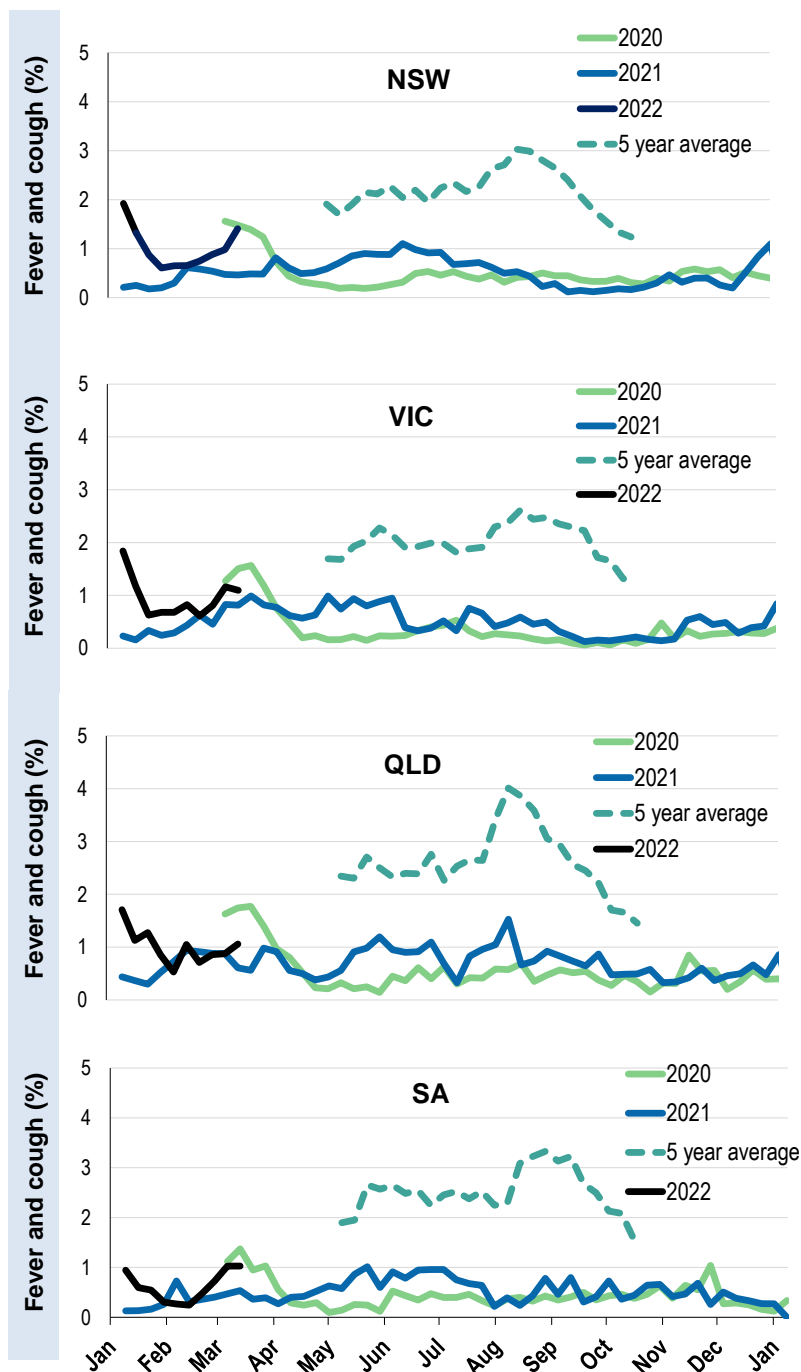


*5 year average is calculated using 2015, 2016, 2017, 2018 and 2019 data

Respiratory illness activity by age group in 2021 and 2022 (Australia):

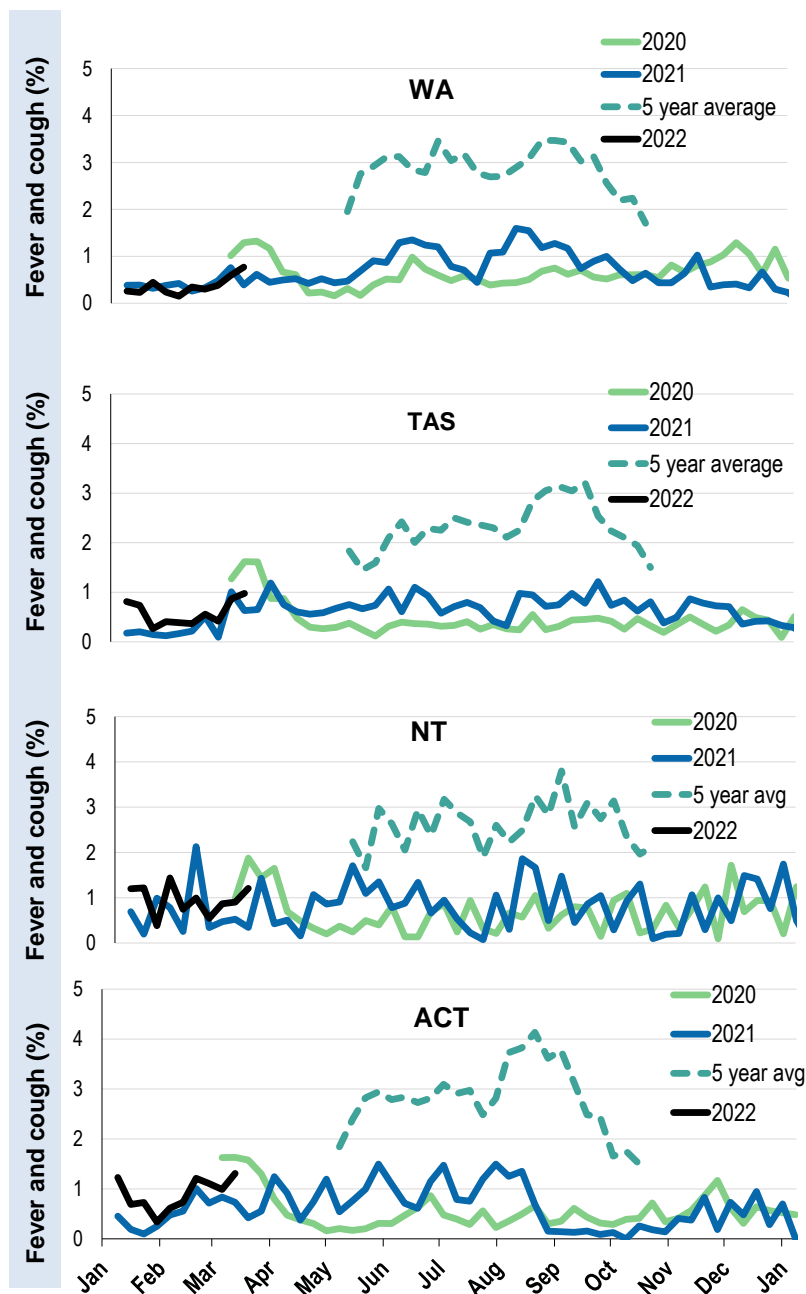


Respiratory illness activity by state/territory (age standardised):



*5 year average is calculated using 2015, 2016, 2017, 2018 and 2019 data

Respiratory illness activity by state/territory (age standardised):



*5 year average is calculated using 2015, 2016, 2017, 2018 and 2019 data

Participation:
57,692 participants (57,782 last week)

State	Participants	%	Rate/100,000 population
NSW	20127	34.9%	254.9
VIC	11327	19.6%	178.1
QLD	7170	12.4%	144.9
SA	5120	8.9%	296.5
WA	5972	10.4%	230.8
TAS	3763	6.5%	720.9
NT	971	1.7%	394.6
ACT	3242	5.6%	785.7
AUS	57692	100.0%	233.5

Vaccination rates:

Vaccinated participants:	COVID-19 vaccine		
	At least 1 dose (%)	At least 2 doses (%)	3 doses (%)
<5 years			
5-11 years	86.9	26.3	0.1
12-17 years	97.6	94.8	19.5
18-64 years	99.3	98.9	90.2
65+ years	99.4	99.2	96.2
Working with patients	99.6	99.4	95.4
Aboriginal and/or Torres Strait Islander	93.1	88.6	66.8
Vaccinated overall (%)	97.4	94.6	84.4

*Influenza vaccination data is excluded until the 2022 influenza vaccine is released in Australia

