

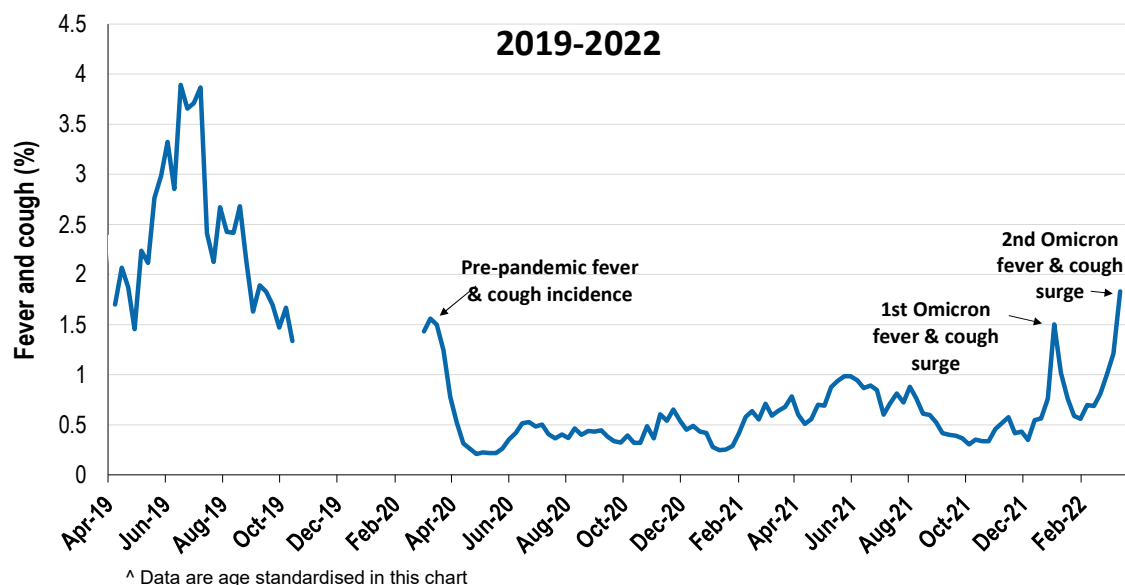
Respiratory illness levels are low, but increasing in school aged children (5-17 yrs)

57,524 participants this week

Respiratory illness activity*:

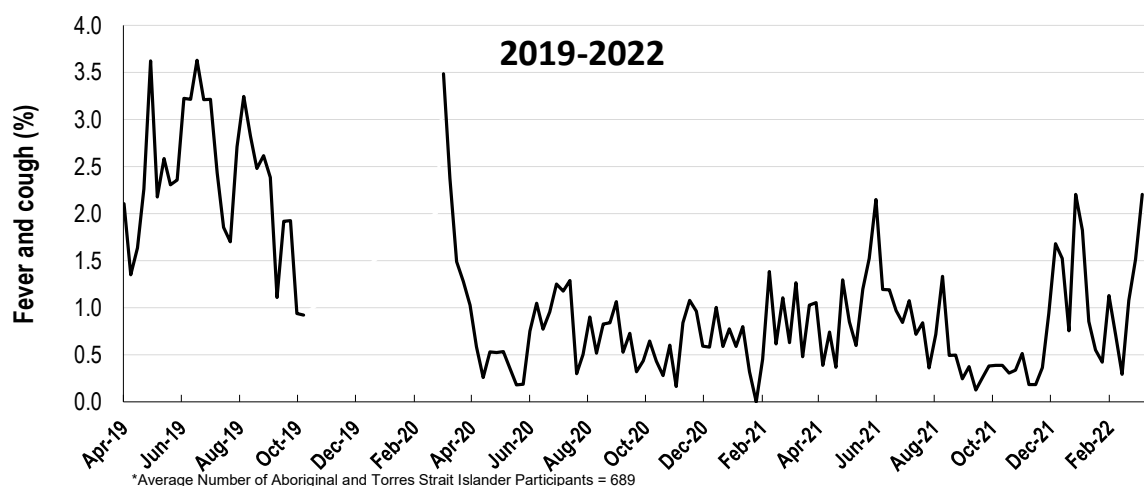
*Respiratory illness activity is defined as fever & cough for this report

1.8% this week: respiratory illness activity is low



Respiratory illness activity among Aboriginal and Torres Strait Islander participants

2.2% this week: respiratory illness activity is low

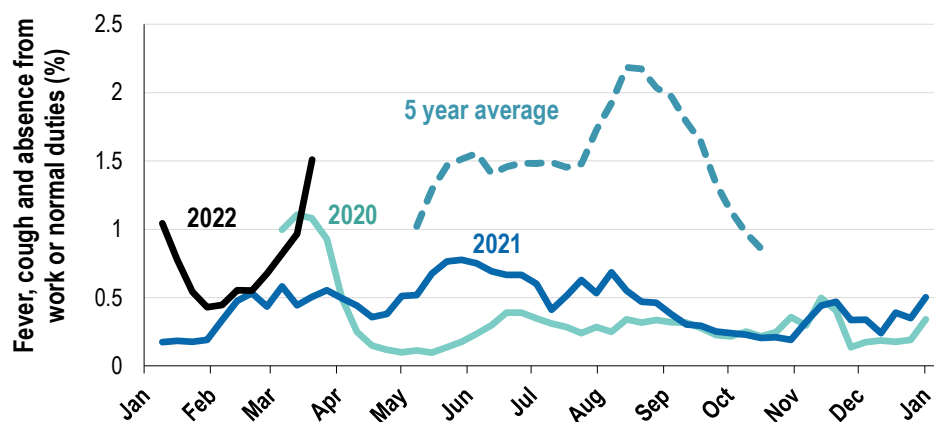


Respiratory illness severity:
39.8% of participants with fever and cough sought medical advice this week

Respiratory illness Severity	Week ending 20 March 2022 number (%)	Week ending 13 March 2022 number (%)
Number of participants	57524 (100%)	57692 (100%)
Fever & cough	738 (1.3%)	474 (0.8%)
Fever, cough & time-off normal duties	586 (1%)	379 (0.7%)
Fever, cough & 3 or more days off work/normal duties	586 (1%)	379 (0.7%)
Number of participants with fever and cough	738 (100%)	474 (100%)
*Sought medical advice for fever and cough	294 (39.8%)	215 (45.4%)
Admitted to hospital	2 (0.3%)	6 (1.3%)
Tested for influenza	14 (1.9%)	16 (3.4%)
Tested, result positive for influenza	2 (0.3%)	4 (0.8%)
Tested for COVID-19 by PCR	295 (40%)	219 (46.2%)
Tested for COVID-19 by PCR, result positive	163 (22.1%)	114 (24.1%)
Tested for COVID-19 by RAT	648 (87.8%)	412 (86.9%)
Tested for COVID-19 by RAT, result positive	331 (44.9%)	196 (41.4%)

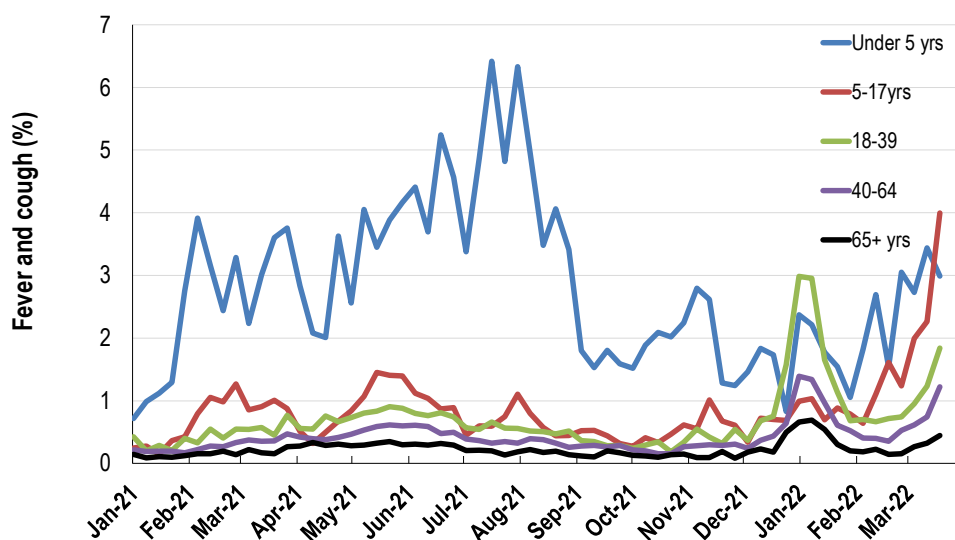
*Includes those who sought medical advice from a general practitioner, COVID-19 clinic, emergency department, or were admitted to hospital for fever & cough

Fever, cough and absence from work or normal duties (Australia):

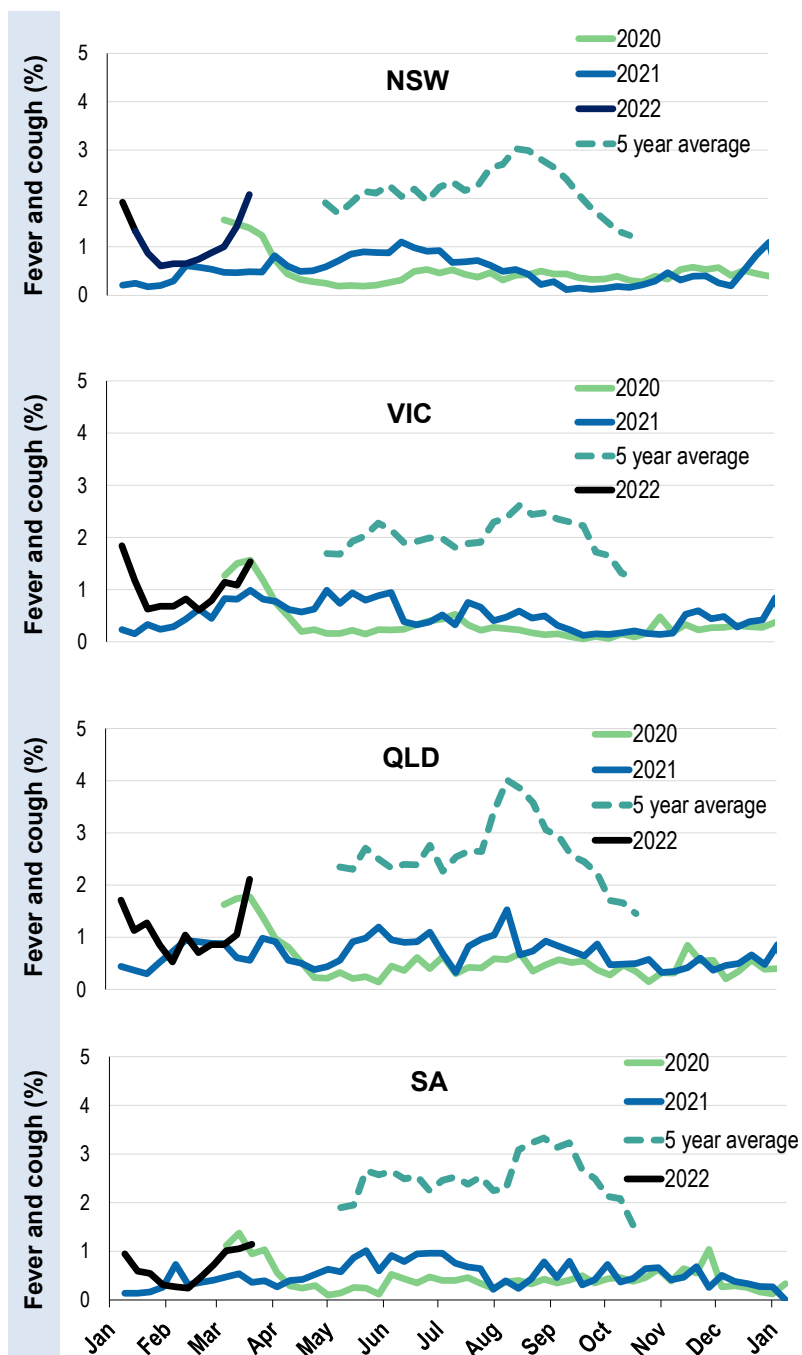


*5 year average is calculated using 2015, 2016, 2017, 2018 and 2019 data

Respiratory illness activity by age group in 2021 and 2022 (Australia):

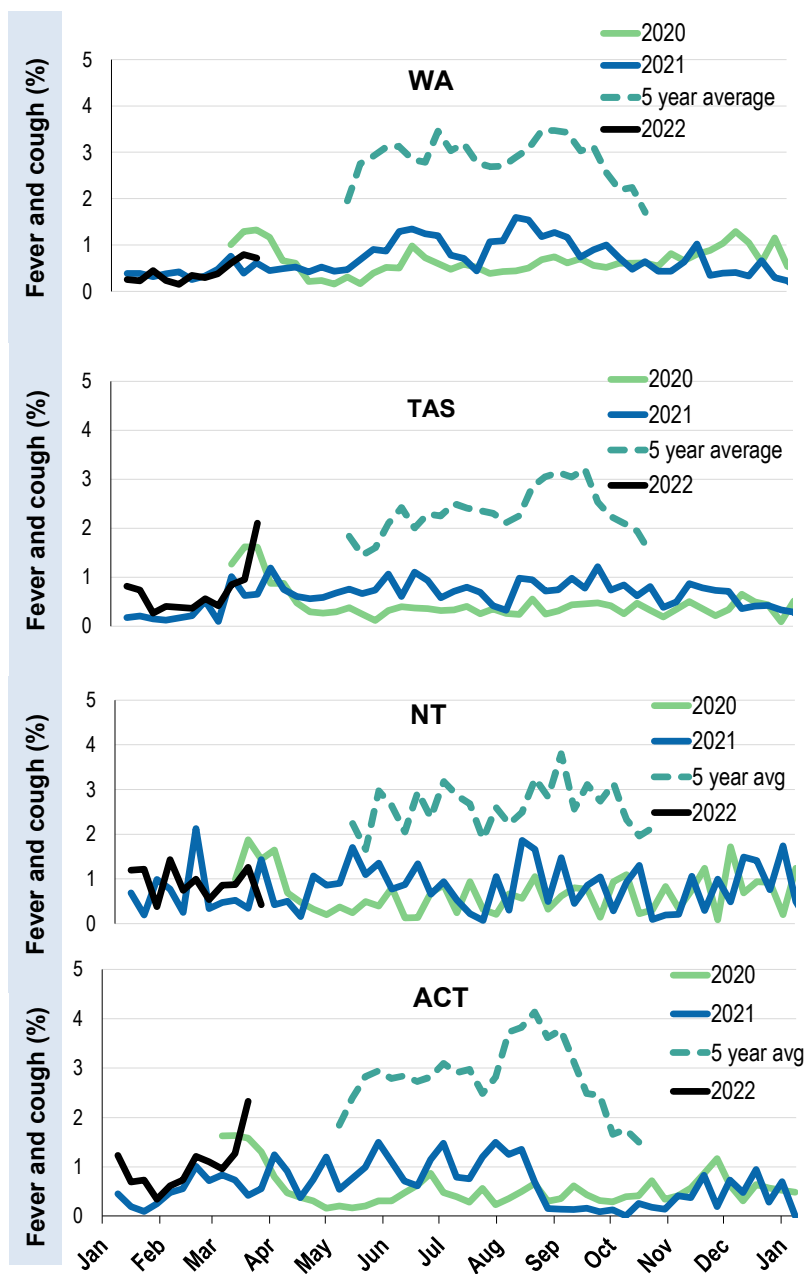


Respiratory illness activity by state/territory (age standardised):



*5 year average is calculated using 2015, 2016, 2017, 2018 and 2019 data

Respiratory illness activity by state/territory (age standardised):



*5 year average is calculated using 2015, 2016, 2017, 2018 and 2019 data

Participation:
57,524 participants (57,692 last week)

State	Participants	%	Rate/100,000 population
NSW	20008	34.8%	253.4
VIC	11373	19.8%	178.9
QLD	7068	12.3%	142.8
SA	5117	8.9%	296.3
WA	5980	10.4%	231.1
TAS	3752	6.5%	718.8
NT	947	1.6%	384.8
ACT	3279	5.7%	794.7
AUS	57524	100.0%	232.9

Vaccination rates:

Vaccinated participants:	COVID-19 vaccine			Influenza (%)
	At least 1 dose (%)	At least 2 doses (%)	3 doses (%)	
<5 years				0.0
5-11 years	87.2	45.9	0.1	0.0
12-17 years	98.0	95.4	19.6	0.0
18-64 years	99.3	98.9	90.7	0.0
65+ years	99.4	99.3	96.5	0.1
Working with patients	99.5	99.2	95.3	
Aboriginal and/or Torres Strait Islander	93.2	89.5	65.6	0.1
Vaccinated overall (%)	97.5	95.5	84.9	0.2

*Influenza vaccination data is excluded until the 2022 influenza vaccine is released in Australia

