

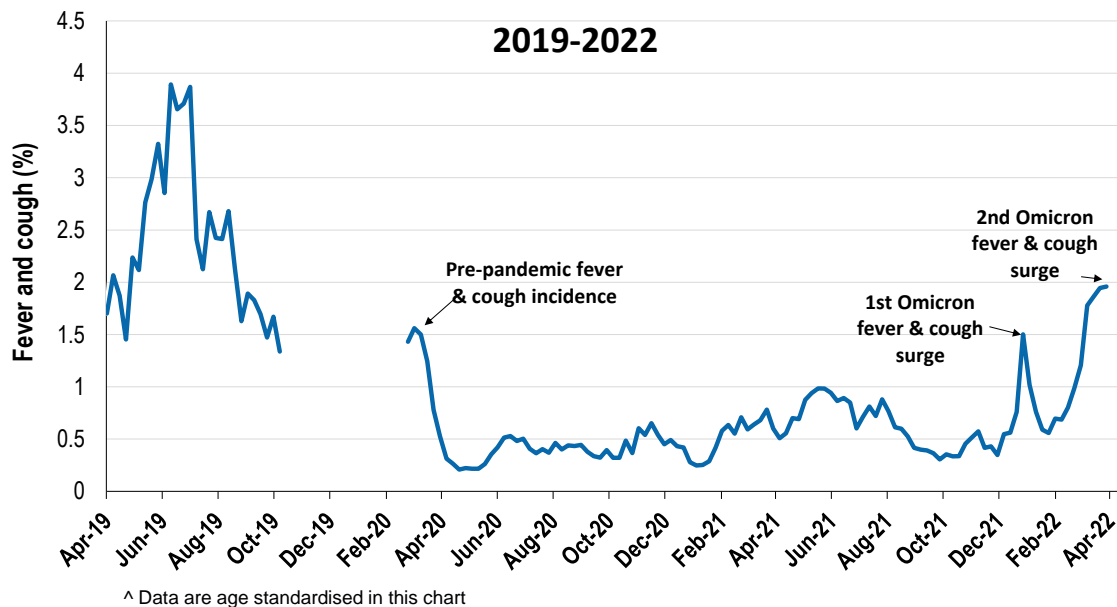
Respiratory illness levels are low, and the increase in respiratory illness rates associated with the 2nd Omicron surge is slowing

56,803 participants this week

Respiratory illness activity*:

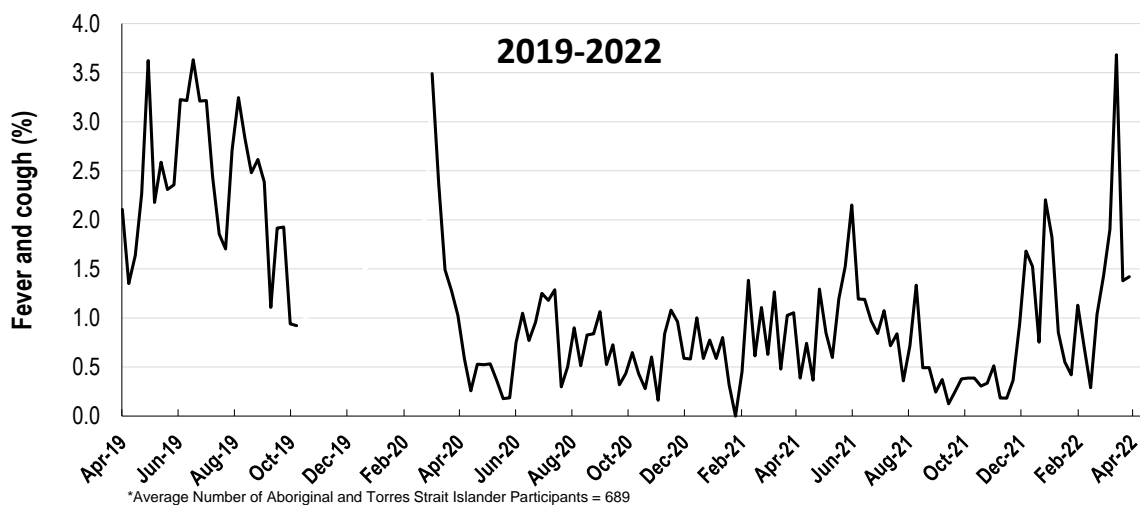
*Respiratory illness activity is defined as fever & cough for this report

2% this week: respiratory illness activity is low



Respiratory illness activity among Aboriginal and Torres Strait Islander participants

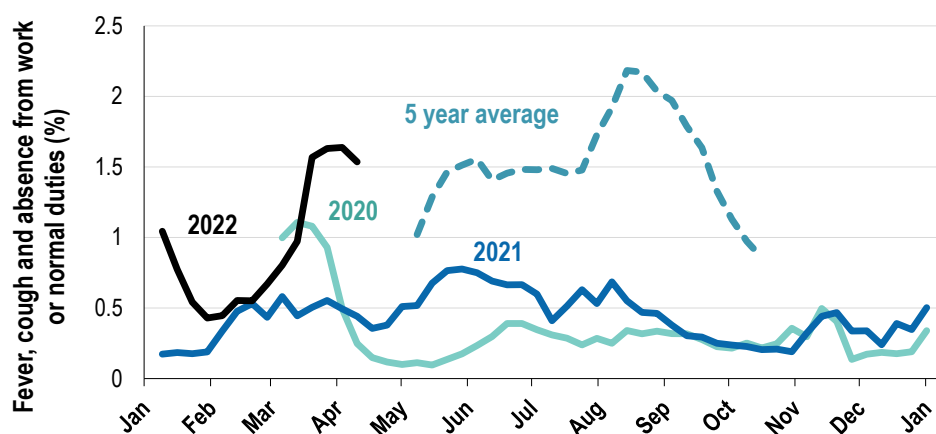
1.4% this week: respiratory illness activity is low



Respiratory illness severity: 37.5% of participants with fever and cough sought medical advice this week		
Respiratory illness Severity	Week ending 10 April 2022 number (%)	Week ending 03 April 2022 number (%)
Number of participants	56803 (100%)	57709 (100%)
Fever & cough	877 (1.5%)	812 (1.4%)
Fever, cough & time-off normal duties	658 (1.2%)	668 (1.2%)
Fever, cough & 3 or more days off work/normal duties	658 (1.2%)	668 (1.2%)
Number of participants with fever and cough	877 (100%)	812 (100%)
*Sought medical advice for fever and cough	329 (37.5%)	313 (38.5%)
Admitted to hospital	6 (0.7%)	1 (0.1%)
Tested for influenza	20 (2.3%)	18 (2.2%)
Tested, result positive for influenza	1 (0.1%)	1 (0.1%)
Tested for COVID-19 by PCR	319 (36.4%)	305 (37.6%)
Tested for COVID-19 by PCR, result positive	196 (22.3%)	200 (24.6%)
Tested for COVID-19 by RAT	768 (87.6%)	726 (89.4%)
Tested for COVID-19 by RAT, result positive	448 (51.1%)	436 (53.7%)

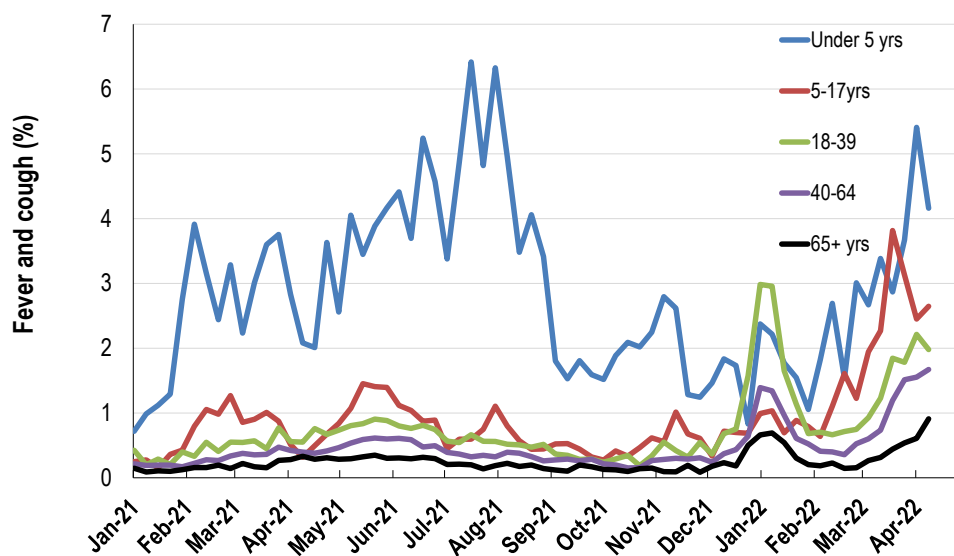
*Includes those who sought medical advice from a general practitioner, COVID-19 clinic, emergency department, or were admitted to hospital for fever & cough

Fever, cough and absence from work or normal duties (Australia):

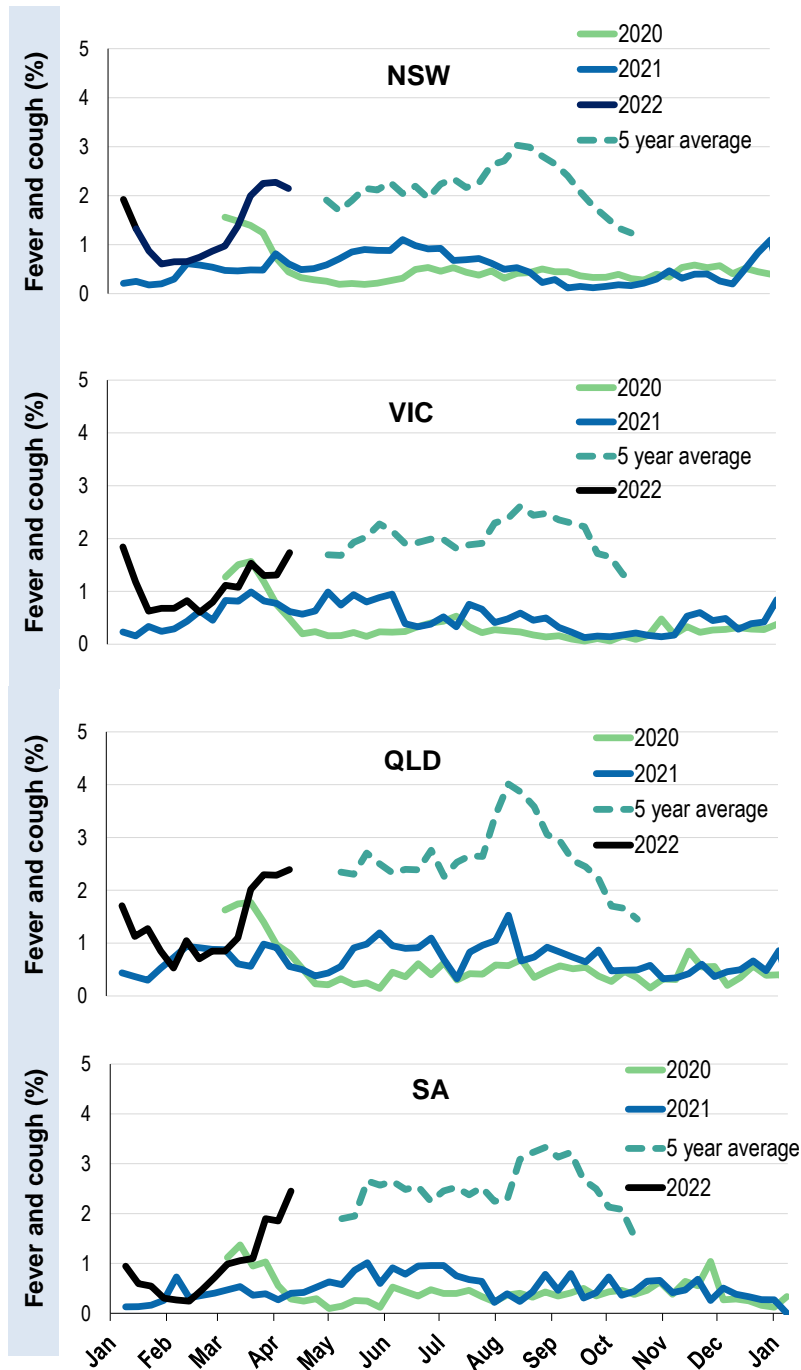


*5 year average is calculated using 2015, 2016, 2017, 2018 and 2019 data

Respiratory illness activity by age group in 2021 and 2022 (Australia):

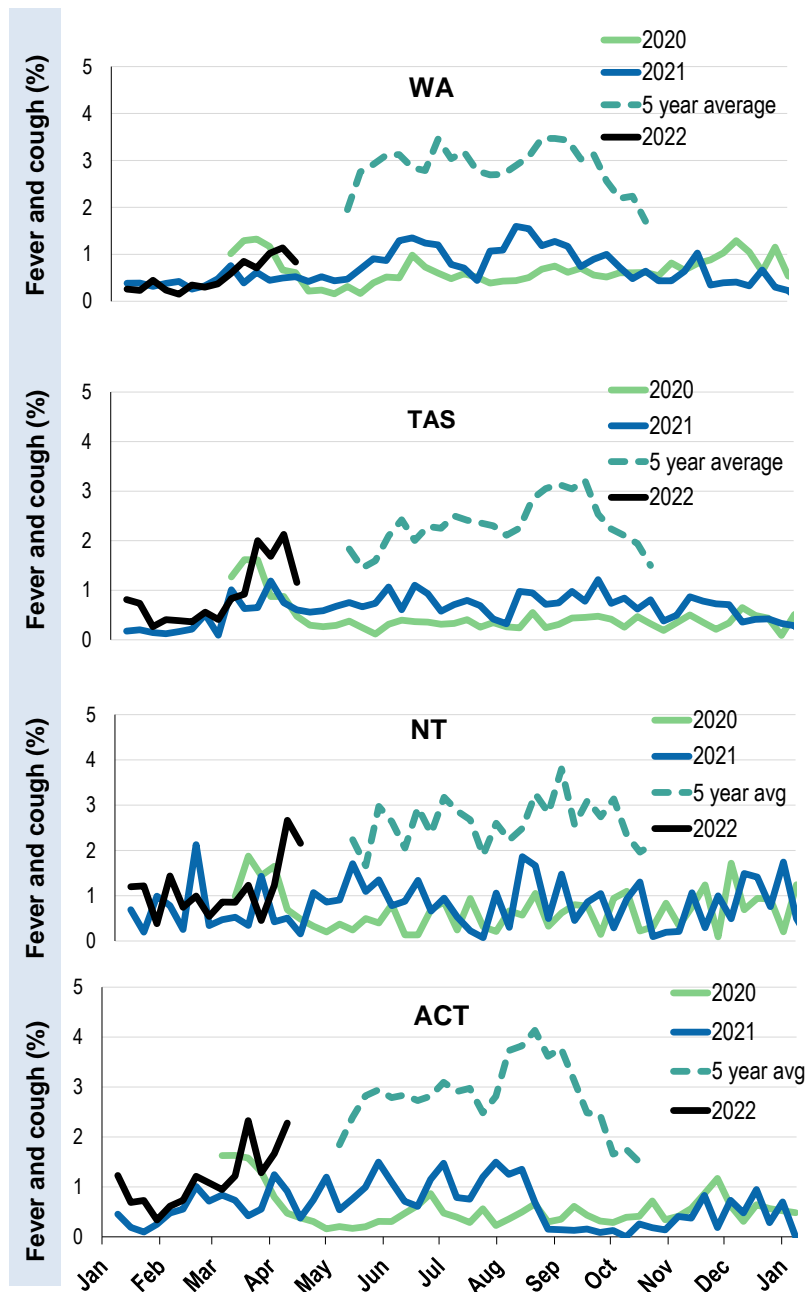


Respiratory illness activity by state/territory (age standardised):



*5 year average is calculated using 2015, 2016, 2017, 2018 and 2019 data

Respiratory illness activity by state/territory (age standardised):



*5 year average is calculated using 2015, 2016, 2017, 2018 and 2019 data

Participation:
56,803 participants (57,709 last week)

State	Participants	%	Rate/100,000 population
NSW	19439	34.2%	246.2
VIC	11352	20.0%	178.5
QLD	7042	12.4%	142.3
SA	5164	9.1%	299.0
WA	5895	10.4%	227.9
TAS	3731	6.6%	714.8
NT	911	1.6%	370.2
ACT	3269	5.8%	792.3
AUS	56803	100.0%	229.9

Vaccination rates:

Vaccinated participants:	COVID-19 vaccine			Influenza (%)
	At least 1 dose (%)	At least 2 doses (%)	3 doses (%)	
<5 years				1.9
5-11 years	88.4	68.9	0.5	1.5
12-17 years	97.8	96.0	22.8	1.9
18-64 years	99.3	99.0	92.1	8.1
65+ years	99.4	99.3	97.0	11.3
Working with patients	99.6	99.4	96.1	7.9
Aboriginal and/or Torres Strait Islander	92.4	90.6	68.7	5.5
Vaccinated overall (%)	97.6	96.6	86.5	8.7

*Influenza vaccination data is excluded until the 2022 influenza vaccine is released in Australia

