

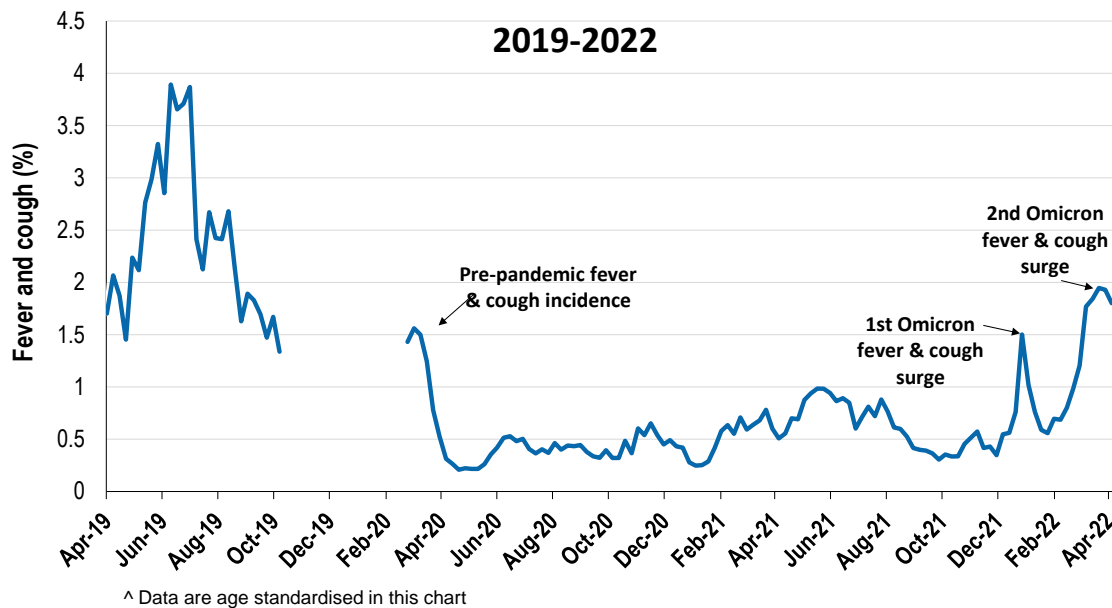
## Respiratory illness levels are low and trending downwards

**56,034 participants this week**

### Respiratory illness activity\*:

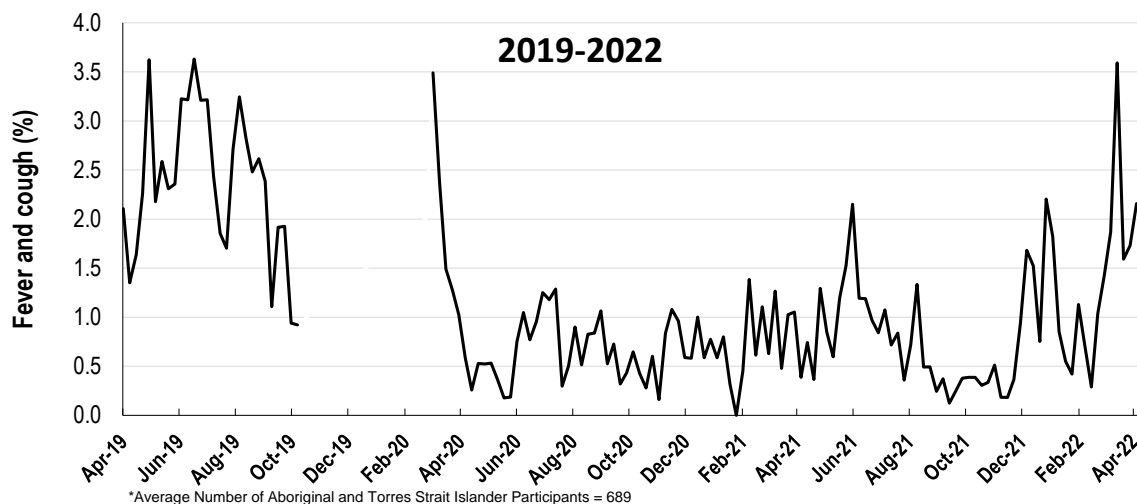
\*Respiratory illness activity is defined as fever & cough for this report

**1.8% this week: respiratory illness activity is low**



### Respiratory illness activity among Aboriginal and Torres Strait Islander participants

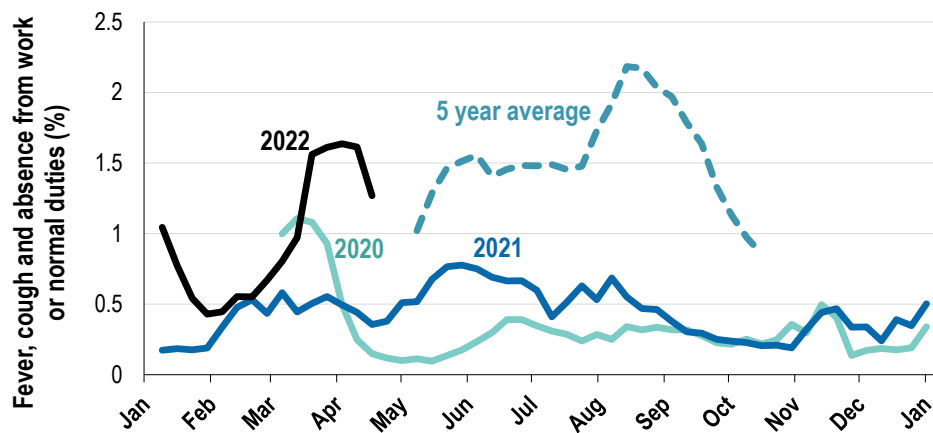
**2.2% this week: respiratory illness activity is low**



Respiratory illness severity:		
33.4% of participants with fever and cough sought medical advice this week		
Respiratory illness Severity	Week ending 17 April 2022 number (%)	Week ending 10 April 2022 number (%)
<b>Number of participants</b>	56034 (100%)	56803 (100%)
Fever & cough	799 (1.4%)	876 (1.5%)
Fever, cough & time-off normal duties	548 (1%)	701 (1.2%)
Fever, cough & 3 or more days off work/normal duties	393 (0.7%)	545 (1%)
<b>Number of participants with fever and cough</b>	799 (100%)	876 (100%)
*Sought medical advice for fever and cough	267 (33.4%)	346 (39.5%)
Admitted to hospital	7 (0.9%)	8 (0.9%)
Tested for influenza	16 (2%)	24 (2.7%)
Tested, result positive for influenza	9 (1.1%)	2 (0.2%)
Tested for COVID-19 by PCR	272 (34%)	338 (38.6%)
Tested for COVID-19 by PCR, result positive	165 (20.7%)	212 (24.2%)
Tested for COVID-19 by RAT	688 (86.1%)	777 (88.7%)
Tested for COVID-19 by RAT, result positive	388 (48.6%)	464 (53%)

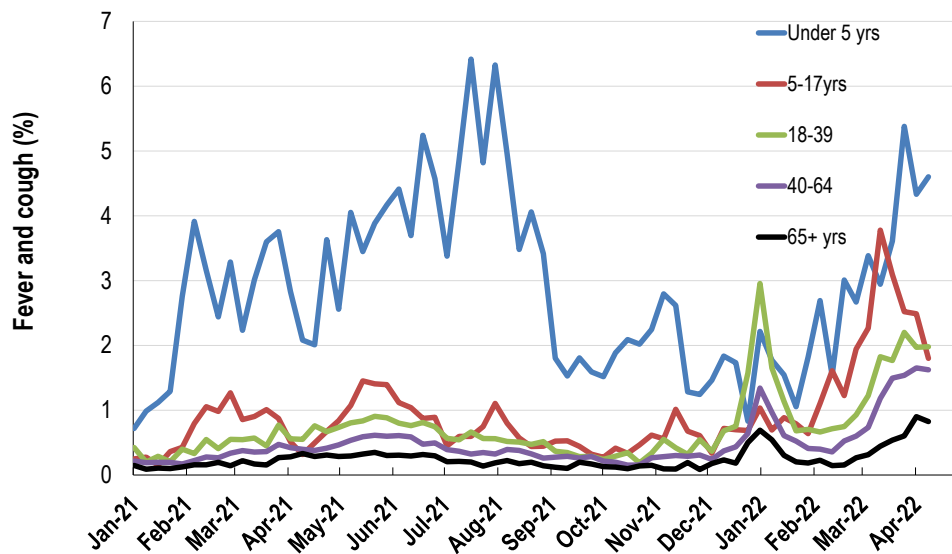
\*Includes those who sought medical advice from a general practitioner, COVID-19 clinic, emergency department, or were admitted to hospital for fever & cough

**Fever, cough and absence from work or normal duties (Australia):**

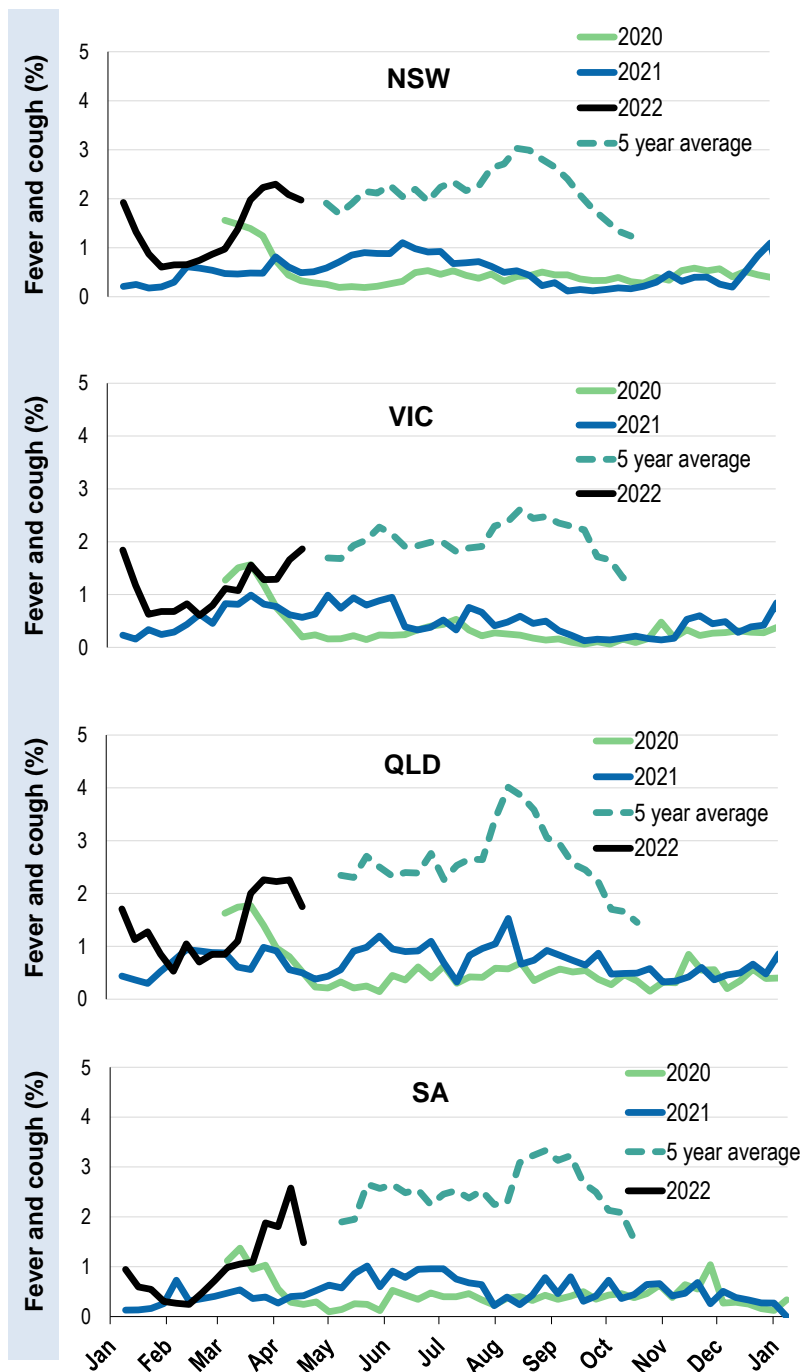


\*5 year average is calculated using 2015, 2016, 2017, 2018 and 2019 data

**Respiratory illness activity by age group in 2021 and 2022 (Australia):**

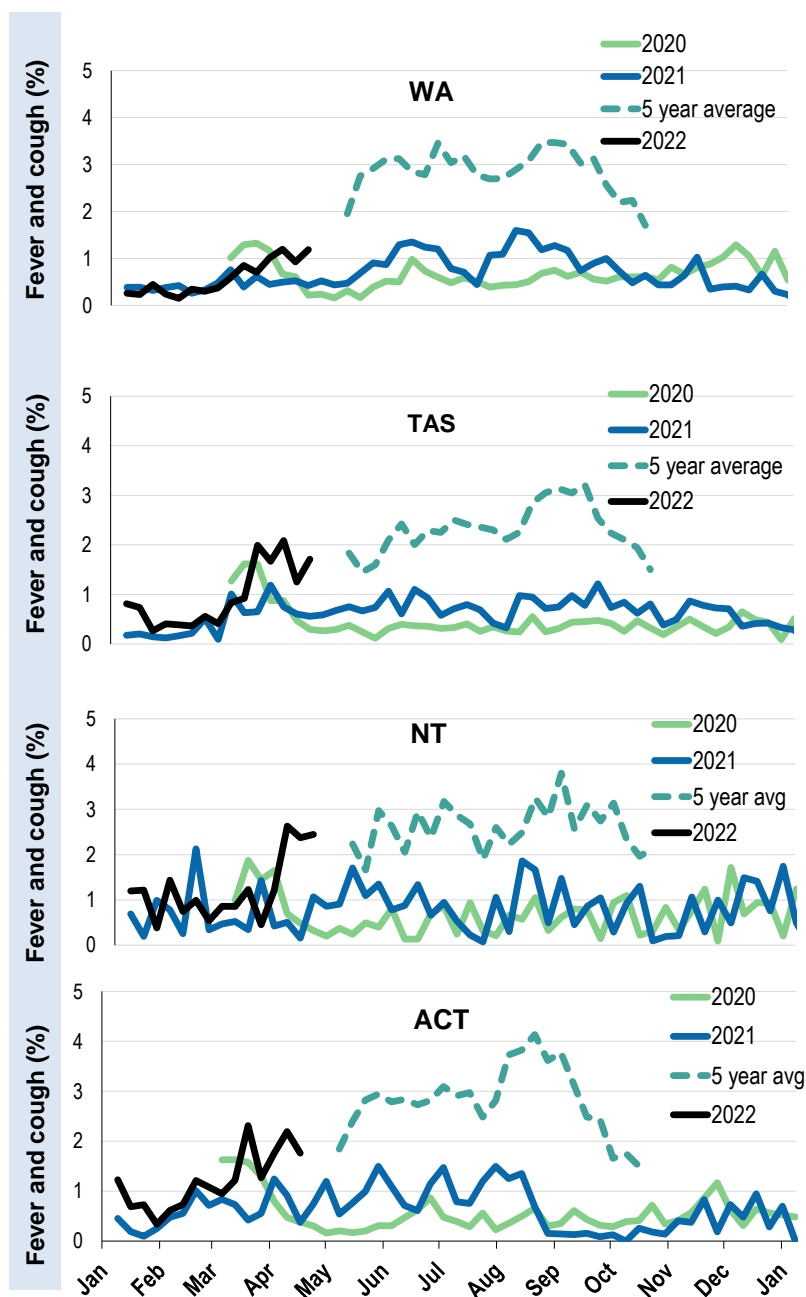


**Respiratory illness activity by state/territory (age standardised):**



\*5 year average is calculated using 2015, 2016, 2017, 2018 and 2019 data

Respiratory illness activity by state/territory (age standardised):



\*5 year average is calculated using 2015, 2016, 2017, 2018 and 2019 data

**Participation:**
**56,034 participants (56,803 last week)**

State	Participants	% Rate/100,000 population
NSW	19429	34.7% <b>246.1</b>
VIC	11259	20.1% <b>177.1</b>
QLD	7191	12.8% <b>145.3</b>
SA	4900	8.7% <b>283.7</b>
WA	5712	10.2% <b>220.8</b>
TAS	3392	6.1% <b>649.8</b>
NT	873	1.6% <b>354.7</b>
ACT	3278	5.9% <b>794.5</b>
AUS	56034	100.0% <b>226.8</b>

**Vaccination rates:**

Vaccinated participants:	COVID-19 vaccine			Influenza (%)
	At least 1 dose (%)	At least 2 doses (%)	3 doses (%)	
<5 years				4.0
5-11 years	88.5	71.9	0.5	3.9
12-17 years	97.9	96.0	23.1	4.8
18-64 years	99.3	98.9	92.5	12.9
65+ years	99.4	99.3	97.1	19.7
Working with patients	99.6	99.2	96.3	13.6
Aboriginal and/or Torres Strait Islander	93.5	91.2	70.5	11.5
<b>Vaccinated overall (%)</b>	<b>97.6</b>	<b>96.7</b>	<b>86.9</b>	<b>14.6</b>

\*Influenza vaccination data is excluded until the 2022 influenza vaccine is released in Australia