

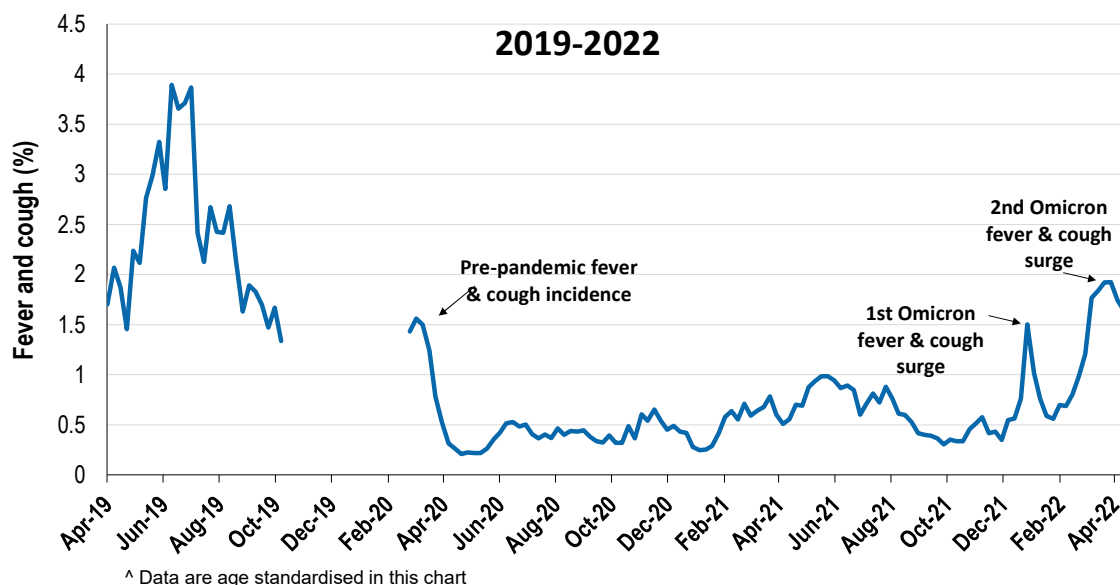
Respiratory illness levels are low and trending downwards

57,421 participants this week

Respiratory illness activity*:

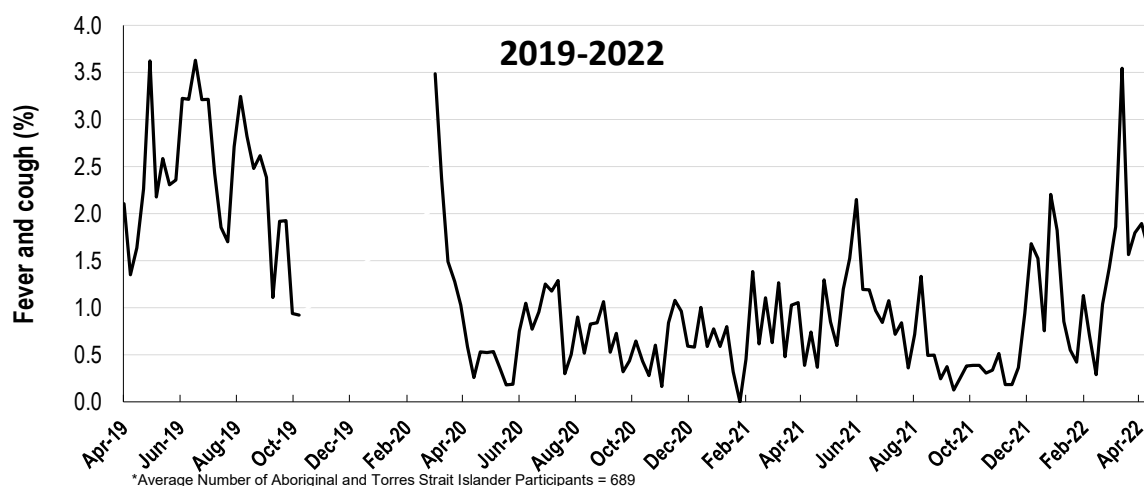
*Respiratory illness activity is defined as fever & cough for this report

1.6% this week: respiratory illness activity is low



Respiratory illness activity among Aboriginal and Torres Strait Islander participants

1.6% this week: respiratory illness activity is low

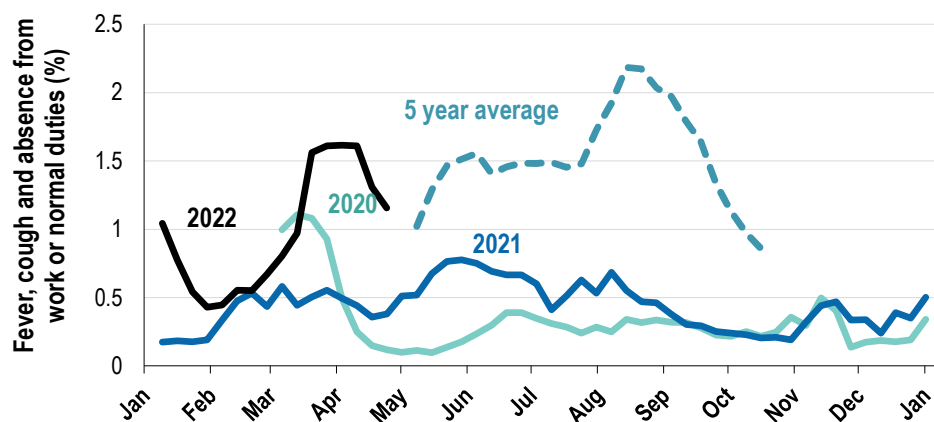


Respiratory illness severity:
32.9% of participants with fever and cough sought medical advice this week

Respiratory illness Severity	Week ending 24 April 2022 number (%)	Week ending 17 April 2022 number (%)
Number of participants	57421 (100%)	56034 (100%)
Fever & cough	781 (1.4%)	799 (1.4%)
Fever, cough & time-off normal duties	543 (0.9%)	583 (1%)
Fever, cough & 3 or more days off work/normal duties	395 (0.7%)	441 (0.8%)
Number of participants with fever and cough	781 (100%)	799 (100%)
*Sought medical advice for fever and cough	257 (32.9%)	289 (36.2%)
Admitted to hospital	4 (0.5%)	8 (1%)
Tested for influenza	20 (2.6%)	21 (2.6%)
Tested, result positive for influenza	7 (0.9%)	11 (1.4%)
Tested for COVID-19 by PCR	263 (33.7%)	285 (35.7%)
Tested for COVID-19 by PCR, result positive	161 (20.6%)	172 (21.5%)
Tested for COVID-19 by RAT	677 (86.7%)	695 (87%)
Tested for COVID-19 by RAT, result positive	397 (50.8%)	397 (49.7%)

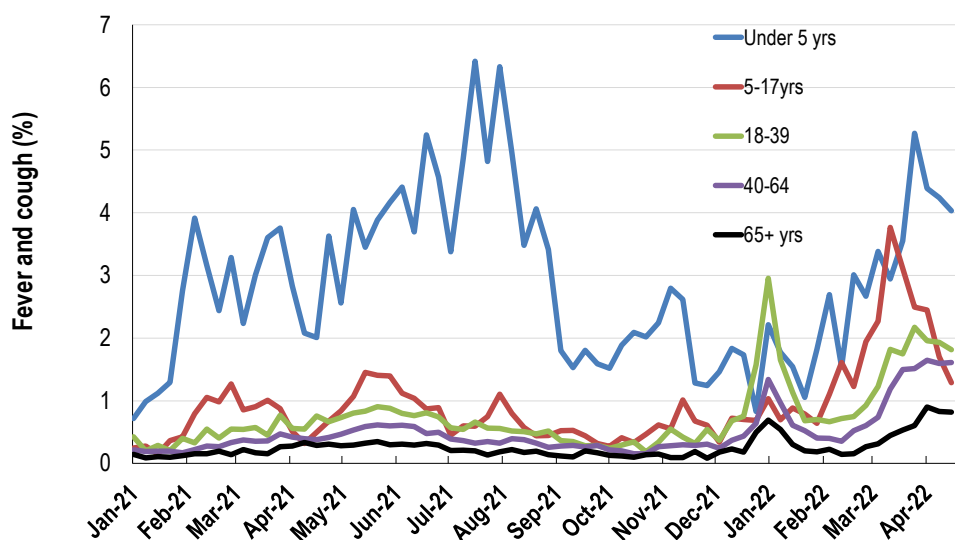
*Includes those who sought medical advice from a general practitioner, COVID-19 clinic, emergency department, or were admitted to hospital for fever & cough

Fever, cough and absence from work or normal duties (Australia):

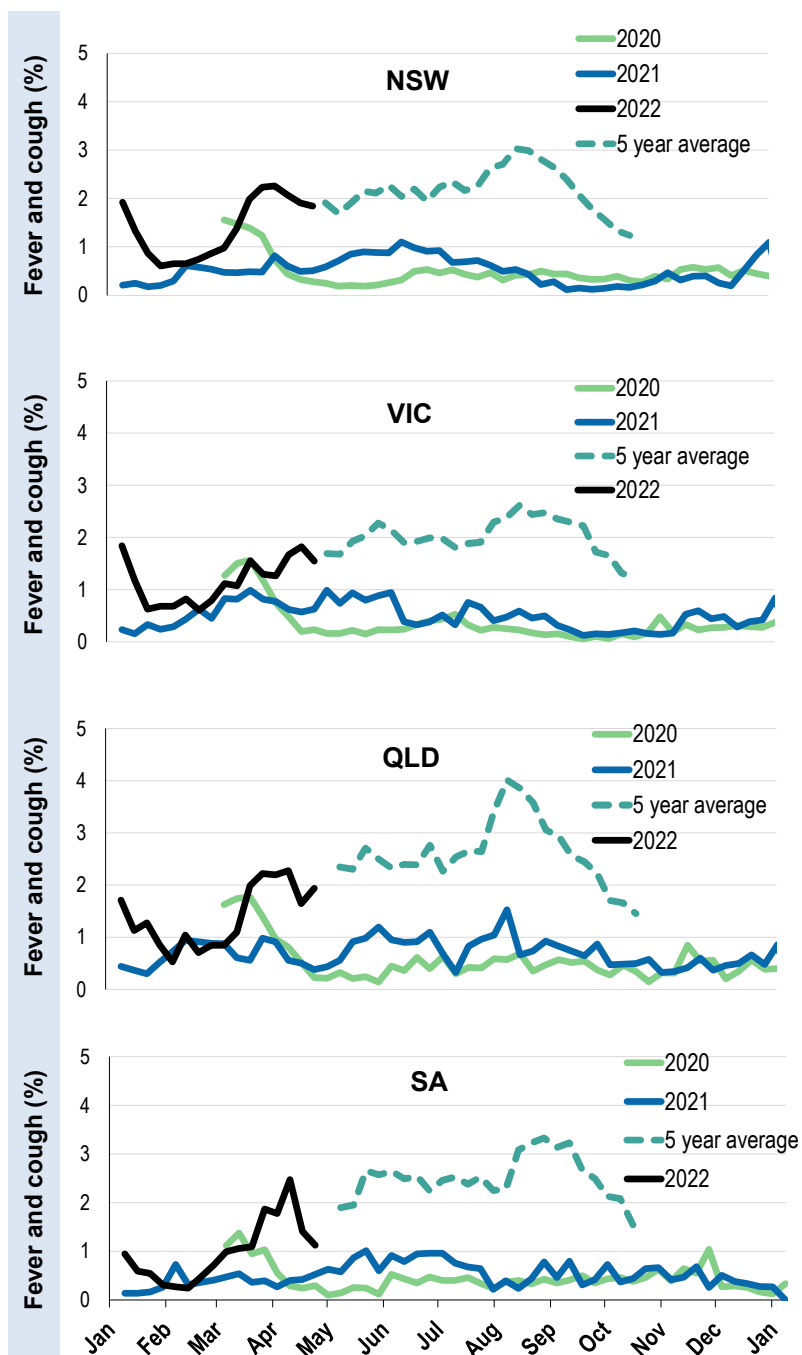


*5 year average is calculated using 2015, 2016, 2017, 2018 and 2019 data

Respiratory illness activity by age group in 2021 and 2022 (Australia):

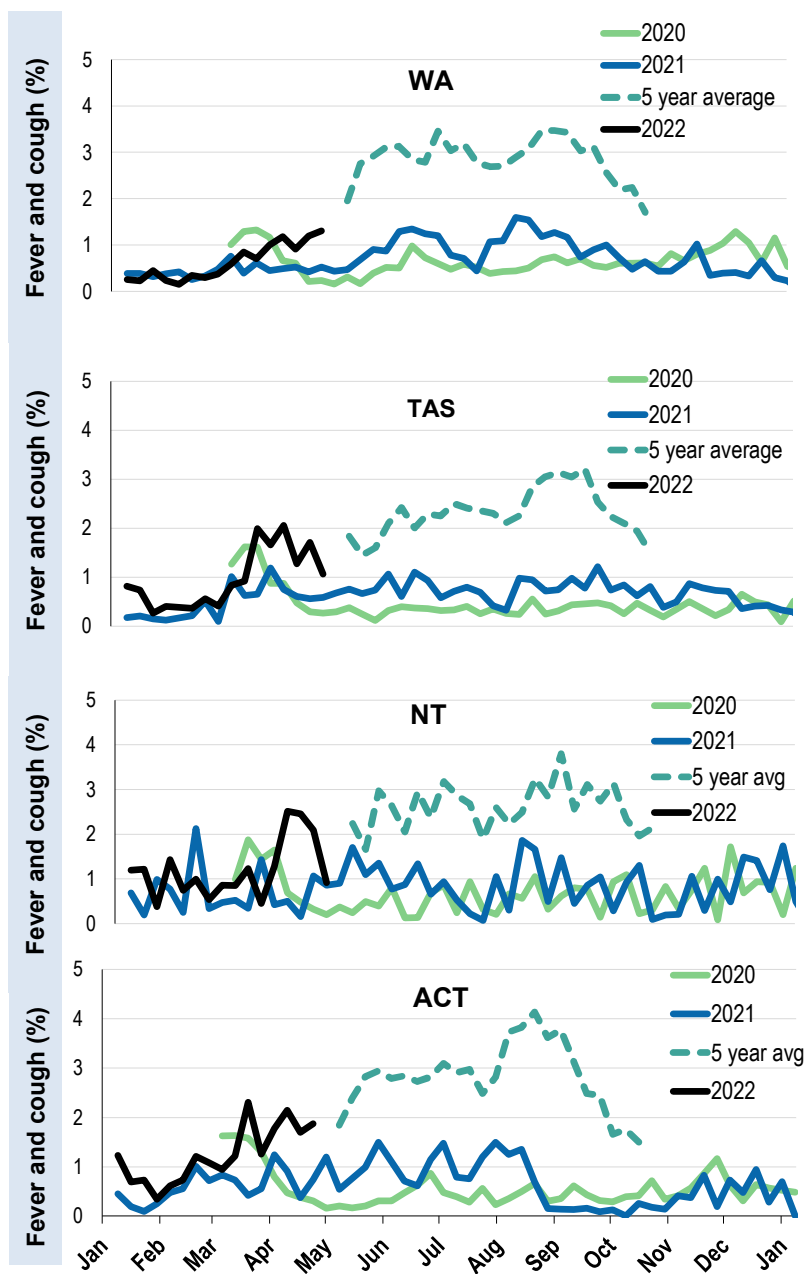


Respiratory illness activity by state/territory (age standardised):



*5 year average is calculated using 2015, 2016, 2017, 2018 and 2019 data

Respiratory illness activity by state/territory (age standardised):



*5 year average is calculated using 2015, 2016, 2017, 2018 and 2019 data

Participation:
57,421 participants (56,034 last week)

State	Participants	%	Rate/100,000 population
NSW	20002	34.8%	253.3
VIC	11432	19.9%	179.8
QLD	7157	12.5%	144.6
SA	4998	8.7%	289.4
WA	5922	10.3%	228.9
TAS	3667	6.4%	702.5
NT	881	1.5%	358.0
ACT	3362	5.9%	814.8
AUS	57421	100.0%	232.4

Vaccination rates:

Vaccinated participants:	COVID-19 vaccine			Influenza (%)
	At least 1 dose (%)	At least 2 doses (%)	3 doses (%)	
<5 years				8.1
5-11 years	89.7	74.6	0.6	5.7
12-17 years	98.0	96.1	23.4	8.8
18-64 years	99.3	99.0	92.6	18.2
65+ years	99.5	99.3	97.3	31.5
Working with patients	99.6	99.4	96.3	21.5
Aboriginal and/or Torres Strait Islander	93.6	92.4	70.5	17.6
Vaccinated overall (%)	97.7	96.8	86.8	22.0

*Influenza vaccination data is excluded until the 2022 influenza vaccine is released in Australia

