

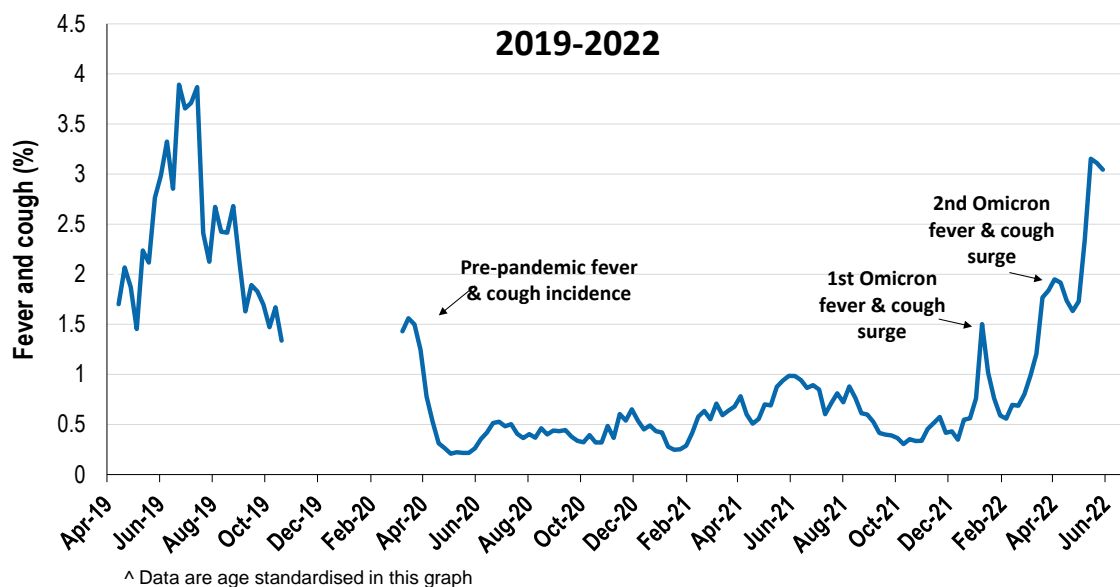
Respiratory illness levels are moderate and increasing in children aged under 5

65,717 participants this week

Respiratory illness activity*:

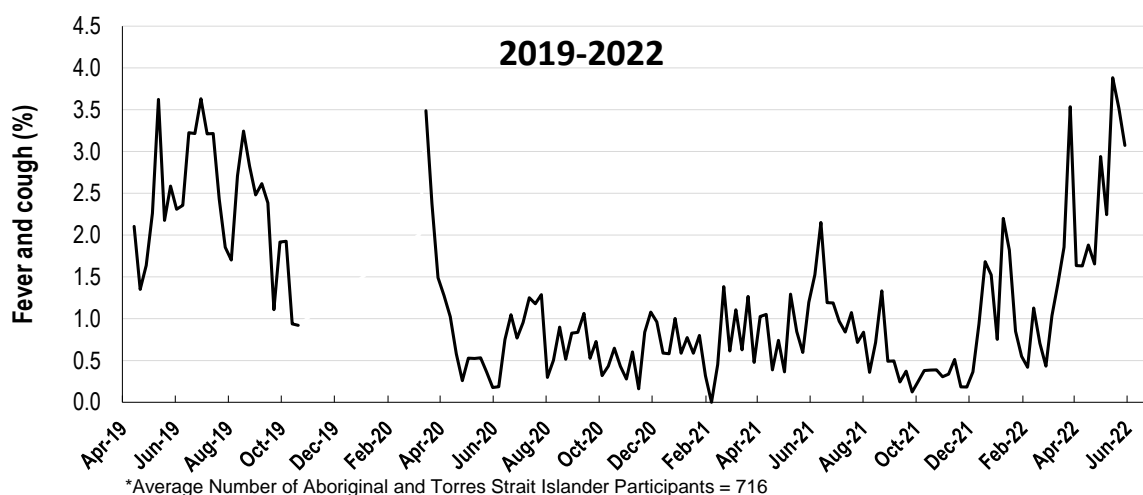
*Respiratory illness activity is defined as fever & cough for this report

3% this week: respiratory illness activity is moderate



Respiratory illness activity among Aboriginal and Torres Strait Islander participants

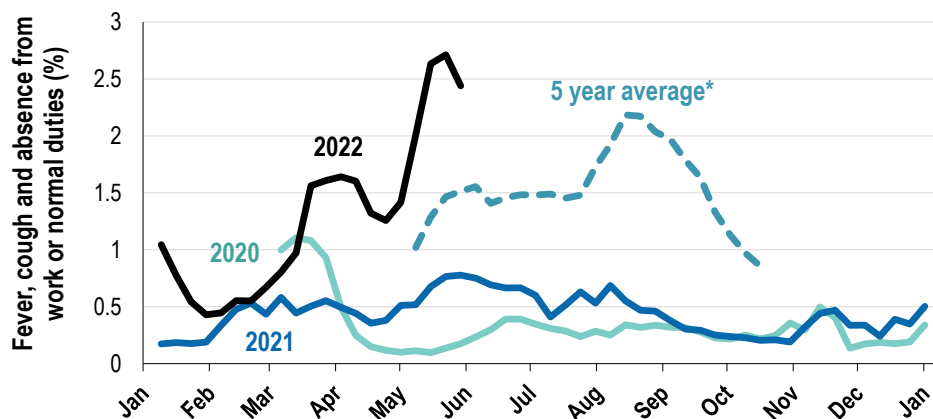
3.1% this week: respiratory illness activity is moderate



Respiratory illness severity: 33.6% of participants with fever and cough sought medical advice this week		
Respiratory illness Severity	Week ending 29 May 2022 number (%)	Week ending 22 May 2022 number (%)
Number of participants	65717 (100%)	65277 (100%)
Fever & cough	1335 (2%)	1439 (2.2%)
Fever, cough & time-off normal duties	1033 (1.6%)	1198 (1.8%)
Fever, cough & 3 or more days off work/normal duties	694 (1.1%)	951 (1.5%)
Number of participants with fever and cough	1335 (100%)	1439 (100%)
*Sought medical advice for fever and cough	449 (33.6%)	558 (38.8%)
Admitted to hospital	8 (0.6%)	5 (0.3%)
Tested for influenza	86 (6.4%)	92 (6.4%)
Tested, result positive for influenza	33 (2.5%)	36 (2.5%)
Tested for COVID-19 by PCR	372 (27.9%)	518 (36%)
Tested for COVID-19 by PCR, result positive	168 (12.6%)	241 (16.7%)
Tested for COVID-19 by RAT	1096 (82.1%)	1256 (87.3%)
Tested for COVID-19 by RAT, result positive	395 (29.6%)	545 (37.9%)

*Includes those who sought medical advice from a general practitioner, COVID-19 clinic, emergency department, or were admitted to hospital for fever & cough

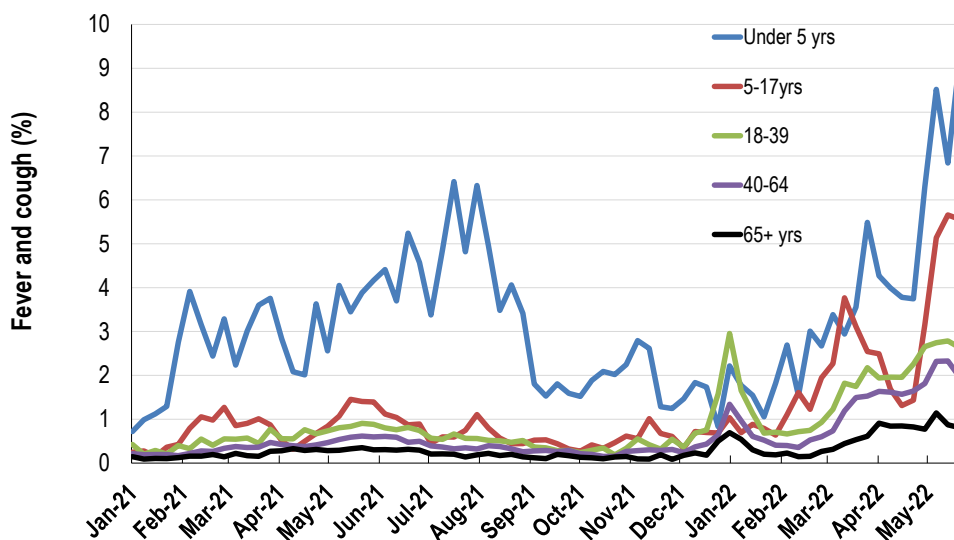
Fever, cough and absence from work or normal duties (Australia):



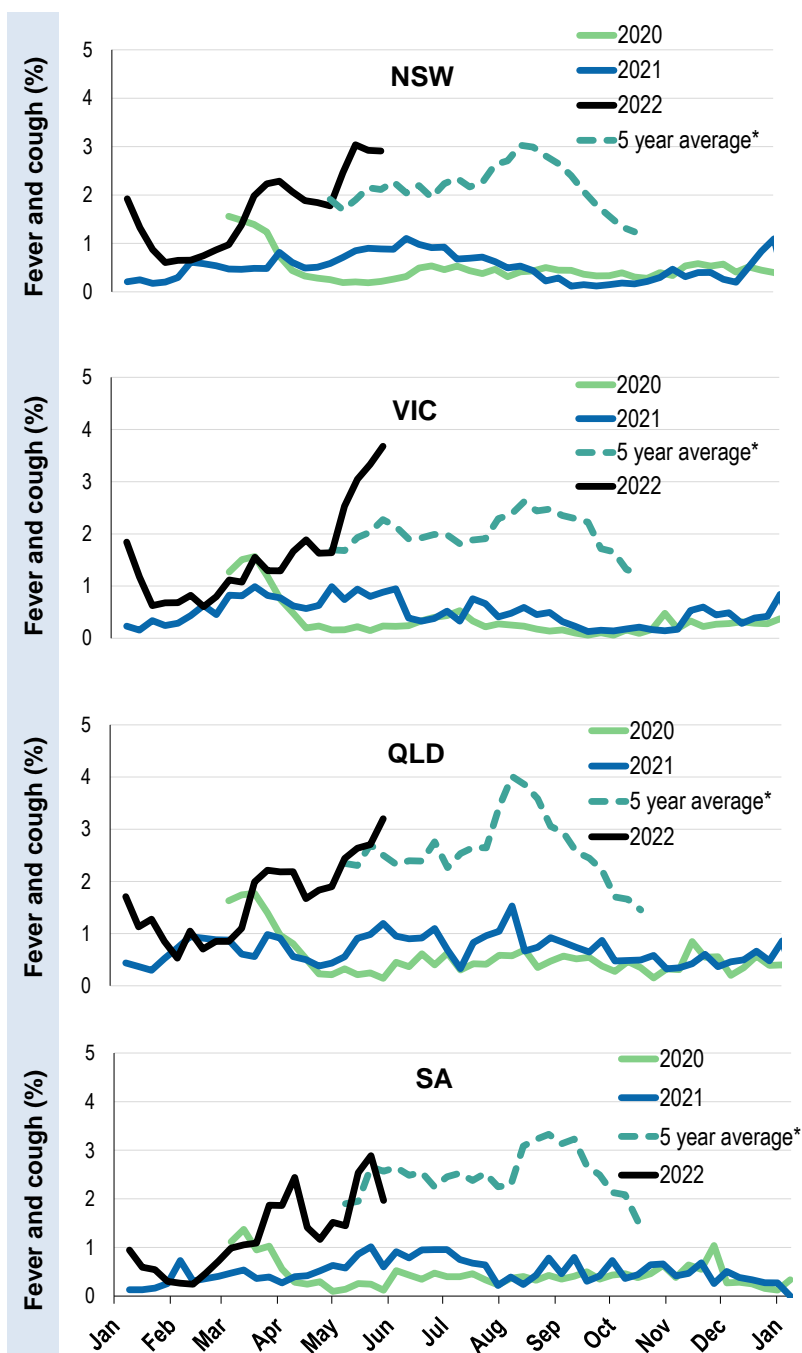
*5 year average is calculated using 2015, 2016, 2017, 2018 and 2019 data

^ Data are age standardised in this graph

Respiratory illness activity by age group in 2021 and 2022 (Australia):

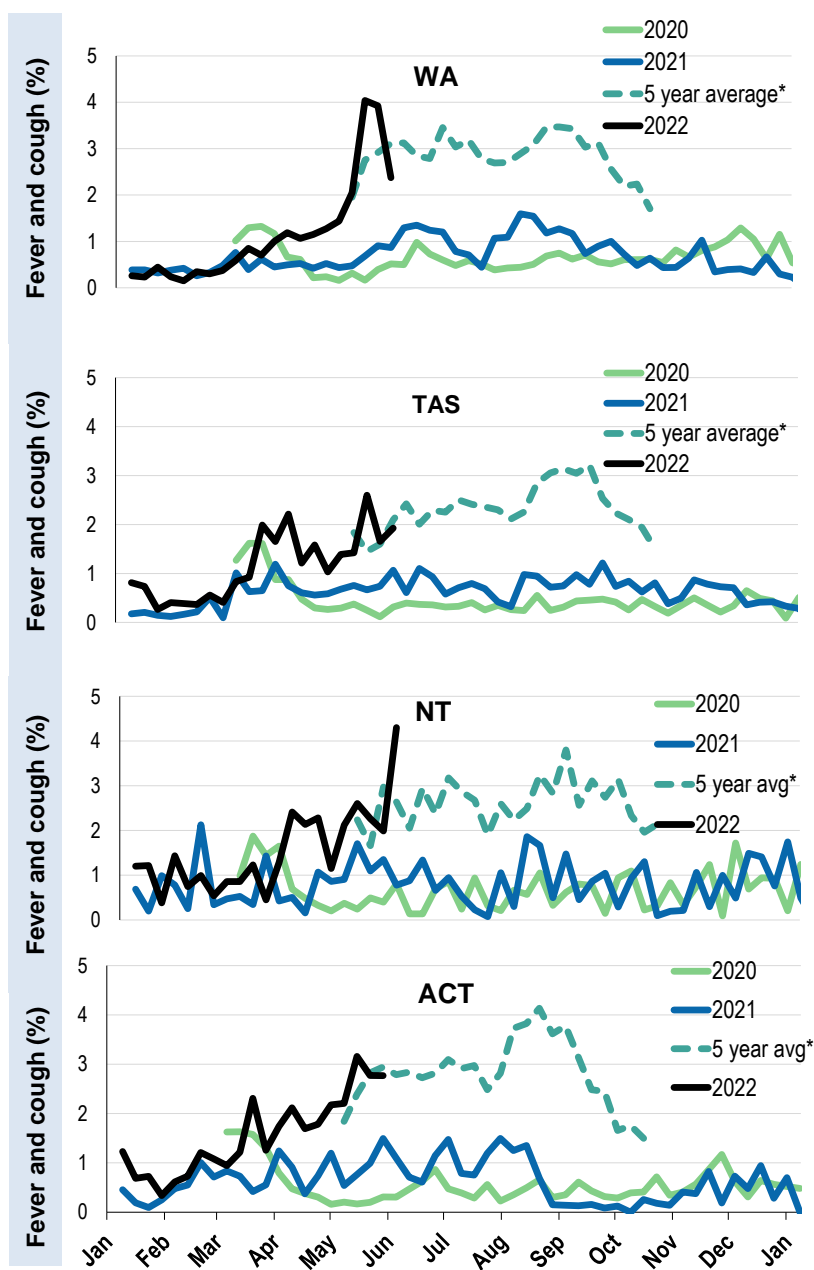


Respiratory illness activity by state/territory (age standardised):



*5 year average is calculated using 2015, 2016, 2017, 2018 and 2019 data

Respiratory illness activity by state/territory (age standardised):



*5 year average is calculated using 2015, 2016, 2017, 2018 and 2019 data

Participation:
65,717 participants (65,277 last week)

State	Participants	%	Rate/100,000 population
NSW	23175	35.3%	283.1
VIC	13107	19.9%	197.3
QLD	8000	12.2%	152.7
SA	5717	8.7%	322.5
WA	6651	10.1%	247.7
TAS	4169	6.3%	770.9
NT	1057	1.6%	429.8
ACT	3841	5.8%	892.2
AUS	65717	100.0%	255.2

Vaccination rates:

Vaccinated participants:	COVID-19 vaccine			Influenza (%)
	At least 1 dose (%)	At least 2 doses (%)	3 doses (%)	
<5 years				45.0
5-11 years	89.7	78.4	0.9	37.4
12-17 years	97.8	95.7	23.5	32.6
18-64 years	99.2	98.2	91.6	64.3
65+ years	99.5	98.8	96.4	85.5
Working with patients	99.4	98.6	95.3	75.8
Aboriginal and/or Torres Strait Islander	93.9	90.9	70.7	53.0
Vaccinated overall (%)	97.5	96.2	85.6	69.2

*Influenza vaccination data is excluded until the 2022 influenza vaccine is released in Australia