

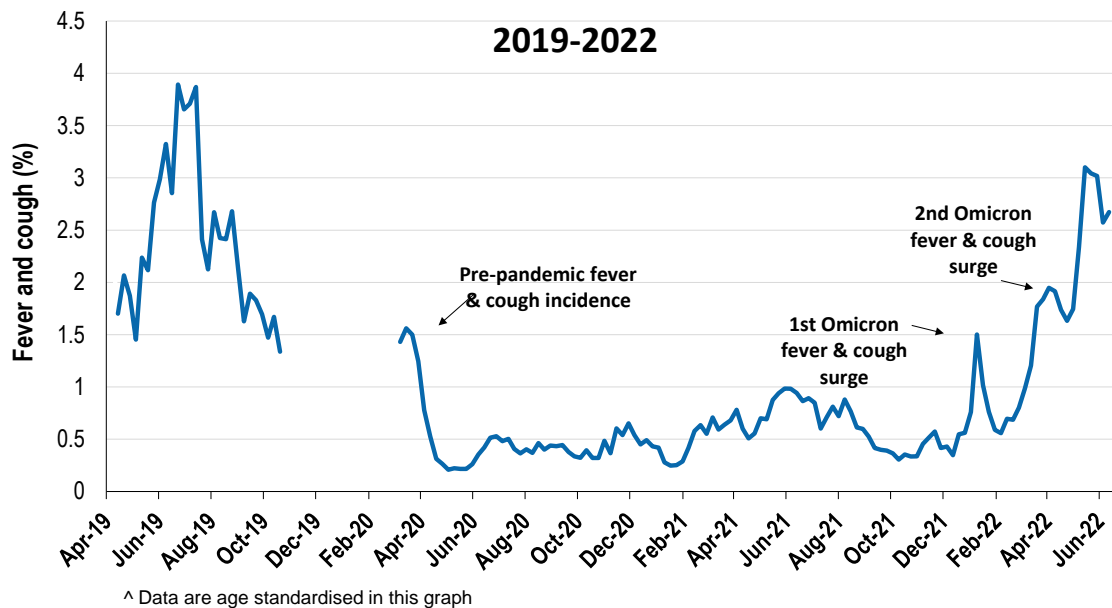
Respiratory illness levels are low and highest in the under five age group

64,266 participants this week

Respiratory illness activity*:

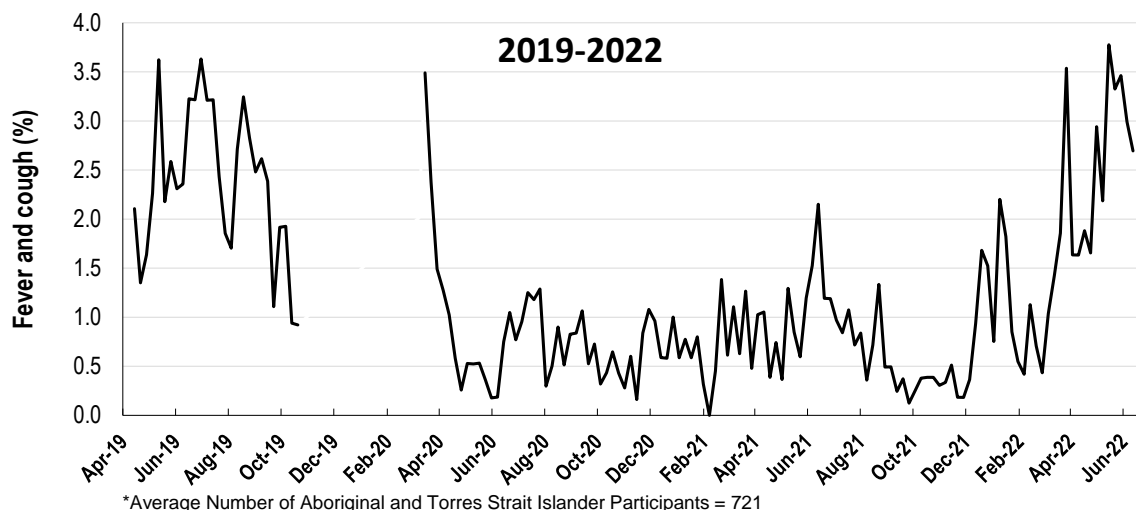
*Respiratory illness activity is defined as fever & cough for this report

2.7% this week: respiratory illness activity is low



Respiratory illness activity among Aboriginal and Torres Strait Islander participants

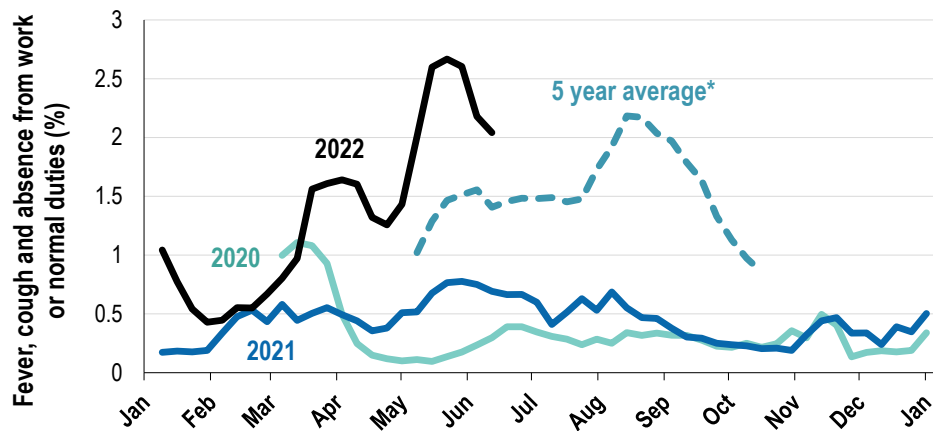
2.7% this week: respiratory illness activity is low



Respiratory illness severity: 32.7% of participants with fever and cough sought medical advice this week		
Respiratory illness Severity	Week ending 12 June 2022 number (%)	Week ending 05 June 2022 number (%)
Number of participants	64266 (100%)	64960 (100%)
Fever & cough	1194 (1.9%)	1116 (1.7%)
Fever, cough & time-off normal duties	891 (1.4%)	903 (1.4%)
Fever, cough & 3 or more days off work/normal duties	614 (1%)	680 (1%)
Number of participants with fever and cough	1194 (100%)	1116 (100%)
*Sought medical advice for fever and cough	390 (32.7%)	420 (37.6%)
Admitted to hospital	5 (0.4%)	7 (0.6%)
Tested for influenza	155 (13%)	127 (11.4%)
Tested, result positive for influenza	52 (4.4%)	48 (4.3%)
Tested for COVID-19 by PCR	336 (28.1%)	334 (29.9%)
Tested for COVID-19 by PCR, result positive	128 (10.7%)	149 (13.4%)
Tested for COVID-19 by RAT	906 (75.9%)	930 (83.3%)
Tested for COVID-19 by RAT, result positive	330 (27.6%)	346 (31%)

*Includes those who sought medical advice from a general practitioner, COVID-19 clinic, emergency department, or were admitted to hospital for fever & cough

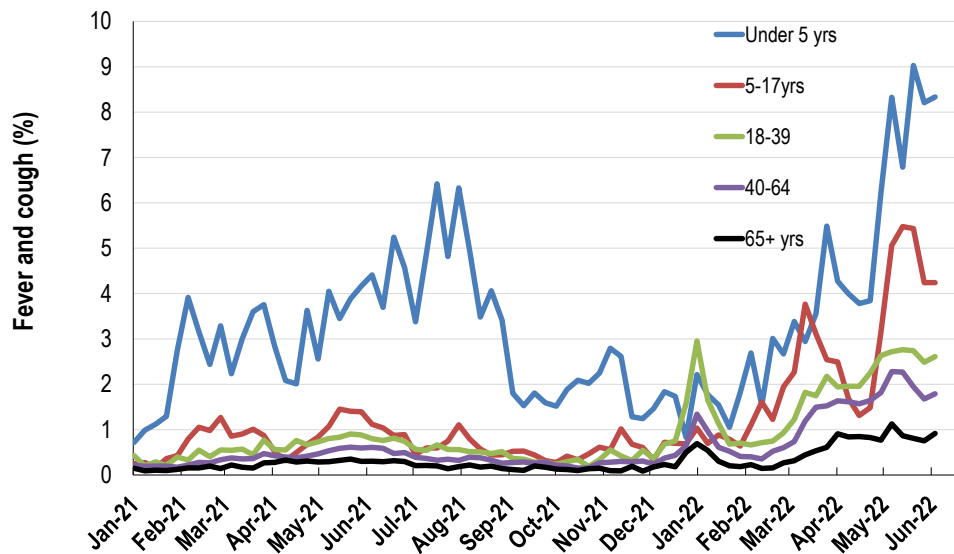
Fever, cough and absence from work or normal duties (Australia):



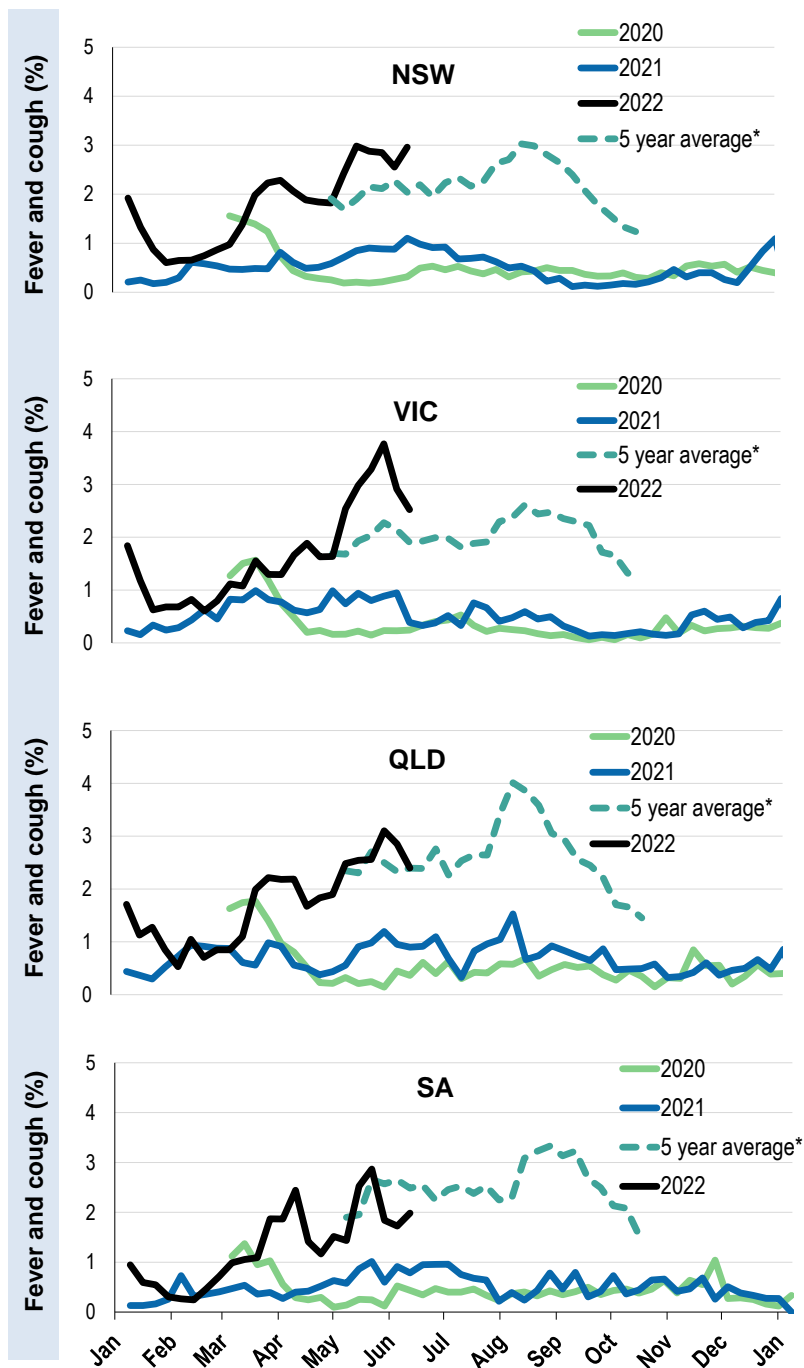
*5 year average is calculated using 2015, 2016, 2017, 2018 and 2019 data

^ Data are age standardised in this graph

Respiratory illness activity by age group in 2021 and 2022 (Australia):

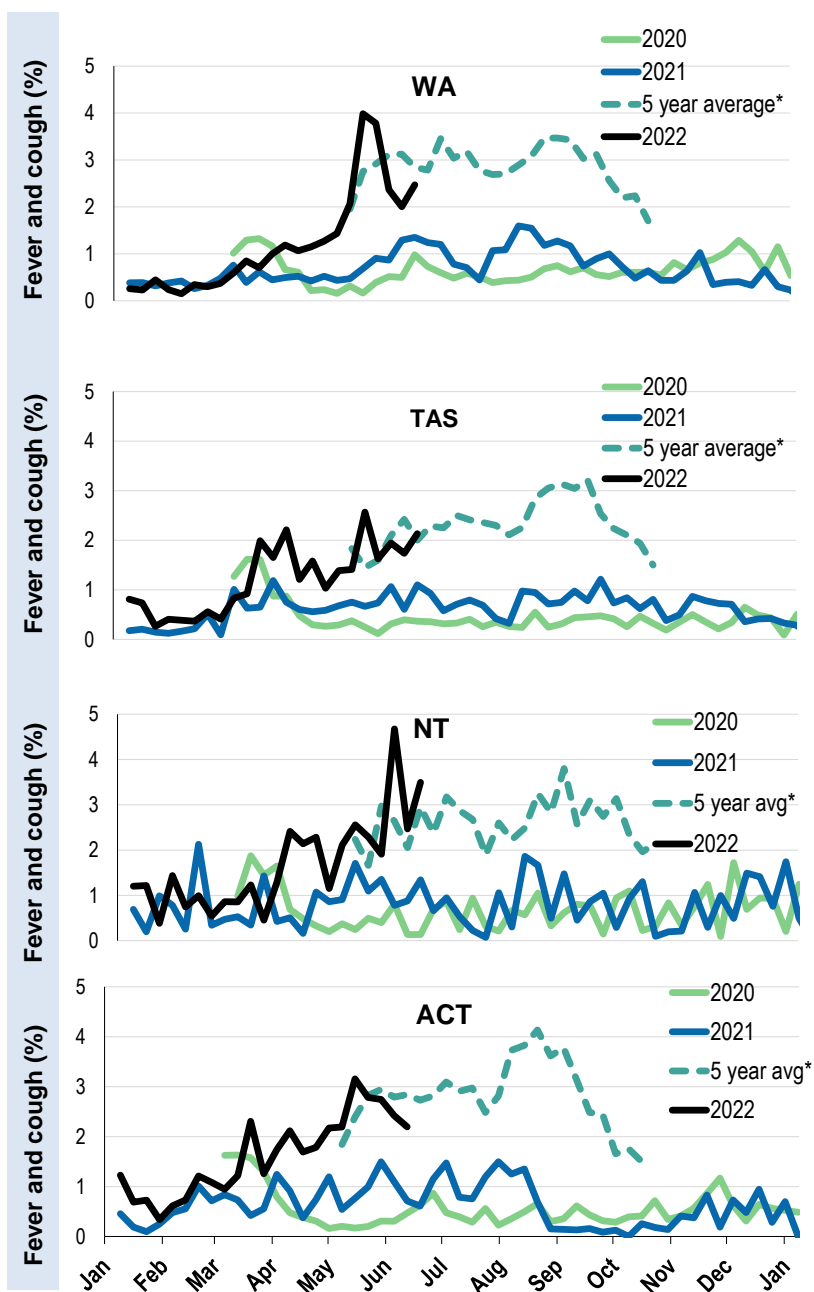


Respiratory illness activity by state/territory (age standardised):



*5 year average is calculated using 2015, 2016, 2017, 2018 and 2019 data

Respiratory illness activity by state/territory (age standardised):



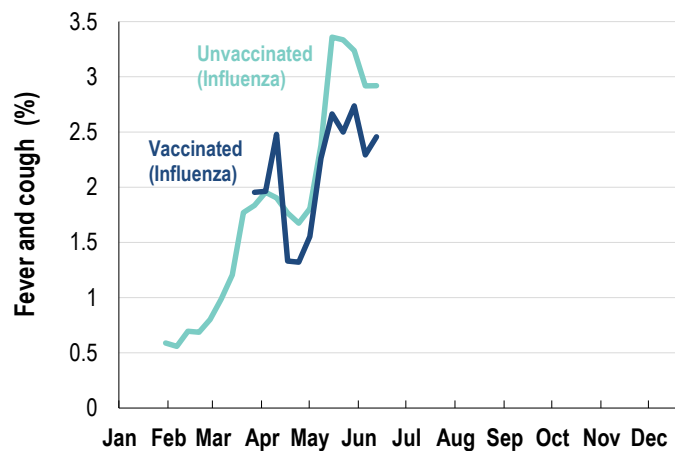
*5 year average is calculated using 2015, 2016, 2017, 2018 and 2019 data

Participation:
64,266 participants (64,960 last week)

State	Participants	% Rate/100,000 population
NSW	22625	35.2% 276.4
VIC	12784	19.9% 192.4
QLD	8001	12.4% 152.7
SA	5559	8.6% 313.6
WA	6540	10.2% 243.6
TAS	4073	6.3% 753.1
NT	987	1.5% 401.4
ACT	3697	5.8% 858.8
AUS	64266	100.0% 249.6

Vaccination rates:

Vaccinated participants:	COVID-19 vaccine			Influenza (%)
	At least 1 dose (%)	At least 2 doses (%)	3 doses (%)	
<5 years				58.8
5-11 years	88.5	79.4	1.0	53.1
12-17 years	97.9	96.0	23.8	44.1
18-64 years	99.3	98.9	93.0	73.5
65+ years	99.5	99.3	97.5	91.4
Working with patients	99.5	99.2	96.4	83.8
Aboriginal and/or Torres Strait Islander	93.0	91.3	71.6	63.2
Vaccinated overall (%)	97.6	96.8	87.0	77.8



* Data are age standardised in this chart