

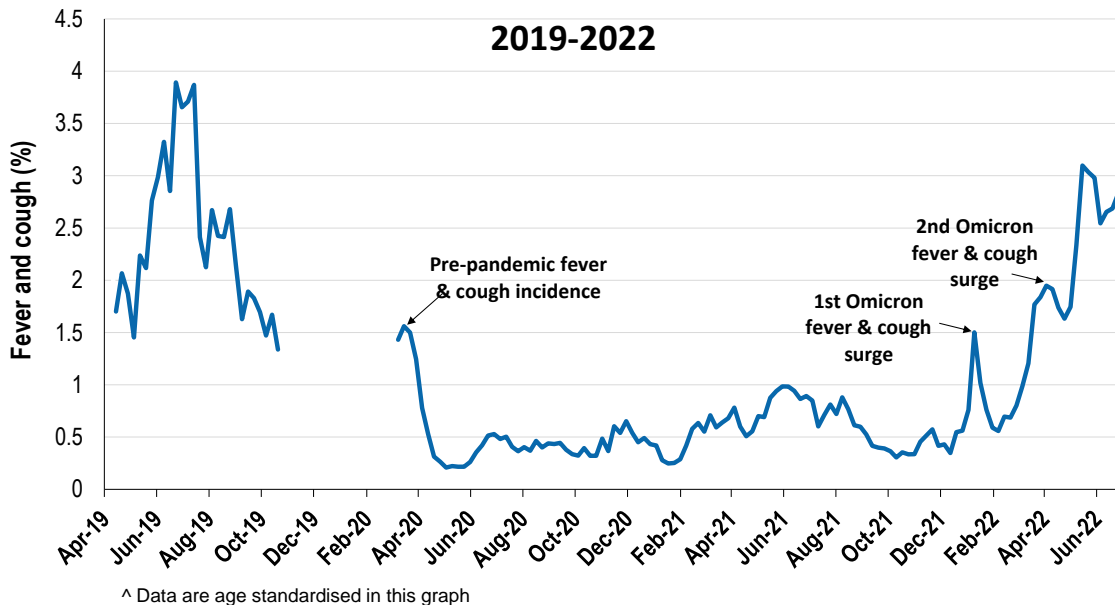
Respiratory illness levels are moderate and increasing in all age groups under 40

63,480 participants this week

Respiratory illness activity*:

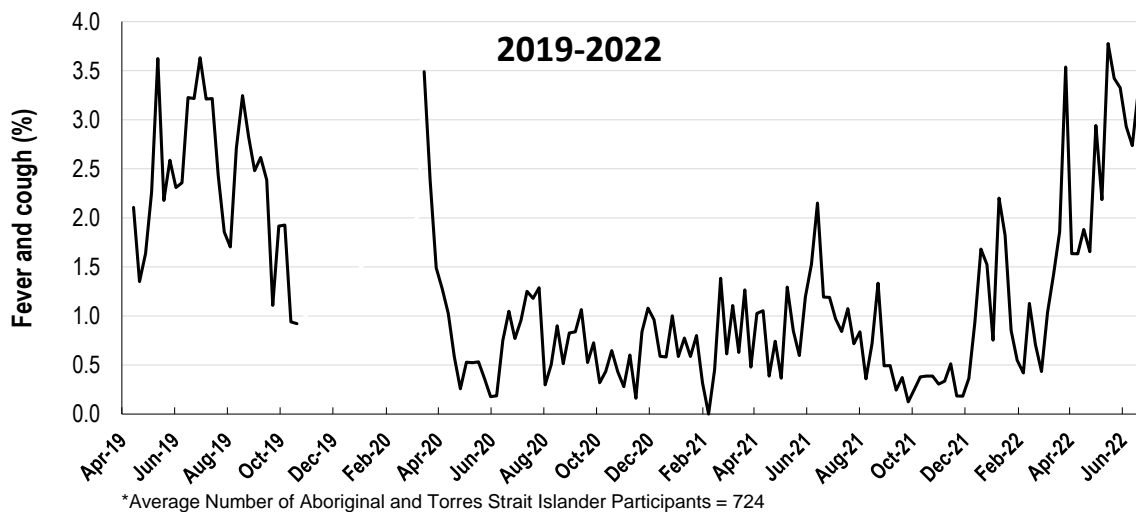
*Respiratory illness activity is defined as fever & cough for this report

2.8% this week: respiratory illness activity is moderate



Respiratory illness activity among Aboriginal and Torres Strait Islander participants

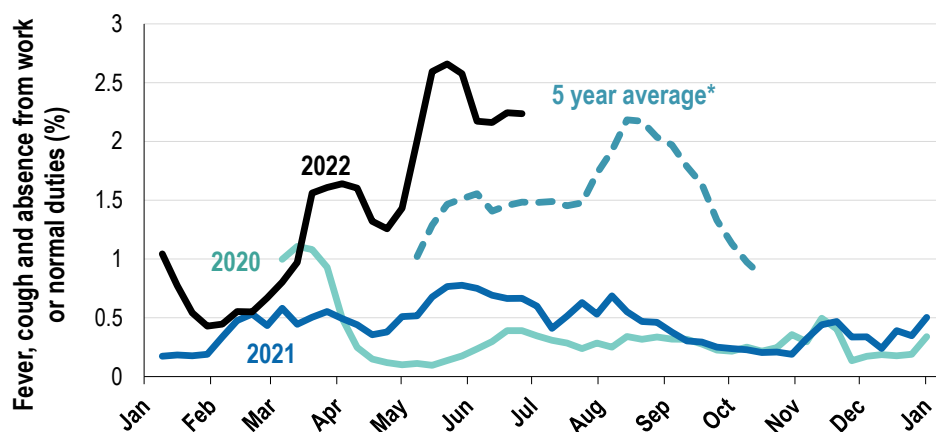
2.5% this week: respiratory illness activity is low



Respiratory illness severity:		
33.6% of participants with fever and cough sought medical advice this week		
Respiratory illness Severity	Week ending 26 June 2022 number (%)	Week ending 19 June 2022 number (%)
Number of participants	63480 (100%)	63841 (100%)
Fever & cough	1299 (2%)	1266 (2%)
Fever, cough & time-off normal duties	982 (1.5%)	1010 (1.6%)
Fever, cough & 3 or more days off work/normal duties	667 (1.1%)	753 (1.2%)
Number of participants with fever and cough	1299 (100%)	1266 (100%)
*Sought medical advice for fever and cough	436 (33.6%)	468 (37%)
Admitted to hospital	5 (0.4%)	8 (0.6%)
Tested for influenza	212 (16.3%)	225 (17.8%)
Tested, result positive for influenza	51 (3.9%)	70 (5.5%)
Tested for COVID-19 by PCR	359 (27.6%)	419 (33.1%)
Tested for COVID-19 by PCR, result positive	182 (14%)	156 (12.3%)
Tested for COVID-19 by RAT	1045 (80.4%)	1034 (81.7%)
Tested for COVID-19 by RAT, result positive	464 (35.7%)	405 (32%)

*Includes those who sought medical advice from a general practitioner, COVID-19 clinic, emergency department, or were admitted to hospital for fever & cough

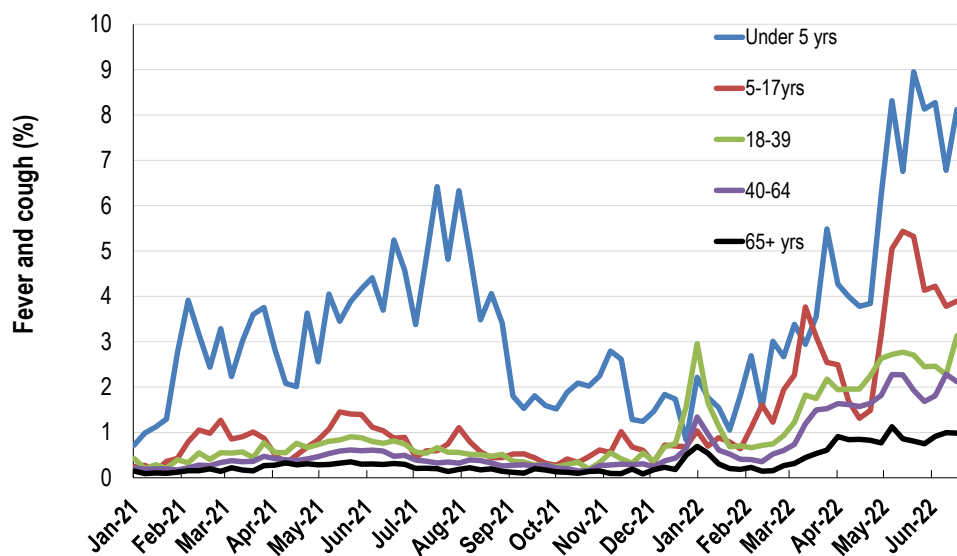
Fever, cough and absence from work or normal duties (Australia):



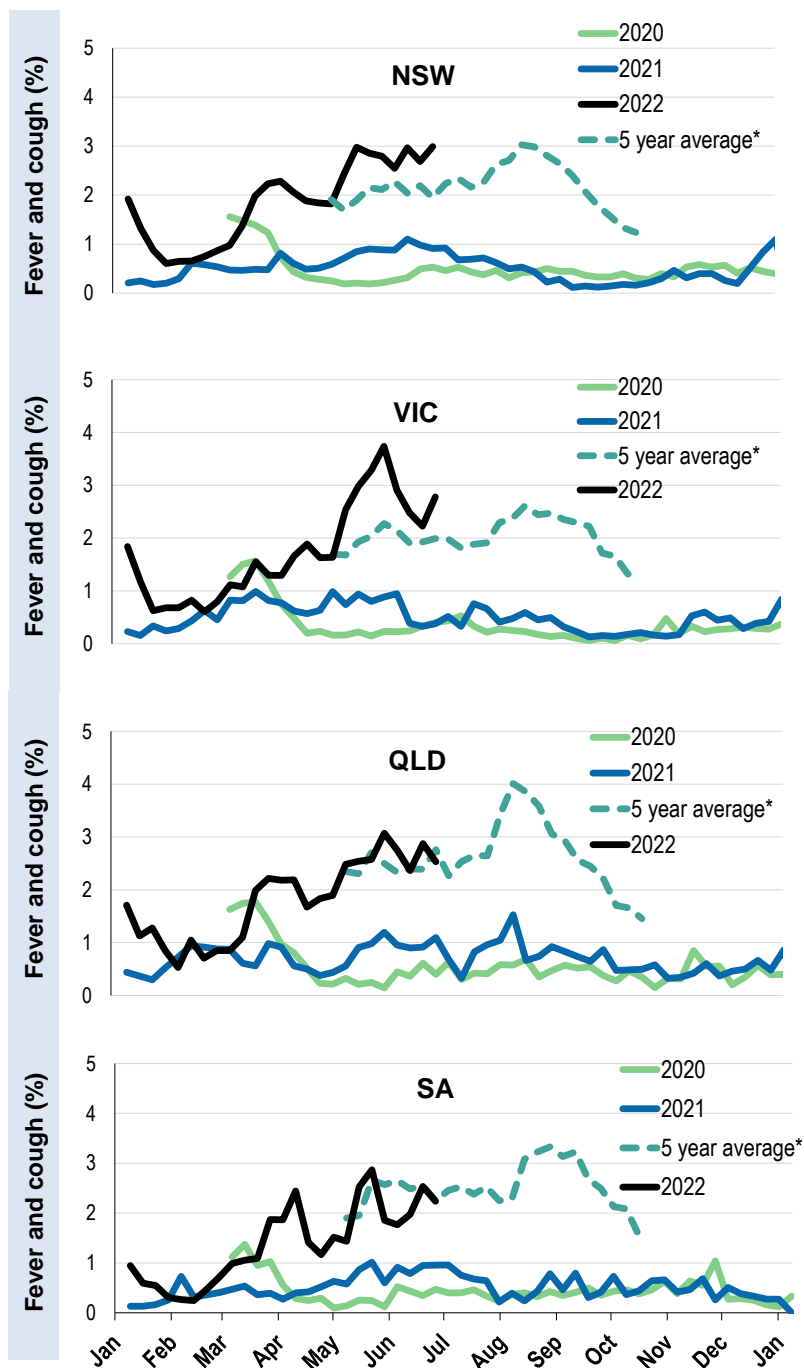
*5 year average is calculated using 2015, 2016, 2017, 2018 and 2019 data

^ Data are age standardised in this graph

Respiratory illness activity by age group in 2021 and 2022 (Australia):

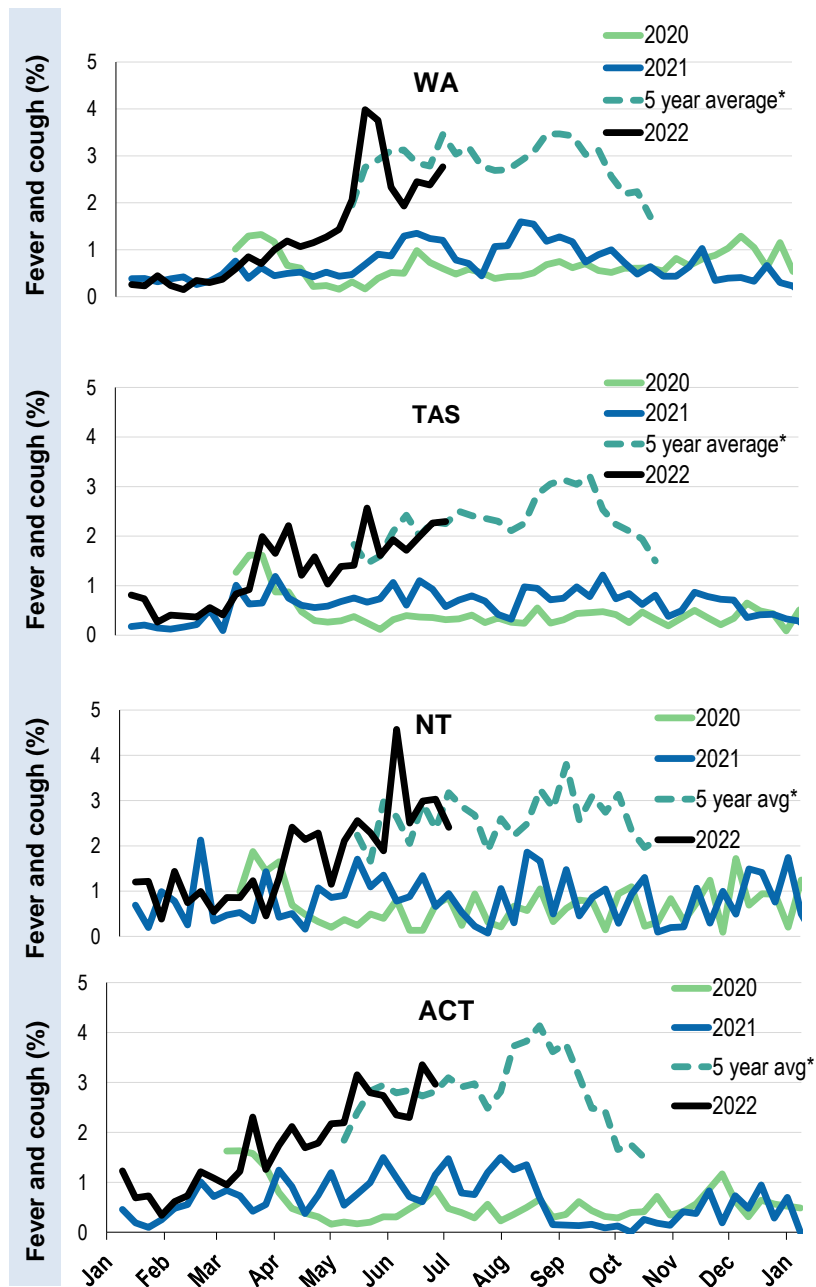


Respiratory illness activity by state/territory (age standardised):



*5 year average is calculated using 2015, 2016, 2017, 2018 and 2019 data

Respiratory illness activity by state/territory (age standardised):



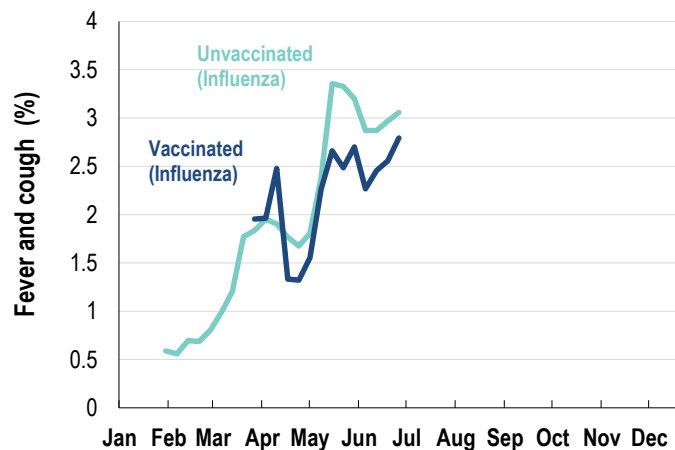
*5 year average is calculated using 2015, 2016, 2017, 2018 and 2019 data

Participation:
63,480 participants (63,841 last week)

State	Participants	% Rate/100,000 population
NSW	22477	35.4% 274.6
VIC	12378	19.5% 186.3
QLD	7767	12.2% 148.2
SA	5549	8.7% 313.0
WA	6453	10.2% 240.3
TAS	4114	6.5% 760.7
NT	992	1.6% 403.4
ACT	3750	5.9% 871.1
AUS	63480	100.0% 246.5

Vaccination rates:

Vaccinated participants:	COVID-19 vaccine			Influenza (%)
	At least 1 dose (%)	At least 2 doses (%)	3 doses (%)	
<5 years				63.5
5-11 years	89.3	80.8	1.4	59.5
12-17 years	98.1	96.6	24.3	51.4
18-64 years	99.3	99.0	93.4	77.5
65+ years	99.5	99.3	97.8	93.3
Working with patients	99.5	99.3	96.8	86.5
Aboriginal and/or Torres Strait Islander	93.9	92.5	69.9	68.0
Vaccinated overall (%)	97.6	97.0	87.5	81.4



* Data are age standardised in this chart