

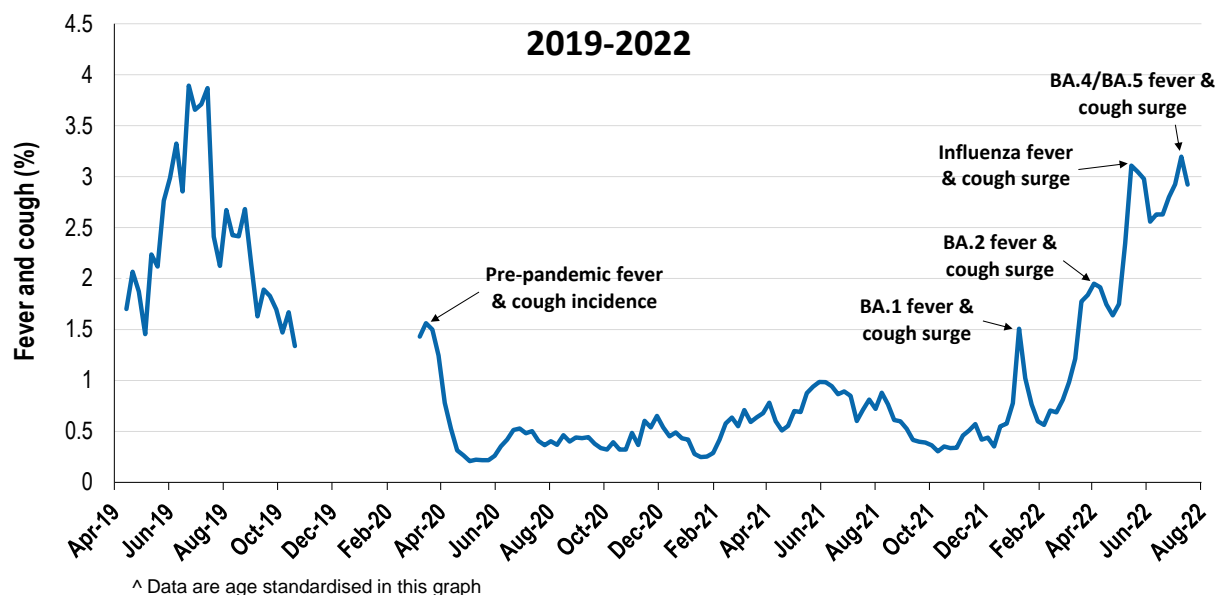
Respiratory illness levels are moderate but decreasing in all age groups

63,724 participants this week

Respiratory illness activity*:

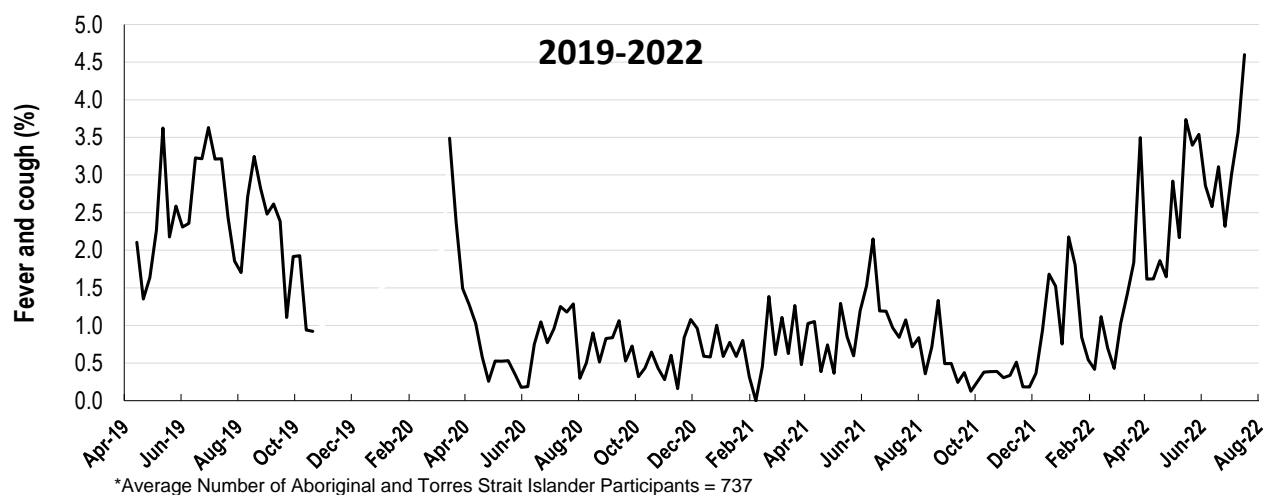
*Respiratory illness activity is defined as fever & cough for this report

2.9% this week: respiratory illness activity is moderate



Respiratory illness activity among Aboriginal and Torres Strait Islander participants

4.6% this week: respiratory illness activity is moderate

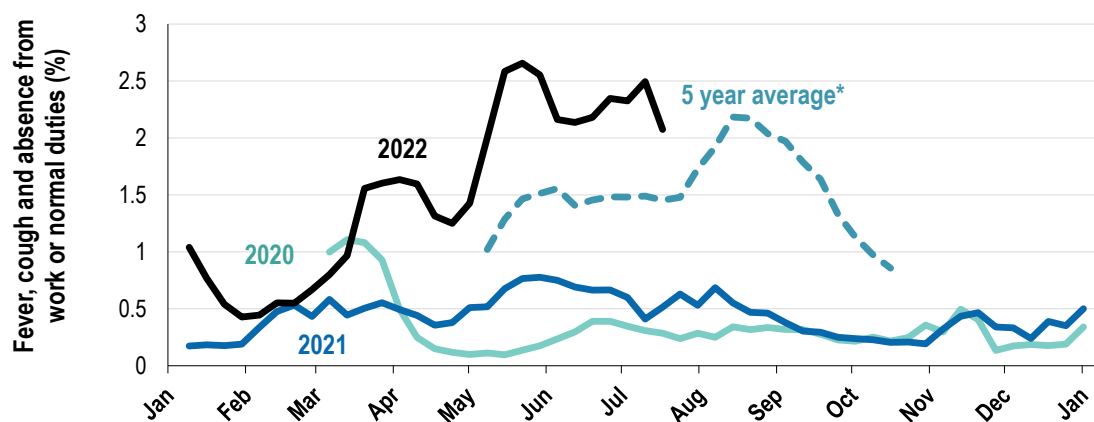


Respiratory illness severity:
38.6% of participants with fever and cough sought medical advice this week

Respiratory illness Severity	Week ending 17 July 2022 number (%)	Week ending 10 July 2022 number (%)
Number of participants	63724 (100%)	63118 (100%)
Fever & cough	1502 (2.4%)	1583 (2.5%)
Fever, cough & time-off normal duties	1056 (1.7%)	1199 (1.9%)
Fever, cough & 3 or more days off work/normal duties	734 (1.2%)	793 (1.3%)
Number of participants with fever and cough	1502 (100%)	1583 (100%)
*Sought medical advice for fever and cough	580 (38.6%)	632 (39.9%)
Admitted to hospital	9 (0.6%)	17 (1.1%)
Tested for influenza	224 (14.9%)	254 (16%)
Tested, result positive for influenza	13 (0.9%)	28 (1.8%)
Tested for COVID-19 by PCR	463 (30.8%)	512 (32.3%)
Tested for COVID-19 by PCR, result positive	264 (17.6%)	300 (19%)
Tested for COVID-19 by RAT	1270 (84.6%)	1361 (86%)
Tested for COVID-19 by RAT, result positive	676 (45%)	791 (50%)

*Includes those who sought medical advice from a general practitioner, COVID-19 clinic, emergency department, or were admitted to hospital for fever & cough

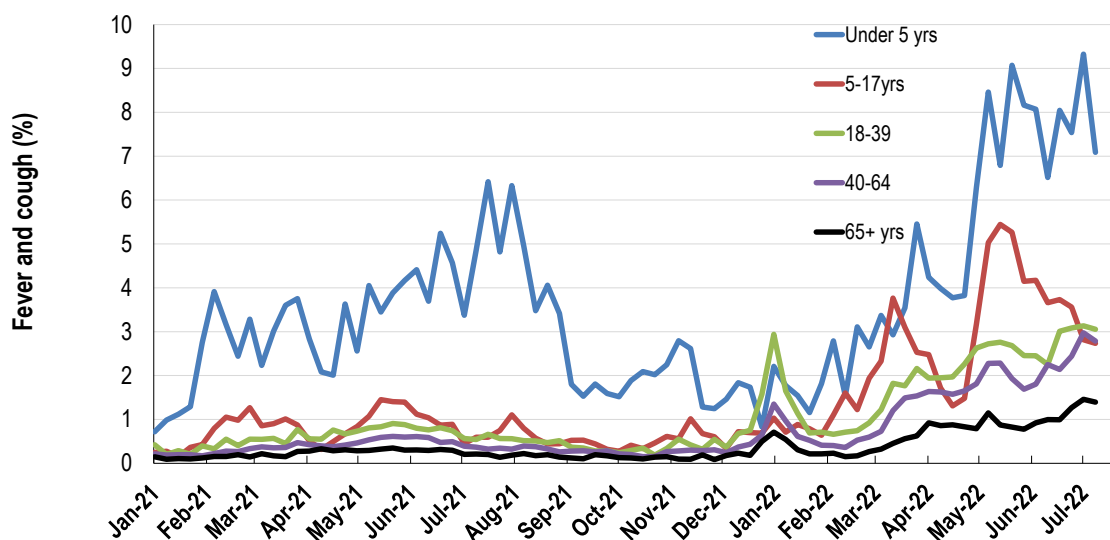
Fever, cough and absence from work or normal duties (Australia):



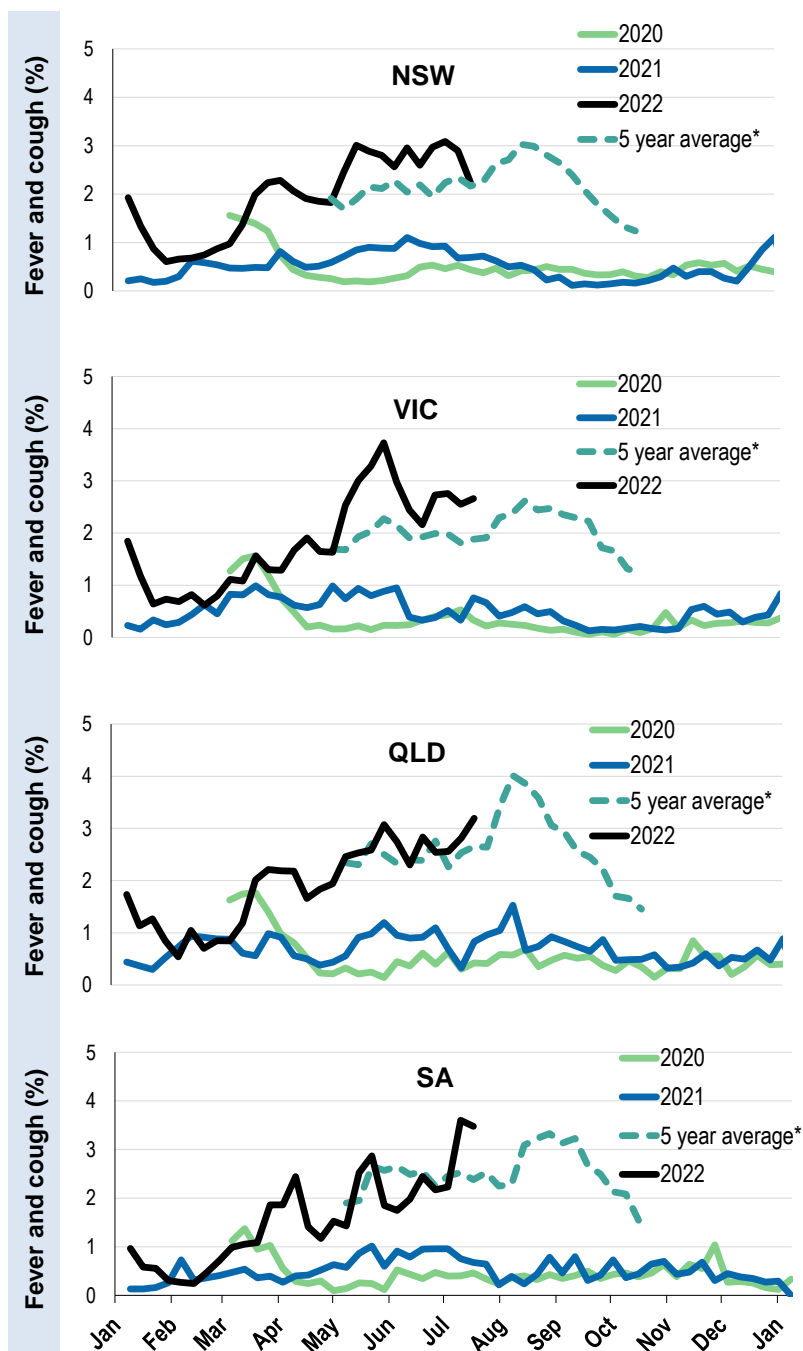
*5 year average is calculated using 2015, 2016, 2017, 2018 and 2019 data

^ Data are age standardised in this graph

Respiratory illness activity by age group in 2021 and 2022 (Australia):

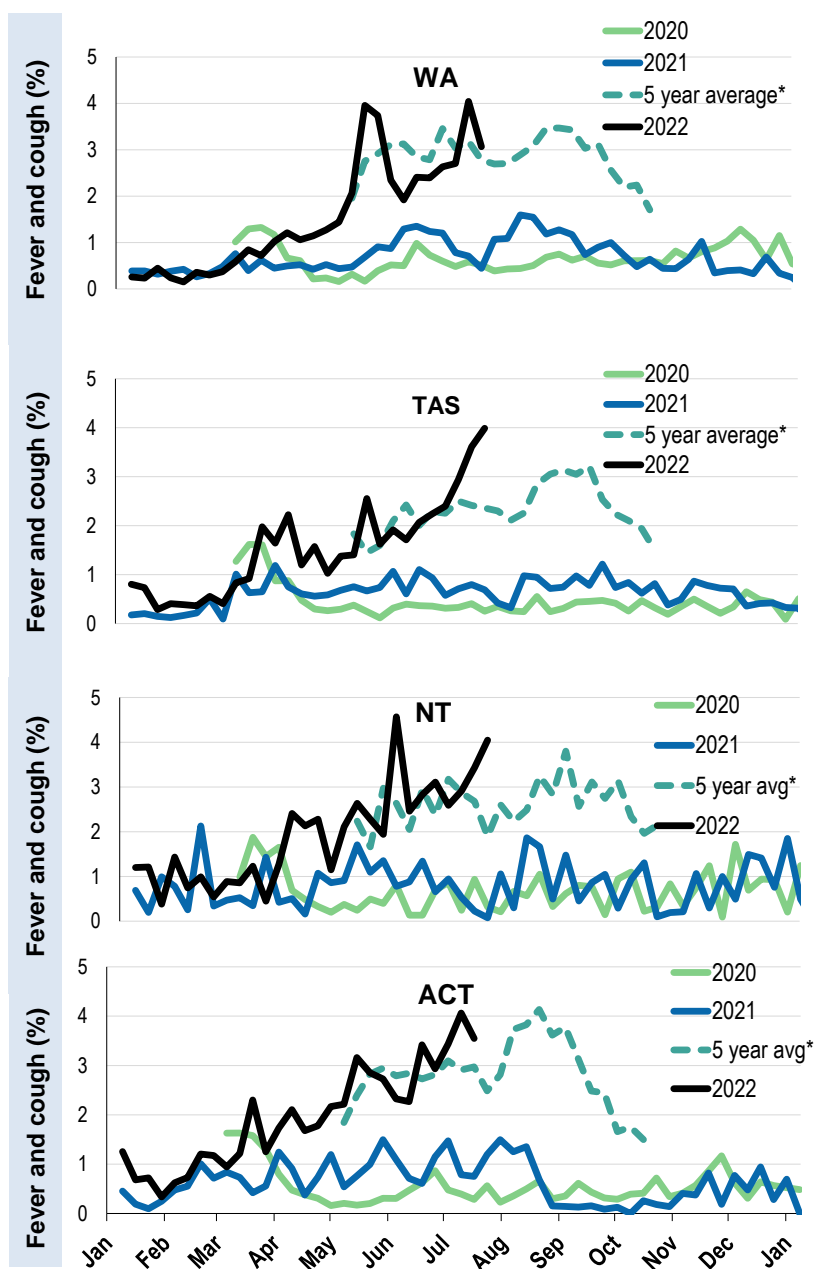


Respiratory illness activity by state/territory (age standardised):



*5 year average is calculated using 2015, 2016, 2017, 2018 and 2019 data

Respiratory illness activity by state/territory (age standardised):



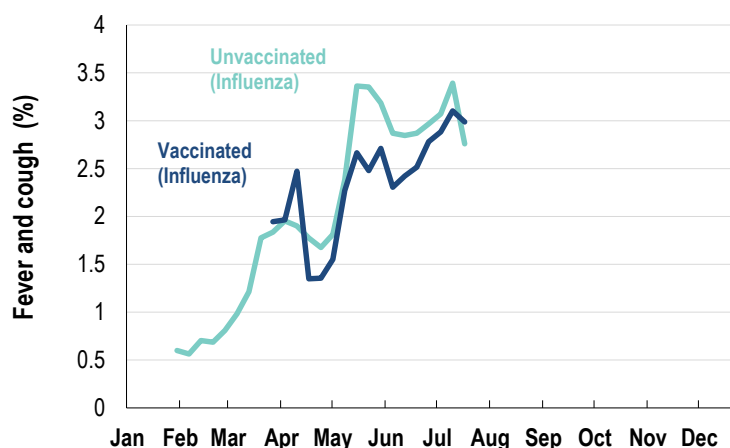
*5 year average is calculated using 2015, 2016, 2017, 2018 and 2019 data

Participation:
63,724 participants (63,118 last week)

State	Participants	% Rate/100,000 population
NSW	22564	35.4% 275.6
VIC	12726	20.0% 191.6
QLD	7880	12.4% 150.4
SA	5438	8.5% 306.7
WA	6381	10.0% 237.6
TAS	4006	6.3% 740.8
NT	980	1.5% 398.5
ACT	3749	5.9% 870.8
AUS	63724	100.0% 247.5

Vaccination rates:

Vaccinated participants:	COVID-19 vaccine				Influenza (%)
	At least 1 dose (%)	At least 2 doses (%)	3 doses (%)	4 doses (%)	
<5 years					66.8
5-11 years	89.1	81.3	1.4	0.0	63.4
12-17 years	97.9	96.5	24.7	0.5	54.7
18-64 years	99.3	99.0	93.8	22.0	79.8
65+ years	99.5	99.3	98.0	82.2	94.2
Working with patients	99.5	99.3	97.1	33.3	88.5
Aboriginal and/or Torres Strait Islander	92.4	90.8	69.6	27.3	70.0
Vaccinated overall (%)	97.7	97.1	88.0	42.3	83.3



* Data are age standardised in this chart