

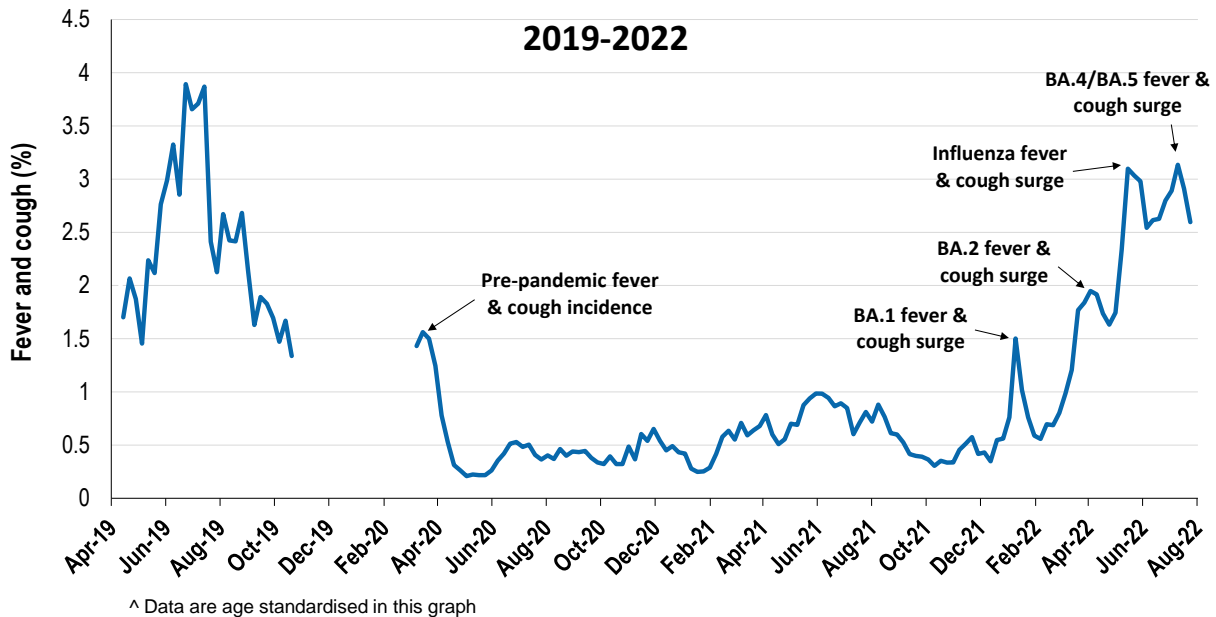
Respiratory illness levels are low and decreasing in those aged 18 and over

63,719 participants this week

Respiratory illness activity*:

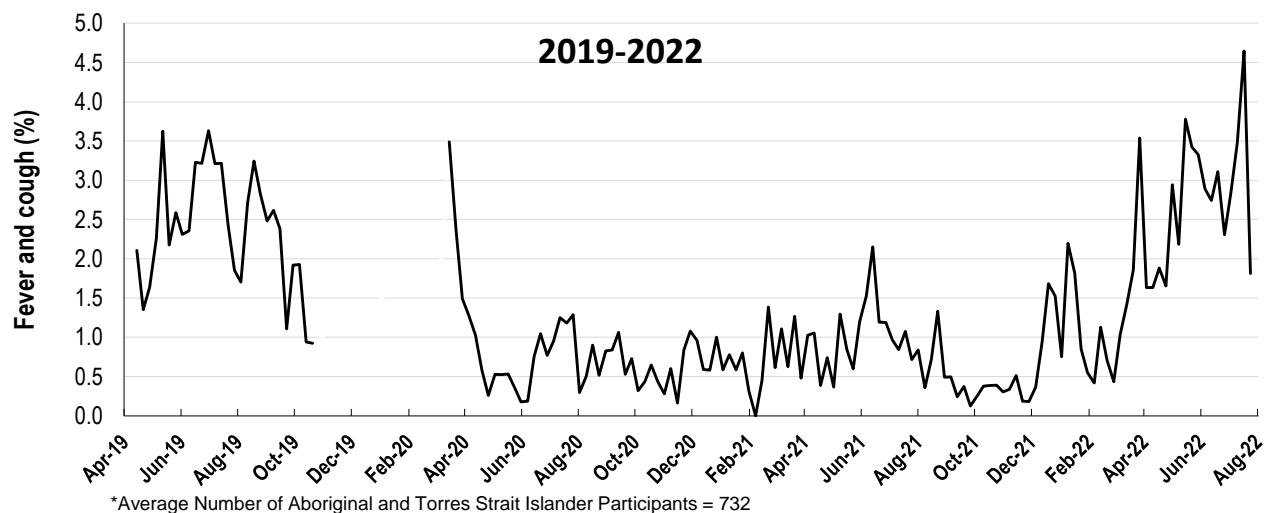
*Respiratory illness activity is defined as fever & cough for this report

2.6% this week: respiratory illness activity is low



Respiratory illness activity among Aboriginal and Torres Strait Islander participants

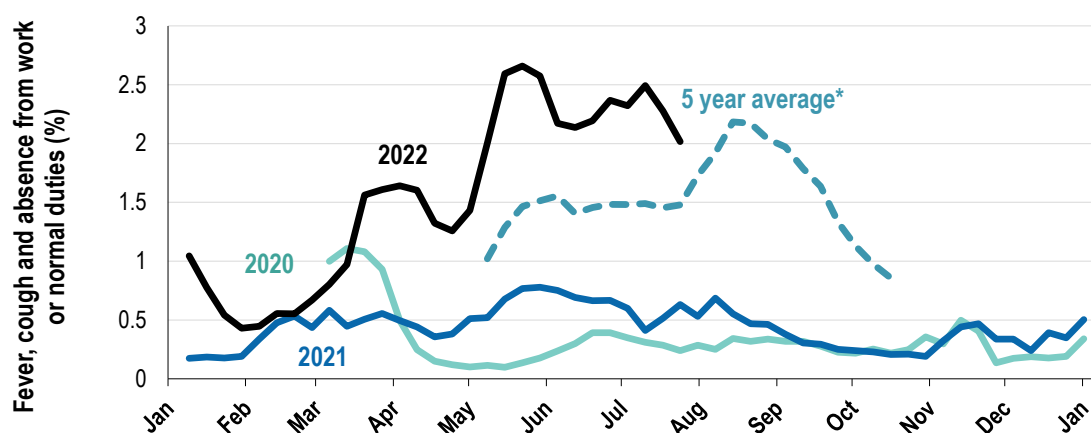
1.8% this week: respiratory illness activity is low



Respiratory illness severity:		
<i>37.3% of participants with fever and cough sought medical advice this week</i>		
Respiratory illness Severity	Week ending 24 July 2022 number (%)	Week ending 17 July 2022 number (%)
Number of participants	63719 (100%)	63268 (100%)
Fever & cough	1305 (2%)	1481 (2.3%)
Fever, cough & time-off normal duties	964 (1.5%)	1134 (1.8%)
Fever, cough & 3 or more days off work/normal duties	673 (1.1%)	730 (1.2%)
Number of participants with fever and cough	1305 (100%)	1481 (100%)
*Sought medical advice for fever and cough	487 (37.3%)	624 (42.1%)
Admitted to hospital	6 (0.5%)	9 (0.6%)
Tested for influenza	223 (17.1%)	250 (16.9%)
Tested, result positive for influenza	7 (0.5%)	17 (1.1%)
Tested for COVID-19 by PCR	427 (32.7%)	501 (33.8%)
Tested for COVID-19 by PCR, result positive	229 (17.5%)	278 (18.8%)
Tested for COVID-19 by RAT	1112 (85.2%)	1278 (86.3%)
Tested for COVID-19 by RAT, result positive	593 (45.4%)	706 (47.7%)

*Includes those who sought medical advice from a general practitioner, COVID-19 clinic, emergency department, or were admitted to hospital for fever & cough

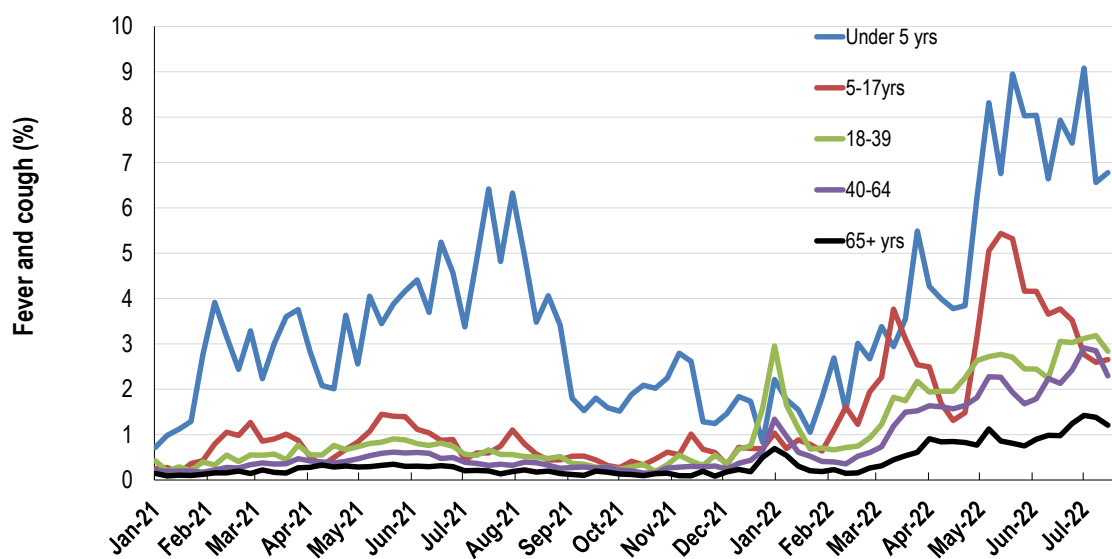
Fever, cough and absence from work or normal duties (Australia):



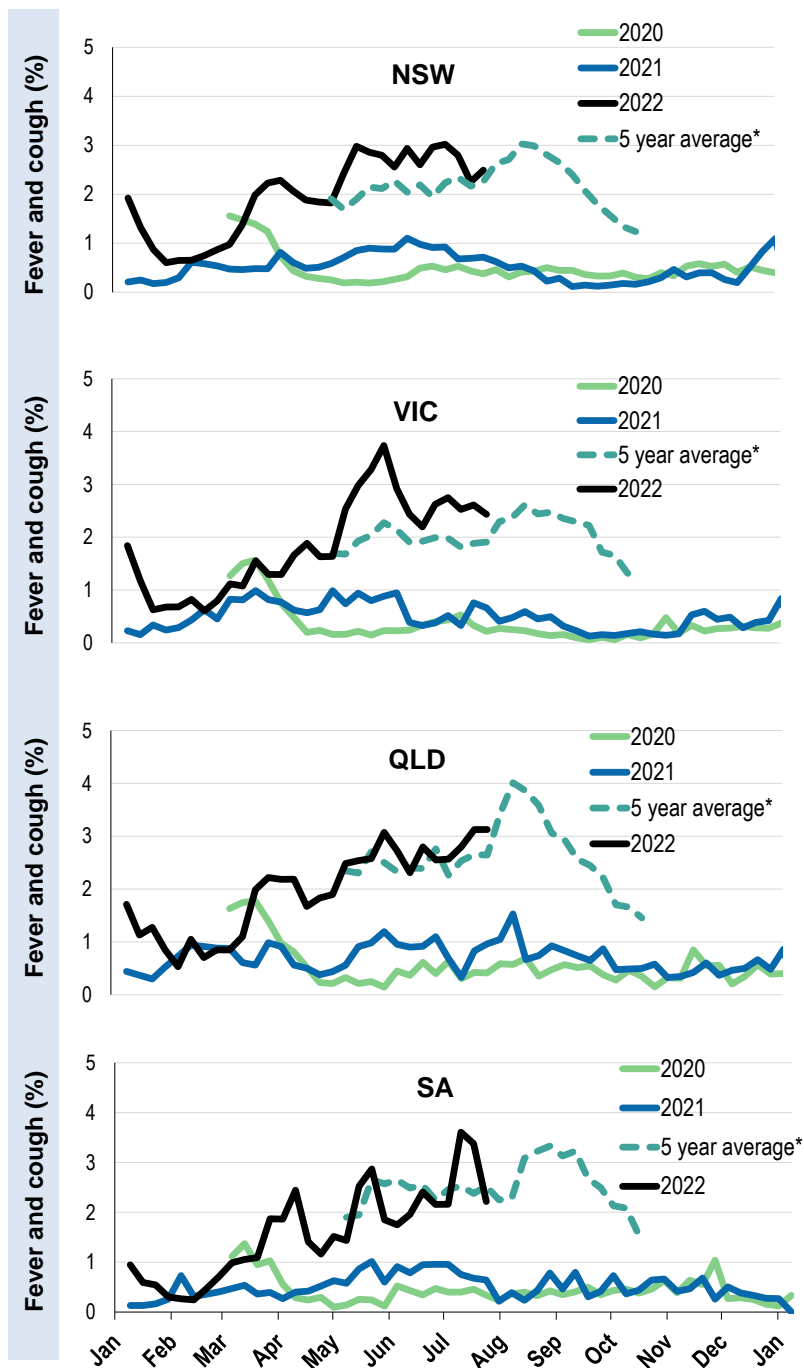
*5 year average is calculated using 2015, 2016, 2017, 2018 and 2019 data

^ Data are age standardised in this graph

Respiratory illness activity by age group in 2021 and 2022 (Australia):

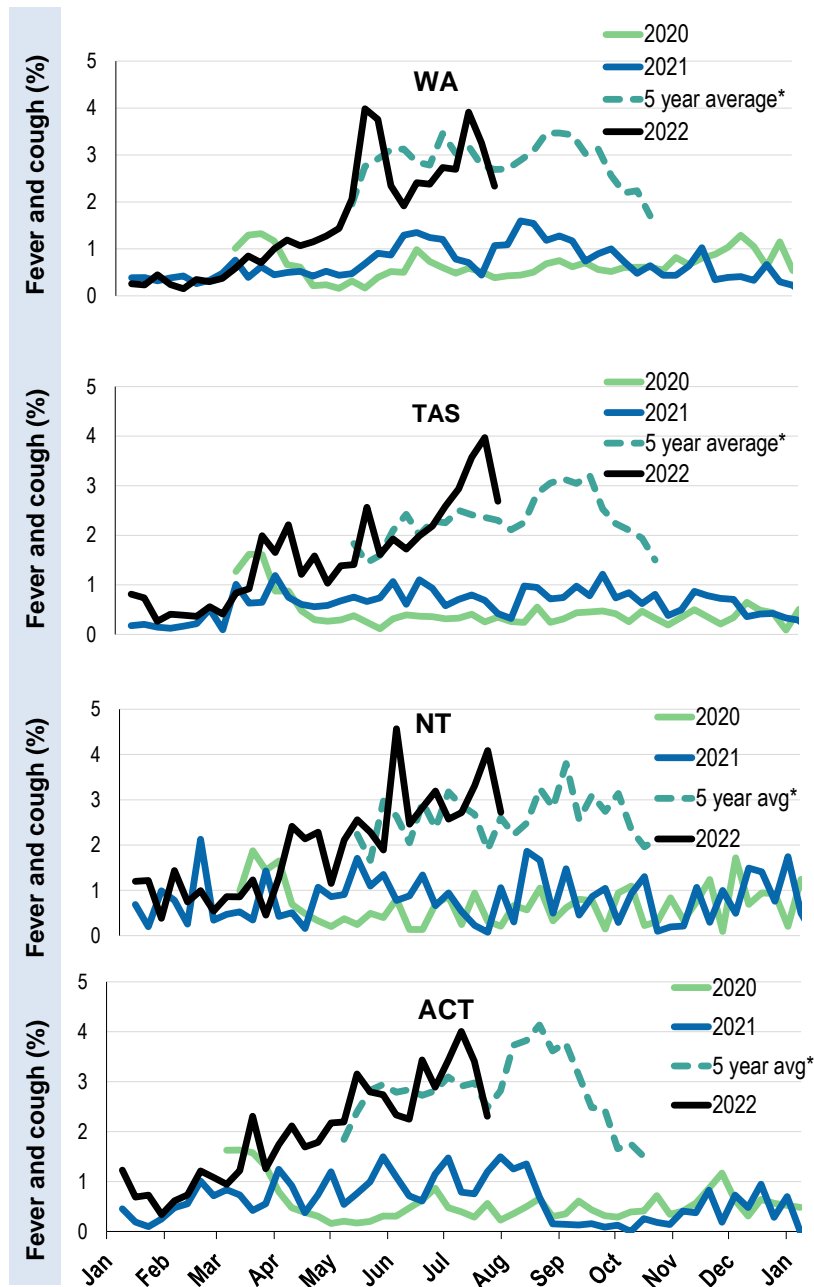


Respiratory illness activity by state/territory (age standardised):



*5 year average is calculated using 2015, 2016, 2017, 2018 and 2019 data

Respiratory illness activity by state/territory (age standardised):



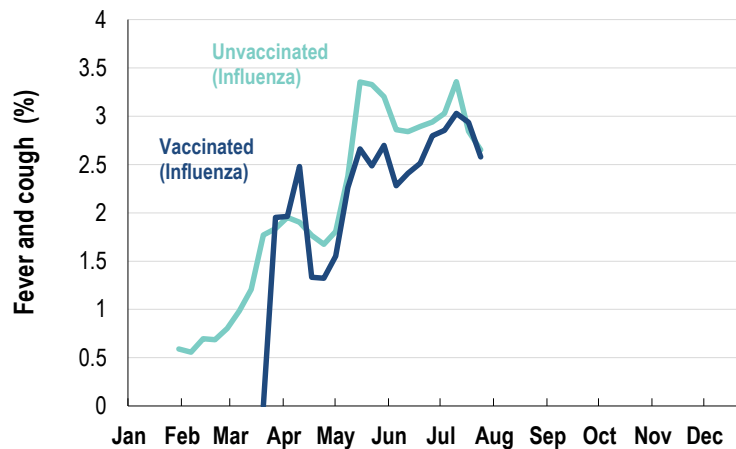
*5 year average is calculated using 2015, 2016, 2017, 2018 and 2019 data

Participation:
63,719 participants (63,268 last week)

State	Participants	% Rate/100,000 population
NSW	22427	35.2% 273.9
VIC	12729	20.0% 191.6
QLD	7848	12.3% 149.8
SA	5570	8.7% 314.2
WA	6372	10.0% 237.3
TAS	4018	6.3% 743.0
NT	997	1.6% 405.4
ACT	3758	5.9% 872.9
AUS	63719	100.0% 247.5

Vaccination rates:

Vaccinated participants:	COVID-19 vaccine				Influenza (%)
	At least 1 dose (%)	At least 2 doses (%)	3 doses (%)	4 doses (%)	
<5 years					69.1
5-11 years	88.5	80.9	1.3	0.0	63.7
12-17 years	97.9	96.1	24.6	0.4	56.3
18-64 years	99.3	98.6	93.4	21.8	80.9
65+ years	99.4	98.4	97.0	81.3	94.5
Working with patients	99.5	99.0	96.7	33.0	89.2
Aboriginal and/or Torres Strait Islander	93.2	91.7	70.5	27.9	70.7
Vaccinated overall (%)	97.6	96.5	87.3	41.7	84.1



* Data are age standardised in this chart