

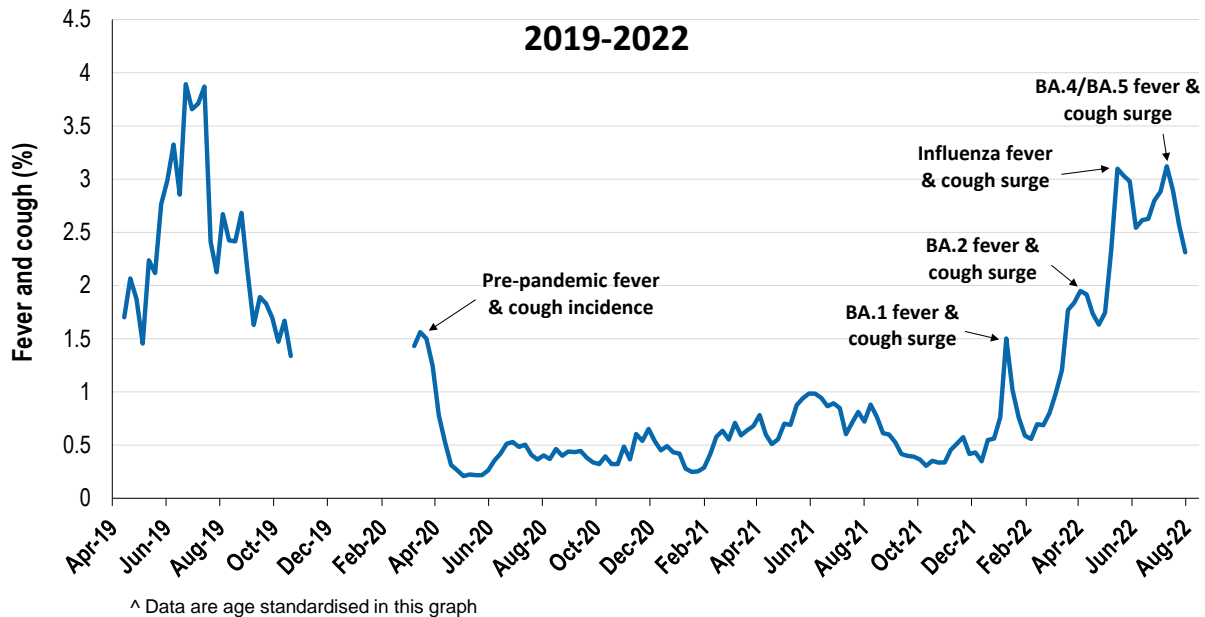
Respiratory illness levels are low and decreasing

63,310 participants this week

Respiratory illness activity*:

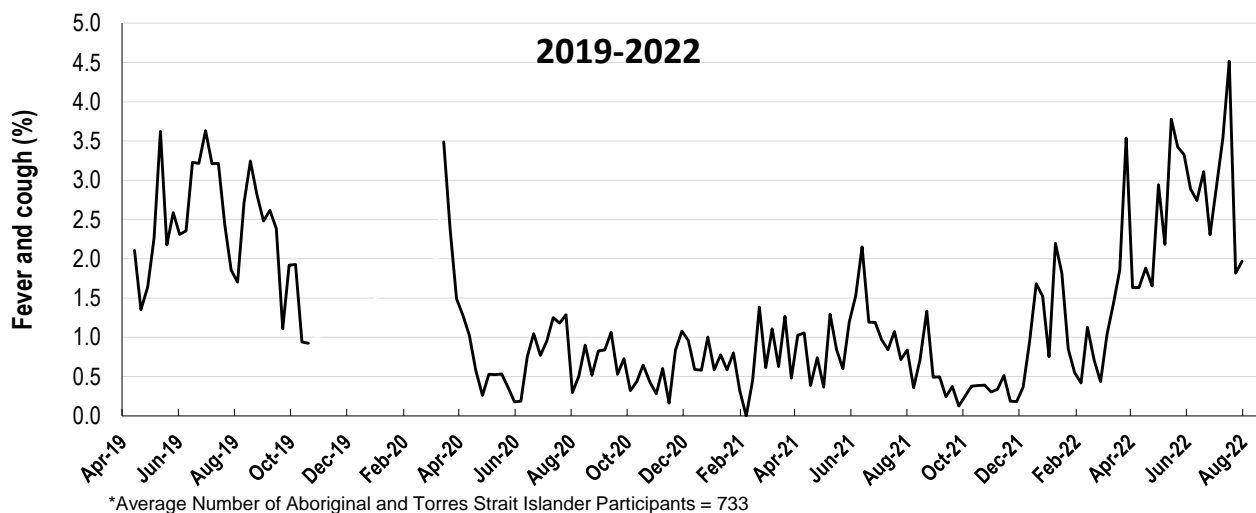
*Respiratory illness activity is defined as fever & cough for this report

2.3% this week: respiratory illness activity is low



Respiratory illness activity among Aboriginal and Torres Strait Islander participants

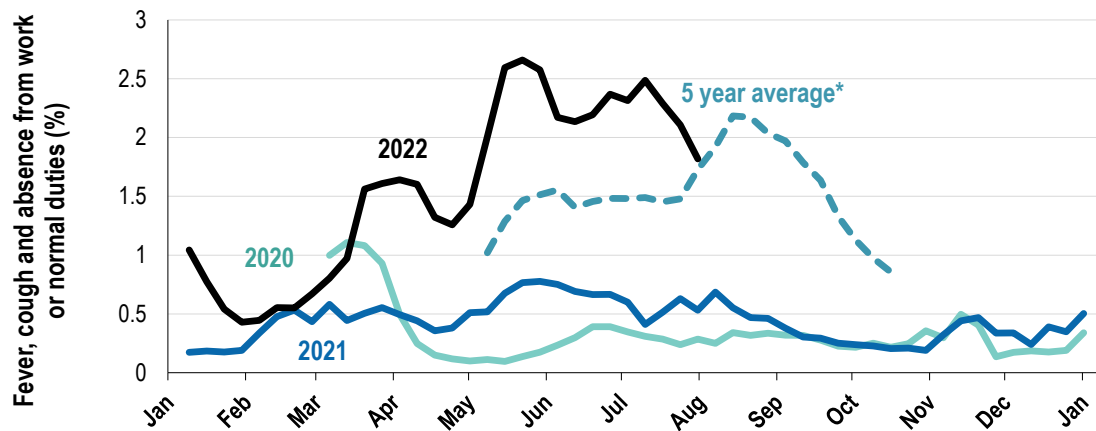
2% this week: respiratory illness activity is low



Respiratory illness severity:		
<i>38.3% of participants with fever and cough sought medical advice this week</i>		
Respiratory illness Severity	Week ending 31 July 2022 number (%)	Week ending 24 July 2022 number (%)
Number of participants	63310 (100%)	63720 (100%)
Fever & cough	1083 (1.7%)	1304 (2%)
Fever, cough & time-off normal duties	810 (1.3%)	1027 (1.6%)
Fever, cough & 3 or more days off work/normal duties	566 (0.9%)	671 (1.1%)
Number of participants with fever and cough	1083 (100%)	1304 (100%)
*Sought medical advice for fever and cough	415 (38.3%)	540 (41.4%)
Admitted to hospital	3 (0.3%)	7 (0.5%)
Tested for influenza	197 (18.2%)	253 (19.4%)
Tested, result positive for influenza	13 (1.2%)	9 (0.7%)
Tested for COVID-19 by PCR	351 (32.4%)	467 (35.8%)
Tested for COVID-19 by PCR, result positive	172 (15.9%)	243 (18.6%)
Tested for COVID-19 by RAT	935 (86.3%)	1129 (86.6%)
Tested for COVID-19 by RAT, result positive	466 (43%)	615 (47.2%)

*Includes those who sought medical advice from a general practitioner, COVID-19 clinic, emergency department, or were admitted to hospital for fever & cough

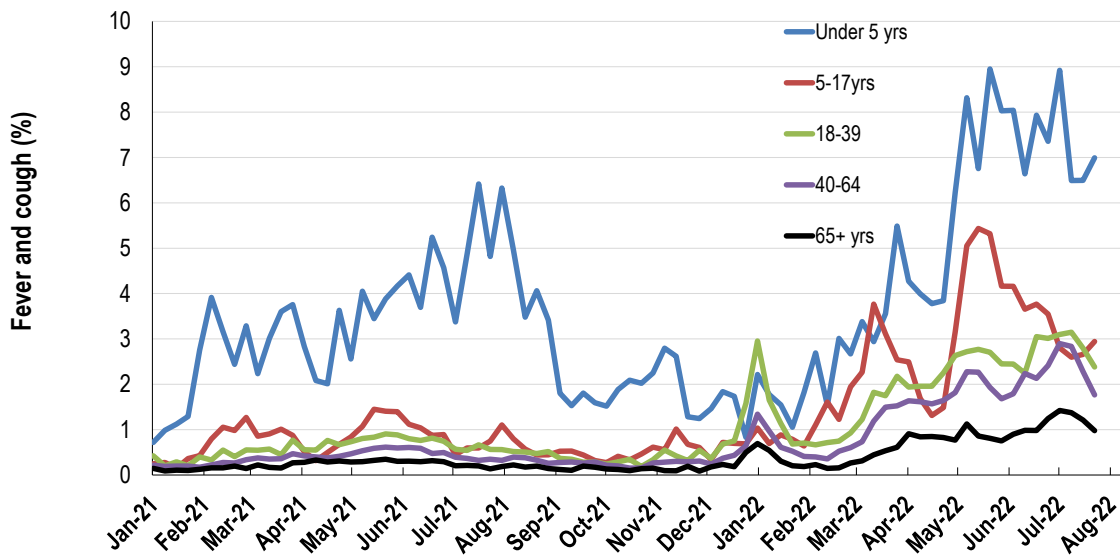
Fever, cough and absence from work or normal duties (Australia):



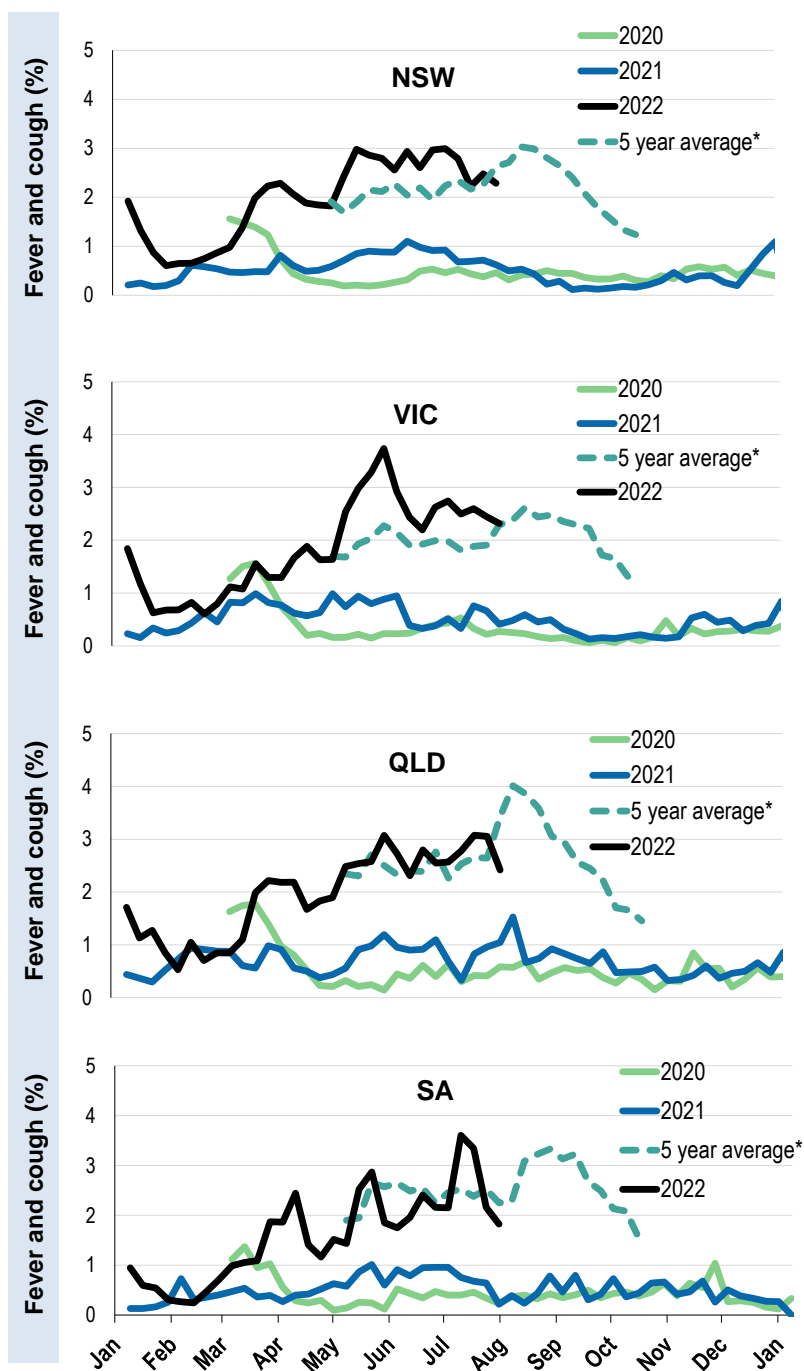
*5 year average is calculated using 2015, 2016, 2017, 2018 and 2019 data

^ Data are age standardised in this graph

Respiratory illness activity by age group in 2021 and 2022 (Australia):

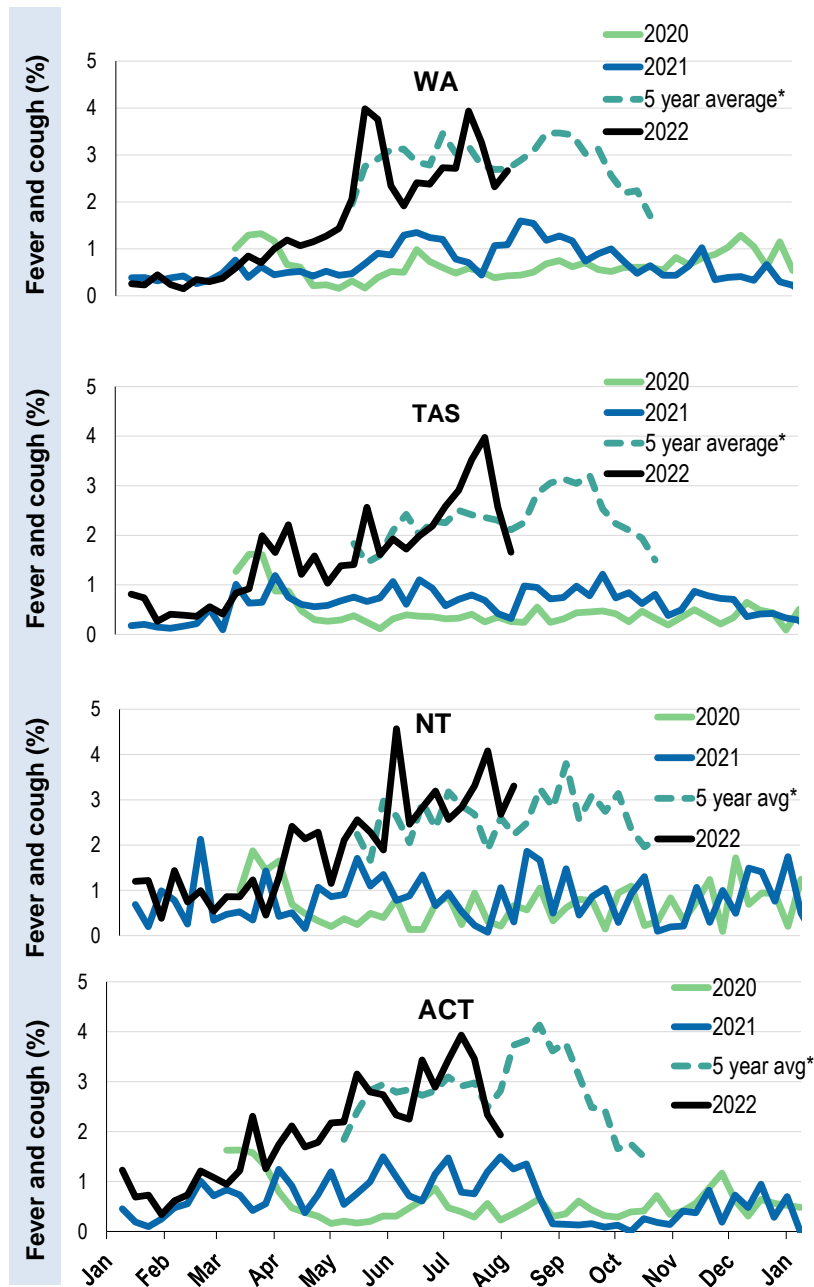


Respiratory illness activity by state/territory (age standardised):



*5 year average is calculated using 2015, 2016, 2017, 2018 and 2019 data

Respiratory illness activity by state/territory (age standardised):



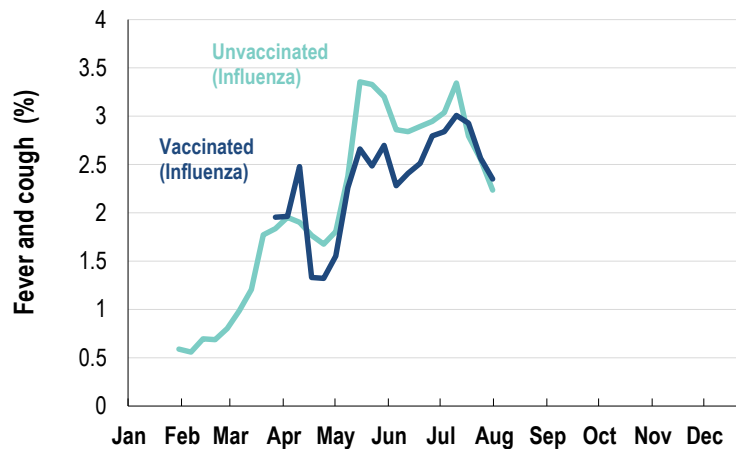
*5 year average is calculated using 2015, 2016, 2017, 2018 and 2019 data

Participation:
63,310 participants (63,720 last week)

State	Participants	% Rate/100,000 population
NSW	22361	35.3% 273.1
VIC	12597	19.9% 189.6
QLD	7751	12.2% 147.9
SA	5490	8.7% 309.7
WA	6353	10.0% 236.6
TAS	4081	6.4% 754.6
NT	945	1.5% 384.3
ACT	3732	5.9% 866.9
AUS	63310	100.0% 245.9

Vaccination rates:

Vaccinated participants:	COVID-19 vaccine				Influenza (%)
	At least 1 dose (%)	At least 2 doses (%)	3 doses (%)	4 doses (%)	
<5 years					70.5
5-11 years	88.9	81.6	1.2	0.0	65.2
12-17 years	98.0	96.4	24.7	0.5	57.5
18-64 years	99.3	98.7	93.6	30.5	81.7
65+ years	99.5	98.8	97.3	83.8	94.8
Working with patients	99.5	99.2	96.9	40.8	90.1
Aboriginal and/or Torres Strait Islander	93.2	91.4	71.3	31.8	73.1
Vaccinated overall (%)	97.6	96.8	87.5	47.3	84.8



* Data are age standardised in this chart