

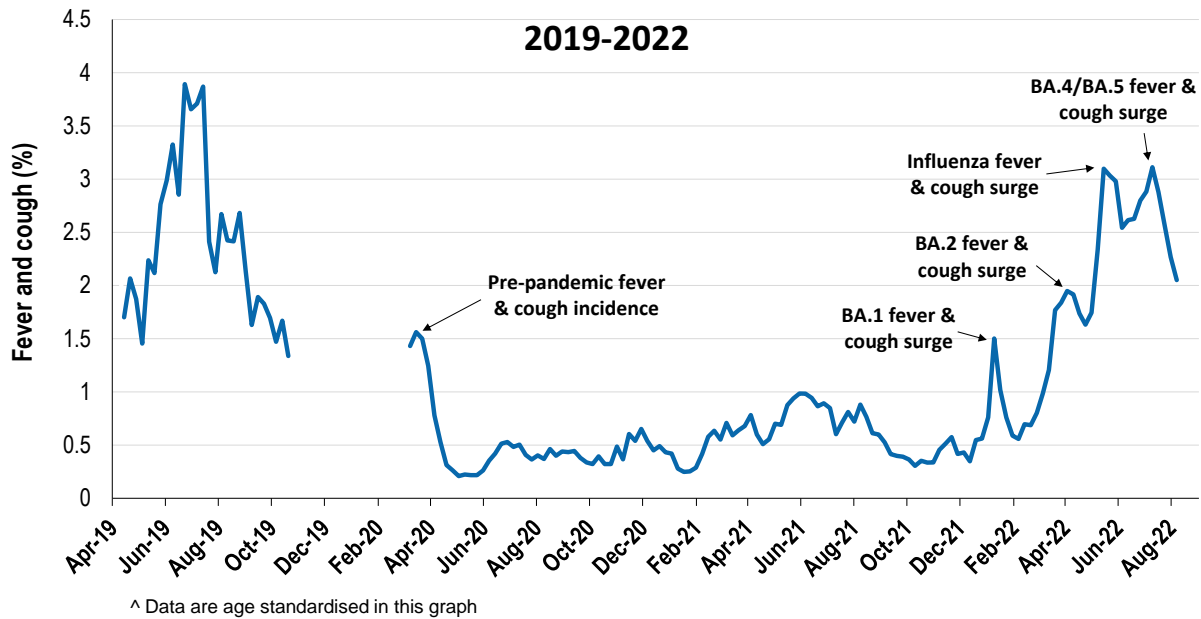
Respiratory illness levels are low and decreasing

62,754 participants this week

Respiratory illness activity*:

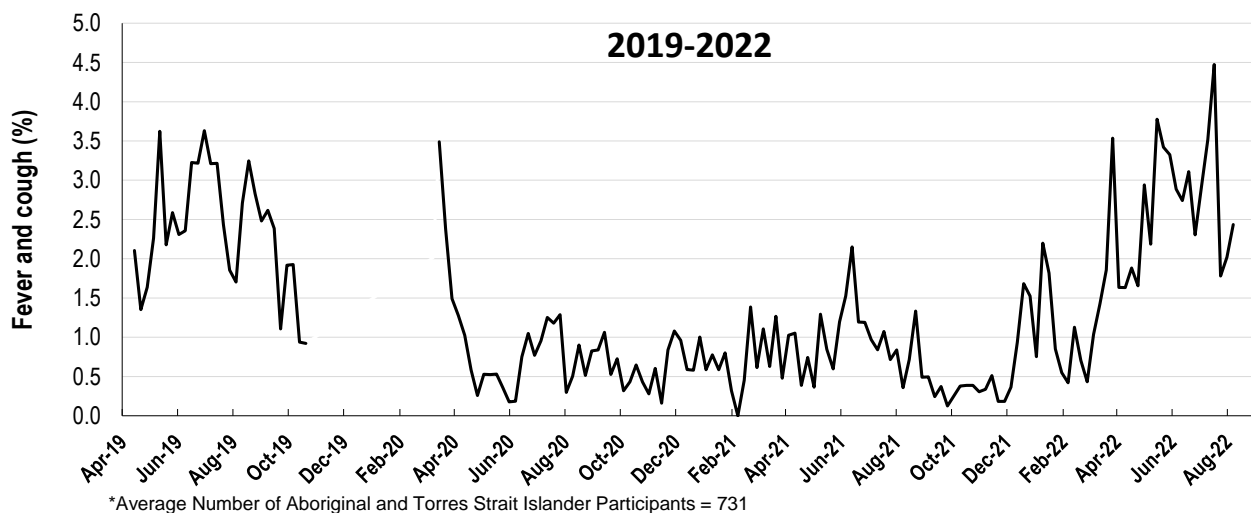
*Respiratory illness activity is defined as fever & cough for this report

2.1% this week: respiratory illness activity is low



Respiratory illness activity among Aboriginal and Torres Strait Islander participants

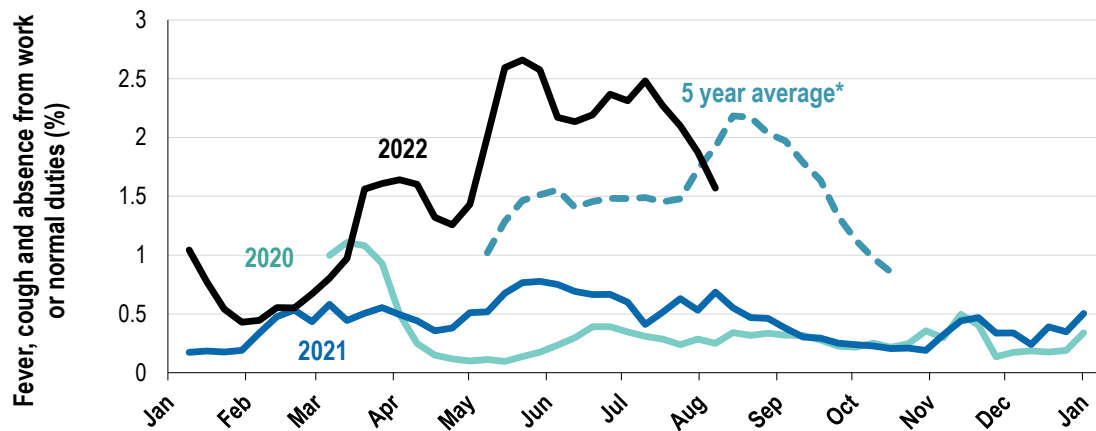
2.4% this week: respiratory illness activity is low



Respiratory illness severity:		
<i>40.8% of participants with fever and cough sought medical advice this week</i>		
Respiratory illness Severity	Week ending 07 August 2022 number (%)	Week ending 31 July 2022 number (%)
Number of participants	62754 (100%)	63310 (100%)
Fever & cough	922 (1.5%)	1083 (1.7%)
Fever, cough & time-off normal duties	691 (1.1%)	859 (1.4%)
Fever, cough & 3 or more days off work/normal duties	431 (0.7%)	566 (0.9%)
Number of participants with fever and cough	922 (100%)	1083 (100%)
*Sought medical advice for fever and cough	376 (40.8%)	460 (42.5%)
Admitted to hospital	5 (0.5%)	6 (0.6%)
Tested for influenza	172 (18.7%)	217 (20%)
Tested, result positive for influenza	10 (1.1%)	14 (1.3%)
Tested for COVID-19 by PCR	293 (31.8%)	384 (35.5%)
Tested for COVID-19 by PCR, result positive	125 (13.6%)	190 (17.5%)
Tested for COVID-19 by RAT	777 (84.3%)	950 (87.7%)
Tested for COVID-19 by RAT, result positive	316 (34.3%)	493 (45.5%)

*Includes those who sought medical advice from a general practitioner, COVID-19 clinic, emergency department, or were admitted to hospital for fever & cough

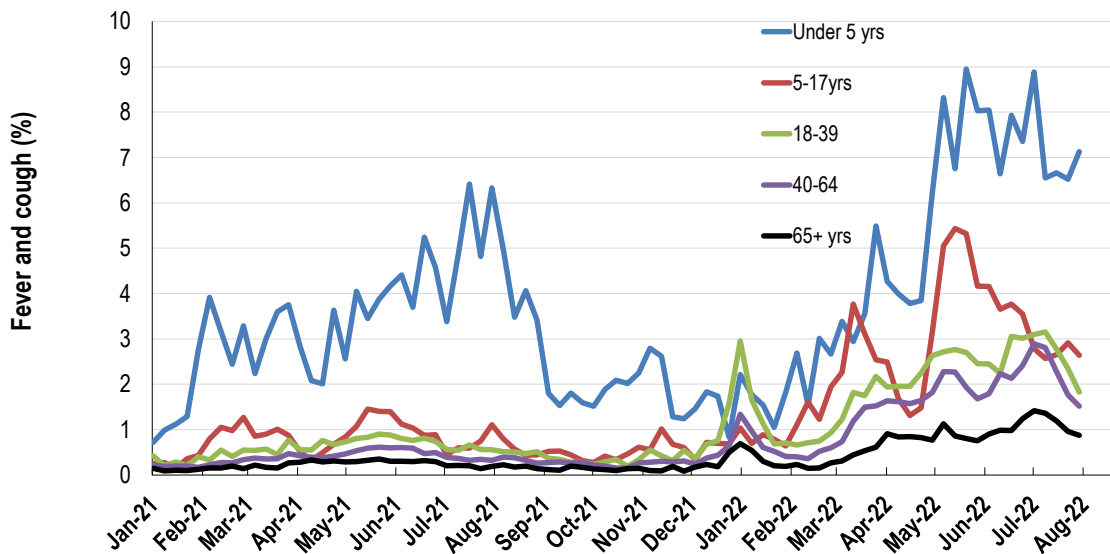
Fever, cough and absence from work or normal duties (Australia):



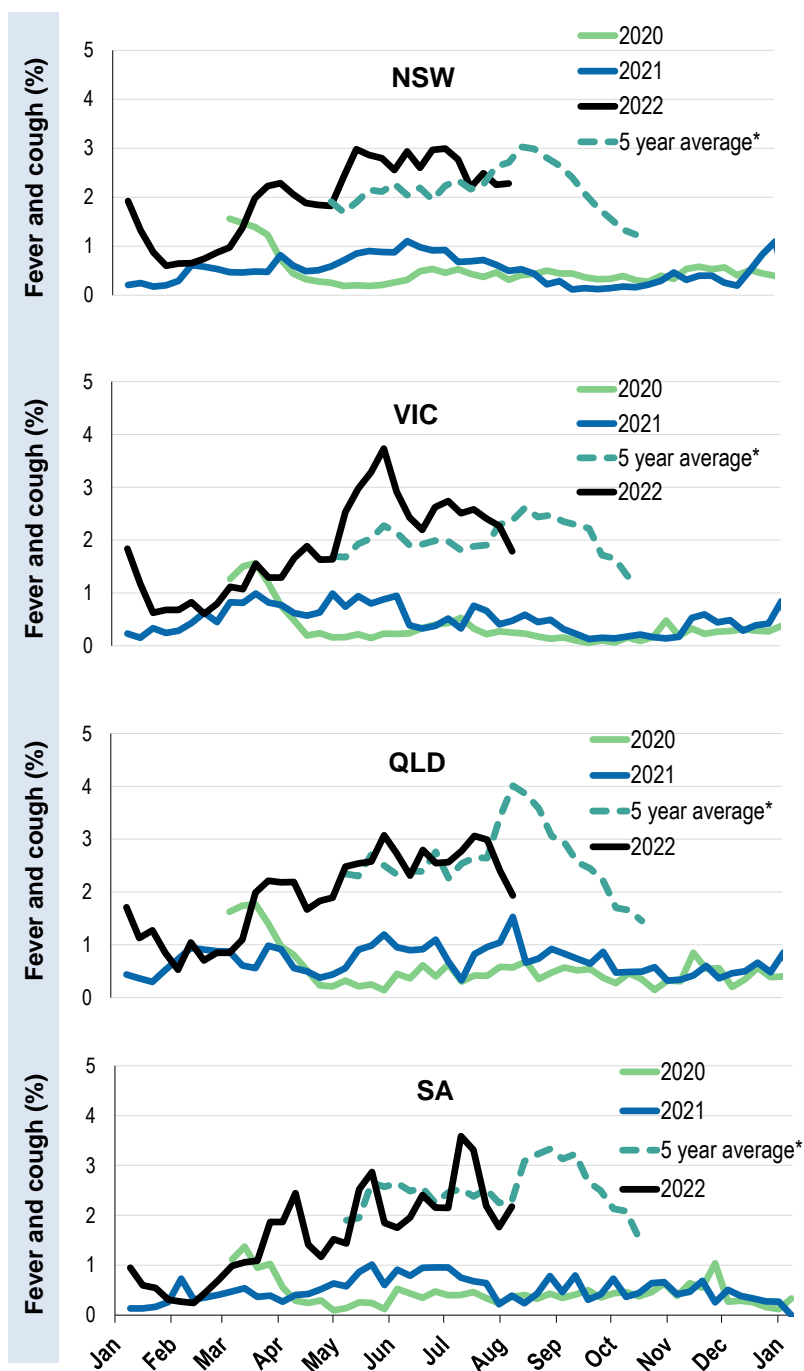
*5 year average is calculated using 2015, 2016, 2017, 2018 and 2019 data

^ Data are age standardised in this graph

Respiratory illness activity by age group in 2021 and 2022 (Australia):

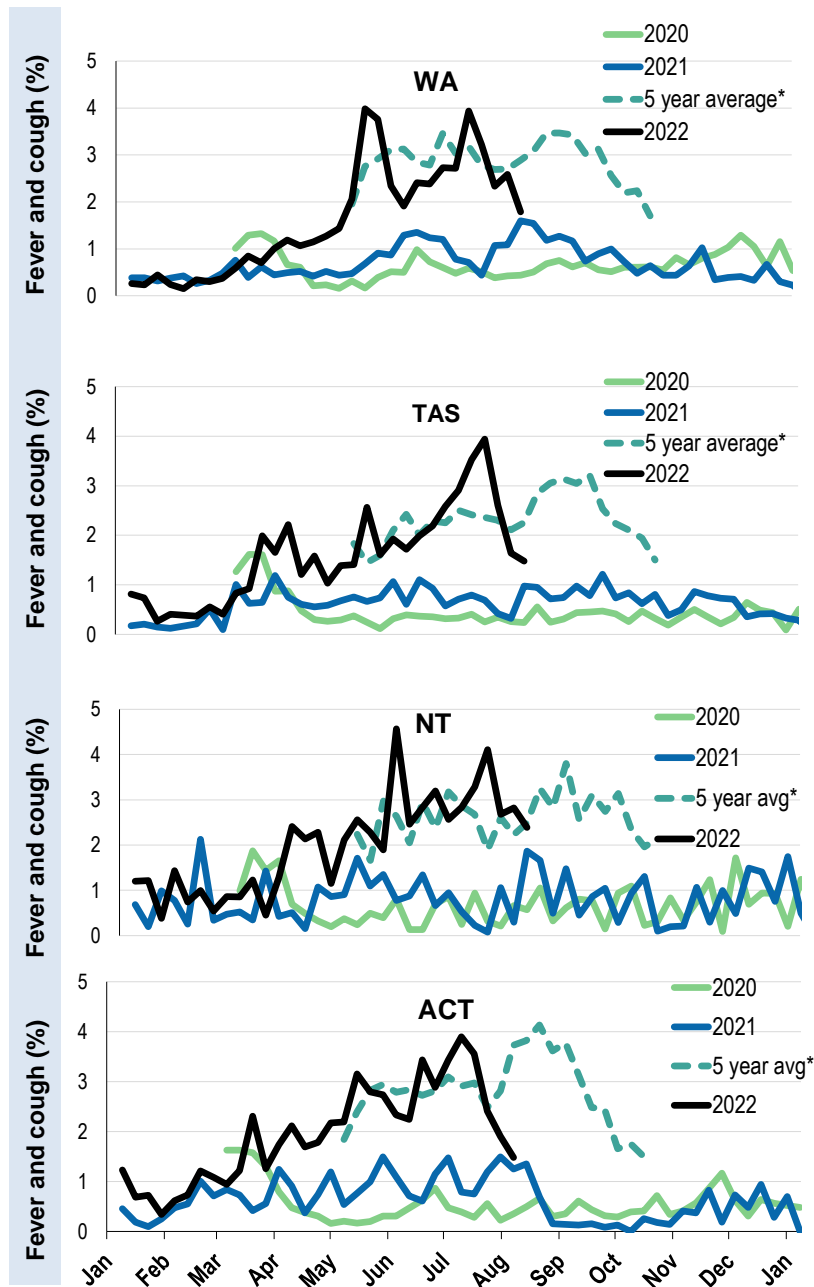


Respiratory illness activity by state/territory (age standardised):



*5 year average is calculated using 2015, 2016, 2017, 2018 and 2019 data

Respiratory illness activity by state/territory (age standardised):



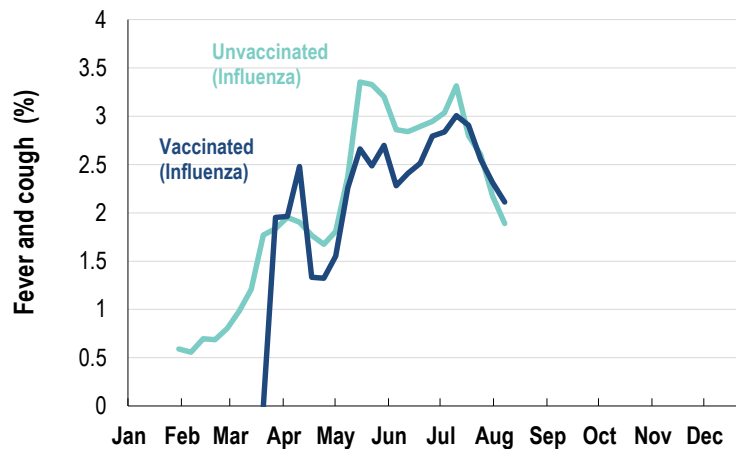
*5 year average is calculated using 2015, 2016, 2017, 2018 and 2019 data

Participation:
62,754 participants (63,310 last week)

State	Participants	% Rate/100,000 population
NSW	22240	35.4% 271.7
VIC	12508	19.9% 188.3
QLD	7670	12.2% 146.4
SA	5486	8.7% 309.5
WA	6185	9.9% 230.3
TAS	3979	6.3% 735.8
NT	984	1.6% 400.2
ACT	3702	5.9% 859.9
AUS	62754	100.0% 243.7

Vaccination rates:

Vaccinated participants:	COVID-19 vaccine				Influenza (%)
	At least 1 dose (%)	At least 2 doses (%)	3 doses (%)	4 doses (%)	
<5 years					71.2
5-11 years	88.0	81.4	1.4	0.0	65.9
12-17 years	98.0	96.9	24.5	0.6	59.2
18-64 years	99.3	99.0	94.0	36.4	82.2
65+ years	99.5	99.2	97.7	85.4	95.0
Working with patients	99.6	99.4	97.2	46.4	90.2
Aboriginal and/or Torres Strait Islander	94.0	92.9	73.9	34.3	74.0
Vaccinated overall (%)	97.7	97.2	88.0	51.5	85.3



* Data are age standardised in this chart