

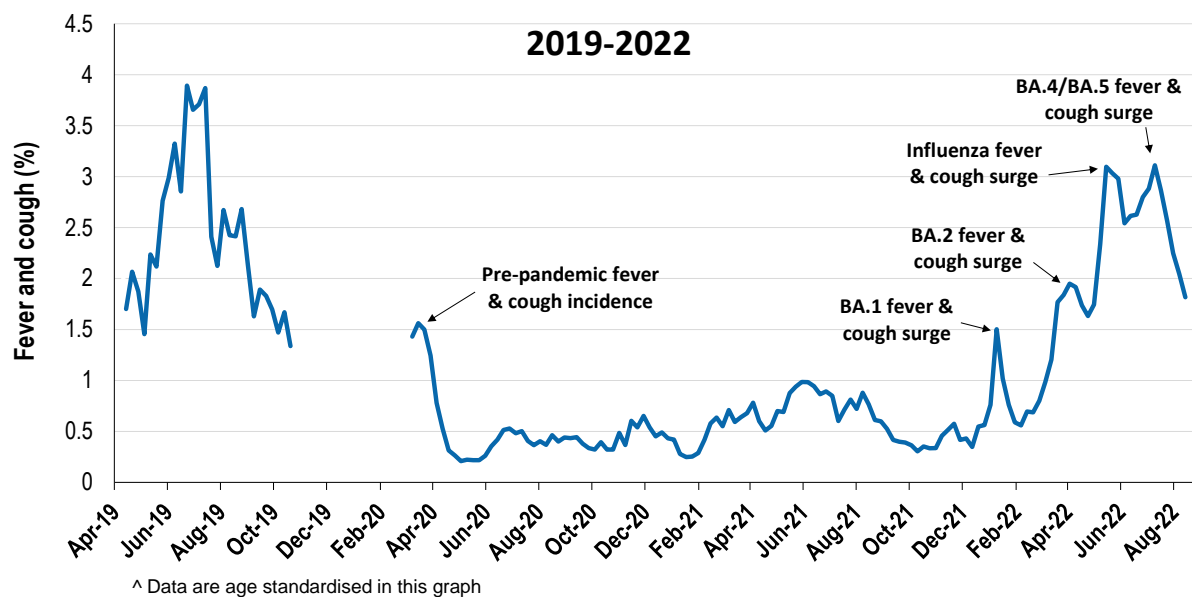
Respiratory illness levels are low and decreasing in all age groups

62,247 participants this week

Respiratory illness activity*:

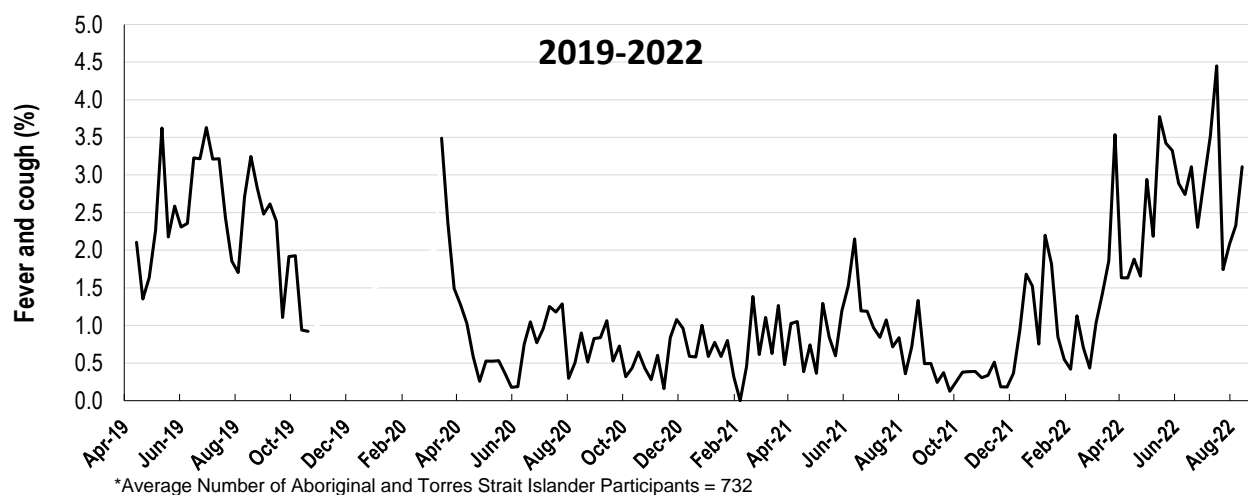
*Respiratory illness activity is defined as fever & cough for this report

1.8% this week: respiratory illness activity is low



Respiratory illness activity among Aboriginal and Torres Strait Islander participants

3.1% this week: respiratory illness activity is moderate

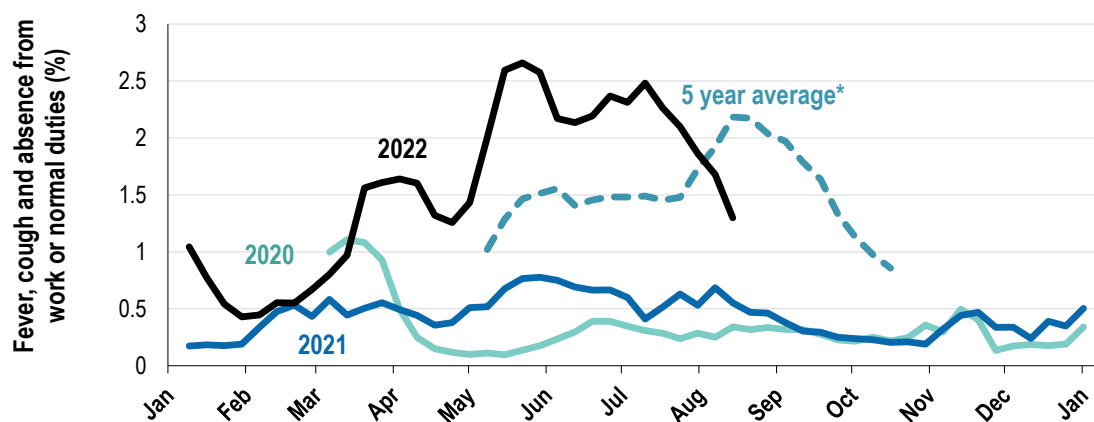


Respiratory illness severity:
34.6% of participants with fever and cough sought medical advice this week

Respiratory illness Severity	Week ending 14 August 2022 number (%)	Week ending 07 August 2022 number (%)
Number of participants	62247 (100%)	62754 (100%)
Fever & cough	778 (1.2%)	922 (1.5%)
Fever, cough & time-off normal duties	548 (0.9%)	721 (1.1%)
Fever, cough & 3 or more days off work/normal duties	368 (0.6%)	431 (0.7%)
Number of participants with fever and cough	778 (100%)	922 (100%)
*Sought medical advice for fever and cough	269 (34.6%)	403 (43.7%)
Admitted to hospital	5 (0.6%)	6 (0.7%)
Tested for influenza	121 (15.6%)	184 (20%)
Tested, result positive for influenza	10 (1.3%)	10 (1.1%)
Tested for COVID-19 by PCR	190 (24.4%)	303 (32.9%)
Tested for COVID-19 by PCR, result positive	72 (9.3%)	129 (14%)
Tested for COVID-19 by RAT	637 (81.9%)	784 (85%)
Tested for COVID-19 by RAT, result positive	228 (29.3%)	329 (35.7%)

*Includes those who sought medical advice from a general practitioner, COVID-19 clinic, emergency department, or were admitted to hospital for fever & cough

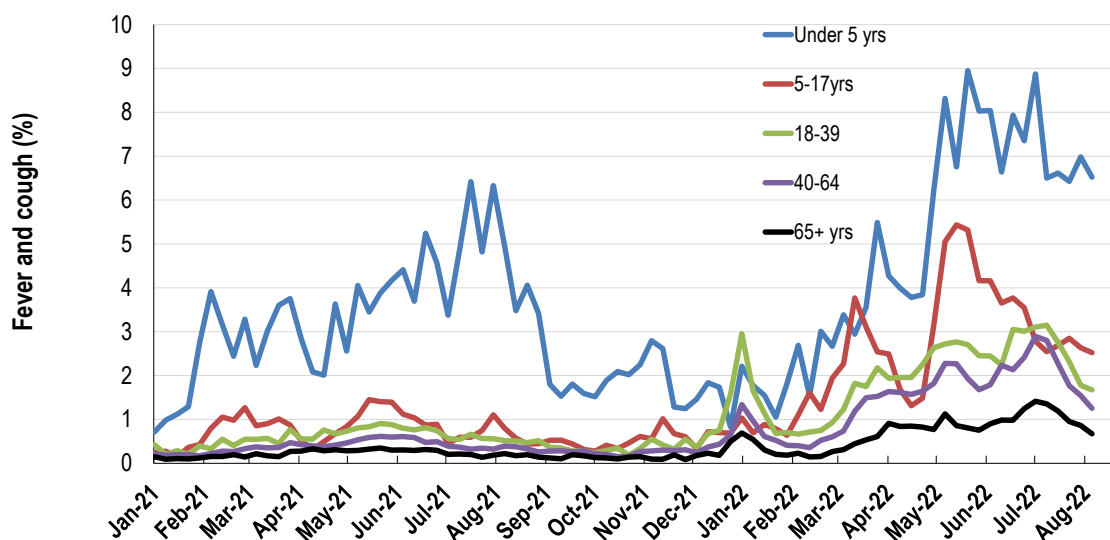
Fever, cough and absence from work or normal duties (Australia):



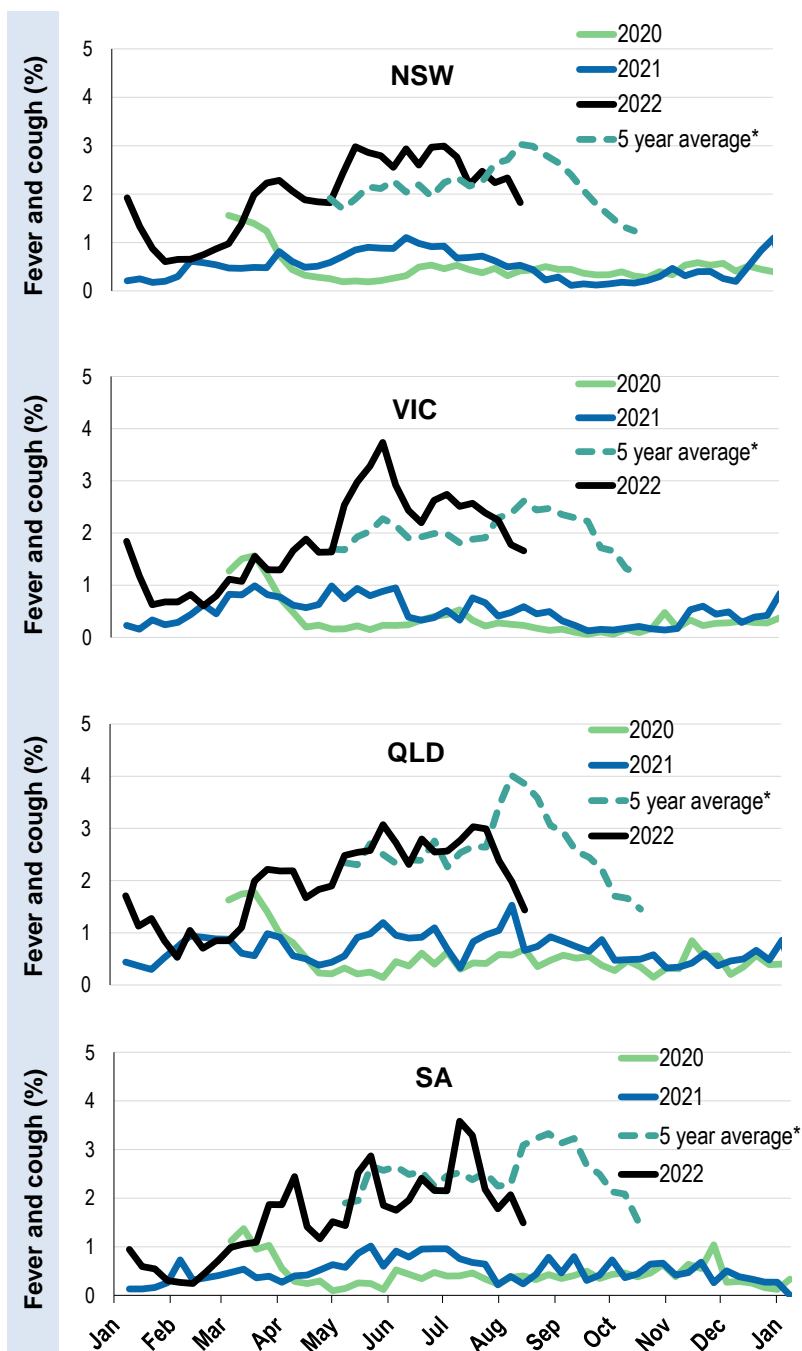
*5 year average is calculated using 2015, 2016, 2017, 2018 and 2019 data

^ Data are age standardised in this graph

Respiratory illness activity by age group in 2021 and 2022 (Australia):

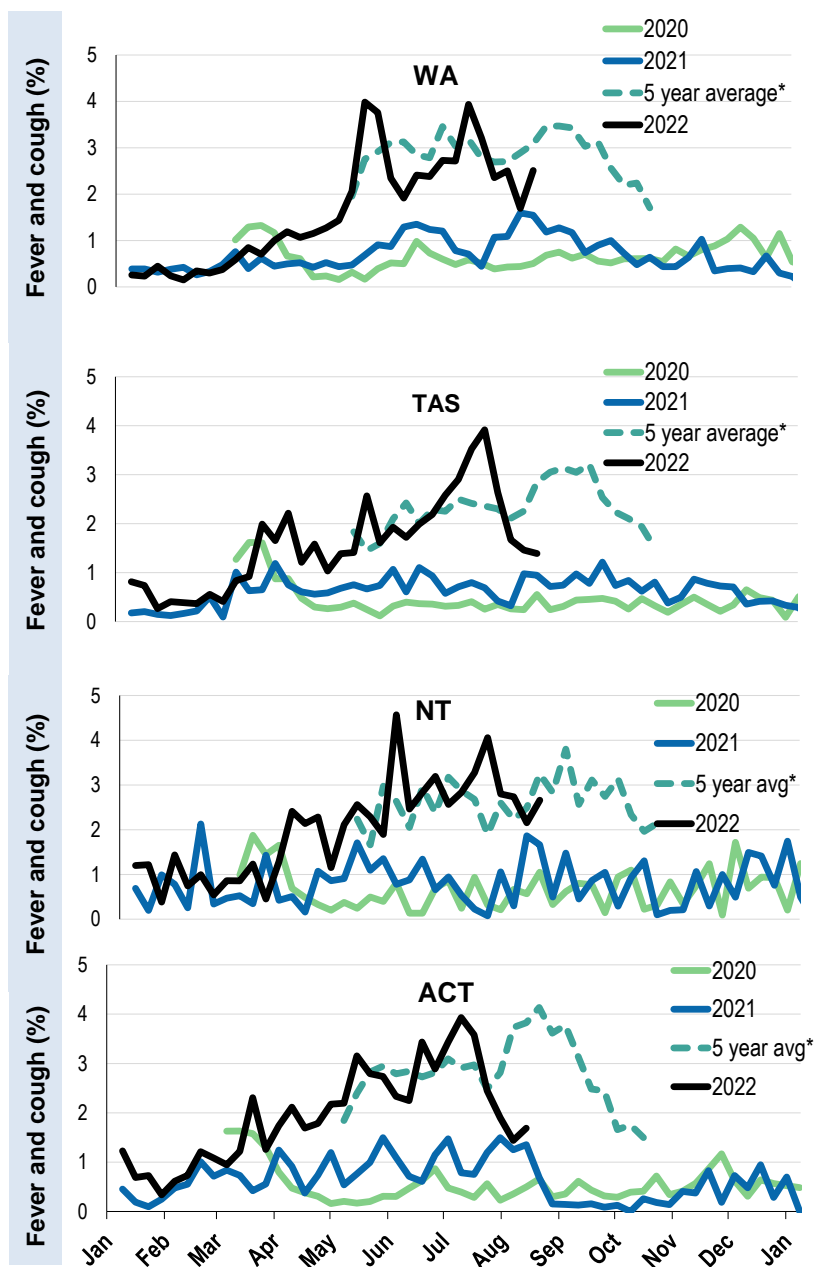


Respiratory illness activity by state/territory (age standardised):



*5 year average is calculated using 2015, 2016, 2017, 2018 and 2019 data

Respiratory illness activity by state/territory (age standardised):



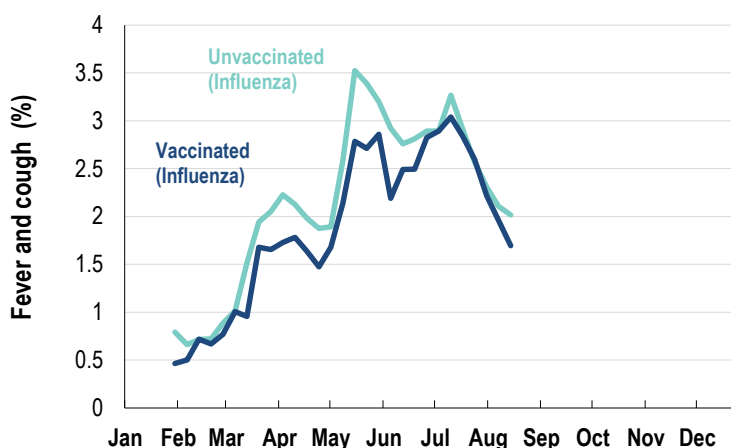
*5 year average is calculated using 2015, 2016, 2017, 2018 and 2019 data

Participation:
62,247 participants (62,754 last week)

State	Participants	%	Rate/100,000 population
NSW	22025	35.4%	269.0
VIC	12316	19.8%	185.4
QLD	7646	12.3%	145.9
SA	5488	8.8%	309.6
WA	6166	9.9%	229.6
TAS	3961	6.4%	732.4
NT	1027	1.6%	417.6
ACT	3618	5.8%	840.4
AUS	62247	100.0%	241.7

Vaccination rates:

Vaccinated participants:	COVID-19 vaccine				Influenza (%)
	At least 1 dose (%)	At least 2 doses (%)	3 doses (%)	4 doses (%)	
<5 years					47.7
5-11 years	87.8	81.5	1.3	0.0	41.3
12-17 years	97.9	96.8	24.5	0.5	32.5
18-64 years	99.3	99.2	94.2	40.1	67.1
65+ years	99.5	99.4	98.0	87.3	82.4
Working with patients	99.5	99.5	97.5	50.1	79.3
Aboriginal and/or Torres Strait Islander	93.3	91.9	72.5	34.5	61.6
Vaccinated overall (%)	97.7	97.3	88.3	54.1	70.2



* Data are age standardised in this chart

