

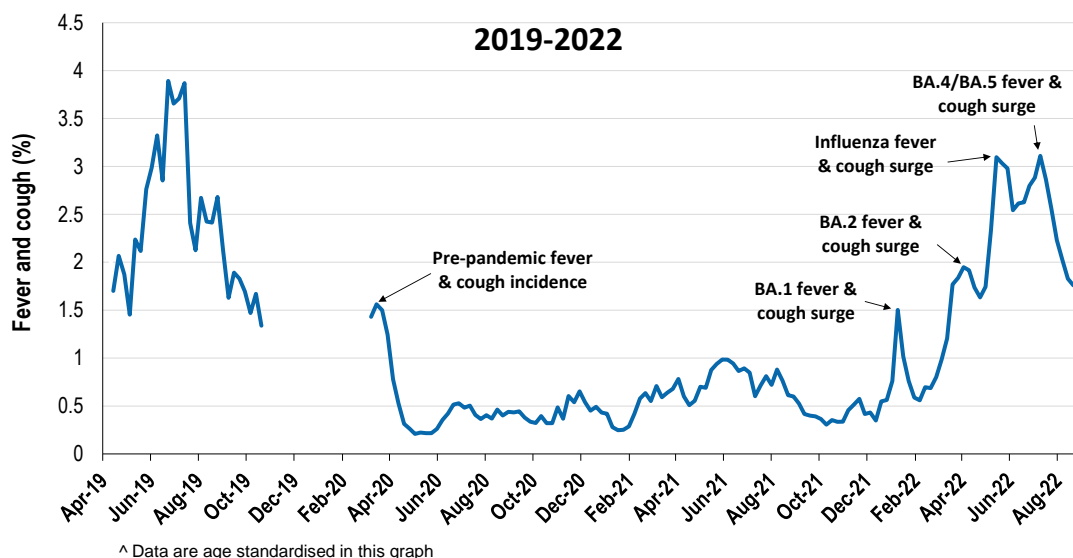
Respiratory illness levels are low and decreasing

62,426 participants this week

Respiratory illness activity*:

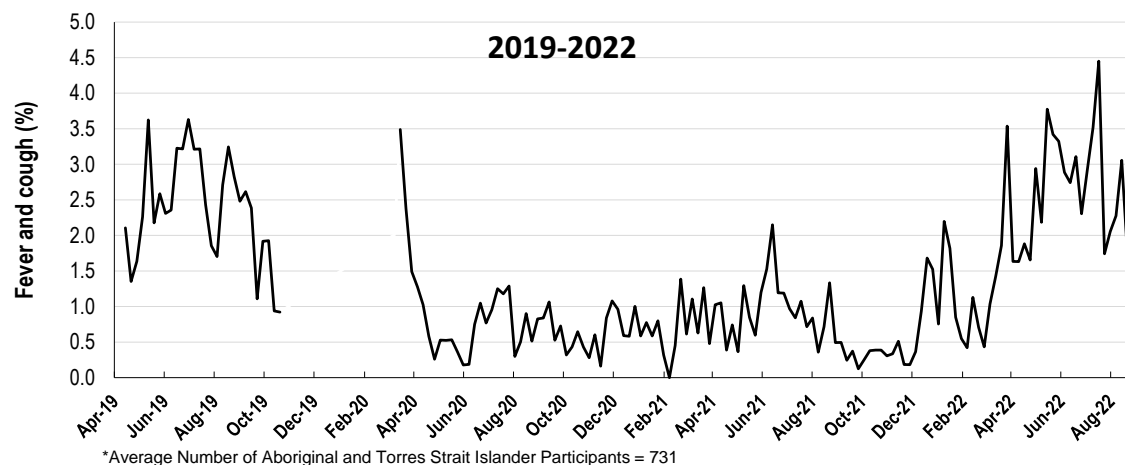
*Respiratory illness activity is defined as fever & cough for this report

1.8% this week: respiratory illness activity is low



Respiratory illness activity among Aboriginal and Torres Strait Islander participants

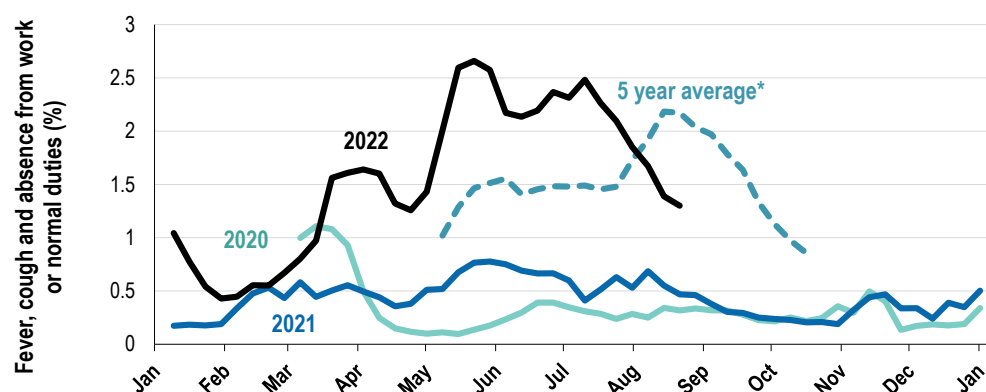
1.7% this week: respiratory illness activity is low



Respiratory illness severity:		
36.8% of participants with fever and cough sought medical advice this week		
Respiratory illness Severity	Week ending 21 August 2022 number (%)	Week ending 14 August 2022 number (%)
Number of participants	62426 (100%)	62247 (100%)
Fever & cough	725 (1.2%)	778 (1.2%)
Fever, cough & time-off normal duties	493 (0.8%)	583 (0.9%)
Fever, cough & 3 or more days off work/normal duties	320 (0.5%)	368 (0.6%)
Number of participants with fever and cough	725 (100%)	778 (100%)
*Sought medical advice for fever and cough	267 (36.8%)	302 (38.8%)
Admitted to hospital	5 (0.7%)	6 (0.8%)
Tested for influenza	135 (18.6%)	138 (17.7%)
Tested, result positive for influenza	7 (1%)	12 (1.5%)
Tested for COVID-19 by PCR	203 (28%)	214 (27.5%)
Tested for COVID-19 by PCR, result positive	69 (9.5%)	76 (9.8%)
Tested for COVID-19 by RAT	585 (80.7%)	648 (83.3%)
Tested for COVID-19 by RAT, result positive	177 (24.4%)	239 (30.7%)

*Includes those who sought medical advice from a general practitioner, COVID-19 clinic, emergency department, or were admitted to hospital for fever & cough

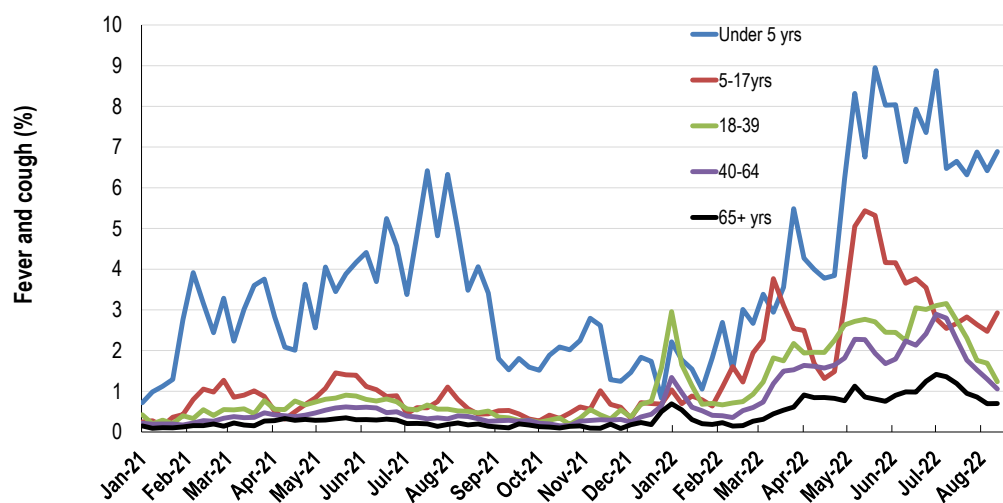
Fever, cough and absence from work or normal duties (Australia):



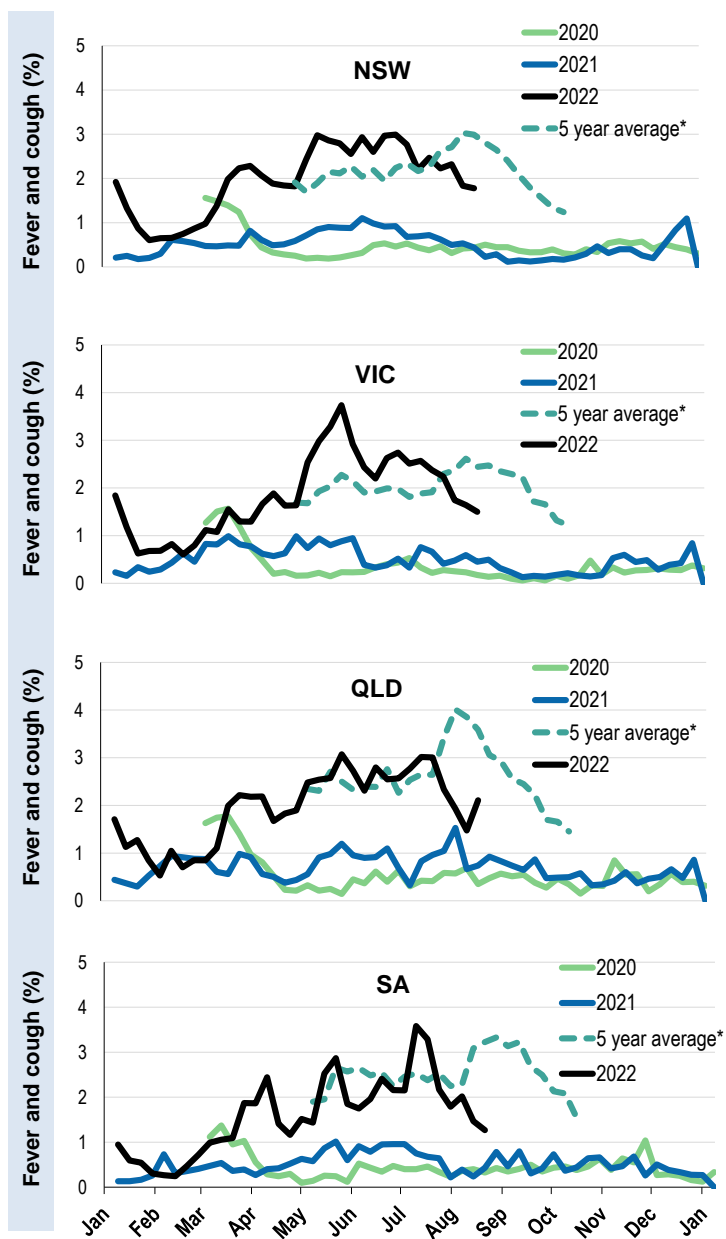
*5 year average is calculated using 2015, 2016, 2017, 2018 and 2019 data

^ Data are age standardised in this graph

Respiratory illness activity by age group in 2021 and 2022 (Australia):

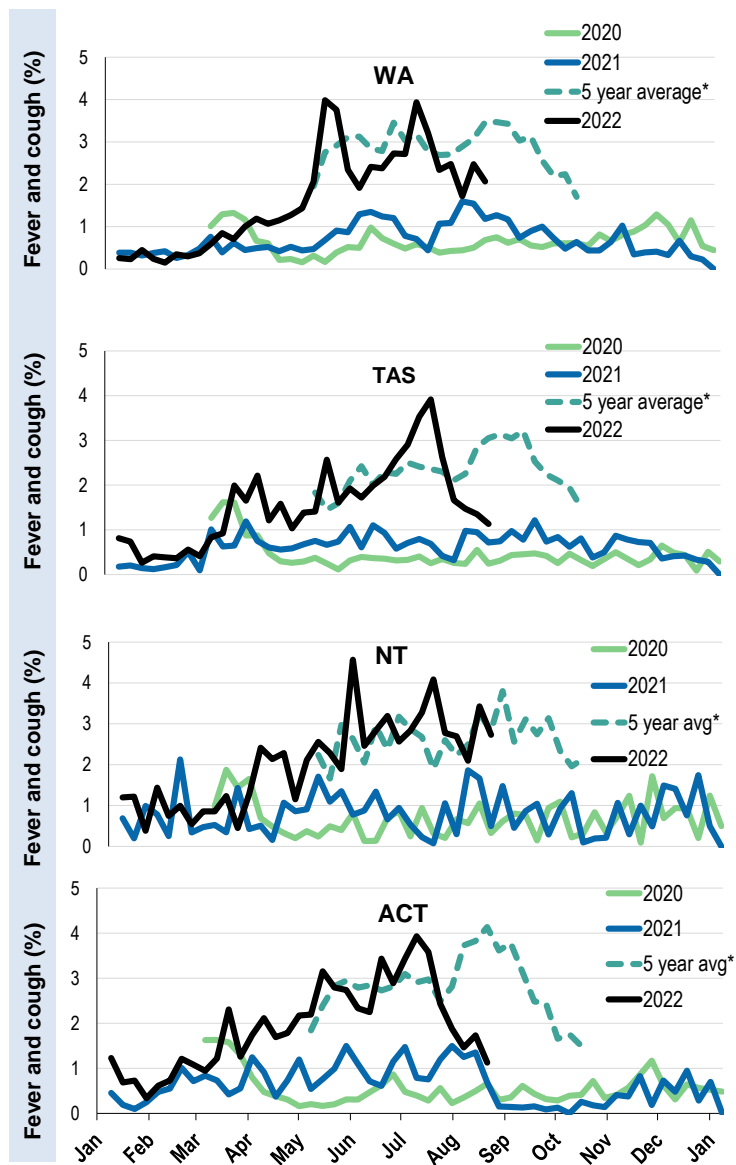


Respiratory illness activity by state/territory (age standardised):



*5 year average is calculated using 2015, 2016, 2017, 2018 and 2019 data

Respiratory illness activity by state/territory (age standardised):



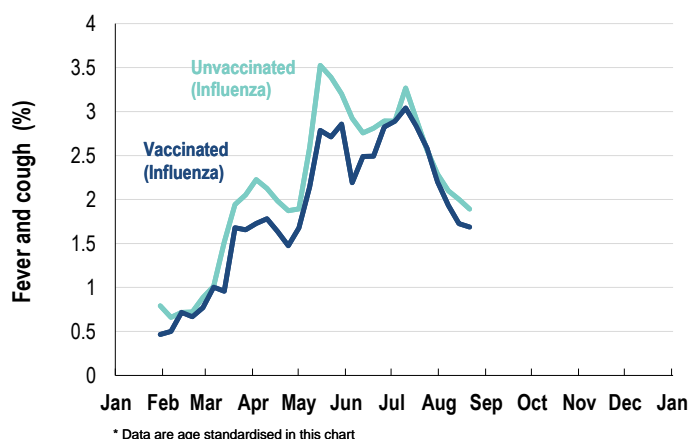
*5 year average is calculated using 2015, 2016, 2017, 2018 and 2019 data

Participation:
participants (last week)

State	Participants	% Rate/100,000 population
NSW	22055	35.3% 269.4
VIC	12439	19.9% 187.2
QLD	7666	12.3% 146.3
SA	5427	8.7% 306.1
WA	6206	9.9% 231.1
TAS	3984	6.4% 736.7
NT	976	1.6% 396.9
ACT	3673	5.9% 853.2
AUS	62426	100.0% 242.4

Vaccination rates:

Vaccinated participants:	COVID-19 vaccine				Influenza (%)
	At least 1 dose (%)	At least 2 doses (%)	3 doses (%)	4 doses (%)	
<5 years					46.8
5-11 years	88.1	81.9	1.3	0.0	41.6
12-17 years	98.1	97.1	24.7	0.7	33.4
18-64 years	99.3	99.2	94.4	42.5	67.1
65+ years	99.5	99.4	98.1	88.3	82.5
Working with patients	99.6	99.5	97.5	52.4	79.1
Aboriginal and/or Torres Strait Islander	93.6	92.5	73.3	36.4	60.3
Vaccinated overall (%)	97.7	97.3	88.4	55.9	70.3

Respiratory illness activity by self-reported influenza vaccination status, 2022 (Australia):

Respiratory illness activity by self-reported COVID-19 vaccination status, 2022 (Australia):
