

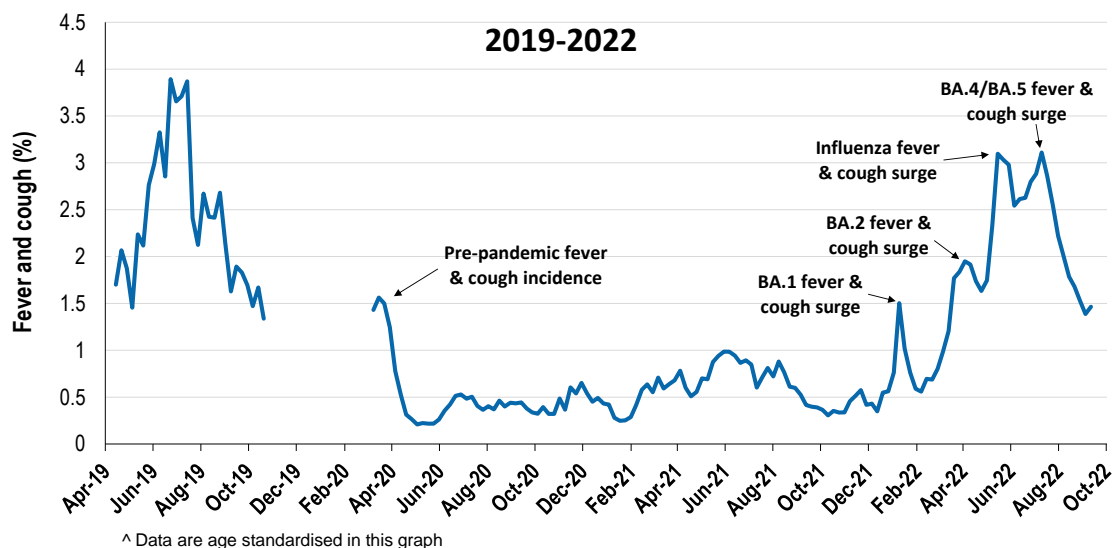
Respiratory illness levels are low but increasing in children under 5 years

59,911 participants this week

Respiratory illness activity*:

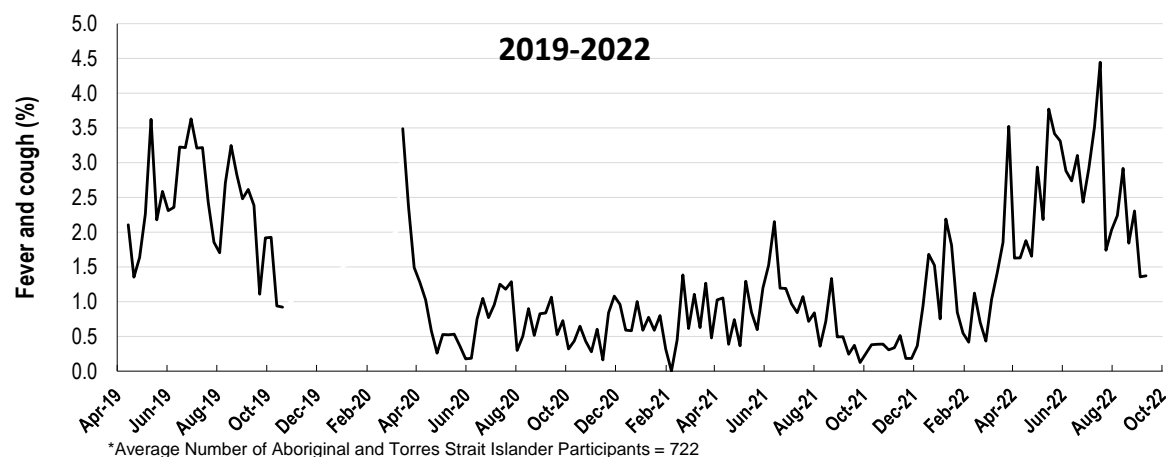
*Respiratory illness activity is defined as fever & cough for this report

1.5% this week: respiratory illness activity is low



Respiratory illness activity among Aboriginal and Torres Strait Islander participants

1.4% this week: respiratory illness activity is low

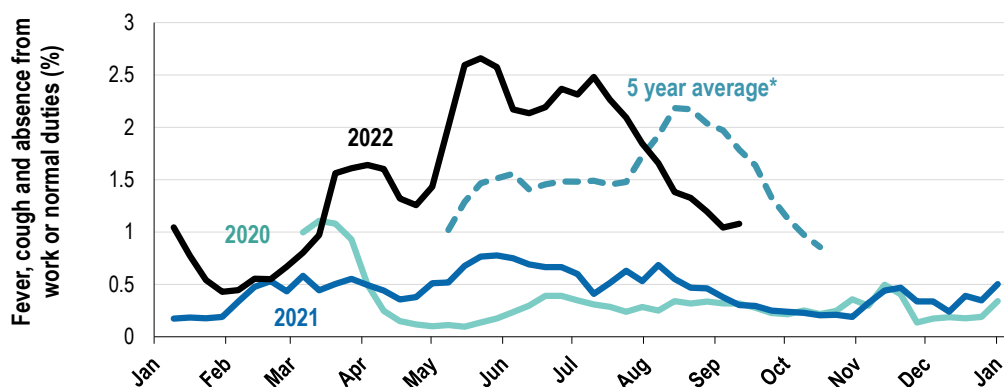


Respiratory illness severity:
37.3% of participants with fever and cough sought medical advice this week

| Respiratory illness Severity | Week ending 11 September 2022 number (%) | Week ending 04 September 2022 number (%) |
|---|---|---|
| Number of participants | 59911 (100%) | 60015 (100%) |
| Fever & cough | 544 (0.9%) | 593 (1%) |
| Fever, cough & time-off normal duties | 373 (0.6%) | 430 (0.7%) |
| Fever, cough & 3 or more days off work/normal duties | 227 (0.4%) | 259 (0.4%) |
| Number of participants with fever and cough | 544 (100%) | 593 (100%) |
| *Sought medical advice for fever and cough | 203 (37.3%) | 266 (44.9%) |
| Admitted to hospital | 4 (0.7%) | 5 (0.8%) |
| Tested for influenza | 76 (14%) | 112 (18.9%) |
| Tested, result positive for influenza | 3 (0.6%) | 10 (1.7%) |
| Tested for COVID-19 by PCR | 141 (25.9%) | 180 (30.4%) |
| Tested for COVID-19 by PCR, result positive | 27 (5%) | 45 (7.6%) |
| Tested for COVID-19 by RAT | 421 (77.4%) | 469 (79.1%) |
| Tested for COVID-19 by RAT, result positive | 90 (16.5%) | 122 (20.6%) |

*Includes those who sought medical advice from a general practitioner, COVID-19 clinic, emergency department, or were admitted to hospital for fever & cough

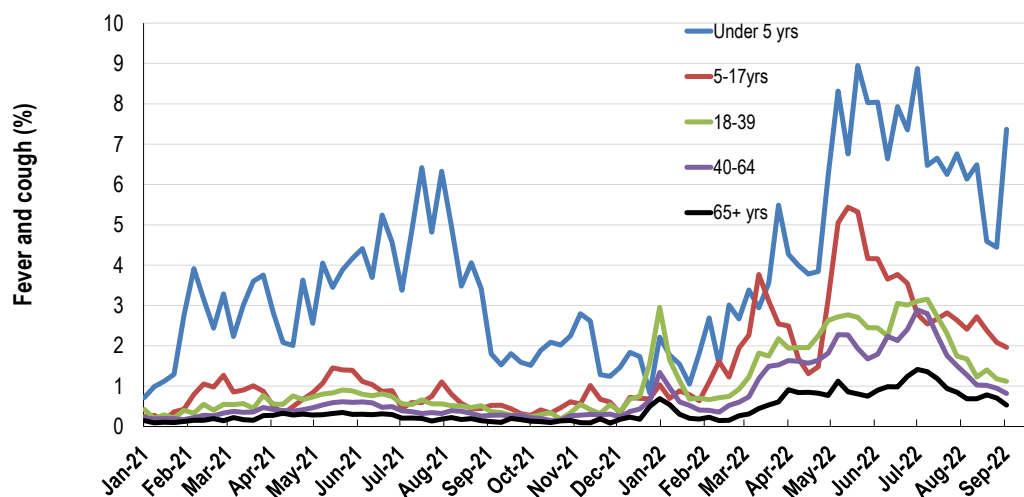
Fever, cough and absence from work or normal duties (Australia):



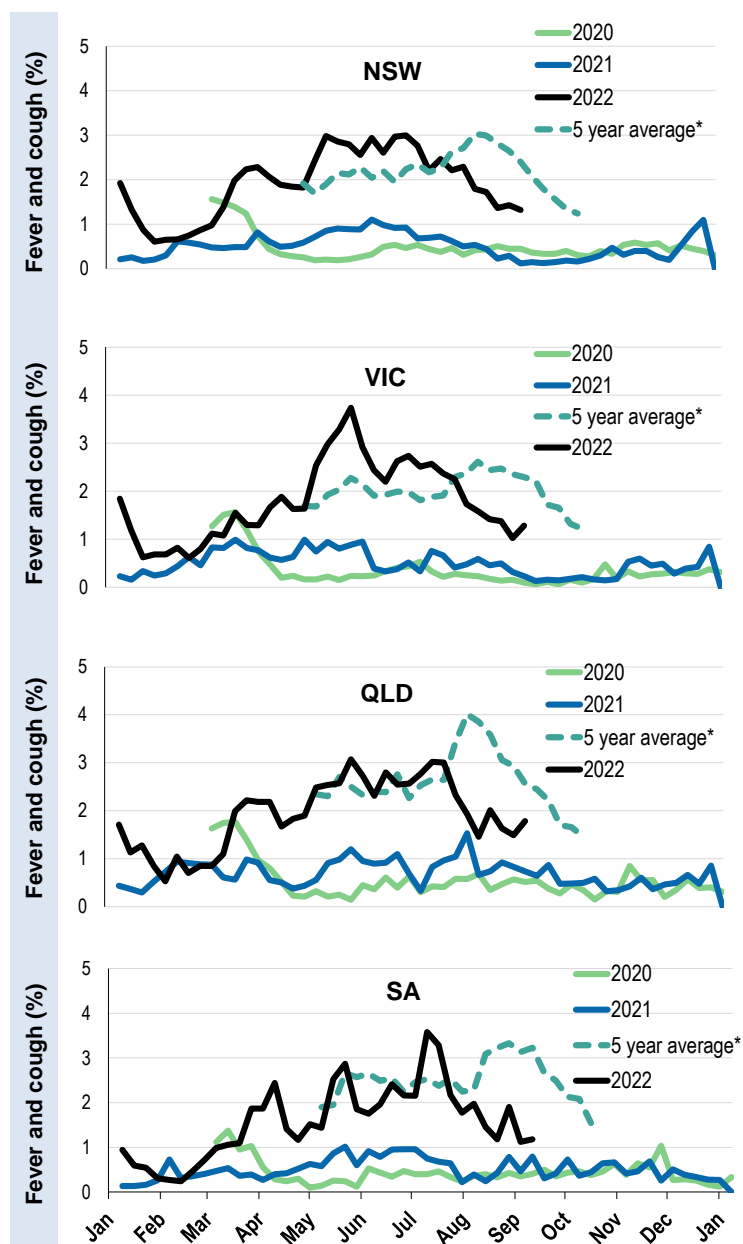
*5 year average is calculated using 2015, 2016, 2017, 2018 and 2019 data

^ Data are age standardised in this graph

Respiratory illness activity by age group in 2021 and 2022 (Australia):

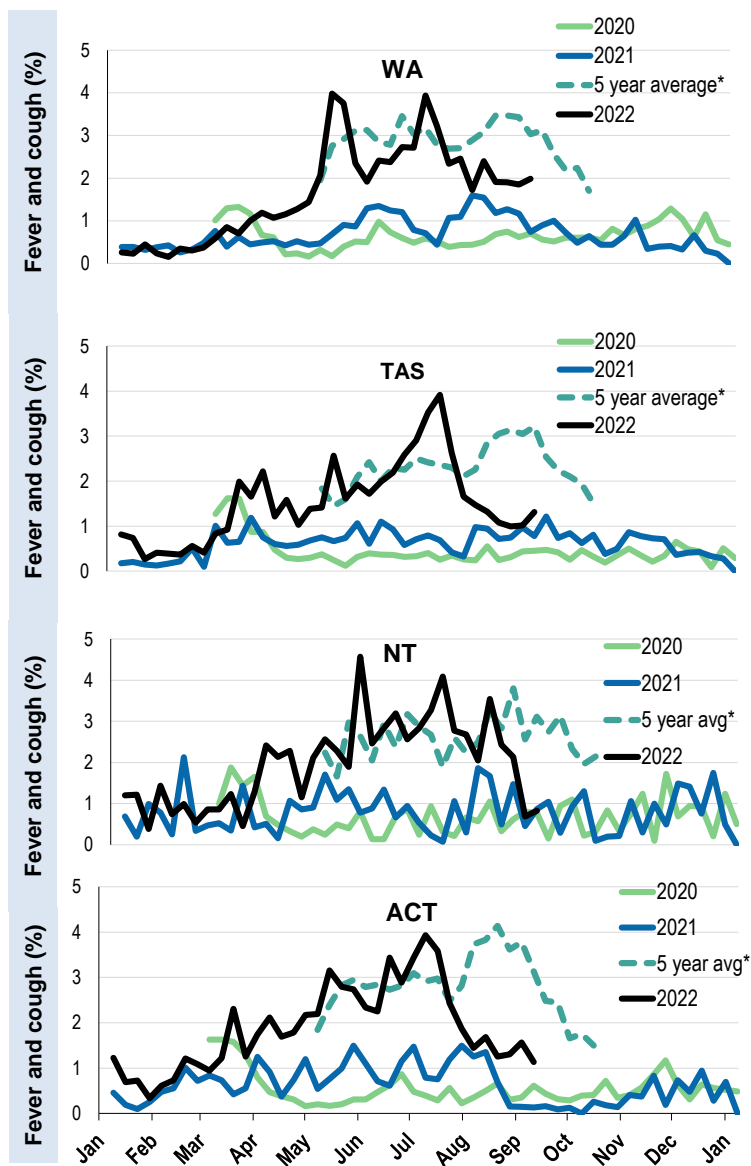


Respiratory illness activity by state/territory (age standardised):



*5 year average is calculated using 2015, 2016, 2017, 2018 and 2019 data

Respiratory illness activity by state/territory (age standardised):



*5 year average is calculated using 2015, 2016, 2017, 2018 and 2019 data

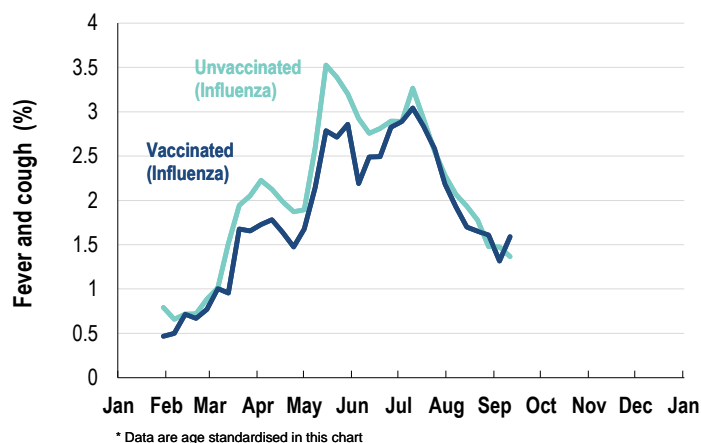
Participation:

participants (last week)

| State | Participants | % | Rate/100,000 population |
|-------|--------------|--------|-------------------------|
| NSW | 21167 | 35.3% | 258.6 |
| VIC | 11822 | 19.7% | 178.0 |
| QLD | 7350 | 12.3% | 140.3 |
| SA | 5350 | 8.9% | 301.8 |
| WA | 5897 | 9.8% | 219.6 |
| TAS | 3814 | 6.4% | 705.3 |
| NT | 968 | 1.6% | 393.7 |
| ACT | 3543 | 5.9% | 823.0 |
| AUS | 59911 | 100.0% | 232.7 |

Vaccination rates:

| Vaccinated participants: | COVID-19 vaccine | | | | Influenza (%) |
|--|---------------------|----------------------|-------------|-------------|---------------|
| | At least 1 dose (%) | At least 2 doses (%) | 3 doses (%) | 4 doses (%) | |
| <5 years | | | | | 47.1 |
| 5-11 years | 87.5 | 81.9 | 1.4 | 0.0 | 41.3 |
| 12-17 years | 97.9 | 96.9 | 24.7 | 0.7 | 33.6 |
| 18-64 years | 99.3 | 99.2 | 94.5 | 46.4 | 67.4 |
| 65+ years | 99.5 | 99.4 | 98.2 | 89.9 | 82.7 |
| Working with patients | 99.5 | 99.5 | 97.6 | 55.9 | 79.9 |
| Aboriginal and/or Torres Strait Islander | 93.8 | 93.0 | 74.4 | 40.1 | 64.2 |
| Vaccinated overall (%) | 97.7 | 97.4 | 88.7 | 58.9 | 70.7 |

Respiratory illness activity by self-reported influenza vaccination status, 2022 (Australia):

Respiratory illness activity by self-reported COVID-19 vaccination status, 2022 (Australia):
