

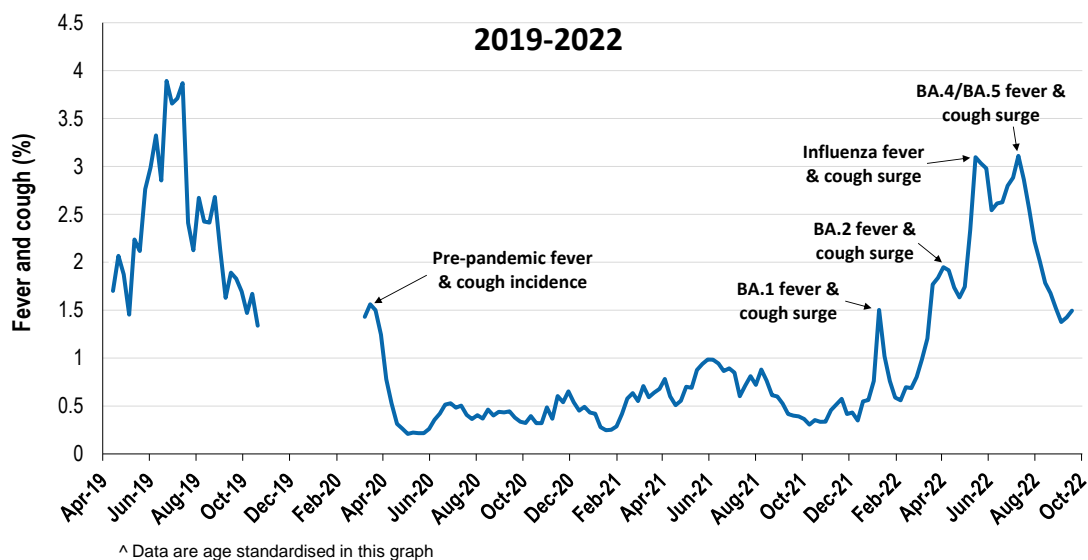
Respiratory illness levels are low

57,676 participants this week

Respiratory illness activity*:

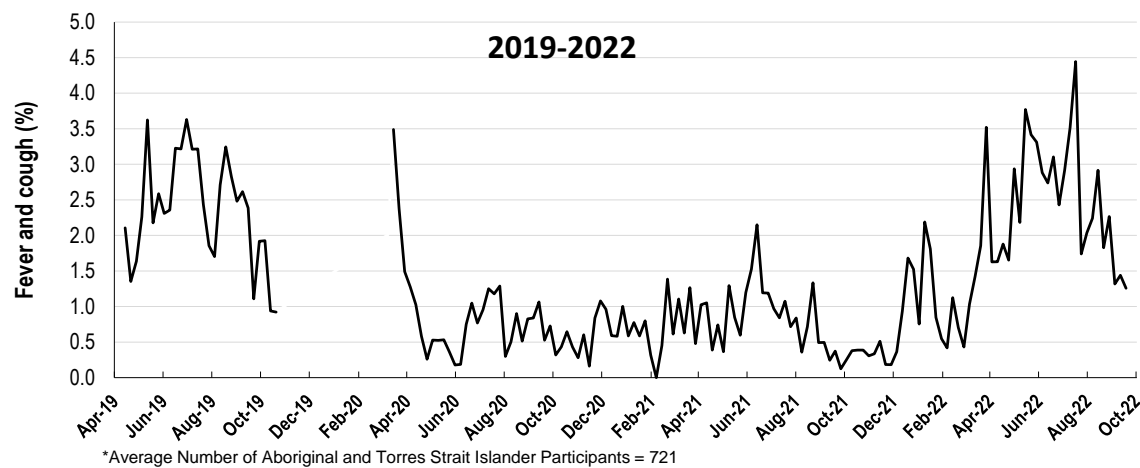
*Respiratory illness activity is defined as fever & cough for this report

1.5% this week: respiratory illness activity is low



Respiratory illness activity among Aboriginal and Torres Strait Islander participants

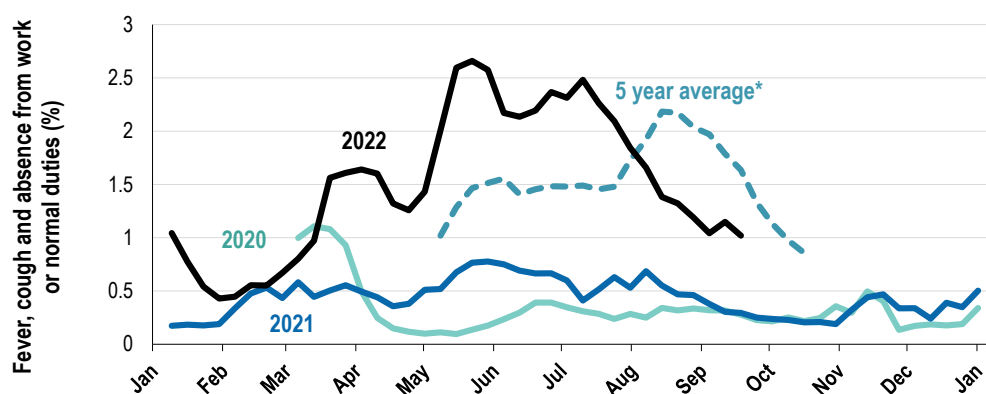
1.3% this week: respiratory illness activity is low



Respiratory illness severity: 37.8% of participants with fever and cough sought medical advice this week		
Respiratory illness Severity	Week ending 18 September 2022 number (%)	Week ending 11 September 2022 number (%)
Number of participants	57676 (100%)	58717 (100%)
Fever & cough	545 (0.9%)	529 (0.9%)
Fever, cough & time-off normal duties	362 (0.6%)	386 (0.7%)
Fever, cough & 3 or more days off work/normal duties	218 (0.4%)	217 (0.4%)
Number of participants with fever and cough	545 (100%)	529 (100%)
*Sought medical advice for fever and cough	206 (37.8%)	221 (41.8%)
Admitted to hospital	2 (0.4%)	4 (0.8%)
Tested for influenza	68 (12.5%)	80 (15.1%)
Tested, result positive for influenza	7 (1.3%)	5 (0.9%)
Tested for COVID-19 by PCR	120 (22%)	146 (27.6%)
Tested for COVID-19 by PCR, result positive	29 (5.3%)	28 (5.3%)
Tested for COVID-19 by RAT	409 (75%)	418 (79%)
Tested for COVID-19 by RAT, result positive	79 (14.5%)	90 (17%)

*Includes those who sought medical advice from a general practitioner, COVID-19 clinic, emergency department, or were admitted to hospital for fever & cough

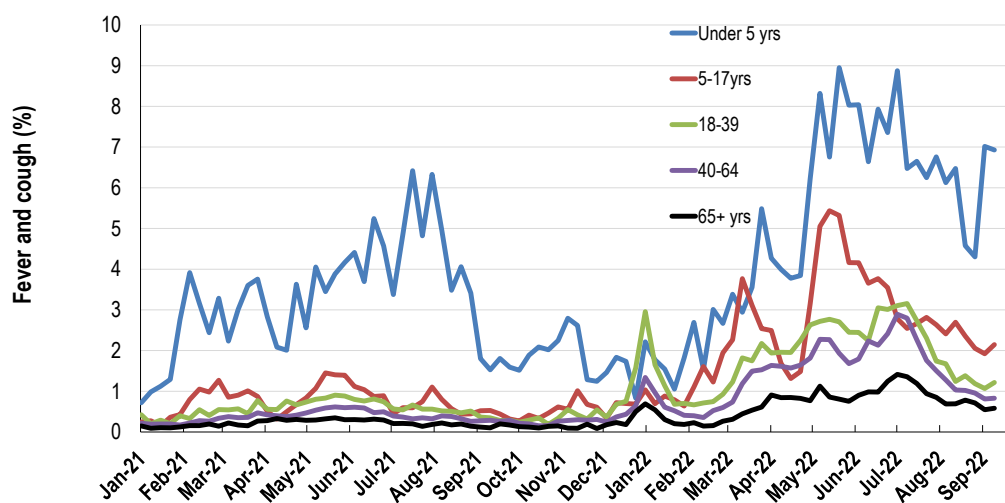
Fever, cough and absence from work or normal duties (Australia):



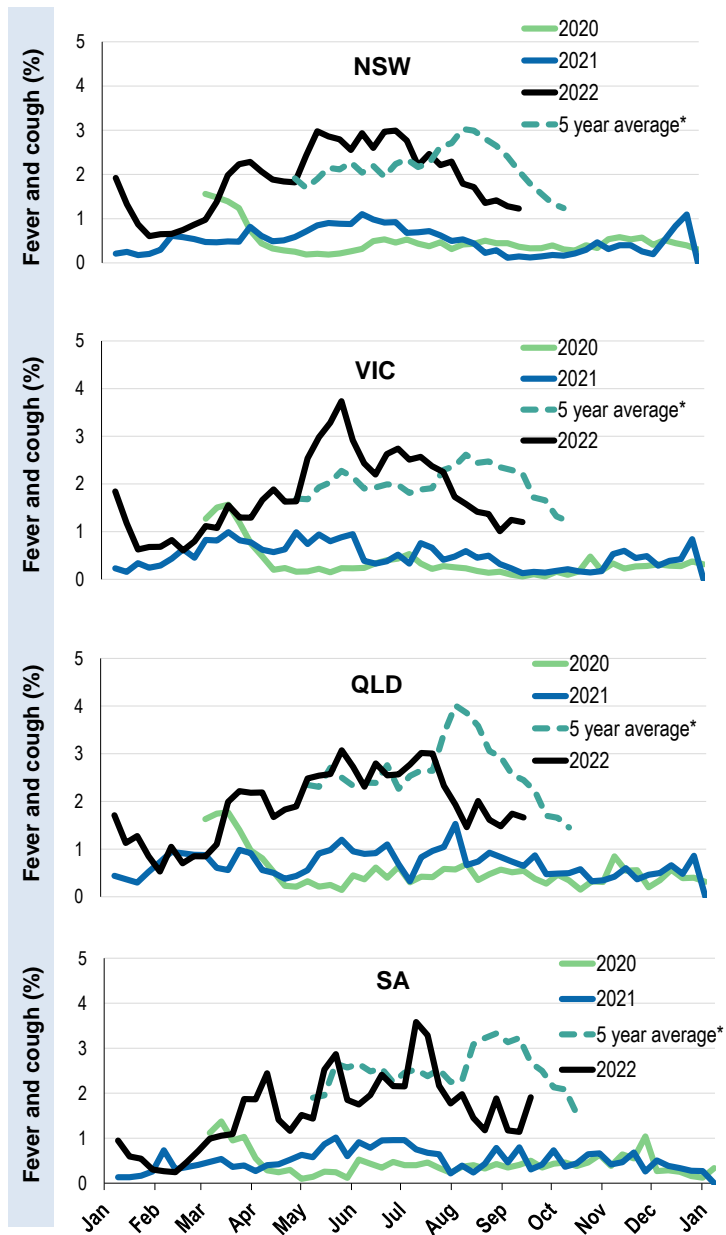
*5 year average is calculated using 2015, 2016, 2017, 2018 and 2019 data

^ Data are age standardised in this graph

Respiratory illness activity by age group in 2021 and 2022 (Australia):

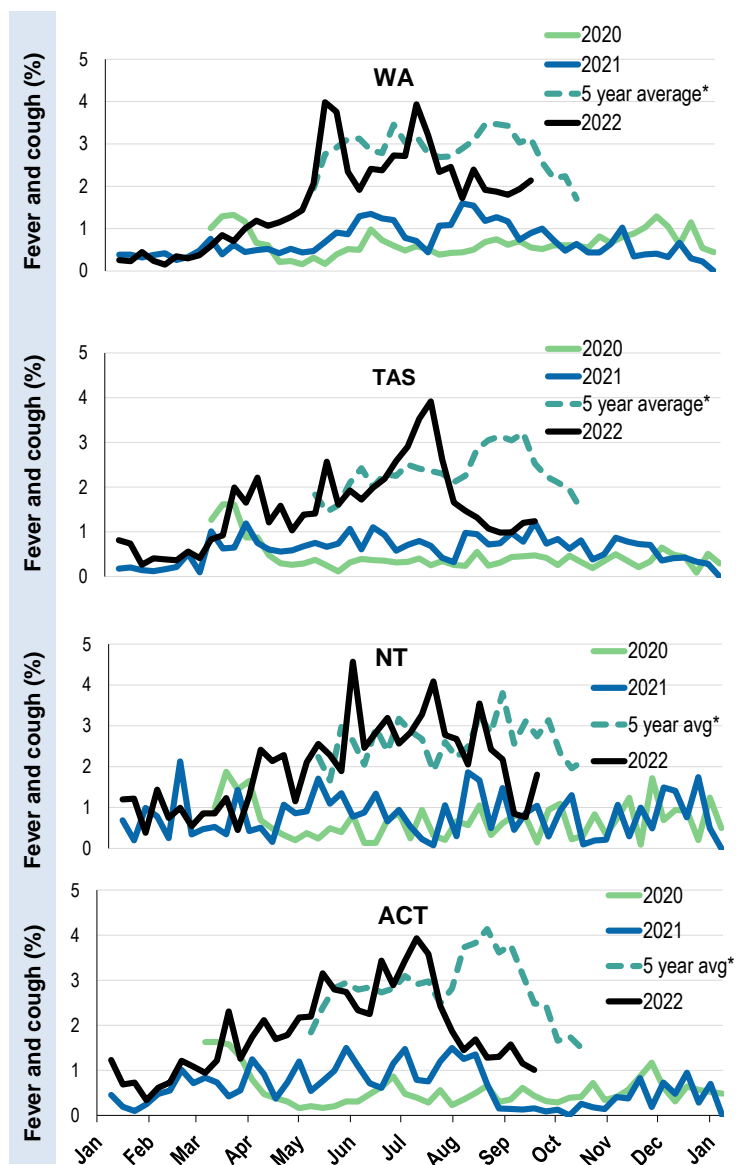


Respiratory illness activity by state/territory (age standardised):



*5 year average is calculated using 2015, 2016, 2017, 2018 and 2019 data

Respiratory illness activity by state/territory (age standardised):



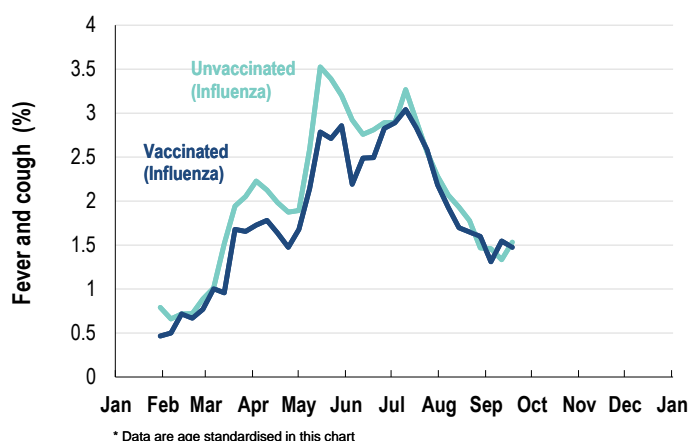
*5 year average is calculated using 2015, 2016, 2017, 2018 and 2019 data

Participation:
Week participants (Week last week)

State	Participants	% Rate/100,000 population
NSW	20452	35.5% 249.8
VIC	11221	19.5% 168.9
QLD	7014	12.2% 133.8
SA	5091	8.8% 287.2
WA	5783	10.0% 215.4
TAS	3791	6.6% 701.0
NT	908	1.6% 369.3
ACT	3416	5.9% 793.5
AUS	57676	100.0% 224.0

Vaccination rates:

Vaccinated participants:	COVID-19 vaccine				Influenza (%)
	At least 1 dose (%)	At least 2 doses (%)	3 doses (%)	4 doses (%)	
<5 years					47.2
5-11 years	86.8	81.0	1.2	0.0	42.9
12-17 years	98.1	97.1	24.9	0.8	33.0
18-64 years	99.3	99.2	94.5	47.4	67.5
65+ years	99.5	99.4	98.2	90.3	82.9
Working with patients	99.5	99.4	97.5	57.3	79.7
Aboriginal and/or Torres Strait Islander	93.4	92.8	74.3	39.7	62.3
Vaccinated overall (%)	97.8	97.5	89.0	59.9	71.0

Respiratory illness activity by self-reported influenza vaccination status, 2022 (Australia):

Respiratory illness activity by self-reported COVID-19 vaccination status, 2022 (Australia):
