

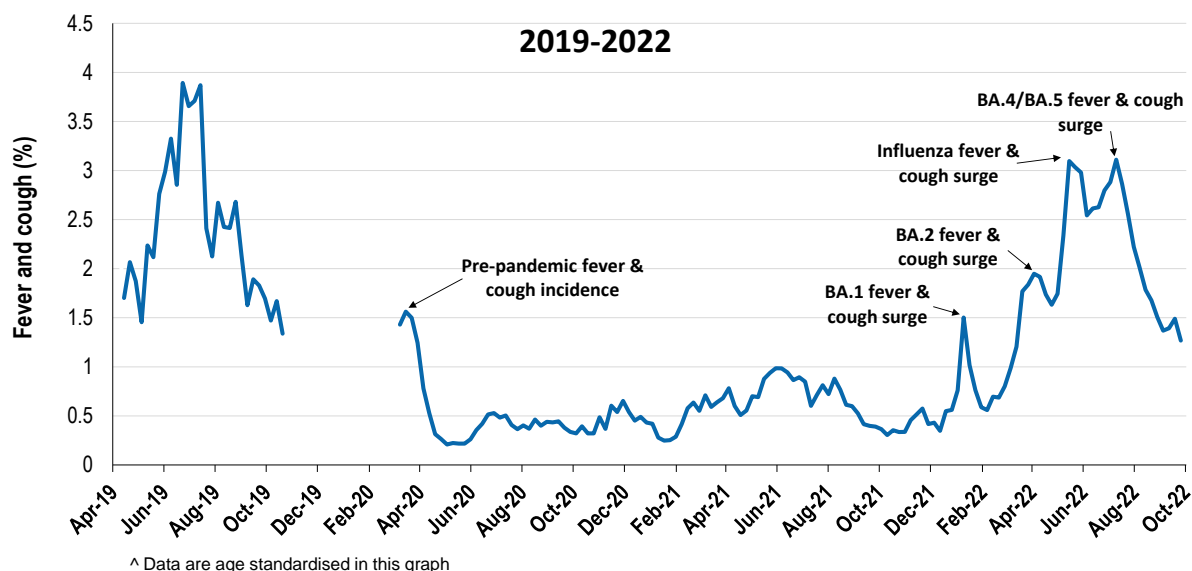
Respiratory illness levels are low and decreasing

58,547 participants this week

Respiratory illness activity*:

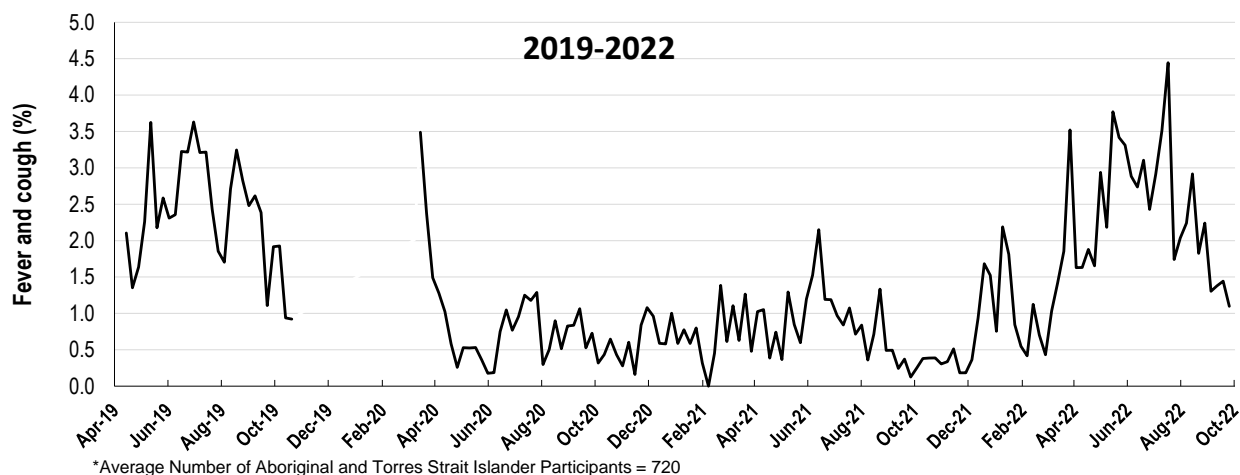
*Respiratory illness activity is defined as fever & cough for this report

1.3% this week: respiratory illness activity is low



Respiratory illness activity among Aboriginal and Torres Strait Islander participants

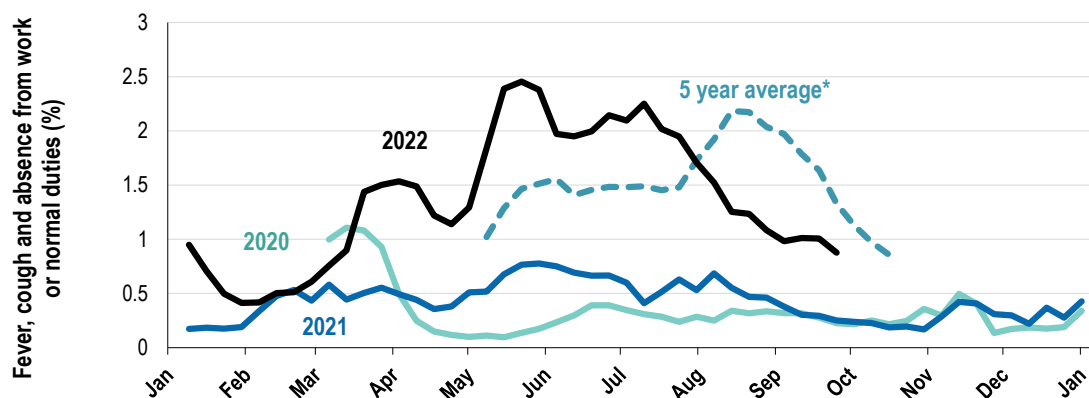
1.1% this week: respiratory illness activity is low



Respiratory illness severity: <i>32.9% of participants with fever and cough sought medical advice this week</i>		
Respiratory illness Severity	Week ending 25 September 2022	Week ending 18 September 2022
	number (%)	number (%)
Number of participants	58547 (100%)	58735 (100%)
Fever & cough	517 (0.9%)	558 (1%)
Fever, cough & time-off normal duties	326 (0.6%)	363 (0.6%)
Fever, cough & 3 or more days off work/normal duties	177 (0.3%)	216 (0.4%)
Number of participants with fever and cough	517 (100%)	558 (100%)
*Sought medical advice for fever and cough	170 (32.9%)	236 (42.3%)
Admitted to hospital	6 (1.2%)	4 (0.7%)
Tested for influenza	54 (10.4%)	78 (14%)
Tested, result positive for influenza	2 (0.4%)	9 (1.6%)
Tested for COVID-19 by PCR	97 (18.8%)	135 (24.2%)
Tested for COVID-19 by PCR, result positive	28 (5.4%)	31 (5.6%)
Tested for COVID-19 by RAT	381 (73.7%)	432 (77.4%)
Tested for COVID-19 by RAT, result positive	90 (17.4%)	86 (15.4%)

*Includes those who sought medical advice from a general practitioner, COVID-19 clinic, emergency department, or were admitted to hospital for fever & cough

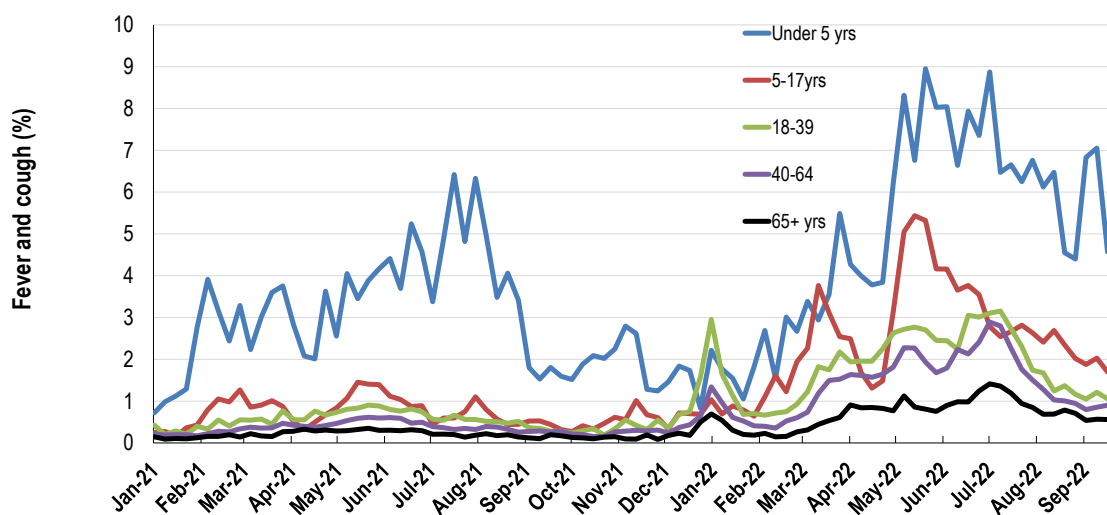
Fever, cough and absence from work or normal duties (Australia):



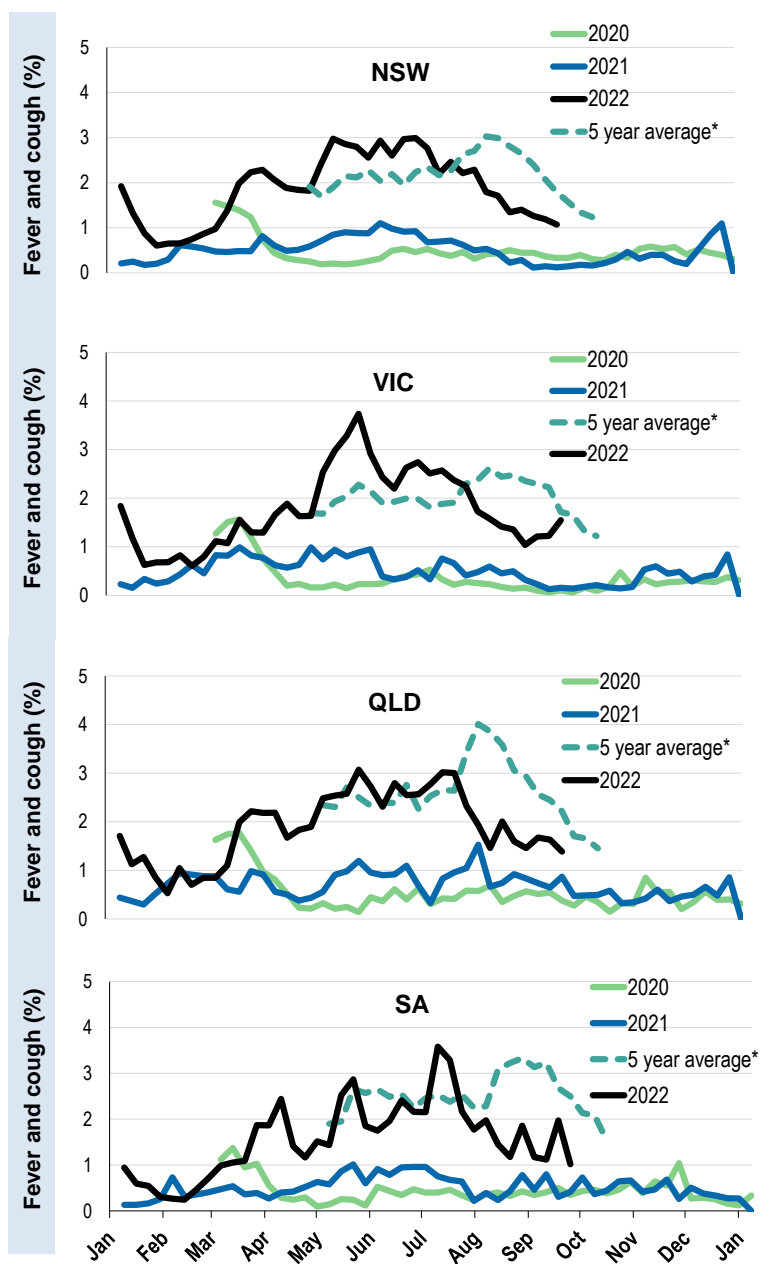
*5 year average is calculated using 2015, 2016, 2017, 2018 and 2019 data

^ Data are age standardised in this graph

Respiratory illness activity by age group in 2021 and 2022 (Australia):

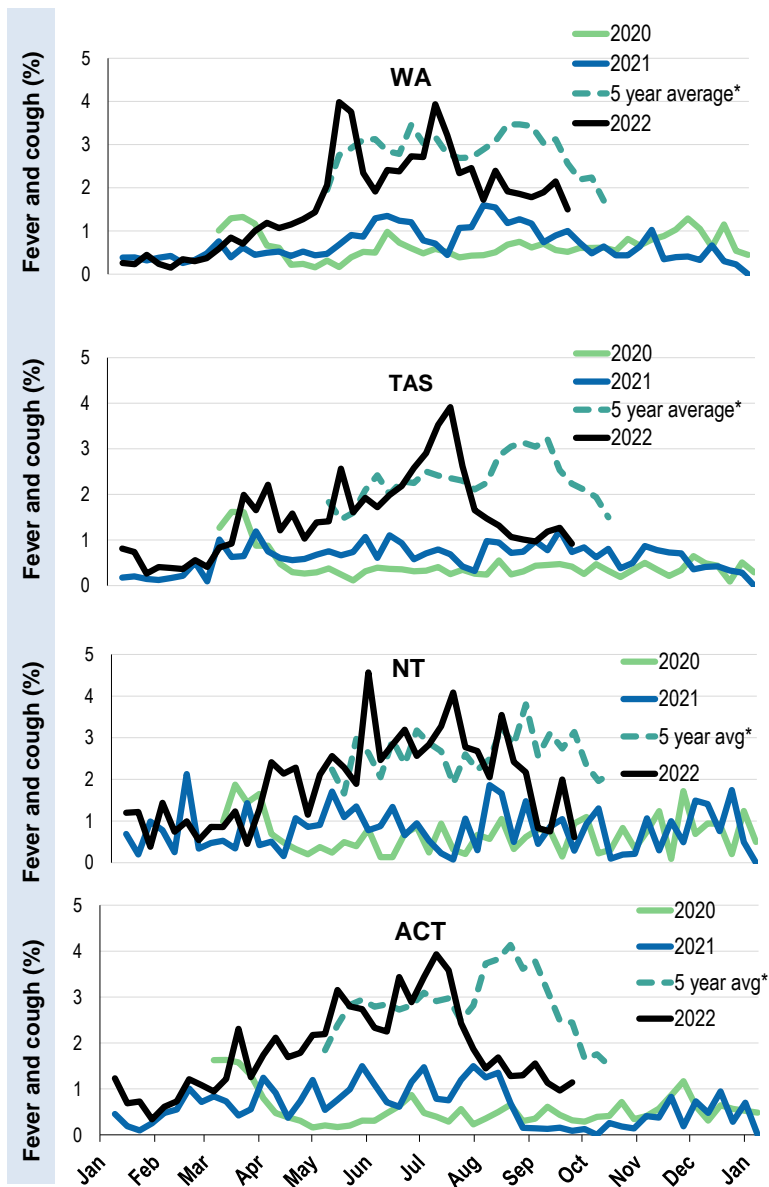


Respiratory illness activity by state/territory (age standardised):



*5 year average is calculated using 2015, 2016, 2017, 2018 and 2019 data

Respiratory illness activity by state/territory (age standardised):



*5 year average is calculated using 2015, 2016, 2017, 2018 and 2019 data

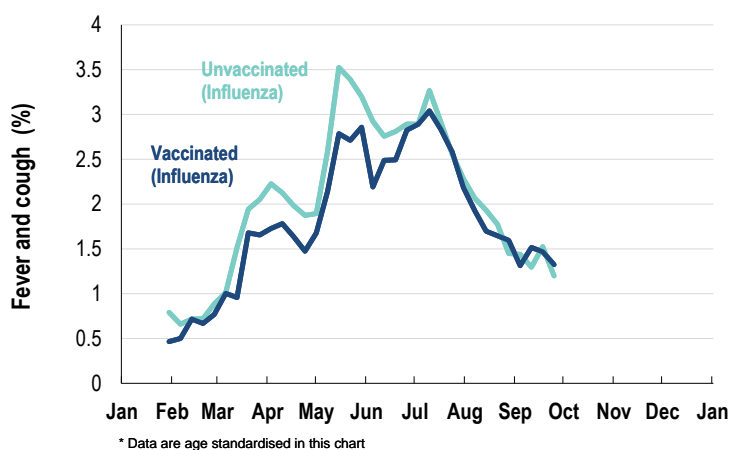
Participation:

Week participants (Week last week)

State	Participants	% Rate/100,000 population
NSW	20614	35.2% 251.8
VIC	11601	19.8% 174.6
QLD	7154	12.2% 136.5
SA	5298	9.0% 298.8
WA	5612	9.6% 209.0
TAS	3881	6.6% 717.6
NT	936	1.6% 380.6
ACT	3451	5.9% 801.6
AUS	58547	100.0% 227.4

Vaccination rates:

Vaccinated participants:	COVID-19 vaccine				Influenza (%)
	At least 1 dose (%)	At least 2 doses (%)	3 doses (%)	4 doses (%)	
<5 years					47.2
5-11 years	87.2	81.3	1.4	0.0	42.6
12-17 years	97.7	96.7	25.1	0.7	33.1
18-64 years	99.3	99.2	94.6	48.4	67.8
65+ years	99.5	99.4	98.2	90.4	82.9
Working with patients	99.5	99.4	97.5	57.9	79.6
Aboriginal and/or Torres Strait Islander	93.4	92.0	74.8	40.0	62.9
Vaccinated overall (%)	97.8	97.5	89.4	60.9	71.3

Respiratory illness activity by self-reported influenza vaccination status, 2022 (Australia):

Respiratory illness activity by self-reported COVID-19 vaccination status, 2022 (Australia):
