

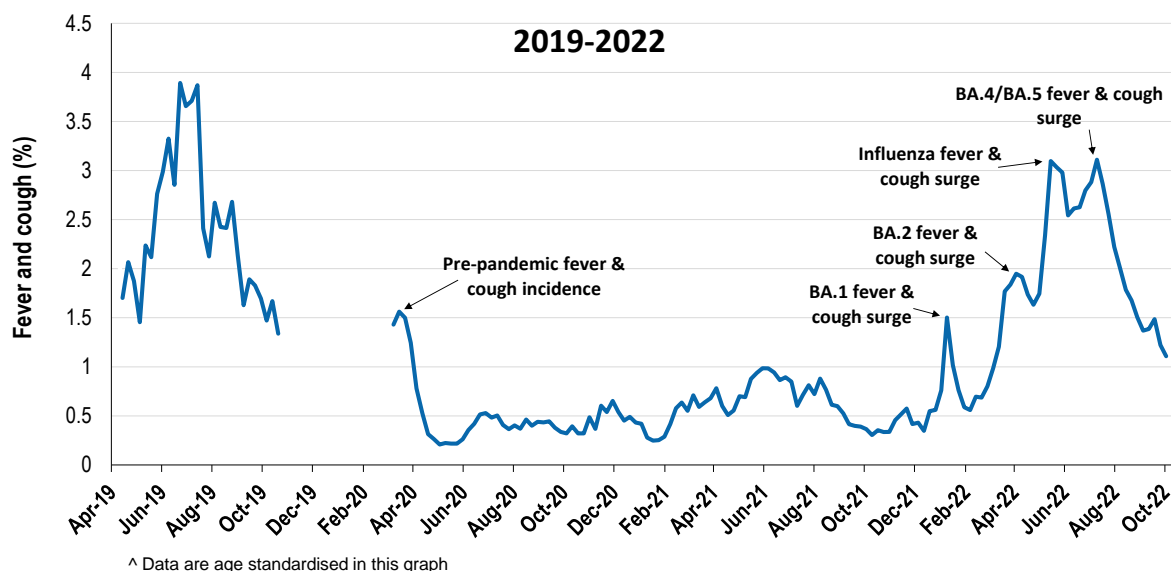
## Respiratory illness levels are low and decreasing

**56,888 participants this week**

### Respiratory illness activity\*:

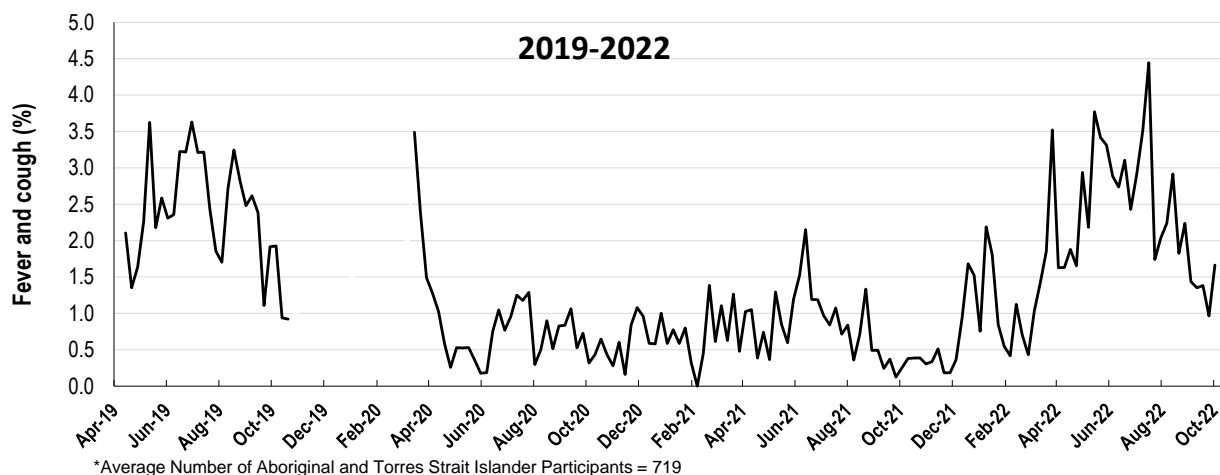
\*Respiratory illness activity is defined as fever & cough for this report

**1.1% this week: respiratory illness activity is low**



### Respiratory illness activity among Aboriginal and Torres Strait Islander participants

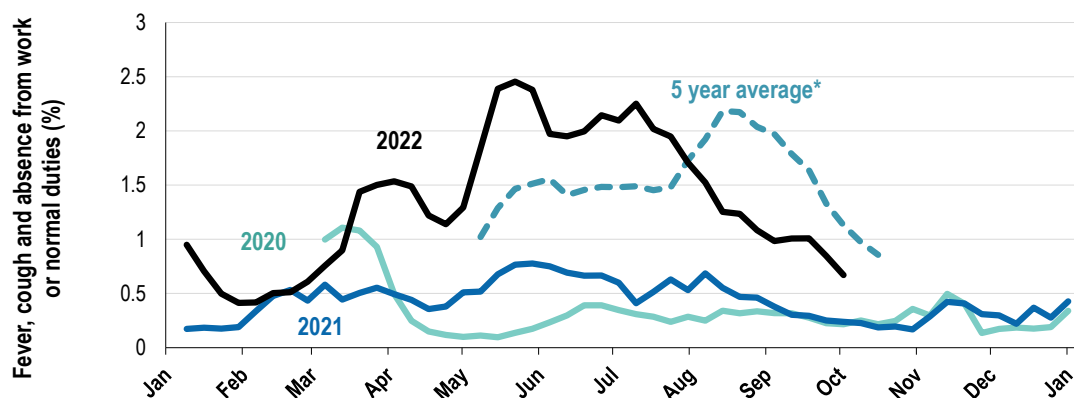
**1.7% this week: respiratory illness activity is low**



Respiratory illness severity: 31.4% of participants with fever and cough sought medical advice this week		
Respiratory illness Severity	Week ending 02 October 2022	Week ending 25 September 2022
	number (%)	number (%)
<b>Number of participants</b>	56888 (100%)	58212 (100%)
Fever & cough	472 (0.8%)	514 (0.9%)
Fever, cough & time-off normal duties	277 (0.5%)	319 (0.5%)
Fever, cough & 3 or more days off work/normal duties	181 (0.3%)	173 (0.3%)
<b>Number of participants with fever and cough</b>	472 (100%)	514 (100%)
*Sought medical advice for fever and cough	148 (31.4%)	197 (38.3%)
Admitted to hospital	5 (1.1%)	8 (1.6%)
Tested for influenza	32 (6.8%)	70 (13.6%)
Tested, result positive for influenza	3 (0.6%)	2 (0.4%)
Tested for COVID-19 by PCR	72 (15.3%)	116 (22.6%)
Tested for COVID-19 by PCR, result positive	21 (4.4%)	29 (5.6%)
Tested for COVID-19 by RAT	355 (75.2%)	392 (76.3%)
Tested for COVID-19 by RAT, result positive	79 (16.7%)	94 (18.3%)

\*Includes those who sought medical advice from a general practitioner, COVID-19 clinic, emergency department, or were admitted to hospital for fever & cough

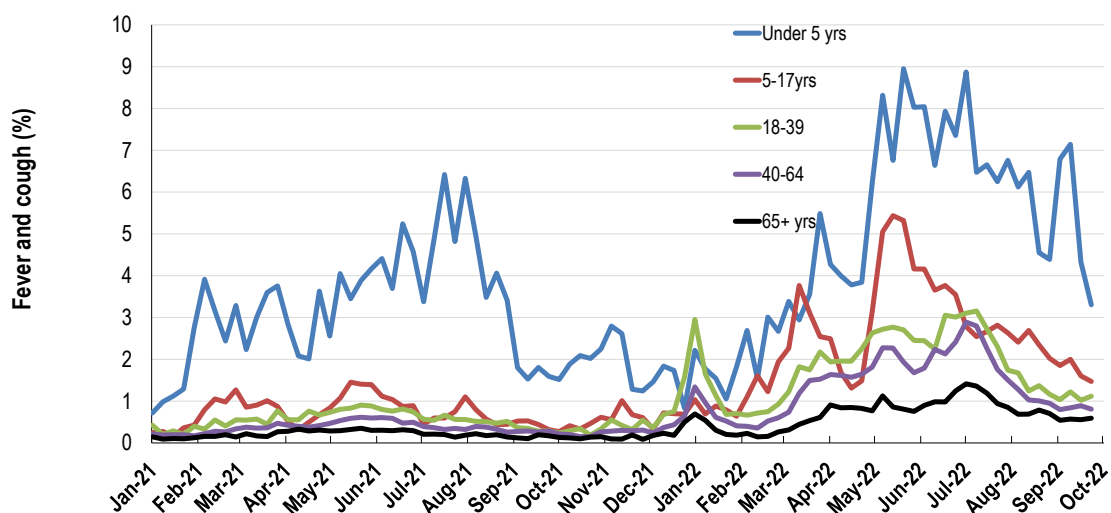
**Fever, cough and absence from work or normal duties (Australia):**



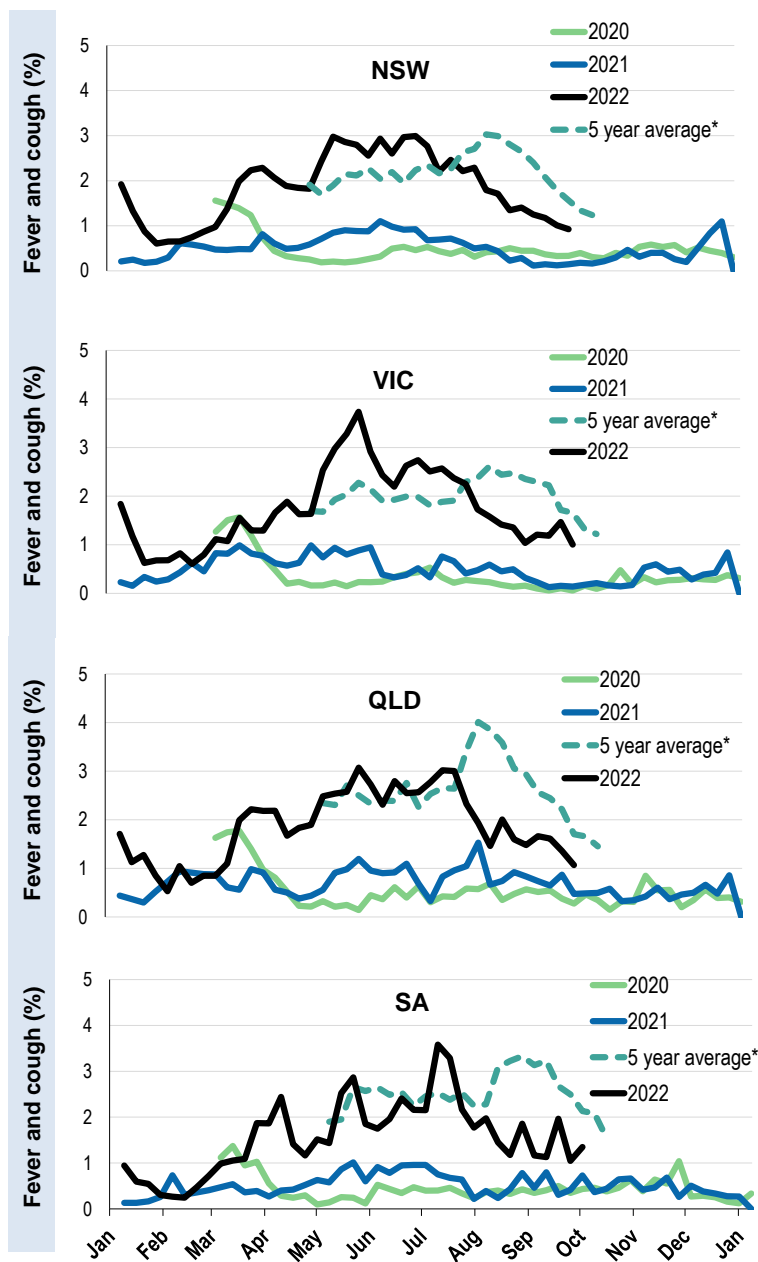
\*5 year average is calculated using 2015, 2016, 2017, 2018 and 2019 data

^ Data are age standardised in this graph

**Respiratory illness activity by age group in 2021 and 2022 (Australia):**

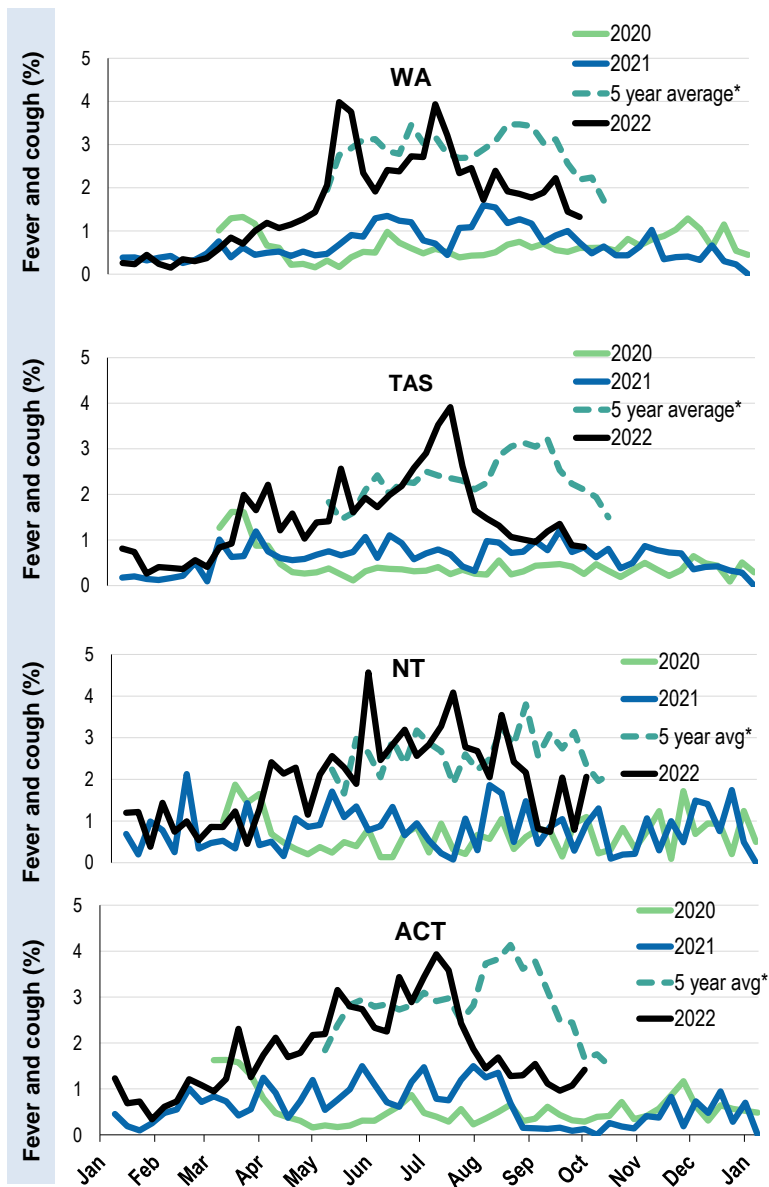


Respiratory illness activity by state/territory (age standardised):



\*5 year average is calculated using 2015, 2016, 2017, 2018 and 2019 data

Respiratory illness activity by state/territory (age standardised):



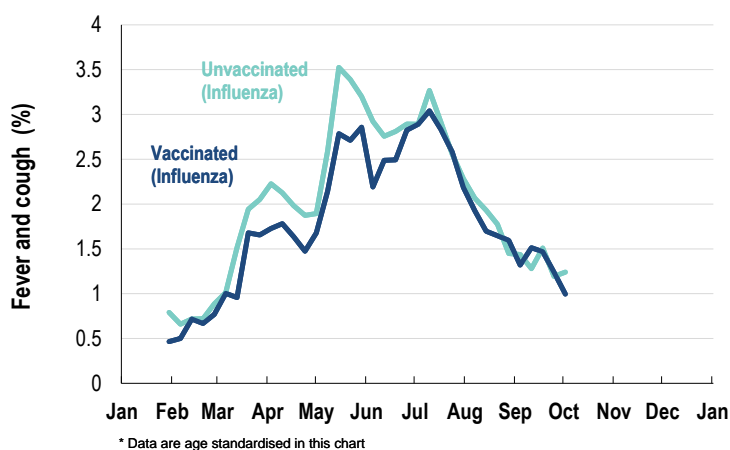
\*5 year average is calculated using 2015, 2016, 2017, 2018 and 2019 data

**Participation:**
**Week participants (Week last week)**

State	Participants	% Rate/100,000 population
NSW	19641	34.5% <b>239.9</b>
VIC	11621	20.4% <b>174.9</b>
QLD	7073	12.4% <b>135.0</b>
SA	4971	8.7% <b>280.4</b>
WA	5636	9.9% <b>209.9</b>
TAS	3686	6.5% <b>681.6</b>
NT	901	1.6% <b>366.4</b>
ACT	3359	5.9% <b>780.3</b>
AUS	56888	100.0% <b>220.9</b>

**Vaccination rates:**

Vaccinated participants:	COVID-19 vaccine				Influenza (%)
	At least 1 dose (%)	At least 2 doses (%)	3 doses (%)	4 doses (%)	
<5 years					48.1
5-11 years	85.9	80.8	1.4	0.0	43.1
12-17 years	97.7	96.7	23.7	0.7	34.5
18-64 years	99.3	99.2	94.8	49.5	68.0
65+ years	99.5	99.4	98.3	90.8	82.8
Working with patients	99.6	99.5	97.7	59.3	80.0
Aboriginal and/or Torres Strait Islander	93.0	91.9	73.8	40.9	61.0
<b>Vaccinated overall (%)</b>	<b>97.9</b>	<b>97.6</b>	<b>89.7</b>	<b>62.1</b>	<b>71.7</b>

**Respiratory illness activity by self-reported influenza vaccination status, 2022 (Australia):**

**Respiratory illness activity by self-reported COVID-19 vaccination status, 2022 (Australia):**
