

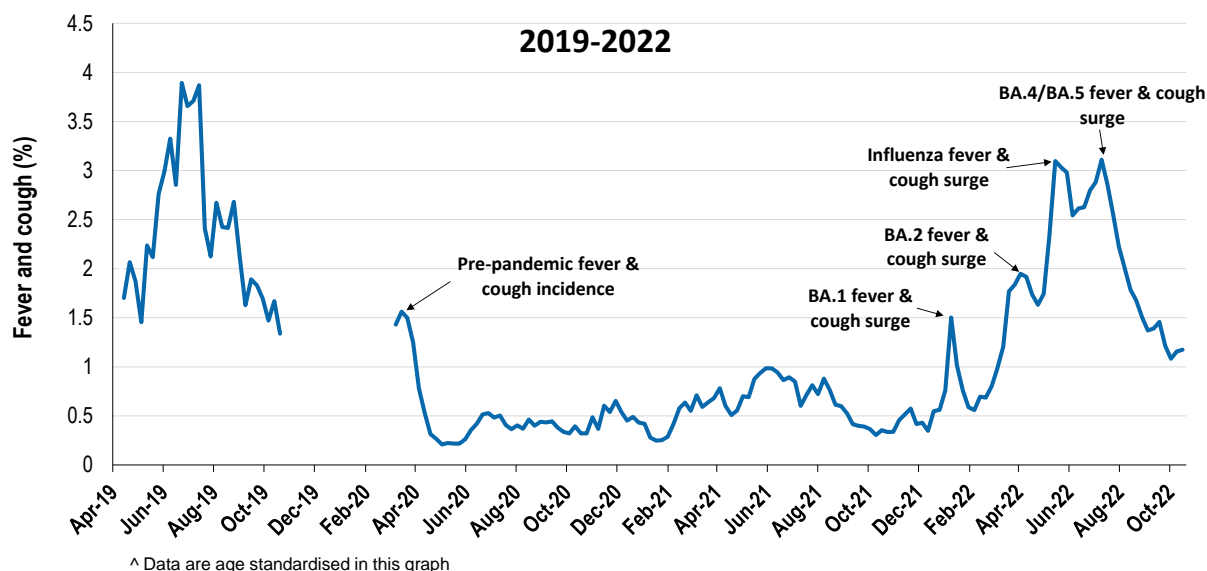
Respiratory illness levels are low and increasing in school aged children

58,266 participants this week

Respiratory illness activity*:

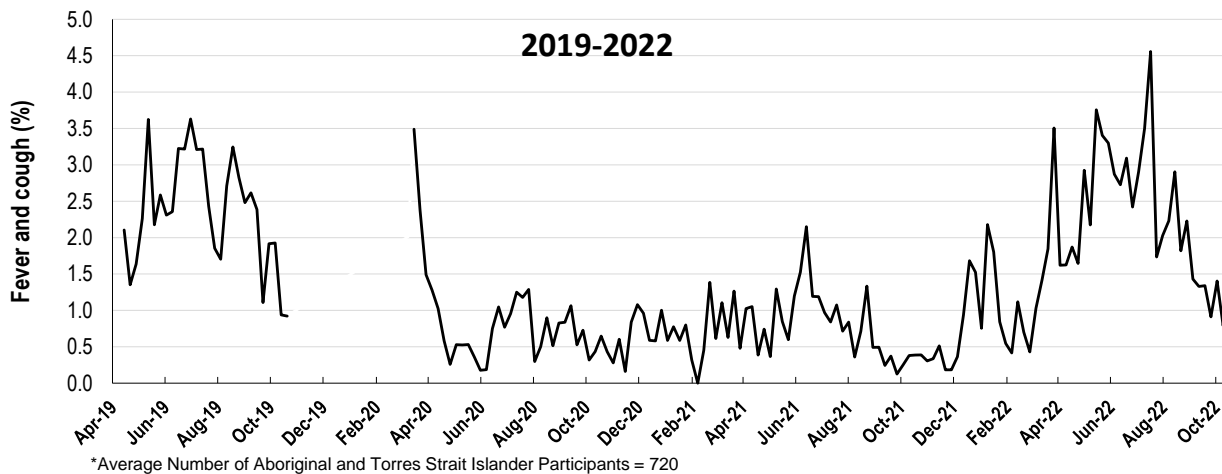
*Respiratory illness activity is defined as fever & cough for this report

1.2% this week: respiratory illness activity is low



Respiratory illness activity among Aboriginal and Torres Strait Islander participants

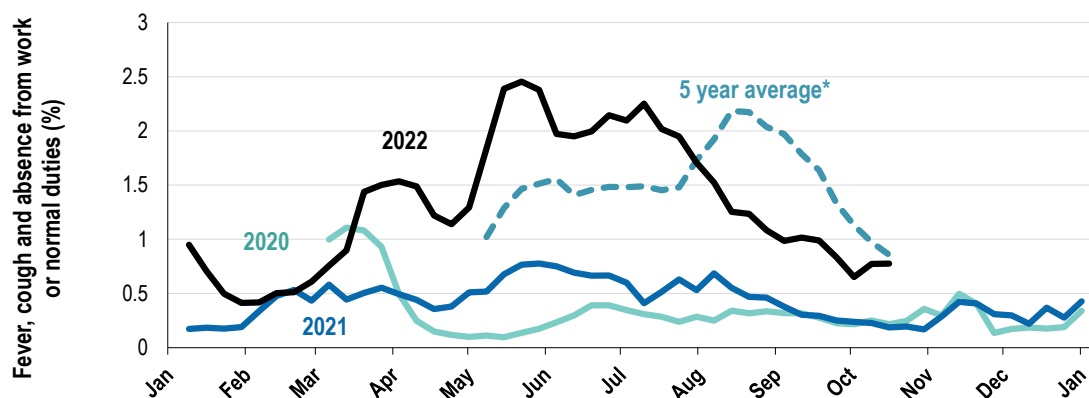
1.4% this week: respiratory illness activity is low



Respiratory illness severity: <i>34.8% of participants with fever and cough sought medical advice this week</i>		
Respiratory illness Severity	Week ending 16 October 2022	Week ending 09 October 2022
	number (%)	number (%)
Number of participants	58266 (100%)	58191 (100%)
Fever & cough	489 (0.8%)	484 (0.8%)
Fever, cough & time-off normal duties	312 (0.5%)	303 (0.5%)
Fever, cough & 3 or more days off work/normal duties	201 (0.3%)	185 (0.3%)
Number of participants with fever and cough	489 (100%)	484 (100%)
*Sought medical advice for fever and cough	170 (34.8%)	176 (36.4%)
Admitted to hospital	6 (1.2%)	6 (1.2%)
Tested for influenza	45 (9.2%)	39 (8.1%)
Tested, result positive for influenza	3 (0.6%)	3 (0.6%)
Tested for COVID-19 by PCR	82 (16.8%)	90 (18.6%)
Tested for COVID-19 by PCR, result positive	19 (3.9%)	23 (4.8%)
Tested for COVID-19 by RAT	371 (75.9%)	358 (74%)
Tested for COVID-19 by RAT, result positive	83 (17%)	81 (16.7%)

*Includes those who sought medical advice from a general practitioner, COVID-19 clinic, emergency department, or were admitted to hospital for fever & cough

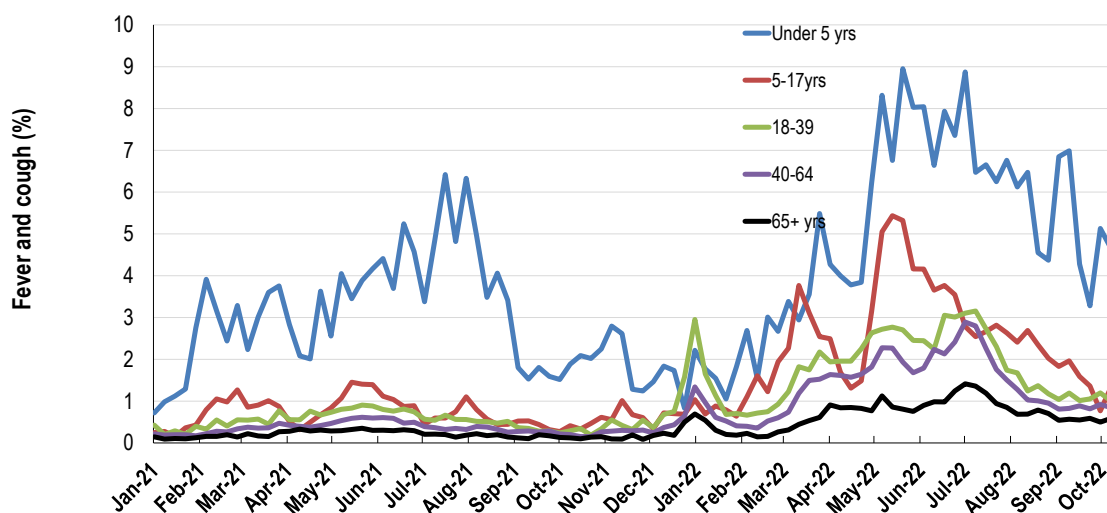
Fever, cough and absence from work or normal duties (Australia):



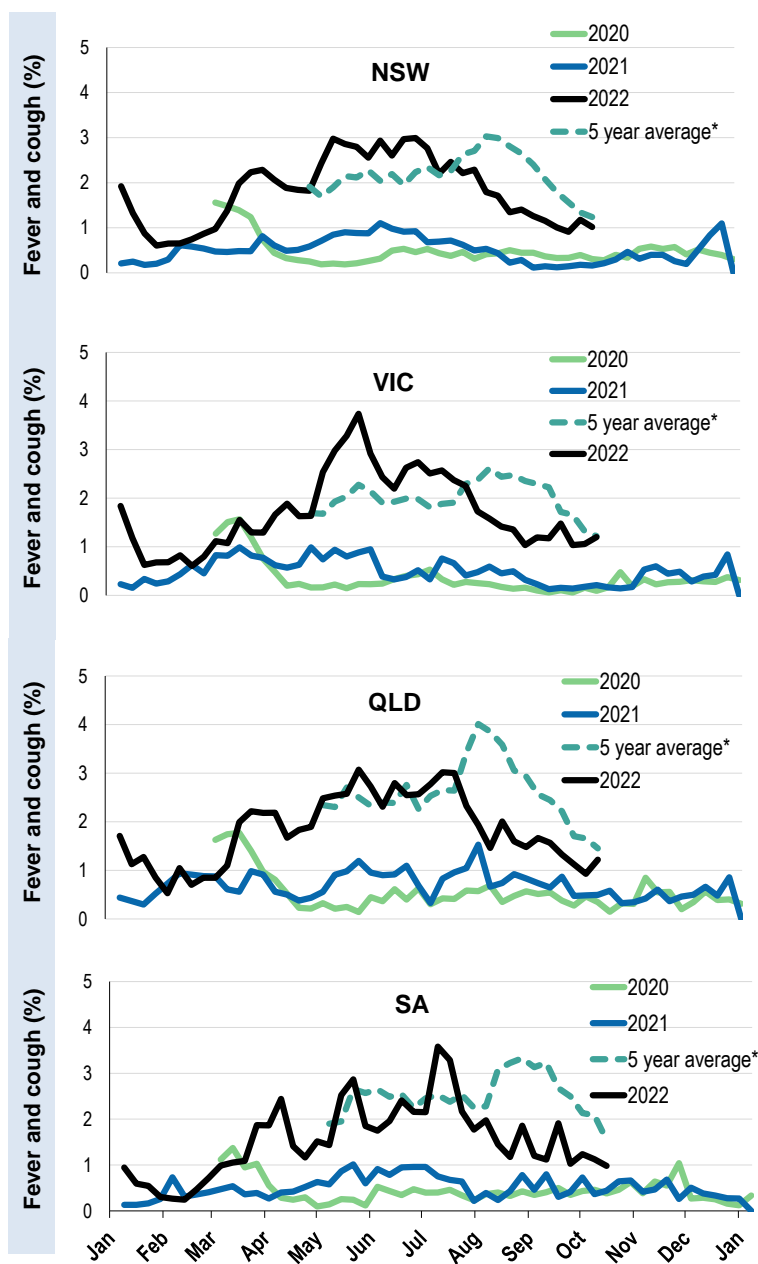
*5 year average is calculated using 2015, 2016, 2017, 2018 and 2019 data

^ Data are age standardised in this graph

Respiratory illness activity by age group in 2021 and 2022 (Australia):

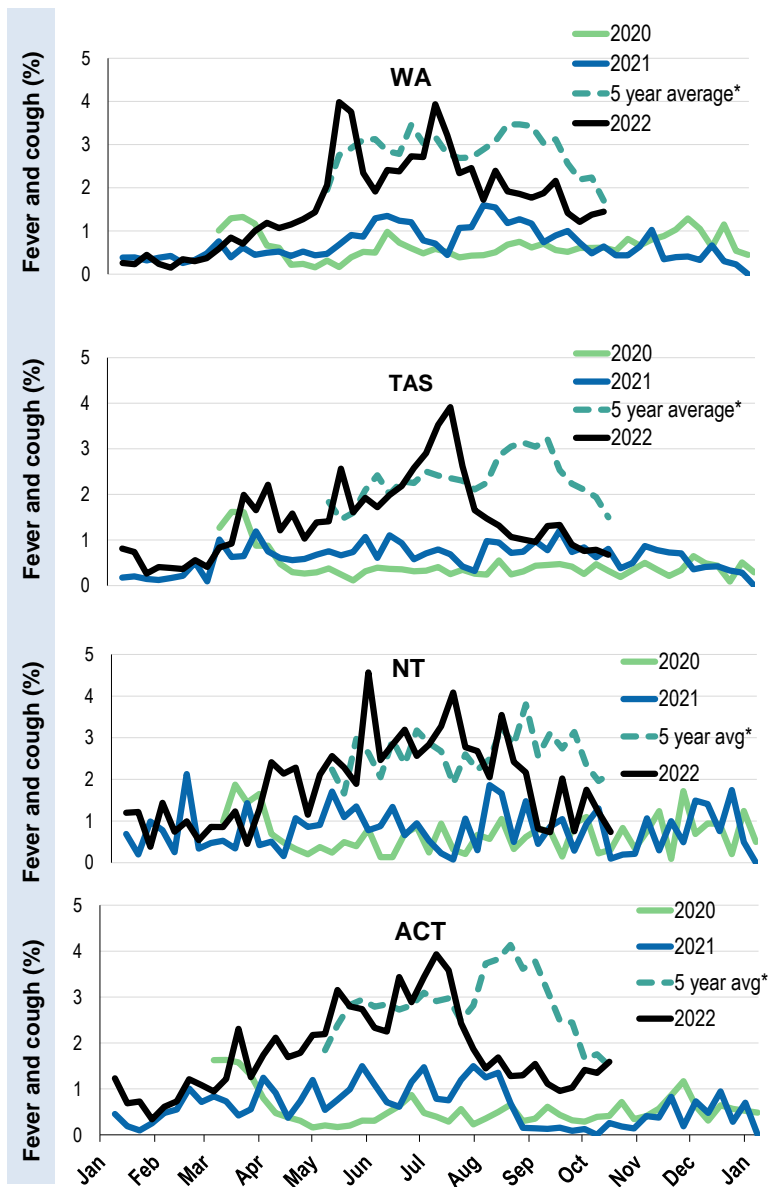


Respiratory illness activity by state/territory (age standardised):



*5 year average is calculated using 2015, 2016, 2017, 2018 and 2019 data

Respiratory illness activity by state/territory (age standardised):



*5 year average is calculated using 2015, 2016, 2017, 2018 and 2019 data

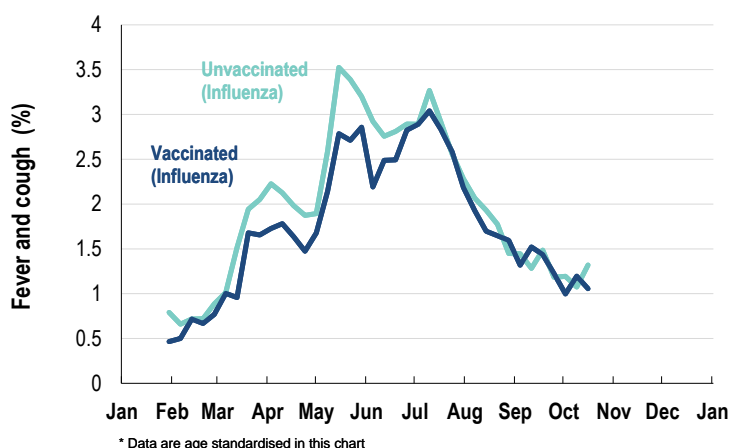
Participation:

Week participants (Week last week)

State	Participants	% Rate/100,000 population
NSW	20615	35.4% 251.8
VIC	11455	19.7% 172.4
QLD	7152	12.3% 136.5
SA	5145	8.8% 290.2
WA	5824	10.0% 216.9
TAS	3705	6.4% 685.1
NT	916	1.6% 372.5
ACT	3454	5.9% 802.3
AUS	58266	100.0% 226.3

Vaccination rates:

Vaccinated participants:	COVID-19 vaccine				Influenza (%)
	At least 1 dose (%)	At least 2 doses (%)	3 doses (%)	4 doses (%)	
<5 years					49.0
5-11 years	87.2	81.6	1.2	0.0	43.4
12-17 years	97.6	96.6	23.5	0.6	33.5
18-64 years	99.3	99.1	94.5	50.1	67.8
65+ years	99.5	99.4	98.2	90.9	82.9
Working with patients	99.6	99.5	97.7	59.5	79.9
Aboriginal and/or Torres Strait Islander	94.0	92.4	74.6	40.7	60.2
Vaccinated overall (%)	97.8	97.5	89.1	61.9	71.4

Respiratory illness activity by self-reported influenza vaccination status, 2022 (Australia):

Respiratory illness activity by self-reported COVID-19 vaccination status, 2022 (Australia):
