

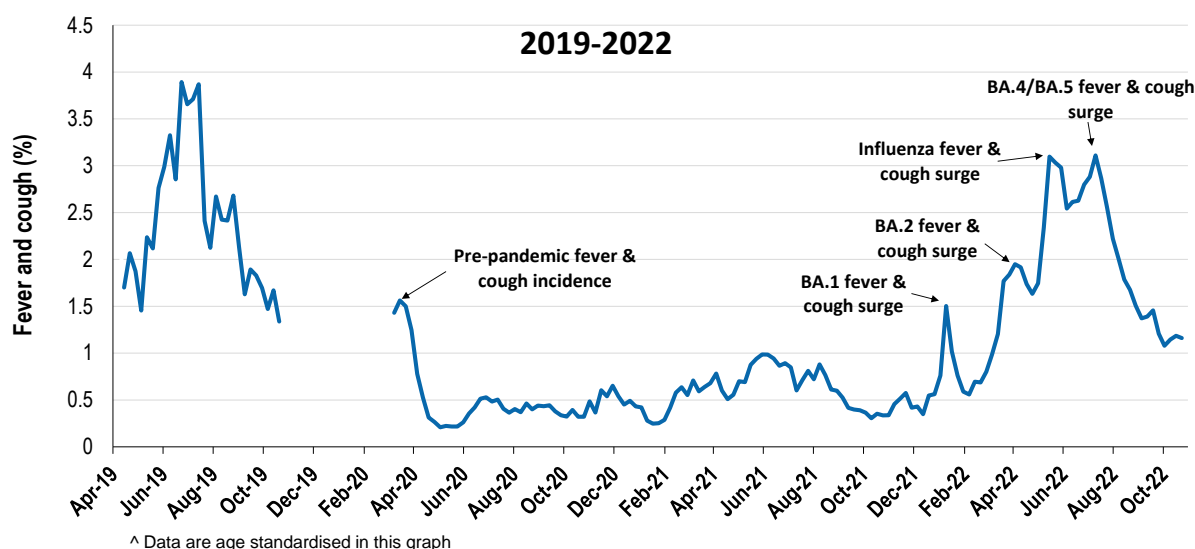
Respiratory illness levels are low and increasing in school aged children

56,706 participants this week

Respiratory illness activity*:

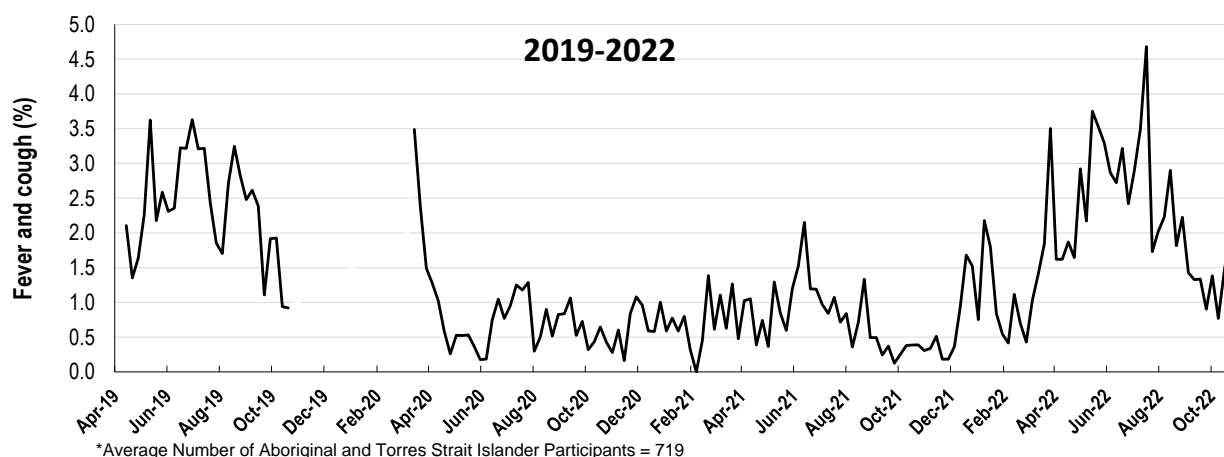
*Respiratory illness activity is defined as fever & cough for this report

1.2% this week: respiratory illness activity is low



Respiratory illness activity among Aboriginal and Torres Strait Islander participants

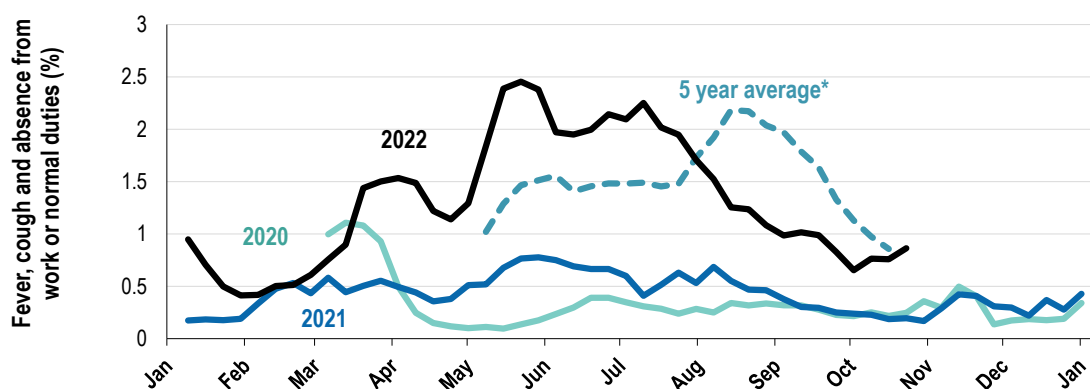
2% this week: respiratory illness activity is low



Respiratory illness severity: 36.4% of participants with fever and cough sought medical advice this week		
Respiratory illness Severity	Week ending 23 October 2022	Week ending 16 October 2022
	number (%)	number (%)
Number of participants	56706 (100%)	58266 (100%)
Fever & cough	478 (0.8%)	489 (0.8%)
Fever, cough & time-off normal duties	327 (0.6%)	308 (0.5%)
Fever, cough & 3 or more days off work/normal duties	198 (0.3%)	200 (0.3%)
Number of participants with fever and cough	478 (100%)	489 (100%)
*Sought medical advice for fever and cough	174 (36.4%)	196 (40.1%)
Admitted to hospital	5 (1%)	7 (1.4%)
Tested for influenza	44 (9.2%)	53 (10.8%)
Tested, result positive for influenza	1 (0.2%)	3 (0.6%)
Tested for COVID-19 by PCR	86 (18%)	93 (19%)
Tested for COVID-19 by PCR, result positive	30 (6.3%)	20 (4.1%)
Tested for COVID-19 by RAT	366 (76.6%)	381 (77.9%)
Tested for COVID-19 by RAT, result positive	122 (25.5%)	88 (18%)

*Includes those who sought medical advice from a general practitioner, COVID-19 clinic, emergency department, or were admitted to hospital for fever & cough

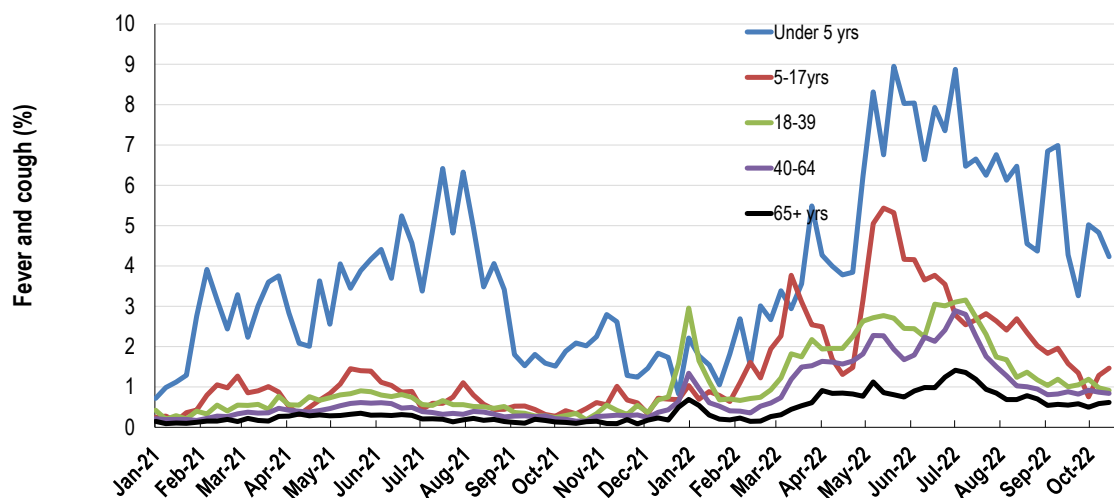
Fever, cough and absence from work or normal duties (Australia):



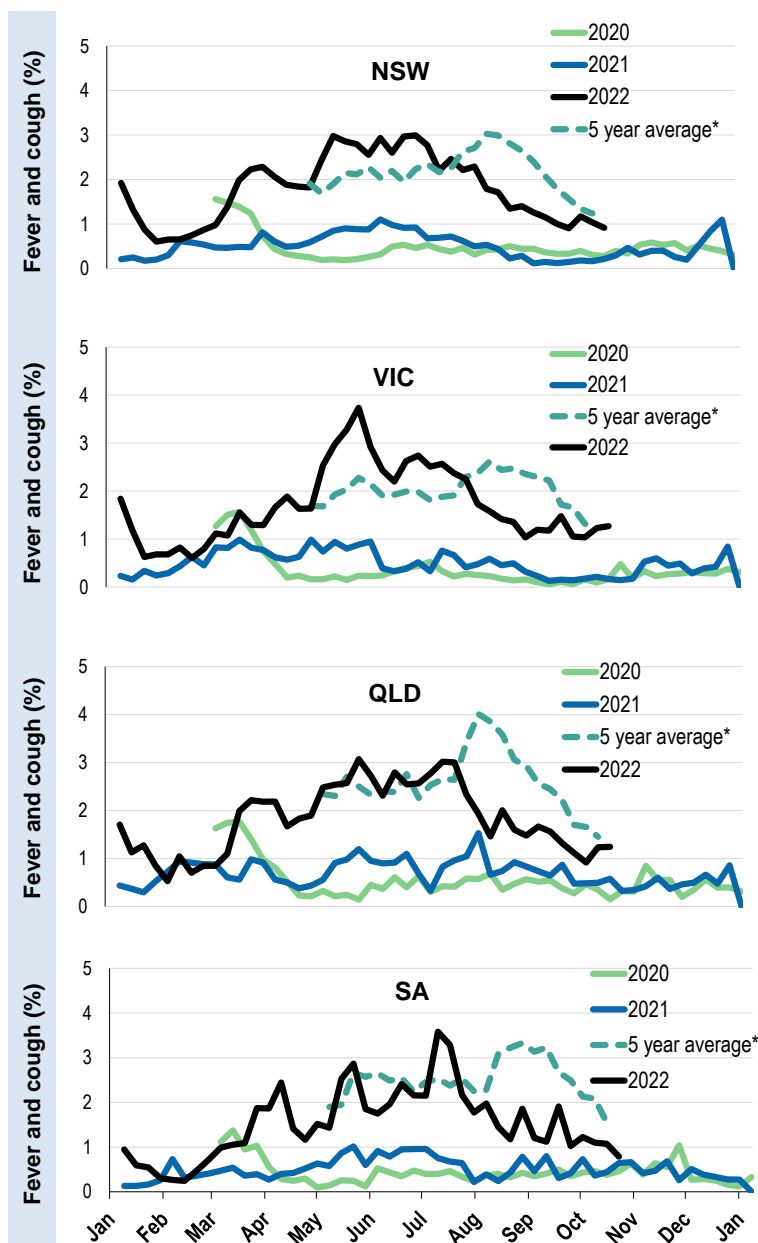
*5 year average is calculated using 2015, 2016, 2017, 2018 and 2019 data

^ Data are age standardised in this graph

Respiratory illness activity by age group in 2021 and 2022 (Australia):

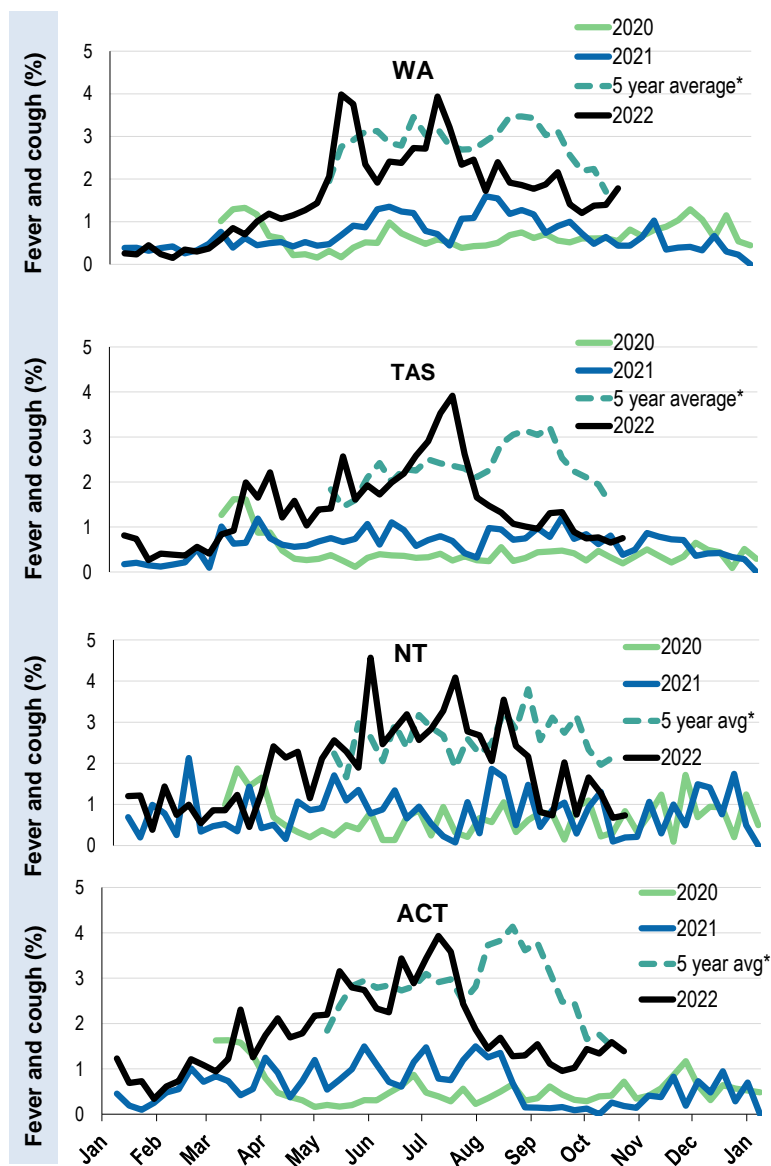


Respiratory illness activity by state/territory (age standardised):



*5 year average is calculated using 2015, 2016, 2017, 2018 and 2019 data

Respiratory illness activity by state/territory (age standardised):



*5 year average is calculated using 2015, 2016, 2017, 2018 and 2019 data

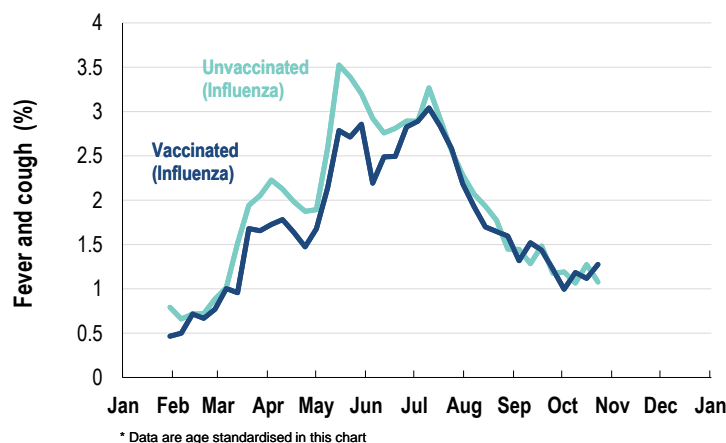
Participation:

Week participants (Week last week)

State	Participants	% Rate/100,000 population
NSW	19996	35.3% 244.2
VIC	11226	19.8% 169.0
QLD	6878	12.1% 131.2
SA	5042	8.9% 284.4
WA	5682	10.0% 211.6
TAS	3696	6.5% 683.4
NT	918	1.6% 373.3
ACT	3268	5.8% 759.1
AUS	56706	100.0% 220.2

Vaccination rates:
Vaccinated participants:

	COVID-19 vaccine				Influenza (%)
	At least 1 dose (%)	At least 2 doses (%)	3 doses (%)	4 doses (%)	
<5 years					48.6
5-11 years	87.0	81.2	1.3	0.0	42.5
12-17 years	97.7	96.4	23.4	0.8	33.0
18-64 years	99.3	99.1	94.6	50.9	68.0
65+ years	99.5	99.4	98.3	91.1	83.2
Working with patients	99.6	99.5	97.7	60.1	80.3
Aboriginal and/or Torres Strait Islander	94.0	92.4	75.2	41.6	60.0
Vaccinated overall (%)	97.9	97.5	89.3	62.5	71.6

Respiratory illness activity by self-reported influenza vaccination status, 2022 (Australia):

Respiratory illness activity by self-reported COVID-19 vaccination status, 2022 (Australia):
