

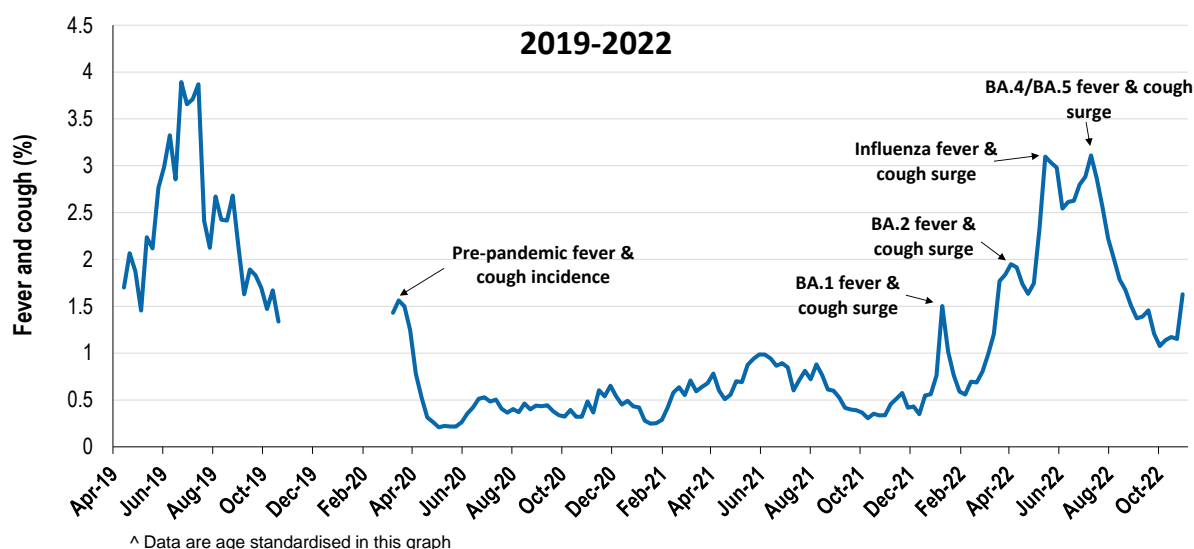
Respiratory illness levels are low and increasing in all age groups

37,007 participants this week

Respiratory illness activity*:

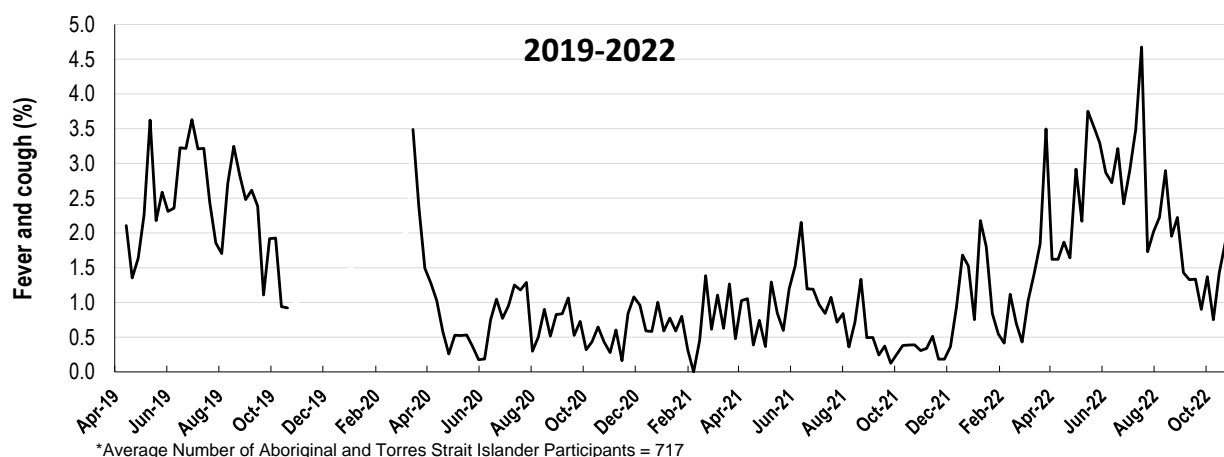
*Respiratory illness activity is defined as fever & cough for this report

1.6% this week: respiratory illness activity is low



Respiratory illness activity among Aboriginal and Torres Strait Islander participants

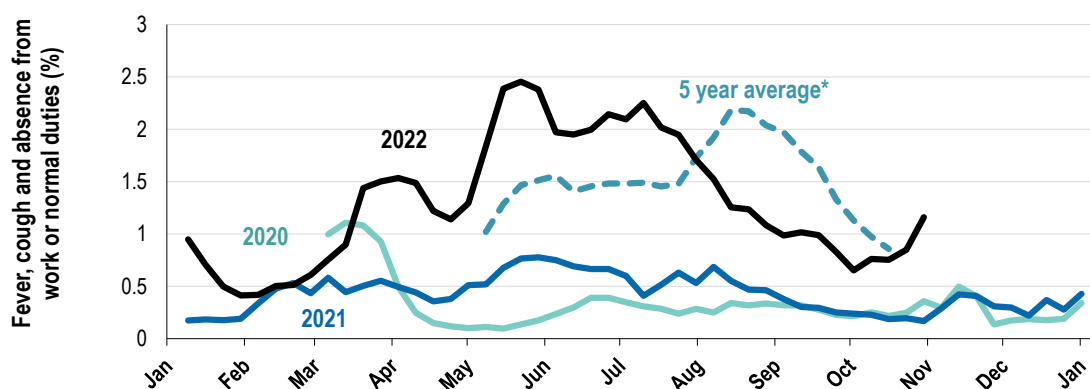
2% this week: respiratory illness activity is low



Respiratory illness severity: 34.3% of participants with fever and cough sought medical advice this week		
Respiratory illness Severity	Week ending 30 October 2022	Week ending 23 October 2022
	number (%)	number (%)
Number of participants	37007 (100%)	56706 (100%)
Fever & cough	402 (1.1%)	478 (0.8%)
Fever, cough & time-off normal duties	278 (0.8%)	322 (0.6%)
Fever, cough & 3 or more days off work/normal duties	162 (0.4%)	194 (0.3%)
Number of participants with fever and cough	402 (100%)	478 (100%)
*Sought medical advice for fever and cough	138 (34.3%)	185 (38.7%)
Admitted to hospital	1 (0.2%)	5 (1%)
Tested for influenza	30 (7.5%)	48 (10%)
Tested, result positive for influenza	2 (0.5%)	1 (0.2%)
Tested for COVID-19 by PCR	64 (15.9%)	91 (19%)
Tested for COVID-19 by PCR, result positive	21 (5.2%)	33 (6.9%)
Tested for COVID-19 by RAT	327 (81.3%)	374 (78.2%)
Tested for COVID-19 by RAT, result positive	119 (29.6%)	132 (27.6%)

*Includes those who sought medical advice from a general practitioner, COVID-19 clinic, emergency department, or were admitted to hospital for fever & cough

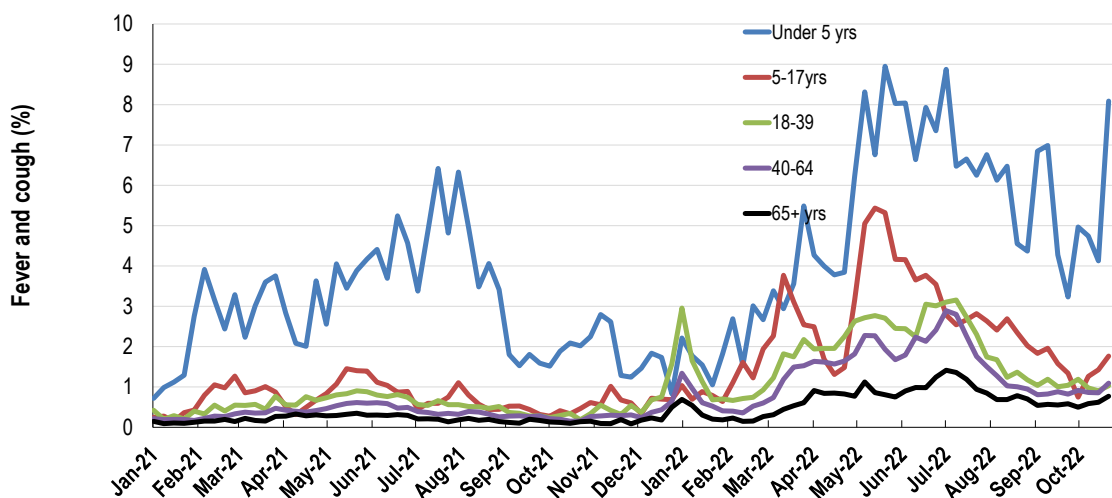
Fever, cough and absence from work or normal duties (Australia):



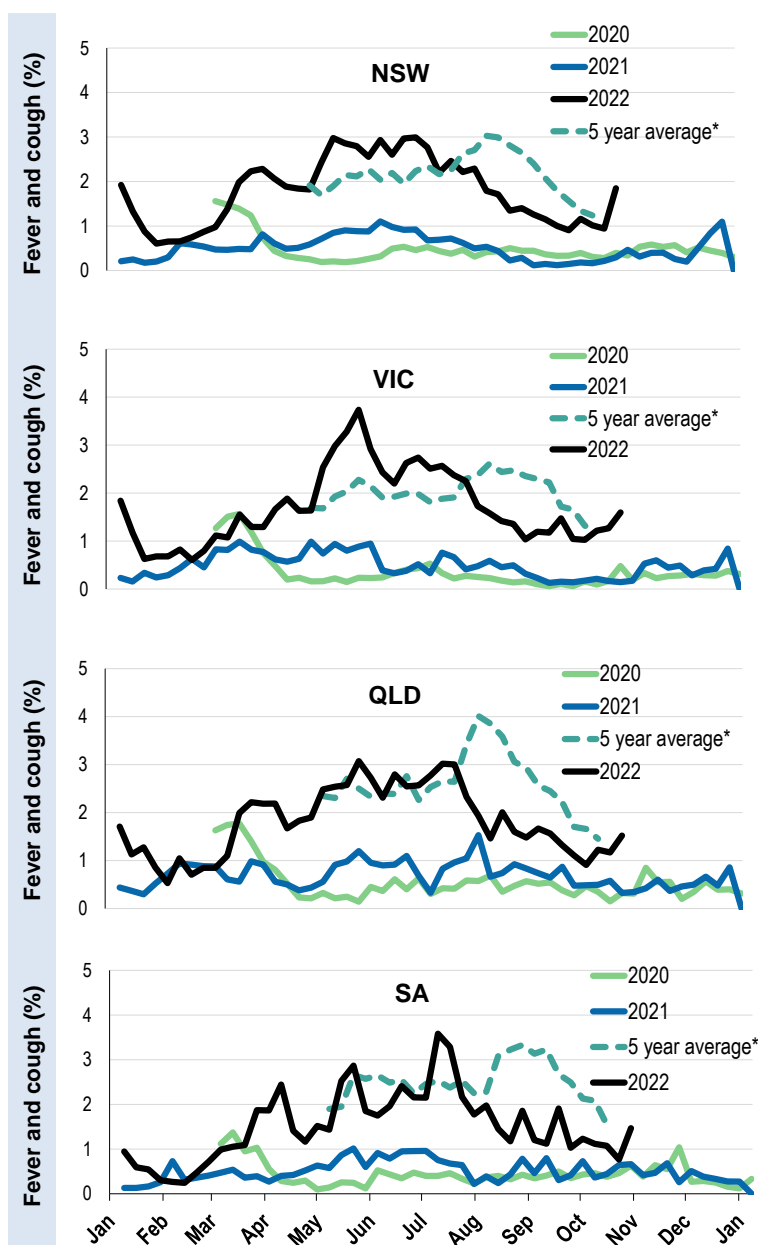
*5 year average is calculated using 2015, 2016, 2017, 2018 and 2019 data

^ Data are age standardised in this graph

Respiratory illness activity by age group in 2021 and 2022 (Australia):

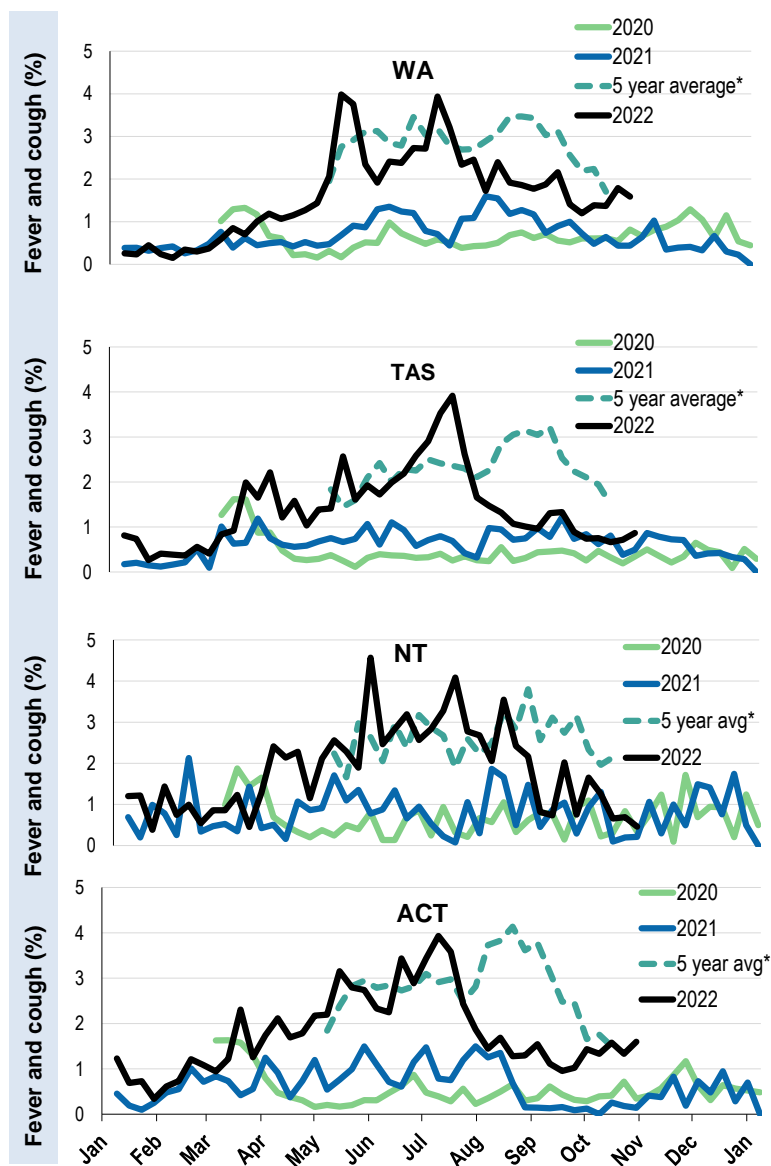


Respiratory illness activity by state/territory (age standardised):



*5 year average is calculated using 2015, 2016, 2017, 2018 and 2019 data

Respiratory illness activity by state/territory (age standardised):



*5 year average is calculated using 2015, 2016, 2017, 2018 and 2019 data

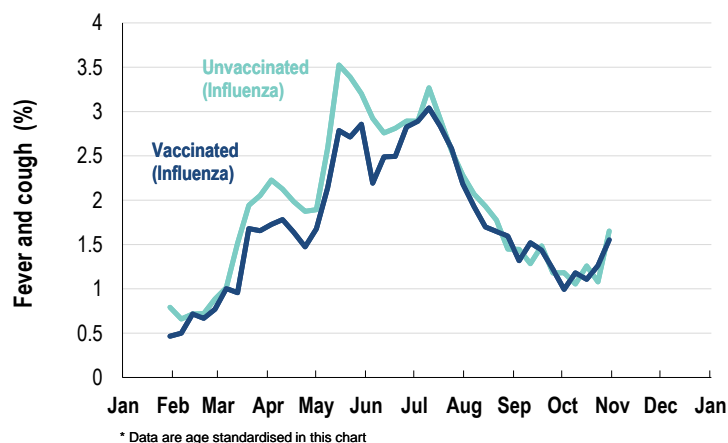
Participation:

Week participants (Week last week)

State	Participants	% Rate/100,000 population
NSW	13081	35.3% 159.8
VIC	6979	18.9% 105.1
QLD	4463	12.1% 85.2
SA	3420	9.2% 192.9
WA	3702	10.0% 137.9
TAS	2514	6.8% 464.9
NT	702	1.9% 285.5
ACT	2146	5.8% 498.5
AUS	37007	100.0% 143.7

Vaccination rates:

Vaccinated participants:	COVID-19 vaccine				Influenza (%)
	At least 1 dose (%)	At least 2 doses (%)	3 doses (%)	4 doses (%)	
<5 years					48.8
5-11 years	86.5	80.8	1.4	0.0	42.6
12-17 years	97.6	96.7	23.7	0.9	33.8
18-64 years	99.2	99.1	94.4	50.8	68.1
65+ years	99.5	99.4	98.1	90.6	83.8
Working with patients	99.6	99.6	97.7	59.1	80.4
Aboriginal and/or Torres Strait Islander	93.5	92.0	75.2	42.9	62.2
Vaccinated overall (%)	97.9	97.5	89.1	61.3	71.5

Respiratory illness activity by self-reported influenza vaccination status, 2022 (Australia):

Respiratory illness activity by self-reported COVID-19 vaccination status, 2022 (Australia):
