

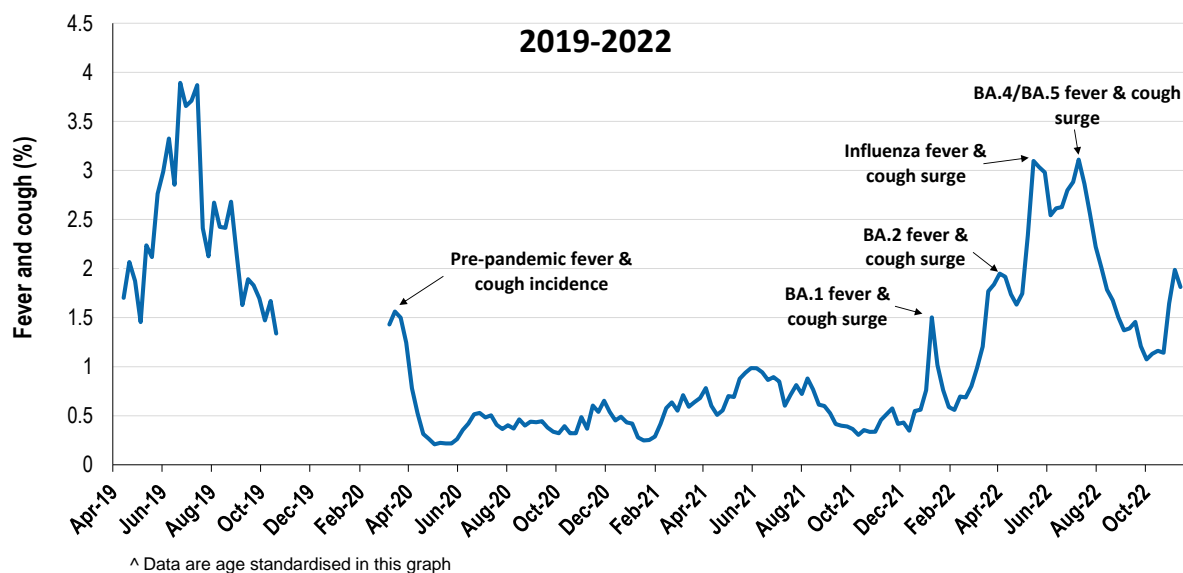
## Respiratory illness levels decreasing compared to last week and increasing in those aged 40 years and over

28,235 participants this week

### Respiratory illness activity\*:

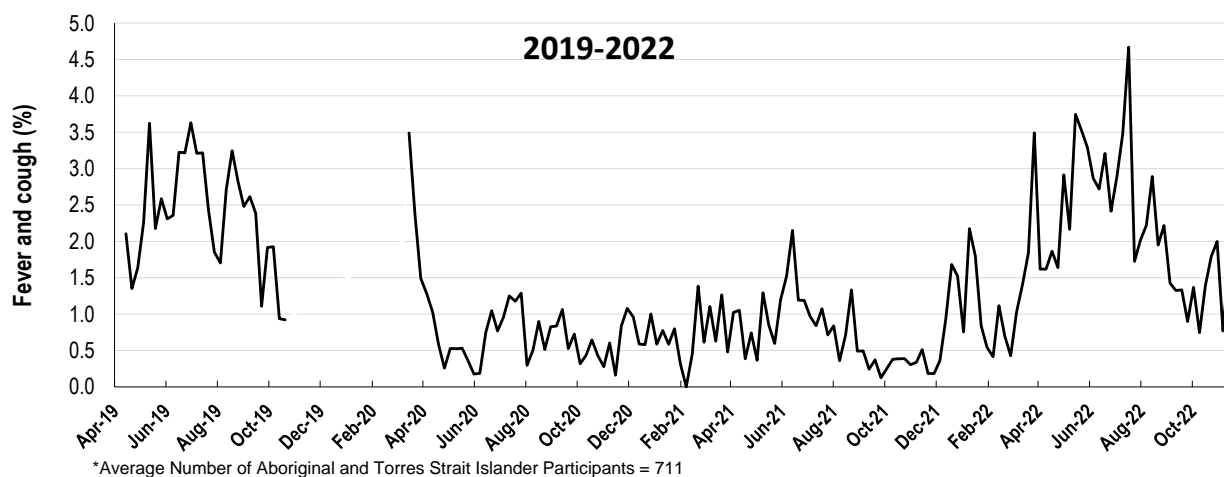
\*Respiratory illness activity is defined as fever & cough for this report

**1.8% this week: respiratory illness activity is low**



### Respiratory illness activity among Aboriginal and Torres Strait Islander participants

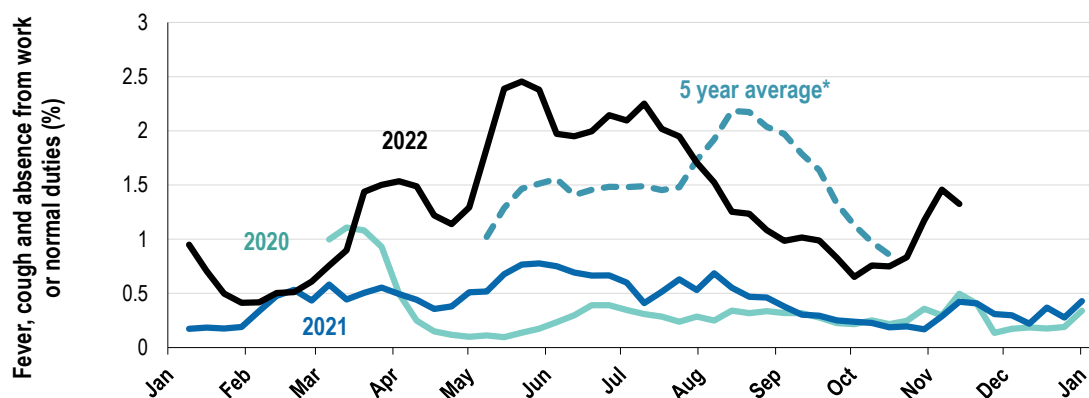
**1.7% this week: respiratory illness activity is low**



Respiratory illness severity: <i>37.3% of participants with fever and cough sought medical advice this week</i>		
Respiratory illness Severity	Week ending 13 November 2022	Week ending 06 November 2022
	number (%)	number (%)
<b>Number of participants</b>	28235 (100%)	31106 (100%)
Fever & cough	402 (1.4%)	460 (1.5%)
Fever, cough & time-off normal duties	276 (1%)	308 (1%)
Fever, cough & 3 or more days off work/normal duties	188 (0.7%)	186 (0.6%)
<b>Number of participants with fever and cough</b>	402 (100%)	460 (100%)
*Sought medical advice for fever and cough	150 (37.3%)	163 (35.4%)
Admitted to hospital	3 (0.7%)	3 (0.7%)
Tested for influenza	28 (7%)	34 (7.4%)
Tested, result positive for influenza	2 (0.5%)	4 (0.9%)
Tested for COVID-19 by PCR	84 (20.9%)	83 (18%)
Tested for COVID-19 by PCR, result positive	42 (10.4%)	38 (8.3%)
Tested for COVID-19 by RAT	329 (81.8%)	381 (82.8%)
Tested for COVID-19 by RAT, result positive	168 (41.8%)	178 (38.7%)

\*Includes those who sought medical advice from a general practitioner, COVID-19 clinic, emergency department, or were admitted to hospital for fever & cough

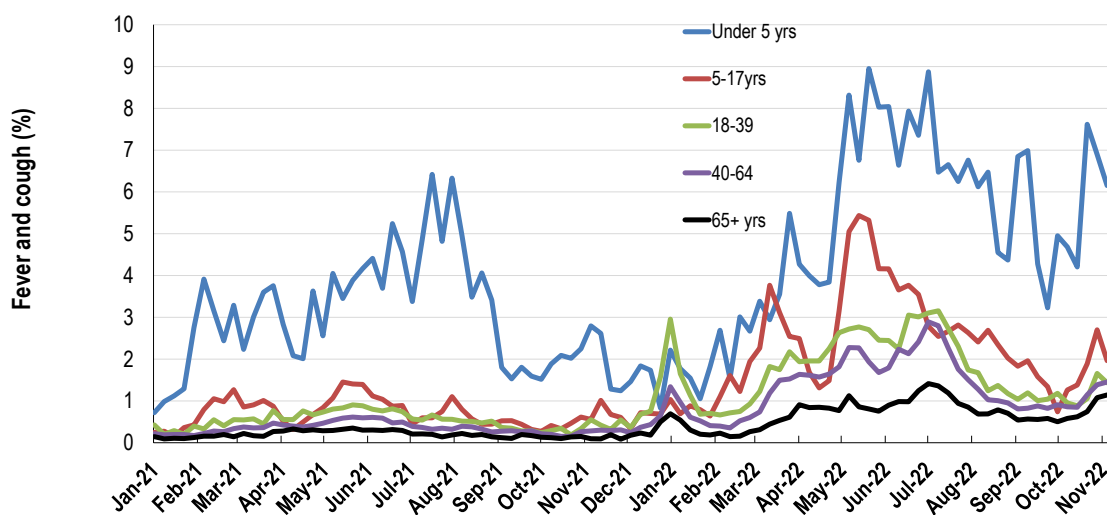
**Fever, cough and absence from work or normal duties (Australia):**



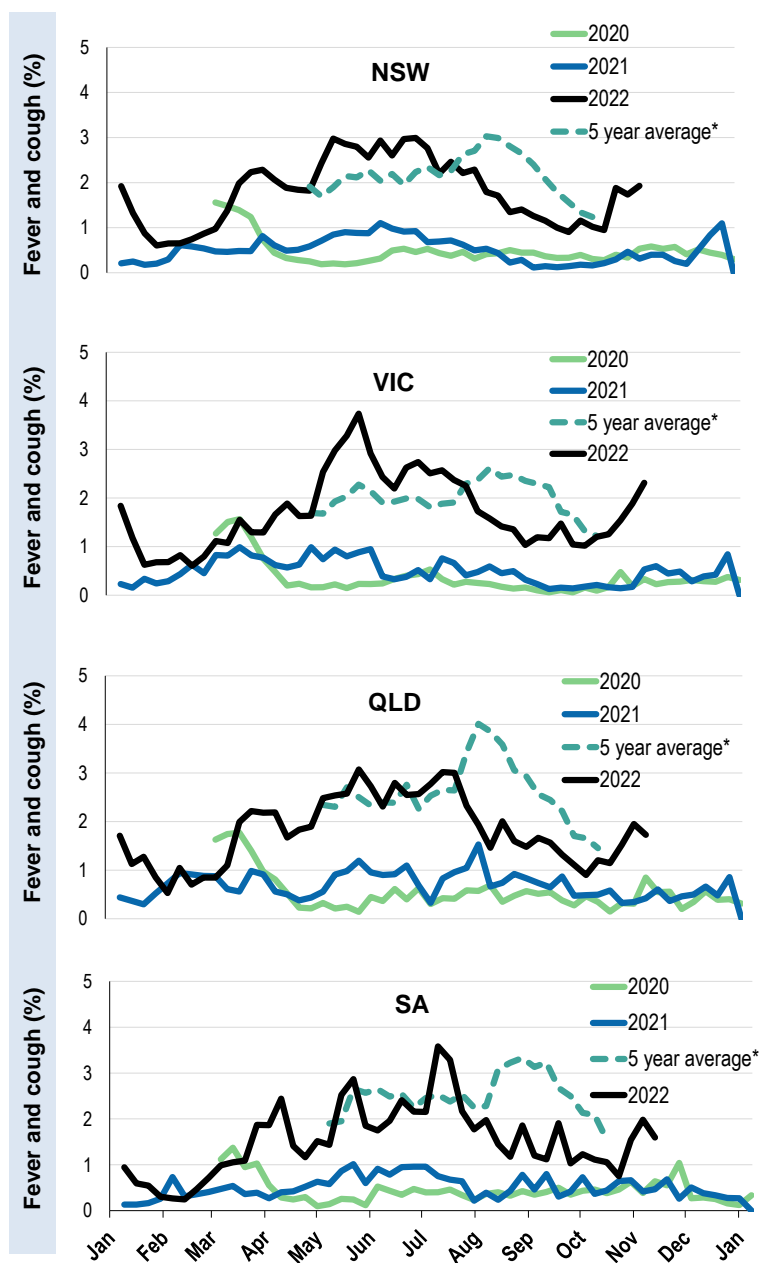
\*5 year average is calculated using 2015, 2016, 2017, 2018 and 2019 data

^ Data are age standardised in this graph

**Respiratory illness activity by age group in 2021 and 2022 (Australia):**

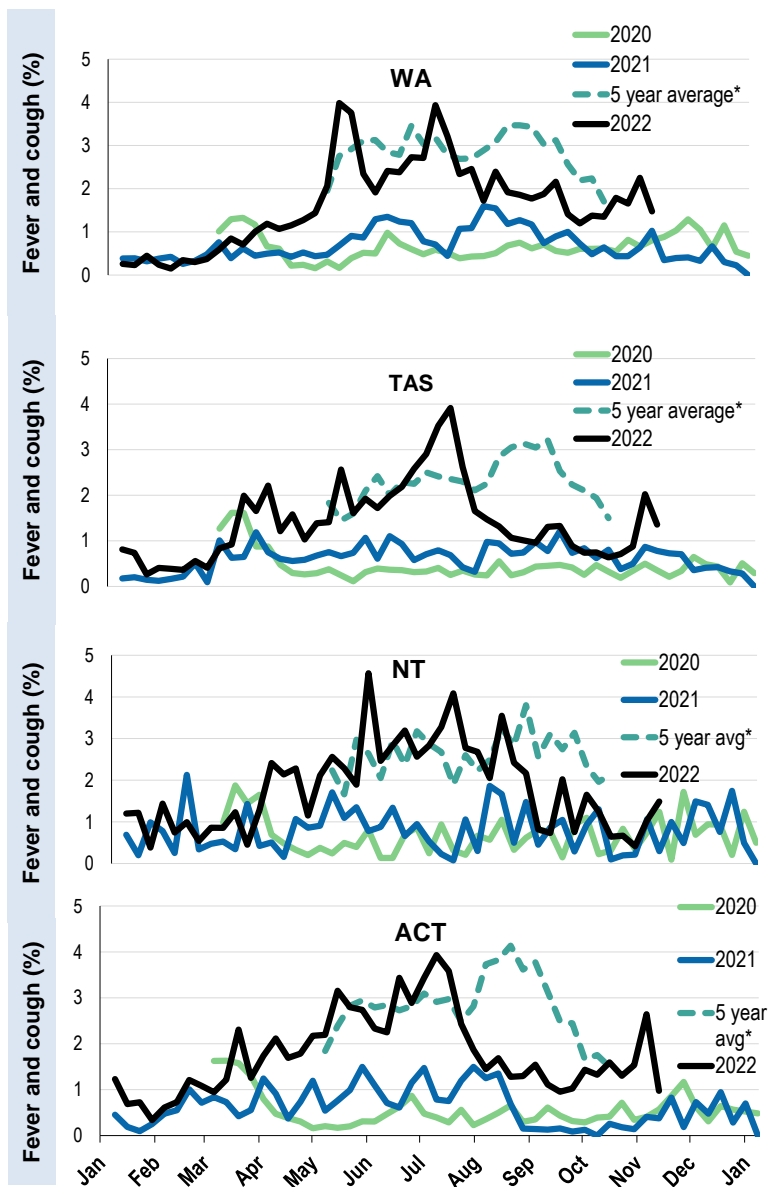


Respiratory illness activity by state/territory (age standardised):



\*5 year average is calculated using 2015, 2016, 2017, 2018 and 2019 data

Respiratory illness activity by state/territory (age standardised):



\*5 year average is calculated using 2015, 2016, 2017, 2018 and 2019 data

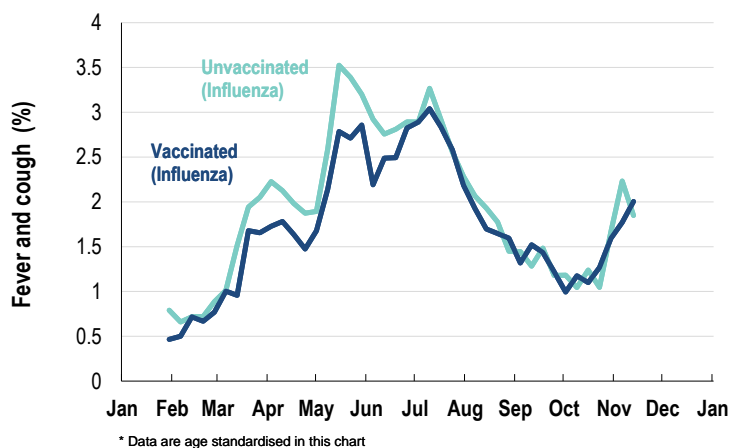
**Participation:**

Week participants (Week last week)

State	Participants	% Rate/100,000 population
NSW	10107	35.8% <b>123.5</b>
VIC	5320	18.8% <b>80.1</b>
QLD	3308	11.7% <b>63.1</b>
SA	2635	9.3% <b>148.6</b>
WA	2804	9.9% <b>104.4</b>
TAS	1927	6.8% <b>356.3</b>
NT	613	2.2% <b>249.3</b>
ACT	1521	5.4% <b>353.3</b>
AUS	28235	100.0% <b>109.6</b>

**Vaccination rates:**

Vaccinated participants:	COVID-19 vaccine				Influenza (%)
	At least 1 dose (%)	At least 2 doses (%)	3 doses (%)	4 doses (%)	
<5 years	0.4	0.4			43.5
5-11 years	85.9	81.0	1.9	0.0	41.6
12-17 years	97.3	96.0	21.7	0.7	33.4
18-64 years	99.2	99.1	94.1	52.2	68.3
65+ years	99.4	99.3	97.9	90.6	85.0
Working with patients	99.5	99.4	97.5	61.3	80.7
Aboriginal and/or Torres Strait Islander	95.1	93.0	76.2	40.7	62.5
<b>Vaccinated overall (%)</b>	<b>97.9</b>	<b>97.5</b>	<b>88.7</b>	<b>61.2</b>	<b>71.6</b>

**Respiratory illness activity by self-reported influenza vaccination status, 2022 (Australia):**

**Respiratory illness activity by self-reported COVID-19 vaccination status, 2022 (Australia):**
